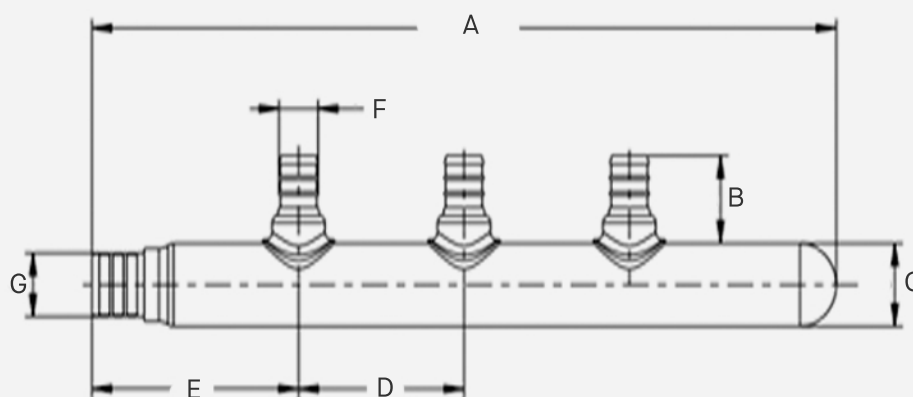


Copper Crimp Valveless Manifold

PEX Crimp x Spin Closed w/ 1/2" PEX Crimp Outlets

FEATURES

- **Rated for Durability** - Able to withstand a maximum operating temperature of 180°F at 125 PSI
- **Safe for Drinking Water** - Meets ASTM F877 and F-1807 standards for use in hot- and cold drinking water distribution systems
- **Lead Free** - Listed by NSF Standards 14, 61, and 372
- **Fully Compliant** - Complies with B137.5 CSA Standard for safe and effective use in commercial and residential jobs



SKU	Branch	A	B	C	D/Revise	E	F	G
CM4-100PXZ-PX0	4	10.5"	0.925"	CLOSE	2"/3	2.5"	1/2" PEX	1" PEX
CM6-100PXZ-PX0	6	14.5"	0.925"	CLOSE	2"/5	2.5"	1/2" PEX	1" PEX
CM8-100PXZ-PX0	8	18.5"	0.925"	CLOSE	2"/7	2.5"	1/2" PEX	1" PEX
CM12-100PXZ-PX0	12	26.5"	0.925"	CLOSE	2"/11	2.5"	1/2" PEX	1" PEX