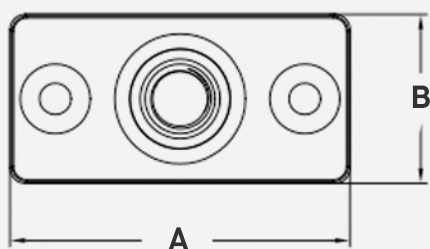
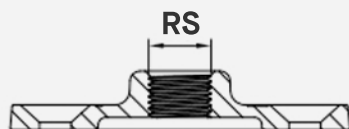


# Black Ceiling Plate

## FEATURES

- **Malleable Iron Construction** – makes the plate strong yet easy to work with.
- **Plain Finish** – won't deteriorate over time.
- **Applications** - attaching hanger rod to wood beams, ceilings, walls and floors.



SKU	Size	A	B	Rod Size (RS)	Max Rec. Load (lbs)
BLPL038	3/8"	2.68"	1.34"	3/8"	180
BLPL050	1/2"	2.68"	1.34"	1/2"	180