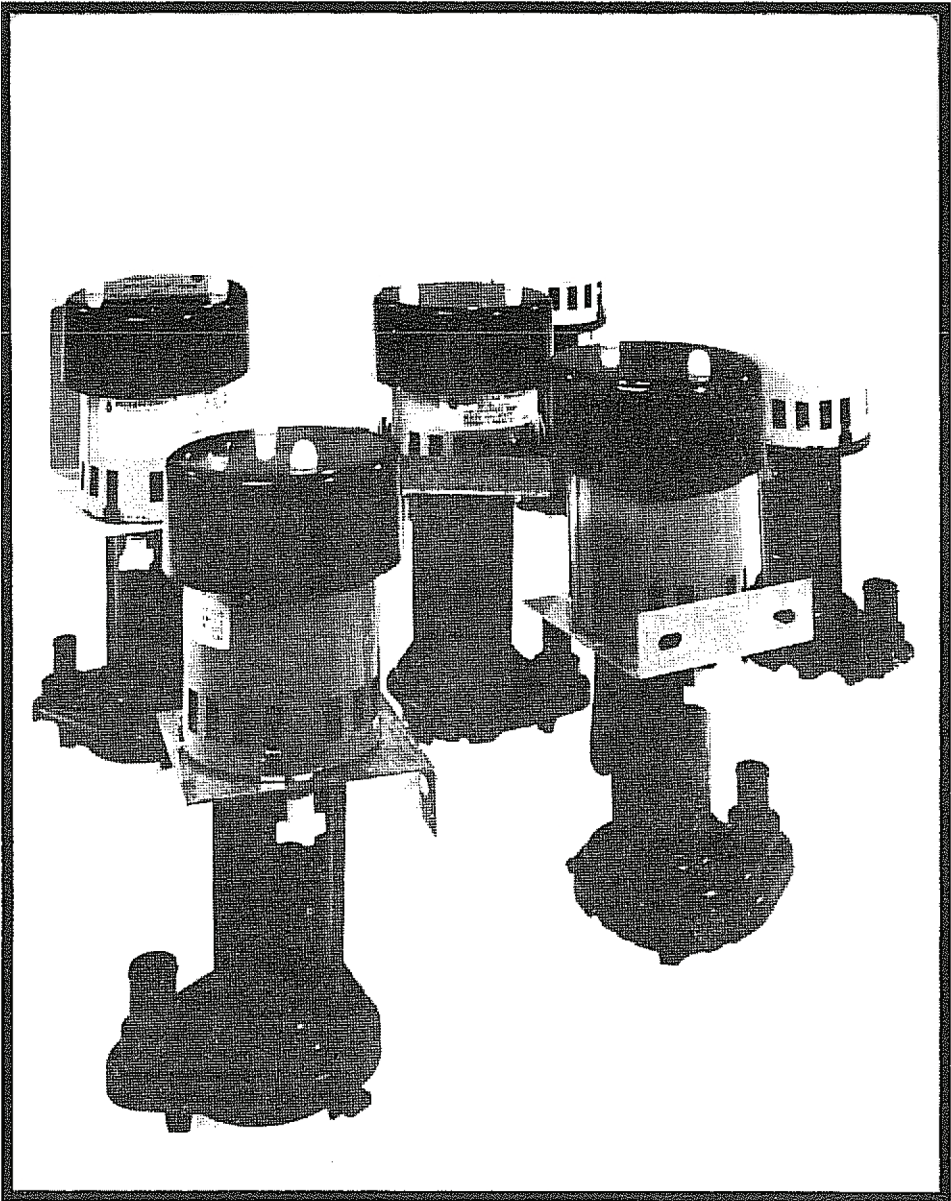


BECKETT ICE MACHINE REPLACEMENT PUMP



This model is for the replacement of the recirculating pump in cube type ice machines. The pump you have selected should be of the same size and configuration for proper ice production. This replacement pump must be protected from water splash. Warranty will be void if there is any evidence of water damage.

Read instructions carefully before attempting to install, operate, or service Beckett ice machine replacement pumps. Failure to comply with instructions could result in personal injury and/or property damage. Retain instructions for future reference.

MODEL	POWER SUPPLY REQ'D.				DIMENSIONS				G.P.M		
					INLET	REF. OUTLET	H	DIA.	2'	4'	MAX HEAD IN FEET
IMR622F	230V 60Hz	3000	.7	80	1"	5/8"	91/2"	41/8"	5	4	9
BRPC121	115V 60Hz	3000	1.5	100	1"	5/8" dbl	91/8"	41/8"	10	8	12
BRPC122	230V 60Hz	3000	.8	100	1"	5/8" dbl	91/4"	41/8"	10	8	12
BRPM51C	115V 60Hz	1500	.6	50	1"	3/4"	81/8"	41/8"	2.4	—	3.5
BRPM81C	115V 60Hz	3000	1.5	100	1"	3/4"	9"	41/8"	10	9	12
BRPM82C	230V 60Hz	3000	.8	100	1"	3/4"	91/4"	41/8"	10	9	12
BRPM102	230V 60Hz	3000	.8	130	1"	1"	93/4"	41/8"	13	11	11
BRPM151	115V 60Hz	3000	1.4	100	1"	1"	91/8"	41/8"	9	8	10
BRPM152	230V 60Hz	3000	.7	100	1"	1"	91/4"	41/8"	9	8	10
BRPM152B	230V 60Hz	3000	.7	100	1"	1"	91/4"	41/8"	9	8	10
BRPMA21	115V 60Hz	3000	.8	57	1"	1/2"	9"	41/8"	3	2	7
BRPMA51	115V 60Hz	3000	1.4	100	1"	1/2"	91/2"	41/8"	3	2	9
BRPMA52	230V 60Hz	3000	.7	100	1"	1/2"	91/2"	41/8"	3	2	10
BRPMA81	115V 60Hz	3000	1.6	120	1"	1"	91/2"	41/8"	11	9	11
BRPMA82	230V 60Hz	3000	.8	120	1"	1"	91/2"	41/8"	11	9	11
BRPMH11	115V 60Hz	1500	.4	25	1"	5/8"	81/2"	41/8"	3	—	3.5
BRPMH11A	115V 60Hz	1500	.4	25	1"	1/2"	81/2"	41/8"	2	—	3.5
BRPMH11B	115V 60Hz	1500	.4	25	1"	5/8"	83/4"	41/8"	3	—	3.5
BRPMH31	115V 60Hz	3000	.8	50	1"	5/8"	9"	41/8"	6	5	10
BRPMH31B	115V 60Hz	3000	.8	50	1"	5/8"	9"	41/8"	6	5	10
BRPR41	115V 60Hz	3000	1.5	100	1"	5/8"	91/2"	41/8"	7	6.2	11
BRPR42	230V 60Hz	3000	.8	100	1"	5/8"	91/2"	41/8"	7	6.2	11
BRPS51	115V 60Hz	3000	.6	50	1"	1/2"	83/4"	41/8"	3	2	6
BRPS52	230V 60Hz	3000	.6	50	1"	1/2"	83/4"	41/8"	3	2	6
BRPS81	115V 60Hz	3000	.7	60	1"	3/4"	83/4"	41/8"	6	4	6
BRPS82	230V 60Hz	3000	.7	60	1"	3/4"	83/4"	41/8"	6	4	6
BRPS111	115V 60Hz	3000	1.5	100	1"	3/4"	91/2"	41/8"	9	8	12
BRPS141	115V 60Hz	3000	1.5	100	1"	1"	91/2"	41/8"	11	9	12
BRPY81	115V 60Hz	3000	1.5	100	1"	5/8"	91/2"	41/8"	7	6.2	11
BRPY121	115V 60Hz	3000	1.5	100	1"	1"	91/2"	41/8"	12	10	11
BRPY122	230V 60Hz	3000	.8	100	1"	1"	91/2"	41/8"	12	10	11

LIMITED WARRANTY

All Beckett pumps are warranted to the user against defective material and workmanship under normal use, for a period of 12 months from the date of purchase by the original purchaser. All other Beckett products are warranted to the user against defective material and workmanship for 3 months from the date of purchase, with the exception of liner material (which is 20 years for 35 mil PVC, 15 years for 20 mil PVC, 20 years for 40 mil EPDM and 15 years for pre-formed poly ponds from the date of purchase by the original owner) and filter material (warranted only against manufacturing defects for unused filter material for 12 months from the date of purchase by the original purchaser). Replacement liability in all events is limited to the replacing or repairing at Beckett's sole discretion of any part or parts which are defective in material or workmanship. Proof of purchase is required on all claims in the form of invoice copy, sales ticket, etc.

APPLICATION: Warranty covers only properly installed and maintained units. Warranty is limited to application at normal temperature (32°F to 98°F) pumping fluids with a specific gravity up to 1.1 and with a pH range of 5 to 9 (fresh water). Other liquid applications and extreme temperature uses must be approved in advance in writing by Beckett Corporation.

ADMINISTRATION: Warranty claims must be made by returning the defective Beckett part, freight prepaid, along with proof of purchase, to: Beckett Corporation, Customer Service Dept., 5391 Campus Circle Dr., Irving, Texas 75063. All items returned will be inspected to determine cause of failure before warranty is approved.

INSTALLATION and/or REMOVAL CHARGES: Warranty does not cover any costs associated with the installation or removal of products subject to warranty claims.

DISPOSITION: Beckett Corporation will make a good-faith effort for prompt disposition regarding any item in warranty, which proves to be defective. If products were damaged in transit, please file a claim with the carrier.

DISCLAIMER: Any oral statements about the product made by the seller, the manufacturer, the representatives or any other parties, do not constitute warranties, should not be relied upon by the user, and are not part of the contract for sale. Seller's and manufacturer's only obligation, and buyer's and user's only remedy, shall be for the manufacturer to either replace and/or repair at the manufacturer's sole discretion the Beckett product as described above. Neither seller nor the manufacturer shall be liable for any injury, loss or damage, direct, incidental or consequential (including, but not limited to, incidental or consequential damages for lost profits, lost sales, injury to person or property, or any other incidental or consequential loss), arising from any cause whatsoever, no matter whether based upon warranty, contract, negligence or other misuse, and the buyer and user agree that no other remedy shall be available to them. Before using, the buyer and user shall determine the suitability of the product for the intended use, and assumes all risk and liability whatsoever in connection therewith. The warranty and remedy described in this limited warranty is an EXCLUSIVE warranty and remedy and IN LIEU of any other warranty or remedy, expressed or implied, which other warranties and remedies are hereby expressly EXCLUDED, including but not limited to any implied warranty of MERCHANTABILITY OR FITNESS FOR A PARTICULAR PURPOSE. This warranty gives buyer and user specific legal rights, and buyer and user may also have other rights which vary from state to state. Some states do not allow the exclusion or limitation of incidental or consequential damages, so the above limitation or exclusion may not apply to you.

FOR YOUR RECORDS:

Date of Purchase _____

Model Number _____

Name of Dealer _____

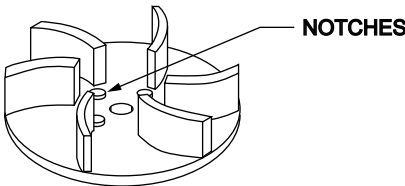
PLEASE KEEP RECEIPT IN CASE OF WARRANTY SERVICE.

General Safety Information

1. Know the pump application, limitations, and potential hazards.
2. Make certain that the power source conforms to the requirements of your equipment (electric motor).
3. Disconnect power before servicing. If the power disconnect is out of sight, lock in the open position and tag it to prevent unexpected application of power. Failure to do so could result in fatal electrical shock.
4. Periodically inspect pump and system components. Perform routine maintenance as required.

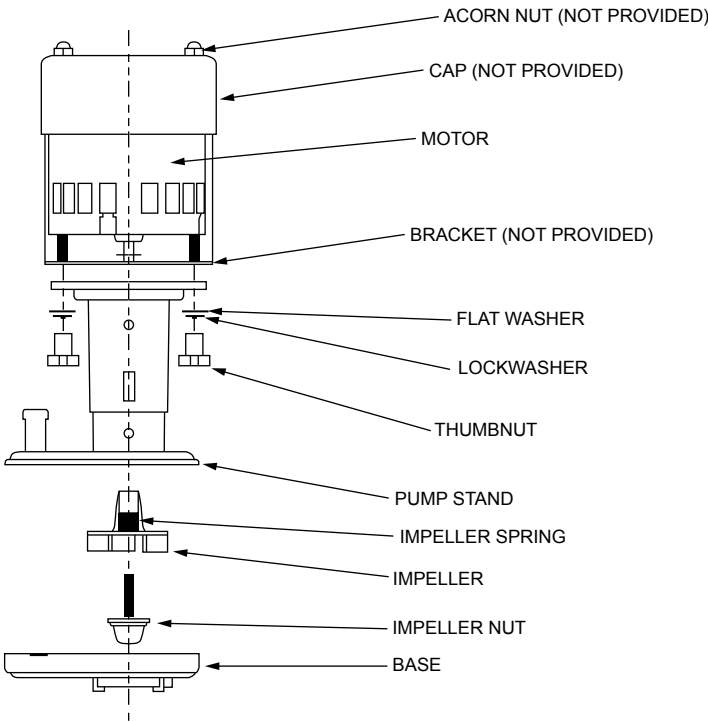
Assembly Procedure

1. Place motor on bench with shaft up.
2. As required, place bracket on motor studs followed by pump stand.
3. Make sure the motor shaft is centered in pump stand. Place flat washer and lock washer on the motor studs and secure each with the thumb nut.
4. Place impeller on motor shaft, press and hold firmly against stand.
5. Insert impeller nut and screw into motor shaft until nut touches impeller, then back impeller nut off two notches.



Disassembly Procedure

1. REQUIRED ONLY when using existing mounting bracket and/or replacing the impeller, motor, etc.
 2. Remove base plate by pressing tabs with thumbs or tapping with plastic mallet.
 3. Press impeller against pump stand and remove impeller nut and screw.
 4. Remove impeller.
 5. Remove thumb nuts and washers.
 6. Remove pump stand.
6. Release pressure on impeller. This should allow impeller to spring up and spin freely without touching the base plate.(reference clearance .05")
 7. Fit base plate in pump housing groove. While holding down one side of the base plate press the opposite side into the groove until flush with the pump stand.
 8. Before installation, test run the pump to insure proper assembly.



MODEL	MOTOR P/N	PUMP STAND P/N & SIZE	CAP	IMPELLER	BRACKET
IMR622F	Z5231	X1556 5/8"	X1434	X1428	N/A
BRPC121	Z5217	X1605	X1434	X1602	X3043
BRPC122	Z5231	X1605	X1434	X1602	X3043
BRPM51C	Z5220	X1558 3/4"	N/A	X1603	CUP X1318
BRPM81C	Z5217	X1558 3/4"	N/A	X1602	CUP X1317
BRPM82C	Z5231	X1558 3/4"	N/A	X1602	CUP X1317
BRPM102	Z5230	X1559 1"	N/A	X1603	N/A
BRPM151	Z5217	X1559 1"	N/A	X1601	N/A
BRPM152	Z5231	X1559 1"	N/A	X1601	N/A
BRPM152B	Z5231	X1559 1"	N/A	X1601	X3137
BRPMA21	Z5236	X1533 1/2"	X1434	X1600	X3014
BRPMA51	Z5219	X1533 1/2"	X1434	X1601	X3014
BRPMA52	Z5226	X1533 1/2"	X1434	X1601	X3014
BRPMA81	Z5219	X1559 1"	X1434	X1602	X3014
BRPMA82	Z5226	X1426 1"	X1434	X1602	X3014
BRPMH11	Z5212	X1556 5/8"	X1434	X1602	X3149
BRPMH11A	Z5212	X1533 1/2"	X1434	X1602	X3149
BRPMH11B	Z5234	X1556 5/8"	X1434	X1602	N/A
BRPMH31	Z5218	X1556 3/8"	X1434	X1602	N/A
BRPMH31B	Z5236	X1556 5/8"	X1434	X1602	N/A
BRPR41	Z5217	X1556 5/8"	X1434	X1601	X3043
BRPR42	Z5231	X1556 5/8"	X1434	X1601	X3043
BRPS51	Z5228	X1533 1/2"	N/A	X1600	N/A
BRPS52	Z5229	X1533 1/2"	N/A	X1600	N/A
BRPS81	Z5228	X1558 3/4"	N/A	X1600	N/A
BRPS82	Z5229	X1558 3/4"	N/A	X1600	N/A
BRPS111	Z5217	X1558 3/4"	X1434	X1603	Z4030
BRPS141	Z5217	X1559 1"	X1434	X1603	Z4030
BRPY81	Z5217	X1556 5/8"	X1434	X1601	X3043
BRPY121	Z5217	X1559 1"	X1434	X1601	X3043
BRPY122	Z5231	X1559 1"	X1434	X1601	X3043

SPECIFICATIONS

- Pump Construction: Impeller, stand, and base NSF listed ABS.
- Motor Protection: Thermally protected on all models.
- Maximum Liquid Temperature: 120°F.
- Approvals: NSF listed on all models.