

**BALDOR® • RELIANCE** 

**Product Information Packet**

**VEL11301**

**.33HP,1740RPM,1PH,60HZ,56C,3418LC,OPEN,F**

Part Detail							
Revision:	D	Status:	PRD/A	Change #:		Proprietary:	No
Type:	AC	Elec. Spec:	34WGW954	CD Diagram:	CD0055	Mfg Plant:	
Mech. Spec:	34F534	Layout:	34LYF534	Poles:	04	Created Date:	10-08-2014
Base:	N	Eff. Date:	08-27-2018	Leads:	6#18		

Specs			
Catalog Number:	VEL11301	Insulation Class:	B
Enclosure:	OPEN	Inverter Code:	Not Inverter
Frame:	56C	KVA Code:	K
Frame Material:	Steel	Lifting Lugs:	No Lifting Lugs
Output @ Frequency:	.330 HP @ 60 HZ	Locked Bearing Indicator:	Locked Bearing
Synchronous Speed @ Frequency:	1800 RPM @ 60 HZ	Motor Lead Quantity/Wire Size:	6 @ 18 AWG
Voltage @ Frequency:	230.0 V @ 60 HZ	Motor Lead Exit:	Ko Box
	115.0 V @ 60 HZ	Motor Lead Termination:	Flying Leads
XP Class and Group:	None	Motor Type:	3418LC
XP Division:	Not Applicable	Mounting Arrangement:	F1
Agency Approvals:	CSA	Power Factor:	85
	UR	Product Family:	General Purpose
Auxillary Box:	No Auxillary Box	Pulley End Bearing Type:	Ball
Auxillary Box Lead Termination:	None	Pulley Face Code:	C-Face
Base Indicator:	No Mounting	Pulley Shaft Indicator:	Standard
Bearing Grease Type:	Polyrex EM (-20F +300F)	Rodent Screen:	None
Blower:	None	RoHS Status:	ROHS COMPLIANT
Current @ Voltage:	1.700 A @ 230.0 V	Shaft Extension Location:	Pulley End

	2.500 A @ 208.0 V	<b>Shaft Ground Indicator:</b>	No Shaft Grounding
	3.400 A @ 115.0 V	<b>Shaft Rotation:</b>	Reversible
<b>Design Code:</b>	N	<b>Shaft Slinger Indicator:</b>	No Slinger
<b>Drip Cover:</b>	Drip Cover	<b>Speed Code:</b>	Single Speed
<b>Duty Rating:</b>	CONT	<b>Motor Standards:</b>	NEMA
<b>Electrically Isolated Bearing:</b>	Not Electrically Isolated	<b>Starting Method:</b>	Direct on line
<b>Feedback Device:</b>	NO FEEDBACK	<b>Thermal Device - Bearing:</b>	None
<b>Front Face Code:</b>	Drip Cover Mounting	<b>Thermal Device - Winding:</b>	None
<b>Front Shaft Indicator:</b>	None	<b>Vibration Sensor Indicator:</b>	No Vibration Sensor
<b>Heater Indicator:</b>	No Heater	<b>Winding Thermal 1:</b>	None
		<b>Winding Thermal 2:</b>	None

Nameplate NP3155L												
CAT.NO.	VEL11301											
SPEC.	34F534W954G1											
HP	.33											
VOLTS	115/230											
AMP	3.4/1.7											
RPM	1740											
FRAME	56C					HZ	60			PH	1	
SER.F.	1.35					CODE	K		DES	N	CL	B
F.L. AVG. EFF.	72.4					PF	85					
RATING	40C AMB-CONT											
CC									USABLE AT 208V	2.5		
DE	6203					ODE	6203					
ENCL	OPEN					SN						
	SFA 4.4/2.2											

Parts List		
Part Number	Description	Quantity
SA288191	SA 34F534W954G1	1.000 EA
RA274389	RA 34F534W954G1	1.000 EA
OC3016F12SP	CYL OIL CAP 16MFD/370V	1.000 EA
EC1145A02	ELEC CAP 115V 1.4 X 3.3 X	1.000 EA
NS2512A01	INSULATOR, CONDUIT BOX X	1.000 EA
34CB3002A	CB CAST W/.88 DIA HOLE	1.000 EA
51XB1016A07	10-16 X 7/16 HXWSSLD SERTYB	2.000 EA
11XW1032G06	10-32 X .38, TAPTITE II, HEX WSHR SLTD U	1.000 EA
34EP3210A03SP	FR ENDPLATE, MACH	1.000 EA
SP1006A01	TERM. BOARD, MODE 35 SW X H-23655	1.000 EA
51XW0832A07	8-32 X .44, TAPTITE II, HEX WSHR SLTD SE	2.000 EA
34CB3801	CAPACITOR BOX, DIE CAST	1.000 EA
34GS5003A01	FOAM SLEEVE, ID = 2 1/16" X 4 3/8"	1.000 EA
NS2501A02	INSULATOR, CAPACITOR BOX	1.000 EA
51XB1214A08	12-14 X 1/2HX WS SL SR TYBX	2.000 EA
HW5100A03	WAVY WASHER (W1543-017)	1.000 EA
34EP3401A01SP	PU ENDPLATE, MACH	1.000 EA
34AD2000	BAFFLE PLATE, STAMPED	1.000 EA
60XW0632A06	6-32 X 3/8 TORX HEAD SCREW TAPTITE II	4.000 EA
51XN1032A20	10-32 X 1 1/4 HX WS SL SR	2.000 EA
34FH4000A11	DRIP COVER, STAMPED,PRIMER	1.000 EA
51XW1032A06	10-32 X .38, TAPTITE II, HEX WSHR SLTD S	3.000 EA
34CB4517	CB LID 4 MTG HOLES .22 DIA STAMPED, FOR	1.000 EA
51XW0832A07	8-32 X .44, TAPTITE II, HEX WSHR SLTD SE	4.000 EA

<b>Parts List (continued)</b>		
<b>Part Number</b>	<b>Description</b>	<b>Quantity</b>
HW2501D13	KEY, 3/16 SQ X 1.375	1.000 EA
HA7000A04	KEY RETAINER 0.625 DIA SHAFTS	1.000 EA
MG1000Y03	MUNSELL 2.53Y 6.70/ 4.60, GLOSS 20,	0.014 GA
85XU0407S04	4X1/4 U DRIVE PIN STAINLESS	2.000 EA
SP5051B17	MDL 34 TORQ STAT SW,TYPE LC, STD F1 & F2	1.000 EA
HA3100A28	THRUBOLT 10-32 X 8.187	4.000 EA
MN416A01	TAG-INSTAL-MAINT no wire (1200/bx) 3/19	1.000 EA
LC0001A01	CONN LABEL / WARNING LABEL (LC0001 / LB1	1.000 EA
NP3155L	ALUM SUPER-E UL CSA CC "SEMS"	1.000 EA
35PA1000	PKG GRP, PRINT PK1008A06	1.000 EA
PK3083	STYROFOAM PACKING CRADLE	1.000 EA
PK3088	MICROFOAM, 8"X"8 PERF. SHEETS 5,400/RL	1.000 EA

**AC Induction Motor Performance Data**

Record # 49395 - Typical performance - not guaranteed values

<b>Winding:</b> 34WGW954-R004	<b>Type:</b> 3418LC	<b>Enclosure:</b> OPEN
-------------------------------	---------------------	------------------------

Nameplate Data				115 V, 60 Hz: Low Voltage Connection	
Rated Output (HP)	.33			Full Load Torque	0.99 LB-FT
Volts	115/230			Start Configuration	direct on line
Full Load Amps	3.4/1.7			Breakdown Torque	2.46 LB-FT
R.P.M.	1740			Pull-up Torque	2.33 LB-FT
Hz	60	Phase	1	Locked-rotor Torque	3.94 LB-FT
NEMA Design Code	N	KVA Code	K	Starting Current	24.5 A
Service Factor (S.F.)	1.35			No-load Current	1.57 A
NEMA Nom. Eff.	72.4	Power Factor	85	Line-line Res. @ 25°C	1.8255 Ω A Ph 5.5445 Ω B Ph
Rating - Duty	40C AMB-CONT			Temp. Rise @ Rated Load	29°C
S.F. Amps	4.4/2.2			Temp. Rise @ S.F. Load	42°C

Load Characteristics 115 V, 60 Hz, 0.33 HP

% of Rated Load	25	50	75	100	125	150	S.F.
Power Factor	65	74	81	86	88	90	89
Efficiency	42.7	67.4	74.2	74.6	74.2	72.5	73.5
Speed	1781.1	1772.5	1759.4	1742.5	1721.5	1700.5	1713
Line amperes	1.86	2.15	2.64	3.31	4.09	4.89	4.41

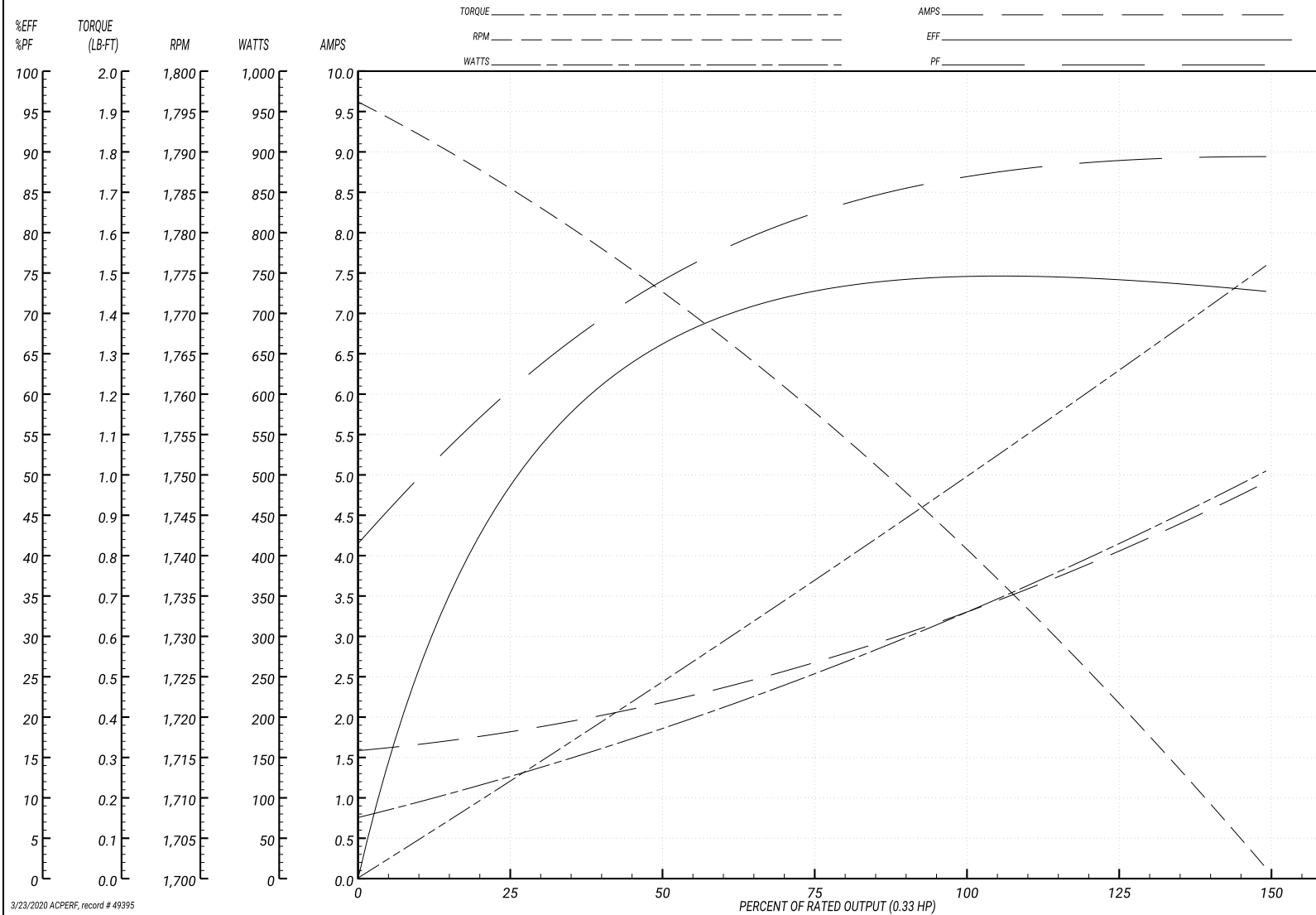
Performance Graph at 115V, 60Hz, 0.33HP Typical performance - Not guaranteed values

ABB Motors and Mechanical Inc.

WINDING # 34WGW954

Typical performance - not guaranteed values.

0.33 HP 1 PH 60 HZ 1740 RPM 115 V 3418LC  
 TORQUES(LB-FT): PO=2.46 PU=2.33 LR=3.94 LRA=24.5



3/23/2020 ACPERF, record # 49395

**AC Induction Motor Performance Data**

Record # 49397 - Typical performance - not guaranteed values

<b>Winding:</b> 34WGW954-R004	<b>Type:</b> 3418LC	<b>Enclosure:</b> OPEN
-------------------------------	---------------------	------------------------

Nameplate Data				230 V, 60 Hz: High Voltage Connection	
Rated Output (HP)	.33			Full Load Torque	0.99 LB-FT
Volts	115/230			Start Configuration	direct on line
Full Load Amps	3.4/1.7			Breakdown Torque	2.46 LB-FT
R.P.M.	1740			Pull-up Torque	2.08 LB-FT
Hz	60	Phase	1	Locked-rotor Torque	3.51 LB-FT
NEMA Design Code	N	KVA Code	K	Starting Current	12.36 A
Service Factor (S.F.)	1.35			No-load Current	0.794 A
NEMA Nom. Eff.	72.4	Power Factor	85	Line-line Res. @ 25°C	1.75 Ω A Ph 5.76 Ω B Ph
Rating - Duty	40C AMB-CONT			Temp. Rise @ Rated Load	30°C
S.F. Amps	4.4/2.2			Temp. Rise @ S.F. Load	40°C
				Rotor inertia	0.0428 LB-FT <sup>2</sup>

Load Characteristics 230 V, 60 Hz, 0.33 HP

% of Rated Load	25	50	75	100	125	150	S.F.
Power Factor	66	74	82	86	88	90	89
Efficiency	41.8	66.8	73.5	74.3	73.8	72.1	73.1
Speed	1781	1773	1759	1743	1722	1700	1713
Line amperes	0.941	1.09	1.33	1.67	2.06	2.46	2.22

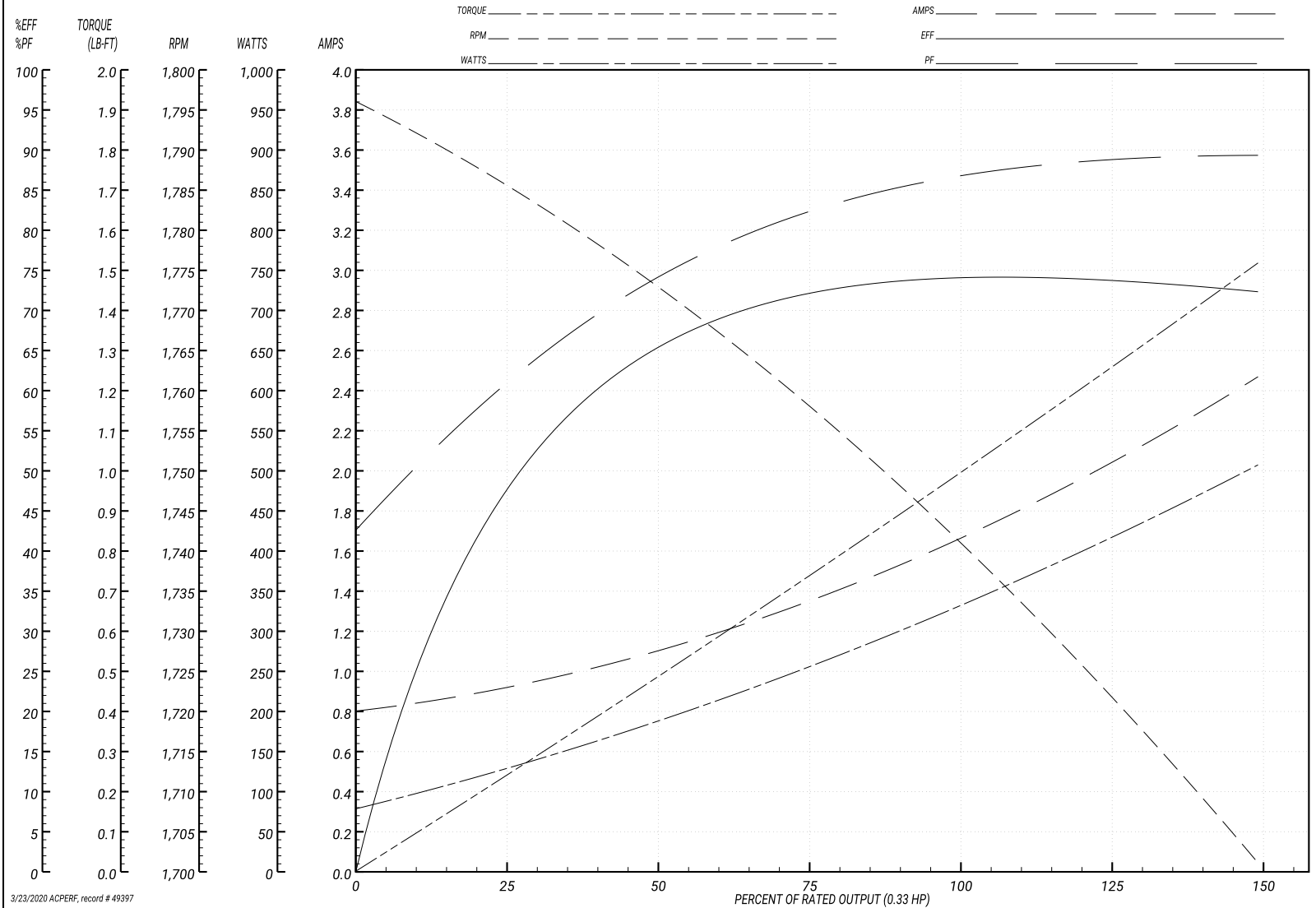
Performance Graph at 230V, 60Hz, 0.33HP Typical performance - Not guaranteed values

ABB Motors and Mechanical Inc.

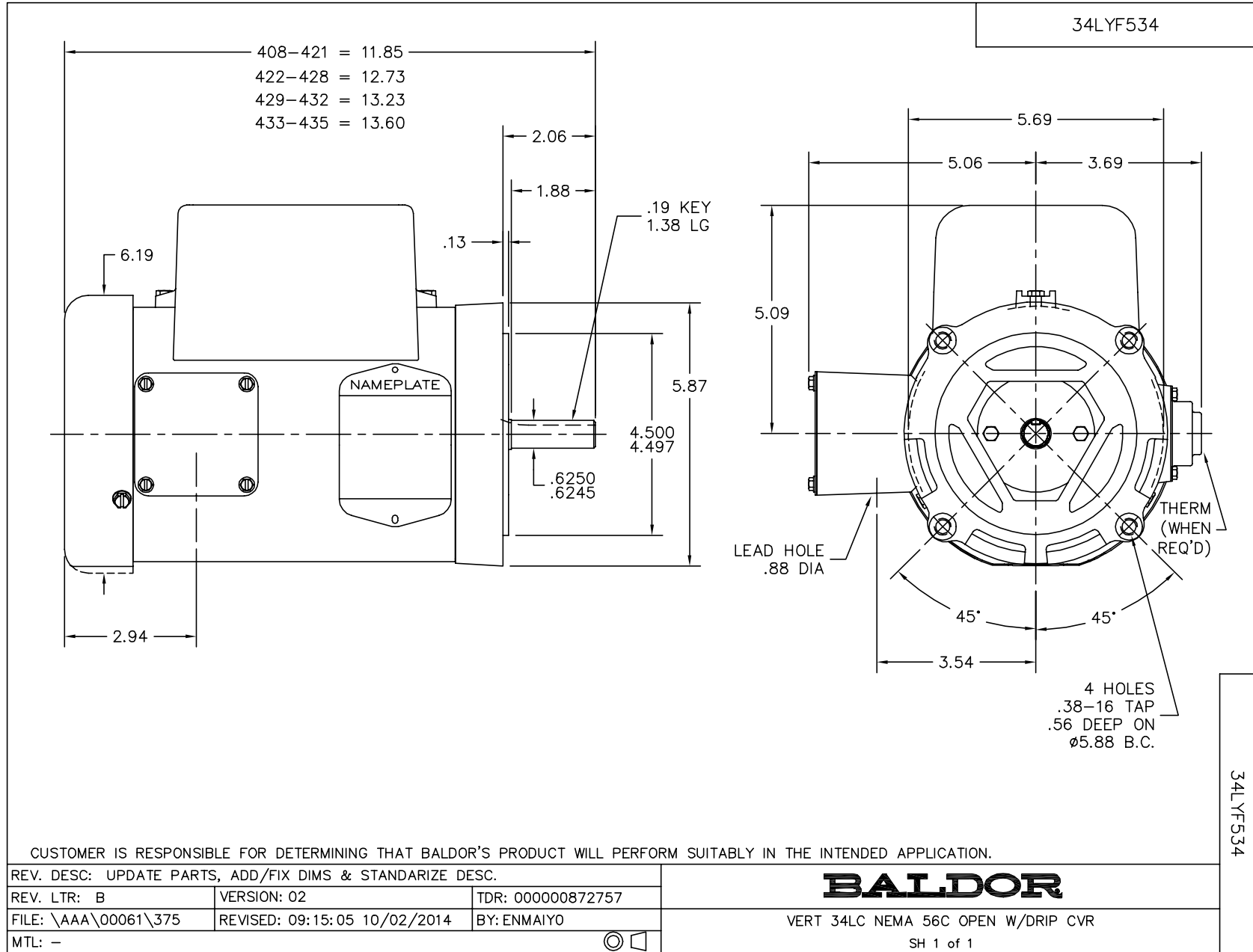
WINDING # 34WG954

Typical performance - not guaranteed values.

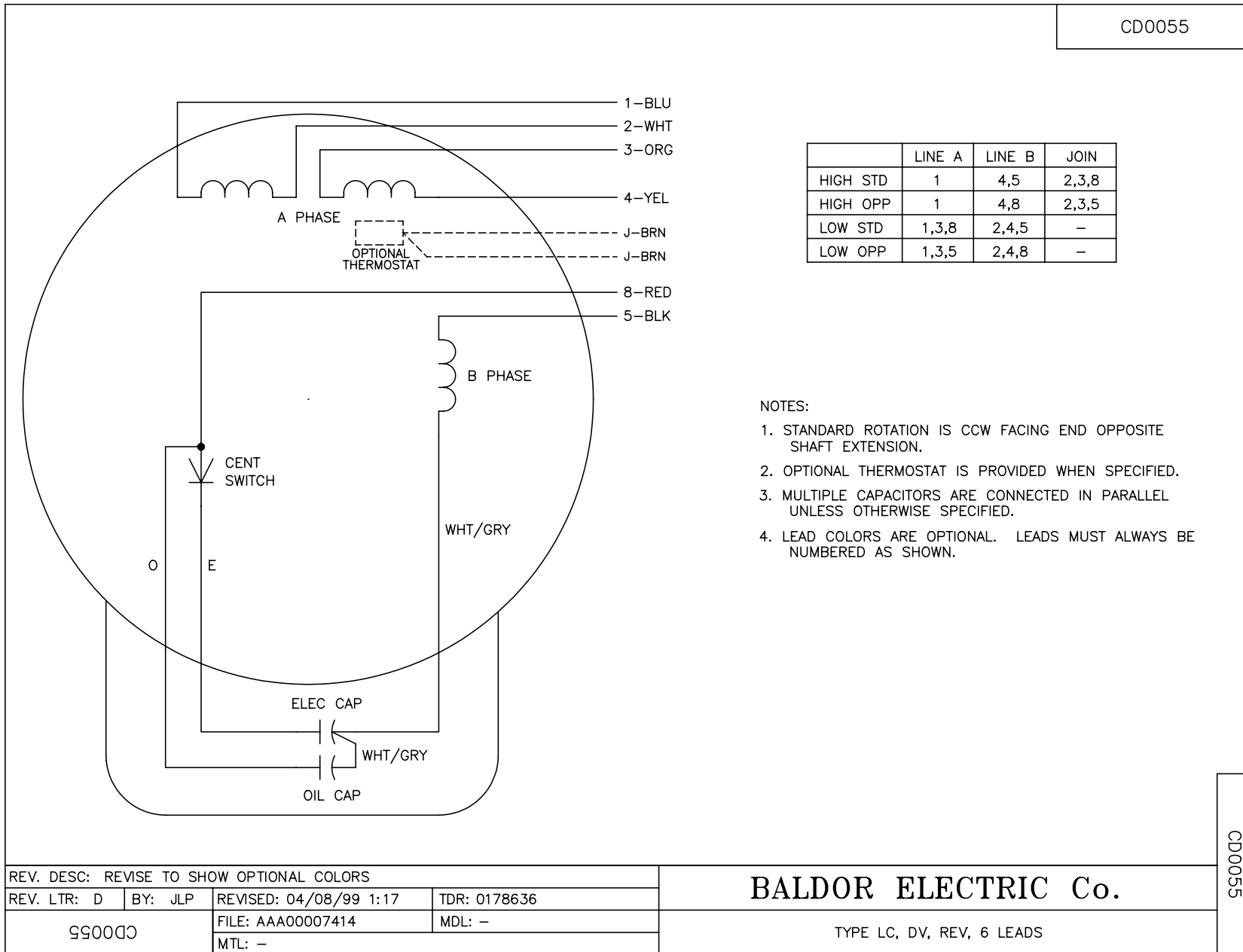
0.33 HP 1 PH 60 HZ 1740 RPM 230 V 3418LC  
 TORQUES(LB-FT): PO=2.46 PU=2.08 LR=3.51 LRA=12.36



3/23/2020 ACPERF, record # 49397



CD0055



REV. DESC: REVISE TO SHOW OPTIONAL COLORS			
REV. LTR: D	BY: JLP	REVISED: 04/08/99 1:17	TDR: 0178636
99000		FILE: AAA00007414	MDL: -
CD0055		MTL: -	

**BALDOR ELECTRIC Co.**

TYPE LC, DV, REV, 6 LEADS

CD0055