

BALDOR® • RELIANCE 

Product Information Packet

VEJMM3211T

3HP,1765RPM,3PH,60HZ,182JM,3630M,ODP,F1

| Part Detail | | | | | | | |
|-------------|--------|-------------|------------|-------------|--------|---------------|------------|
| Revision: | C | Status: | PRD/A | Change #: | | Proprietary: | No |
| Type: | AC | Elec. Spec: | 36WGS658 | CD Diagram: | CD0005 | Mfg Plant: | |
| Mech. Spec: | 36Q830 | Layout: | 36LYQ830 | Poles: | 04 | Created Date: | 07-18-2016 |
| Base: | N | Eff. Date: | 08-08-2019 | Leads: | 9#16 | | |

| Specs | | | |
|---------------------------------|-------------------------|--------------------------------|-----------------------|
| Catalog Number: | VEJMM3211T | Insulation Class: | F |
| Enclosure: | ODP | Inverter Code: | Inverter Ready |
| Frame: | 182JM | KVA Code: | K |
| Frame Material: | Steel | Lifting Lugs: | Standard Lifting Lugs |
| Output @ Frequency: | 3.000 HP @ 60 HZ | Locked Bearing Indicator: | Locked Bearing |
| Synchronous Speed @ Frequency: | 1800 RPM @ 60 HZ | Motor Lead Quantity/Wire Size: | 9 @ 16 AWG |
| Voltage @ Frequency: | 460.0 V @ 60 HZ | Motor Lead Exit: | Ko Box |
| | 230.0 V @ 60 HZ | Motor Lead Termination: | Flying Leads |
| XP Class and Group: | None | Motor Type: | 3630M |
| XP Division: | Not Applicable | Mounting Arrangement: | F1 |
| Agency Approvals: | UR | Power Factor: | 74 |
| | CSA EEV | Product Family: | General Purpose |
| | CSA | Pulley End Bearing Type: | Ball |
| Auxillary Box: | No Auxillary Box | Pulley Face Code: | C-Face |
| Auxillary Box Lead Termination: | None | Pulley Shaft Indicator: | Tapped & Key |
| Base Indicator: | No Mounting | Rodent Screen: | Included |
| Bearing Grease Type: | Polyrex EM (-20F +300F) | RoHS Status: | ROHS COMPLIANT |
| Blower: | None | Shaft Extension Location: | Pulley End |

| | | | |
|---------------------------------------|---------------------------|------------------------------------|---------------------|
| Current @ Voltage: | 4.200 A @ 460.0 V | Shaft Ground Indicator: | No Shaft Grounding |
| | 8.400 A @ 230.0 V | Shaft Rotation: | Reversible |
| | 8.500 A @ 208.0 V | Shaft Slinger Indicator: | Shaft Slinger |
| Design Code: | B | Speed Code: | Single Speed |
| Drip Cover: | Drip Cover | Motor Standards: | NEMA |
| Duty Rating: | CONT | Starting Method: | Direct on line |
| Electrically Isolated Bearing: | Not Electrically Isolated | Thermal Device - Bearing: | None |
| Feedback Device: | NO FEEDBACK | Thermal Device - Winding: | None |
| Front Face Code: | Standard | Vibration Sensor Indicator: | No Vibration Sensor |
| Front Shaft Indicator: | None | Winding Thermal 1: | None |
| Heater Indicator: | No Heater | Winding Thermal 2: | None |

| Nameplate NP3553LUA | |
|---------------------------|----------------------------|
| CAT.NO. | VEJMM3211T |
| SPEC. | 36Q830S658G1 |
| HP | 3 |
| VOLTS | 230/460 |
| AMPS | 8.4/4.2 |
| RPM | 1765 |
| FRAME | 182JM |
| HZ | 60 |
| PH | 3 |
| SF | 1.15 |
| CODE | K |
| DES | B |
| CLASS | F |
| NEMA NOM. EFF | 89.5 |
| PF | 74 |
| RATING | 40C AMB-CONT |
| CC | 010A |
| USABLE AT 208V | 8.5 |
| DE | 6207 |
| ODE | 6205 |
| ENCL | ODP |
| SN | |
| VPWM INVERTER READY | |
| CT30-60(2:1) VT3-60(20:1) | |
| USABLE AT | 50Hz 3HP 190/380V 9.8/4.9A |
| | SF1.0 |

| Parts List | | |
|-------------|--|----------|
| Part Number | Description | Quantity |
| SA324430 | SA 36Q830S658G1 | 1.000 EA |
| RA312264 | RA 36Q830S658G1 | 1.000 EA |
| 36CB3004 | 36 CB CASTING W/1.09 DIA LEAD HOLE @ 6:0 | 1.000 EA |
| 51XB1016A07 | 10-16 X 7/16 HXWSSLD SERTYB | 2.000 EA |
| 11XW1032G06 | 10-32 X .38, TAPTITE II, HEX WSHR SLTD U | 1.000 EA |
| 36EP3204B01 | B00 W/DRIP CVR | 1.000 EA |
| HW4500A01 | 1641B(ALEMITE)400 UNIV, GREASE FITT | 1.000 EA |
| HA1103A08 | RODENT SCREEN, 36 FRAME, OPEN, FRONT END | 1.000 EA |
| 51XW1032A06 | 10-32 X .38, TAPTITE II, HEX WSHR SLTD S | 2.000 EA |
| HW1000A10 | #10 FLAT WASHER (SAE) | 4.000 EA |
| HW1000A10 | #10 FLAT WASHER (SAE) | 2.000 EA |
| HW5100A05 | WVY WSHR F/205 & 304 BRGS | 1.000 EA |
| 36EP1402A11 | PU ENDPLATE, MACH | 1.000 EA |
| HW4500A01 | 1641B(ALEMITE)400 UNIV, GREASE FITT | 1.000 EA |
| 36AD2000 | AIR BAFFLE | 1.000 EA |
| 60XW0632A06 | 6-32 X 3/8 TORX HEAD SCREW TAPTITE II | 4.000 EA |
| 15XF0632A06 | 6-32 X 3/8 PHILL PAN HD TYPE F | 4.000 EA |
| HA1102A07 | RODENT SCREEN 36 OPEN FACE | 2.000 EA |
| 51XW1032A06 | 10-32 X .38, TAPTITE II, HEX WSHR SLTD S | 4.000 EA |
| 10XN2520A26 | 1/4-20X 1 5/8 HEX HD | 4.000 EA |
| HW1001A25 | LOCKWASHER 1/4, ZINC PLT .493 OD, .255 I | 4.000 EA |
| 36FH4012A01 | DRIP COVER NOTCH BOTTOM, W/ PRIMER | 1.000 EA |
| 51XW1032A06 | 10-32 X .38, TAPTITE II, HEX WSHR SLTD S | 3.000 EA |
| 36CB4516 | 36 LIPPED CB LID - GALVANNEAL | 1.000 EA |

| Parts List (continued) | | |
|------------------------|--|----------|
| Part Number | Description | Quantity |
| 51XW0832A07 | 8-32 X .44, TAPTITE II, HEX WSHR SLTD SE | 4.000 EA |
| HA1005A07 | SLINGER, OD 2.25, ID 1.344, 307 BRG | 1.000 EA |
| HW2501D13 | KEY, 3/16 SQ X 1.375 | 1.000 EA |
| HA7000A01 | KEY RETAINER 7/8" DIA SHAFT | 1.000 EA |
| 85XU0407S04 | 4X1/4 U DRIVE PIN STAINLESS | 2.000 EA |
| MJ1000A02 | GREASE, MOBIL POLYREX EM - 124047 | 0.050 LB |
| MG1000Y03 | MUNSELL 2.53Y 6.70/ 4.60, GLOSS 20, | 0.022 GA |
| HA3101A25 | THRUBOLT 1/4-20 X 11.000 OHIO ROD | 4.000 EA |
| LC0005E01 | CONN.DIA./WARNING LABEL (LC0005/LB1119N) | 1.000 EA |
| NP3553LUA | ALUM SUPER-E VPWM INVERTER READY UL | 1.000 EA |
| G7PA1000 | PKG GRP, PRINT PK1034A06 | 1.000 EA |
| MN416A01 | TAG-INSTAL-MAINT no wire (1200/bx) 3/19 | 1.000 EA |

AC Induction Motor Performance Data

Record # 58171 - Typical performance - not guaranteed values

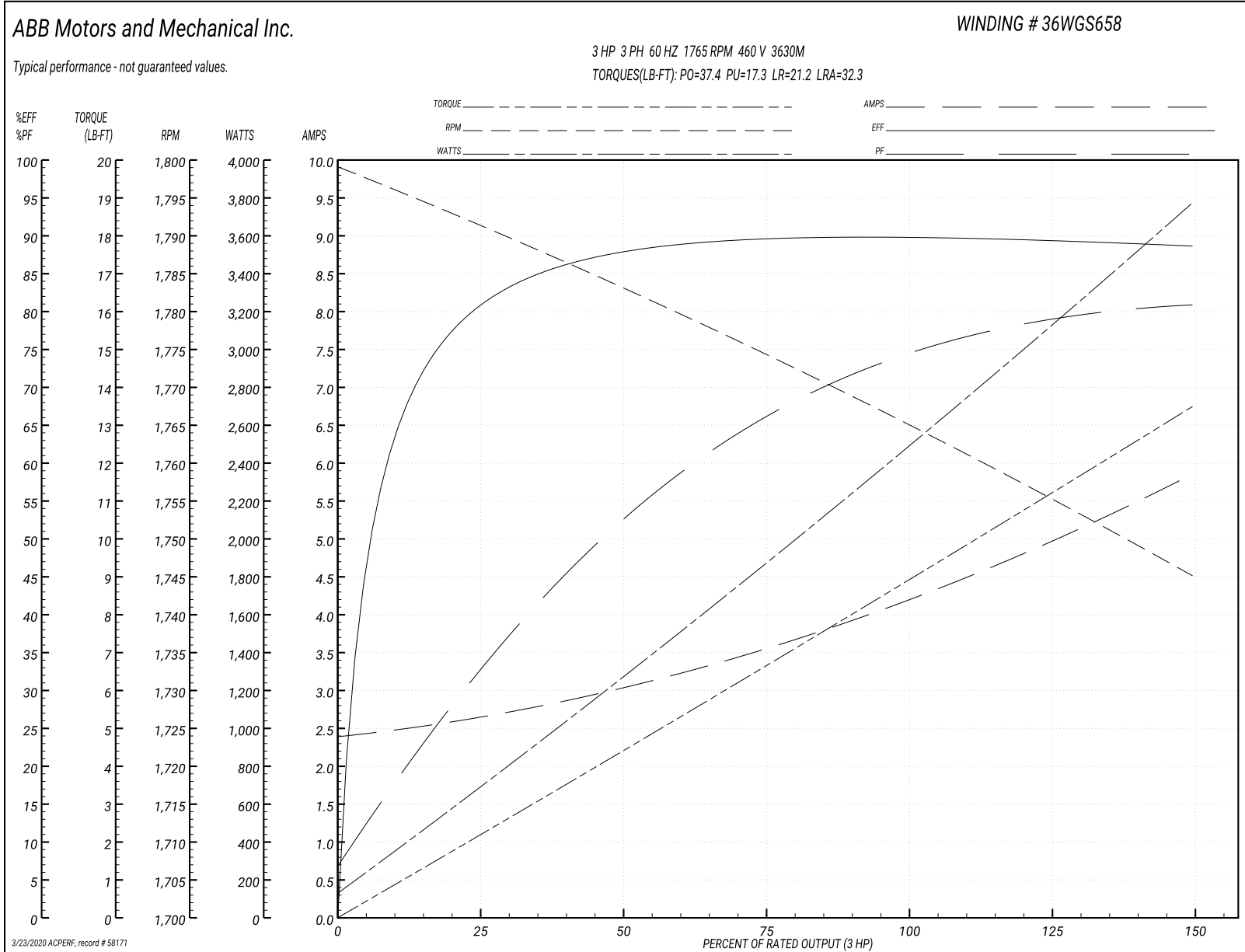
| | | |
|-------------------------------|--------------------|-----------------------|
| Winding: 36WGS658-R019 | Type: 3630M | Enclosure: ODP |
|-------------------------------|--------------------|-----------------------|

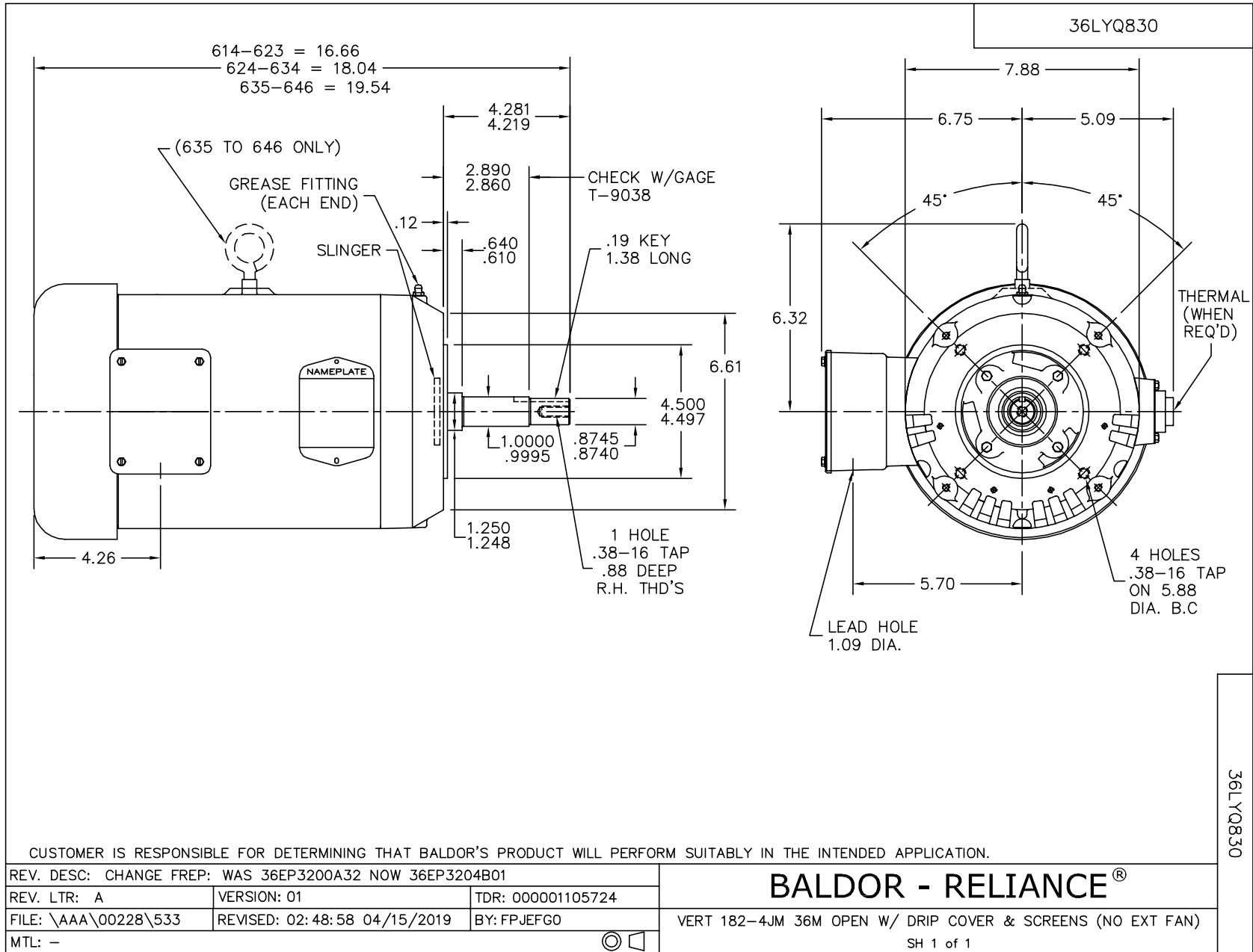
| Nameplate Data | | | | 460 V, 60 Hz: High Voltage Connection | |
|-----------------------|--------------|--------------|----|--|--------------------------|
| Rated Output (HP) | 3 | | | Full Load Torque | 8.87 LB-FT |
| Volts | 230/460 | | | Start Configuration | direct on line |
| Full Load Amps | 8.4/4.2 | | | Breakdown Torque | 37.4 LB-FT |
| R.P.M. | 1765 | | | Pull-up Torque | 17.3 LB-FT |
| Hz | 60 | Phase | 3 | Locked-rotor Torque | 21.2 LB-FT |
| NEMA Design Code | B | KVA Code | K | Starting Current | 32.3 A |
| Service Factor (S.F.) | 1.15 | | | No-load Current | 2.43 A |
| NEMA Nom. Eff. | 89.5 | Power Factor | 74 | Line-line Res. @ 25°C | 3.8716 Ω |
| Rating - Duty | 40C AMB-CONT | | | Temp. Rise @ Rated Load | 24°C |
| S.F. Amps | | | | Temp. Rise @ S.F. Load | 28°C |
| | | | | Locked-rotor Power Factor | 43 |
| | | | | Rotor inertia | 0.279 LB-FT ² |

Load Characteristics 460 V, 60 Hz, 3 HP

| % of Rated Load | 25 | 50 | 75 | 100 | 125 | 150 | S.F. |
|-----------------|--------|------|--------|--------|--------|--------|------|
| Power Factor | 33 | 53 | 66 | 73 | 79 | 81 | 77 |
| Efficiency | 80.2 | 87.5 | 89.5 | 89.7 | 89.5 | 88.7 | 89.6 |
| Speed | 1791.1 | 1783 | 1774.5 | 1765.5 | 1755.7 | 1744.8 | 1760 |
| Line amperes | 2.6 | 2.99 | 3.54 | 4.25 | 4.97 | 5.83 | 4.68 |

Performance Graph at 460V, 60Hz, 3.0HP Typical performance - Not guaranteed values





CD0005

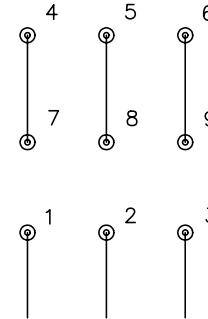


LOW VOLTAGE
(2Y)



LINE

HIGH VOLTAGE
(1Y)



LINE

NOTES:

1. INTERCHANGE ANY TWO LINE LEADS TO REVERSE ROTATION.
2. OPTIONAL THERMOSTATS ARE PROVIDED WHEN SPECIFIED.
3. ACTUAL NUMBER OF INTERNAL PARALLEL CIRCUITS MAY BE A MULTIPLE OF THOSE SHOWN ABOVE.
4. LEAD COLORS ARE OPTIONAL. LEADS MUST ALWAYS BE NUMBERED AS SHOWN.

REV. DESC: REVISE TO SHOW OPTIONAL COLORS

REV. LTR: E BY: JLP

REVISED: 01/19/99 10:15

TDR: 0171435

90000

FILE: AAA00005140

MDL: -

MTL: -

BALDOR ELECTRIC Co.

3PH, DV, 9 LEADS

CD0005