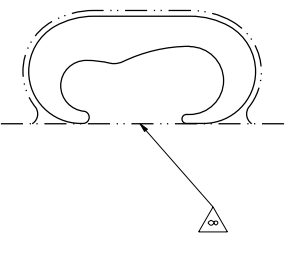
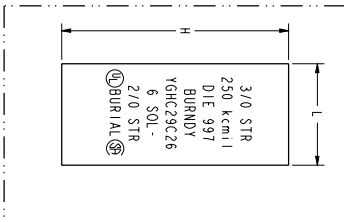


CATALOG NUMBER	COMMERCIAL COPPER CABLE RANGE / GROUND ROD TO COPPER CABLE	METRIC COPPER CABLE RANGE		H	L	INSTALLATION DATA				
		RUN	TAP			DIE INDEX NO.	Y150/Y35 HYPRESS™	Y45 HYPRESS™	Y46 HYPRESS™	NO. OF CRIMS
YGH2C22	#6 SOL. (Ø.162) - #2 STR. (Ø.292) 1/4" ROD	10 mm (Ø1.6 mm)	35 mm (Ø1.6 mm)	1.16 (30)	.75 (19)	C	U-C	U-C	U-C	1
YGH2C62	1 STR. (Ø.328) - 2/0 STR. (Ø.419) 3/8" ROD	35 mm (Ø1.6 mm)	70 mm (Ø10.9 mm)	1.41 (36)	.75 (19)	0	U-0	U-0	U-0	1
YGH2C626	1 STR. (Ø.328) - 2/0 STR. (Ø.419) 3/8" ROD	35 mm (Ø1.6 mm)	70 mm (Ø10.9 mm)	1.54 (39)	.75 (19)	0	U-0	U-0	U-0	1
YGH2C26	3/0 STR. (Ø.470) - 250 kcmil (Ø.575) 1/2" OR 5/8" ROD	95 mm (Ø12.5 mm)	120 mm (Ø14.4 mm)	1.97 (50)	.75 (19)	997	U997	U997	U997	1
YGH2C2629	3/0 STR. (Ø.470) - 250 kcmil (Ø.575) 1/2" OR 5/8" ROD	95 mm (Ø12.5 mm)	120 mm (Ø14.4 mm)	2.05 (52)	.88 (22)	997	U997	U997	U997	1
YGH3C4C26	300 kcmil (Ø.630) - 500 kcmil (Ø.813) 3/4" ROD	150 mm (Ø16 mm)	240 mm (Ø20.3 mm)	2.42 (62)	.88 (22)	1011	U1011	S1011	P1011	2
YGH3C4C29	300 kcmil (Ø.630) - 500 kcmil (Ø.813)	150 mm (Ø16 mm)	240 mm (Ø20.3 mm)	2.67 (68)	.88 (22)	1011	U1011	S1011	P1011	2
YGH3C4C24	300 kcmil (Ø.630) - 500 kcmil (Ø.813)	150 mm (Ø16 mm)	240 mm (Ø20.3 mm)	2.91 (74)	1.10 (28)	1011	U1011	S1011	P1011	3

- C**
- NOTES:
- MATERIAL: COPPER
  - GROOVES ARE PREFILLED WITH PENETROX™ ET.
  - WHERE A "U" OR "PU" IS RECOMMENDED WITH THE Y45 HYPRESS™, A Y150/Y35 ADAPTER MUST BE USED.
  - WHERE A "U" OR "PU" IS RECOMMENDED WITH THE Y46 HYPRESS™, A P-ULADP ADAPTER MUST BE USED.
  - LISTED UNDER UL486A FOR COPPER WIRE CONNECTORS.
  - SUITABLE FOR DIRECT BURIAL IN EARTH OR CONCRETE.
  - DIMENSIONS IN BRACKETS [ ] ARE IN MILLIMETERS.
  - CONNECTORS ARE INDIVIDUALLY SEALED IN CLEAR POLYETHYLENE SHEET.
  - IN REFERENCING CONNECTORS WITHOUT PENETROX™ OXIDE INHIBITOR ADD SUFFIX "NP" TO THE END OF THE CATALOG NUMBER.
  - THESE CONNECTORS CAN ONLY BE INSTALLED USING THE Y150, Y45 OR Y46 HYPRESS™ WITH THE RECOMMENDED DIES. THESE CONNECTORS CAN NOT BE INSTALLED WITH THE Y35 AND Y39 HYPRESS™.
  - FOR ELECTRO-TIN PLATED CONNECTOR, ADD SUFFIX "TN" TO THE CATALOG NUMBER.
  - GROOVES ARE FILLED WITH PENETROX™ GIZA.



- A**
- THESE CONNECTORS UL LISTED TO UL467 (GROUNDING AND BONDING) FOR CONDUCTOR TO GROUND ROD APPLICATIONS.
  - CSA CERTIFIED TO C22.2 NO. 41 (GROUNDING AND BONDING) FOR CONDUCTOR TO GROUND ROD APPLICATIONS.
  - THESE CONNECTORS CSA CERTIFIED TO C22.2 NO. 41 (GROUNDING AND BONDING) FOR CONDUCTOR TO GROUND ROD APPLICATIONS.
  - AS A FINAL CHECK AFTER COMPRESSION, BE SURE THE DIE EMBOSSES THE SAME DIE INDEX REFERENCE ON THE FACE OF THE COMPRESSED AREA AS APPEARS ON THE BODY OF THE CONNECTION.

TO ORDER BURNDY® PRODUCTS CALL

UNITED STATES  
1-800-346-5175 (LONDON/ENRY, NH)

CANADA:  
1-800-361-8915 (OUBEC)

1-800-361-9491 (CALL OTHER PROVINCES)

FOR PRODUCT INFO: <http://www.burndy.com>

ITEM NO.	N/A	CONNECTION: COMPRESSION GROUND
DRWG. NO.	YGH-C-- (TABLE)	
REV. NO.	12/08/02	
DATE APPL. ESR	05/07/03	
DATE APPL. RUC	03/21/02	
DATE APPL. A. MURDO	03/21/02	
PROD. MFG.		
PRODUCT SIZE		SIZE
REV.		
REV.		

87 BURNDY

PRINTING NO. S0066223-01

SHEET OF 1