

Bolted Terminals, Type NAH For Copper Cable to Pad

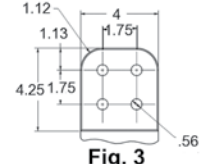
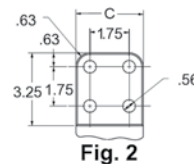
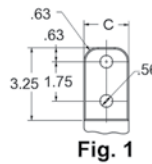
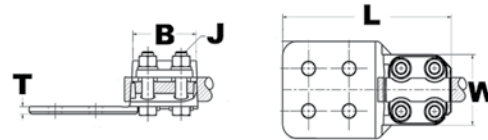
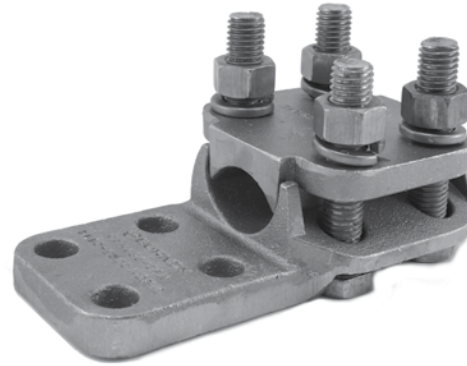
Material: Copper Alloy

Hardware: DURIUTM Silicon Bronze

Copper alloy terminal for joining a wide range of cable to equipment pads. Tongue is side formed to provide adequate clearance and terminal is designed for one-wrench installation.

Notes :

- Plated versions: add the required suffix to the catalog number. -TN for regular tin plating.
- Please contact factory for other sizes, combinations and availability



Catalog Number	Fig. #	Copper Stranded Range	Copper Solid Range	B	J Dia.	L	C	T	W		
NAH292N	1	6 AWG-250 kcmil	6 AWG-4/0 AWG	2.62	1/2	5.88	1.50	0.25	2.44		
NAH2934N	2						3.00				
NAH342N	1	1/0 -500 kcmil	1/0 AWG-4/0 AWG				2.00	0.31	2.56		
NAH3434N	2						3.00	0.25			
NAH402N	1	2/0 AWG-800 kcmil	3/0 AWG-4/0 AWG			2.88	1/2	6.88	2.00	0.38	2.81
NAH4034N	2								3.00	0.31	
NAH4044N	3							4.00			
NAH442N	1	4/0 AWG-1000 kcmil	N/A					3.06	1/2	6.12	2.00
NAH4434N	2			3.00	0.38						
NAH4444N	3			4.00	0.31						
NAH4634N	2	1000 kcmil-1500 kcmil	N/A	3.06	1/2	6.31	3.00	0.41	3.19		
NAH482N	1	500 kcmil-2000 kcmil	N/A	3.25	1/2	6.50	2.00	0.69	3.38		
NAH4834N	2						3.00	0.50			
NAH4844N	3					4.00	0.44				
NAH4862N	1	2000 kcmil-2500 kcmil	N/A	3.75	5/8	7.12	3.00	0.63	3.96		
NAH48634N	2										