

Mechanical Grounding

Parallel or 90° Copper Cable Connection to Rod or Pipe with Same Connector; Type GAR

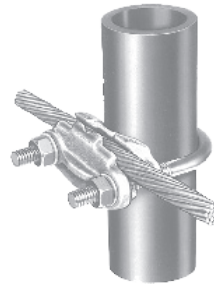
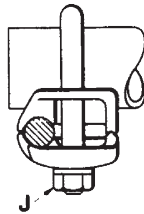
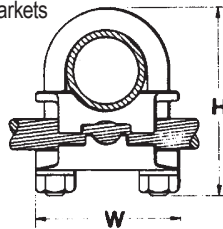
Type GAR

For Parallel or 90° Copper Cable Connection to Rod or Pipe with the same connector

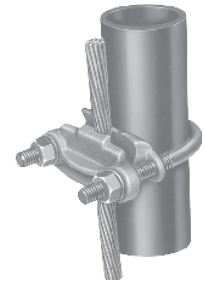
High copper alloy ground connector for joining a range of cable, parallel, or at right angles, to rod or tube. Especially good for fence posts. High copper alloy cast body with DURIUM™ Silicon Bronze U-bolts, nuts, and lockwashers, permit entire connection to be buried in earth or concrete without danger of corrosion.

Features & Benefits

- Wire to Rebar
- Fence Post Grounding Connector
- Wire to Pipe
- One-wrench installation
- Rated for Direct Burial in earth or concrete
- UL467 Listed for US and Canadian Markets
- Select connectors qualified to IEEE-837-2014



Wire at Right Angle to Pipe



Wire Parallel to Pipe

| Catalog Number | Conductor | | | | H | J | W |
|----------------|--------------|------------------------|------------|-------------------|-------|-----|-------|
| | Tube I.P.S.* | Rod Size or O.D. Range | Rebar Size | Cable Range | | | |
| GAR114C | 1/4 | 1/2 | — | 8 Sol. - 4 Str. | 2-1/2 | 3/8 | 1-7/8 |
| GAR1126 | 1/4 | 1/2 | — | 4 Sol. - 2/0 Str. | 2-1/2 | 3/8 | 1-7/8 |
| GAR1129 | 1/4 | 1/2 | — | 2/0 Sol. - 250 | 2-1/2 | 3/8 | 1-7/8 |
| GAR644C | 3/8 | 5/8 - 3/4 | 5 - 6 | 8 Sol. - 4 Str. | 2-7/8 | 3/8 | 2-1/8 |
| GAR6426 | 3/8 | 5/8 - 3/4 | 5 - 6 | 4 Sol. - 2/0 Str. | 2-7/8 | 3/8 | 2-1/8 |
| GAR6429 | 3/8 | 5/8 - 3/4 | 5 - 6 | 2/0 Sol. - 250 | 2-7/8 | 3/8 | 2-1/8 |
| GAR6434 | 3/8 | 5/8 - 3/4 | 5 - 6 | 300-500 | 3-1/2 | 1/2 | 2-1/2 |
| GAR144C | 1/2-3/4 | 7/8 - 1 | 7 - 8 | 8 Sol. - 4 Str. | 2-3/4 | 3/8 | 2-3/8 |
| GAR1426 | 1/2-3/4 | 7/8 - 1 | 7 - 8 | 4 Sol. - 2/0 Str. | 3 | 3/8 | 2-3/8 |
| GAR1429 | 1/2-3/4 | 7/8 - 1 | 7 - 8 | 2/0 Sol. - 250 | 3 | 3/8 | 2-3/8 |
| GAR1434 | 1/2-3/4 | 7/8 - 1 | 7 - 8 | 300-500 | 3-3/4 | 1/2 | 2-3/4 |
| GAR154C | 1 | 1-1/8 - 1-1/4 | 9 - 10 | 8 Sol. - 4 Str. | 2-7/8 | 3/8 | 2-5/8 |
| GAR1526 | 1 | 1-1/8 - 1-1/4 | 9 - 10 | 4 Sol. - 2/0 Str. | 2-7/8 | 3/8 | 2-5/8 |
| GAR1529 | 1 | 1-1/8 - 1-1/4 | 9 - 10 | 2/0 Sol. - 250 | 3-3/8 | 3/8 | 2-5/8 |
| GAR1534 | 1 | 1-1/8 - 1-1/4 | 9 - 10 | 300-500 | 4-1/2 | 1/2 | 2-5/8 |
| GAR164C | 1-1/4 | 1-3/8 - 1-1/2 | 11 | 8 Sol. - 4 Str. | 3-1/2 | 3/8 | 3 |
| GAR1626 | 1-1/4 | 1-3/8 - 1-1/2 | 11 | 4 Sol. - 2/0 Str. | 3-1/2 | 3/8 | 3 |
| GAR1629 | 1-1/4 | 1-3/8 - 1-1/2 | 11 | 2/0 Sol. - 250 | 3-1/2 | 3/8 | 3 |
| GAR1634 | 1-1/4 | 1-3/8 - 1-1/2 | 11 | 300-500 | 4-1/4 | 1/2 | 3-3/8 |

* This is the "Trade" Pipe Size reference.