

EXPANDED RANGES



The following list of connector types can accommodate a range of conductors when crimped using the 644 and 444S family of tools:

COPPER CONNECTORS

Copper HYLUG™ & HYLINK™ Connectors Types YA, YA-L, YAB, YS, YS-L, YSR, YST, YS-T, YSP-T			
Catalog No.		Copper Wire Size	Copper Expanded Wire Range
Terminal*	Splice**		
YA4C- YA3C- YA2C- YA1C-	YS4C- YS3C- YS2C- YS1C-	#4 AWG #3 AWG #2 AWG #1 AWG	#4 AWG #3 - #4 AWG #2 - #4 AWG #1 - #4 AWG
YA25- YA26- YA27- YA28-	YS25- YS26- YS27- YS28-	1/0 AWG 2/0 AWG 3/0 AWG 4/0 AWG	1/0 - #4 AWG 2/0 - #4 AWG 3/0 - #2 AWG 4/0 - #1 AWG
YA29- YA30- YA31- YA32- YA34-	YS29- YS30- YS31- YS32- YS34-	250 kcmil 300 kcmil 350 kcmil 400 kcmil 500 kcmil	250 kcmil - 1/0 AWG 300 kcmil - 2/0 AWG 350 kcmil - 3/0 AWG 400 kcmil - 4/0 AWG 500 kcmil - 4/0 AWG
YA36- YA39- YA40-	YS36- YS39- YS40-	600 kcmil 750 kcmil 800 kcmil	600 - 250 kcmil 750 - 500 kcmil 800 - 500 kcmil
YA44-	YS44-	1000 kcmil	1000 - 750 kcmil

* 1 Crimp
** 1 Crimp per side

ALUMINUM CONNECTORS

Aluminum HYLUG™ & HYLINK™ Connectors Types YA-A & YS-A			
Catalog No.		Copper or Aluminum Wire Size	Copper or Aluminum Expanded Wire Range
Terminal*	Splice**		
YA6CA- YA4CA- YA2CA- YA1CA-	YS6CA- YS4CA- YS2CA- YS1CA-	#6 AWG #4 AWG #2 AWG #1 AWG	#6 AWG #4 - #6 AWG #2 - #6 AWG #1 - #2 AWG
YA25A- YA26A- YA27A- YA28A-	YS25A- YS26A- YS27A- YS28A-	1/0 AWG 2/0 AWG 3/0 AWG 4/0 AWG	1/0 - #1 AWG 2/0 - #1 AWG 3/0 - #1 AWG 4/0 - #1 AWG
YA29A- YA30A- YA31A- YA32A- YA34A-	YS29A- YS30A- YS31A- YS32A- YS34A-	250 kcmil 300 kcmil 350 kcmil 400 kcmil 500 kcmil	250 kcmil - 1/0 AWG 300 kcmil - 2/0 AWG 350 kcmil - 3/0 AWG 400 kcmil - 4/0 AWG 500 kcmil - 4/0 AWG
YA36A- YA39A- YA40A- YA42A- †	YS36A- YS39A- YS40A- YS42A- ‡	600 kcmil 750 kcmil 800 kcmil 900 kcmil ▲	600 - 250 kcmil 750 - 500 kcmil 800 - 500 kcmil 900 - 600 kcmil
YA44A-	YS44A-	1000 kcmil	1000 - 750 kcmil

* 1 Crimp
** 1 Crimp per side
▲ 900 AL only
† 2 Crimps
‡ 2 Crimps per side

AYP/AYPO ALUMINUM CONNECTORS

(Aluminum Conductor Only)				
Wire Size	Expanded Range	Pin		# Crimps
		Straight	Offset	
#6 AWG	#6 AWG	AYP6	—	1
#4 AWG	#4 AWG	AYP4	—	1
#2 AWG	#4 - #2 AWG	AYP2	—	1
#1 AWG	#2 - #1 AWG	AYP1	—	1
1/0 AWG	#1 - 1/0 AWG	AYP1/0	—	1
2/0 AWG	#1 - 2/0 AWG	AYP2/0	AYPO2/0	2
3/0 AWG	#1 - 3/0 AWG	AYP3/0	AYPO3/0	2
4/0 AWG	#1 - 4/0 AWG	AYP4/0	AYPO4/0	2
250 kcmil	1/0 - 250 kcmil	AYP250	AYPO250	2
300 kcmil	2/0 - 300 kcmil	AYP300	AYPO300	2
350 kcmil	3/0 - 350 kcmil	AYP350	AYPO350	2
400 kcmil	4/0 - 400 kcmil	AYP400	AYPO400	2
500 kcmil	4/0 - 500 kcmil	AYP500	AYPO500	2
600 kcmil	250 - 600 kcmil	AYP600	AYPO600	3
750 kcmil	500 - 750 kcmil	AYP750	AYPO750	3



TYPES AYP, AYPO (Continued)



AL9CU



AL9CU

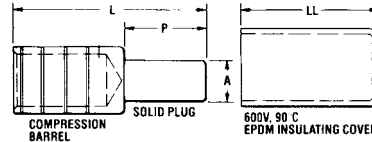


Fig 1: TYPE AYP (Straight)

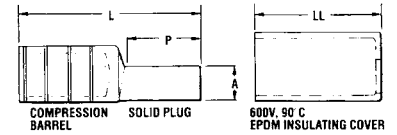
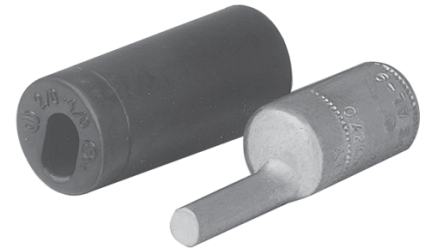


Fig 2: TYPE AYPO (Offset)

Catalog Number	AL Class B CU Class B, C	Copper Flex	Fig. No.	Dimensions					Installation Tooling ▲				Wire Strip Length			
				A ▼ Pin Dia.	Pin Size Equiv.	P Pin Length	L Overall Length	LL Cover Length	HYTOOL™		Die Index & Emboss.					
									Dieless Tools (# of crimps)	+ MD6		35 & 750, 46* Series (# of crimps)		Color Code		
AYP6	6 AWG ●	#8 Class I, DLO	1	0.23	4 AWG	0.68	1.85	2.03	MY293 (2)** 444 Series (1) 644 Series (1) 81K Series (1)	W241 (2)	U25ART (1)	Tan	296	1-1/16		
AYP4	4 AWG	#6 Class I, DLO	1	0.23	4 AWG	0.68	1.85	2.03								
AYP2	2 AWG	#4 Class I, DLO	1	0.23	4 AWG	0.68	1.85	2.03								
AYP1	1 AWG	#2 Class I, DLO	1	0.26	3 AWG	0.84	2.01	2.03								
AYP1/0	1/0 AWG	#1 Class I, DLO	1	0.29	2 AWG	0.84	2.01	2.03								
AYPO2/0	2/0 AWG	1/0 Class I, DLO	2	0.33	1 AWG	1.09	2.70	2.23	MY293 (2)** 444 Series (1) 644 Series (1) 81K Series (2)	W660 (4)	U28ART (2)	White	298	1-1/8		
AYPO3/0	3/0 AWG	2/0 Class I, DLO	2	0.37	1/0 AWG	1.22	2.80	2.23								
AYPO4/0	4/0 AWG	3/0 Class I, DLO	2	0.42	2/0 AWG	1.22	2.80	2.23								
AYP250	250 kcmil	4/0 Class I, K, M, DLO	1	0.47	3/0 AWG	1.16	2.63	2.54	444 Series (1) 644 Series (1) 81K Series (2)	—	U31ART (2)	Brown	299	1-1/8		
AYPO250	250 kcmil		2	0.47	3/0 AWG	1.22	2.98	2.54								
AYPO300	300 kcmil	250 kcmil Class I, 262 DLO	2	0.53	4/0 AWG	1.34	3.08	2.54								
AYP350	350 kcmil		313 kcmil DLO	1	0.57	250 kcmil	1.34	2.75			2.54					
AYPO350	350 kcmil	2		0.57	250 kcmil	1.34	3.08	2.54								
AYPO400	400 kcmil	—	2	0.63	300 kcmil	1.60	3.43	2.81								
AYP500	500 kcmil	373 kcmil Class I, 373 DLO	1	0.68	350 kcmil	1.60	3.08	2.81								
AYPO500	500 kcmil		2	0.68	350 kcmil	1.60	3.43	2.81								
AYPO600	600 kcmil	444 kcmil DLO	2	0.73	400 kcmil	1.64	4.02	3.69								
AYP750	700 - 750 kcmil ‡900 kcmil Compact AL	535 kcmil DLO	1	0.81	500 kcmil	1.76	3.79	3.69			444 Series (1) 644 Series (1) 81K Series (3)	—	U39ART2 (3)	Yellow	936	1-3/4
AYPO750			2	0.81	500 kcmil	1.76	4.16	3.69								
AYP900	900 kcmil AL	—	1	0.91	650 kcmil	1.82	4.10	4.20								
AYPO900		—	2	0.91	650 kcmil	1.82	4.16	4.20								
AYPO1000	1000 kcmil	777 kcmil DLO	2	0.81	500 kcmil	1.76	4.17	—	444 Series (1) Y644MBH only (1)	—	—	—	—	1-3/4		

Scratch brushing of all conductors before making installation is recommended

▲ See tooling section of this catalog for complete tool and die listings.

** For MY293 use aluminum index plate at 1/0 setting for sizes #6 through 1/0 or at 4/0 setting for sizes 2/0 through 4/0.

+ Not UL Listed with these tools.

* Use PUADP1 adaptor with U dies in 46 Series Tools

■ Also accommodates compressed and compact conductors (except for 700 kcmil in 750 kcmil barrel).

‡ Listed using 444S / 644 Series Tools only.

◆ For applications greater than 2000 Volts consult cable manufacturer for voltage stress relief instructions.

▼ For copper equivalent wire size see Section O for Aluminum 1350 Cable Reference

All dimensions shown are for reference only.

● Aluminum wire only for 444S and 644 Series tooling