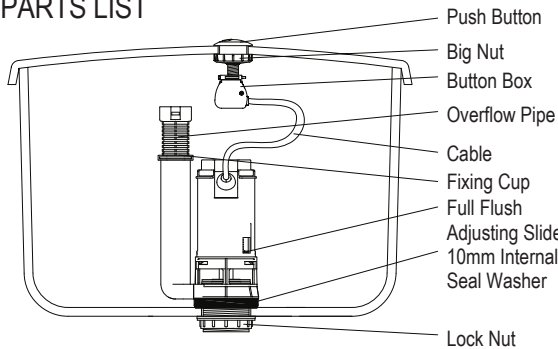


FLUIDMASTER®

CABLE DUAL FLUSH VALVE INSTALLATION

INSTRUCTIONS FOR TOILET CISTERN

PARTS LIST



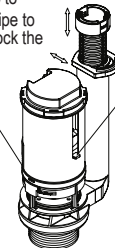
For Cisterns with an Outlet Hole approx 60mm (2.25") in diameter use Rubber Gasket (**supplied**).

TO GET THE BEST RESULTS FROM YOUR FLUIDMASTER VALVE, PLEASE READ THESE INSTRUCTIONS CAREFULLY.

NOTE: SAVE INSTRUCTION SHEET FOR FUTURE REFERENCE CONCERNING THIS VALVES OPERATION & MAINTENANCE.

WARNING: Fluidmaster shall not be responsible or liable for any failure of, or damage to, this plumbing product caused by its use in toilet cisterns containing high concentrations of chlorine or chlorine related products. Do not overtighten nuts or tank/bowl may crack. Always use quality Fluidmaster parts when installing or repairing. Fluidmaster will not be responsible or liable for use of non-Fluidmaster parts during installation or repair.

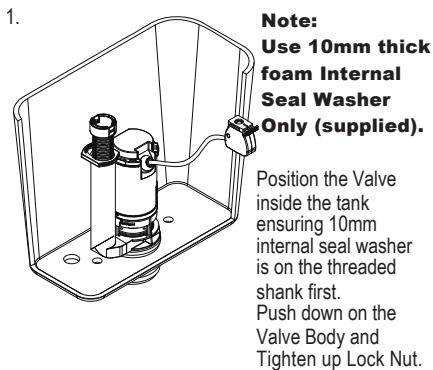
Unlock the Fixing Clip to adjust the Overflow Pipe to desired height, then lock the Fixing Clip.



FULL FLUSH ADJUSTING SLIDE
To reduce volume of flush move slide up.
To increase volume of flush move slide down.

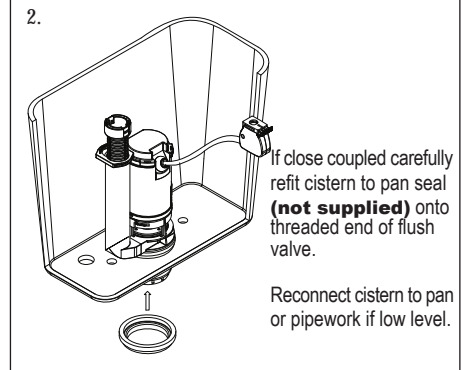
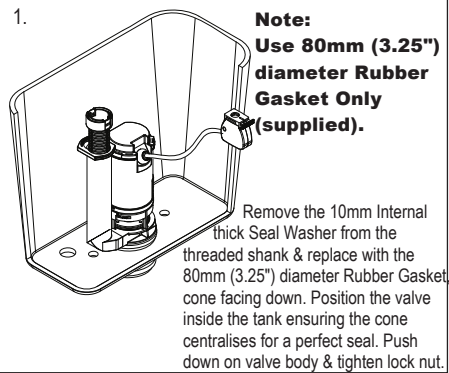
HALF FLUSH ADJUSTING SLIDE
To reduce volume of flush move slide up.
To increase volume of flush move slide down.

For Cisterns with an Outlet Hole approx 50mm (2") in diameter.



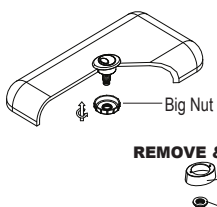
OR

For Cisterns with an Outlet Hole approx 60mm (2.25") in diameter.

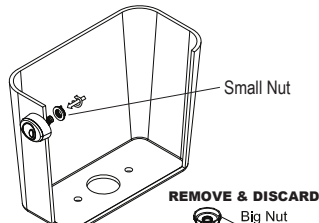


3. Select from one of the following 4 options, the correct mounting method for your cistern and follow the instructions.

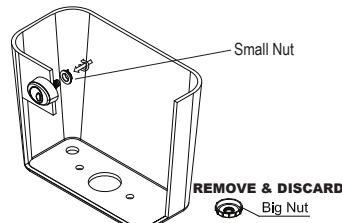
APPLICATION A (Top Push Button)



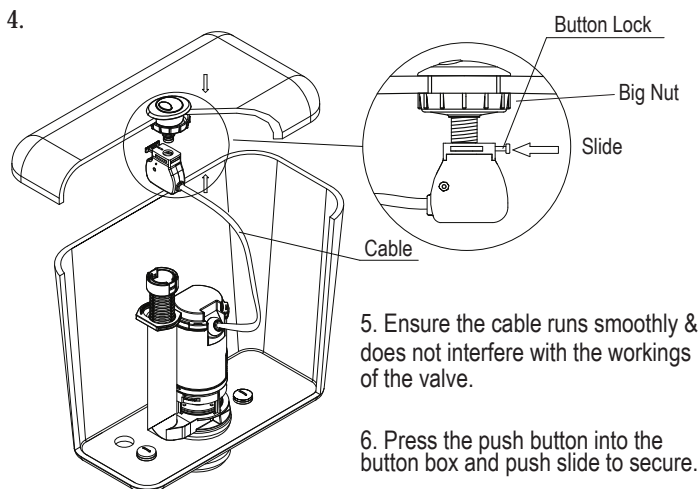
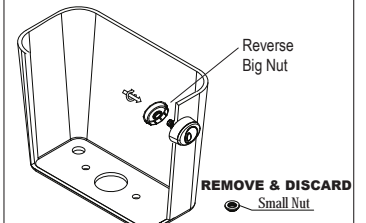
APPLICATION B (Side Push Button)



APPLICATION C (Front Push Button)



APPLICATION D (Corner Mounted Button)



IMPORTANT: DO NOT use plumber's putty to seal this fitting.

For more information in the U.K. contact:

Fluidmaster UK
One Harbour Road
Portishead, Bristol BS20 7BL
Tel: 01275 84 88 43
Fax: 01275 81 74 37
E-MAIL: sales@fluidmasterUK.com
WEB : www.fluidmasterUK.com

GUARANTEE:

This Fluidmaster product is guaranteed to be free from defective materials and workmanship for a period of one year. Units returned under guarantee to Fluidmaster USA or Fluidmaster UK will be replaced without charge. Always use quality Fluidmaster repair parts when maintaining your Fluidmaster products. Fluidmaster shall not be responsible or liable for any damages caused by products used in Fluidmaster valves that were not manufactured by Fluidmaster, Inc.

WARNING:

Fluidmaster, Inc. Shall not be liable for incidental or consequential damages, including costs of installation, water damage, personal injury or for any damages resulting from abuse or misuse of the product, from overtightening or from failure to install or maintain this plumbing product in accordance with the written instructions, including use of non-Fluidmaster parts. Do not use in-tank drop-in toilet bowl cleaners containing bleach or chlorine. Use of such products will result in damage to tank components and may cause flooding and property damage. Use of such products will void this warranty.

PART # CMI - 550

REV. 3 01/11

© 2011 by Fluidmaster, Inc.

® Registered Trademark of Fluidmaster, Inc.