

INSTALLATION INSTRUCTIONS

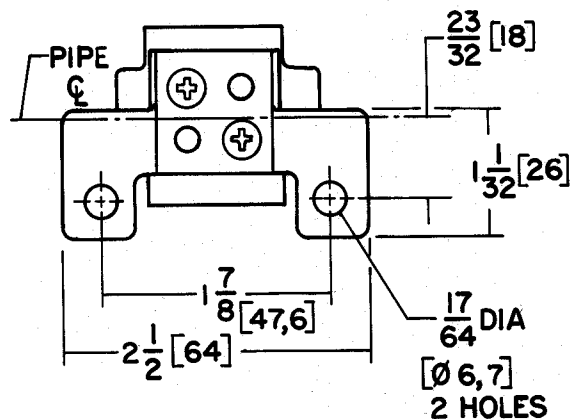
MOUNTING BRACKET

KIT NO. 160-800

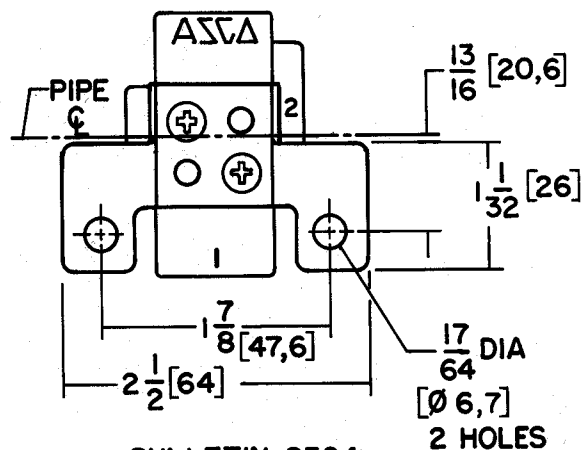
BULLETINS
 8308 8320
 8309 8322
 8310 8323
 8311 8324
 8262

ASCO

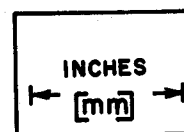
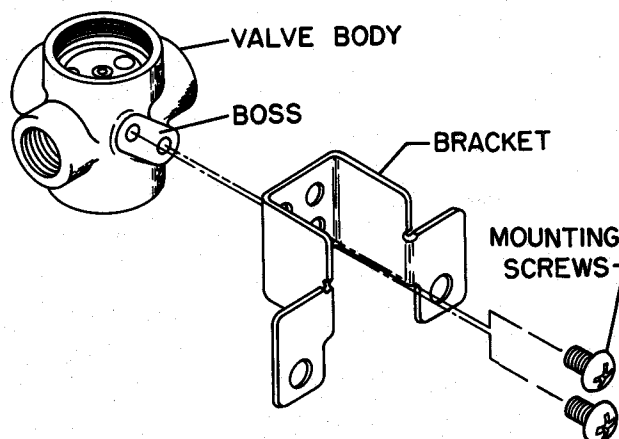
Form No. V5385R2



BULLETINS 8308, 8309, 8310,
8311, 8320, 8322, 8323, 8262



BULLETIN 8324



DESCRIPTION

This mounting bracket may be used with all valves having bodies in sizes 1/8" and 1/4" NPT for Bulletins 8308, 8309, 8310, 8311, 8320, 8322, 8323, 8324 and 8262. This kit consists of a single bracket and two self-tapping screws.

INSTALLATION

1. Place the mounting bracket against the boss on the valve body in any one of four positions (increments of 90°).
2. Insert the self-tapping screws. Tighten the screws, making sure the bracket and valve body are securely fastened.