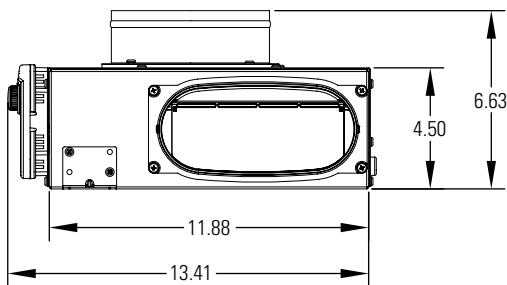
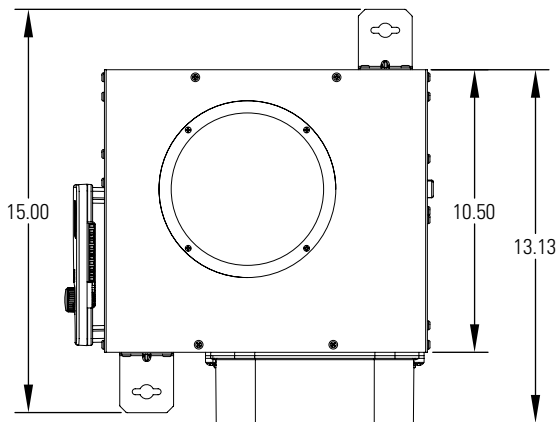


PRODUCT SPECIFICATIONS	
Overall Dimensions Not Including Collars	4.5"H x 10.5"W x 11.8"L including control
Inlet Collar	6" Round
Outlet Collar	6" Oval
Ventilation Time Dial Setting	Off, 15-60 minutes, Test/Reset
Ambient Temperature	0°F to 160°F
Outdoor Temperature Limit Settings	Setting A, no limit, time only "B", 105°F high limit, 20°F low limit "C", 100°F high limit, 30°F low limit "D", 95°F high limit, 40°F low limit
Voltage	115 VAC, 1 phase, 60 Hz
Power	Includes 5' power cord with 5-15P plug
Ducting	6" diameter flexible insulated duct
Warranty	5 years



FEATURES

- Unit is designed, when properly installed, to achieve ASHRAE Standard 62.2 2010
- Complies with 2012 IECC (2.8 cfm/watt)
- Control is integrated into the Ventilator
- High and Low Temperature Limit Lock-outs while maintaining ASHRAE 62.2 2010
- Simple plug-in installation
- Installation temperature range up to 160°F

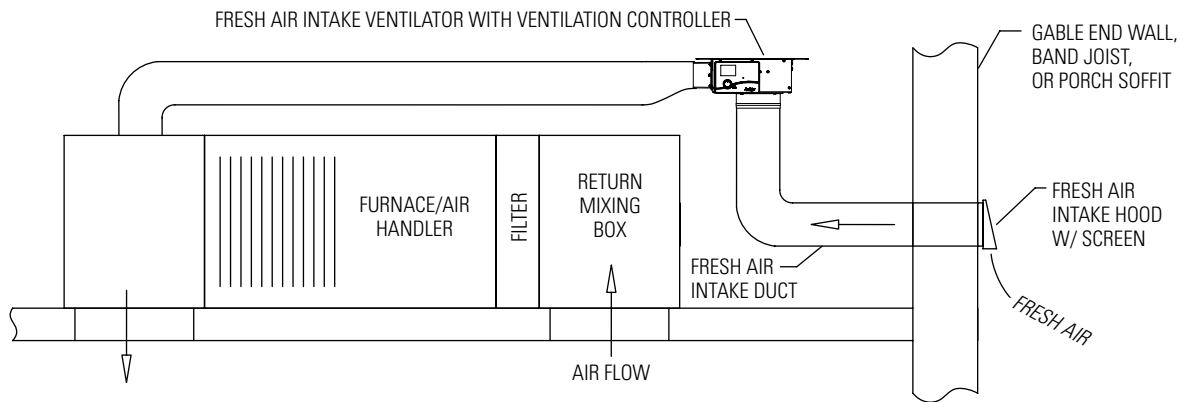
BENEFITS

- The precise amount of outside air needed in today's efficiently designed homes is delivered
- Optimize energy savings by locking out ventilation during hottest/coldest times of the day
- Improves indoor air quality
- Robust design handles hot attics
- Installation labor reduced, requires only a switched outlet and 24 volt wiring to HVAC system
- Furnace or air handler does not require an ECM motor

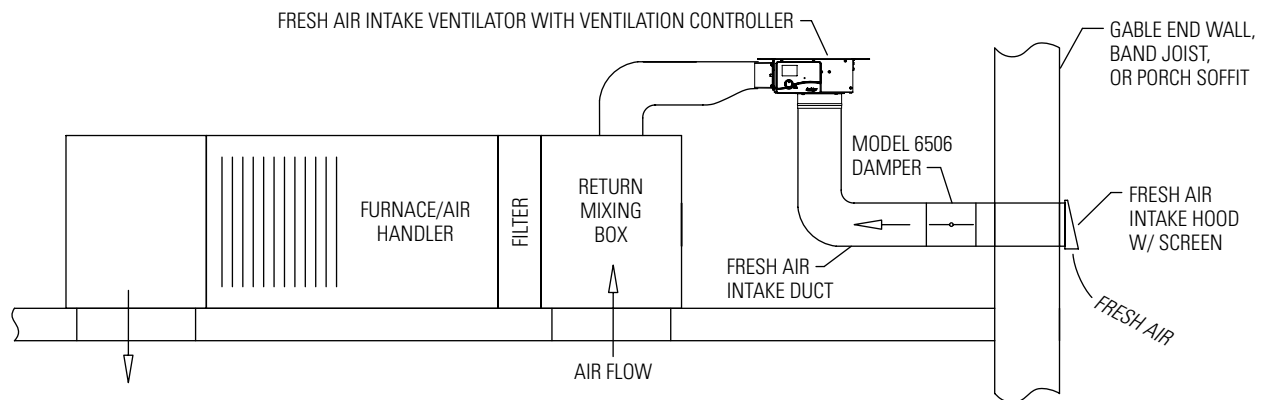
When properly installed and set, the Aprilaire Model 8140NF Fresh Air Intake Ventilator will meet the mechanical ventilation requirements of:

- Energy Star Certified Homes, Version 3
- EPA Indoor airPLUS, Version 1
- 2012 International Residential Code (IRC)
- 2012 International Energy Conservation Code (IECC)

Typical Attic Installation - Fresh Air Intake Ventilator Ducted to Supply Duct



Alternate Attic Installation - Fresh Air Intake Ventilator Ducted to Return Duct

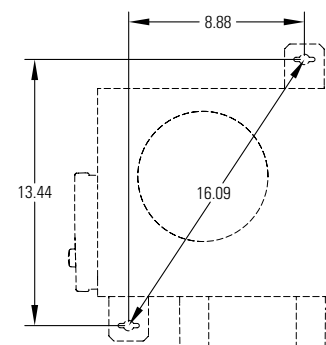


PERFORMANCE

External Static Pressure* ("w.c.)	Airflow (CFM)	Current (amps)	Power (watts)	Efficacy (CFM/watt)
0.0	240	.60	67	3.6
0.2	205	.60	67	3.1
0.4	170	.60	67	2.5
0.6	130	.59	66	2.0
0.8	95	.58	64	1.1
1.0	65	.56	62	1.1

* Measured across ventilator.

Mounting Bracket Dimensions (inches)



APRILAIRE RESERVES THE RIGHT TO CHANGE SPECIFICATIONS WITHOUT NOTICE.

PO Box 1467 • Madison, WI 53701-1467 • Phone 800/334-6011 • Fax 608/257-4357 • www.aprilairepartners.com