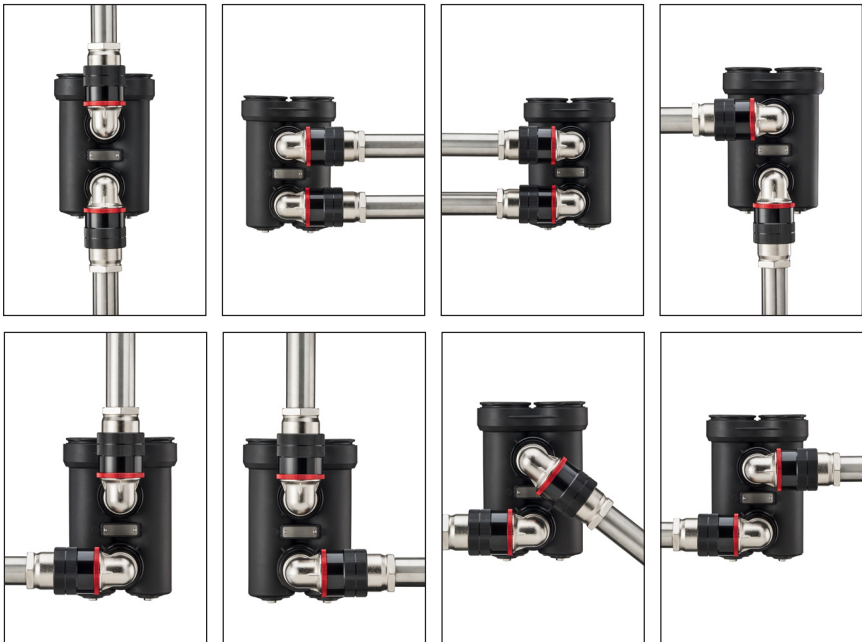


Multiple installation options

MagnaClean® DualXP's in-line design and 360° rotational connectors provide multiple installation options for both vertical and horizontal pipework. This ensures greater flexibility within tight working environments.



FOR BEST RESULTS
Install and service with MC1+ Protector, the advanced system inhibitor from ADEY, the industry leaders in heating system maintenance and water treatment.





MagnaClean®

Dual XP

Installation and servicing instructions

Maximum working pressure: 87 psi
Maximum working temperature: 203°F
Flow rate: Recommended rate for optimum capture up to 26 gallons per minute
Volume: 0.64 gallons (when telescopic connectors are retracted)
Connection: 1 ½" NPT Female

CAUTION:

-  MagnaClean filter contains a strong magnet. Keep away from all electrical devices, bank cards and other magnetic devices.
-  MagnaClean filter contains a strong magnet. Caution should be taken at all times when handling if you have a pacemaker fitted.
-  MagnaClean filter is a pressurized device. Always release pressure before servicing.
-  Unit may be hot in operation. Handle with care.



Toll free: 844 378 0442 | Office: 412 406 8292 | Email: info@adeyusa.com
adeyusa.com



M08619 LF2-01-02600



Installation

Exceptional protection for 1½" hydronic heating systems.

MagnaClean® DualXP has been developed by the industry leading and multi-award winning company that pioneered magnetic filtration within this sector. ADEY's filters are already protecting over three million heating systems throughout Europe.

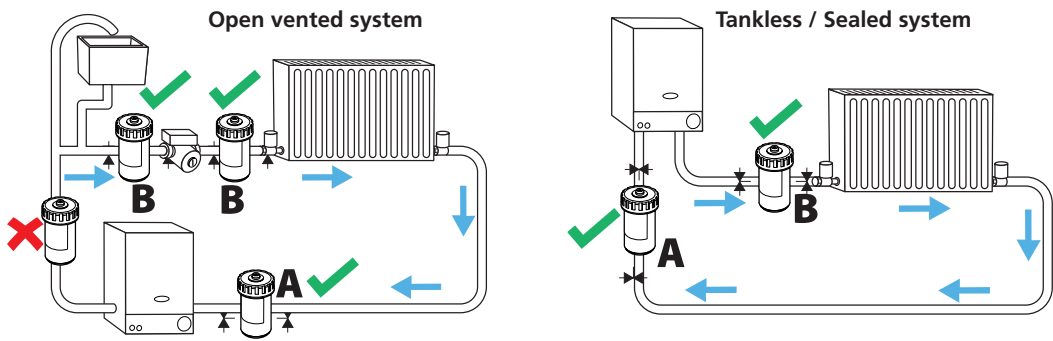
MagnaClean DualXP can be installed anywhere on the main circuit. However, to achieve the best level of protection for the boiler or baseboard, it is recommended to install the filter after the last radiator on the system and before the boiler. It is important to install valves either side of the *MagnaClean DualXP*.

Isolation valves, fittings for copper pipework and reducing bushes are not included.

The following instructions are designed to support engineers in the safe and effective installation and servicing of *MagnaClean DualXP* and should be followed at all times.

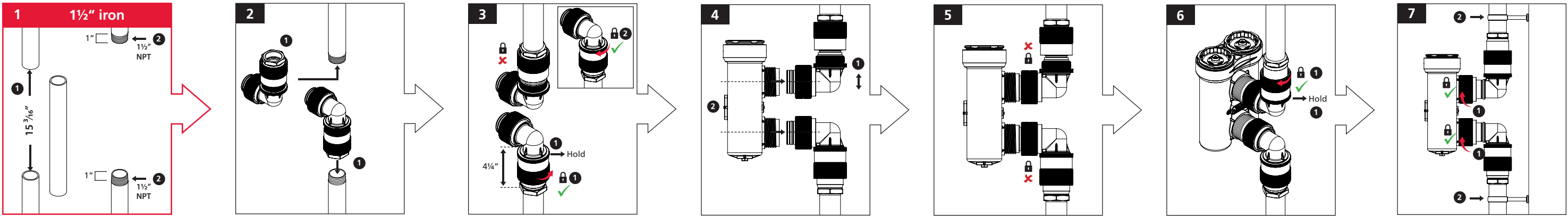
Any queries should be directed to ADEY on **844 378 0442**

MagnaClean DualXP is suitable for both residential hydronic heating systems shown here as well as larger light commercial systems.



In both diagrams, position **A** is best practice, while **B** is suitable.

Note: We firmly recommend *MagnaClean DualXP* is installed and serviced by a qualified heating engineer. Knurled nuts should be hand-tightened only.



Servicing

Your system is protected by

MagnaClean®

Dual XP

Annual service required

adeyusa.com

