



ACUDOR

PLATINUM



- RETROFIT DRAINS WITH SEAL
- NEW CONSTRUCTION DRAINS
- FIXED DRAIN DOME
- DRAIN SEALS
- VENT STACKS
- TALL CONES
- ELECTRICAL FLASHINGS



ACUDOR PLATINUM PRODUCT LINE

All ACUDOR Platinum Retrofit and New Construction Drains are certified to conform to both CSA-B79 and ASME 112.6.4 standards. These rigorous tests ensure that our products have met the highest possible standards. Our ISO-9001 manufacturing plant is proud to have earned this certification and our product quality is assured with ongoing tests and audits.

ALUMINUM RETROFIT DRAINS WITH SEAL *Recessed Deck*

2 3/4" Aluminum Retro, w/dome, w/seal w/flip top dome	ARDR02
3 3/4" Aluminum Retro, w/dome, w/seal w/flip top dome	ARDR03
5 3/4" Aluminum Retro, w/dome, w/seal with flip top dome	ARDR05

ALUMINUM RETROFIT DRAINS WITH SEAL *Flat Deck*

2 3/4" Aluminum Retrofit, Flat Deck, w/dome, w/seal with flip top dome	ARDF02
3 3/4" Aluminum Retrofit, Flat Deck, w/dome, w/seal w/flip top dome	ARDF03
5 3/4" Aluminum Retrofit, Flat Deck, w/dome, w/seal w/flip top dome	ARDF05

ALUMINUM NEW CONSTRUCTION DRAINS *Recessed Deck*

3" Aluminum New Construction Recessed deck drain w/alum clamping ring and flip top dome	ARDR03N
4" Aluminum New Construction Recessed deck drain w/alum clamping ring and flip top dome	ARDR04N
6" Aluminum New Construction Recessed deck drain w/alum clamping ring and flip top dome	ARDR06N

ALUMINUM NEW CONSTRUCTION DRAINS *Flat Deck*

3" Aluminum New Construction Flat deck drain w/alum clamping ring and cast dome	ARDF03N
4" Aluminum New Construction Flat deck drain w/alum clamping ring and cast dome	ARDF04N
6" Aluminum New Construction Flat deck drain w/alum clamping ring and cast dome	ARDF06N

ALUMINUM FIXED DRAIN DOME

Premium Cast Aluminum Vandal Proof Flip Top Dome	RDDOME
--	--------

Ballast Guards - Stainless Steel Adjustable 10" to 12.5"	BGUARD
--	--------

Platinum Control Flow Restrictor 5.70" I.D.	FLOWCONTROL
---	-------------

3" Aluminum Under Deck Clamp
4" Aluminum Under Deck Clamp
6" Aluminum Under Deck Clamp

Gas Line Marker
Drain Dome Marker

DRAIN SEALS

3" Seal
4" Seal
6" Seal

VENT STACKS

VS/VPS base only 4.88" I.D.
3" Cap Only
4" Cap Only

4" One-way Insulated Breather

TALL CONES

TCON 4"
TCON 6"
TCON 8"

4" Galvanized Steel Rain Collar
6" Galvanized Steel Rain Collar
8" Galvanized Steel Rain Collar

ELECTRICAL FLASHING

Four Nipple Electrical Flashing w/EPDM Top

PRODUCT ID

UDCLAMP03
UDCLAMP04
UDCLAMP06

GLMARKER
DRMARKER

PRODUCT ID

DS03
DS04
DS06

PRODUCT ID

VSCBASE
VSCAP03
VSCAP04

INSULB

PRODUCT ID

TCONE04
TCONE06
TCONE08

RC04
RC06
RC08

PRODUCT ID

EFLASH4N



PLATINUM ALL ALUMINUM RETROFIT DRAIN

features

DOMES

- ✓ Foundry cast heavy duty flip top aluminum dome
- ✓ Dome top designed for contractors label
- ✓ 33 weir slots for maximum water flow
- ✓ Fits all sizes of Platinum copper drains
- ✓ 3 bolt design for efficient installation
- ✓ Vandal resistant yet contractor friendly

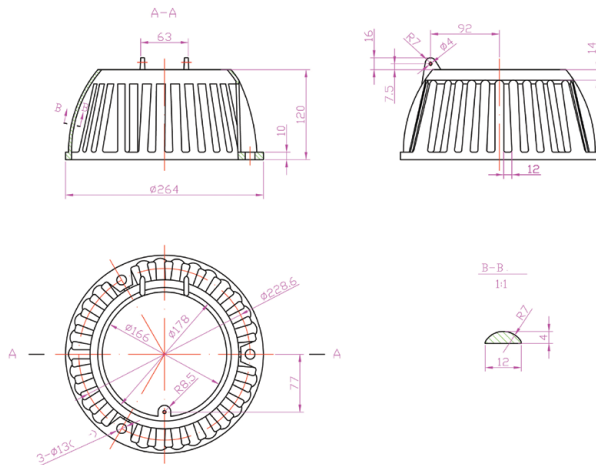
FLANGE / CLAMPING RING

- ✓ Heavy cast aluminum construction
- ✓ 9 drainage channels to allow full drainage
- ✓ Flange designed for optimum seal with roof flashing
- ✓ Fits all sizes of Platinum copper drains
- ✓ Reversible to allow elevation drainage options

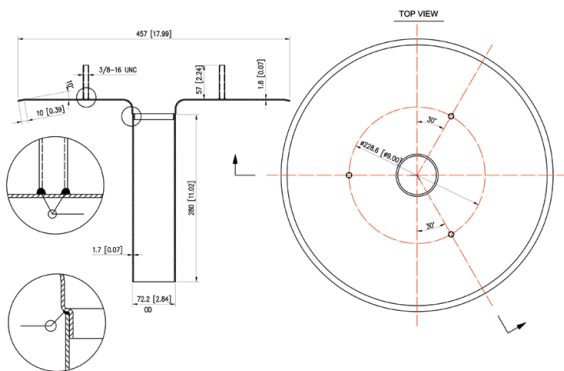
DRAIN DECK and STEM

- ✓ Deck of 1.8 mm Alum 1060 grade premium aluminum
- ✓ Stem of 1.7 mm Alum 1063 T-5 grade premium aluminum
- ✓ Available in Flat deck sizes 1 3/4", 2 3/4", 3 3/4", 5 3/4" and in Recessed deck sizes 2 3/4", 3 3/4" and 5 3/4"
- ✓ Aluminum welded and overlapping seams for clean solid weld fusion
- ✓ Aluminum Argon Arc welded bolts and stem to deck **Platinum Exclusive For Added Strength**
- ✓ 3/8" aluminum T6-6061 bolts to aluminum deck
- ✓ Extra set of stainless steel nuts (6)
- ✓ Code approved CSA-B79
- ✓ Available in Retrofit sizes 2 3/4", 3 3/4" and 5 3/4"

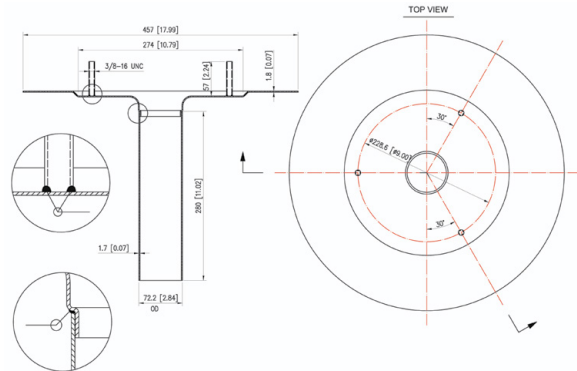
Aluminum Flip Top Dome



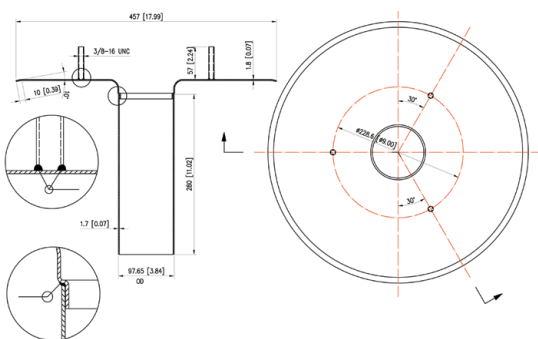
2 3/4" Aluminum Flat Deck Drain



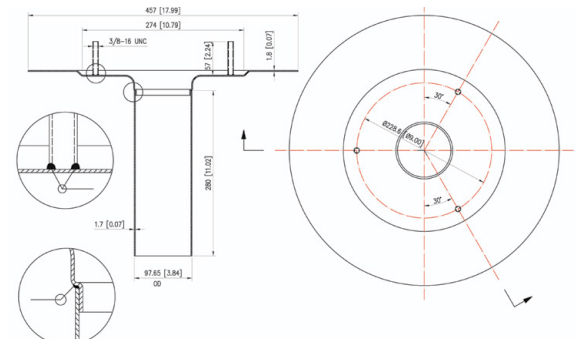
2 3/4" Aluminum Recessed Deck Drain



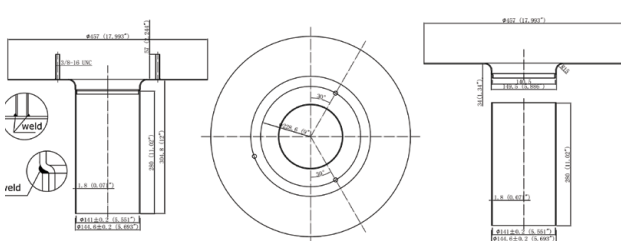
3 3/4" Aluminum Flat Deck Drain



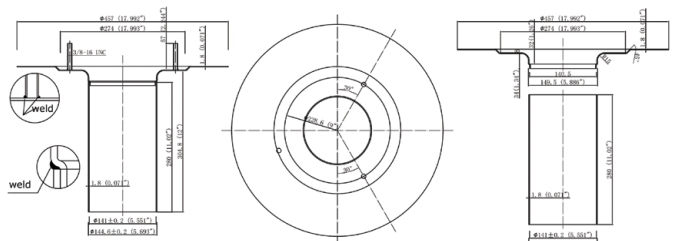
3 3/4" Aluminum Recessed Deck Drain



5 3/4" Aluminum Flat Deck Drain



5 3/4" Aluminum Recessed Deck Drain





NEW CONSTRUCTION ALUMINUM DRAIN

features

DOMES

- ✓ Foundry cast heavy duty aluminum dome
- ✓ Platinum Flip Top Dome
- ✓ 33 weir slots for maximum water flow on both styles
- ✓ 3 bolt design for efficient installation
- ✓ Vandal resistant and contractor friendly

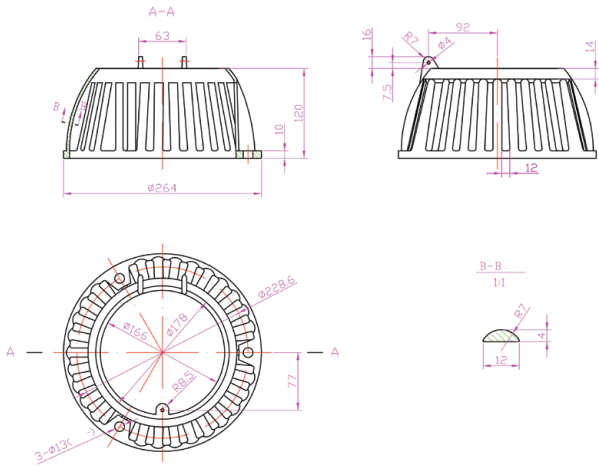
FLANGE / CLAMPING RING

- ✓ Heavy cast aluminum construction
- ✓ 9 drainage channels for full drainage
- ✓ Flange designed for optimum seal with roof flashing
- ✓ Reversible to allow for elevation drainage options

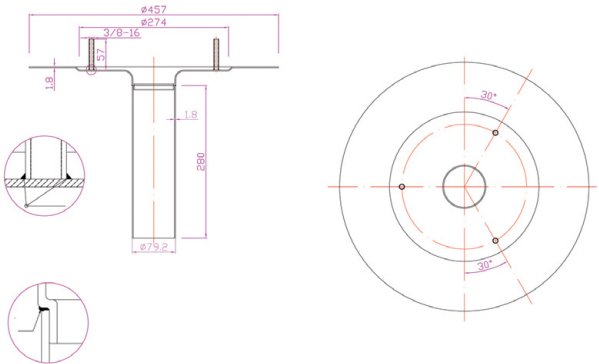
DRAIN DECK and STEM

- ✓ 1.8 mm thickness, 6063 T-5 grade premium aluminum for stem and 1060 pure alum for deck
- ✓ Aluminum welded stem to deck with overlapping seams for superior strength **Platinum Exclusive**
- ✓ Aluminum Argon Arc welded bolts to deck for solid weld fusion
- ✓ 3/8" T-6, 6061 grade aluminum bolts with (6) stainless steel nuts
- ✓ Code approved CSA-B79
- ✓ Available in New Construction sizes 3", 4" and 6" in Flat Deck and in sizes 3", 4" and 6" in Recessed Deck
- ✓ Flat Deck has 8 degree bevelled edge for better adhesion and added strength

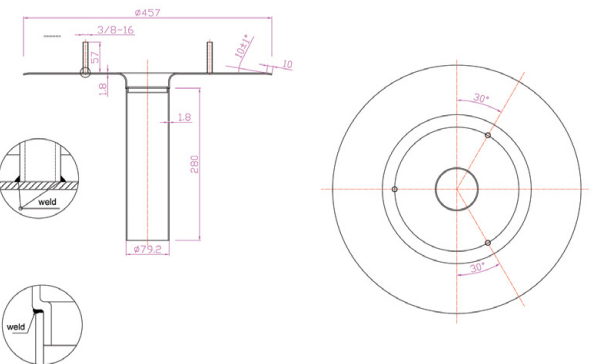
Aluminum Flip Top Dome



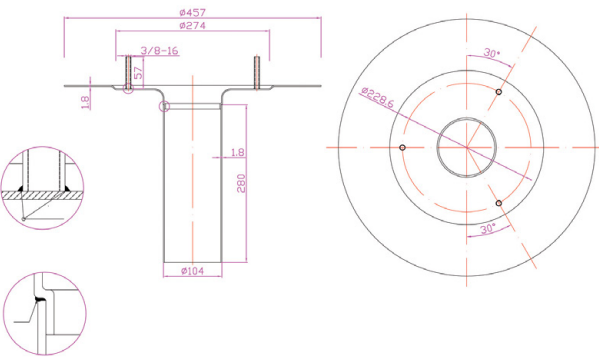
3" Aluminum New Construction Recessed Deck Drain



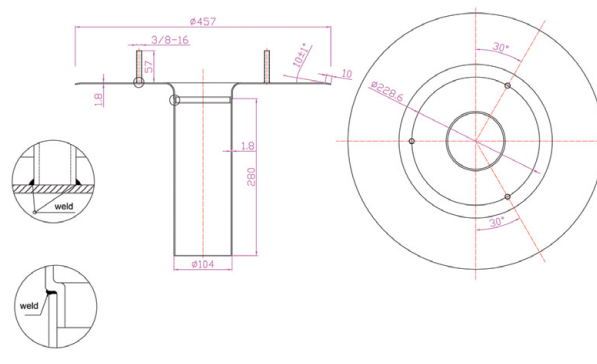
3" Aluminum New Construction Flat Deck Drain



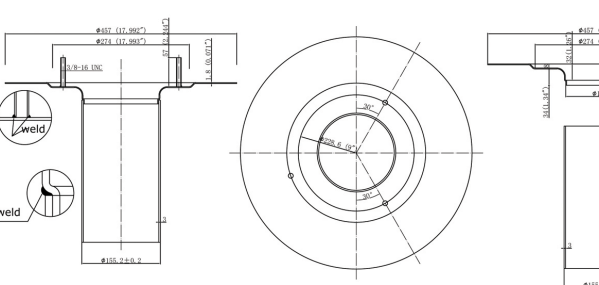
4" Aluminum New Construction Recessed Deck Drain



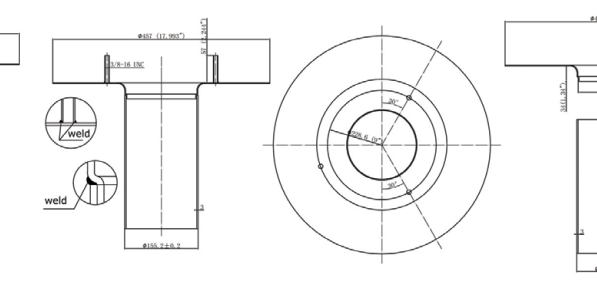
4" Aluminum New Construction Flat Deck Drain



6" Aluminum New Construction Recessed Deck Drain



6" Aluminum New Construction Flat Deck Drain



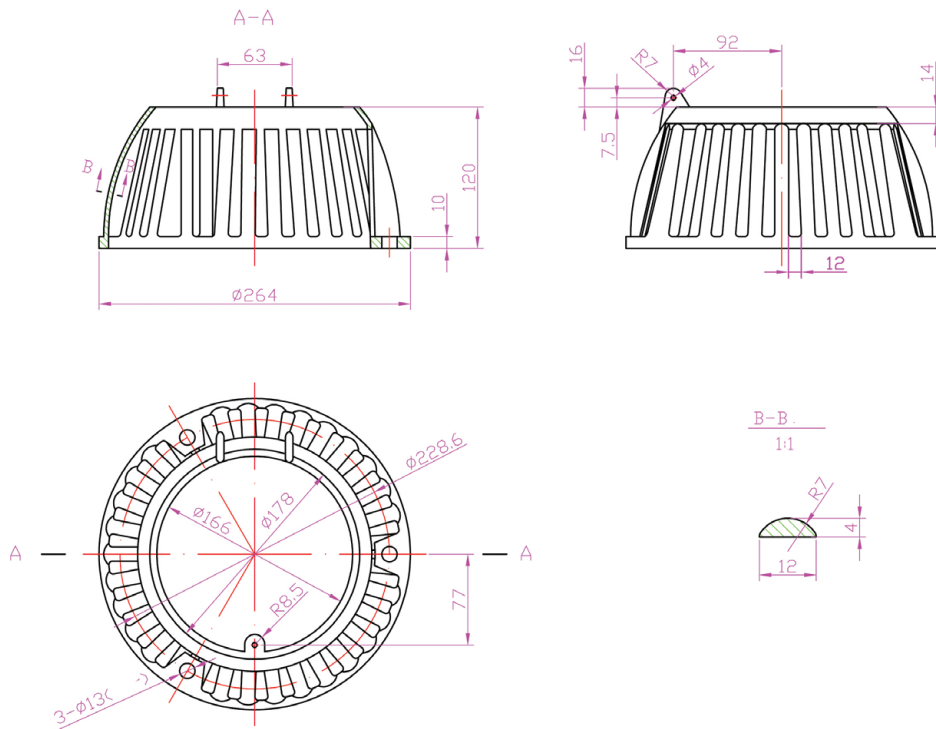


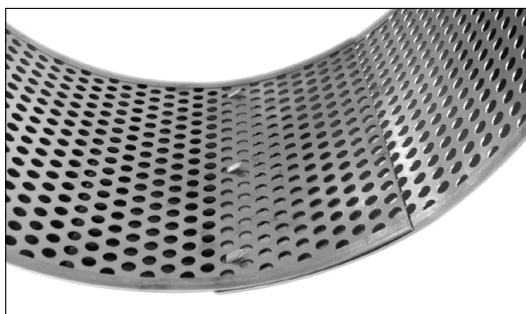
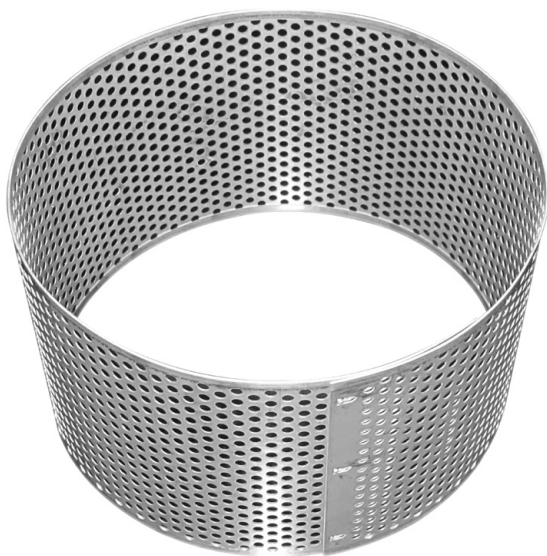
CAST ALUMINUM FLIP TOP DOME

features

- ✓ Two piece secured hinged HD cast aluminum Vandal Proof dome
- ✓ Easy maintenance with single Phillips stainless steel screw
- ✓ Top fully opens with 6 ½" opening
- ✓ 3 bolt design allows ease of installation
- ✓ Platinum flip top dome fits all sizes of Platinum retrofit and new construction size copper and aluminum drains
- ✓ Designed to accommodate contractor metal foil adhesive label
- ✓ 33 weir openings for effective drainage
- ✓ Available and boxed as 'dome only' in boxes of 5
- ✓ Platinum Flow Control can also be used as needed
- ✓ Flip top dome series copper drains are SKU designated beginning with P (Premium)
- ✓ Standard dome on all P series copper drains
- ✓ Code approved CSA-B79

Cast Aluminum Flip Top Dome

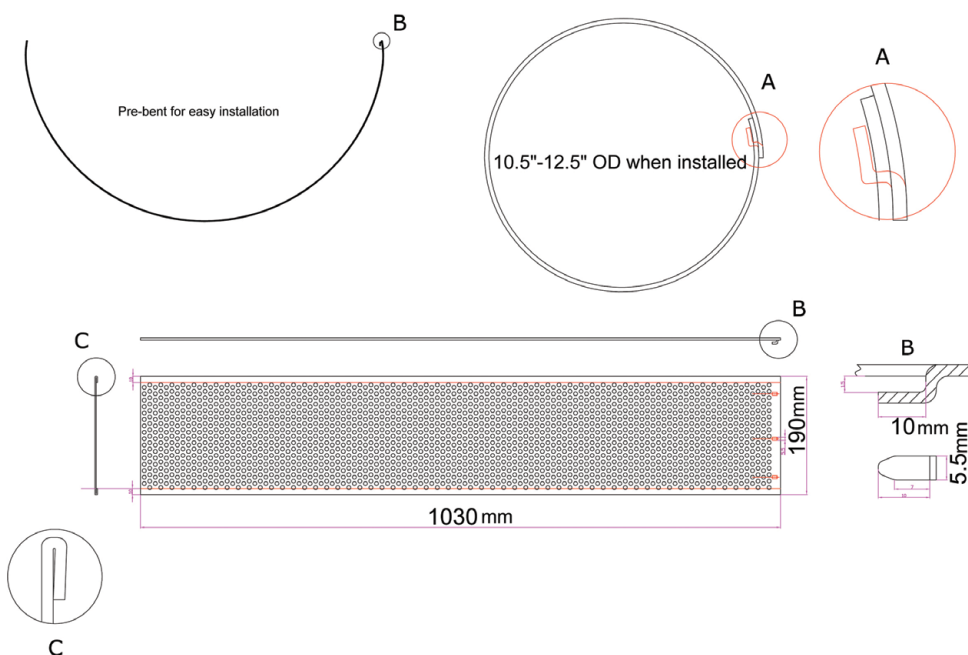




PLATINUM BALLAST GUARD

features

- ✓ Manufactured from premium 304 Grade, 22 gauge stainless steel
- ✓ Folded edges top and bottom for safe handling and installation
- ✓ Platinum engineered unique clip-secure design allows flexible size adjustment
- ✓ Fits dome diameter from 10.5" up to 12.5" perfectly
- ✓ Far easier to transport and store conveniently with 10 pieces per box
- ✓ 3 integral clips connect easily and securely for fast installation
- ✓ Machine drilled 1/4" holes representing 28% of total surface area for excellent drainage on inverted roofs
- ✓ Folded top and bottom edges will not cut or wear membranes





Platinum Flow Control drain insert will perform as a drain restrictor with the following performance: Fits all sizes of Platinum copper and aluminum drains (not economy drains)

Under a 4-in. head of water. 40 GPM

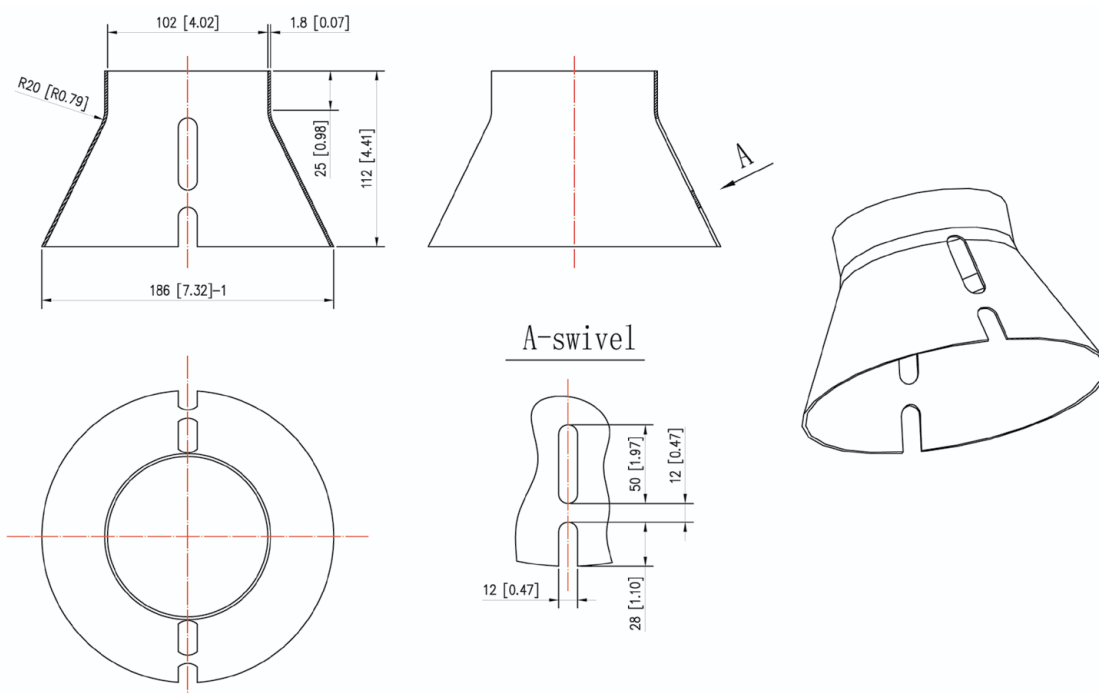
Under a 3-in. head of water. 30 GPM

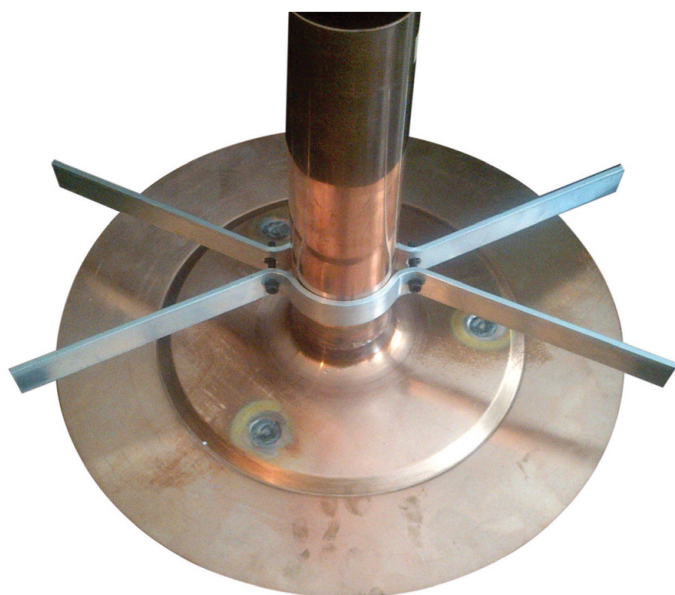
Under a 2-in. head of water. 20 GPM

Under a 1-in. head of water. 10 GPM

FLOW CONTROL *features*

- ✓ Platinum Flow Controls are used to control roof water drainage, if necessary, when storm water flow rates are restricted by municipal regulation
- ✓ Platinum Flow Controls are made of .07" heavy duty spun aluminum
- ✓ Drainage flutes are located on both sides and a 4" diameter top opening when head of water exceeds 4.41" flow control height
- ✓ Side drainage flutes designed to restrict water flow and comply to municipal regulations
- ✓ Simple and easy to install
- ✓ Fits all styles and sizes of Platinum Copper and Aluminum drains



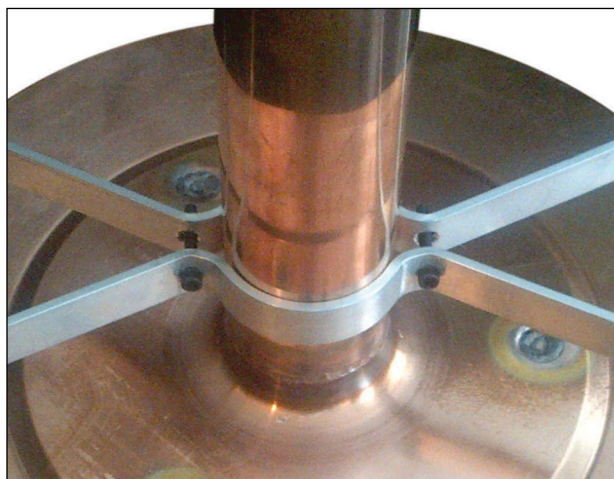


UNDER DECK CLAMP

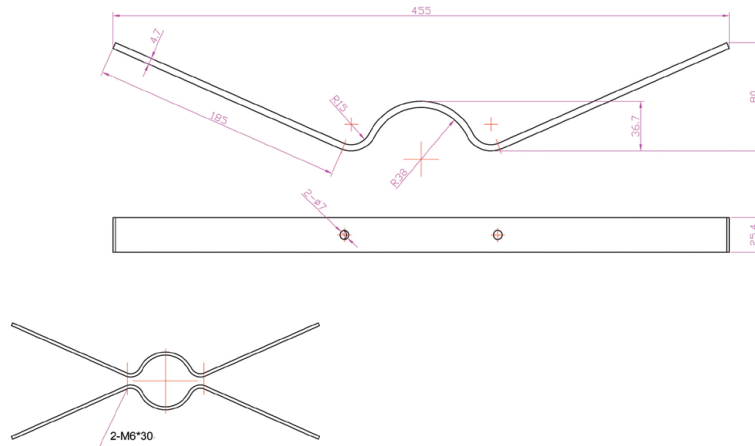
features

- ✓ Constructed of premium heavy gauge aluminum 1" wide x 18" long x 4.7mm thick
- ✓ Designed for either 3", 4" or 6" New Construction drains
- ✓ Tested to withstand over 300 lb. pull test
- ✓ Complete with set of 2 Allen key bolts and nuts
- ✓ Strong, easy to install and fits all Platinum drains and most others

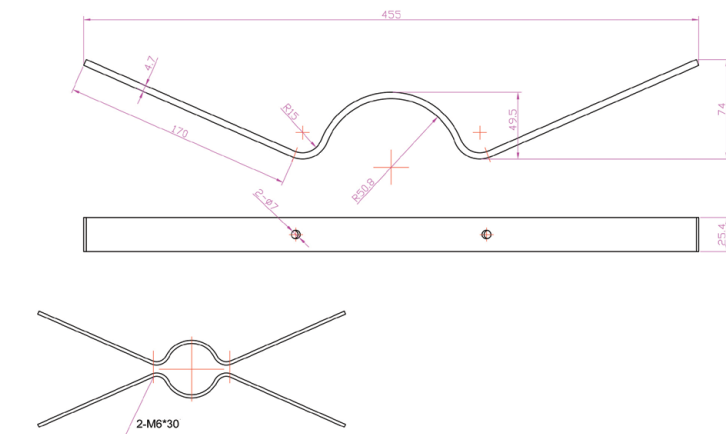
Under-deck clamps are recommended to provide a secure, long lasting installation of the roof drain on all but poured-in-place installations. Roof drains must be firmly secured to the roof with an under-deck clamp, otherwise, due to snow loads, rain loads and regular expansion and contraction, the drain will work in and out of the roofing, causing roofing membranes to flex and fail.



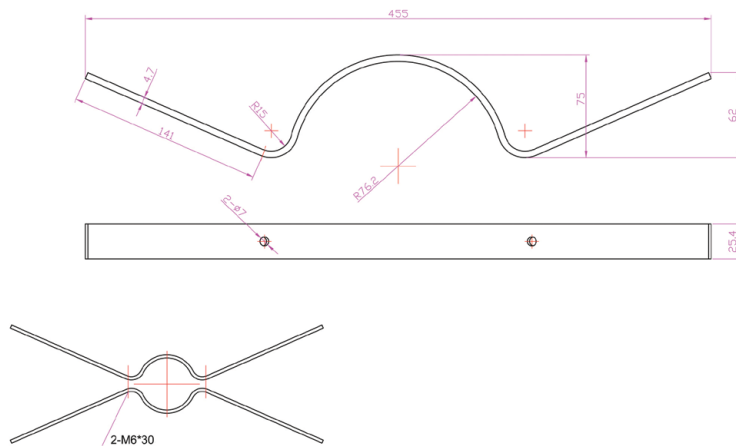
3" Under Deck Clamp



4" Under Deck Clamp



6" Under Deck Clamp





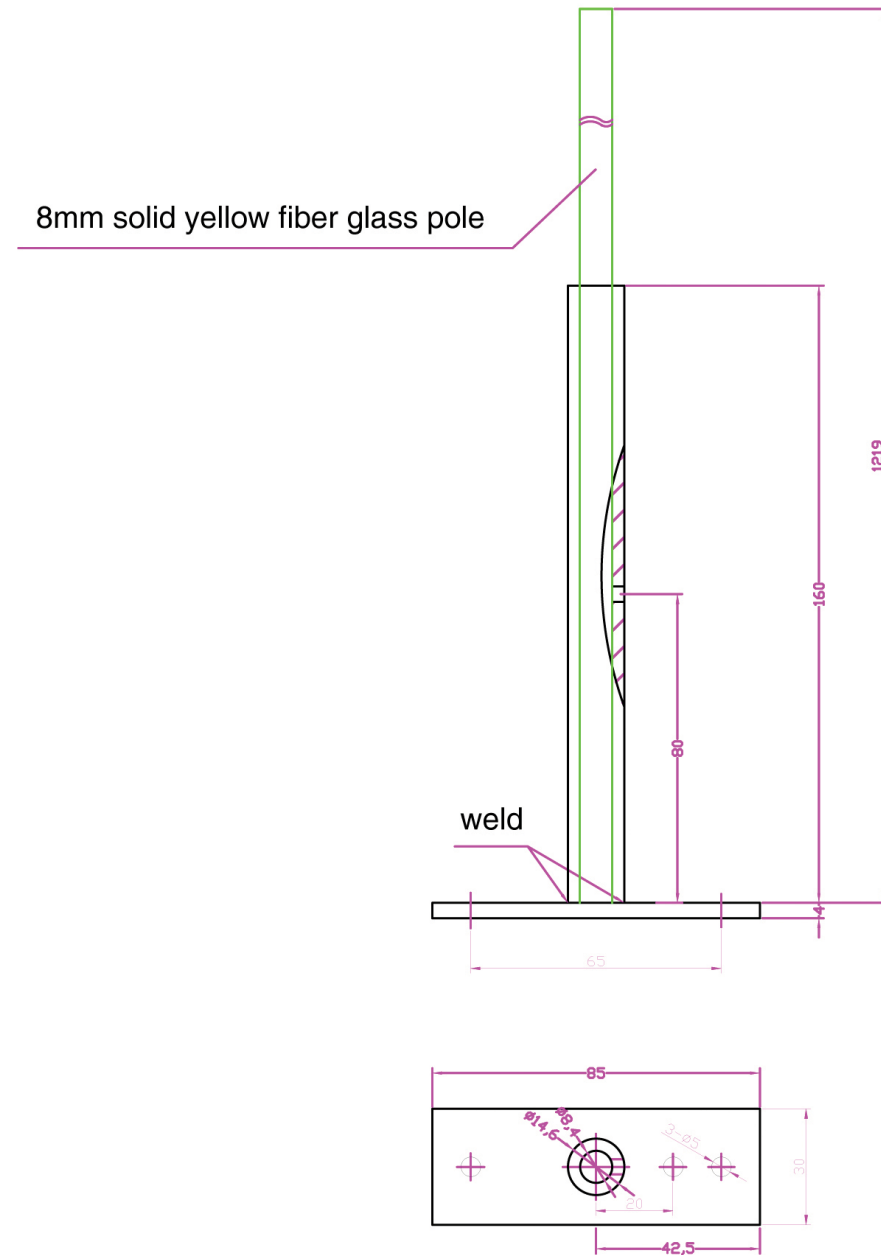
GAS LINE MARKER

features

- ✓ Highly visible 4' fiberglass flexible pole
- ✓ Cast aluminum base secures solidly to gas line support base
- ✓ Fiberglass pole is safety yellow to match gas lines
- ✓ Ensures safety and visibility with drifted snow and snow removal
- ✓ Strong but flexible pole will not break



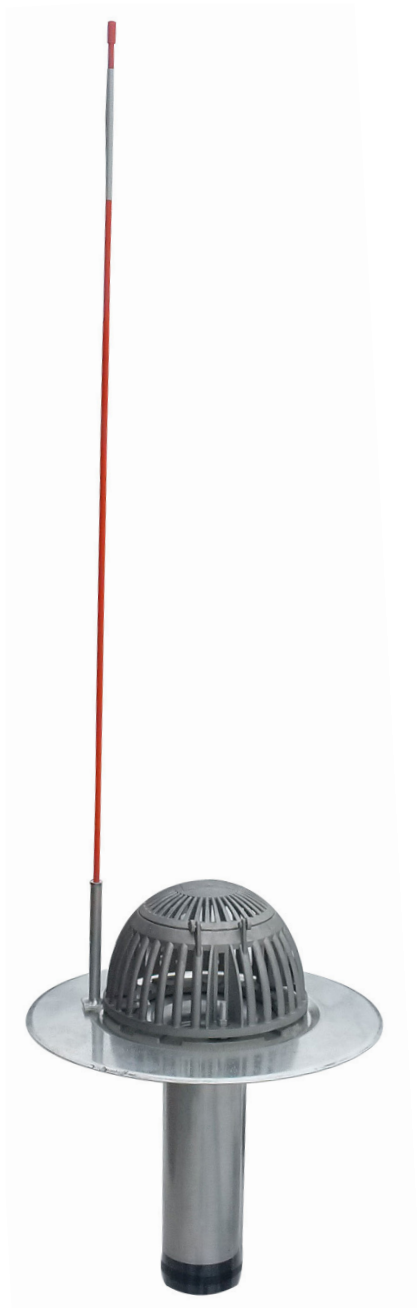
Gas Line Marker



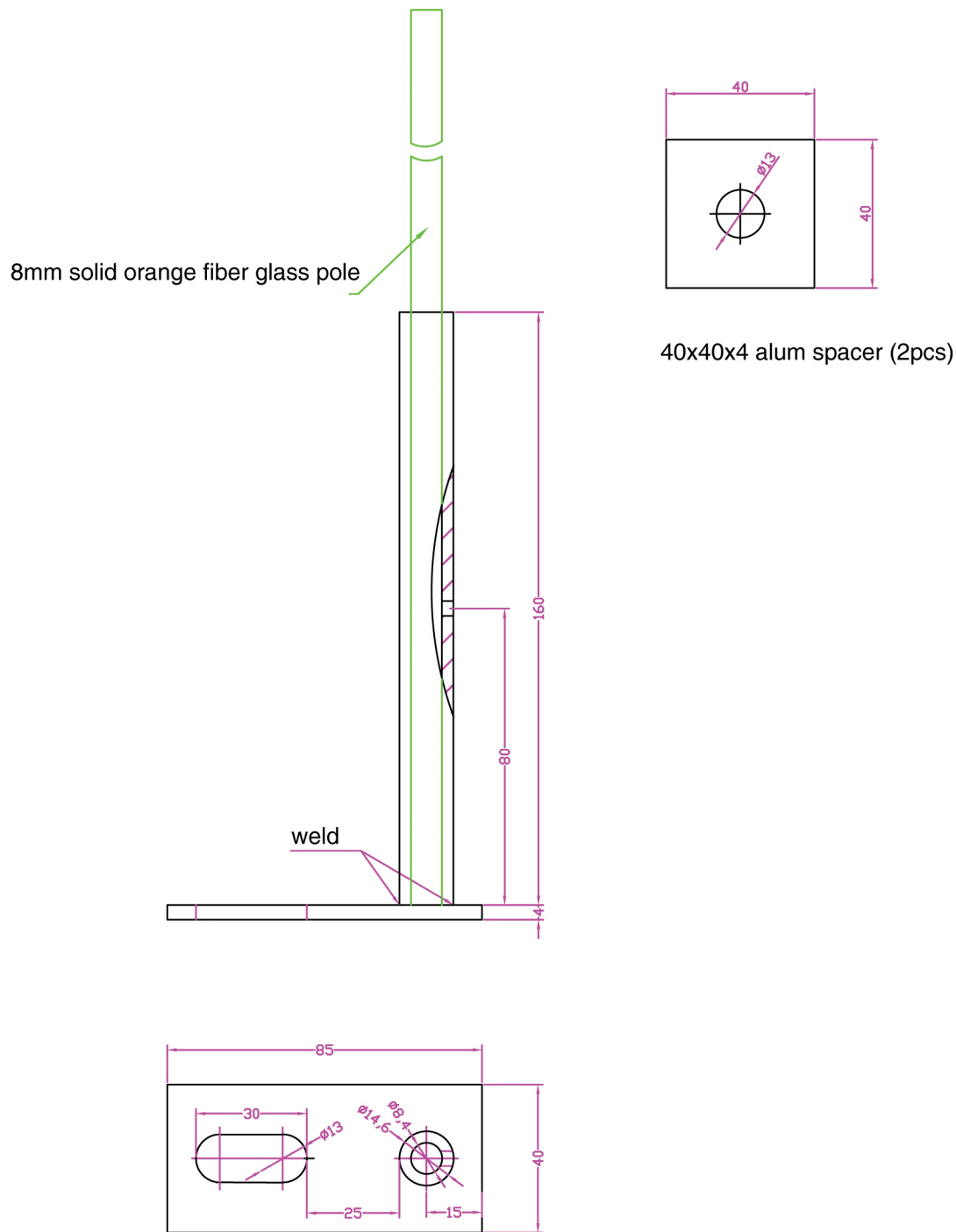
DRAIN DOME MARKER

features

- ✓ Highly visible 4' fiberglass flexible pole
- ✓ Cast aluminum bracket secures solidly to most roof drain bolts with spacers
- ✓ Fiberglass pole is safety orange to ensure high visibility
- ✓ Ensures safety, visibility and ease of maintenance with drifted snow
- ✓ Strong but flexible pole will not break
- ✓ Makes drain maintenance easier and faster in winter conditions
- ✓ Simplified maintenance helps extend roof life



Drain Dome Marker

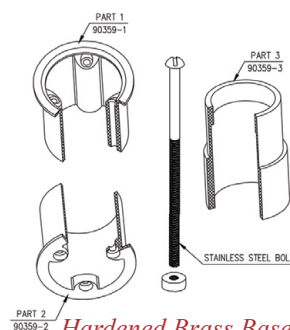
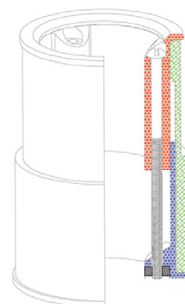




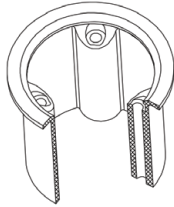
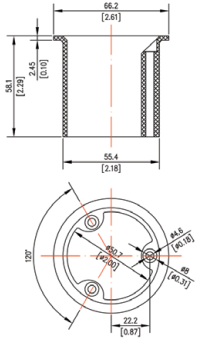
PLATINUM DRAIN SEAL

features

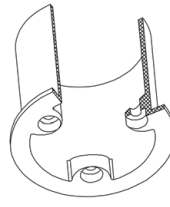
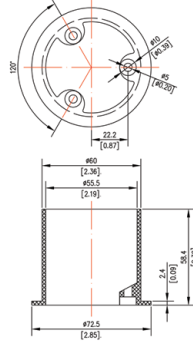
- ✓ Platinum Drain Seals are manufactured with durable nylon and EPDM rubber and can be compressed to form a secure seal between roof drain stems and existing plumbing drains
- ✓ The flexible rubber is expanded by tightening internal stainless steel screws thereby stopping water leakage at the connection in the event of water backup in the drain
- ✓ Available in sizes 3", 4", and 6"
- ✓ Manufactured with highest quality materials and exact tolerances
- ✓ Easy to install and a watertight connection
- ✓ 3 independent stainless steel bolts prevent "spinning" seal during installation
- ✓ Hardened brass base prevent stripping
- ✓ 1 3/4" to 2" Coupling with stainless steel MJ Clamps for secure retrofit connection



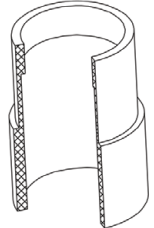
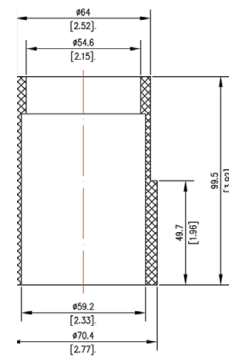
3" SEAL - Part 1



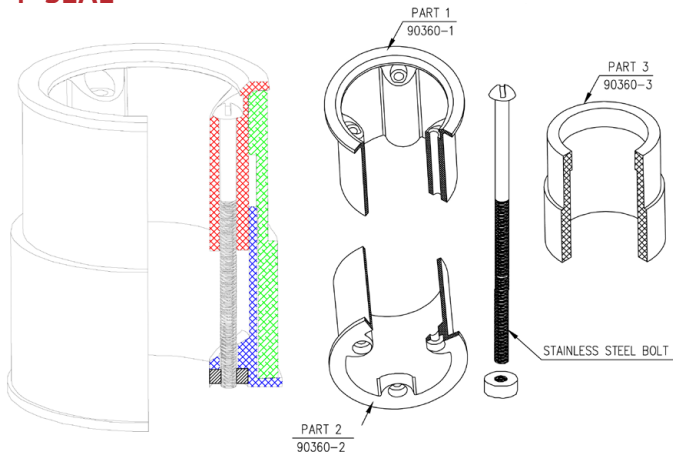
3" SEAL - Part 2



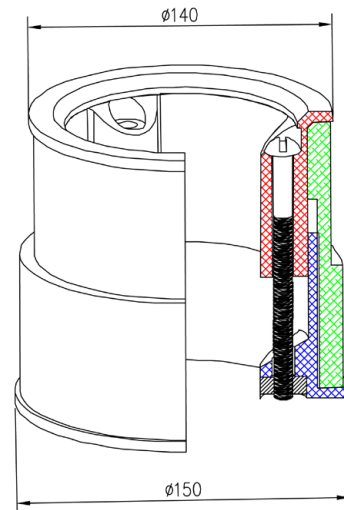
3" SEAL - Part 3



4" SEAL



6" SEAL





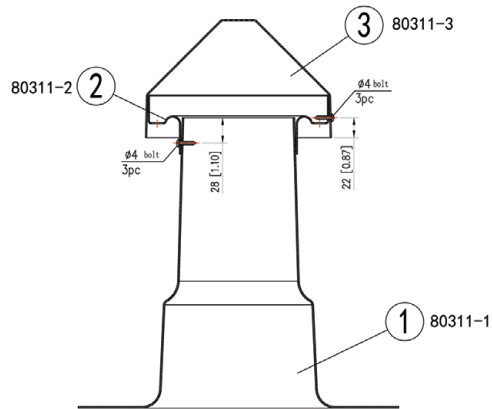
PLATINUM VENT STACK

With 3" or 4" Aluminum or Vandal Proof Cap
features

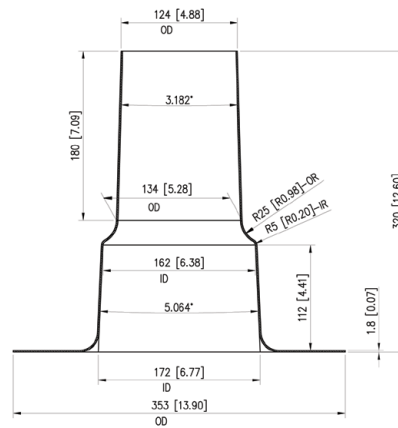
- ✓ Tested and certified by QAI Labs for CSA B-272
- ✓ Seamless spun aluminum
- ✓ 12.6" tall without cap
- ✓ Stack top opening 4.88"
- ✓ Available with either 3" or 4" VS Cap or Vandal Proof Cap
- ✓ Caps are spun aluminum and attached to vent stack (screwed)
- ✓ Vent Stack flashing to be used on vent pipes such as Soil Stacks or Sanitary pipes
- ✓ Heavier grade quality aluminum than the other brands
- ✓ All Platinum aluminum products are spun using soap as a lubricant and then washed
- ✓ No oil residue as with others



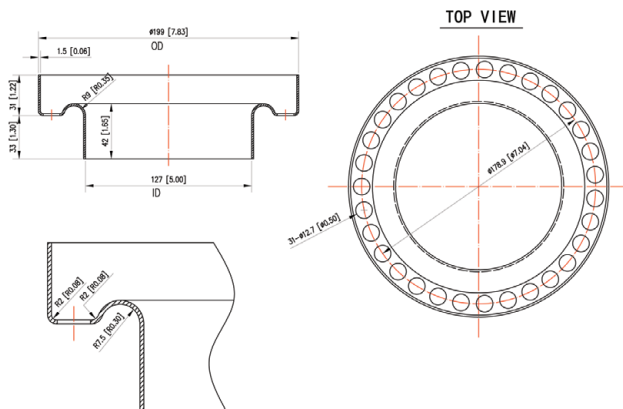
Vent Stack with Vandal Proof Cap



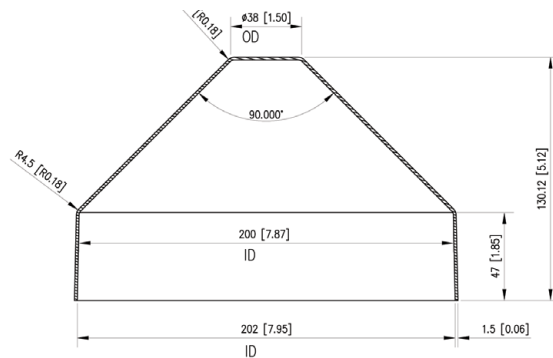
Vent Base



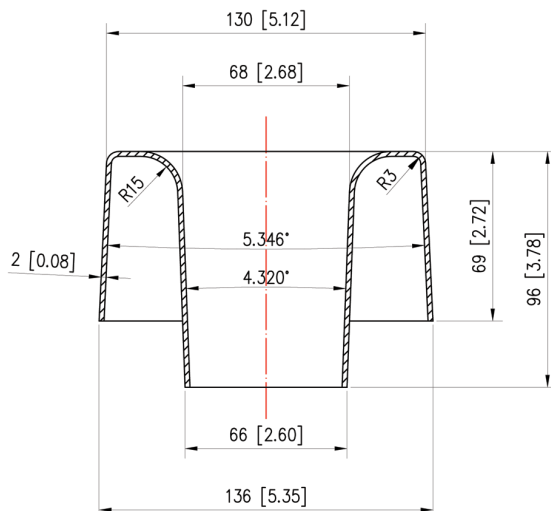
Vent Collar



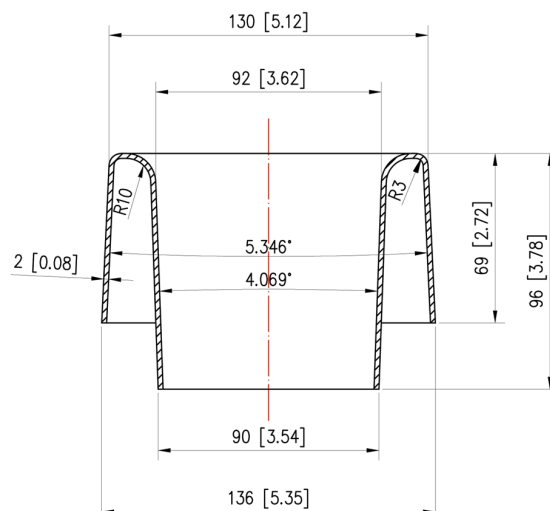
Vandal Proof Cap



3" Vent Stack Cap



4" Vent Stack Cap





ACUDOR PLATINUM

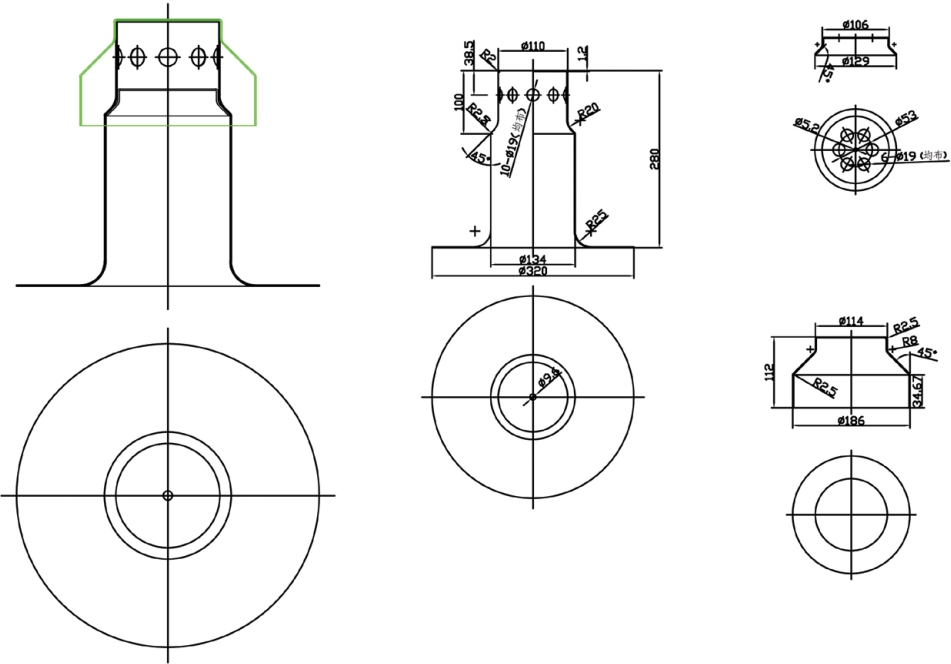


INSULATED ONE-WAY BREATHER

features

- ✓ 11" high with 12.5" wide deck flange
- ✓ 5" I.D. to aluminum wall with .8" insulation thickness
- ✓ 3.5" I.D. between insulated walls
- ✓ Vented 7" wide cap with integral bug screen
- ✓ Made from premium gauge spun aluminum
- ✓ Secured vandal proof cap prevents rain or snow entry
- ✓ Reduces moisture and trapper air within roofing system to prolong roof life
- ✓ 3/4" thickness polyurethane foam insulated walls
- ✓ One-way roof vent with an internal flexible one-way diaphragm
- ✓ Placement depends on the venting area of the breather. With a 3.5" (89 mm) throat opening it is recommended that one breather be installed every 1,000 square feet (929 square metres) of roof area

Insulated One-Way Breather





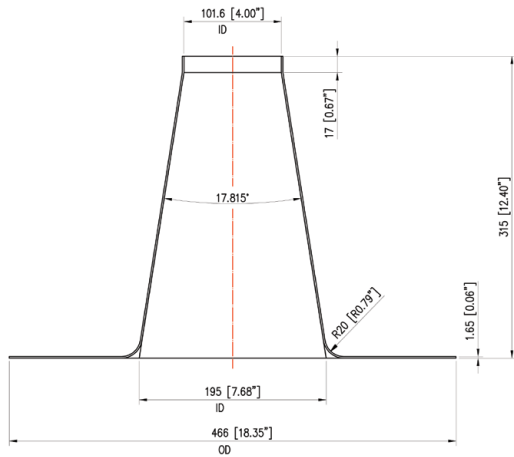
PLATINUM TALL CONES

features

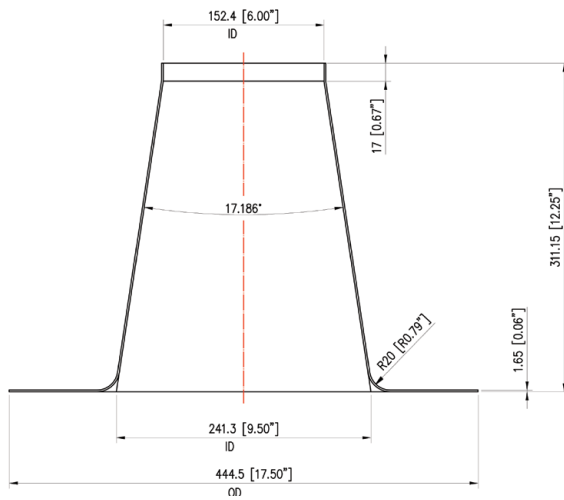
- ✓ Spun aluminum cones without welded seams
- ✓ Available in sizes 4", 6" in .06mm material thickness
- ✓ Available in sizes, 8" in .08mm material thickness
- ✓ Accommodates standard tall cone collars
- ✓ High quality and heavier gauge aluminum than most other brands
- ✓ Made from premium grade 1060 aluminum
- ✓ Simple and easy to install
- ✓ All tall cone sizes have 4" bottom flange



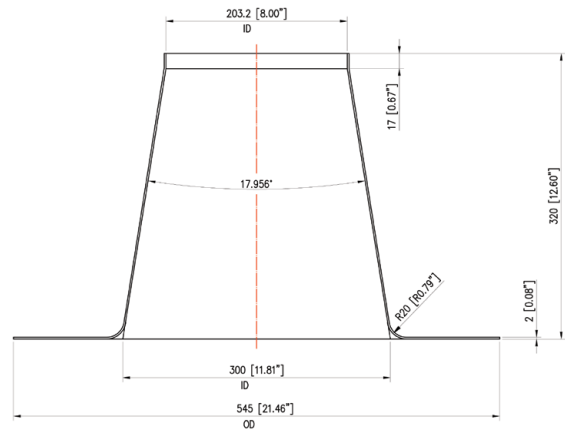
4" Cone



6" Cone



8" Cone



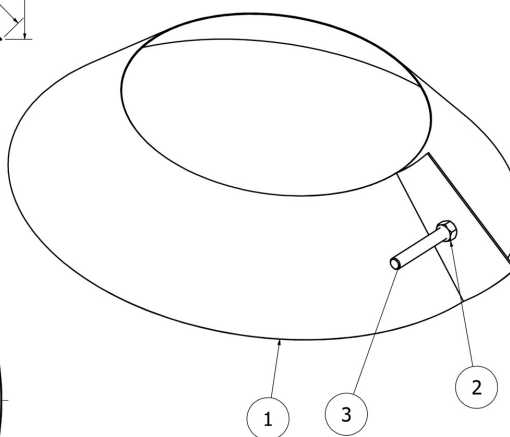
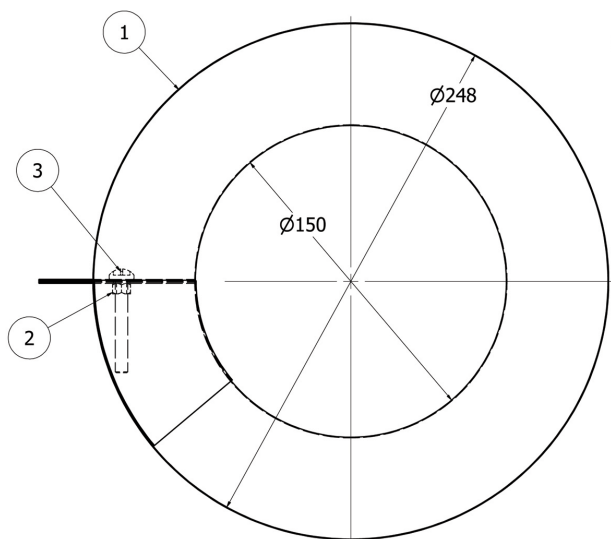
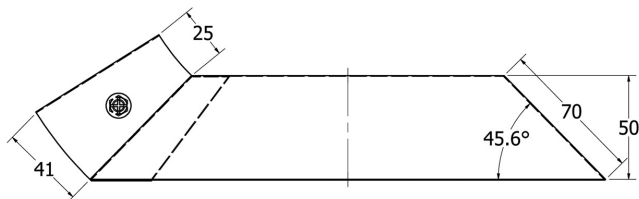


GALVANIZED STEEL RAIN COLLARS

features

- ✓ An economical rain collar made from 25 gauge galvanized metal (26 gauge for 2")
- ✓ 2" of overlap to allow for adjustment flexibility for various pipe sizes
- ✓ Available in sizes 4", 6", 8"
- ✓ Overlapping inner plate allows for adjustment up to +1" for larger pipe diameters
- ✓ One M6 x 45 galvanized steel bolt with nut
- ✓ Provides for silicon seal at upper edge where collar is tightened to pipe

Galvanized Steel Rain Collar



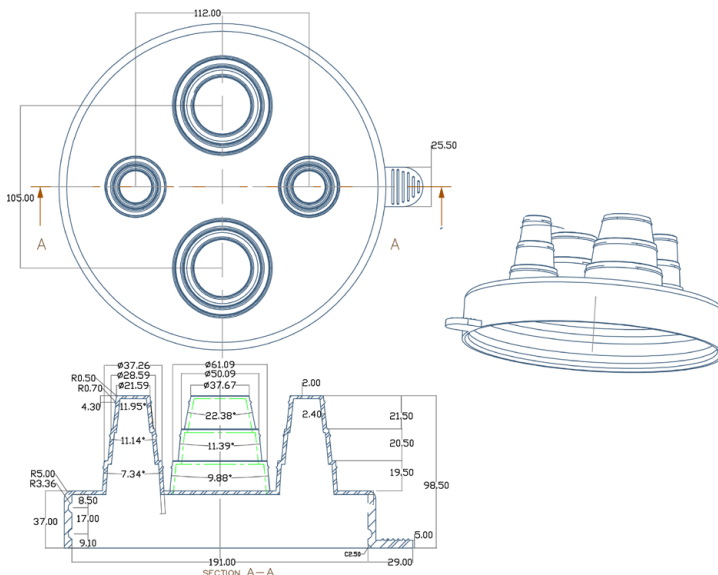


FOUR NIPPLE ELECTRICAL FLASHING

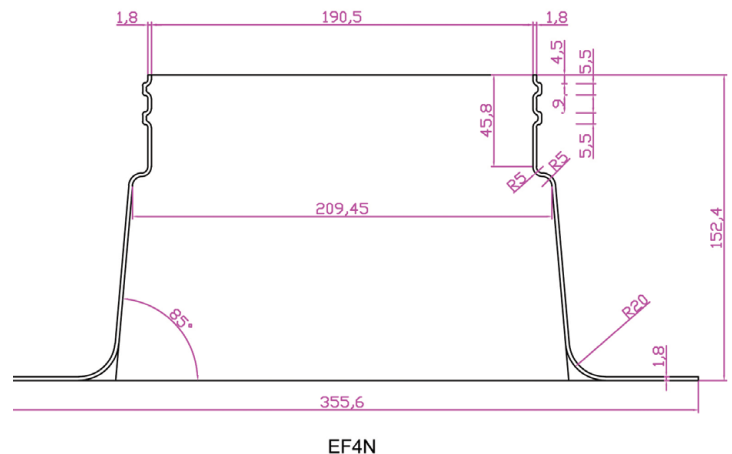
features

- ✓ EPDM and TVP boot designed for 4 separate wiring locations, each with their own variable diameter cut-out
- ✓ EPDM and TVP provide excellent flex fatigue resistance and ozone resistance
- ✓ 4 MJ clamps supplied to secure and seal openings around wiring as needed
- ✓ 2 large diameter 2 1/2" openings and 2 smaller 1 1/2" openings
- ✓ EPDM boot top over a seamless spun aluminum base with double groove for secure fit
- ✓ Seamless spun aluminum base is 6" high and 14" in diameter
- ✓ Total height with EPDM boot is 9" in height
- ✓ Ideal for multiple wiring applications on low slope roof
- ✓ Spun alum base EF4NW with 4" flange

EPDM Boot



Seamless Spun Aluminum Base





80 Little Falls Road. Fairfield, NJ 07004

Phone: (973) 575-5120

www.acudorplatinum.com