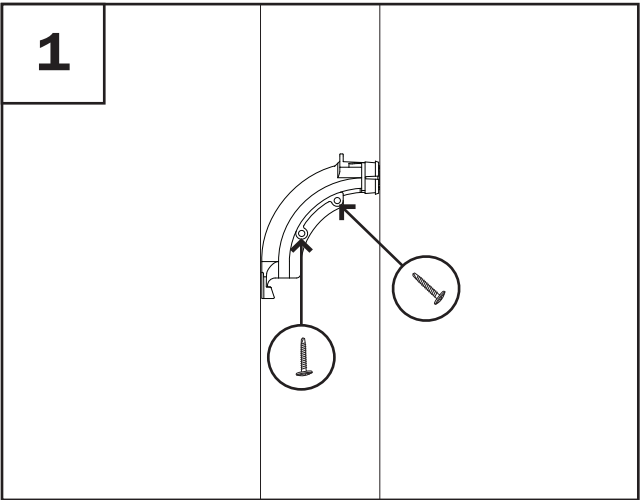
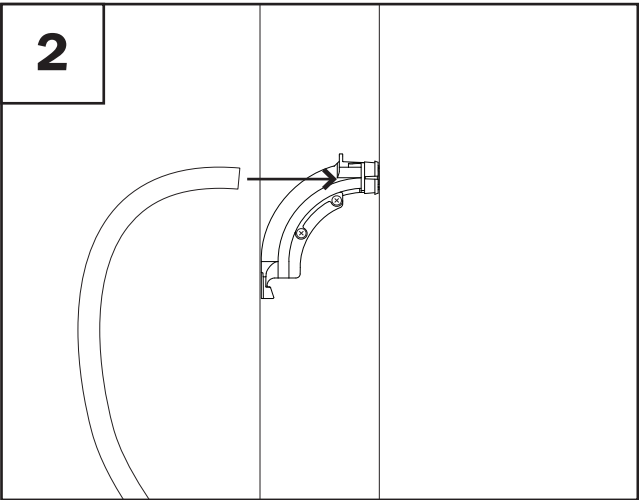


Plastic Bend Support

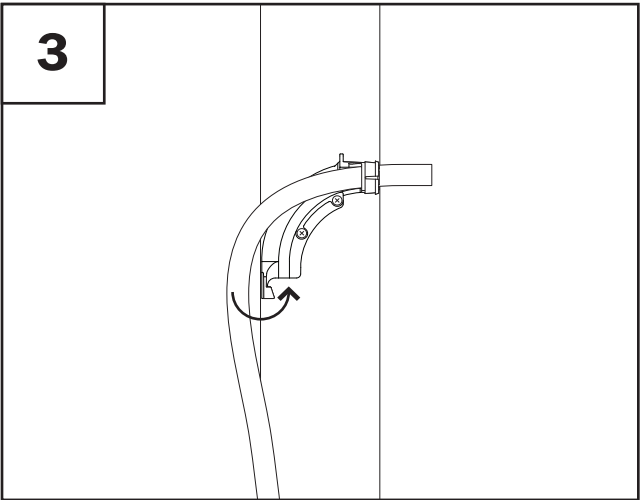
Instruction Sheet



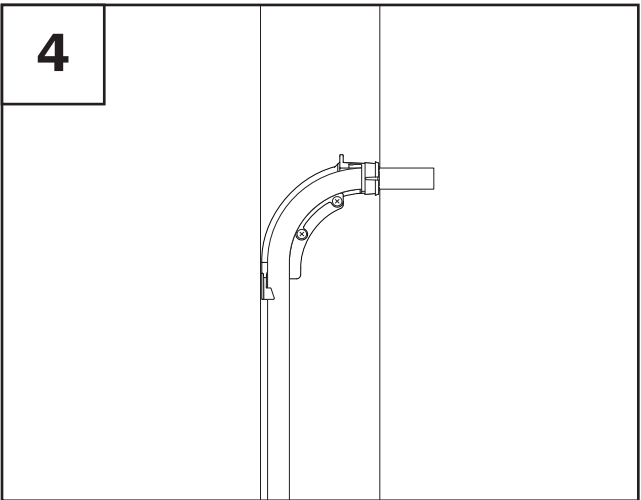
Using nails or screws, install plastic elbow directly to stud.



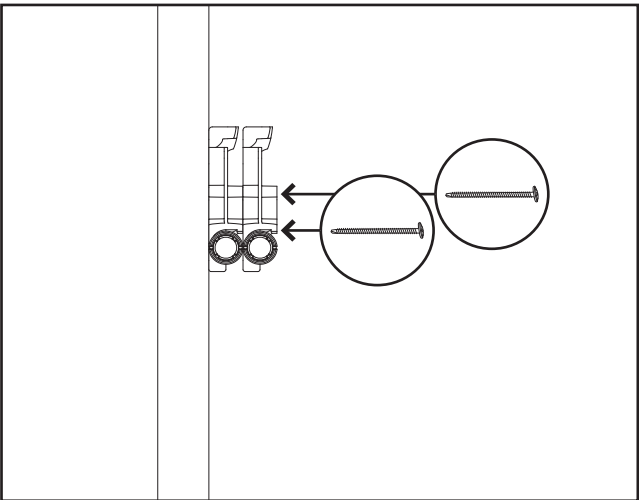
Insert end of tube into top 'nose' of plastic bend support.



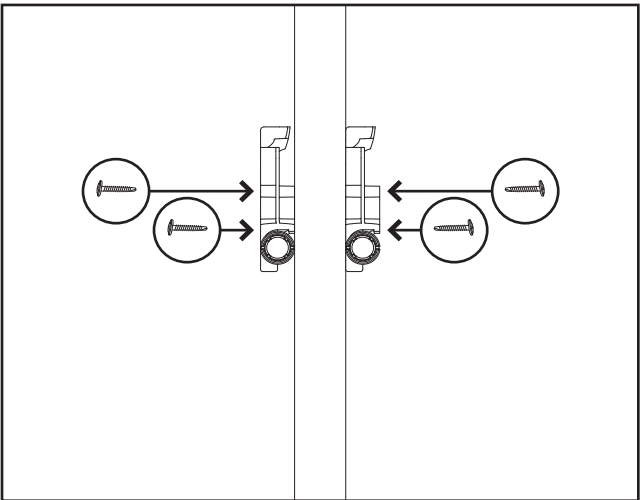
Holding opposite end of tube, guide tube through radius and around small hook on 'tail' end of the bend support.



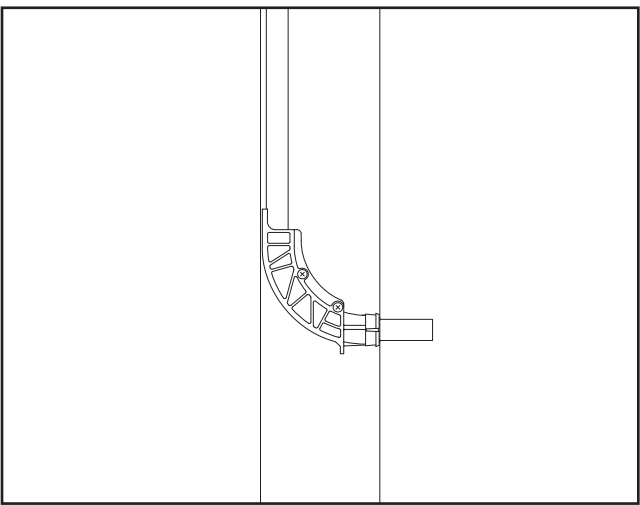
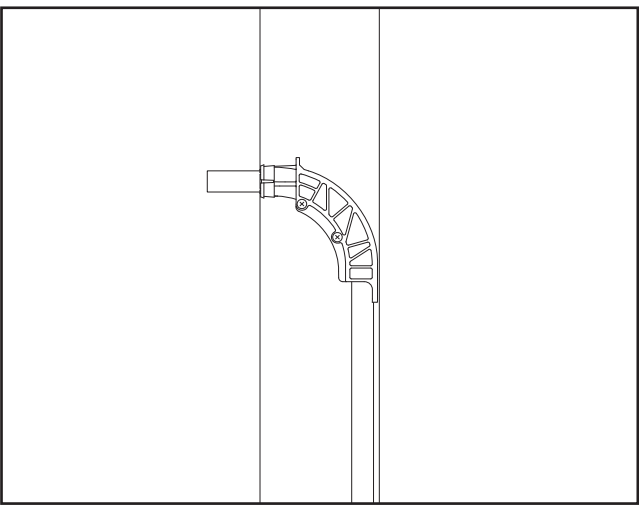
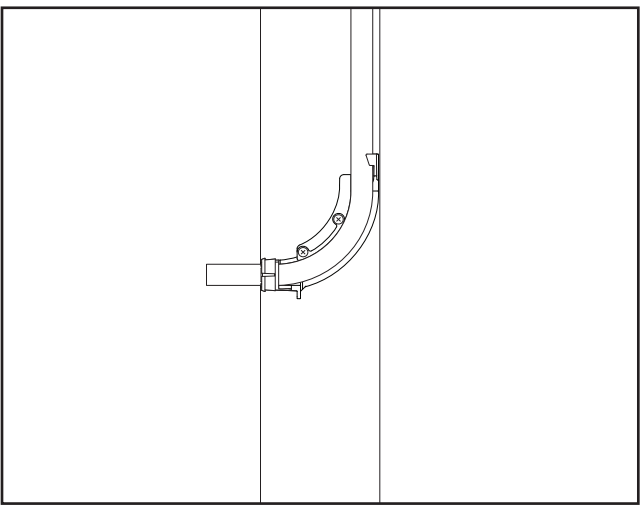
Installation complete.



Using longer screws, two plastic elbows may be stacked against one side of the stud.



Two plastic elbows may be installed to straddle a stud for hot and cold supply.



Plastic elbow may be installed on either side of stud, with flexible supply tube from above or below.