

Part No.	Reference No.	Quantity	Description
4TXUUP1_4TXUUP1_147268~P	*		4TXUUP1 PARTS LIST
75010941#4TXUUP1~S	*		GENERAL ASSEMBLY 1.5 & 2.0 TON CONVERTIBLE FLOOR/CEILING
75010947#4TXUUP1~S	*		MODEL NOMENCLATURE

NO GRAPHIC AVAILABLE

75013702

REV
A

**NO
GRAPHIC
AVAILABLE**

MODEL NUMBER DESCRIPTION 75010947
PRO SERIES HEAT PUMP CONVERTIBLE MODEL NOMENCLATURE

REV.
A

Example Model Number:
4UXX2048A10N0AA
1 - - - 5 - - - - 10 - - - - 15

Digit 1 – Refrigerant

4 = R-410A

Digit 2 – Brand

U = Pro Series

Digit 3 – Functional Type

X = Heat Pump Inverter

Digit 4 – Configuration Indoor Unit

X = Convertible (Floor/Ceiling) Mount

Digits 5, 6 – Efficiency Tier

20 = Up to 20 SEER Pro Series

Digits 7, 8 – Nominal Capacity (Btu/h x 1,000)

18 = 18,000 Btu/h

24 = 24,000 Btu/h

30 = 30,000 Btu/h

36 = 36,000 Btu/h

42 = 42,000 Btu/h

48 = 48,000 Btu/h

Digit 9 – Major Development Sequence

A = First Development Sequence

Digit 10 – Electric Power Supply

1 = 208-230/60/1

Digit 11 – Reserved for Future Use

0 = Not Currently Used

Digit 12 – Regional Markets Served

N = North America Market

Digit 13 – Reserved for Future Use

0 = Not Currently Used

Digit 14 – Minor Design Sequence

A = First Design Sequence

Digit 15 – Service Digit

A = First Sequence

Part No.	Reference No.	Quantity	Description
75010947_4TXUUP1_147274~P	*		MODEL NOMENCLATURE PARTS LIST

MODEL NUMBER DESCRIPTION 75010947
PRO SERIES HEAT PUMP CONVERTIBLE MODEL NOMENCLATURE

REV.
A

Example Model Number:
4UXX2048A10N0AA
1 - - - 5 - - - - 10 - - - - 15

Digit 1 – Refrigerant

4 = R-410A

Digit 2 – Brand

U = Pro Series

Digit 3 – Functional Type

X = Heat Pump Inverter

Digit 4 – Configuration Indoor Unit

X = Convertible (Floor/Ceiling) Mount

Digits 5, 6 – Efficiency Tier

20 = Up to 20 SEER Pro Series

Digits 7, 8 – Nominal Capacity (Btu/h x 1,000)

18 = 18,000 Btu/h

24 = 24,000 Btu/h

30 = 30,000 Btu/h

36 = 36,000 Btu/h

42 = 42,000 Btu/h

48 = 48,000 Btu/h

Digit 9 – Major Development Sequence

A = First Development Sequence

Digit 10 – Electric Power Supply

1 = 208-230/60/1

Digit 11 – Reserved for Future Use

0 = Not Currently Used

Digit 12 – Regional Markets Served

N = North America Market

Digit 13 – Reserved for Future Use

0 = Not Currently Used

Digit 14 – Minor Design Sequence

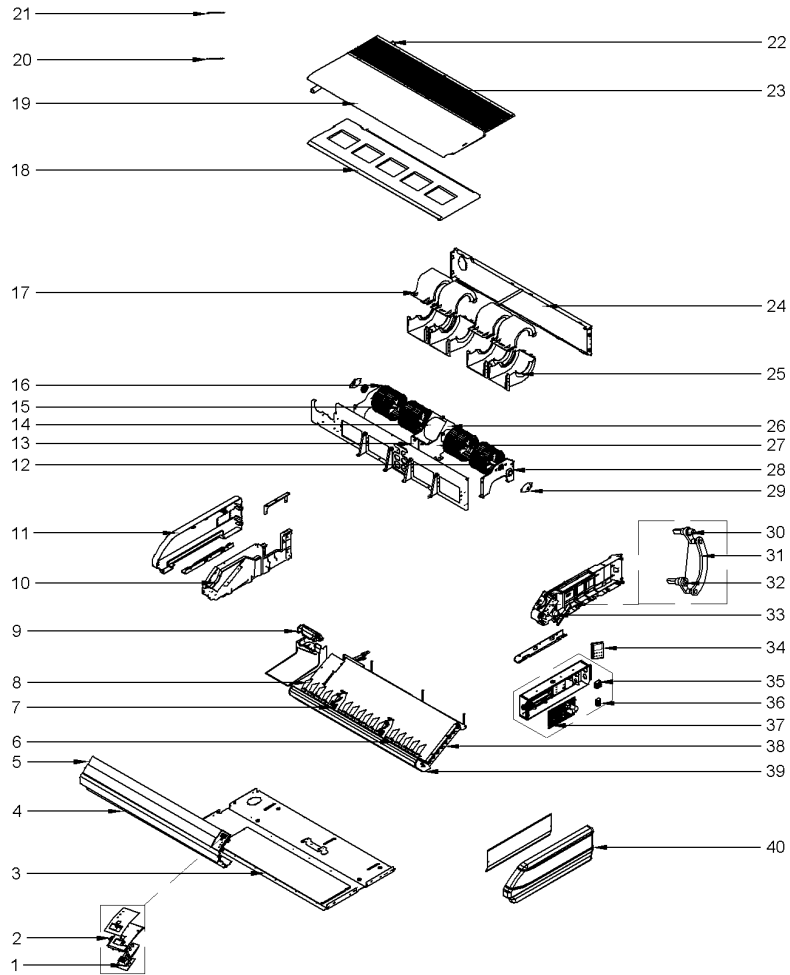
A = First Design Sequence

Digit 15 – Service Digit

A = First Sequence

PRO SERIES HP CONVERTIBLE FLOOR/CEILING 75010941
1.5 & 2.0 TON

REV.
A



This is a typical illustration. The unit in the field may not appear exactly as shown.

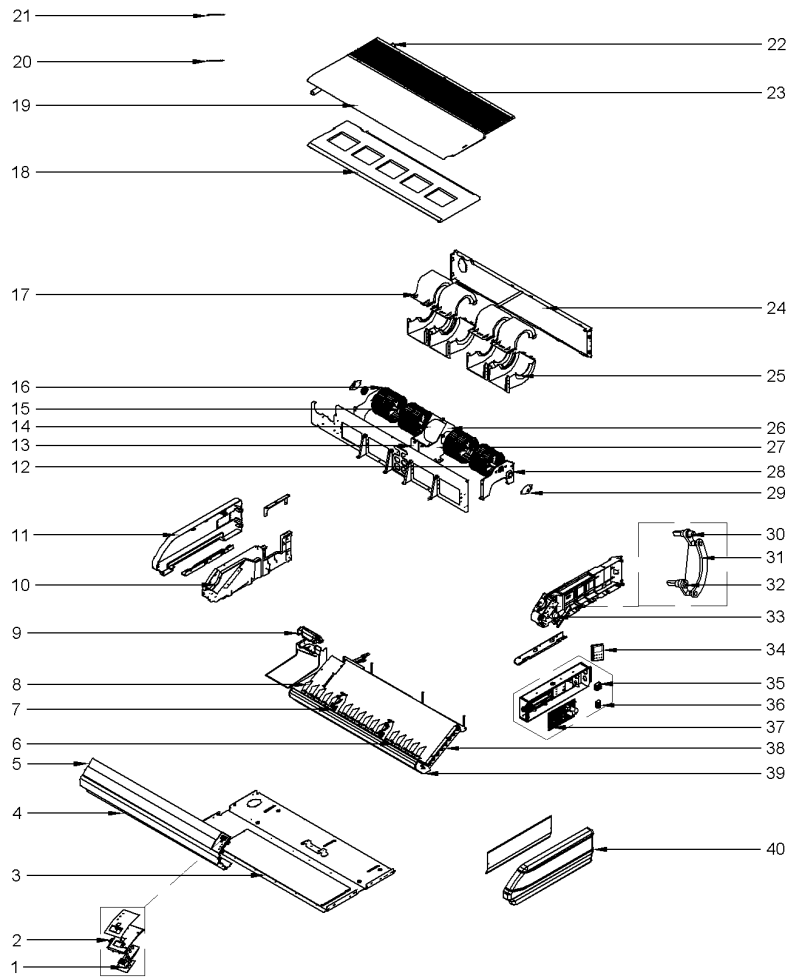
Parts List Number :4TXUUP1#4TXUUP1

Model Number :4UXX2018A10N0AA

Part No.	Reference No.	Quantity	Description
75010941_4TXUUP1_191084~P	*		GENERAL ASSEMBLY 1.5 & 2.0 TON CONVERTIBLE FLOOR/CEILING PARTS LIST

PRO SERIES HP CONVERTIBLE FLOOR/CEILING 75010941
1.5 & 2.0 TON

REV
A



This is a typical illustration. The unit in the field may not appear exactly as shown.

Parts List Number :4TXUUP1#4TXUUP1

Model Number :4UXX2018A10N0AA

Part No.	Reference No.	Quantity	Description
BRD05289	1	1	BOARD; DISPLAY
PLT05682	2	1	PLATE; FIXED MOUNT
PNL32545	3	1	PANEL; REAR SIDE PLATE ASSY
PNL32544	4	1	PANEL; FRONT CONNECTION BOARD
LVR01143	5	2	LOUVER; GUIDE
SHF03613	6	4	SHAFT; ROTATING
SUP05969	7	2	SUPPORT;
LVR01144	8	16	LOUVER; AIR
PLT05681	9	1	PLATE; BOARD OF WATER RELEASING FLUME
BUS02179	10	2	BUSHING; AXILE
PNL29826	11	1	PANEL; RIGHT COVER PLATE
SHF03616	12	2	SHAFT; ROTARY AXIS SUB-ASSY
SUP05972	13	1	SUPPORT;
MOT17026	14	1	MOTOR; FAN
UNN00978	15	2	UNION; JOINT SLACK
FAN05031	16	4	FAN; CENTRIFUGAL FAN
HUS04122	17	4	HOUSING; REAR VOLUTE CASING
PAN03414	18	1	PAN; WATER TRAY ASSY
PNL29831	19	1	PANEL; TOP COVER BOARD SUB-ASSY
SEN01818	20	1	SENSOR; ROOM SENSOR(390001912)
SEN02406	21	1	SENSOR; TEMPERATURE
PIP01684	22	1	PIPE; DRAIN PIPE
GRL01919	23	2	GRILLE; FRONT SUB-ASSY
PNL32546	24	1	PANEL; REAR CONNECTION BOARD
HUS04121	25	4	HOUSING; FRONT VOLUTE CASING
CON01872	26	1	CONNECTOR; BAR CLASP SUB-ASSY
SUP05971	27	1	SUPPORT;
GKT04804	28	2	GASKET; O-GASKET OF BEARING
SUP05970	29	2	SUPPORT; OF MOTOR BEARING
SHF03916	30	1	SHAFT; ROTATING SHAFT
ROD01429	31	1	ROD; CONNECTING
SHF03614	32	1	SHAFT; ROTATING
MOT16160	33	1	MOTOR; STEP
BRD05262	34	1	BOARD; DISPLAY (WIRED CONTROLLER XK60)
BRD05246	35	1	BOARD; TERMINAL
BRD03952	36	1	BOARD; TERMINAL BOARD(42010178)
BRD05290	37	1	BOARD; MAIN
COL25622	38	1	COIL; EVAPORATOR ASSY
LVR01175	39	1	LOUVER; GUIDE SUPPORTER SUB-ASSY
COV04961	40	1	COVER; LEFT PLATE