

Part No.	Reference No.	Quantity	Description
4TXUUP1_4TXUUP1_147268~P	*		4TXUUP1 PARTS LIST
75010839#4TXUUP1~S	*		GENERAL ASSEMBLY CASSETTE COVERS 3.5, 4.0 TON
75010846#4TXUUP1~S	*		MODEL NOMENCLATURE

NO GRAPHIC AVAILABLE

75013702

REV
A

**NO
GRAPHIC
AVAILABLE**

MODEL NUMBER DESCRIPTION
INDOOR PRO SERIES MODEL NOMENCLATURE

75010846

REV.
A

Example Model Number:
4 UXC 20 18 A 10 N0 AA
1 - - - 5 - - - - 10 - - - - 15

Digit 1 – Refrigerant

4 = R-410A

Digit 2 – Brand

U = Pro Series
M = Indoor Unit

Digit 3 – Functional Type

X = Heat Pump Inverter

Digit 4 – Configuration Indoor Unit

C = Cassette Unit
D = Concealed (Duct) Unit
L = Cassette Covers

Digits 5, 6 – Efficiency Tier

20 = Up to 20 SEER Pro Series

Digits 7, 8 – Nominal Capacity (Btu/h x 1,000)

18 = 18,000 Btu/h
24 = 24,000 Btu/h
30 = 30,000 Btu/h
36 = 36,000 Btu/h
42 = 42,000 Btu/h
48 = 48,000 Btu/h

Digit 9 – Major Development Sequence

A = First Development Sequence

Digit 10 – Electric Power Supply

1 = 208-230/60/1

Digit 11 – Reserved for Future Use

0 = Not Currently Used

Digit 12 – Regional Markets Served

N = North America Market

Digit 13 – Reserved for Future Use

0 = Not Currently Used

Digit 14 – Minor Design Sequence

A = First Design Sequence

Digit 15 – Service Digit

A = First Sequence

Part No.	Reference No.	Quantity	Description
75010846_4TXUUP1_182410~P	*		MODEL NOMENCLATURE PARTS LIST

MODEL NUMBER DESCRIPTION
INDOOR PRO SERIES MODEL NOMENCLATURE

75010846

REV.
A

Example Model Number:
4 U X C 2 0 1 8 A 1 0 N 0 A A
1 - - - 5 - - - - 10 - - - - 15

Digit 1 – Refrigerant

4 = R-410A

Digit 2 – Brand

U = Pro Series
M = Indoor Unit

Digit 3 – Functional Type

X = Heat Pump Inverter

Digit 4 – Configuration Indoor Unit

C = Cassette Unit
D = Concealed (Duct) Unit
L = Cassette Covers

Digits 5, 6 – Efficiency Tier

20 = Up to 20 SEER Pro Series

Digits 7, 8 – Nominal Capacity (Btu/h x 1,000)

18 = 18,000 Btu/h
24 = 24,000 Btu/h
30 = 30,000 Btu/h
36 = 36,000 Btu/h
42 = 42,000 Btu/h
48 = 48,000 Btu/h

Digit 9 – Major Development Sequence

A = First Development Sequence

Digit 10 – Electric Power Supply

1 = 208-230/60/1

Digit 11 – Reserved for Future Use

0 = Not Currently Used

Digit 12 – Regional Markets Served

N = North America Market

Digit 13 – Reserved for Future Use

0 = Not Currently Used

Digit 14 – Minor Design Sequence

A = First Design Sequence

Digit 15 – Service Digit

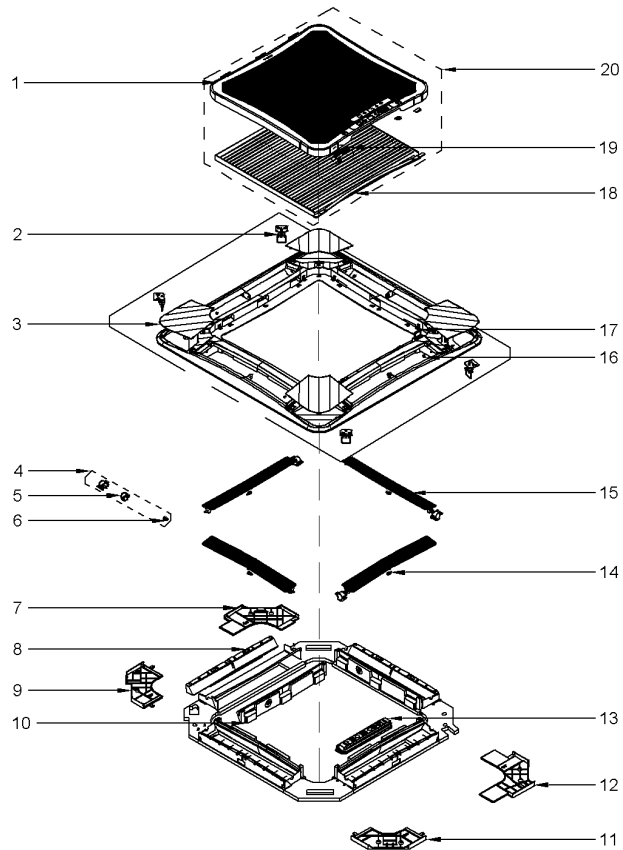
A = First Sequence

GENERAL ASSEMBLY

75010839

REV.
A

INDOOR 3.5 & 4.0 TON PRO SERIES CASSETTE COVERS
TYPICAL ILLUSTRATION



Parts List Number :4TXUUP1#4TXUUP1

Model Number :4UXL2042A10N0AA

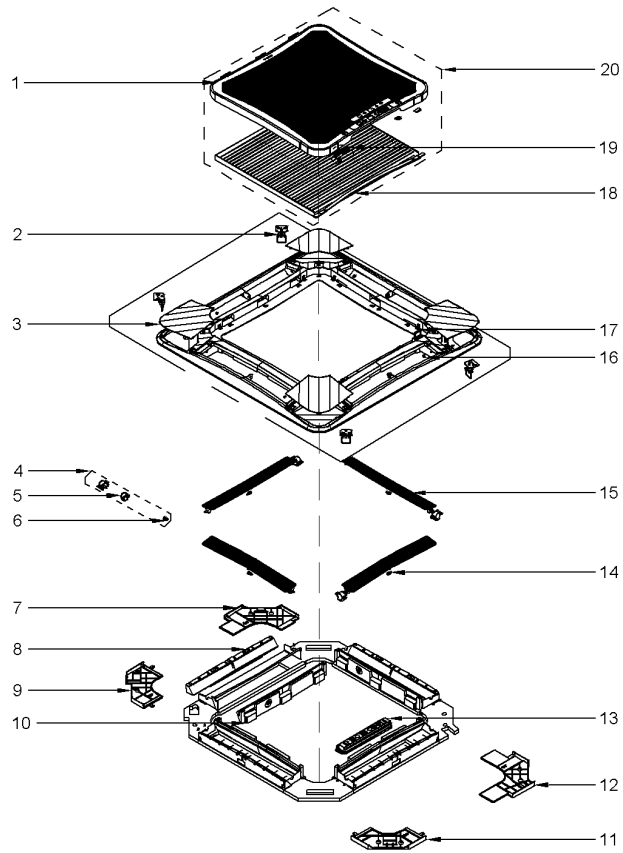
Part No.	Reference No.	Quantity	Description
75010839_4TXUUP1_359111~P	*		GENERAL ASSEMBLY CASSETTE COVERS 3.5, 4.0 TON PARTS LIST

GENERAL ASSEMBLY

75010839

REV.
A

INDOOR 3.5 & 4.0 TON PRO SERIES CASSETTE COVERS
TYPICAL ILLUSTRATION



Parts List Number :4TXUUP1#4TXUUP1

Model Number :4UXL2042A10N0AA

Part No.	Reference No.	Quantity	Description
GRL01952	1	1	GRILLE; FRONT
RNG02377	2	4	RING; HANGING
COV04941	3	1	COVER; OUTER CONNER SUB-ASSY
MOT17033	4	4	MOTOR; LOUVER, SUB-ASSY
MOT17034	5	1	MOTOR; STEP
TOL03841	6	1	TOOL; CRANK
COV04942	7	1	COVER; INNER CONNER IV SUB-ASSY
PNL32174	8	4	PANEL; AIR OUTLE FOAMT 1
COV04943	9	1	COVER; INNER CONNER III SUB-ASSY
PNL32175	10	4	PANEL; AIR OUTLE FOAMT 2
COV04944	11	1	COVER; INNER CONNER II SUB-ASSY
COV04945	12	1	COVER; INNER CONNER I SUB-ASSY
BRD05263	13	1	BOARD; RECEIVER
BUS02047	14	4	BUSHING; AXILE
LVR01170	15	4	LOUVER; GUIDE
BUS02159	16	4	BUSHING; LEFT AXILE
MAG00120	17	1	MAGNET; SUB-ASSY
FLR08138	18	1	FILTER; SUB-ASSY
HLD00621	19	1	HOLDER; FASTENER SUB-ASSY
GRL01956	20	1	GRILLE; FRONT ASSY