

Part No.	Reference No.	Quantity	Description
4TXUUP1_4TXUUP1_147268~P	*		4TXUUP1 PARTS LIST
75010938#4TXUUP1~S	*		GENERAL ASSEMBLY OUTDOOR 3.0 TON
75010847#4TXUUP1~S	*		MODEL NOMENCLATURE

NO GRAPHIC AVAILABLE

75013702

REV
A

**NO
GRAPHIC
AVAILABLE**

MODEL NUMBER DESCRIPTION
OUTDOOR PRO SERIES MODEL NOMENCLATURE

75010847

REV.
A

Example Model Number:
4TXU2018A10N0AA
1 - - - - 5 - - - - 10 - - - - 15

Digit 1 – Refrigerant

4 = R-410A

Digit 2 – Brand

T = Outdoor Unit

Digit 3 – Functional Type

X = Heat Pump Inverter

Digit 4 – Configuration Outdoor Unit

U = Pro Series

Digits 5, 6 – Efficiency Tier

20 = Up to 20 SEER Pro Series

Digits 7, 8 – Nominal Capacity (Btu/h x 1,000)

18 = 18,000 Btu/h

24 = 24,000 Btu/h

30 = 30,000 Btu/h

48 = 48,000 Btu/h

Digit 9 – Major Development Sequence

A = First Development Sequence

Digit 10 – Electric Power Supply

1 = 208-230/60/1

Digit 11 – Reserved for Future Use

0 = Not Currently Used

Digit 12 – Regional Markets Served

N = North America Market

Digit 13 – Reserved for Future Use

0 = Not Currently Used

Digit 14 – Minor Design Sequence

A = First Design Sequence

Digit 15 – Service Digit

A = First Sequence

Part No.	Reference No.	Quantity	Description
75010847_4TXUUP1_319176~P	*		MODEL NOMENCLATURE PARTS LIST

MODEL NUMBER DESCRIPTION
OUTDOOR PRO SERIES MODEL NOMENCLATURE

75010847

REV.
A

Example Model Number:
4TXU2018A10N0AA
1 - - - - 5 - - - - 10 - - - - 15

Digit 1 – Refrigerant

4 = R-410A

Digit 2 – Brand

T = Outdoor Unit

Digit 3 – Functional Type

X = Heat Pump Inverter

Digit 4 – Configuration Outdoor Unit

U = Pro Series

Digits 5, 6 – Efficiency Tier

20 = Up to 20 SEER Pro Series

Digits 7, 8 – Nominal Capacity (Btu/h x 1,000)

18 = 18,000 Btu/h

24 = 24,000 Btu/h

30 = 30,000 Btu/h

48 = 48,000 Btu/h

Digit 9 – Major Development Sequence

A = First Development Sequence

Digit 10 – Electric Power Supply

1 = 208-230/60/1

Digit 11 – Reserved for Future Use

0 = Not Currently Used

Digit 12 – Regional Markets Served

N = North America Market

Digit 13 – Reserved for Future Use

0 = Not Currently Used

Digit 14 – Minor Design Sequence

A = First Design Sequence

Digit 15 – Service Digit

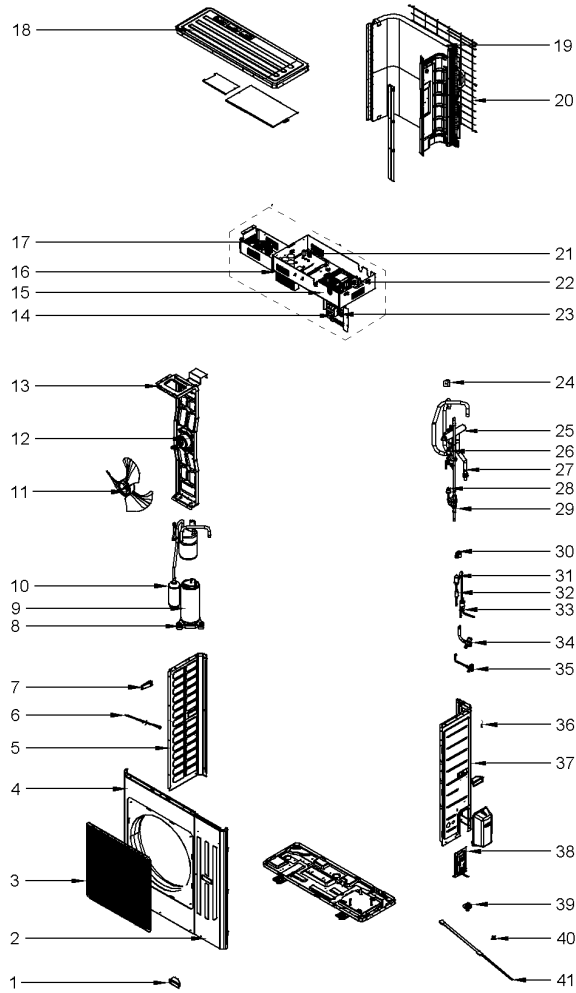
A = First Sequence

GENERAL ASSEMBLY

75010938

REV.
A

OUTDOOR 3.0 TON HEAT PUMP INVERTER PRO SERIES
TYPICAL ILLUSTRATION



Parts List Number :4TXUUP1#4TXUUP1

Model Number :4TXU2036A10N0AA

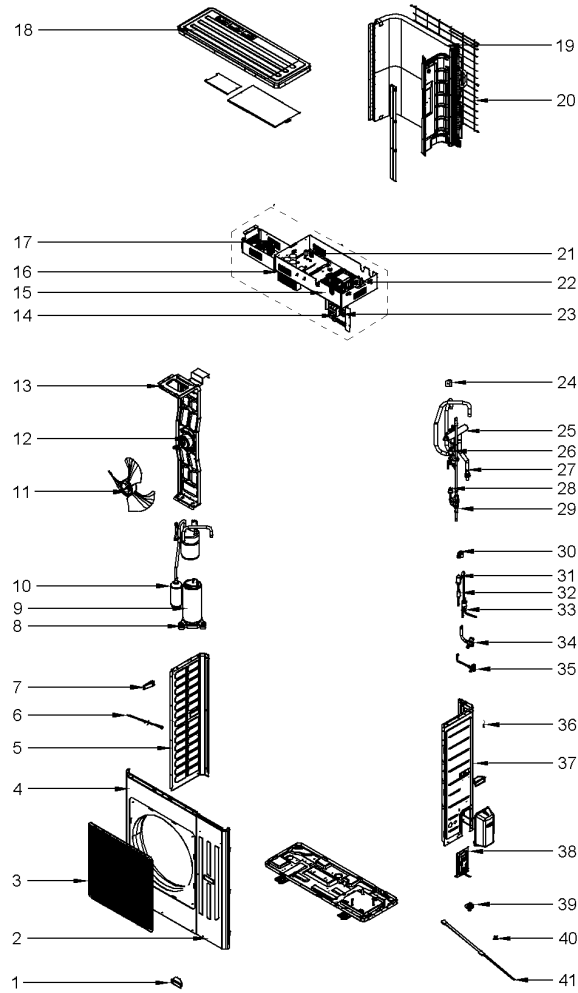
Part No.	Reference No.	Quantity	Description
75010938_4TXUUP1_474543~P	*		GENERAL ASSEMBLY OUTDOOR 3.0 TON PARTS LIST

GENERAL ASSEMBLY

75010938

REV.
A

OUTDOOR 3.0 TON HEAT PUMP INVERTER PRO SERIES
TYPICAL ILLUSTRATION



Parts List Number :4TXUUP1#4TXUUP1

Model Number :4TXU2036A10N0AA

Part No.	Reference No.	Quantity	Description
BAS03266	*	1	BASE; CHASSIS SUB-ASSY
HDL01293	1	1	HANDLE;
PLT05672	2	1	PLATE; FRONT SIDE
GRL01968	3	1	GRILLE; FRONT
PNL31519	4	1	PANEL; CABINET OF AIR CONDITIONER
PLT05237	5	1	PLATE; LEFT SIDE PLATE OF AIR CONDITIONER
HTR15947	6	1	HEATER; PAN, SUB-ASSY
HDL01103	7	1	HANDLE; LEFT HANDLE(26235401)
GKT04766	8	3	GASKET; COMPRESSOR
COM11927	9	1	COMPRESSOR;
SEP00273	10	1	SEPARATOR; GAS-LIQUID SUB-ASSY
FAN05493	11	1	FAN; AXIAL FLOW
MOT17107	12	1	MOTOR; FAN
SUP05963	13	1	SUPPORT; MOTOR SUB-ASSY
BRD04893	14	1	BOARD; TERMINAL
BRD05248	15	1	BOARD: FILTER
EXC02656	16	1	EXCHANGER; RADIATOR
HTR11042	17	1	HEATER; PFC INDUCTANCE(43120011)
PNL29977	18	1	PANEL; TOP
COL25616	19	1	CONDENSER; ASSY
GRL01967	20	1	GRILLE; REAR
BRD05285	21	1	BOARD; DRIVE
BRD05287	22	1	BOARD; MAIN
BRD05244	23	1	BOARD; TERMINAL
COL16754	24	1	COIL; SOLNOID REVERSING VALVE
VAL12008	25	1	VALVE; 4-WAY ASSY
SWT03651	26	1	SWITCH; PRESSURE PROTECT
SRA01028	27	1	STRAINER;
SWT03911	28	1	SWITCH; PRESSURE PROTECT
BAF01420	29	1	BAFFLE; SILENCER
FTG01378	30	1	FITTING; VALVE, ELECTRIC EXPAND
VAL12010	31	1	VALVE; ELECTRIC EXPANSION SUB-ASSY
SRA01037	32	1	STRAINER;
SRA01034	33	1	STRAINER;
VAL09900	34	1	VALVE; CUT-OFF (GAS)
VAL09988	35	1	VALVE; CUT-OFF VALVE
SEN02403	36	1	SENSOR; TEMPERATURE
PNL32540	37	1	PANEL; RIGHT SIDE PLATE SUB-ASSY
PNL32541	38	1	PANEL; VALVE SUPPORT SUB-ASSY
FTG01286	39	1	FITTING;DRAINAGE JOINT
OLD00725	40	1	OVERLOAD; COMPRESSOR, PROTECTOR, EXTERNAL
HTR12715	41	1	HEATER; ELECTRICAL HEATER(COMPRESSOR)