

<b>Part No.</b>	<b>Reference No.</b>	<b>Quantity</b>	<b>Description</b>
4MXWUP4_4MXWUP4_177652~ P	*		4MXWUP4 PARTS LIST
75011642#4MXWUP4~S	*		.75 & 1.0 TON OUTDOOR FAN, COIL, COM & CONTROLS SECTION
75011641#4MXWUP4~S	*		.75 & 1.0 TON OUTDOOR PANELS SECTION
75011611#4MXWUP4~S	*		OUTDOOR MODEL NOMENCLATURE

NO GRAPHIC AVAILABLE

75013702

REV  
A

**NO  
GRAPHIC  
AVAILABLE**

MODEL NUMBER DESCRIPTION	75011611	REV. A
Amber ODU		
<i>Example Model Number:</i> <b>4TXK3809A10NUAA</b> <small>1 - - - 9 - - - - 10 - - - - 15</small>		
<b>Digits 1 – Refrigerant</b> 4 = R-410A		
<b>Digits 2 – Brand</b> T = Trane		
<b>Digits 3 – Functional Type</b> X = Heat Pump Inverter		
<b>Digits 4 – Configuration Outdoor Unit</b> K = Single Refrigerant Circuit		
<b>Digits 5, 6 – Efficiency Tier</b> 38 = Up To 38 SEER Ultra Low		
<b>Digits 7, 8 – Nominal Capacity (Btu/h x 1,000)</b> 09 = 9,000 Btu/h 12 = 12,000 Btu/h 18 = 18,000 Btu/h 24 = 24,000 Btu/h		
<b>Digits 9 – Major Development Sequence</b> A = First Development Sequence B = Second Development Sequence C = Third Development Sequence		
<b>Digits 10 – Electric Power Supply Characteristics</b> 1 = 208-230/60/1		
<b>Digits 11 – Open for future development</b> 0 = Unused		
<b>Digits 12 – Configuration Indoor Unit Regional Markets Served (1:1 Systems)</b> N = North America Market		
<b>Digits 13 – Special Unit Designator</b> U = Ultra Low Ambient		
<b>Digits 14 – Minor Design Sequence</b> A = First Design Sequence B = Second Design Sequence		
<b>Digits 15 – Service Digit</b>		
1 of 1		

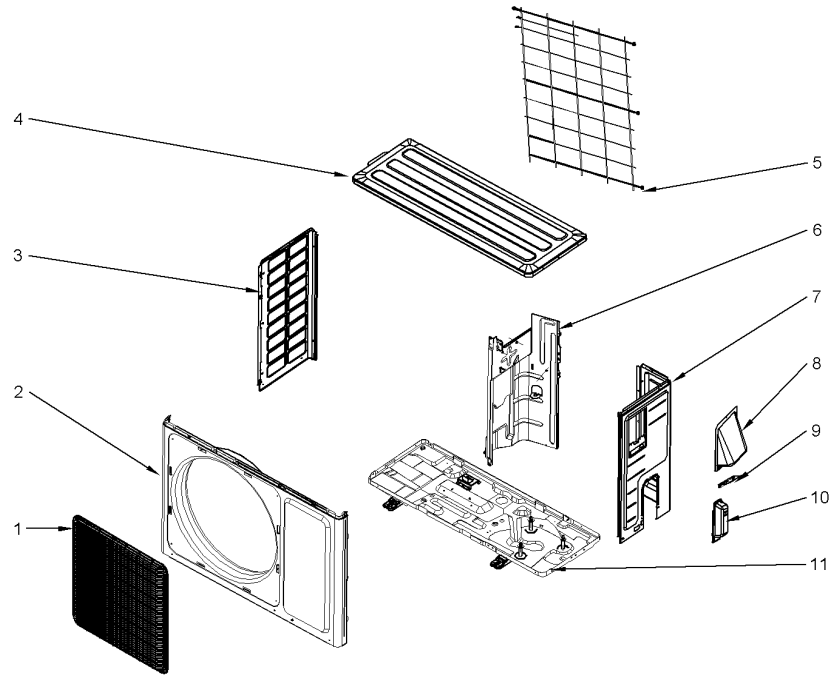
Part No.	Reference No.	Quantity	Description
75011611_4MXWUP4_177653~P	*		OUTDOOR MODEL NOMENCLATURE PARTS LIST

MODEL NUMBER DESCRIPTION	75011611	REV. A
Amber ODU		
<i>Example Model Number:</i> <b>4TXK3809A10NUAA</b> <small>1 - - - 5 - - - - 10 - - - - 15</small>		
<b>Digits 1 – Refrigerant</b> 4 = R-410A		
<b>Digits 2 – Brand</b> T = Trane		
<b>Digits 3 – Functional Type</b> X = Heat Pump Inverter		
<b>Digits 4 – Configuration Outdoor Unit</b> K = Single Refrigerant Circuit		
<b>Digits 5, 6 – Efficiency Tier</b> 38 = Up To 38 SEER Ultra Low		
<b>Digits 7, 8 – Nominal Capacity (Btu/h x 1,000)</b> 09 = 9,000 Btu/h 12 = 12,000 Btu/h 18 = 18,000 Btu/h 24 = 24,000 Btu/h		
<b>Digits 9 – Major Development Sequence</b> A = First Development Sequence B = Second Development Sequence C = Third Development Sequence		
<b>Digits 10 – Electric Power Supply Characteristics</b> 1 = 208-230/60/1		
<b>Digits 11 – Open for future development</b> 0 = Unused		
<b>Digits 12 – Configuration Indoor Unit Regional Markets Served (1:1 Systems)</b> N = North America Market		
<b>Digits 13 – Special Unit Designator</b> U = Ultra Low Ambient		
<b>Digits 14 – Minor Design Sequence</b> A = First Design Sequence B = Second Design Sequence		
<b>Digits 15 – Service Digit</b>		
1 of 1		

ODU ULTRA LOW AMBIENT HPI SRC AMBER  
.75 & 1.0 TON PANELS SECTION

75011641

REV.  
A



All orderable Service Parts are identified for this product.

Parts that are not identified, will not be available to order.

This is a typical illustration. The unit in the field may not appear exactly as shown.

Parts List Number :4MXWUP4#4MXWUP4

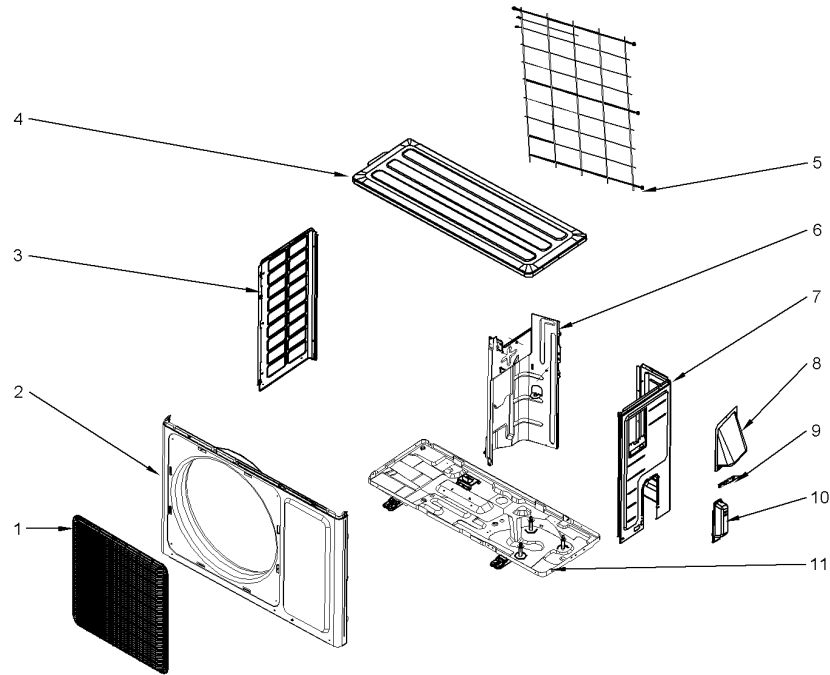
Model Number :4TXK3809B10NUAA

Part No.	Reference No.	Quantity	Description
75011641_4MXWUP4_364071~P	*		.75 & 1.0 TON OUTDOOR PANELS SECTION PARTS LIST

ODU ULTRA LOW AMBIENT HPI SRC AMBER  
.75 & 1.0 TON PANELS SECTION

75011641

REV.  
A



All orderable Service Parts are identified for this product.

Parts that are not identified, will not be available to order.

This is a typical illustration. The unit in the field may not appear exactly as shown.

Parts List Number :4MXWUP4#4MXWUP4

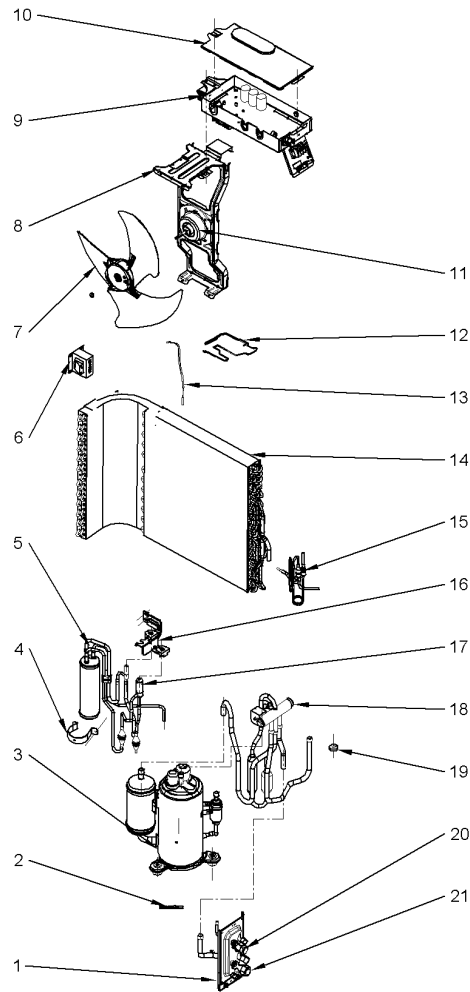
Model Number :4TXK3809B10NUAA

<b>Part No.</b>	<b>Reference No.</b>	<b>Quantity</b>	<b>Description</b>
PAI00420	*	1	PAINT; CUSTOM PAINT MATCH FOR MINI SPLIT
GRL02212	1	1	GRILLE; FRONT GRILL
PNL36421	2	1	PANEL; ASSY, INCLUDES THE FRONT PANEL AND THE GRILLE
PLT05365	3	1	PLATE; LEFT SIDE
COV04856	4	1	COVER; TOP
GRL02059	5	1	GRILLE; REAR
PLT06104	6	1	PLATE; FAN-REFRIGERATION DIVIDER
PLT06107	7	1	PLATE; RIGHT SIDE
PLT05368	8	1	PLATE; CABLE SUPPORT 1
PLT05369	9	1	PLATE; TERMINAL COVER 2
COV04850	10	1	COVER; VALVE
BAS02863	11	1	BASE; CHASSIS SUB-ASSY

ODU ULTRA LOW AMBIENT HPI SRC AMBER  
.75 & 1.0 TON FAN, COIL, COM & CONTROLS SECTION

75011642

REV  
A



All orderable Service Parts are identified for this product.  
Parts that are not identified, will not be available to order.  
This is a typical illustration. The unit in the field may not appear exactly as shown.

Parts List Number :4MXWUP4#4MXWUP4

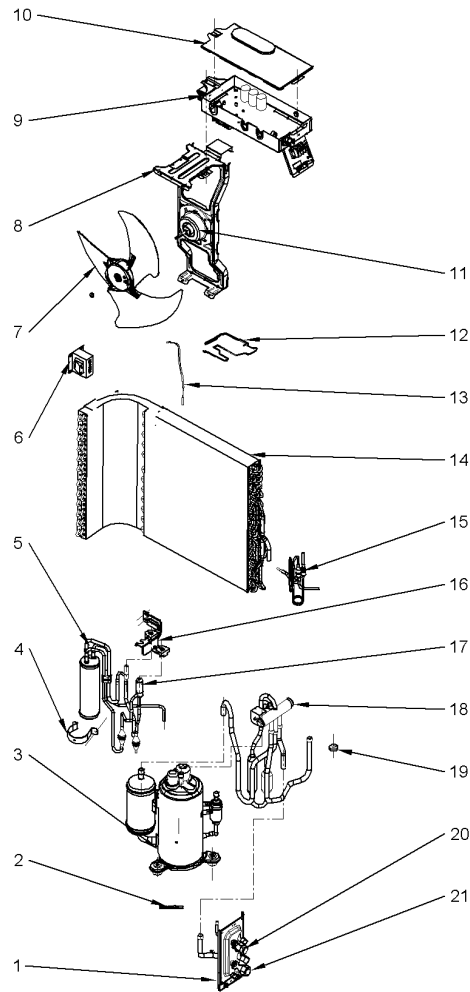
Model Number :4TXK3809B10NUAA

Part No.	Reference No.	Quantity	Description
75011642_4MXWUP4_364072~P	*		.75 & 1.0 TON OUTDOOR FAN, COIL, COM & CONTROLS SECTION PARTS LIST

ODU ULTRA LOW AMBIENT HPI SRC AMBER  
.75 & 1.0 TON FAN, COIL, COM & CONTROLS SECTION

75011642

REV.  
A



All orderable Service Parts are identified for this product.  
Parts that are not identified, will not be available to order.  
This is a typical illustration. The unit in the field may not appear exactly as shown.

Parts List Number :4MXWUP4#4MXWUP4

Model Number :4TXK3809B10NUAA

Part No.	Reference No.	Quantity	Description
BRK04802	1	1	BRACKET; SERVICE VALVE SUPPORT ASSY
HTR16632	2	1	HEATER; COMPRESSOR CRANK CASE
COM12475	3	1	COMPRESSOR;
HLD00687	4	1	HLDER; TUBE CLIP
VAL12633	5	1	VALVE; ASM ELECTRONIC EXPANSION
CNT06823	6	1	CONTROL; REACTOR
FAN05688	7	1	FAN; AXIAL FLOW
BRK04801	8	1	BRACKET; MOTOR SUPPORT SUB ASSY
BOX03965	9	1	BOX; ELECTRIC BOX ASSY
COV04851	10	1	COVER; ELECTRIC BOX SUB-ASSY
MOT17617	11	1	MOTOR; FAN
ELM09213	12	1	ELEMENT; ELECTRICAL HEATER (CHASSIS)
SEN02549	13	1	SENSOR; TEMPERATURE
COL29182	14	1	COIL; CONDENSER ASSY
TUB15242	15	1	TUBE; CAPILLARY SUB-ASSY
PLT06118	16	1	PLATE; STATIONARY BARRIER
VAL12614	17	1	VALVE; ELECTRONIC EXPANSION
VAL12610	18	1	VALVE; 4-WAY ASSY
COL18462	19	1	COIL; MAGNET
VAL09362	20	1	VALVE; CUT-OFF LIQUID
VAL12612	21	1	VALVE; VAPOR SERVICE