

Part No.	Reference No.	Quantity	Description
4MXWUP4_4MXWUP4_177652~ P	*		4MXWUP4 PARTS LIST
75011642#4MXWUP4~S	*		.75 & 1.0 TON OUTDOOR FAN, COIL, COM & CONTROLS SECTION
75011641#4MXWUP4~S	*		.75 & 1.0 TON OUTDOOR PANELS SECTION
75011611#4MXWUP4~S	*		OUTDOOR MODEL NOMENCLATURE

NO GRAPHIC AVAILABLE

75013702

REV
A

**NO
GRAPHIC
AVAILABLE**

MODEL NUMBER DESCRIPTION	75011611	REV. A
Amber ODU		
<i>Example Model Number:</i> 4TXK3809A10NUAA <small>1 - - - 9 - - - - 10 - - - - 15</small>		
Digits 1 – Refrigerant 4 = R-410A		
Digits 2 – Brand T = Trane		
Digits 3 – Functional Type X = Heat Pump Inverter		
Digits 4 – Configuration Outdoor Unit K = Single Refrigerant Circuit		
Digits 5, 6 – Efficiency Tier 38 = Up To 38 SEER Ultra Low		
Digits 7, 8 – Nominal Capacity (Btu/h x 1,000) 09 = 9,000 Btu/h 12 = 12,000 Btu/h 18 = 18,000 Btu/h 24 = 24,000 Btu/h		
Digits 9 – Major Development Sequence A = First Development Sequence B = Second Development Sequence C = Third Development Sequence		
Digits 10 – Electric Power Supply Characteristics 1 = 208-230/60/1		
Digits 11 – Open for future development 0 = Unused		
Digits 12 – Configuration Indoor Unit Regional Markets Served (1:1 Systems) N = North America Market		
Digits 13 – Special Unit Designator U = Ultra Low Ambient		
Digits 14 – Minor Design Sequence A = First Design Sequence B = Second Design Sequence		
Digits 15 – Service Digit		
1 of 1		

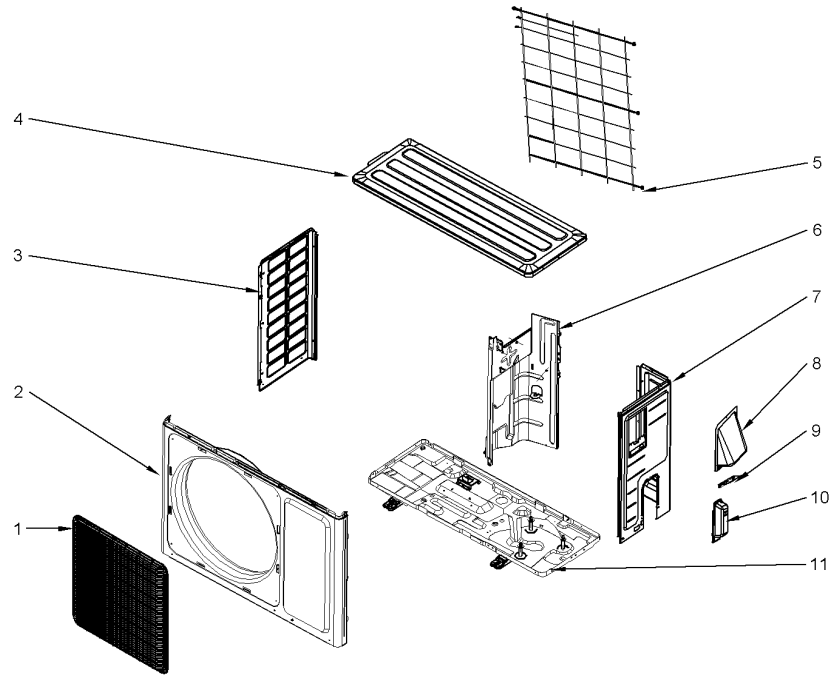
Part No.	Reference No.	Quantity	Description
75011611_4MXWUP4_177653~P	*		OUTDOOR MODEL NOMENCLATURE PARTS LIST

MODEL NUMBER DESCRIPTION	75011611	REV. A
Amber ODU		
<i>Example Model Number:</i> 4TXK3809A10NUAA <small>1 - - - 9 - - - - 10 - - - - 15</small>		
Digits 1 – Refrigerant 4 = R-410A		
Digits 2 – Brand T = Trane		
Digits 3 – Functional Type X = Heat Pump Inverter		
Digits 4 – Configuration Outdoor Unit K = Single Refrigerant Circuit		
Digits 5, 6 – Efficiency Tier 38 = Up To 38 SEER Ultra Low		
Digits 7, 8 – Nominal Capacity (Btu/h x 1,000) 09 = 9,000 Btu/h 12 = 12,000 Btu/h 18 = 18,000 Btu/h 24 = 24,000 Btu/h		
Digits 9 – Major Development Sequence A = First Development Sequence B = Second Development Sequence C = Third Development Sequence		
Digits 10 – Electric Power Supply Characteristics 1 = 208-230/60/1		
Digits 11 – Open for future development 0 = Unused		
Digits 12 – Configuration Indoor Unit Regional Markets Served (1:1 Systems) N = North America Market		
Digits 13 – Special Unit Designator U = Ultra Low Ambient		
Digits 14 – Minor Design Sequence A = First Design Sequence B = Second Design Sequence		
Digits 15 – Service Digit		

ODU ULTRA LOW AMBIENT HPI SRC AMBER
.75 & 1.0 TON PANELS SECTION

75011641

REV.
A



All orderable Service Parts are identified for this product.

Parts that are not identified, will not be available to order.

This is a typical illustration. The unit in the field may not appear exactly as shown.

Parts List Number :4MXWUP4#4MXWUP4

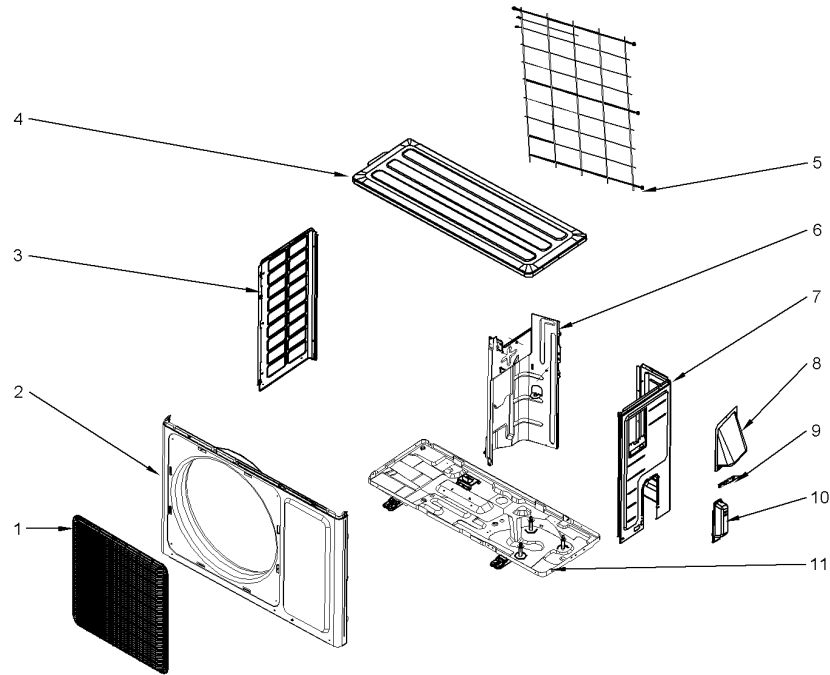
Model Number :4TXK3809A10NUAA

Part No.	Reference No.	Quantity	Description
75011641_4MXWUP4_177656~P	*		.75 & 1.0 TON OUTDOOR PANELS SECTION PARTS LIST

ODU ULTRA LOW AMBIENT HPI SRC AMBER
.75 & 1.0 TON PANELS SECTION

75011641

REV.
A



All orderable Service Parts are identified for this product.

Parts that are not identified, will not be available to order.

This is a typical illustration. The unit in the field may not appear exactly as shown.

Parts List Number :4MXWUP4#4MXWUP4

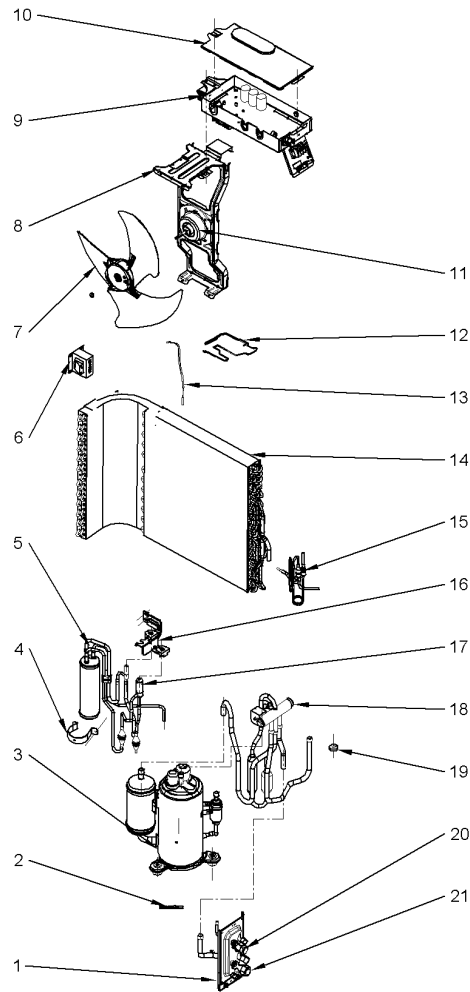
Model Number :4TXK3809A10NUAA

Part No.	Reference No.	Quantity	Description
PAI00420	*	1	PAINT; CUSTOM PAINT MATCH FOR MINI SPLIT
GRL01850	1	1	GRILL; FRONT
PNL31897	2	1	PANEL; CABINET
PLT05365	3	1	PLATE; LEFT SIDE
COV04856	4	1	COVER; TOP
GRL02059	5	1	GRILLE; REAR
PLT06104	6	1	PLATE; FAN-REFRIGERATION DIVIDER
PLT06107	7	1	PLATE; RIGHT SIDE
PLT05368	8	1	PLATE; CABLE SUPPORT 1
PLT05369	9	1	PLATE; TERMINAL COVER 2
COV04850	10	1	COVER; VALVE
BAS02863	11	1	BASE; CHASSIS SUB-ASSY

ODU ULTRA LOW AMBIENT HPI SRC AMBER
.75 & 1.0 TON FAN, COIL, COM & CONTROLS SECTION

75011642

REV.
A



All orderable Service Parts are identified for this product.
Parts that are not identified, will not be available to order.
This is a typical illustration. The unit in the field may not appear exactly as shown.

Parts List Number :4MXWUP4#4MXWUP4

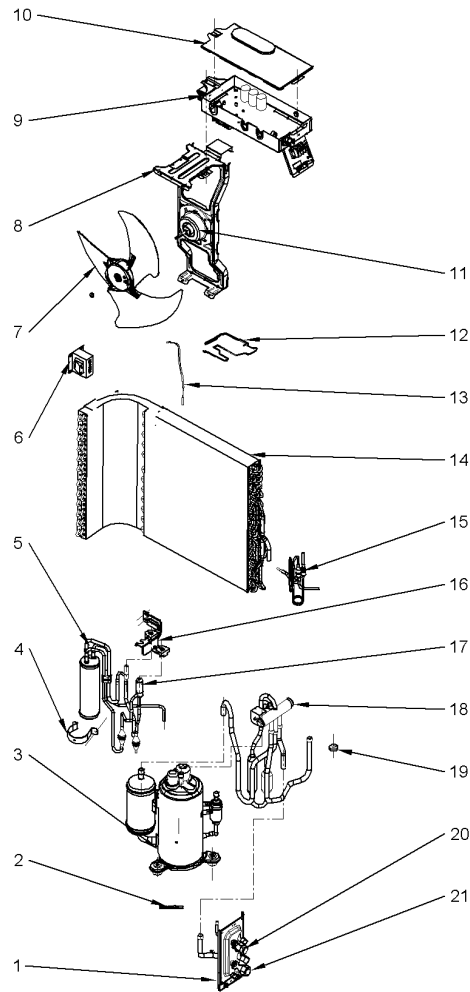
Model Number :4TXK3809A10NUAA

Part No.	Reference No.	Quantity	Description
75011642_4MXWUP4_330799~P	*		.75 & 1.0 TON OUTDOOR FAN, COIL, COM & CONTROLS SECTION PARTS LIST

ODU ULTRA LOW AMBIENT HPI SRC AMBER
.75 & 1.0 TON FAN, COIL, COM & CONTROLS SECTION

75011642

REV
A



All orderable Service Parts are identified for this product.
Parts that are not identified, will not be available to order.
This is a typical illustration. The unit in the field may not appear exactly as shown.

Parts List Number :4MXWUP4#4MXWUP4

Model Number :4TXK3809A10NUAA

Part No.	Reference No.	Quantity	Description
BRK04802	1	1	BRACKET; SERVICE VALVE SUPPORT ASSY
HTR16632	2	1	HEATER; COMPRESSOR CRANK CASE
COM12475	3	1	COMPRESSOR;
HLD00687	4	1	HLDER; TUBE CLIP
VAL12633	5	1	VALVE; ASM ELECTRONIC EXPANSION
CNT06823	6	1	CONTROL; REACTOR
FAN05688	7	1	FAN; AXIAL FLOW
BRK04801	8	1	BRACKET; MOTOR SUPPORT SUB ASSY
BOX03043	9	1	BOX; ELECTRIC ASSY
COV04851	10	1	COVER; ELECTRIC BOX SUB-ASSY
MOT17617	11	1	MOTOR; FAN
ELM09213	12	1	ELEMENT; ELECTRICAL HEATER (CHASSIS)
SEN02549	13	1	SENSOR; TEMPERATURE
COL27780	14	1	COIL; CONDENSER ASSY
DST01142	15	1	DISTRIBUTOR; ASSEMBLY
PLT06118	16	1	PLATE; STATIONARY BARRIER
VAL12614	17	1	VALVE; ELECTRONIC EXPANSION
VAL12609	18	1	VALVE; 4-WAY ASSY
COL18462	19	1	COIL; MAGNET
VAL12613	20	1	VALVE; LIQUID SERVICE
VAL12611	21	1	VALVE; VAPOR SERVICE