

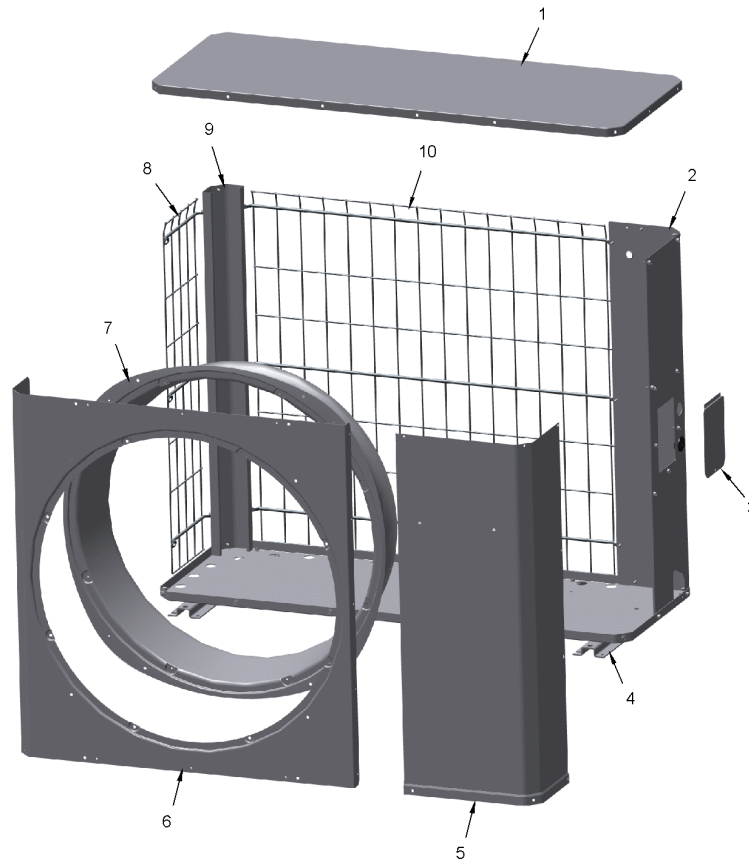
| Part No. | Reference No. | Quantity | Description |
|-----------------|----------------------|-----------------|---------------------------|
| 0000090962~S | * | | CABINET |
| 0000090963~S | * | | CONTROLS |
| 0000090964~S | * | | FAN |
| 0000090961~S | * | | GENERAL ASSEMBLY GRAPHIC |
| 0000090965~S | * | | HARNESS-AOC/MOC INTERFACE |
| 0000090969~S | * | | HARNESS-CL2 FIELD |
| 0000090970~S | * | | HARNESS-POWER INPUT |
| 0000090967~S | * | | HARNESS-SENSORS |
| 0000090971~S | * | | MODEL NUMBER DESCRIPTION |
| 0000090966~S | * | | OPTIONAL ACCESSORIES |
| 0000090968~S | * | | REFRIGERATION |

| Part No. | Reference No. | Quantity | Description |
|-------------|---------------|----------|--------------------|
| 000005417~P | * | | CABINET PARTS LIST |

CABINET

75012536

RP
A



This is a typical illustration. The unit in the field may not appear exactly as shown.

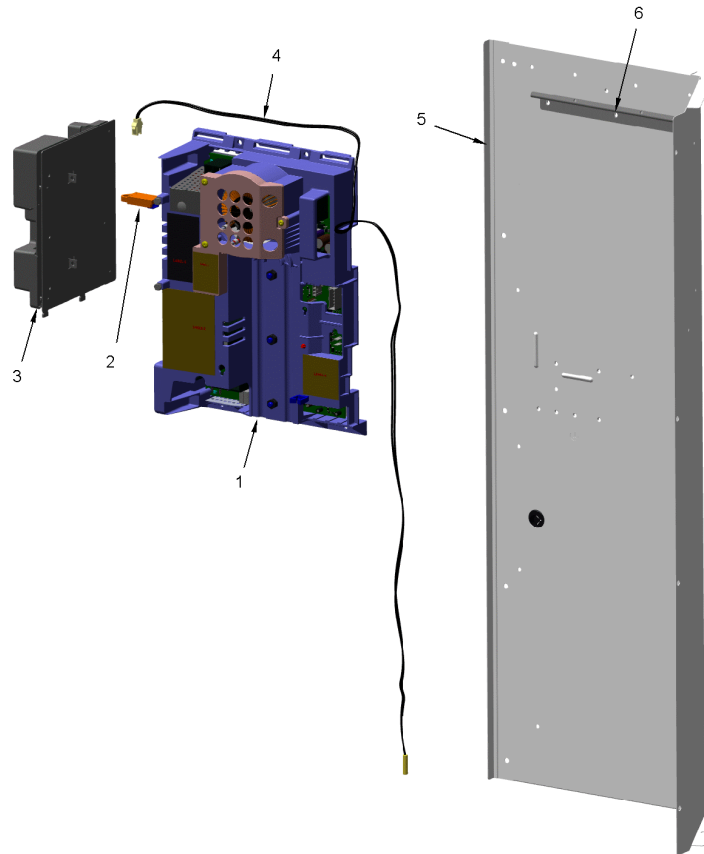
| Part No. | Reference No. | Quantity | Description |
|----------|---------------|----------|---|
| PAI00246 | * | 1 | PAINT; SPRAY, TARPAULIN GRAY (SHIPPING UOM 12 OZ HAZ) |
| COV05328 | 1 | 1 | COVER; TOP, 47.00 X 17.50 |
| PNL35591 | 2 | 1 | PANEL; SERVICE 4.4 TR |
| DOR04389 | 3 | 1 | DOOR; SERVICE PANEL, 5.75 X 4.25 |
| RAL01194 | 4 | 3 | RAIL; BASE, 20.50 X 2.65 X 0.65 |
| PNL34722 | 5 | 1 | PANEL; ACCESS, 41.81 H |
| PNL35669 | 6 | 1 | PANEL; FRONT, 34.62 X 42.00 X 29.70 DIA OPENING |
| ORF02011 | 7 | 1 | ORIFICE; BASE, 39.5 ID DIA |
| GRL02169 | 8 | 1 | GRILLE; WIRE ZLL SIDE 4.4 |
| RAL01205 | 9 | 1 | RAIL; POST-CORNER 4.4 TR |
| GRL02165 | 10 | 1 | GRILLE; WIRE ZLL BACK 4.4 |

| Part No. | Reference No. | Quantity | Description |
|-----------------|----------------------|-----------------|---------------------|
| 000005419~P | * | | CONTROLS PARTS LIST |

CONTROL PANEL

75012700

RP
A



This is a typical illustration. The unit in the field may not appear exactly as shown.

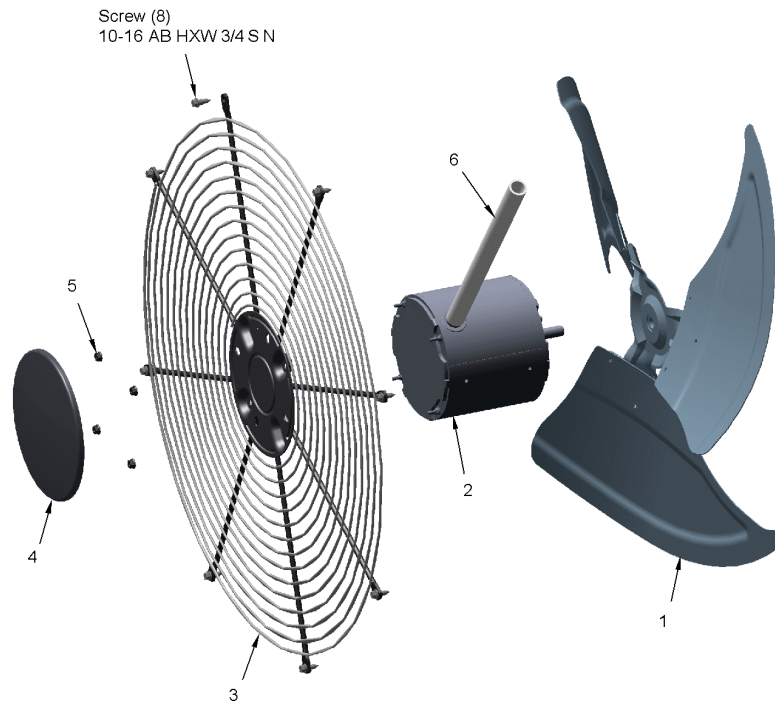
| Part No. | Reference No. | Quantity | Description |
|-----------------|----------------------|-----------------|--|
| SCR01918 | * | 14 | SCREW, 10-24 THREAD ROLL, INDENT HEX WASHER HD |
| DRV03512 | 1 | 1 | DRIVE; KIT, 6.3 KW 5T, SP |
| MOD01574 | 2 | 1 | MODULE; TO ORDER-SEE EXT NOTE |
| CNT07567 | 3 | 1 | CONTROL; VSPD AOC |
| SEN03020 | 4 | 1 | SENSOR; AMBIENT |
| PNL35703 | 5 | 1 | PANEL; 4.4 CONTROL PANEL-VS |
| RAL01209 | 6 | 1 | RAIL; DRIVE |

| Part No. | Reference No. | Quantity | Description |
|-------------|---------------|----------|----------------|
| 000005441~P | * | | FAN PARTS LIST |

FAN

75012081

REV.
A



This is a typical illustration. The unit in the field may not appear exactly as shown.

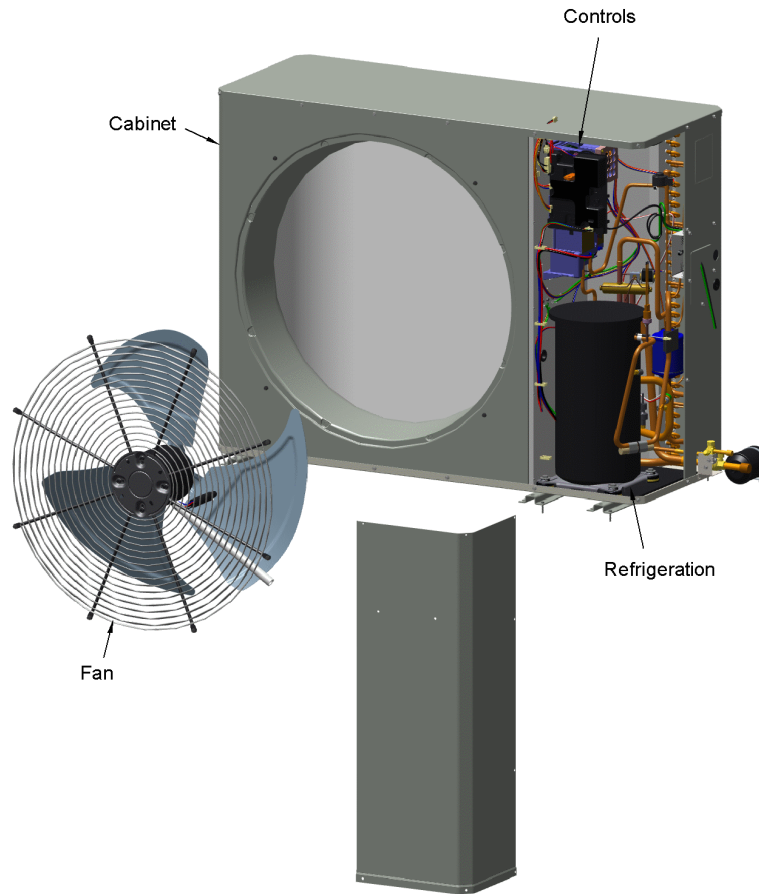
| Part No. | Reference No. | Quantity | Description |
|-----------------|----------------------|-----------------|--|
| FAN04368 | 1 | 1 | FAN, 3 SWEPT BLADE, 27.5" DIA, 26 DEG PITCH, 0.50" BORE, CCW, ALUMINUM |
| MOT18657 | 2 | 1 | MOTOR; 1/2 HP, 200-1200 RPM, 245-385V, 3 PH, BALL BEARINGS, 48 FRAME, INCLUDES HARNESS |
| GRL01348 | 3 | 1 | GRILLE; FAN, 29 IN DIA, SPIRAL WIRE, BASALT GREY |
| COV03250 | 4 | 1 | COVER; MOTOR, 6.86 DIA |
| NUT00845 | 5 | 4 | NUT; FLANGE NIBBED |
| GRD01633 | 6 | 1 | GUARD; TROUGH-LEAD |

| Part No. | Reference No. | Quantity | Description |
|-------------|---------------|----------|--------------------------|
| 000005414~P | * | | GENERAL ASSEMBLY GRAPHIC |

XV19 TruComfort Low Profile Heat Pump

75012699

RP
A



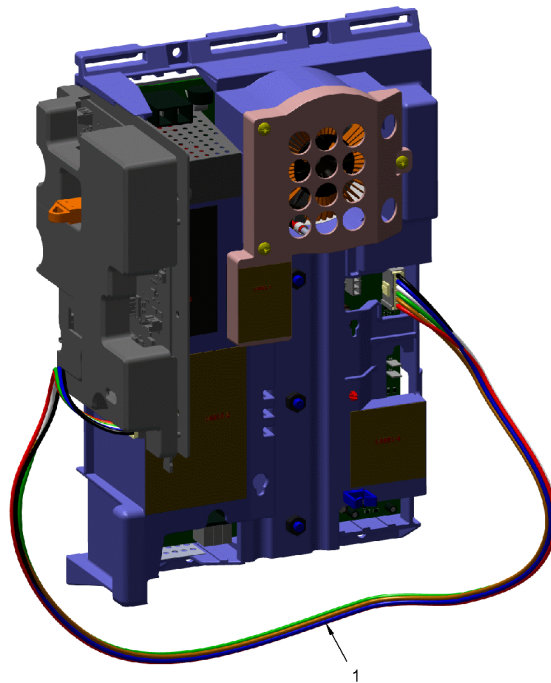
This is a typical illustration. The unit in the field may not appear exactly as shown.

| Part No. | Reference No. | Quantity | Description |
|-------------|---------------|----------|--------------------------------------|
| 000005443~P | * | | HARNESS-AOC/MOC INTERFACE PARTS LIST |

HARNESS - AOC/MOC INTERFACE

75012727

RP
A



This is a typical illustration. The unit in the field may not appear exactly as shown.

Parts List Number :0000090803

Model Number :4TWL9060A1000AB

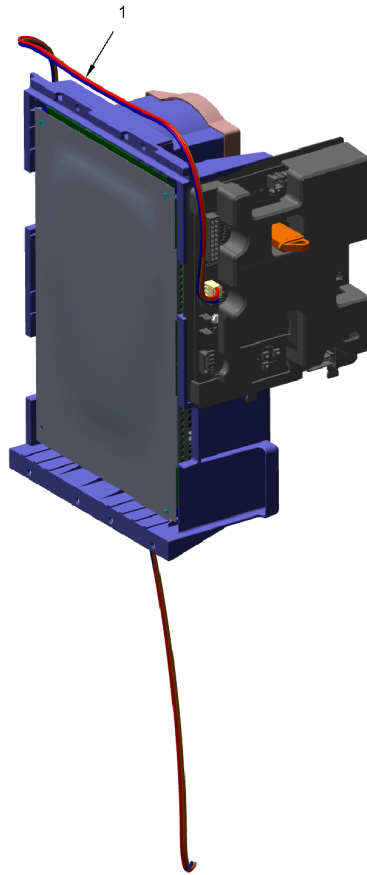
| Part No. | Reference No. | Quantity | Description |
|----------|---------------|----------|---|
| WIR09251 | | 1 | WIRE; HARNESS, AOC/MOC INTERFACE, 28 IN LENGTH, (2) 6 PIN PLUGS |

| Part No. | Reference No. | Quantity | Description |
|-------------|---------------|----------|------------------------------|
| 000005424~P | * | | HARNESS-CL2 FIELD PARTS LIST |

HARNESS - CL2 FIELD

75012728

RP
A



This is a typical illustration. The unit in the field may not appear exactly as shown.

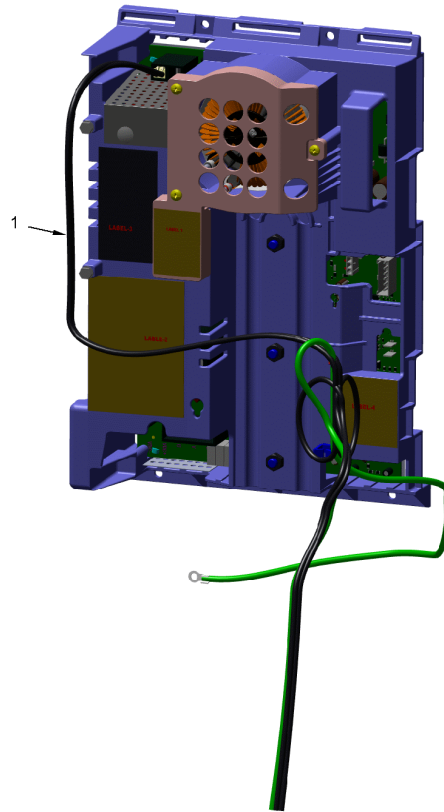
| Part No. | Reference No. | Quantity | Description |
|----------|---------------|----------|--|
| WIR09252 | 1 | 1 | WIRE; HARNESS, CL2-FIELD, BR,RD,BL WIRES, 3 PIN PLUG, 46 IN LENGTH |

| Part No. | Reference No. | Quantity | Description |
|-------------|---------------|----------|--------------------------------|
| 000005444~P | * | | HARNESS-POWER INPUT PARTS LIST |

HARNESS - POWER INPUT

75012725

RP
A



To Power Supply

This is a typical illustration. The unit in the field may not appear exactly as shown.

Parts List Number :0000090803

Model Number :4TWL9060A1000AB

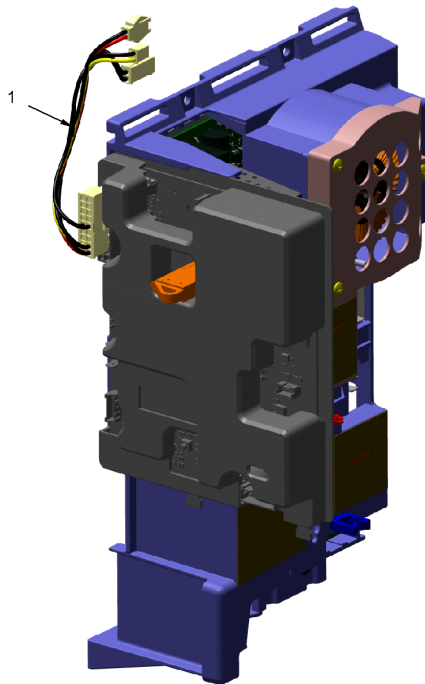
| Part No. | Reference No. | Quantity | Description |
|-----------------|----------------------|-----------------|---|
| WIR09254 | 1 | 1 | WIRE; POWER - HV, MOLEX PLUG, 2 WIRES: BL/BK & BRN/RD, 30 IN LENGTH |

| Part No. | Reference No. | Quantity | Description |
|-------------|---------------|----------|----------------------------|
| 000005445~P | * | | HARNESS-SENSORS PARTS LIST |

HARNESS - SENSORS

75012726

RP
A



This is a typical illustration. The unit in the field may not appear exactly as shown.

| Part No. | Reference No. | Quantity | Description |
|----------|---------------|----------|--|
| WIR09253 | 1 | 1 | WIRE; SENSORS, 12 WIRES, 18 PIN PLUG, 5 IN LENGTH, TO CBS, DTS, ODS, STS, SP-TRD |

| Part No. | Reference No. | Quantity | Description |
|-------------|---------------|----------|--------------------------|
| 000005415~P | * | | MODEL NUMBER DESCRIPTION |

MODEL NUMBER DESCRIPTION

75005586

REV
D

OUTDOOR UNITS

Example Model Number:

4 TWV 00 3 6 A 1 0 0 0 A A
1 - - - 5 - - - 10 - - - 15

Digit 1 – Refrigerant Type

2 = R-22
4 = R-410A

Digit 2 – Trane

Digit 3 – Product Type

W = Split Heat Pump
T = Split Cooling

Digit 4 – Product Family

V = Variable Speed
Z = Leadership - Two Stage
X = Leadership
R = Replacement/Retail
M or B = Basic
A = Light Commercial
L = Side Discharge

Digit 5 – Family SEER

3 = 13 7 = 17
4 = 14 9 = 19
5 = 15 9 = 19
6 = 16 0 = 20

Digits 6 – Split System Connections 1-6 Tons

0 = Brazed

Digits 7,8 – Nominal Capacity in 000s BTUs

Digit 9 – Major Design Modifications

Digit 10 – Power Supply

1 = 200-230/1/60 or 208-230/1/60
3 = 200-230/3/60
4 = 460/3/60

Digit 11,12,13 – Secondary Function

Digit 14 – Minor Design Modifications

Digit 15 – Unit Parts Identifier

| Part No. | Reference No. | Quantity | Description |
|-------------|---------------|----------|---------------------------|
| 000005447~P | * | | OPTIONAL ACCESSORIES LIST |

| Part No. | Reference No. | Quantity | Description |
|-----------------|----------------------|-----------------|--|
| BAYISLT101 | * | 1 | KIT; ISOLATOR (BAYISLT101) (CONTAINS A QTY OF 5 ISOLATORS) |
| BAYLEGS004 | * | 1 | KIT; SNOW LEGS, CONTAINS (4) 4" MOUNTING LEGS |
| BAYLEGS007 | * | 1 | KIT; SNOW LEGS, CONTAINS (4) 7" MOUNTING LEGS |
| BAYWIND101 | * | 1 | WIND BAFFLE ASM |
| BRK05033 | * | 1 | BRACKET; LARGE WALL BRACKET WITH RAIL AND 3 ARMS UP TO 350 LBS |
| PAI00309 | * | 1 | PAINT; DARK BROWN, 12 OZ SPRAY CAN, HERESITE AIR DRY PHENOLIC COATING, VR-554T |

Parts List Number :0000090803

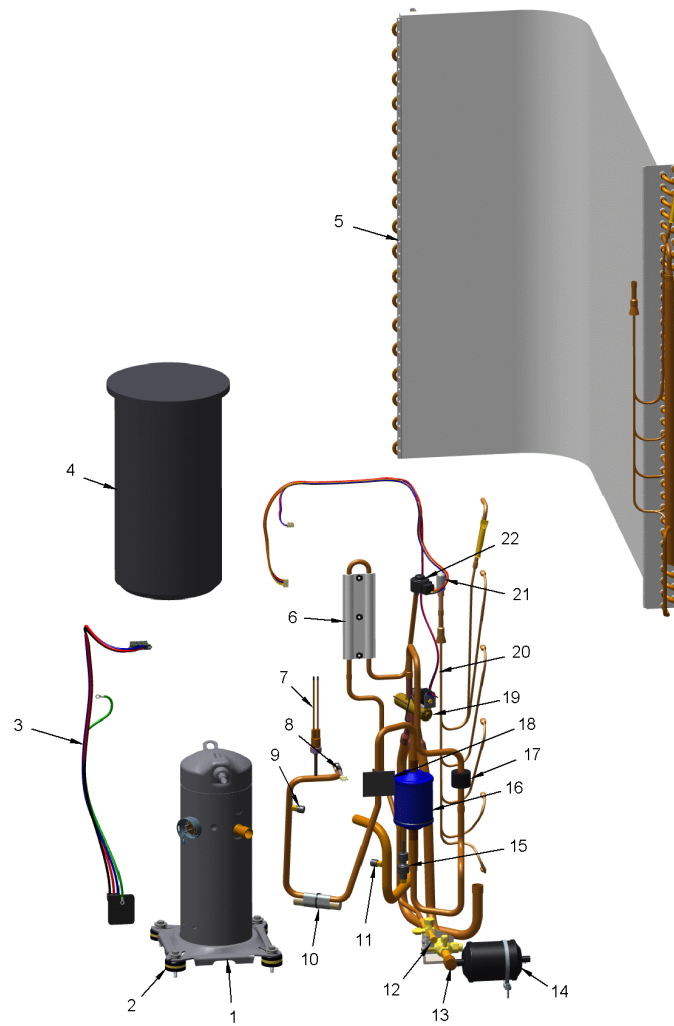
Model Number :4TWL9060A1000AB

| Part No. | Reference No. | Quantity | Description |
|-------------|---------------|----------|--------------------------|
| 000005450~P | * | | REFRIGERATION PARTS LIST |

REFRIGERATION

75012698

RP
A



This is a typical illustration. The unit in the field may not appear exactly as shown.

| Part No. | Reference No. | Quantity | Description |
|----------|---------------|----------|--|
| SEN03002 | * | 1 | SENSOR; SUCTION LINE |
| SEN03005 | * | 1 | SENSOR; COIL |
| COM11949 | 1 | 1 | COMPRESSOR; SCROLL; DRIVE CONTROLLED; CAA041C1CPA; 3.5 TON; 208V-60-1; R410-A; SUCTION 3/4; DISCHARGE 1/2 |
| SCR01914 | 2 | 4 | SCREW, ASSEMBLY COMPRESSOR, 5/16-12 TYPE B, W/WASHER & SLEEVE |
| PLU01326 | 3 | 1 | PLUG; SCROLL COMPRESSOR, 12 AWG, BK,RD,BL WIRES, 45 IN LENGTH |
| ATT00520 | 4 | 1 | ATTENUATOR; NOISE ENCLOSURE |
| COL28858 | 5 | 1 | COIL; OUTDOOR, PLATE FIN |
| CMP01596 | 6 | 1 | CLAMP; CLAMPING PLATE |
| SWT04180 | 7 | 1 | SWITCH; HIGH PRESSURE, BRAZED, SPST, OPEN AT 650 PSIG, CLOSE AT 500 PSIG, 32 IN WHITE YELLOW LEADS |
| SEN02713 | 8 | 1 | SENSOR; DISCHARGE |
| BOD00114 | 9a | 1 | BODY; VALVE, BRASS, 7/16 HEX, 7/16 -20 UNF-2A |
| CAP00455 | 9b | 1 | CAP; HUB, 7/16-20 STRAIGHT |
| COR00103 | 9c | 1 | CORE; VALVE, .79 LENGTH, .206-36 UNS-1 MOD. THD |
| BAR00178 | 10a | 1 | BAR; STEEL, 3.70 X .75 DIA |
| CLP00200 | 10b | 2 | CLIP; BULB |
| BOD00114 | 11a | 1 | BODY; VALVE, BRASS, 7/16 HEX, 7/16 -20 UNF-2A |
| CAP00455 | 11b | 1 | CAP; HUB, 7/16-20 STRAIGHT |
| COR00103 | 11c | 1 | CORE; VALVE, .79 LENGTH, .206-36 UNS-1 MOD. THD |
| VAL09293 | 12a | 1 | VALVE, SERVICE LIQUID, .38 OD X .38 OD, VALVE ASSY |
| CAP01336 | 12b | 1 | CAP; SERVICE LIQUID VALVE, BRASS, 0.75 OD X 0.57 ID X 11/16- 28UN-2B |
| VAL11774 | 13a | 1 | VALVE; SERVICE GAS ASSEMBLY, 0.88 ODS X 0.88 ODS, WITH 0.25 SAE SERVICE PORT SERVICE |
| CAP01412 | 13b | 1 | CAP; SERVICE VALVE, BRASS, 1.00 OD X 0.57 ID X M18 X 1-6H |
| DHY01452 | 14 | 1 | DRIER; BI-FLOW; SERVICE FIRST; 16 CU. IN; DCB163S, 3/8 ODF CONNECTIONS; 5.7 TON CAPACITY; APPROVED FOR MINERAL OIL AND POE OIL REFRIGERANTS; MANUFACTU |
| TDR00732 | 15a | 1 | TRANSDUCER; PRESSURE, SUCTION, 0.5 VDC AT 14.7 PSIA, 4.5 VDC AT 400 PSIA, 1/4" SAE FEMALE FLARE WITH DEFLATOR, 7/16-20 UNF-2B 5/8 ACROSS FLATS, 48 IN |
| BOD00114 | 15b | 1 | BODY; VALVE, BRASS, 7/16 HEX, 7/16 -20 UNF-2A |
| MFL00816 | 16 | 1 | MUFFLER; 1/2 ODF CONNECTION, 6.45 X 4.55, (PAINTED DARK BLUE) |
| GRM01080 | 17 | 1 | GROMMET; RUBBER BLOCK |
| SPC00388 | 18 | 1 | SPACER; TUBE |
| VAL11214 | 19 | 1 | VALVE; SWITCHOVER, 6 TON, 0.875 IDF X 0.625 OD, W/ 12 DCV SOLENOID COIL |
| WIR07180 | 20 | 1 | WIRE; HARNESS-SWITCHOVER VALVE SOLENOID, (2) 2-PIN CONNECTORS, RED & BLUE WIRES, 35 INCH LENGTH, TO J17 |
| VAL11171 | 21 | 1 | VALVE; EEV, 2.0 MM, FOR 5 TON |
| COL15628 | 22 | 1 | COIL; MOTOR ASM-EEV, STATOR (SC) |