

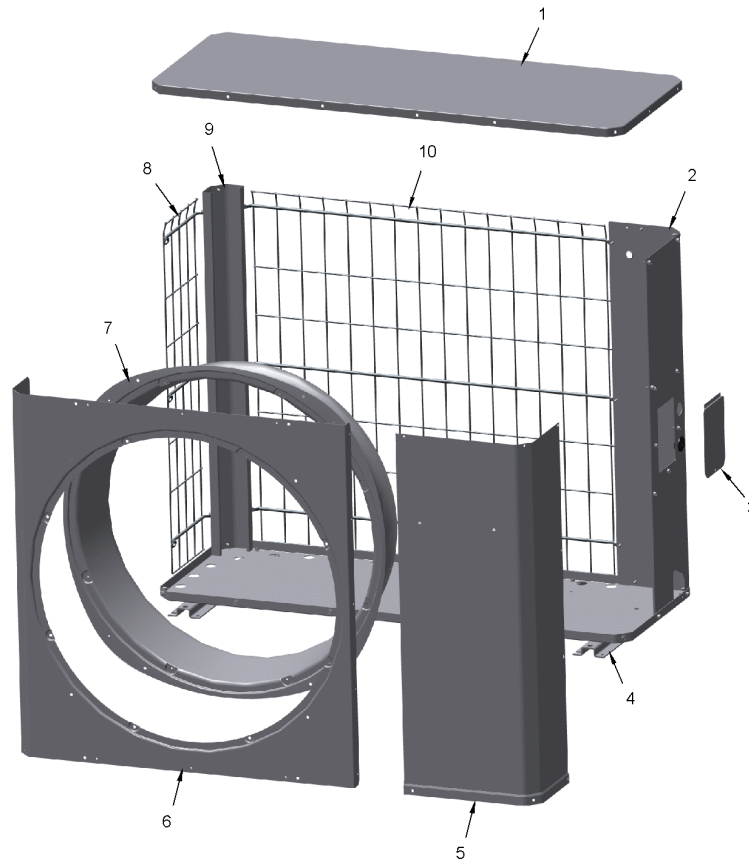
<b>Part No.</b>	<b>Reference No.</b>	<b>Quantity</b>	<b>Description</b>
0000090962~S	*		CABINET
0000206235~S	*		COMPRESSOR
0000090963~S	*		CONTROLS
0000090964~S	*		FAN
0000090961~S	*		GENERAL ASSEMBLY GRAPHIC
0000090971~S	*		MODEL NUMBER DESCRIPTION
0000090968~S	*		REFRIGERATION

Part No.	Reference No.	Quantity	Description
000005417~P	*		CABINET PARTS LIST

CABINET

75012536

RP  
A



This is a typical illustration. The unit in the field may not appear exactly as shown.

<b>Part No.</b>	<b>Reference No.</b>	<b>Quantity</b>	<b>Description</b>
PAI00246	*	1	PAINT; SPRAY, TARPAULIN GRAY (SHIPPING UOM 12 OZ HAZ)
COV05328	1	1	COVER; TOP, 47.00 X 17.50
PNL35591	2	1	PANEL; SERVICE 4.4 TR
DOR04389	3	1	DOOR; SERVICE PANEL, 5.75 X 4.25
RAL01194	4	3	RAIL; BASE, 20.50 X 2.65 X 0.65
PNL34722	5	1	PANEL; ACCESS, 41.81 H
PNL35669	6	1	PANEL; FRONT, 34.62 X 42.00 X 29.70 DIA OPENING
ORF02011	7	1	ORIFICE; BASE, 39.5 ID DIA
GRL02169	8	1	GRILLE; WIRE ZLL SIDE 4.4
RAL01205	9	1	RAIL; POST-CORNER 4.4 TR
GRL02165	10	1	GRILLE; WIRE ZLL BACK 4.4

Part No.	Reference No.	Quantity	Description
0000053028~P	*		SCROLL COMPRESSOR PARTS LIST

Parts List Number :0000090803

Model Number :4TWL9048A1000BA

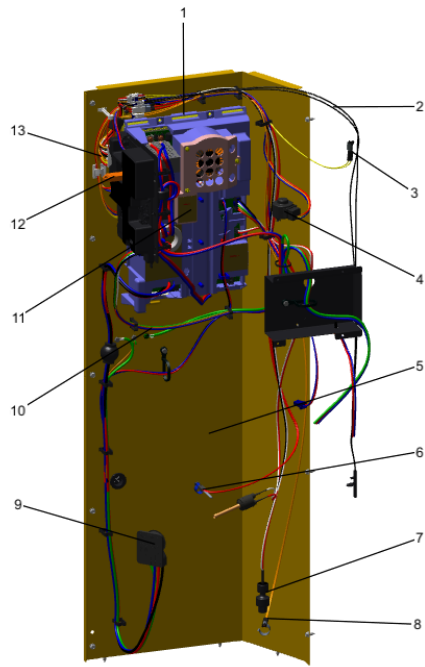
Part No.	Reference No.	Quantity	Description
COM11949	1	1	COMPRESSOR; SCROLL; DRIVE CONTROLLED; CAA041C1CPA; 3.5 TON; 208V-60-1; R410-A; SUCTION 3/4; DISCHARGE 1/2

CONTROLS

Parts List Number :0000090803

Model Number :4TWL9048A1000BA

Part No.	Reference No.	Quantity	Description
0000052707~P	*		HEAT PUMP CONTROLS PARTS LIST



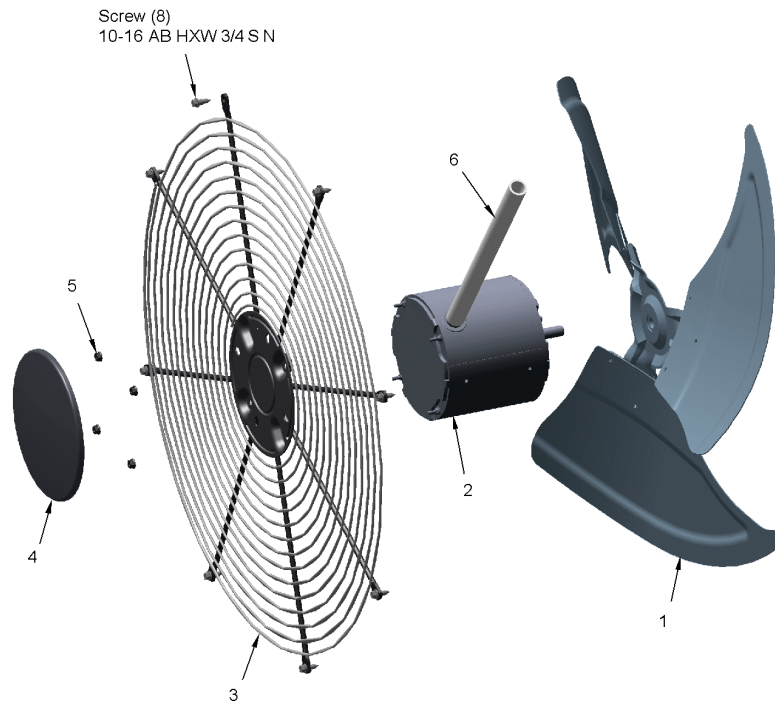
Part No.	Reference No.	Quantity	Description
LUG00012		1	LUG, GROUND
SCR01918		14	SCREW, 10-24 THREAD ROLL, INDENT HEX WASHER HD
SCR02010		12	SCREW; 12-18 AB HXW 1/2 SN
SCR02054		12	SCREW; 12-18 AB HXW 1/2 SN
SPC00512		1	SPACER; TUBING
TIE00026		1	TIE; CABLE, 8-1/2IN.
WIR09252		1	WIRE; HARNESS, CL2-FIELD, BR,RD,BL WIRES, 3 PIN PLUG, 46 IN LENGTH
WIR10523		1	WIRE; HARNESS-LSOV ASM
RAL01209	1	1	RAIL; DRIVE
SEN03020	2	1	SENSOR; AMBIENT
SEN03005	3	1	SENSOR; COIL
COL15628	4	1	COIL; MOTOR ASM-EEV, STATOR (SC)
PNL35703	5	1	PANEL; 4.4 CONTROL PANEL-VS
SEN02713	6	1	SENSOR; DISCHARGE
TDR00732	7	1	TRANSDUCER; PRESSURE, SUCTION, 0.5 VDC AT 14.7 PSIA, 4.5 VDC AT 400 PSIA, 1/4" SAE FEMALE FLARE WITH DEFLATOR, 7/16-20 UNF-2B 5/8 ACROSS FLATS, 48 IN
SEN03002	8	1	SENSOR; SUCTION LINE
PLU01326	9	1	PLUG; SCROLL COMPRESSOR, 12 AWG, BK,RD,BL WIRES, 45 IN LENGTH
WIR09251	10	1	WIRE; HARNESS, AOC/MOC INTERFACE, 28 IN LENGTH, (2) 6 PIN PLUGS
MOD01574	12	1	MODULE; TO ORDER-SEE EXT NOTE
WIR09253	13	1	WIRE; SENSORS, 12 WIRES, 18 PIN PLUG, 5 IN LENGTH, TO CBS, DTS, ODS, STS, SP-TRD

Part No.	Reference No.	Quantity	Description
000005441~P	*		FAN PARTS LIST

FAN

75012081

REV.  
A



This is a typical illustration. The unit in the field may not appear exactly as shown.

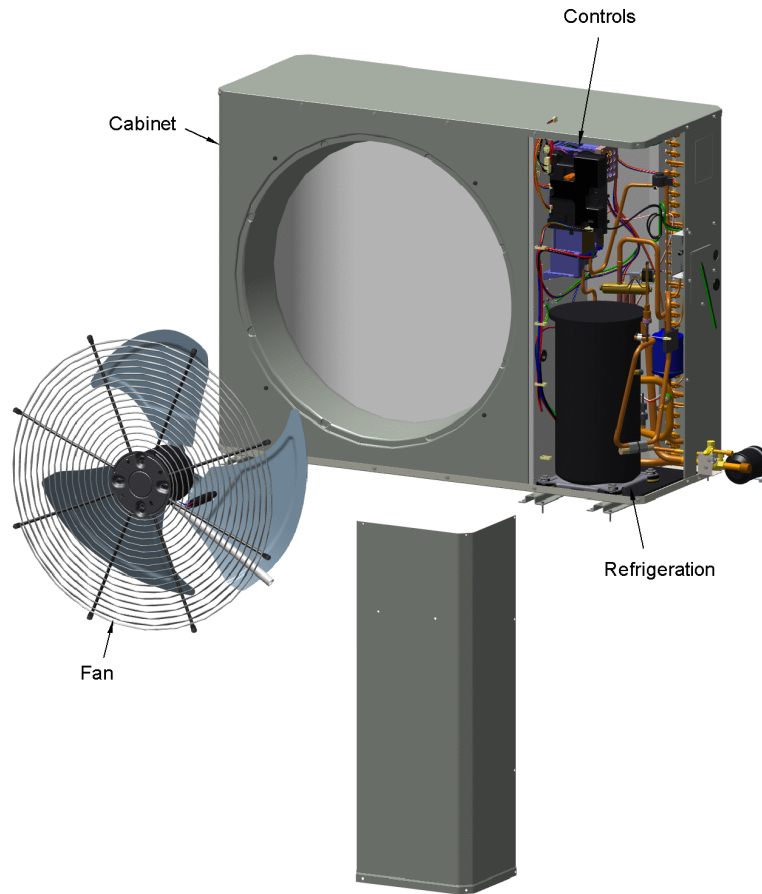
Part No.	Reference No.	Quantity	Description
FAN04368	1	1	FAN, 3 SWEPT BLADE, 27.5" DIA, 26 DEG PITCH, 0.50" BORE, CCW, ALUMINUM
MOT18657	2	1	MOTOR; 1/2 HP, 200-1200 RPM, 245-385V, 3 PH, BALL BEARINGS, 48 FRAME, INCLUDES HARNESS
GRL01348	3	1	GRILLE; FAN, 29 IN DIA, SPIRAL WIRE, BASALT GREY
COV03250	4	1	COVER; MOTOR, 6.86 DIA
NUT00845	5	4	NUT; FLANGE NIBBED
GRD01633	6	1	GUARD; TROUGH-LEAD

Part No.	Reference No.	Quantity	Description
000005414~P	*		GENERAL ASSEMBLY GRAPHIC

XV19 TruComfort Low Profile Heat Pump

75012699

RP  
A



This is a typical illustration. The unit in the field may not appear exactly as shown.

Part No.	Reference No.	Quantity	Description
000005415~P	*		MODEL NUMBER DESCRIPTION

MODEL NUMBER DESCRIPTION

75005586

REV  
D

OUTDOOR UNITS

*Example Model Number:*

**4 TWV 00 3 6 A 1 0 0 0 A A**  
1 - - - 5 - - - 10 - - - 15

**Digit 1 – Refrigerant Type**

2 = R-22  
4 = R-410A

**Digit 2 – Trane**

**Digit 3 – Product Type**

W = Split Heat Pump  
T = Split Cooling

**Digit 4 – Product Family**

V = Variable Speed  
Z = Leadership - Two Stage  
X = Leadership  
R = Replacement/Retail  
M or B = Basic  
A = Light Commercial  
L = Side Discharge

**Digit 5 – Family SEER**

3 = 13      7 = 17  
4 = 14      9 = 19  
5 = 15      9 = 19  
6 = 16      0 = 20

**Digits 6 – Split System Connections 1-6 Tons**

0 = Brazed

**Digits 7,8 – Nominal Capacity in 000s BTUs**

**Digit 9 – Major Design Modifications**

**Digit 10 – Power Supply**

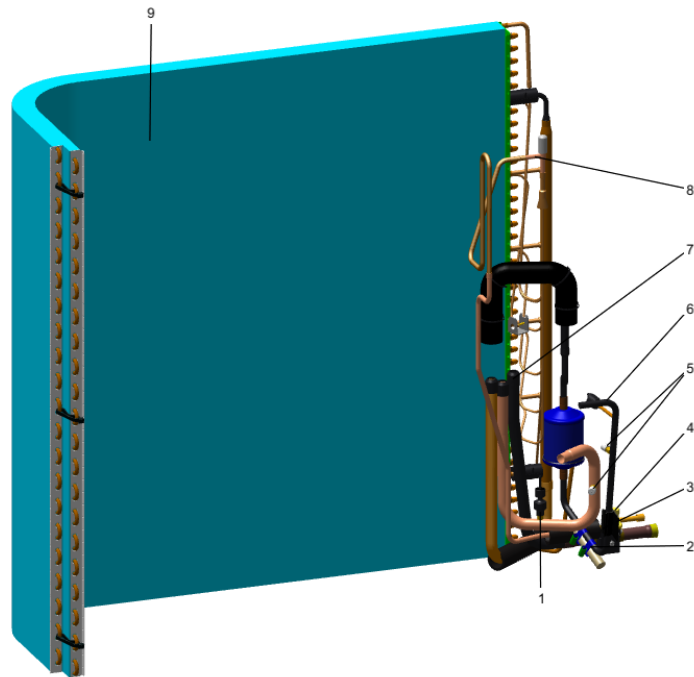
1 = 200-230/1/60 or 208-230/1/60  
3 = 200-230/3/60  
4 = 460/3/60

**Digit 11,12,13 – Secondary Function**

**Digit 14 – Minor Design Modifications**

**Digit 15 – Unit Parts Identifier**

Part No.	Reference No.	Quantity	Description
0000042196~P	*		REFRIGERATION PARTS LIST



Part No.	Reference No.	Quantity	Description
COM11949	*	1	COMPRESSOR; SCROLL; DRIVE CONTROLLED; CAA041C1CPA; 3.5 TON; 208V-60-1; R410-A; SUCTION 3/4; DISCHARGE 1/2
PAI00246	*	0	PAINT; SPRAY, TARPAULIN GRAY (SHIPPING UOM 12 OZ HAZ)
PLU00418	*	0	PLUG; TUBE
PLU00424	*	0	PLUG;TUBE
SCR02010	*	5	SCREW; 12-18 AB HXW 1/2 SN
SCR02054	*	5	SCREW; 12-18 AB HXW 1/2 SN
SPC00388	*	1	SPACER; TUBE
TIE00023	*	6	TIE;CABLE, 8.00IN.
VAL20231	*	1	VALVE; SER GAS O (14-14-14)
VAL20722	*	1	VALVE-SER LIQ O(06-06), A.8
X159859G01	*	1	COMPRESSOR MTG-SCROLL
COR00103	1	3	CORE; VALVE, .79 LENGTH, .206-36 UNS-1 MOD. THD
BAR00178	2	1	BAR; STEEL, 3.70 X .75 DIA
CMP01450	2a	2	CLAMP; HOSE, 11/16 - 1-1/4, 1/2 W, 5/16 HEX SCREW, STAINLESS STEEL
CAP01412	3	1	CAP; SERVICE VALVE, BRASS, 1.00 OD X 0.57 ID X M18 X 1-6H
CAP01336	4	1	CAP; SERVICE LIQUID VALVE, BRASS, 0.75 OD X 0.57 ID X 11/16-28UN-2B
CAP00455	5	2	CAP; HUB, 7/16-20 STRAIGHT
SWT04180	6	1	SWITCH; HIGH PRESSURE, BRAZED, SPST, OPEN AT 650 PSIG, CLOSE AT 500 PSIG, 32 IN WHITE YELLOW LEADS
VAL11214	7	1	VALVE; SWITCHOVER, 6 TON, 0.875 IDF X 0.625 OD, W/ 12 DCV SOLENOID COIL
VAL11171	8	1	VALVE; EEV, 2.0 MM, FOR 5 TON
COL28858	9	0	COIL; OUTDOOR, PLATE FIN