

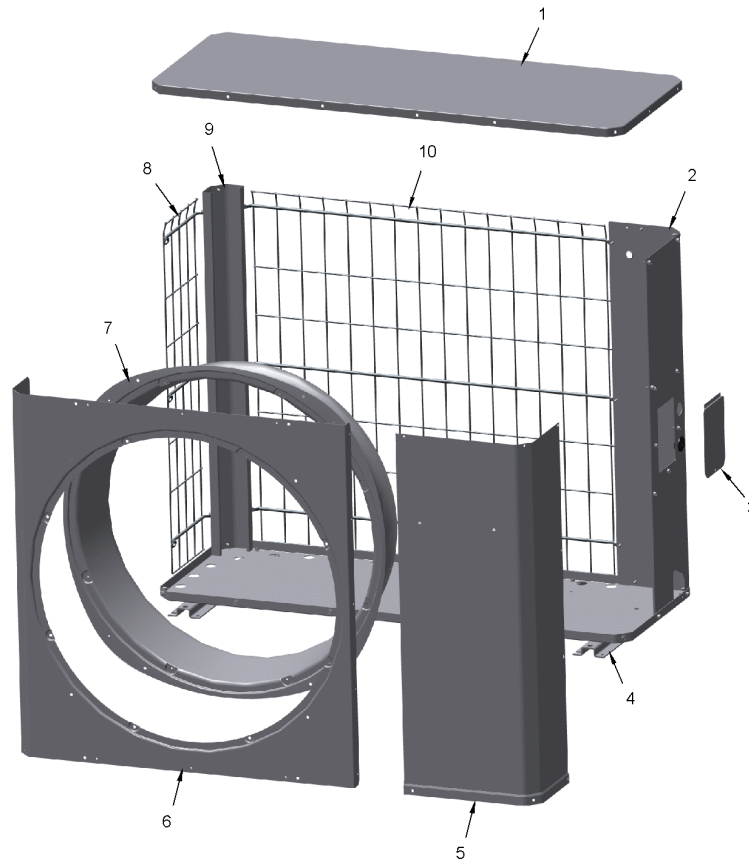
<b>Part No.</b>	<b>Reference No.</b>	<b>Quantity</b>	<b>Description</b>
0000090962~S	*		CABINET
0000206235~S	*		COMPRESSOR
0000090963~S	*		CONTROLS
0000090964~S	*		FAN
0000214004~S	*		FILTER DRIER
0000090961~S	*		GENERAL ASSEMBLY GRAPHIC
0000090971~S	*		MODEL NUMBER DESCRIPTION

Part No.	Reference No.	Quantity	Description
0000041668~P	*		CABINET PARTS LIST

CABINET

75012536

RP  
A



This is a typical illustration. The unit in the field may not appear exactly as shown.

<b>Part No.</b>	<b>Reference No.</b>	<b>Quantity</b>	<b>Description</b>
PAI00246	*	3	PAINT; SPRAY, TARPAULIN GRAY (SHIPPING UOM 12 OZ HAZ)
PAN04334	*	1	PAN; BASE 4 ZLL TR
SCR02010	*	57	SCREW; 12-18 AB HXW 1/2 SN
SCR02054	*	57	SCREW; 12-18 AB HXW 1/2 SN
COV05328	1	1	COVER; TOP, 47.00 X 17.50
PNL35590	2	1	PANEL; SERVICE 4.3 TR
DOR04389	3	1	DOOR; SERVICE PANEL, 5.75 X 4.25
RAL01194	4	3	RAIL; BASE, 20.50 X 2.65 X 0.65
PNL34721	5	1	PANEL; ACCESS, 35.81 H
PNL35668	6	1	PANEL; FRONT, 34.62 X 36.00 X 29.70 DIA OPENING
ORF02011	7	1	ORIFICE; BASE, 39.5 ID DIA
GRL02168	8	1	GRILLE; WIRE ZLL SIDE 4.3
RAL01204	9	1	RAIL; POST-CORNER 3.3/4.3 TR
GRL02164	10	1	GRILLE; WIRE ZLL BACK 4.3

Part No.	Reference No.	Quantity	Description
0000053028~P	*		SCROLL COMPRESSOR PARTS LIST

Parts List Number :0000090803

Model Number :4TWL9036A1000BA

Part No.	Reference No.	Quantity	Description
COM11949	1	1	COMPRESSOR; SCROLL; DRIVE CONTROLLED; CAA041C1CPA; 3.5 TON; 208V-60-1; R410-A; SUCTION 3/4; DISCHARGE 1/2

Parts List Number :0000090803

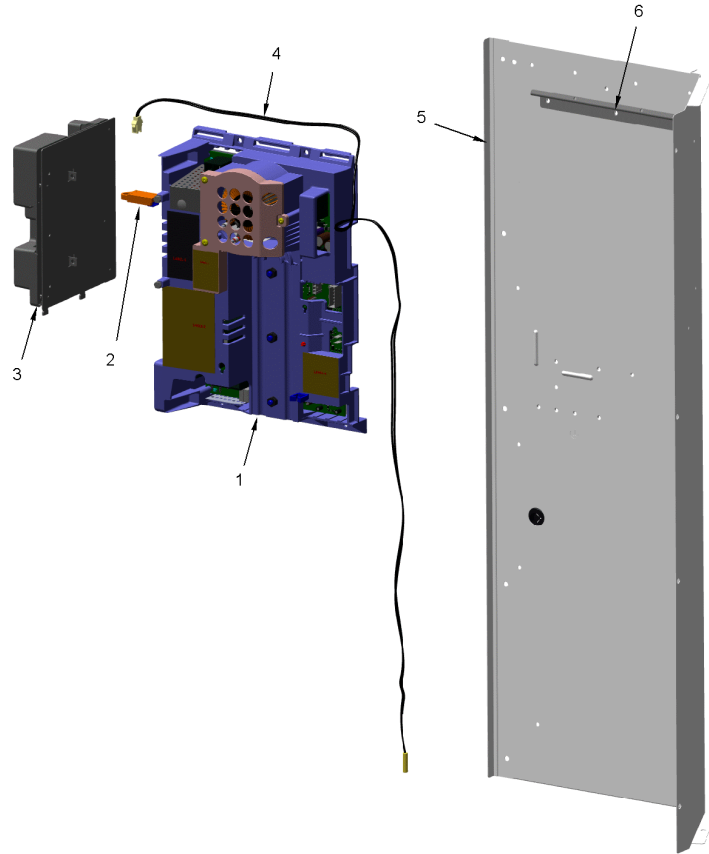
Model Number :4TWL9036A1000BA

Part No.	Reference No.	Quantity	Description
0000043006~P	*		CONTROLS PARTS LIST

CONTROL PANEL

75012700

RP  
A



This is a typical illustration. The unit in the field may not appear exactly as shown.

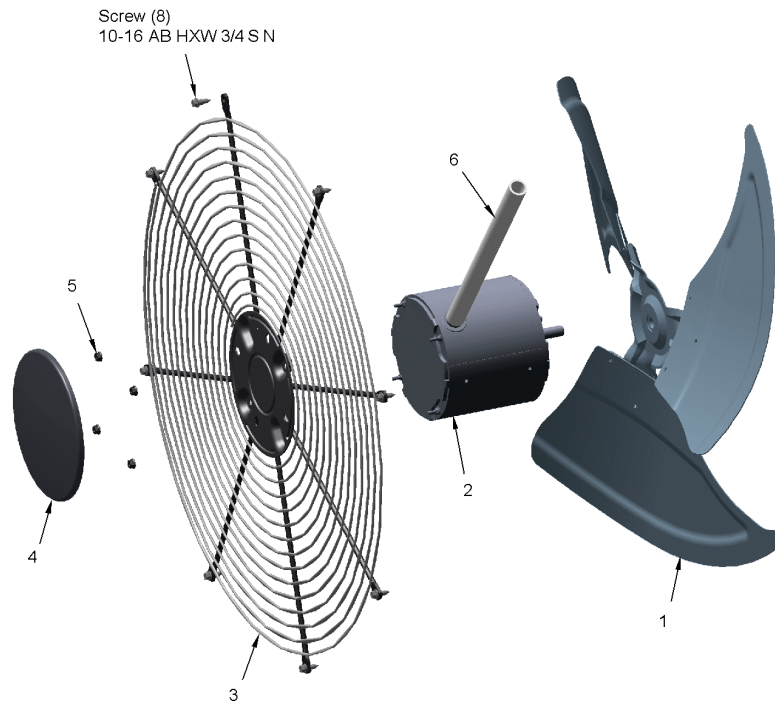
Part No.	Reference No.	Quantity	Description
COL15628	*	1	COIL; MOTOR ASM-EEV, STATOR (SC)
PLU01325	*	1	PLUG; SCROLL COMPRESSOR, 10 AWG, BK,RD,BL WIRES, 50 IN LENGTH
SCR01918	*	14	SCREW, 10-24 THREAD ROLL, INDENT HEX WASHER HD
SCR02010	*	12	SCREW; 12-18 AB HXW 1/2 SN
SCR02054	*	12	SCREW; 12-18 AB HXW 1/2 SN
SEN02713	*	1	SENSOR; DISCHARGE
SEN02919	*	1	SENSOR; SUCTION LINE, 0.750 DIA TUBE CLIP, 2 PIN CONNECTOR, 43 IN ORANGE LEADS
SEN03005	*	1	SENSOR; COIL
SPC00512	*	1	SPACER; TUBING
TDR00732	*	1	TRANSDUCER; PRESSURE, SUCTION, 0.5 VDC AT 14.7 PSIA, 4.5 VDC AT 400 PSIA, 1/4" SAE FEMALE FLARE WITH DEFLATOR, 7/16-20 UNF-2B 5/8 ACROSS FLATS, 48 IN
TIE00026	*	1	TIE; CABLE, 8-1/2IN.
WIR09251	*	1	WIRE; HARNESS, AOC/MOC INTERFACE, 28 IN LENGTH, (2) 6 PIN PLUGS
WIR09252	*	1	WIRE; HARNESS, CL2-FIELD, BR,RD,BL WIRES, 3 PIN PLUG, 46 IN LENGTH
WIR09253	*	1	WIRE; SENSORS, 12 WIRES, 18 PIN PLUG, 5 IN LENGTH, TO CBS, DTS, ODS, STS, SP-TRD
WIR10523	*	1	WIRE; HARNESS-LSOV ASM
MOD01574	2	1	MODULE; TO ORDER-SEE EXT NOTE
SEN03020	4	1	SENSOR; AMBIENT
PNL35702	5	1	PANEL; 4.3 CONTROL PANEL-VS
RAL01209	6	1	RAIL; DRIVE

Part No.	Reference No.	Quantity	Description
0000043107~P	*		FAN PARTS LIST

FAN

75012081

REV.  
A



This is a typical illustration. The unit in the field may not appear exactly as shown.

<b>Part No.</b>	<b>Reference No.</b>	<b>Quantity</b>	<b>Description</b>
FAN05903	1	1	FAN; BLADE (22 DEG 3 SWEPT)
GRL01348	3	1	GRILLE; FAN, 29 IN DIA, SPIRAL WIRE, BASALT GREY
MOT18657	4	1	MOTOR; 1/2 HP, 200-1200 RPM, 245-385V, 3 PH, BALL BEARINGS, 48 FRAME, INCLUDES HARNESS
NUT00845	5	4	NUT; FLANGE NIBBED

FILTER DRIER

Parts List Number :0000090803

Model Number :4TWL9036A1000BA

Part No.	Reference No.	Quantity	Description
0000056039~P	*		FILTER DRIER

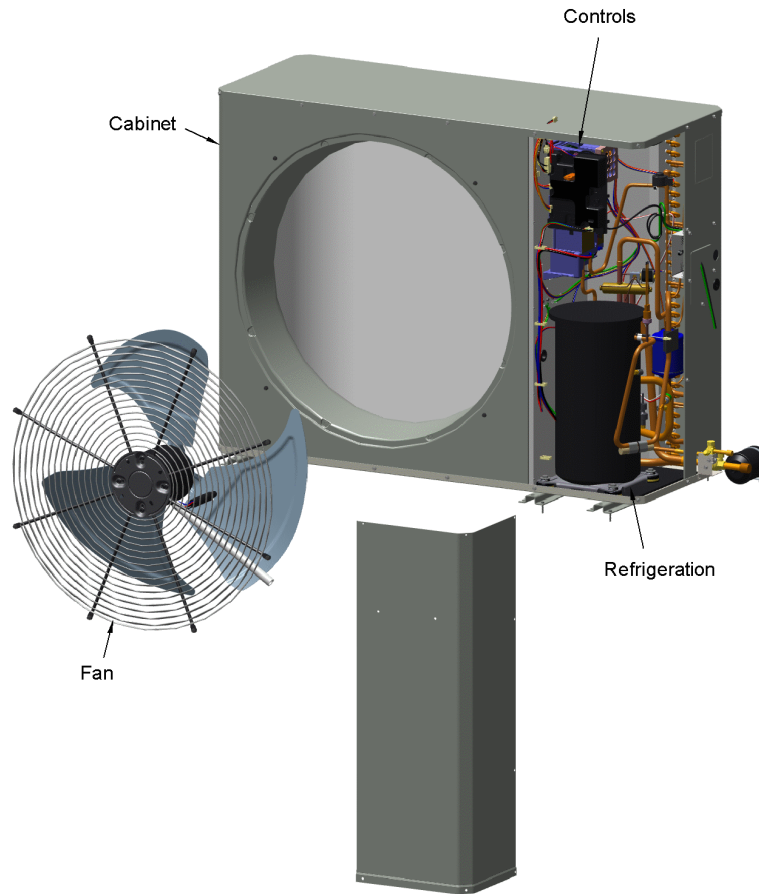
Part No.	Reference No.	Quantity	Description
DHY01665	1	1	DRIER, FILTER DRIER-WRAP ASM

Part No.	Reference No.	Quantity	Description
000005414~P	*		GENERAL ASSEMBLY GRAPHIC

XV19 TruComfort Low Profile Heat Pump

75012699

RP  
A



This is a typical illustration. The unit in the field may not appear exactly as shown.

Part No.	Reference No.	Quantity	Description
000005415~P	*		MODEL NUMBER DESCRIPTION

MODEL NUMBER DESCRIPTION

75005586

REV  
D

OUTDOOR UNITS

*Example Model Number:*

**4 TWV 00 3 6 A 1 0 0 0 A A**  
1 - - - 5 - - - 10 - - - 15

**Digit 1 – Refrigerant Type**

2 = R-22  
4 = R-410A

**Digit 2 – Trane**

**Digit 3 – Product Type**

W = Split Heat Pump  
T = Split Cooling

**Digit 4 – Product Family**

V = Variable Speed  
Z = Leadership - Two Stage  
X = Leadership  
R = Replacement/Retail  
M or B = Basic  
A = Light Commercial  
L = Side Discharge

**Digit 5 – Family SEER**

3 = 13      7 = 17  
4 = 14      9 = 19  
5 = 15      9 = 19  
6 = 16      0 = 20

**Digits 6 – Split System Connections 1-6 Tons**

0 = Brazed

**Digits 7,8 – Nominal Capacity in 000s BTUs**

**Digit 9 – Major Design Modifications**

**Digit 10 – Power Supply**

1 = 200-230/1/60 or 208-230/1/60  
3 = 200-230/3/60  
4 = 460/3/60

**Digit 11,12,13 – Secondary Function**

**Digit 14 – Minor Design Modifications**

**Digit 15 – Unit Parts Identifier**

