

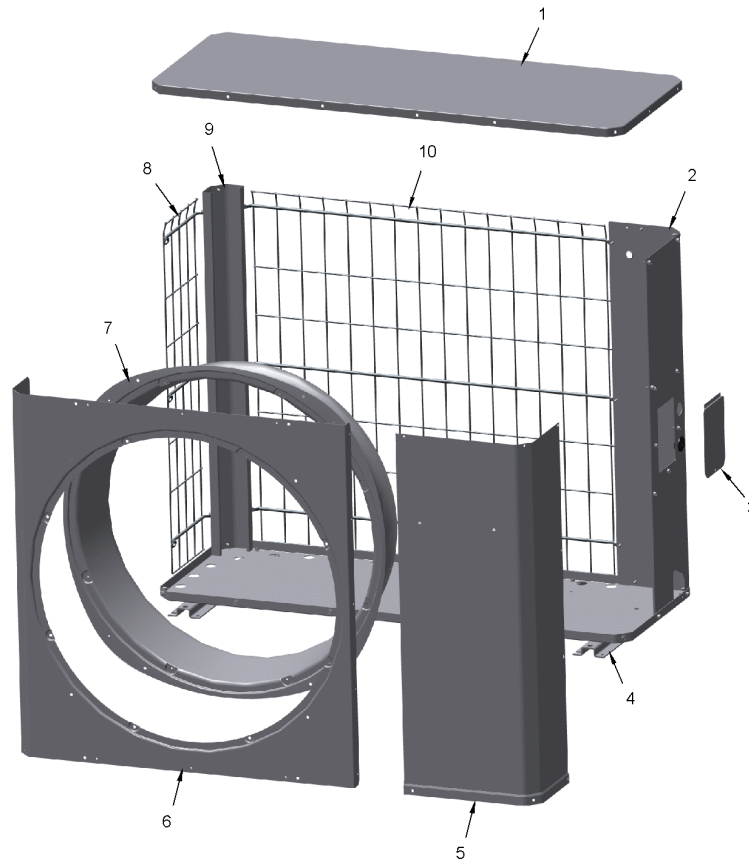
<b>Part No.</b>	<b>Reference No.</b>	<b>Quantity</b>	<b>Description</b>
0000187093~S	*		CABINET
0000187094~S	*		COMPRESSOR MOUNTING
0000187095~S	*		COMPRESSOR
0000187097~S	*		CONTROLS
0000187092~S	*		FAN
0000187099~S	*		GENERAL ASSEMBLY GRAPHIC
0000187098~S	*		MODEL NUM. GRAPHIC
0000187096~S	*		REFRIGERATION

Part No.	Reference No.	Quantity	Description
0000041668~P	*		CABINET PARTS LIST

CABINET

75012536

RP  
A



This is a typical illustration. The unit in the field may not appear exactly as shown.

<b>Part No.</b>	<b>Reference No.</b>	<b>Quantity</b>	<b>Description</b>
PAI00246	*	3	PAINT; SPRAY, TARPAULIN GRAY (SHIPPING UOM 12 OZ HAZ)
PAN04334	*	1	PAN; BASE 4 ZLL TR
SCR02010	*	57	SCREW; 12-18 AB HXW 1/2 SN
SCR02054	*	57	SCREW; 12-18 AB HXW 1/2 SN
COV05328	1	1	COVER; TOP, 47.00 X 17.50
PNL35590	2	1	PANEL; SERVICE 4.3 TR
DOR04389	3	1	DOOR; SERVICE PANEL, 5.75 X 4.25
RAL01194	4	3	RAIL; BASE, 20.50 X 2.65 X 0.65
PNL34721	5	1	PANEL; ACCESS, 35.81 H
PNL35668	6	1	PANEL; FRONT, 34.62 X 36.00 X 29.70 DIA OPENING
ORF02011	7	1	ORIFICE; BASE, 39.5 ID DIA
GRL02168	8	1	GRILLE; WIRE ZLL SIDE 4.3
RAL01204	9	1	RAIL; POST-CORNER 3.3/4.3 TR
GRL02164	10	1	GRILLE; WIRE ZLL BACK 4.3

COMPRESSOR

Parts List Number :0000187072

Model Number :4TWL5024N1000AA

Part No.	Reference No.	Quantity	Description
0000037248~P	*		SCROLL COMPRESSOR

Part No.	Reference No.	Quantity	Description
COM13736	1	1	COMPRESSOR; LCA025C1CPA S

Part No.	Reference No.	Quantity	Description
000041047~P	*		COMPRESSOR MOUNTING PARTS LIST

COMPRESSOR MOUNTING PARTS LIST

Parts List Number :0000187072

Model Number :4TWL5024N1000AA

<b>Part No.</b>	<b>Reference No.</b>	<b>Quantity</b>	<b>Description</b>
ISR00362	1	4	ISOLATOR; VIBRATION
SCR01914	2	4	SCREW, ASSEMBLY COMPRESSOR, 5/16-12 TYPE B, W/WASHER & SLEEVE

Part No.	Reference No.	Quantity	Description
0000041672~P	*		CONTROLS PARTS LIST

Part No.	Reference No.	Quantity	Description
WIR09140	1	1	WIRE; HARNESS, CONTROL PANEL, 8 PIN, TO: MS-COIL, LPCO, SOV
PLU01299	2	1	PLUG; SCROLL COMPRESSOR HARNESS, BK/BL, OR, RD WIRES, 46 IN LENGTH
TIE00007	3	1	TIE;CABLE
CNT08177	4	1	CONTROL; DEFROST
CTR00845	5	1	CONTACTOR; 30 AMP, 240/480/600V, 24V COIL, 1 POLE
SEN02908	6	1	SENSOR; COIL, 5/16 CLIP, YELLOW WIRES, 43 IN LENGTH
SRP00269	7	1	STRAP; CAPACITOR
CPT01844	8	1	CAPACITOR, RUN, 40/5 MFD, 370V, ROUND, W/O RESISTOR
SEN03021	9	1	SENSOR; AMBIENT
TIE00026	10	1	TIE; CABLE, 8-1/2IN.
THT03236	11	1	THERMOSTAT; HIGH TEMP
SCR01924	12	3	SCREW; 6-32 X .75, THREAD ROLLING SCREWS-ZINC PLATED, HEX WASHER
TER00312	13	1	TERMINAL; 8IN. TIE CABLE
SHD00387	14	1	SHIELD; MOISTURE, 10.25 X 4.00
LUG00012	15	1	LUG, GROUND
SHD00592	16	1	SHIELD; MOISTURE, 13.88 X 7.50
SPC00512	17	1	SPACER; TUBING
CON00241	18	1	CONNECTOR; WIRE
SCR01918	19	5	SCREW, 10-24 THREAD ROLL, INDENT HEX WASHER HD

Part No.	Reference No.	Quantity	Description
0000041208~P	*		FAN PARTS LIST

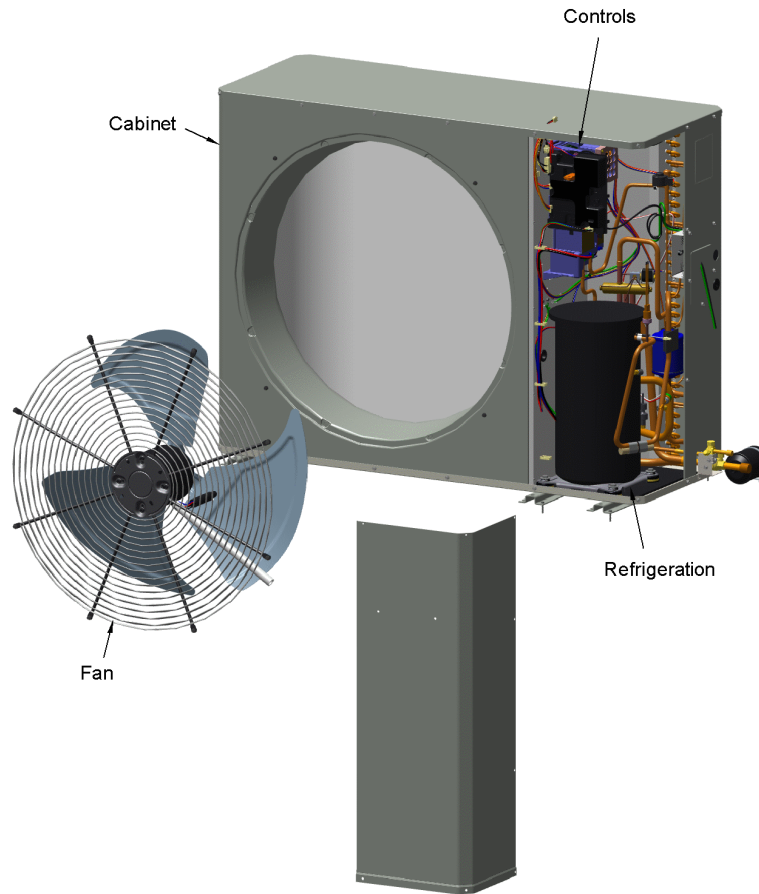
<b>Part No.</b>	<b>Reference No.</b>	<b>Quantity</b>	<b>Description</b>
GRD01633	1	1	GUARD; TROUGH-LEAD
GRL01348	2	1	GRILLE; FAN, 29 IN DIA, SPIRAL WIRE, BASALT GREY
MOT17988	3	1	MOTOR; 1/12 HP FAN MOTOR (ALUMINUM)
NUT00845	4	4	NUT; FLANGE NIBBED
FAN06039	5	1	FAN; SWEEP BLADE, 3 BLADE, ALUMINUM, 27.30 IN DIA, 19 DEG PITCH, 0.50 IN BORE, CCW, 1 SET SCREW-STEEL

Part No.	Reference No.	Quantity	Description
000005414~P	*		GENERAL ASSEMBLY GRAPHIC

XV19 TruComfort Low Profile Heat Pump

75012699

RP  
A



This is a typical illustration. The unit in the field may not appear exactly as shown.

Part No.	Reference No.	Quantity	Description
000005415~P	*		MODEL NUMBER DESCRIPTION

MODEL NUMBER DESCRIPTION

75005586

REV  
D

OUTDOOR UNITS

*Example Model Number:*

**4 TWV 00 3 6 A 1 0 0 0 A A**  
1 - - - 5 - - - 10 - - - 15

**Digit 1 – Refrigerant Type**

2 = R-22  
4 = R-410A

**Digit 2 – Trane**

**Digit 3 – Product Type**

W = Split Heat Pump  
T = Split Cooling

**Digit 4 – Product Family**

V = Variable Speed  
Z = Leadership - Two Stage  
X = Leadership  
R = Replacement/Retail  
M or B = Basic  
A = Light Commercial  
L = Side Discharge

**Digit 5 – Family SEER**

3 = 13      7 = 17  
4 = 14      9 = 19  
5 = 15      9 = 19  
6 = 16      0 = 20

**Digits 6 – Split System Connections 1-6 Tons**

0 = Brazed

**Digits 7,8 – Nominal Capacity in 000s BTUs**

**Digit 9 – Major Design Modifications**

**Digit 10 – Power Supply**

1 = 200-230/1/60 or 208-230/1/60  
3 = 200-230/3/60  
4 = 460/3/60

**Digit 11,12,13 – Secondary Function**

**Digit 14 – Minor Design Modifications**

**Digit 15 – Unit Parts Identifier**

Part No.	Reference No.	Quantity	Description
0000041670~P	*		REFRIGERANT PARTS LIST

Part No.	Reference No.	Quantity	Description
SCR02010	1	4	SCREW; 12-18 AB HXW 1/2 SN
CAP00455	2	2	CAP; HUB, 7/16-20 STRAIGHT
CAP01336	3	1	CAP; SERVICE LIQUID VALVE, BRASS, 0.75 OD X 0.57 ID X 11/16-28UN-2B
SCR02054	4	4	SCREW; 12-18 AB HXW 1/2 SN
VAL08991	5	1	VALVE; SWITCHOVER, 3 TON, .50 IDF X .75 OD, W/ 24V SOLENOID COIL
VAL19423	6	1	VALVE; TXV (HXCE-1-ZX200, 84 PSIG)
PAI00246	7	0	PAINT; SPRAY, TARPAULIN GRAY (SHIPPING UOM 12 OZ HAZ)
SWT04148	8	1	SWITCH; LOW PRESSURE BZ
VAL20681	9	1	VALVE-SER LIQ O(06-06)
PLU00417	10	0	PLUG; TUBE
COR00103	11	2	CORE; VALVE, .79 LENGTH, .206-36 UNS-1 MOD. THD
MFL00806	12	1	MUFFLER; 1/2 ODF CONNECTION (DRIER COULD BE PAINTED EITHER SMOKE GRAY OR NAVY BLUE)
SWT04140	13	1	SWITCH; HIGH PRESSURE, SPST, OPEN AT 650 PSIG, CLOSE AT 500 PSIG, 36 IN YELLOW/RED LEADS
CAP01315	14	1	CAP; SERVICE LIQUID VALVE, BRASS, 1.06 OD X 0.81 ID X 15/16-20UNEF-2B
CLP00223	15	1	CLIP; BULB
COL28849	16	0	COIL; OUTDOOR, PLATE FIN
CLP00233	17	1	CLIP; HOLDING
TIE00023	18	4	TIE;CABLE, 8.00IN.