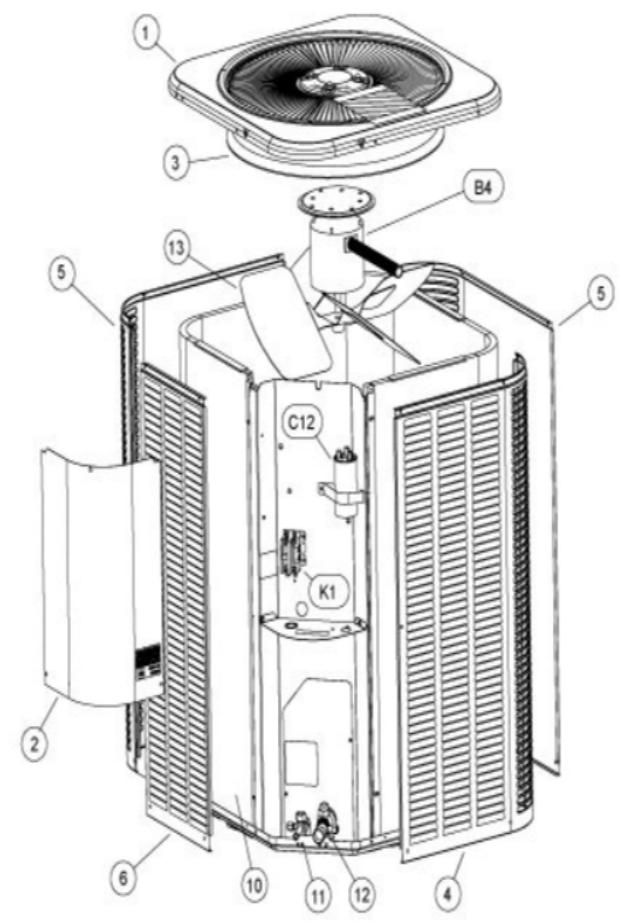


4AC14L Series



Revision Number - 2A

## CABINET PARTS

Callout	Name	Quantity	Description
	PLATE-PATCH DUCANE GRAY Cat #: 83W75 Model/Part #: 102098-02	1	PLATE-PATCH DUCANE GRAY
1	PANEL-TOP Cat #: 61W05 Model/Part #: 102419-02	1	PANEL-TOP 28 X 28, DUCANE GRAY
2	COVER-CONTROL BOX Cat #: 61W01 Model/Part #: 102072-02	1	COVER, CONTROL PANEL (DUCANE GRAY)
3	ORIFICE Cat #: 98M16 Model/Part #: 100001-01	1	ORIFICE RING (22 I.D. X 6)
4	PANEL - LOUVER (RIGHT) Cat #: 61W36 Model/Part #: 603090-04	1	PANEL - LOUVER (RIGHT)
5	PANEL - LOUVER (CENTER) Cat #: 61W41 Model/Part #: 603091-04	2	PANEL - LOUVER (CENTER)
6	PANEL - LOUVER (LEFT) Cat #: 61W46 Model/Part #: 603092-04	1	PANEL - LOUVER (LEFT)

## CONTROL PANEL PARTS

Callout	Name	Quantity	Description
C12	CAPACITOR-FAN MTR Cat #: 89M77 Model/Part #: 100335-09	1	CAPACITOR 40 + 5 MFD @ 440V ROUND
K1	CONTACTOR Cat #: 95M55 Model/Part #: 100438-01	1	"SPST, 24V"

## COOLING PARTS

Callout	Name	Quantity	Description
	DRIER Cat #: 95M52 Model/Part #: 100214-03	1	DRIER: R410A - ONE WAY - 55G

<b>Callout</b>	<b>Name</b>	<b>Quantity</b>	<b>Description</b>
	100484-15 Kit-RFC (.065) Cat #: 10W99 Model/Part #: 10W99	1	100484-15 Kit-RFC (.065)
	HARNESS-COMPRESSOR Cat #: 15M35 Model/Part #: 15M3501	1	COMPRESSOR- MOLDED PLUG
	MOUNT PKG-COMP Cat #: 54M63 Model/Part #: LB-106528	1	MOUNT PKG-COMP
10	COIL-OUTDOOR Cat #: 36W54 Model/Part #: LB-87170DP	1	ASSY-REPAIR PART (COIL)
11	VALVE-SERVICE Cat #: 10W32 Model/Part #: 100432-01	1	VALVE SERVICE 3/8
12	VALVE-SERVICE Cat #: 10W33 Model/Part #: 100432-02	1	VALVE SERVICE 3/4
13	FAN Cat #: 43W37 Model/Part #: 100060-23	1	FAN 22 INCH 3 BLADE 26 PITCH CCW
B1	COMPRESSOR ZP24K5E-PFV Cat #: 27W16 Model/Part #: 100040-03	1	COMPRESSOR ZP24K5E-PFV-130
B4	MOTOR-FAN Cat #: 63W25 Model/Part #: 100483-27	1	MOTOR-FAN 1/6 HP 208/230V 60HZ
S4	SWITCH-HI PRESS-MANUAL Cat #: 42W41 Model/Part #: 100103-03	1	SWITCH-PRESSURE (HIGH-MANUAL)

**Note:**

There are no technical notes for this product.