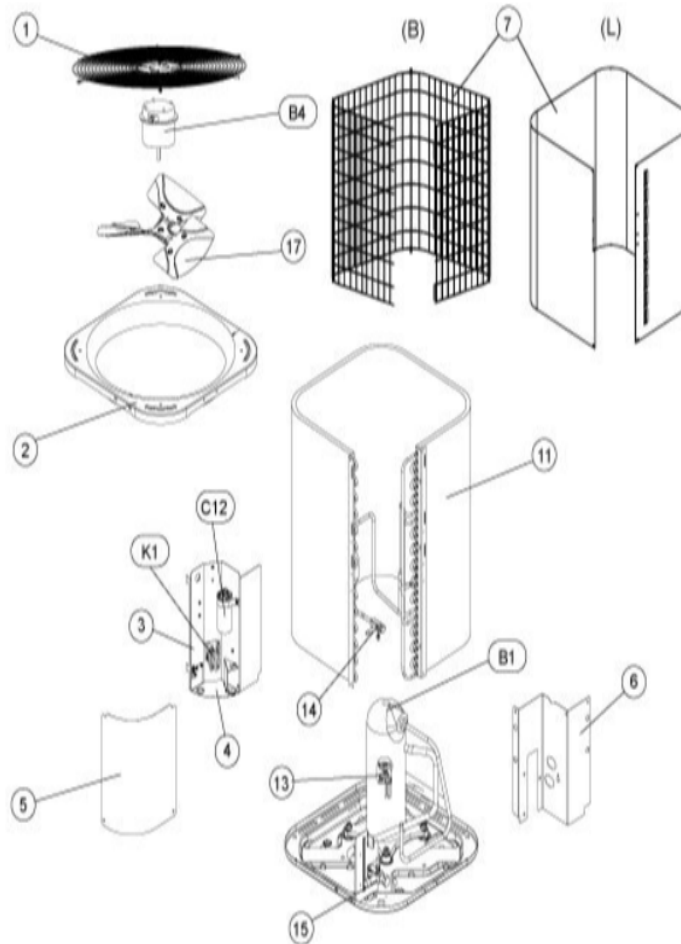


COOLING-CONDENSING  
MARCH, 2009

### 4AC13 SERIES



Revision Number - 5A

## CABINET PARTS

Callout	Name	Quantity	Description
	ORIFICE Cat #: 98M16 Model/Part #: 100001-01	1	ORIFICE RING (22 I.D. X 6)
	PUSH PIN-MESHING Cat #: 42W91 Model/Part #: 100230-06	5	PUSH PIN
	MESHING-COIL Cat #: 26W59 Model/Part #: 100231-42	1	39" X 109" (CUT TO FIT)
2	PANEL-TOP Cat #: 61W05 Model/Part #: 102419-02	1	PANEL-TOP 28 X 28, DUCANE GRAY
3	PANEL-CONTROL Cat #: 61W02 Model/Part #: 102073-02	1	COVER, CONTROL PANEL (DUCANE GRAY)
6	PLATE-PATCH DUCANE GRAY Cat #: 83W75 Model/Part #: 102098-02	1	PLATE-PATCH DUCANE GRAY
7	GUARD-OUTDOOR COIL Cat #: 61W10 Model/Part #: 102466-02	1	GUARD-OUTDOOR COIL

## CONTROL PANEL PARTS

Callout	Name	Quantity	Description
C12	CAPACITOR-FAN&RUN Cat #: 89M83 Model/Part #: 100335-15	1	CAPACITOR 45 + 10 MFD @ 440V ROUND
K1	CONTACTOR Cat #: 95M55 Model/Part #: 100438-01	1	"SPST, 24V"

## COOLING PARTS

Callout	Name	Quantity	Description
	DRIER Cat #: 95M52 Model/Part #: 100214-03	1	DRIER: R410A - ONE WAY - 55G

<b>Callout</b>	<b>Name</b>	<b>Quantity</b>	<b>Description</b>
	KIT Cat #: 97M78 Model/Part #: 100484-24	1	KIT RFC ASSY (.076)
	COVER Cat #: 75W44 Model/Part #: 103048-02	1	THERMISTOR COVER SWITCH ASSEMBLY
	MOUNT PKG-COMP Cat #: 54M63 Model/Part #: LB-106528	1	MOUNT PKG-COMP
11	COIL-OUTDOOR Cat #: 36W53 Model/Part #: LB-87170DN	1	ASSY-REPAIR PART (COIL)
13	HARNES-COMP (REPAIR) Cat #: 44W62 Model/Part #: 102111-01	1	HARNES -WIRE
14	VALVE-SERVICE Cat #: 10W32 Model/Part #: 100432-01	1	VALVE SERVICE 3/8
15	VALVE-BALL SERVICE 7/8 X 7/8 Cat #: 77W34 Model/Part #: 102831-05	1	VALVE-BALL 7/8 X 7/8
17	FAN Cat #: 30W24 Model/Part #: 100060-21	1	FAN 22 INCH - 4 BLADE 32 PITCH CCW
B1	COMPRESSOR ABA036KAA Cat #: 81W07 Model/Part #: 101995-16	1	COMPRESSOR ABA036KAA
B4	MOTOR-FAN Cat #: 49W86 Model/Part #: 100483-24	1	MOTOR-FAN 1/4 HP 208-230V 60HZ
S173	SWITCH-THERMAL Cat #: 75W43 Model/Part #: 103048-01	1	THERMISTOR SWITCH ASSEMBLY
S4	SWITCH-HI PRESS-MANUAL Cat #: 42W41 Model/Part #: 100103-03	1	SWITCH-PRESSURE (HIGH-MANUAL)

**Note:**

There are no technical notes for this product.