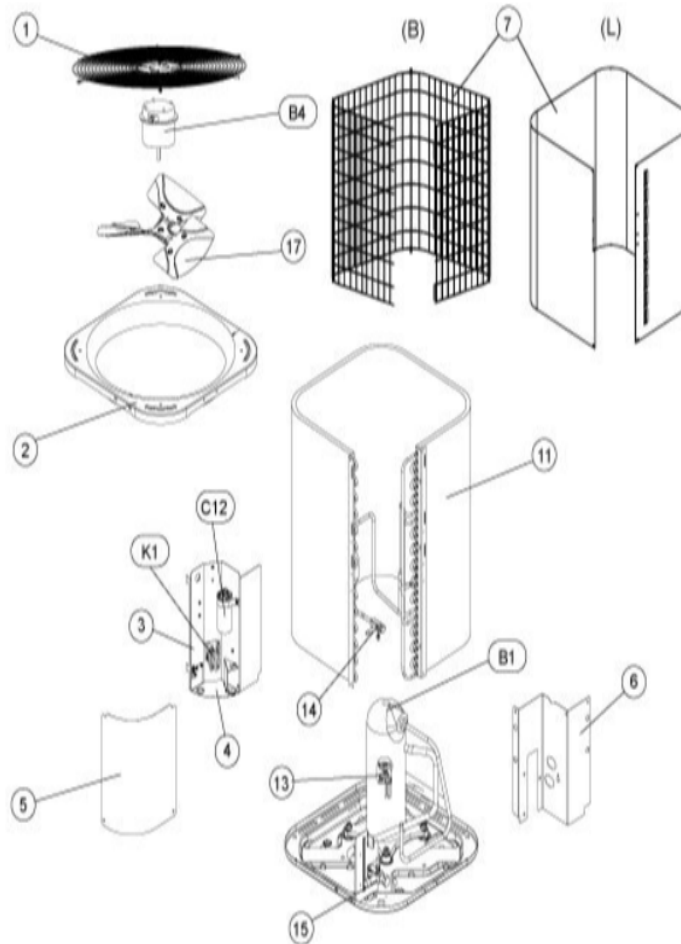


COOLING-CONDENSING  
MARCH, 2009

### 4AC13 SERIES



Revision Number - 1A

## CABINET PARTS

Callout	Name	Quantity	Description
	PUSH PIN-MESHING Cat #: 42W91 Model/Part #: 100230-06	5	PUSH PIN
	MESHING-COIL Cat #: 26W59 Model/Part #: 100231-42	1	"39"" X 109"" (CUT TO FIT)
1	GUARD-FAN Cat #: 28W38 Model/Part #: R101214-01	1	GUARD-FAN: FLAT
2	PANEL-TOP Cat #: 11W87 Model/Part #: R20391806	1	PANEL-TOP (Large)
3	PANEL-CONTROL Cat #: 11W88 Model/Part #: R20419005	1	PANEL-CONTROL BOX
4	PANEL-CONTROL Cat #: 11W89 Model/Part #: R20611801	1	BOTTOM
5	COVER-CONTROL BOX Cat #: 11W70 Model/Part #: R20419104	1	COVER, CONTROL ACCESS
6	PANEL-LOWER Cat #: 11W92 Model/Part #: R20610804	1	PIPING
7	GUARD-COIL Cat #: 11W75 Model/Part #: R100331-05	1	WIRE MESH

## CONTROL PANEL PARTS

Callout	Name	Quantity	Description
C12	CAPACITOR Cat #: 41W15 Model/Part #: 100335-43	1	"45+5MFD,370VAC"
K1	CONTACTOR Cat #: 95M56 Model/Part #: 100438-02	1	"SPST, 24V"

## COOLING PARTS

<b>Callout</b>	<b>Name</b>	<b>Quantity</b>	<b>Description</b>
	KIT Cat #: 97M77 Model/Part #: 100484-23	1	-0.074
	MOUNT PKG-COMP Cat #: 54M63 Model/Part #: LB-106528	1	MOUNT PKG-COMP
	DRIER Cat #: 47W39 Model/Part #: R100214-05	1	DRIER FILTER
11	COIL-OUTDOOR Cat #: 41W97 Model/Part #: R20612217	1	ASSY- COIL (FORMED)
13	HARNESS-COMPRESSOR Cat #: 15M35 Model/Part #: 15M3501	1	COMPRESSOR-MOLDED PLUG
14	VALVE-SERVICE Cat #: 11W97 Model/Part #: R100355-01	1	"3/8"" LIQUID LINE"
15	VALVE-SERVICE Cat #: 11W96 Model/Part #: R100354-02	1	"7/8"" SUCTION LINE"
17	FAN Cat #: 20W14 Model/Part #: 100060-19	1	"1/2""BORE, 22""DIA, 3 BLADE"
B1	COMPRESSOR ZP34K5E-PFV Cat #: 15W10 Model/Part #: 100040-07	1	"3 TON,208-230/60/1,COPE"
B4	MOTOR-FAN Cat #: 97M49 Model/Part #: 100483-02	1	"1/5 HP, 1075 RPM, 208-230/60/1"
S4	SWITCH-HI PRESS-AUTO Cat #: 86M36 Model/Part #: 100087-01	1	"CUTOUT 590 PSIG, CUTIN 418 PSIG"

**Note:**

There are no technical notes for this product.