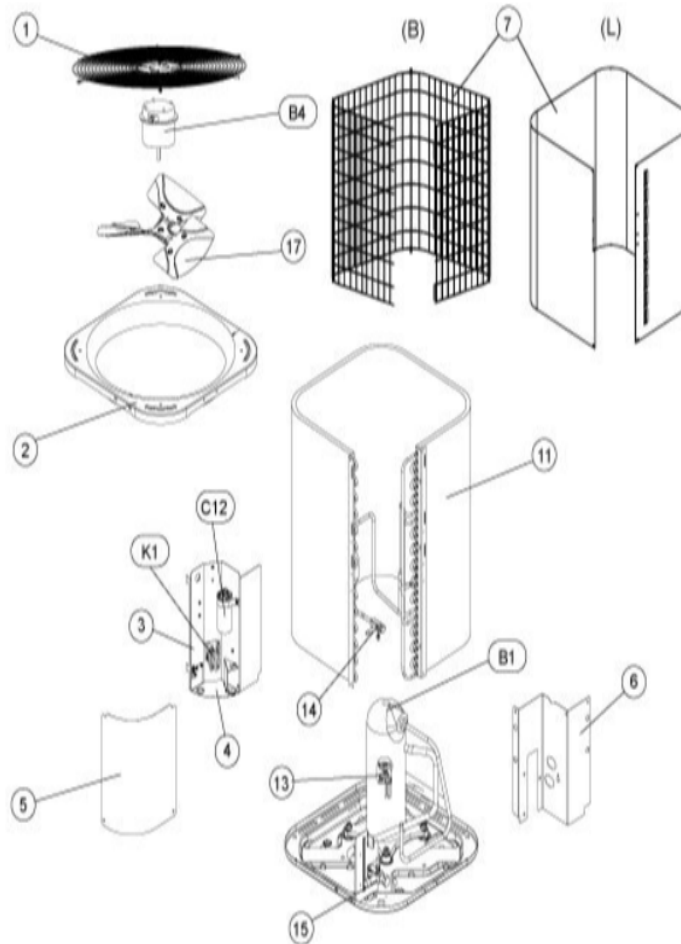


COOLING-CONDENSING
MARCH, 2009

4AC13 SERIES



Revision Number - 1A

CABINET PARTS

Callout	Name	Quantity	Description
	PUSH PIN-MESHING Cat #: 42W91 Model/Part #: 100230-06	5	PUSH PIN
	MESHING-COIL Cat #: 26W30 Model/Part #: 100231-09	1	"36"" X 90"" (CUT TO FIT)
1	GUARD-FAN Cat #: 30W88 Model/Part #: R101214-02	1	GUARD-FAN: FLAT, FOR 18" FAN
2	PANEL-TOP (11W86) Cat #: 11W86 Model/Part #: R20391706	1	PANEL-TOP (Small)
3	PANEL-CONTROL Cat #: 11W88 Model/Part #: R20419005	1	PANEL-CONTROL BOX
4	PANEL-CONTROL Cat #: 11W89 Model/Part #: R20611801	1	BOTTOM
5	COVER-CONTROL BOX Cat #: 11W70 Model/Part #: R20419104	1	COVER, CONTROL ACCESS
6	PANEL-LOWER Cat #: 17W16 Model/Part #: R20610801	1	PIPING
7	GUARD-COIL Cat #: 27W88 Model/Part #: R100331-08	1	WIRE MESH

CONTROL PANEL PARTS

Callout	Name	Quantity	Description
C12	CAPACITOR-DUAL Cat #: 89M70 Model/Part #: 100335-02	1	"30+5MFD,370VAC"
K1	CONTACTOR Cat #: 95M55 Model/Part #: 100438-01	1	"SPST, 24V"

COOLING PARTS

Callout	Name	Quantity	Description
	KIT Cat #: 97M74 Model/Part #: 100484-06	1	-0.053
	MOUNT PKG-COMP Cat #: 54M63 Model/Part #: LB-106528	1	MOUNT PKG-COMP
	DRIER Cat #: 47W39 Model/Part #: R100214-05	1	FILTER-DRIER
11	COIL-OUTDOOR Cat #: 27W90 Model/Part #: R20612213	1	ASSY- COIL (FORMED)
13	HARNESS-COMPRESSOR Cat #: 15M35 Model/Part #: 15M3501	1	COMPRESSOR-MOLDED PLUG
14	VALVE-SERVICE Cat #: 11W97 Model/Part #: R100355-01	1	"3/8"" LIQUID LINE"
15	VALVE-SERVICE Cat #: 11W95 Model/Part #: R100354-01	1	"3/4"" SUCTION LINE"
17	FAN Cat #: 97M64 Model/Part #: 100060-03	1	"1/2""BORE, 18""DIA, 3 BLADE"
B1	COMPRESSOR Cat #: 97M52 Model/Part #: 100040-01	1	"1.5 TON,208-230/60/1,COPE"
B4	MOTOR-FAN Cat #: 97M50 Model/Part #: 100483-04	1	"1/10 HP, 1075 RPM, 208-230/60/1"
S4	SWITCH-HI PRESS-AUTO Cat #: 86M36 Model/Part #: 100087-01	1	"CUTOUT 590 PSIG, CUTIN 418 PSIG"

Note:

There are no technical notes for this product.