

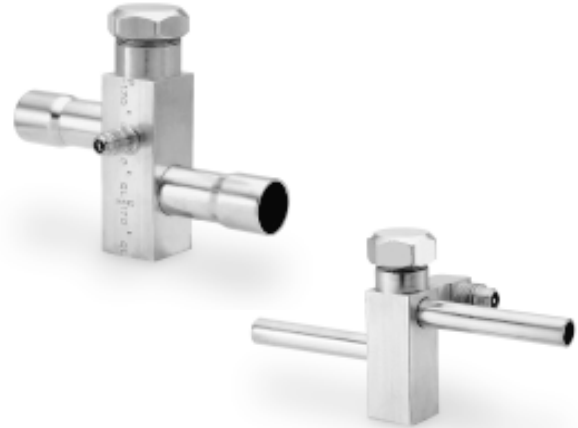
## Service Valves

Parker offers a variety of service valves to meet your needs, including front seating shut off valves, back

seating shut off valves, mini split valves, and brass angle shut off valves, plus valve cores and adapter kits.

## Front Seated Shut Off Valve

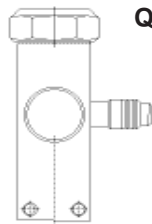
The Parker QL 171 series brass valve features a front seating design with a brass-to-brass stem seal. A corrosion resistant body, low pressure drop porting and a tamper proof recessed stem drive are advantages not readily available with steel constructed valves. Schrader valve fittings which allow system pressure checks, evacuation, or charging are available either on the left (L) or right (R) side when looking directly into the field connection.



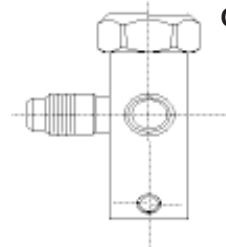
### Key Features and Benefits

- All brass body and stem.
- Leak rate: 1/10 ounce per year.
- 3/8" to 7/8" ODF sweat extended copper connections.
- Low cost alternative to ball and/or other type of hand valves.
- Rugged brass construction provides universal replacement for other valves.

- Available as standard base mounted or optional bracket mounted design.
- Valve service gauge port machined for Schrader core.
- U.L. recognized file 3604.



QL171 Right



QL171 Left

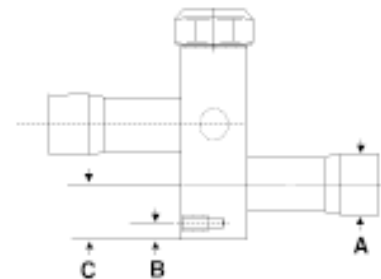
## Front Seating Shut Off Valve Dimensions

Side Mount					
Model Number	"A"	"B"	optional Mounting	"C"	System Cutout
QL171L-06-06	3/8	0.16	single 10-32 UNF THD	0.5	4.58
QL171L-10-10	5/8	0.22	dual holes only	0.92	5.00
QL171R-12-12	3/4	0.22	dual 10-32 UNF	0.75	5.00
QL171L-12-12	3/4	0.22	dual holes only	0.92	5.00
QL171R-14-14	7/8	0.22	dual 10-32 UNF	0.81	5.13
QL171L-14-14	7/8	0.22	dual holes only	0.92 </td <td>4.74</td>	4.74

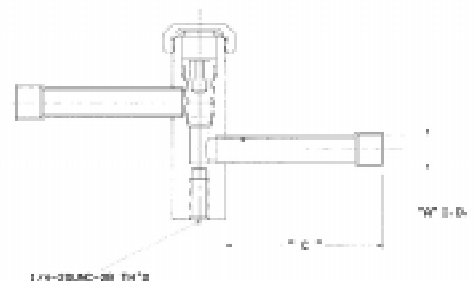
  

Bottom Mount					
Model Number	"A"	"B"	optional Mounting	"C"	System Cutout
QL171R-06-06	3/8	N/A	1/4 20 UNC	0.89	4.58
QL171R-08-08	1/2	N/A	1/4 20 UNC	1.07	5.00
QL171R-10-10	5/8	N/A	1/4 20 UNC	1.07	5.00
QL171R-12-12	3/4	N/A	1/4 20 UNC	1.07	5.00
QL171R-14-14	7/8	N/A	1/4 20 UNC	1.17	5.13

Side Mount



Bottom Mount



\*L or R designate gage port location when looking directly into field connection.

\*\*Specify desired mounting style when ordering.