

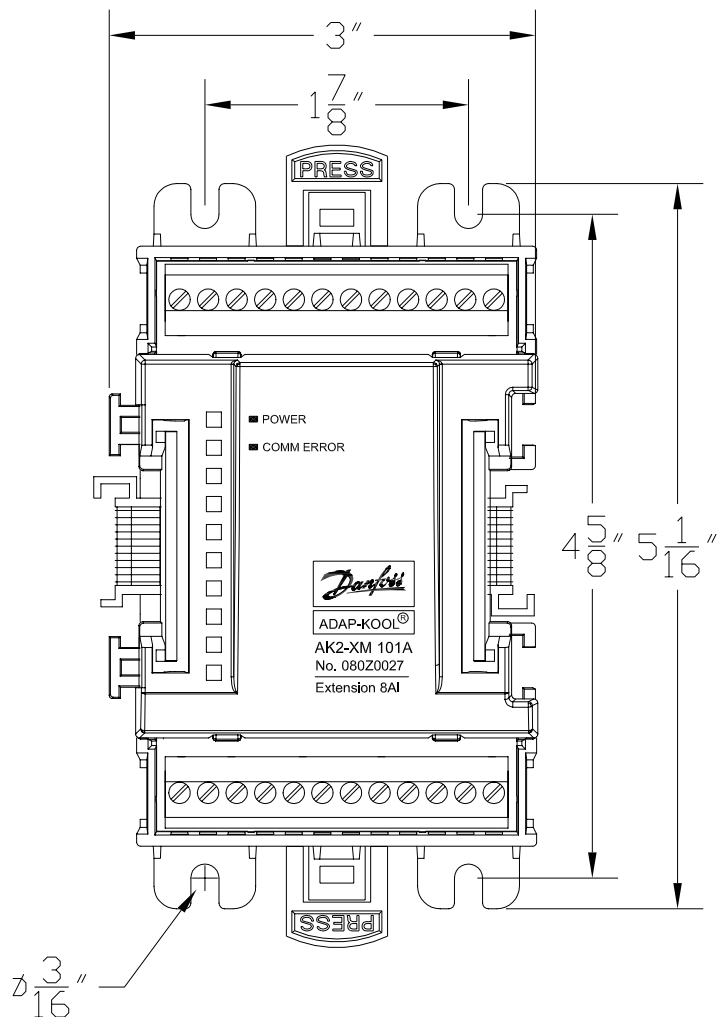
# Instructions

## Universal Analog Input Module

### Type AK2-XM 101A

code number 080Z0007

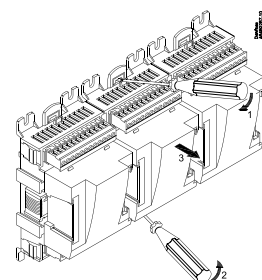
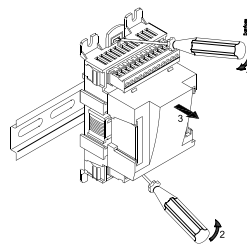
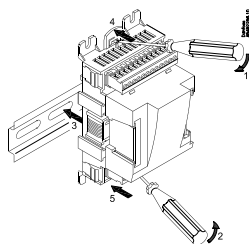
### Dimensions



### Mounting on DIN rail

Raise red tabs to mount or dismount. Use a small screwdriver and the fulcrum on the module enclosure. Press red tabs to secure module in position on rail.

A module can be removed from any position in a lineup if replacement is necessary.



# Wiring for an AK2-XM 101A module

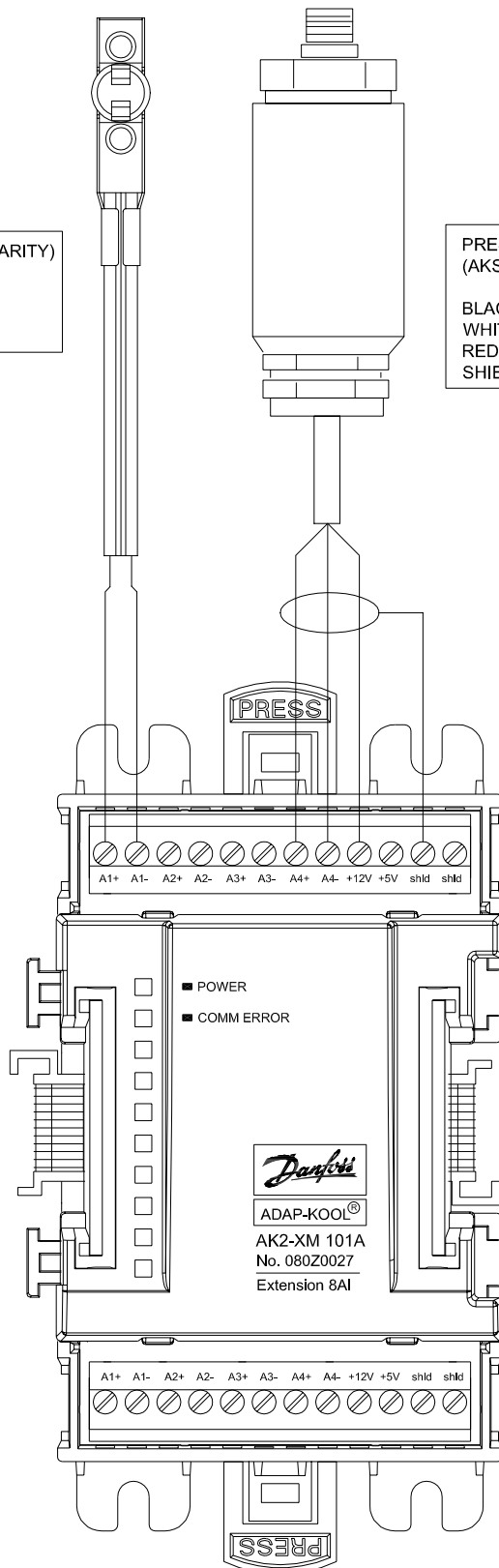
TEMPERATURE SENSOR (NO POLARITY)  
(AKS 11)  
CONNECT LEADS TO  
SIG AND GND

PRESSURE TRANSDUCER  
(AKS 32)  
BLACK: GND  
WHITE: SIG  
RED: +12V  
SHIELD: SHLD

OUTDOOR RH SENSOR  
(EMHS-4)  
- TERMINAL: GND  
Ø TERMINAL: SIG  
+ TERMINAL: +12V

INDOOR RH WITH TEMP SENSOR  
(EMHS-3)  
RH:  
G TERMINAL: GND  
H TERMINAL: SIG  
V TERMINAL: +12V  
TEMP: T1 AND T2 (NO POLARITY)  
CONNECT TO SIG AND GND

OUTDOOR PHOTO WITH TEMP SENSOR  
(PHOTO-OD-1)  
PHOTO:  
12VAC OR DC: } EXTERNALLY SUPPLIED  
PHOTO OUT SIG: SIG  
PHOTO OUT GND: GND  
TEMP: BROWN AND WHITE LEADS (NO POLARITY)  
CONNECT LEADS TO SIG AND GND





# Universal Analog Input Module

## Analog Input Connections

<b>0</b>		
----------	--	--

Communications module address:

The unique address of the communications module for this lineup of modules, as read from the address switches.

I/O module location:

The position of the I/O module in relation to the communications module. Number 1 is the module next to the communications module, 2 is next, and so up to 9.

Point Number	Type of Point	Description or name of point
<b>01</b>		
<b>02</b>		
<b>03</b>		
<b>04</b>		
<b>05</b>		
<b>06</b>		
<b>07</b>		
<b>08</b>		

Use this form to record the information about the wiring of each input-output module, so that you will have the information at hand when configuring the inputs and outputs at the host network controller.

Types of point are: DO=digital output; DI=digital input; AI=analog input.