

Central Brass Company, Inc.

3325 S. Garfield Ave.
 Commerce, CA 90040
 (800) 321-8630
 www.centralbrass.com

Tools:



Adjustable
Wrench



Pipe Cutter



Propane
Torch



Lead-Free Solder



Teflon Tape

Model Number: 0607, 80607 Series

Warnings and Notes:

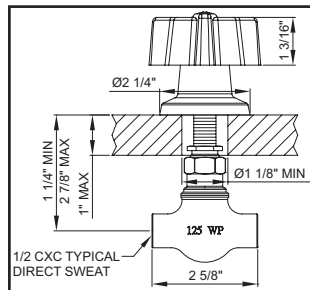
Check with local plumbing code requirements before installation.

This product should be installed by a local listed plumber.

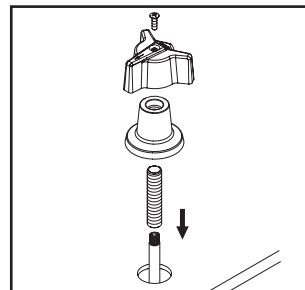
Do not use plumbers putty on threads.

Installation Steps:

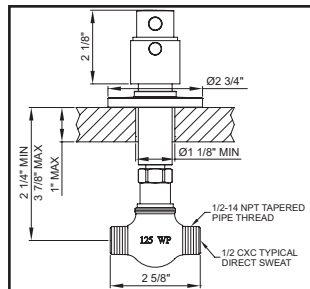
Tile Stop Valve



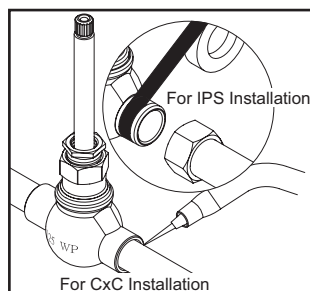
(1) **For 3-Point Lever Handle Installation:-** Determine the location of the valve to be installed for new installation. For existing installation please look at the installation drawing and ensure there is enough space to install the valve



(4) Attach nipple, escutcheon and handle to the valve body and secure handle by tightening handle screw.



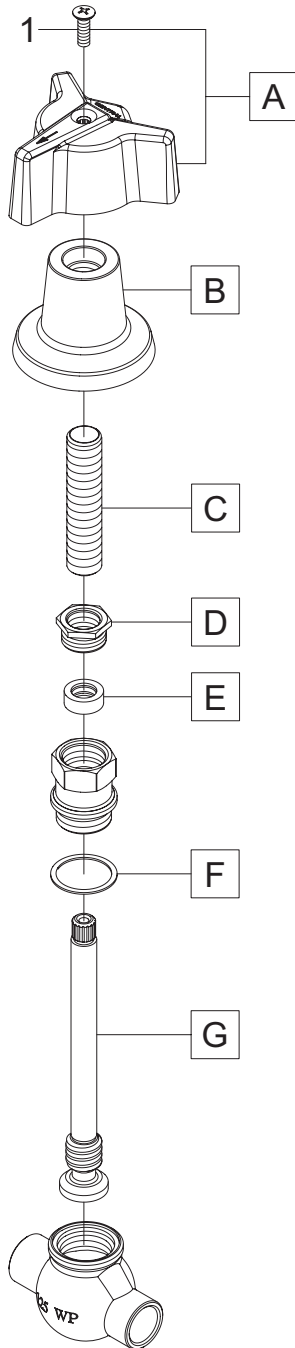
(2) **For M1 & B1 ~ B4 Lever Handles Installation:-** Determine the location of the valve to be installed for new installation. For existing installation please look at the installation drawing and ensure there is enough space to install the valve



(3) Connect valve body to water inlets using the proper fittings (Copper, IPS, PEX-Crimp, PEX-Cold Expansion, CPVC). Note:- For PEX, be sure to use the right fitting for crimping and the right fitting for Cold Expansion.

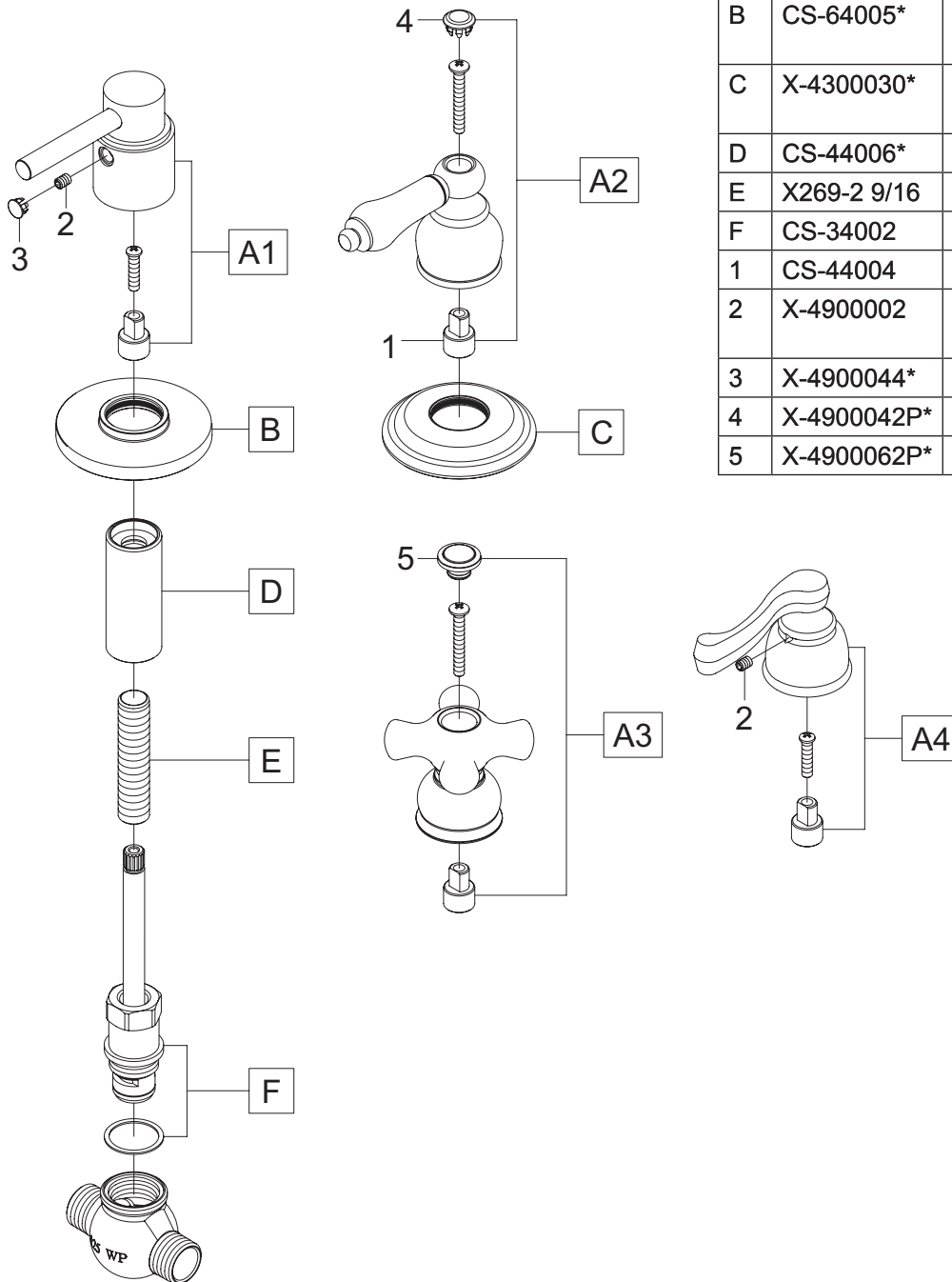
Exploded Drawing (0607 Series):

	ITEM #	DESCRIPTION
A	G-521-BWD	3-Point Lever Handle With Screw
B	1011-N	Escutcheon
C	X269-2 9/16	2-9/16" Brass Nipple (10/PK)
D	X765-TA	Brass Hex Packing Nut (6/pk)
E	X814-BARP	Rubber Packing (10/pk)
F	X402-A	Fiber Washer for Stem (25/pk)
G	SU-1548-605	Stem Assembly
1	X107-F	Val Head Screw For Handle Phillips (25/pk)



Exploded Drawing (80607 Series):

* Note: Please specify finish/color when ordering.



	ITEM #	DESCRIPTION
A1	CS-49037*	Handle Kit (For "M1" Suffix)
A2	CS-49038P*	Handle Kit (For "B1" Suffix)
A2	CS-49039P*	Handle Kit (For "B2" Suffix)
A3	CS-49040P*	Handle Kit (For "B3" Suffix)
A4	CS-49041C*	Handle Kit (For "B4" Suffix)
B	CS-64005*	Handle Escutcheon (For "M1" Suffix)
C	X-4300030*	Handle Escutcheon (For "B1-B4" Suffix)
D	CS-44006*	Handle Decorative Sleeve
E	X269-2 9/16	2-9/16" Brass Nipple (10/PK)
F	CS-34002	Ceramic Stem Assembly
1	CS-44004	Stem Spline to D Adapter
2	X-4900002	3/32" Allen Screw (For "M1, B4" Suffix)
3	X-4900044*	Hole Cover (For "M1" Suffix)
4	X-4900042P*	Button-P (For "B1, B2" Suffix)
5	X-4900062P*	Button-P (For "B3" Suffix)

Central Brass

COMPANY, Inc.

For more care information or trouble shooting inquiries about your Central Brass product, please call:
Central Brass Company, Inc. (800) 321-8630
 Monday-Friday 8 AM to 8 PM EST (5 AM to 5 PM PST)
www.centralbrass.com
 Oct. 25. 24