



Multi-HP SOS Condenser Fan Motors

5 1/2 inch dia. MARS SERIES **034**

SOS™ Multi-Horsepower Outdoor Condenser Fan Motors



GE Commercial Motors
By Regal-Beloit

MARS SOS™ multi-horsepower condenser fan motors are ideal for truck stock. Three 1075 RPM models cover 208-230 volt applications from 1/6 to 1/2 HP.

New Slim Stack™ #03458, **WIZARD**, and the new **WIZARD 825** fit in many 1/3 HP installations that will not accept other manufacturer's motors.

The 03458 is a single speed "wide-range" motor that will run at any fan load from 1/6 to 1/3 HP at a nominal 1075 RPM. MARS #03459, the new WIZARD 825, will run at any fan load from 1/8 to 1/3 HP at a nominal 825 RPM.

All SOS™ motors feature easy mounting in Rheem applications.

Features:

- Multi-HP
- Ball Bearings
- Thru bolt or band mounting
- Rheem mounting capability
- Water slinger on shaft
- Air conditioning or heat pump duty
- Capacitor requirement noted on motor label
- End Shield drain holes w/plugs



* Heat Shield

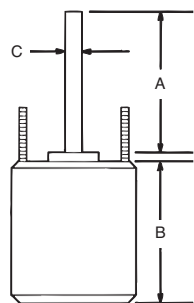
GE by RBC

Cross Reference:

| A.O. Smith | Emerson | MARS NO. |
|-----------------|---------|--------------|
| ORM5458 | 5458 | 03458 |
| ORM5488B | 5464 | 03459 |
| FSE6000, FE6000 | 5462 | 03465 |
| FE6002 | 5465 | 03468 |
| FE6001 | 5464 | 03469 |

Specifications:

- Single phase, 60 Hz
- Overload protection
- Fan duty, continuous air over
- Totally enclosed, Non-ventillated
- Class B insulation



Multi-Horsepower, Reversible Rotation

| MARS NO. | GE NO. 5KCP39 | HP | VOLTS | AMPS | A | B | C |
|----------|---------------|----|-------|------|---|---|---|
|----------|---------------|----|-------|------|---|---|---|

1075 RPM - 6 Pole

| | | | | | | | | |
|---------------|-----------------|---------|-------------------------|---------|------|------|------|-----|
| Wizard | 03458 | JGU530S | 1/3, 1/4, 1/5, 1/6 | 208-230 | 2.80 | 6.75 | 4.48 | 1/2 |
| Wizard | 03458HS* | LGU7215 | 1/3, 1/4, 1/5, 1/6 | 208-230 | 2.60 | 6.50 | 5.23 | 1/2 |
| Wizard | 03460* | RGU709S | 1/2, 1/3, 1/4, 1/5, 1/6 | 208-230 | 3.00 | 6.75 | 4.48 | 1/2 |
| | 03465* | LGU735S | 1/3, 1/4, 1/5, 1/6 | 208-230 | 2.50 | 5.00 | 4.73 | 1/2 |
| | 03468* | RGU733S | 1/2, 1/3, 1/4, 1/5 | 208-230 | 3.10 | 5.00 | 5.48 | 1/2 |

825 RPM - 8 Pole

| | | | | | | | | |
|-------------------|---------------|---------|-------------------------|---------|------|------|------|-----|
| Wizard 825 | 03459* | NFBA87S | 1/3, 1/4, 1/5, 1/6, 1/8 | 208-230 | 1.80 | 6.50 | 5.48 | 1/2 |
| Wizard 825 | 03461* | TFBA86S | 1/2, 1/3, 1/4, 1/5, 1/6 | 208-230 | 2.80 | 6.50 | 6.48 | 1/2 |
| | 03469* | SGU732S | 1/3, 1/4, 1/5, 1/6 | 208-230 | 2.00 | 6.50 | 5.98 | 1/2 |

* Heat Shield



The largest selection of motors, components and accessories for the HVAC/R Industry