

Central Brass Company, Inc.
3325 S. Garfield Ave.
Commerce, CA 90040
(800) 321-8630
www.centralbrass.com

Tools:



Adjustable Wrench



Plumbers Putty



Teflon Tape



Rags

Model Number: 0047, 0048, 0400 Series, 44681.02
44683.02, 44685.02, 44691.02



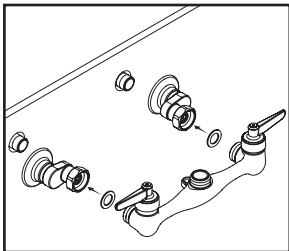
Warnings and Notes:

Check with local plumbing code requirements before installation.
This product should be installed by a local listed plumber.

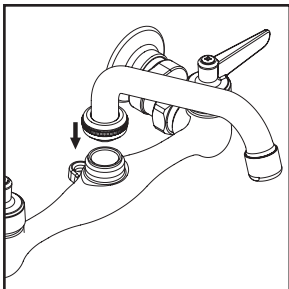
Do not use plumbers putty on threads.

Installation Steps:

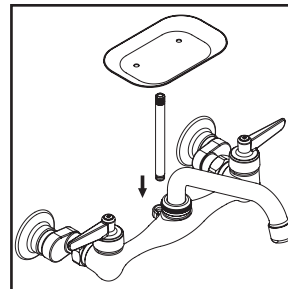
Wallmount Kitchen Faucet



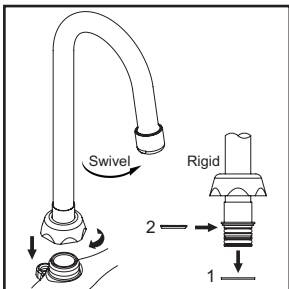
(1) Shut off main water supply. Confirm the distance between the centers of inlet pipe nipples. For "S" suffix is between 6-1/2" to 9-1/2" maximum apart. For "T" suffix & "U" suffix is between 7-7/8" to 8-1/8" maximum apart. For "R" suffix is between 3" to 8-1/2" maximum apart. Apply Teflon tape on the thread end of inlet pipe nipples for "S" suffix, "U" suffix and "R" suffix models, apply Teflon tape on the thread end of flange assembly for "T" suffix models. Adjust proper distance then tighten both flange assemblies to the inlet pipes with wrench, place washer inside Hex nut of flange assembly, attach and tighten Hex nut to the faucet body with wrench.



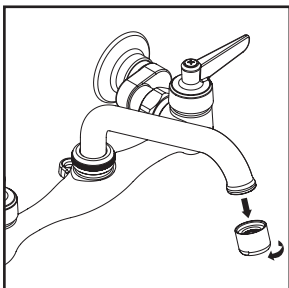
(2) Install spout to the faucet body. Make sure the spout is installed straight to avoid damaging the O-ring.



(5) For 0048 Series, attach soap dish.



(3) For spout model number CS-22002, CS-22003, utilize friction brass washer to make spout rigid by removing Nylon gasket and replacing with friction brass washer, tighten retainer nut to the faucet body with wrench.



(4) Important: After installation is complete, remove aerator. Turn on main water supply. Turn on both handles and allow hot and cold water to run at least one minute each. While water is running, check for leaks. Turn off water and replace aerator.