

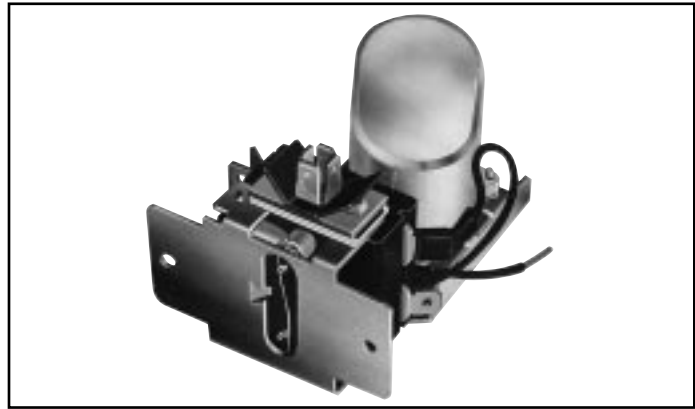
# TIME DELAY SEQUENCERS

## T34 SERIES TIME DELAY SEQUENCE CONTROL

These direct replacement time delay/sequence controls prevent compressor short cycling during power outages and pressure cut-out.

### ELECTRICAL RATING

RATING	120V	240V
FULL LOAD AMPS	9.8	4.9
LOCKED ROTOR AMPS	58.8	29.4
PILOT DUTY (VA)	125	125
RESISTIVE LOADS AMPS	15	10



### ORDERING DATA

UNI-LINE ORDER NO.	REPLACES	VOLTAGE (VAC)	WIRING DIAGRAM
T34-129	CARRIER: HK25DK036, HK25DK038, HK25MJ148, HK25RC001, HK25RC013; G.E.: WW24X67, 21B116676P01; LENNOX: P-8-5325	208/240	1
T34-131	CARRIER: HK25MJ172, HK25RC010	208/240	2
T34-132*	CARRIER: HK25DK050, HK25MJ152, HK25RC002, HK25RC014; ITT/NESBITT: 430-2620, 430-4-2620; YORK: 025-16341C-001, 025-16341C-004	120	1
T34-133	CARRIER: HK25MJ174, HK25RC011	120	2
T34-153	CARRIER: HK25MJ173, HK25RC012; RHEEM: 47-18795-01	24	1

\* Replaces T34-142

### WIRING DIAGRAMS

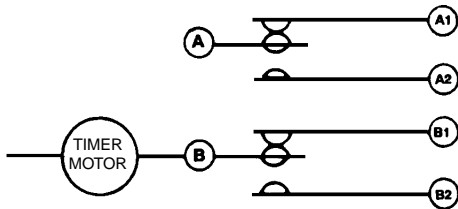


FIGURE 1

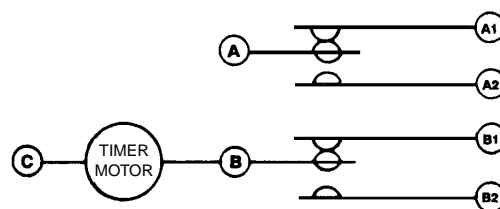


FIGURE 2

### CROSS-REFERENCE

MANUFACTURER'S PART NUMBER	RANCO ORIGINAL PART NUMBER	RANCO WHOLESALE REPLACEMENT PART NUMBER	MANUFACTURER'S PART NUMBER	RANCO ORIGINAL PART NUMBER	RANCO WHOLESALE REPLACEMENT PART NUMBER
<b>CARRIER</b>			<b>GENERAL ELECTRIC</b>		
HK25DK036	T34-101	T34-129	WW24X67	T34-135	T34-129
HK25DK038	T34-101	T34-129	21B116676P01	T34-135	T34-129
HK25DK050	T34-103	T34-132	<b>ITT/NESBITT</b>		
HK25MJ148	T34-108	T34-129	430-2620	T34-116	T34-132
HK25MJ152	T34-109	T34-132	430-4-2620	T34-116	T34-132
HK25MJ172	T34-111	T34-131	<b>LENNOX</b>		
HK25MJ173	T34-110	T34-153	P-8-5325	T34-102	T34-129
HK25MJ174	T34-112	T34-133	<b>RHEEM</b>		
HK25RC001	T34-101	T34-129	47-18795-01	T34-123	T34-153
HK25RC002	T34-103	T34-132	<b>YORK</b>		
HK25RC010	T34-111	T34-131	025-16341C-001	T34-119	T34-132
HK25RC011	T34-112	T34-133	025-16341C-004	T34-138	T34-132
HK25RC012	T34-110	T34-153			
HK25RC013	T34-108	T34-129			
HK25RC014	T34-109	T34-132			