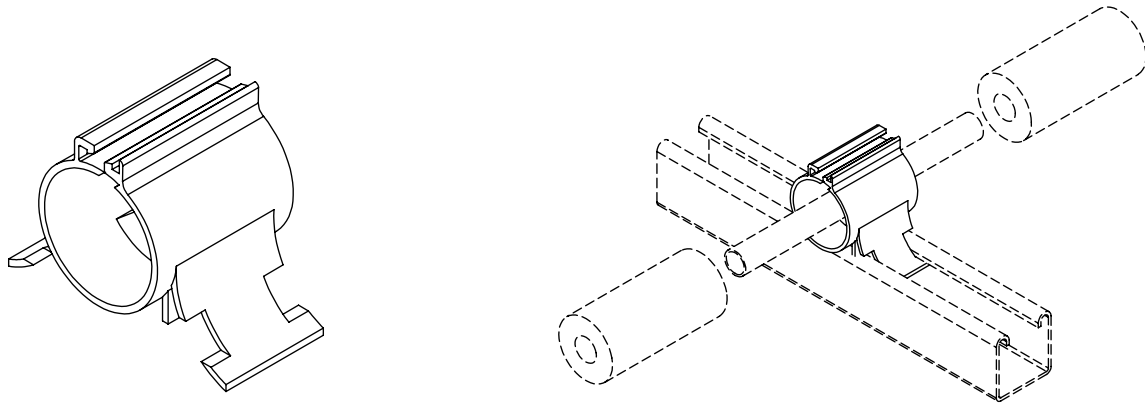


PRODUCT SPECIFICATION DRAWING

HOLDRITE® Insulation Coupling 8 Series Strut Mount



THE HOLDRITE® Insulation Coupling “8 Series” clamps are designed for use with insulated pipe lines mounted on strut. These one piece clamps are non-metallic and fasten simply with the use of a pair of pliers and without any hardware or fasteners. Recommended for horizontal positioning only.

Product Information:

- Installation time is greatly reduced
- Complete vapor barrier at suspension points by gluing or taping the butt joint
- Dramatically improves finished appearance of insulated tube runs
- Eliminates insulation compression at suspension points
- For use as a strut-mounted clamp (recommended for horizontal top mounting only)
- Currently available for 5/8” to 2-5/8” O.D. tube and 1/2” or 1” wall insulation thickness
- Temperature range (safe range): -45°F to 275°F



.....HUBBARD ENTERPRISES.....
HOLDRITE®
“Converting Makeshift Methods into Engineered Solutions”SM

Product Submittal	
Job Name:	
Date:	
Part Number:	Qty:
Architect / Owner:	
Contractor:	
Notes:	