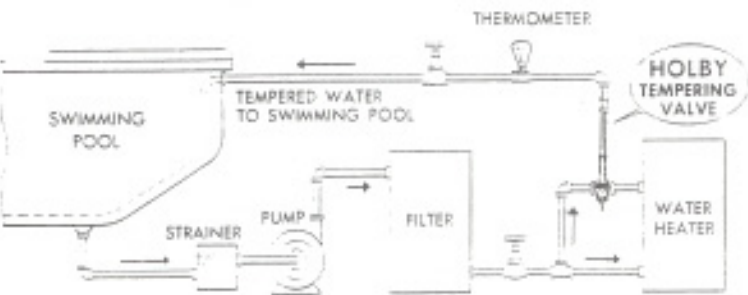
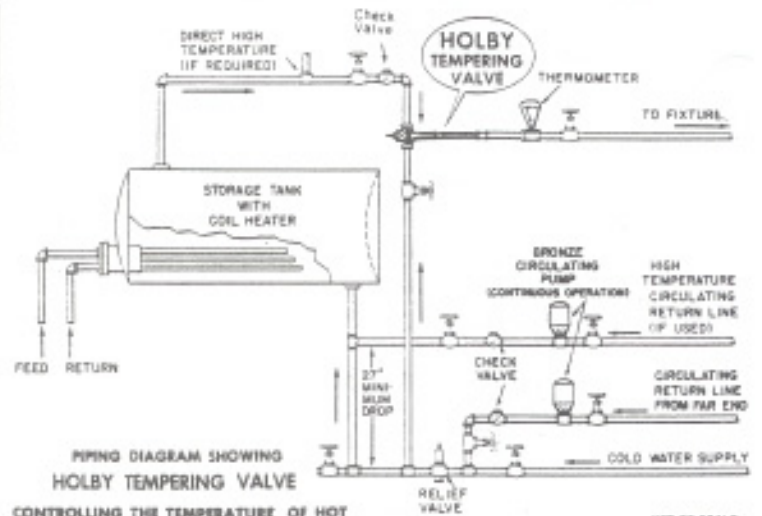


HOLBY TEMPERING VALVE - TYPICAL INSTALLATIONS



PIPING DIAGRAM SHOWING
HOLBY
TEMPERING VALVE AS USED
WITH HEATER FOR SWIMMING POOLS

NOTES
WHEN ORDERING SPECIFY
FOR LOW TEMPERATURE
OPERATION
FOR ALL OTHER SWIMMING
POOL EQUIPMENT FOLLOW
MANUFACTURERS INSTRUCTIONS



PIPING DIAGRAM SHOWING
HOLBY TEMPERING VALVE
CONTROLLING THE TEMPERATURE OF HOT
WATER COMING FROM A STORAGE TANK
HEATED BY AN IMMERSED COIL WITH
A RECIRCULATING SYSTEM

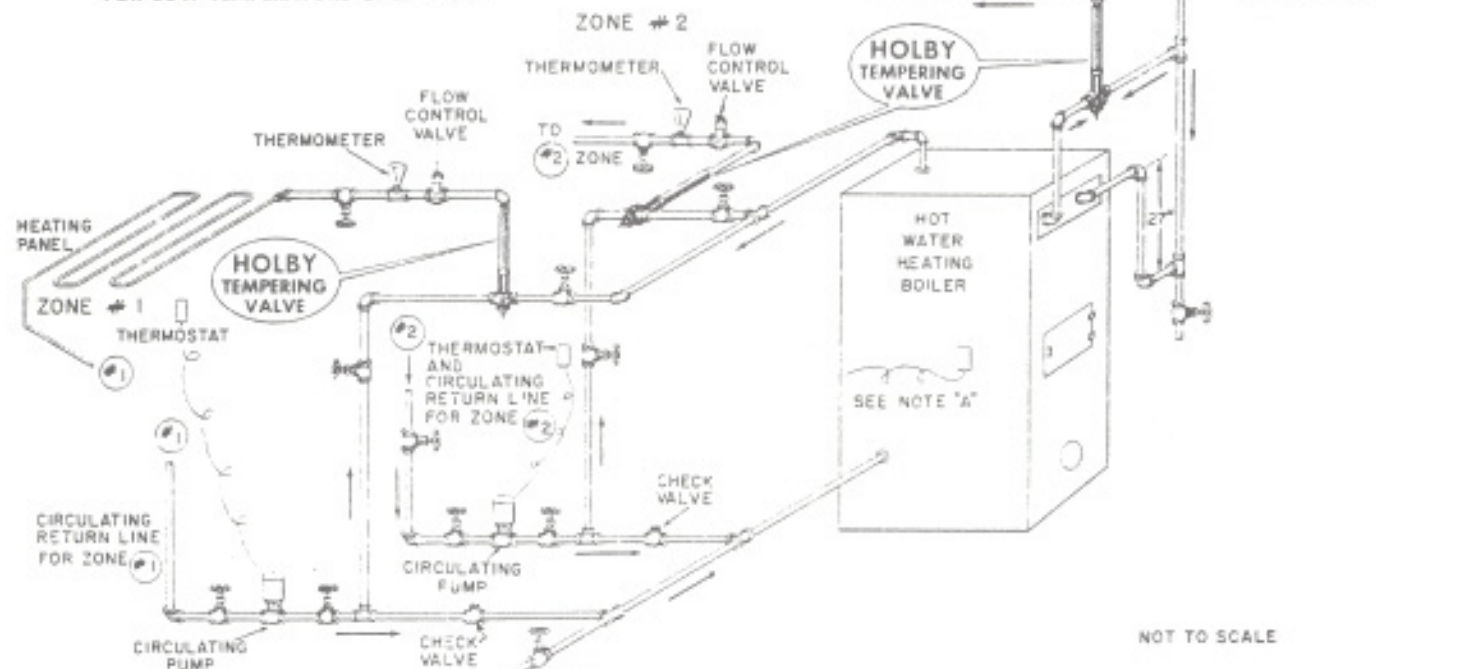
NOT TO SCALE

PIPING DIAGRAM SHOWING HOLBY TEMPERING VALVES

AS USED TO CONTROL THE REQUIRED TEMPERATURES
TO SUPPLY THE DIFFERENT TYPES OF HEATING UNITS*
TO THE VARIOUS ZONES IN A HYDRONIC HEATING SYSTEM,
ALSO AS USED FOR THE DOMESTIC HOT WATER SUPPLY SYSTEM

PROVIDE REQUIRED ACCESSORIES FOR AIR ELIMINATION,
FLOW CONTROL, & EXPANSION.

WHEN ORDERING FOR TEMPERATURES LOWER THAN 120° F
SPECIFY: **HOLBY TEMPERING VALVES**
FOR LOW TEMPERATURE OPERATION



NOT TO SCALE

*RADIATORS, COILS, BASEBOARD RADIATION,
LOW TEMPERATURE FLOOR AND CEILING
PANEL GRIDS, ETC.

ADDITIONAL ZONES CAN BE ADDED

NOTE "A"
REVERSE ACTING AQUASTAT TO STOP
CIRCULATING PUMPS WHEN TEMPERATURE
IN BOILER DROPS BELOW TEMPERATURE
REQUIRED FOR THE DOMESTIC HOT WATER
SUPPLY SYSTEM
(CONNECTED TO BREAK LINE WIRE TO PUMPS)

HOLBY VALVE COMPANY, INC.
1146 SECOND AVENUE, NEW YORK, N.Y. 10021, U.S.A.
Phone: (212) 838-6363 • Fax: (212) 838-6367

PIPING DIAGRAMS FOR VARIOUS OTHER USES AND APPLICATIONS AVAILABLE ON REQUEST.