

ELECTRONIC FAN CONTROLS

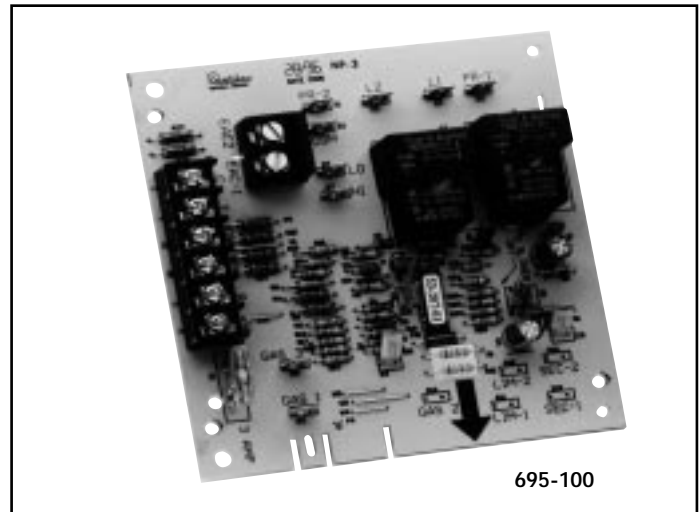
695-100 & 695-101

CARRIER / BDP FAN CONTROL CENTERS

The 695-100 Series Fan Control Centers are solid state controls designed and engineered for the replacement market. They specifically replace the Carrier / BDP Gas Furnace Control Centers that have been used in new equipment for many years. The Fan Control Center is an exact replacement requiring no modification to the original wiring or to the appliance sheet metal.

CROSS-REFERENCE

CES0110017	695-100	HH84AA013	695-100
CES0110018	695-100	HH84AA014	695-101
HH84AA001	695-101	HH84AA015	695-101
HH84AA003	695-101	HH84AA020	695-100
HH84AA005	695-101	HH84AA021	695-101
HH84AA009	695-101	P771-7002	695-100
HH84AA010	695-100	302075-3	695-100
HH84AA011	695-100	302075-302	695-100
HH84AA012	695-100		



SPECIFICATIONS

695-100

Input voltage	120 VAC
Terminals: PR-1, PR-2, L1 & L2	18-30 VAC
Terminals: SEC-1 & SEC-2	60 Hz
Line frequency	- 40° to 176°F
Operating temperature	95% R.H.
Maximum operating humidity	non-condensing @ 50°C
Time delay timings	
Heat "On"	75 seconds
Heat "Off"	105 seconds
Cool "Off"	90 seconds

695-101

Input voltage	120 VAC
Terminals: PR-1, PR-2, L1 & L2	18-30 VAC
Terminals: SEC-1 & SEC-2	60 Hz
Line frequency	- 40° to 176°F
Operating temperature	95% R.H.
Maximum operating humidity	non-condensing @ 50°C
Time delay timings	
Heat "On"	50 seconds
Heat "Off"	80 to 240 seconds (ADJ)
Cool "Off"	90 seconds

ORDERING DATA

UNI-LINE ORDER NO.	DESCRIPTION	UNI-LINE ORDER NO.	DESCRIPTION
695-100	REPLACES HH84AA020	695-101	REPLACES HH84AA021

MISCELLANEOUS CARRIER/BDP REPLACEMENT PARTS



10-660

(REPLACES HY660001)

The 10-660 fusible link repair kit is identical to Carrier/BDP part number HY660001. The 10-660 also replaces Carrier part number P421-1010 and 307566-701.



10-680

(REPLACES LH680512)

The 10-680 electrode assembly is identical to Carrier/BDP part number LH680512. The 10-680 is designed specifically to fit Carrier/BDP pilot burners part numbers LH68005 and LH33JZ053.



10-682

(REPLACES LH33CM018)

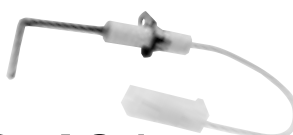
The 10-682 sensor is identical to Carrier/BDP part number LH33CM018. It is also identical to Penn-Johnson part number Y75AS-1.



10-661

(REPLACES HY10LF286)

The fusible link repair kit is identical to Carrier/BDP part number HY10LF286.



10-681

(REPLACES LH33WZ511)

The 10-681 flame sensor is identical to Carrier/BDP part number LH33WZ511. The 10-681 is used in a system with the 41-409 hot surface ignitor.



41-409

(REPLACES LH33ZS002)

The 41-409 is an exact replacement for Carrier/BDP part number LH33ZS002.