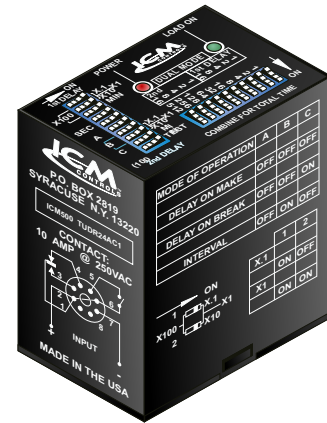




## Features

- Multi-mode, selectable time delay ranges
- Crystal timing accuracy
- Microprocessor controlled
- (4) single and (2) dual timing modes
  - DOM, DOB, Interval, Single Shot,
  - DOM/DOB and repeat cycle
- Bright LED's indicate input and output
- 8-pin is for single pole, 11-pin is for double pole
- Switch-settable time delays:
  - 1 to 1,023 seconds or minutes in multiples of 0.1, 1, 10, or 100
- 75 ms reset time during and after timing
  - May be reset during the time delay period without false output
- 8-pin base standard models
  - Add suffix D for 11-pin models.
  - Socket sold separately
- Adjustable from milliseconds to months



## Timing Functions

- |                |             |              |
|----------------|-------------|--------------|
| Delay on Make  | Interval    | DOM/DOB      |
| Delay on Break | Single Shot | Repeat Cycle |

## Mode of Operation

The ICM500 series multi-mode timers can be set to function as six separate timers (four single mode and two dual mode). The four single mode timers include DOM, DOB, interval, and single shot. The two dual mode timers include DOM/DOB and repeat cycle.

## Specifications

### Time Delay

- Type: Switch Settable
- Range: 1 to 1,023 seconds or minutes (Multiples of 0.1, 1, 10, or 100)
- Repeat Accuracy:  $\pm 2\%$  under fixed conditions
- Fixed Time Tolerance:  $\pm 5\%$
- Time Delay vs. Temperature and Voltage:  $\pm 5\%$  maximum over the specified range of input voltage and temperature

### Input

- Nominal Voltage: 24, 115, 230 VAC  
12, 24, 110 VDC
- Tolerance:  $\pm 15\%$  of nominal
- Frequency: 50/60 Hz
- Maximum allowable DC ripple voltage: 20% peak to peak
- Power Consumption:
  - During timing: 0.5 watts maximum
  - After timing: 2.0 watts maximum

### Output

- Type: Relay
- Form: SPDT, DPDT
- Rating:
  - 10 amps resistive at 230 VAC
  - 1/6 HP @ 115 VAC
  - 1/3 HP @ 230 VAC
- Life: Mechanical 10,000,000;
- Full load: 1,000,000 operations

### Protection

- Transient:  $\pm 1,400$  volts for 100  $\mu$ s
- Polarity: DC units are inverse voltage protected
- Dielectric Breakdown: 1,500 volts RMS minimum at 60 Hz between input and output terminals
- Insulation Resistance: 100 megohms minimum

### Reset Time

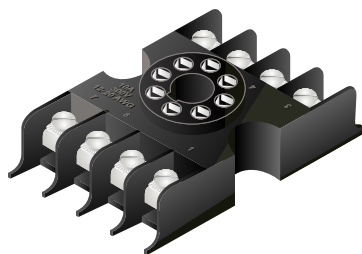
- During and After Timing: 75 milliseconds (May be reset during the timing period without false output)

### Mechanical:

- Mounting: Plug-in
- Termination: 8-pin (octal) standard or 11-pin plug-in
- Weight: 5 ounces (142 grams)
- Size: 3.5" x 2.4" x 1.8"

### Environmental

- Operating Temperature:  $-40^{\circ}$  C to  $+85^{\circ}$  C
- Storage Temperature:  $-40^{\circ}$  C to  $+85^{\circ}$  C



ACS-8, ACS-11  
Relay Socket

## ICM500 ORDERING INFORMATION

ICM SERIES	INPUT VOLTAGE	OUTPUT TYPE	DESCRIPTION
ICM500/500D	24 VAC	Single Pole 1 FORM C 8-pin	<b>Operating Modes:</b> • DOM, DOB, interval, single shot, DOM/DOB and repeat cycle  <b>Time Delays:</b> • Switch-settable delays from 1-1,023 seconds/minutes in multiples of .1, 1, 10 and 100
ICM501/501D	115 VAC		
ICM502/502D	230 VAC		
ICM503/503D	12 VDC		
ICM504	24 VDC		
ICM505	110 VDC		

**Note:** For 11-pin socket model, Double Pole, 2 FORM C, add suffix D. Example: ICM501D = 115 VAC, 11-pin Socket to be ordered separately as an accessory item **For 8-pin = ACS-8, For 11-pin = ACS-11**