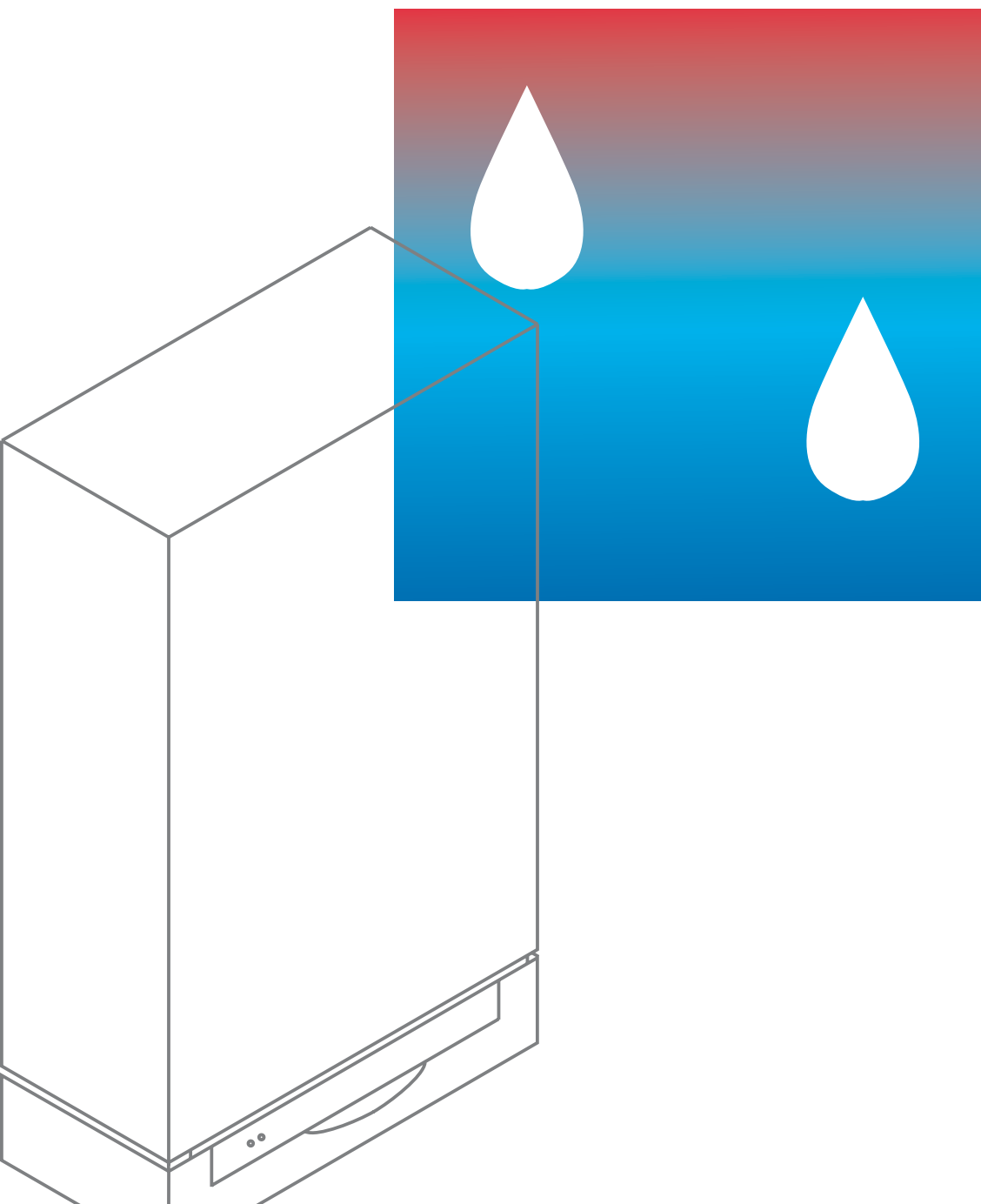


# VITODENS

**VIESSMANN**

Wall mounted gas fired condensing boilers  
Rated output range: 3.8 to 60.0 kW  
as multi-boiler system up to 240 kW





# Efficiency and convenience par excellence

Even though fossil fuel resources are finite, in future we will not be able to generate heat without gas. So, this calls for greater efficiency to reduce gas consumption.

When converting gas into heating energy, nothing rivals the efficiency of proven gas condensing technology. It can achieve an energy utilisation of up to 98 %.

## **The outlook for the environment is good**

Condensing technology reduces energy consumption and CO<sub>2</sub> emissions significantly, because efficient condensing boilers from Viessmann also utilise the latent heat in the flue gas and return this heat to the heating system.

## **Future-proof through biogas**

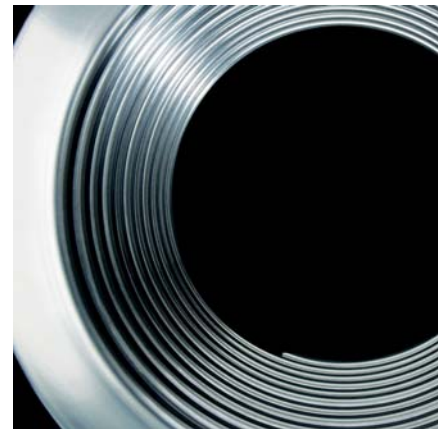
Condensing technology from Viessmann is future-proof, because biogas, made from sustainable raw material, can replace natural gas, step by step. With their Lambda Pro Control, gas fired condensing boilers from Viessmann are already prepared for the use of biogas.

## **Enjoying heating convenience**

Wall mounted gas fired condensing boilers from Viessmann feature compact dimensions and a quiet operation, making them ideal for installation near the living space. Their low outlay creates a first class price/performance ratio; and their special heating convenience regarding central and DHW heating make them highly desirable.

## **Consistently reliable quality**

Highly alloyed stainless steel is used for all condensing boilers and heat exchangers from Viessmann. This way, you can count on their lasting operational reliability and their long service life.



Inox-Radial heat exchanger made from stainless steel

## **Designed suitable for recycling**

All Viessmann products are designed with recycling in mind. The equipment is easy to dismantle, and all components used are clearly identified according to material type.



Vitodens 200-W  
4.8 to 35.0 kW

Compact  
dimensions,  
elegant design

# Efficient and attractive – with a price to match

With the Vitodens 200-W, Viessmann offers a wall mounted gas fired condensing boiler with an exemplary price/performance ratio, excellent heating and DHW convenience, compact dimensions and a timeless, elegant design.

## Standard efficiency up to 98 % (H<sub>s</sub>)/109 % (H<sub>i</sub>)

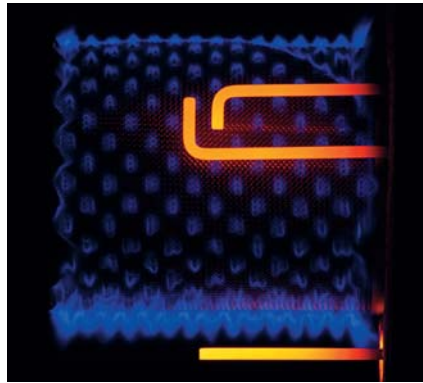
The Vitodens 200-W consumes less energy because it also utilises the latent heat in flue gas. Result: A standard efficiency up to 98 % (H<sub>s</sub>)/109 % (H<sub>i</sub>). It's clear that you'll reduce your heating costs and be more environmentally friendly in the process.

## Continuous efficiency

Stainless steel is the only choice where economy and a long service life are required. For this reason, the Vitodens 200-W is equipped with a stainless steel Inox-Radial heat exchanger. It offers the required reliability and ensures permanently high condensing efficiency.

## Extended modulation range

The new MatriX cylinder burner is the result of both in-house development and manufacture, it offers an extended modulation range of 1:4. The Lambda Pro Control combustion controller has now also been integrated. It automatically matches the combustion to changing gas types.



MatriX cylinder burner

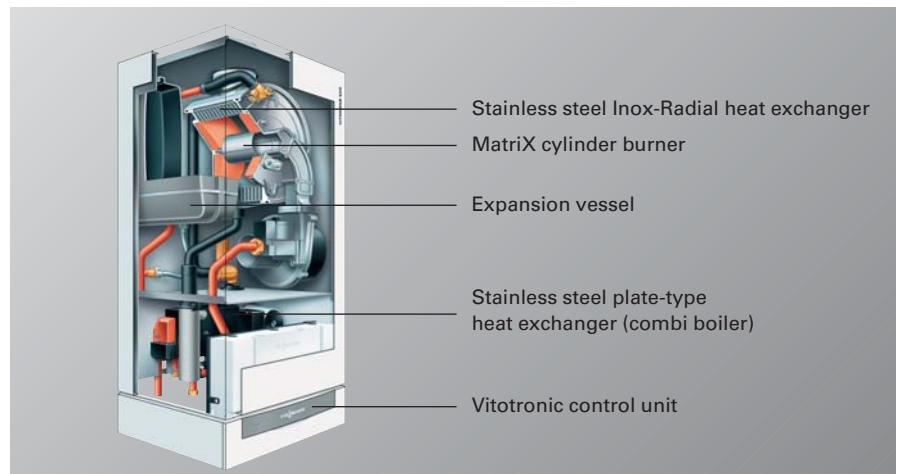
This ensures consistently high energy efficiency and offers security for the future in liberalised gas markets and where gases of biogenic origin are mixed with natural gas.

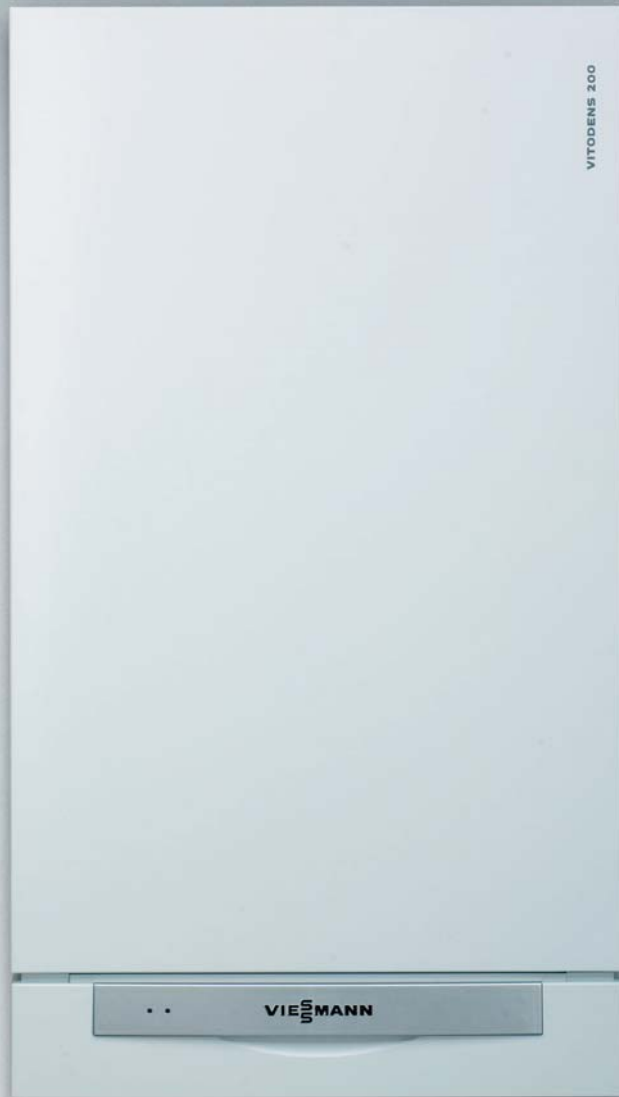
## High DHW convenience

The combi versions of the Vitodens 200-W are equipped with a DHW standby function. This ensures that DHW is always available at the required water temperature.

### Benefits at a glance:

- Wall mounted gas fired condensing boiler as central heating boiler: 4.8 to 35.0 kW as combi boiler: 6.5 to 35.0 kW
- Standard efficiency: Up to 98 % (H<sub>s</sub>)/109 % (H<sub>i</sub>)
- Wide modulation range of 1:4
- Stainless steel Inox-Radial heat exchanger
  - Self-cleaning of the smooth stainless steel surfaces because the flue gas and the condensate flow in the same direction
  - High corrosion resistance through high-grade stainless steel 1.4571
- Modulating MatriX cylinder burner – in-house development and manufacture
  - Low emissions
  - Long service life through stainless steel MatriX mesh
  - Optimised match between the heat exchanger and the burner
- High DHW convenience
  - Combi condensing boilers; generally with standby function
- Intelligent Lambda Pro Control as combustion controller
  - A change in the gas type requires no change of nozzle
  - Consistently high efficiency, even in case of fluctuating gas composition
  - Consistently low emissions
  - Low combustion noise through low fan speed





Vitodens 200-W  
17.0 to 60.0 kW

High output, wide  
application range



# The effective solution for high heat demand

Viessmann wall mounted condensing boilers are especially suitable for installation in apartment buildings and commercial or public buildings. For these, the Vitodens 200-W offers an affordable, space-saving solution – either as a single unit up to 60 kW or as cascade with up to four boilers and an output up to 240 kW.

## High output, low space requirement

The Inox-Radial heat exchanger made from stainless steel offers high output in the tightest of spaces. This enables a particularly efficient operation with a standard efficiency of up to 98 % ( $H_g$ )/109 % ( $H_i$ ).

## Cascade control

The Vitotronic 300-K cascade control unit regulates up to four Vitodens 200-W as a single heating



Freestanding cascade installation (in series) with self-supporting mounting frames

centre. This way, the boiler output is automatically matched to the heat demand. For you this means, subject to the prevailing demand, either one boiler modulates or all four boilers operate concurrently.

## Everything from one source

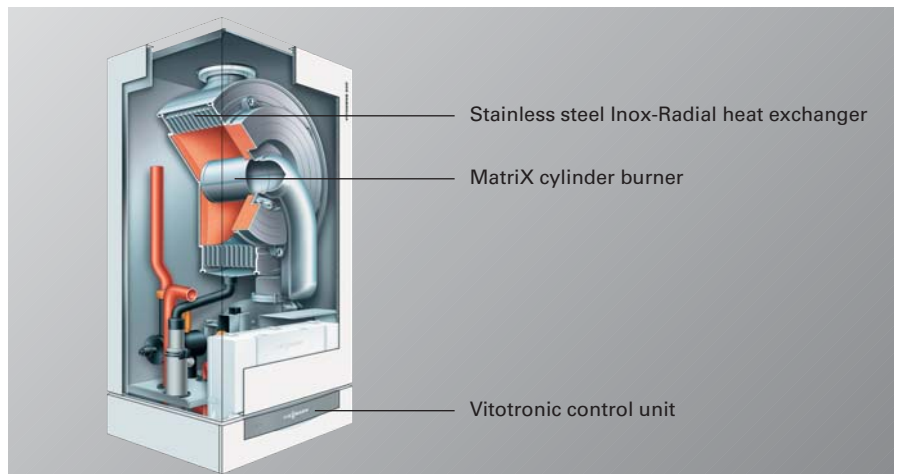
For the construction of cascade systems, Viessmann offers a perfectly matching system design, e.g. control units with up to four devices, fully insulated hydraulic cascades or flue gas headers.

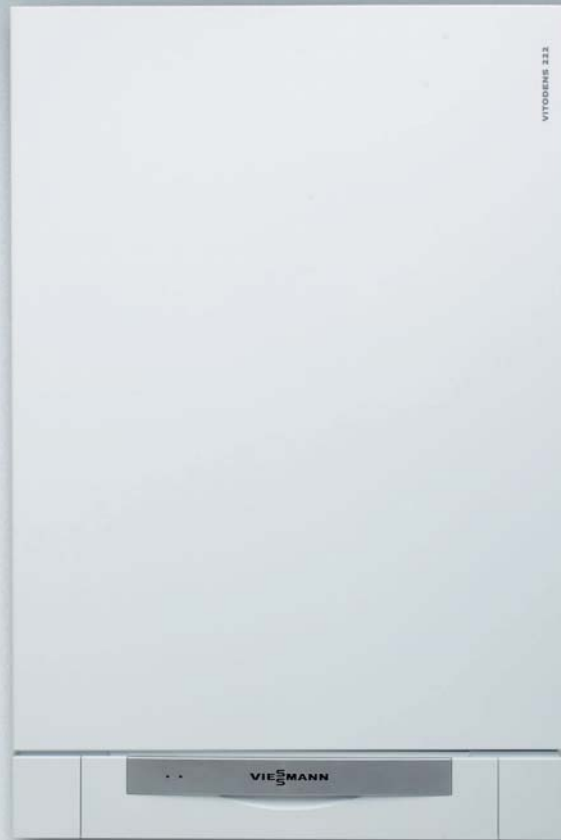
## Benefits at a glance:

- Wall mounted gas fired condensing boiler, 17.0 to 45 kW and 17.0 to 60.0 kW
- As multi-boiler system with cascade control and up to 4 Vitodens 200-W (up to 240 kW)
- Standard efficiency: Up to 98 % ( $H_g$ )/109 % ( $H_i$ )
- Stainless steel Inox-Radial heat exchanger
  - Self-cleaning of the smooth stainless steel surfaces because the flue gas and the condensate flow in the same direction
  - High corrosion resistance through high-grade stainless steel 1.4571
- Modulating MatriX cylinder burner – in-house development and manufacture
  - Low emissions
  - Long service life through stainless steel MatriX mesh
  - Optimised match between the heat exchanger and the burner
- Intelligent Lambda Pro Control as combustion controller
  - A change in the gas type requires no change of nozzle
  - Consistently high efficiency, even in case of fluctuating gas composition
  - Consistently low emissions
  - Low combustion noise through low fan speed



Freestanding cascade installation (as block) with mounting frame





Vitodens 222-W  
4.8 to 35.0 kW

Stainless steel  
primary cylinder  
for high DHW  
convenience



# Compact condensing boiler with integral stainless steel primary cylinder

With the Vitodens 222-W, Viessmann offers a particularly space-efficient wall mounted gas fired compact condensing boiler for high DHW demands. The heat cell comprises the proven stainless steel Inox-Radial heat exchanger, the modulating MatriX cylinder burner and the automatic Lambda Pro Control combustion controller.

## Primary cylinder for high DHW convenience

The integral 46 litre stainless steel primary cylinder offers the same DHW convenience as a separate 150 litre DHW cylinder with internal indirect coils. DHW is available immediately at the required temperature and with high consistency, even simultaneously at different draw-off points.



Inox-Radial heat exchanger made from stainless steel

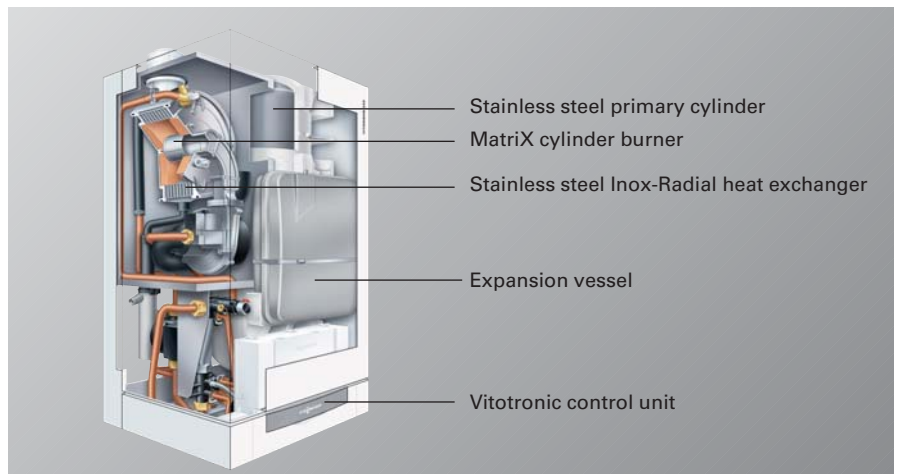
## Quick and easy installation

Apart from the primary cylinder, all other vital system components too, such as the heating water expansion vessel, pumps and safety valves are integrated and fully fitted. All that with a total weight of only 63 kg (6.5 to 26.0 kW) and in a casing that fits into a standard kitchen unit width of 600 mm.

The Vitodens 222-W is the ideal product, particularly in new build, as it can be installed before the screed is put down.

### Benefits at a glance:

- Very space-efficient gas fired compact condensing boiler with integral stainless steel primary cylinder, 4.9 to 35.0 kW
- Standard efficiency: Up to 98 % (H<sub>s</sub>)/109 % (H<sub>i</sub>)
- Stainless steel Inox-Radial heat exchanger
  - Self-cleaning effect through smooth stainless steel surfaces
  - High corrosion resistance through high-grade stainless steel 1.4571
- MatriX cylinder burner
  - Wide modulation range 1:4 with clean combustion
  - Long service life through stainless steel MatriX mesh – resistant to high temperature loads
- High DHW convenience:
  - N<sub>L</sub> factor up to 1.5 (equivalent to a separate DHW cylinder with approx. 150 litre capacity)
  - DHW immediately available at the required temperature
  - High constant output and minimum temperature fluctuations when drawing-off in parallel through outlet temperature control and modulating cylinder heating
- Intelligent Lambda Pro Control as combustion controller
  - A change in the gas type requires no change of nozzle
  - Consistently high efficiency, even in case of fluctuating gas composition
  - Quiet operation through low fan speed
- All components are accessible from the front; side clearances are not required. All system components, such as primary cylinder, heating water expansion vessel, pumps and safety valves are fully fitted





Vitodens 300-W  
3.8 to 35.0 kW

Compact yet  
powerful

# Wall mounted gas fired condensing boiler with outstanding efficiency

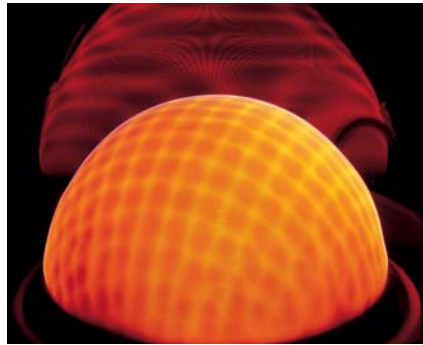
The top model amongst the Viessmann range of wall mounted gas fired condensing boilers. The MatriX gas burner and the stainless steel Inox-Radial heat exchanger ensure the high energy efficiency of this combination, as well as its long-term high heating convenience.

## Intelligent combustion control system

All Vitodens 300-W models are now equipped with the automatic Lambda Pro Control combustion controller. This has enabled the modulation range to be extended to 1:5.

## Low power consumption

The variable speed high efficiency DC pump is a new feature that reduces power consumption by more than 50 %.



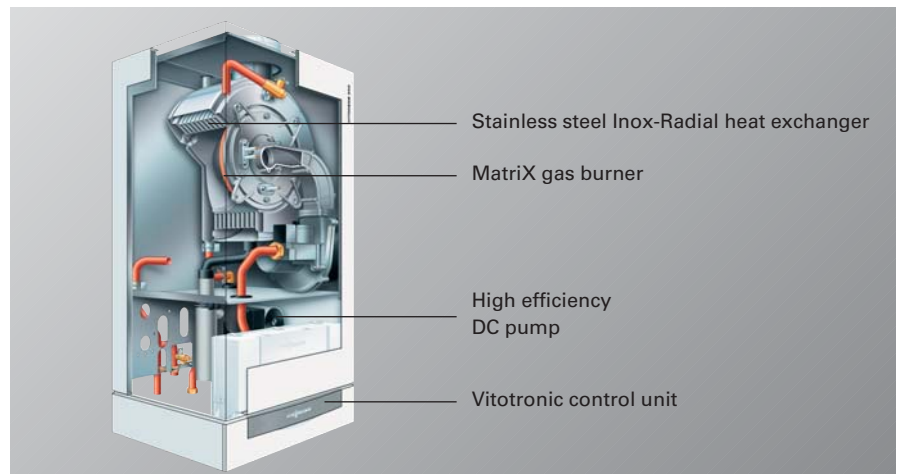
MatriX gas burner

## Integral diagnostic system

The new Vitodens 300-W is equipped with the SMART (Self Monitoring And Reporting Technology) diagnostic system that reports deviations from the permissible operating conditions and issues relevant early plain text messages. This enables easy maintenance and service scheduling, prevents failures and reduces repair costs.

### Benefits at a glance:

- Wall mounted gas fired condensing boiler as central heating boiler, 3.8 to 35.0 kW
- Standard efficiency:  
Up to 98 % (H<sub>s</sub>)/109 % (H<sub>i</sub>)
- Wide modulation range from 1:5; low cycling frequency, even when little heat is drawn off
- Stainless steel Inox-Radial heat exchanger
  - Self-cleaning effect through smooth stainless steel surfaces
  - High corrosion resistance through high-grade stainless steel 1.4571
- Modulating MatriX gas burner: High operational reliability and clean combustion
- Intelligent Lambda Pro Control combustion controller
  - No nozzle change for different gas types
  - Consistently high efficiency, even in case of fluctuating gas composition
  - Consistently low emissions
  - Low combustion noise through low fan speed
- Integral variable speed high efficiency DC pump reduces power consumption by more than 50 %
- SMART: Preventative maintenance message – high equipment availability, services can be scheduled





Vitodens 333-F  
3.8 to 26.0 kW

Compact design;  
fully fitted



# Compact and complete: DHW convenience included

The compact Vitodens 333-F boiler combines the benefits of the Vitodens 300-W with the high DHW convenience of a separate DHW cylinder.

## High energy efficiency

With the MatriX gas burner and the stainless steel Inox-Radial heat exchanger, the Vitodens 333-F offers top technology for many years of energy efficiency and high heating and DHW convenience.

The Lambda Pro Control and SMART modules, well-known from the Vitodens 300-W, plus the variable speed high efficiency DC pumps ensure lastingly high efficiency, reliable operation and low power consumption.



MatriX gas burner

## Integral primary cylinder

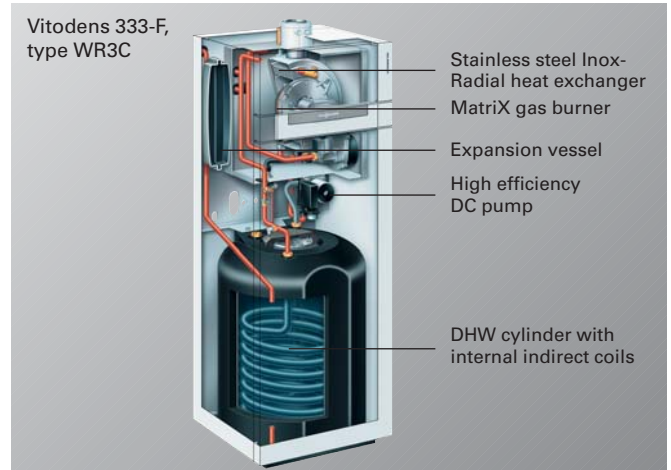
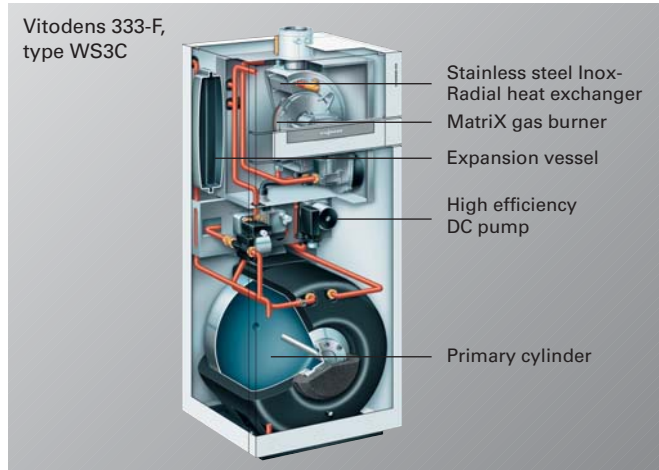
The Vitodens 333-F is available with different cylinder options. For example, type WS3C with an integral 86 litre primary cylinder, that offers the same DHW convenience as a separate DHW cylinder twice the size.

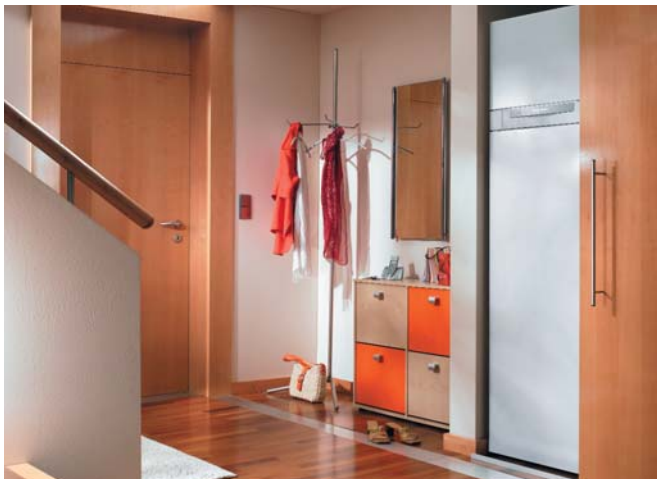
## Solution for hard water areas

The type WR3C, with its integral 130 litre cylinder with internal indirect coils, is a new development specially designed for hard water areas. The internal indirect coil with its smooth surface is not prone to attract limescale deposits.

### Benefits at a glance:

- Gas fired compact condensing boilers, Output type WS3C: 3.8 to 26.0 kW, type WR3C: 5.2 to 26.0 kW
- Standard efficiency: Up to 98 % ( $H_g$ )/109 % ( $H_i$ )
- $N_L$  factor type WS3C: 2.0 (26.0 kW),  $N_L$  factor type WR3C: 1.6 (26.0 kW)
- Wide modulation range from 1:5; low cycling frequency, even when little heat is drawn off
- Stainless steel Inox-Radial heat exchanger
  - Self-cleaning effect through smooth stainless steel surfaces
  - High corrosion resistance through high-grade stainless steel 1.4571
- MatriX gas burner: High operational reliability and clean combustion
- Intelligent Lambda Pro Control combustion controller
  - No nozzle change required for different gas types
  - Consistently high efficiency, even in case of fluctuating gas composition
  - Consistently low emissions
  - Low combustion noise through low fan speed
- Integral variable speed high efficiency DC pump reduces power consumption by more than 50 %
- SMART: Preventative maintenance message – high equipment availability, services can be scheduled
- Version for hard water areas through cylinder with internal indirect coil





Vitodens 343-F  
4.2 to 13/16 kW

Compact Energy  
Tower with  
solar cylinder



# Ready-to-connect Compact Energy Tower with integral solar cylinder, solar control unit and Solar-Divicon

## Complete gas fired condensing and solar heating system, ready to connect, in one compact casing

For modern heating with condensing and solar technology in detached houses, the Vitodens 343-F is an energy-efficient, environmentally responsible and advanced solution.

The Compact Energy Tower Vitodens 343-F offers: Energy-saving condensing technology, powerful DHW heating through a cylinder primary system and fully prepared for solar heating, all inside a casing with a footprint of only 677 x 600 mm.

The DHW cylinder, with 250 litre capacity, integrated into the Vitodens 343-F for integration into a solar heating system makes its case through a high solar coverage based on its large cylinder capacity and automatic heating suppression. The 16 kW booster function of this condensing boiler always safeguards high levels of economy, whilst simultaneously providing excellent DHW convenience.

## Future-proof through solar integration

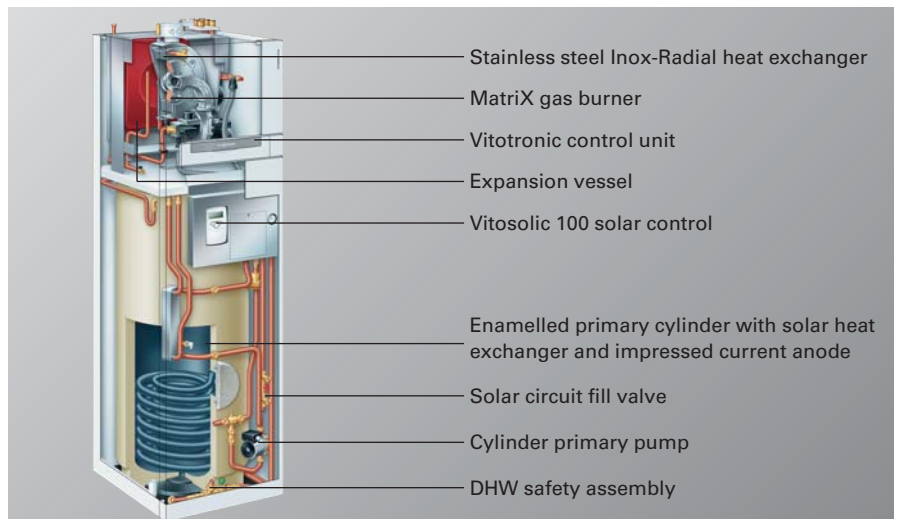
The Vitodens 343-F is fully prepared for solar operation, either now or in the future. Solar-Divicon and the Vitosolic 100 solar control unit are already fitted and ready for use. All functions are matched to one another and have been factory tested.

### Benefits at a glance:

- Compact Energy Tower condensing boiler with solar cylinder, Solar-Divicon and Vitosolic 100 solar control unit.  
Output: 4.2 to 13/16\* kW  
\* Booster function for DHW heating
- Standard efficiency:  
Up to 98 % ( $H_g$ )/109 % ( $H_i$ )
- Stainless steel Inox-Radial heat exchanger
  - Self-cleaning effect through smooth stainless steel surfaces
  - High corrosion resistance through high-grade stainless steel 1.4571
- MatriX gas burner: High operational reliability and clean combustion
- Intelligent Lambda Pro Control combustion controller
  - No nozzle change required for different gas types
  - Consistently high efficiency, even in case of fluctuating gas composition
  - Consistently low emissions
  - Low combustion noise through low fan speed
- Enamelled 250 litre cylinder with solar heat exchanger and impressed current anode
- Solar coverage up to 60 %
- Multi-connect plug-in system for quick assembly
- Side clearances for service purposes are no longer required, as all components are accessible from the front



Inox-Radial heat exchanger made from stainless steel



# Vitotronic: Technology that thinks for you



Vitotronic wall mounted control units provide you with every conceivable convenience. Once adjusted to suit your personal requirements, the Vitotronic runs many functions automatically. Individual adjustments are simplified by the clear operator interface with illuminated keys and large display showing plain text messages.

## Saving energy made easy

The Vitotronic automatically changes over between winter and summer time and responds, as a weather-compensated control unit, to external temperature fluctuations. All prepared convenience functions, such as party mode (should you be having a late night), economy or holiday programs, can be accessed at the press of a button: Both on the boiler and on the remote control in your living room.



Vitotronic 100  
for constant temperature  
operation



Vitotronic 300 – clarity is vital:  
Menu-guided programming unit  
with plain text display

## Options for the future

The Vitotronic control unit is designed to accommodate future modifications. Should you wish to extend your home in the near future, or link solar collectors to your heating system, the Vitotronic will always keep up.

Function	Vitotronic 100	Vitotronic 200
Reacts to changes in room temperature	■	—
Reacts to changes in outside temperature	—	■
Switching times for central heating and DHW heating	—	■
Switching times for central heating only	■*	■
Automatic summer/winter changeover	—	■
Party key (extends heating time)	■*	■
Economy key (short-term setback)	■*	■
Holiday program (long-term setback)	■*	■
Small display with symbols	■	—
Large display with plain text messages	—	■
Energy saving functions	—	■

\*) only with separate Vitotronic 100 clock thermostat (in the living space)

# Everything under control – even from afar

The Vitodens wall mounted gas fired condensing boilers are designed for linking up with communication systems.

## Remote monitoring and control via GSM/mobile phone networks and Vitocom 100 ①

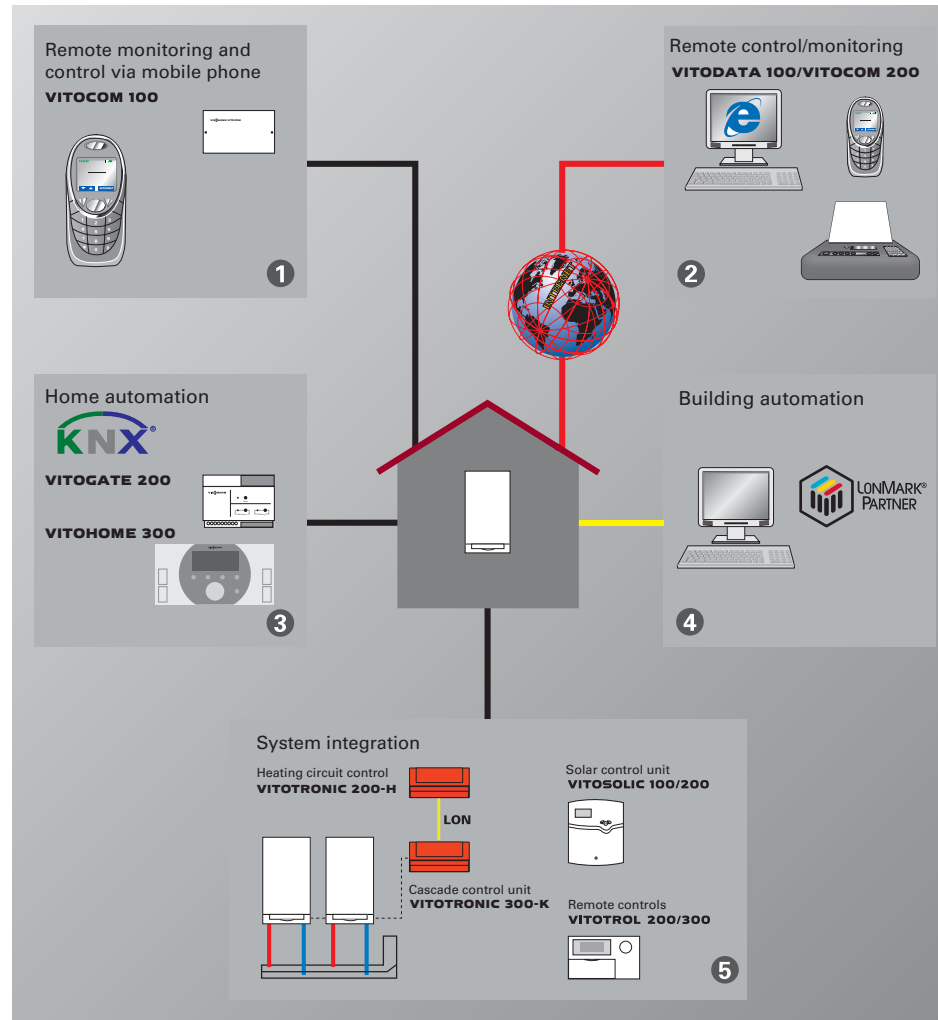
The affordable remote monitoring of wall mounted boilers in detached and two family homes. With this control unit you can switch your system ON or OFF while you are away.

## Service via the internet with the Vitocom 200/Vitodata 100 ②

The Vitocom with Vitodata 100 enables the remote monitoring of your heating system round the clock by your heating contractor. System users can also control their system easily via the internet.

## Building automation ③

- **Vitogate 200** enables a data exchange with external operating and monitoring devices based on the Konnex/EIB communication standard.
- **The Vitohome 300** enables a wireless individual room temperature control system for central heating with radiators and/or underfloor heating:
  - For a complete control of DHW and central heating
  - Easy commissioning and easy to retrofit
  - Savings in heating and electricity bills whilst raising the individual room comfort.



## Integration into building automation ④

All Vitodens wall mounted boilers are prepared for direct integration into LON building management systems.

## System integration ⑤

Information and data exchange between all Viessmann components. Vitosoft and laptop connections support your heating contractor during commissioning, maintenance and service.



Vitohome 300 home automation

# Installation and service-friendly modular design



The Vitodens wall mounted gas fired condensing boiler offers much more than the immediately obvious benefits that are important to you. You also profit from Viessmann's resolutely modular design applied to all wall mounted equipment.

## Simple and time-saving

All wall mounted units are modular and offer a high degree of continuity and uniformity of components. For your local heating contractor, this begins with the simple installation of the wall mounted boiler with standard, uniform fixings and installation aids. All wall mounted units have the same type of Aqua-plate with the multi connect system, ensuring simple and fast installation. All water routes are located at the back of the equipment. As a result, all parts can be accessed and replaced from the front, so no need to remove it from the wall. For users, this means: A reduction in maintenance costs.

Due to the easy access, there is no need to worry about service clearances. It is possible to install the boiler in a corner or a recess.



Vitodens 300-W with sub-mounting kit of the same design

Quick installation without special tools due to the multi-connect system

# Everything from one source

Viessmann system design ensures that all parts fit together perfectly and guarantees the consistent functional reliability of the complete heating system – from the wall mounted boiler to the burner, the control unit, the DHW cylinder and sub-mounting kit, even the connection fittings.

## Sub-mounting kit – heating circuit distributor for wall mounted gas fired boilers

The sub-mounting kit offers the option of a convenient connection of a combined underfloor and radiator heating system. The sub-mounting kit design matches that of the wall mounted boilers. Together with the wall mounted gas fired boilers, it creates a single visual unit, making integration in the living space an appealing prospect.



## High quality, comprehensive product range

From radiators and underfloor heating systems via valves, flue gas systems and expansion vessels through to DHW cylinders for higher DHW demand. All components in the Vitoset accessory range from Viessmann are perfectly matched to one another. The high quality standards that distinguish Viessmann heating systems apply to all other components assuring you of maximum economy and dependability. Your heating contractor enjoys real benefits when designing, installing and maintaining your system.



Vitodens 200-W and the Vitocell 100-W DHW cylinder below with casing supplied as accessory

Everything fits:  
Viessmann  
components for all  
heating peripherals

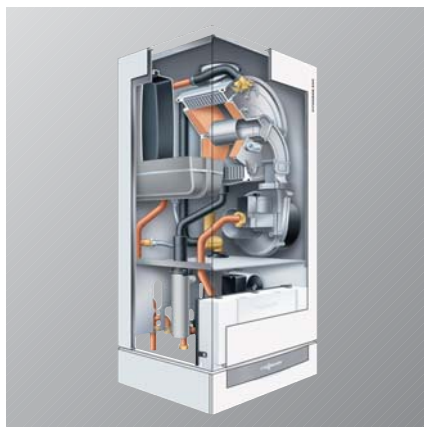


Supplement consistency, perfectly matched: Vitoset range of accessories



# Complete range from 3.8 to 240 kW

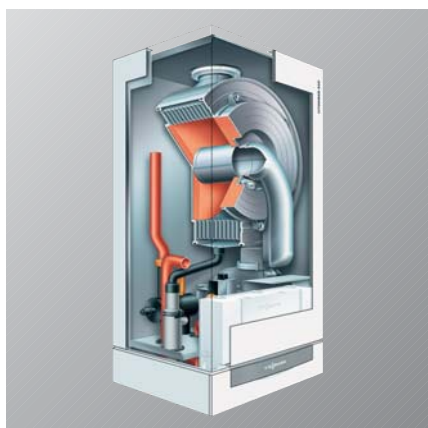
Viessmann offers a complete range of wall mounted condensing boilers to suit every demand, every need and every budget. With a standard efficiency of up to 98 % ( $H_s$ )/109 % ( $H_i$ ) and a price/performance ratio that will convince you, too.



Vitodens 200-W boiler  
4.8 to 35.0 kW



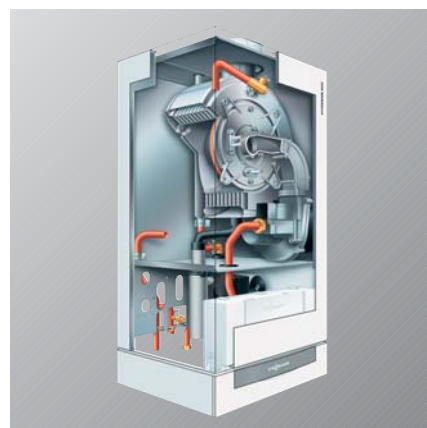
Vitodens 200-W combi boiler  
6.5 to 35.0 kW



Vitodens 200-W boiler  
17.0 to 60.0 kW – in a cascade up to 240 kW



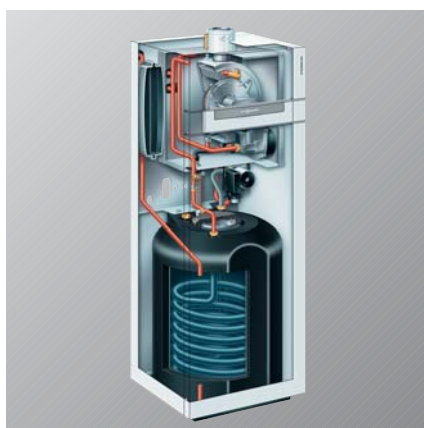
Vitodens 222-W  
4.8 to 35.0 kW with integral stainless steel  
primary cylinder (46 litre capacity)



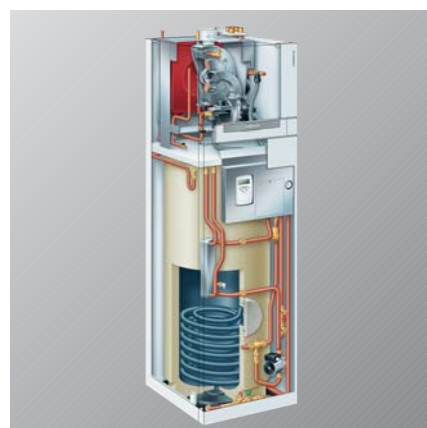
Vitodens 300-W boiler  
3.8 to 35.0 kW



Vitodens 333-F  
3.8 to 26.0 kW with integral primary cylinder  
(86 litre capacity)



Vitodens 333-F  
5.2 to 26.0 kW with integral DHW  
cylinder with internal indirect coils  
(130 litre capacity)



Vitodens 343-F  
4.2 to 13/16\* kW with integral solar cylinder  
(250 litre capacity)  
\* Booster function for DHW heating



		<b>Vitodens 200-W</b> Gas fired condensing wall mounted boiler	<b>Vitodens 222-W</b> Gas fired condensing compact boiler	<b>Vitodens 300-W</b> Gas fired condensing wall mounted boiler	<b>Vitodens 333-F</b> Gas fired condensing compact boiler	<b>Vitodens 343-F</b> Compact Energy Tower with solar cylinder
<b>Rated output</b>		<b>Boiler</b> 4.8 to 60.0 kW as cascade up to 240 kW  <b>Combi boiler</b> 6.5 to 35.0 kW	<b>Compact boiler</b> 4.8 to 35.0 kW with primary cylinder	<b>Boiler</b> 3.8 to 35.0 kW	<b>Compact boiler</b> 3.8 to 26.0 kW with primary cylinder  5.2 to 26.0 kW with internally heated DHW cylinders	<b>Compact boiler</b> 4.2 to 13/16* kW
<b>Operating mode</b> Open flue and balanced flue operation		■	■	■	■	■
<b>Vitotronic control unit</b> Room temperature dependent or weather-compensated		■ + Cascade control unit Vitotronic 300-K	■	■	■	■
<b>DHW heating</b> <b>Combi/compact boiler</b>		Comfort plate-type HE with comfort sensor	Primary cylinder 46 litre capacity	—	Primary cylinder 86 litre or DHW cylinders 130 litre capacity	DHW/ solar cylinder 250 litre capacity
<b>Fuel</b> Natural gas or LPG		■	■	■	■	■
<b>Dimensions</b>	Length	360 <sup>1)</sup> /380 mm	480 mm	360 <sup>2)</sup> /380 mm	588 mm	677 mm
	Width	450 <sup>1)</sup> /480 mm	600 mm	450 <sup>2)</sup> /480 mm	600 mm	600 mm
	Height	850 <sup>1)</sup> /850 mm	900 mm	850 <sup>2)</sup> /850 mm	1387 <sup>3)</sup> /1600 <sup>4)</sup> mm	2104 mm
<b>Weight</b>	kg	43, 45, 47 <sup>1)</sup> /65	60, 63, 67	48 to 50	86 <sup>3)</sup> /147 <sup>4)</sup>	240
<b>Standard efficiency up to</b>		98 % (H <sub>s</sub> )/109 % (H <sub>i</sub> )	98 % (H <sub>s</sub> )/109 % (H <sub>i</sub> )	98 % (H <sub>s</sub> )/109 % (H <sub>i</sub> )	98 % (H <sub>s</sub> )/109 % (H <sub>i</sub> )	98 % (H <sub>s</sub> )/109 % (H <sub>i</sub> )
<b>Emissions below the limits set for the "Blue Angel"</b>		■	■	■	■	■
<b>Inox-Radial heat exchanger made from stainless steel</b>		■	■	■	■	■
<b>Modulating MatriX cylinder burner</b>		■	■	—	—	—
<b>Modulating MatriX gas burner</b>		—	—	■	■	■
<b>Modulation range</b>		1:4	1:4	1:5	1:5	1:4
<b>Variable speed AC fan</b>		■	■	■	■	■
<b>Lambda Pro Control</b>		■	■	■	■	■
<b>Integral heating circuit pump</b>		Two-stage <sup>1)</sup>	Two-stage	Variable speed high efficiency DC pump	Variable speed high efficiency DC pump	Three-stage
<b>Expansion vessel</b>		10 l <sup>1)</sup> , integral	10 l, integral	10 l <sup>2)</sup> , integral	12 l, integral	10 l, integral

\*) Booster function for DHW heating

1) 4.8 to 35.0 kW

2) 3.8 to 19.0 kW

3) Vitodens 333-F (type WS3C) with primary cylinder

4) Vitodens 333-F (type WR3C) with internally heated DHW cylinder

# Our comprehensive product range sets new standards



Viessmann offers future-oriented heating systems for oil, gas, solar, wood, natural heat, qualifying them as an independent partner concerning all energy questions.



Our heating systems cover all output demands from 1.5 to 20000 kW – from apartments to large industrial plants. Biomass systems up to 13000 kW.



Our product range, categorised in three steps according to price and technology, offers the right solution for every demand and every budget.



Viessmann matches up all products and consequently offers an optimum level of efficiency – from the initial design to system operation.

Wall mounted boilers for oil and gas, employing conventional and condensing technology



Heating system components, from fuel storage to radiators and underfloor heating systems



Köb  
biomass boilers  
from 35 to 1250 kW



Mawera  
biomass systems  
from 110 to 13000 kW

Energy systems for the utilisation of environmental energy, solar energy and sustainable fuel supplies

Freestanding boilers for oil and gas, employing conventional and condensing technology

For three generations, the Viessmann family business has been committed to generating heat conveniently, economically, with environmental responsibility and in accordance with the prevailing demand. With a number of outstanding product developments and problem-solving solutions, Viessmann has created many milestones that have frequently made them the technical pacemaker and trendsetter for their entire industry.

Viessmann's orientation is decidedly international – it maintains 12 factories in Germany, Austria, France, Canada, Poland and China, sales organisations in Germany and 35 other countries, plus 120 sales offices around the world.

Responsibility for the environment and society at large, fairness in dealing with business partners and employees as well as striving for perfection and the highest efficiency in all business processes are core values for Viessmann. This applies to every individual employee and therefore to the whole company. It offers its customers, with the multitude of its products and associated services, the particular benefit and added value of a strong brand.



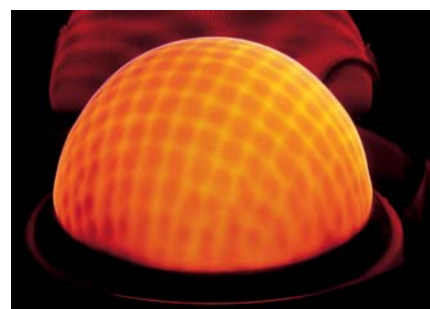
The new training and information centre at the Viessmann Academy

Research and development

Production of wall mounted gas fired boilers



Innox-Radial heat exchanger made from stainless steel for reliable utilisation of condensing technology



MatriX gas burner for extremely low emissions

Viessmann Group

**VIESSMANN**  
climate of innovation

**weso**  
Das Plus beim Guss

**SATAG**  
Wärme aus der Natur

**MAWERA**  
...aus Holz wird Energie

**KOB**  
Wärme aus Holz

**Your local contractor:**

Viessmann Werke  
35107 Allendorf (Eder)  
Tel. +49 6452 70-0  
Fax +49 6452 70-2780  
[www.viessmann.com](http://www.viessmann.com)