



EdAdvance

Educate • Collaborate • Innovate

2022-2023 ANNUAL REPORT

www.edadvance.org



Promoting the success of school districts and their communities.

Culture

We are committed to building an internal climate of cooperation and “Systemness” so that everyone is invested in the success of the entire organization, continuously supporting each other in the pursuit of our mission of service.

What it looks like...

- Being part of something bigger than yourself.
- Commitment and focus on the agency's mission.
- Treating others the way you would like to be, or expect to be, treated.
- Always having each other's back.
- Working with a sense of pride and belonging.
- A collaborative environment built on trust and the pursuit of a common good and goal.
- A willingness to communicate, collaborate, and interact in a positive and culturally responsive manner.
- Retaining qualified and committed talent.

Connection

We actively listen to and personally engage with our constituents and colleagues to ensure that we have strong partnerships and a true understanding of our region and customers.

What it looks like...

- Building quality relationships both internally and externally.
- Engaging with, listening to, and learning from colleagues and constituents.
- Exploring and encouraging partnerships inside and outside the agency.
- Meetings with a purpose, agenda, outcomes, and effective facilitation.
- Consistent and transparent outreach to both employees and customers.
- Regular and meaningful in-person contact.
- Ensuring that communication in all its forms is a reciprocal, engaging process.

Customization

We provide flexible solutions, services, and supports tailored to the unique needs of the school districts and communities we serve and at the level of excellence they expect.

What it looks like...

- Always finding a way to get to “yes” by never starting with “no.”
- Reaching across the agency to gather the necessary resources to meet customer needs and expectations.
- Attracting and hiring qualified and committed talent at all levels.
- Listening to the needs of stakeholders and colleagues, and responding directly to them.
- Providing a range of options and solutions.
- Remembering being right is NOT a strategy.
- Understanding that meeting customer needs is synonymous with agency, program, and individual success.

Redefining what a RESC can be.



EdAdvance is the Regional Educational Service Center (RESC) in western Connecticut, providing programs and services to 30 member school districts and their communities.

Established under Connecticut General Statutes 10-66, a-m, each of the six RESCs in Connecticut are governed by a Board of Directors whose members are appointed by their local Boards of Education.

Message from the Executive Director

It is once again my great honor and privilege to announce the publication of the EdAdvance Annual Report. Each year I try to do three things in one page or less: share thoughts on the state of our organization, highlight our most recent accomplishments, and set expectations for the upcoming year. To summarize all three at once, I will borrow and alter a quote originally attributed to Mahatma Gandhi: ***“Be the change that you wish to see in the world northwest corner of Connecticut.”*** I believe this statement captures the spirit and energy of our past and future efforts at EdAdvance.

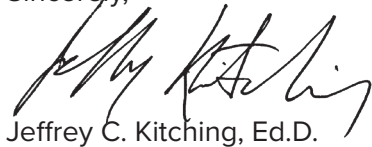
Throughout 2022-2023, leaders from all departments worked with the Executive Team to gather staff feedback regarding the Agency’s mission and vision. The result of that collaborative effort is a new “Three Cs” document that serves as the blueprint for all EdAdvance employees for integrating Culture, Connection, and Customization into all aspects of our work both internally and externally. The document includes specific behaviors that exemplify each of the C’s, and I could not be more proud of the thoughtful reflection, dedication, and effort of the team of over 60 leaders from across our organization that went into producing this framework. We are excited to include the document with this report (facing page).

While we worked to articulate those foundational principles, we simultaneously were acting on them throughout our region. With the purchase of two properties in Torrington last winter, we secured the space we needed to accommodate expansion of many departments and the added staff capacity for new initiatives. The first property will be known as the **EdAdvance Regional Learning Center (RLC)** and was established after purchasing a former elementary school building through a partnership with the city of Torrington and the Torrington Public Schools. The 68,000-square-foot building underwent a significant renovation to provide updated space for our Steps Middle and High School, serving students with special needs. The RLC is also the new home for our Adult Education staff and some of the programs and courses they offer. Renovations will continue into this year in parts of the building as we prepare the RLC to house the newly established **College and Career Accelerator**. This innovative program will provide high school students in the region’s northwest corner with access to dual enrollment courses, work studies, and career pathways needed within segments of the region’s workforce. The second purchased property was the site of a former church and convent on Grove Street. At this location, construction and renovation has already begun to add a new classroom building to an existing structure, which will become the **EdAdvance Early Childhood Center**. This will be the new home of our Torrington Head Start, Early Head Start, and other Early Childhood programs and services for regional providers and families.

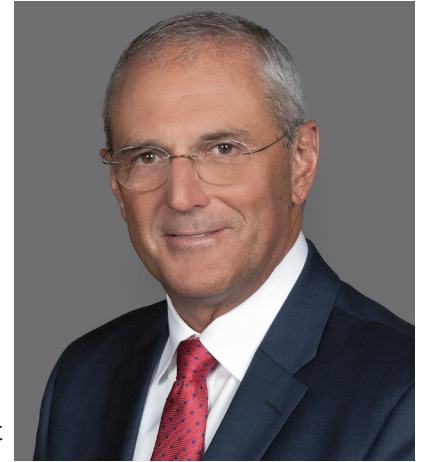
Finally, EdAdvance also made a major commitment to help our region address the dramatically increased need for social, emotional, and mental health support for students in our school districts by establishing the new **Department of Social/Emotional and Mental Health Services**. In December, the Agency was awarded an \$8.7M federal grant to provide school-based mental health professionals to support students and families in 32 schools across the northwest corner of our region. In June, we officially welcomed a new director for the department to organize the tremendous capacities EdAdvance already has in place and then assist schools with customized solutions to address the needs of students across a wide range of supports and services.

I am proud of EdAdvance’s progress and our staff’s ongoing commitment to serving our region’s school districts and communities. I look forward to another year of partnerships and progress as we build the change we wish to see across northwest corner.

Sincerely,



Jeffrey C. Kitching, Ed.D.
Executive Director



Families and Children

2022-2023 Highlights



BASES (Before and After School Extended Services)

EdAdvance BASES (Before and After School Extended Services) offers licensed, quality, year-round before and after school programs as well as full-day summer programming and specialized enrichment programs for students K-8.

- *Provided care for about 400 children at 10 program sites*
- *Provided scholarships and tuition assistance to all eligible families*
- *Partnered with Torrington Public Schools to provide age specific daily enrichment program free to families in the BASES+ Enrichment Program at Vogel Wetmore*
- *Received a National PAL Mentoring grant for the 5th year*
- *Received a State of CT After School Grant for the 16th year in a row*
- *Received ARP ESSER After School Enhancement and Expansion Grants via CSDE*
- *Received a CSDE Summer Program Enhancement Grant for the summer of 2022*



Behavioral Services Program

The Behavioral Services Program (BSP) provides adaptive daily living and behavior supports to DDS-qualified children, adolescents, and young adults, ages 8-21 years old, and their families. Staff, parents, and siblings, with the expertise of a behaviorist, actively participate with their supported family member in a variety of positive skill and esteem building pursuits including community events, volunteer opportunities, and recreational activities.

- *Continued to provide individuals with opportunities to skill build to increase independence and enjoy close relationships with department staff while working towards goals*

Birth to Three Services

Birth to Three provides comprehensive early intervention services (IDEA Part C) to infants and toddlers with developmental delays. The program's goal is to support and strengthen a family's capacity to help their child grow and develop in their natural setting. Our autism-specific program offers assessment, intensive home visitation, and behavioral supports by qualified staff. Birth to Three works closely with families and school districts to ensure a smooth transition to pre-kindergarten services at age three.

- *Increased referrals and number of monthly sessions by 15%*

Danbury School Readiness

Danbury School Readiness offers accessible, affordable, and quality early childhood programs at 11 sites in the greater Danbury area. Activities are designed to meet the needs of the children and their families. Programs are accredited by the National Association for the Education of Young Children (NAEYC) or Head Start approved. We offer professional development opportunities for early childhood teachers on a variety of topics as well as transition to kindergarten events and supports for family child care providers and center directors.

- *Implemented One Book, One Community which featured a weeklong literacy immersion for preschoolers and their families*

Day Support Options Program

This program is community-based and focuses on age appropriate, person-centered activities of interest for people with developmental disabilities in the northwest corner. DSO is designed to offer engaging, enriching, and fun things to do in Litchfield County. Paid work opportunities are also available to interested individuals.

- *Hosted several events during the year that were open to all Community Services individuals supported and staff*
- *Collaborated with Positive Expression on an art exhibit where individuals supported and staff created abstract art pieces that were displayed at the Brass Mill Mall in Waterbury that culminated in the reading of a proclamation and presentation of citations from the Connecticut General Assembly*

Early Childhood Consultation and Training

Our Early Childhood consultants provide high-quality training, consultation, and coaching to school districts, early care and education staff, community partners, and family providers serving infants, toddlers, preschoolers, and families. Consultation is focused on curriculum, assessment, child development, environments, NAEYC accreditation, and best practices in meeting the needs of very young children, ages 0-5.

- *Received funding from the CT Office of Early Childhood to deliver professional development, coaching/mentoring, and accreditation support to early childhood teachers/staff in our region*
- *Increased our presence in the southern part of our RESC region using WorkSpace CT as a hub for professional development*
- *Hosted a team from Singapore to showcase our early childhood programs and home visitation services*

Family Child Care Network

The Litchfield County Family Child Care Network is a grant-funded project supporting nearly 30 family child care providers in northwest Connecticut

through professional development and best practices in business. The network has created ongoing opportunities for family child care providers to connect with each other and with EdAdvance and other community-based resources and expertise to enhance the quality of their programs.

- *Supported solely by private funders including Northwest Community Bank, American Savings Bank, the Berkshire Taconic Community Foundation, and the Community Foundation of Northwest CT*



Family Resource Centers

The Family Resource Centers (FRC) provide school-based family support programs in Plymouth and Torrington to strengthen the bond between the family and school, nurture the healthy development of the family, and prepare children for school.

- *Created and implemented well-attended Kindergarten transition nights with Plymouth Public Schools and the Plymouth School Readiness Council funded by Thomaston Savings Bank*

- *Remained an active part of the Torrington school community at Vogel-Wetmore Elementary School and Southwest Elementary School with programming ranging from playgroups and lunch bunches by day, to after school programs, adult education, and parenting programming at night*

Head Start: Prenatal To Five

Head Start provides an array of comprehensive, quality services, including health, nutrition, parent engagement, education, and mental health to children ages three to five and their families. The program's vision is "each child and family leaves Head Start healthy, eager to learn, and ready for success." Program staff works closely with families to ensure that each child has the skills and knowledge necessary to be successful in kindergarten. Early Head Start offers the same comprehensive services through a home-based model for expectant mothers and families of children ages birth to three.

- *Established an innovative collaboration with the Department of Children and Families (DCF) by being the first entity to house a DCF staff member on-site, ensuring seamless coordination and enhanced support for the children and families we serve in the Torrington area*
- *Provided essential services and support to 256 children aged birth to five years within Litchfield County, contributing to their healthy development and early education*
- *Successfully worked with Behavioral Services to secure a Board-Certified Behavior Analyst (BCBA) who collaborated closely with our teaching staff, offering specialized support to children requiring additional assistance, thereby fostering an inclusive and enriching learning environment*

Individual Supported Employment

This community-based competitive employment program uses a person-centered approach to provide job site support and services to individuals with disabilities.

- *Continued to be successful in competitive employment placements for individuals working alongside typical employees with minimal supports*

Individualized Day Program

This program supports adults with developmental disabilities in the community to participate in local community events, volunteering, vocational or recreational activities.

- *Participation in a multitude of department-wide activities with individuals and staff of various ages and walks of life*



McKinney-Vento Homeless Outreach

The McKinney-Vento liaison partners with area school districts to ensure compliance with the federal Homeless Assistance Act. The liaison works directly with school social workers and community providers to support the unique and varied needs of children and youth experiencing homelessness.

- *Conveyed a smaller school consortium (Explorations, Newtown, Plymouth,*

Thomaston, Region 1, Region 6, and The Gilbert School) to help with policies and procedures in regards to the McKinney-Vento Law

- *Attended the National Conference on the Education of Homeless Children and Youth with three Torrington Public School social workers where we gained valuable information and resources on student homelessness*

- *Increased enrollment from 45 families in the greater Torrington area to close to 75 families with increased funding from the Office of Early Childhood*
- *Successfully managed this large home visitation contract that included four subcontractors in our RESC region*

Parents as Teachers

The EdAdvance Parents As Teachers program uses this curriculum and others, such as Touchpoints, Circle of Security and more, to deliver a national evidence-based model providing weekly home visits, monthly group activities, and resource connections for families of young children. Mothers enroll during pregnancy or with very young children, there is a father engagement component, and families can remain in the program through the child's kindergarten year. The model focuses on supporting the families' health and social emotional well-being.

Supported Living Services

Supported Living Services offers quality supports for adults with developmental disabilities in their living environments and community through flexible, creative planning and community integration.

- *Continued to build skills while engaging with peers and staff to increase independence and adaptive daily living skills*



Support Services

2022-2023 Highlights



Events Planning and Conference Services

EdAdvance's Events Planning and Conference Services department provides a variety of events and conference planning services for our districts, their communities, and local businesses.

- *Held staff retreats/meetings at our facility for Litchfield, New Hartford, Region 6, and Torrington school districts*

Fingerprinting Services

EdAdvance provides LiveScan fingerprinting services in compliance with Connecticut state law. With the "portable" LiveScan fingerprint machine, fingerprinting is performed onsite at our Litchfield Office, but also at our Bethel location, the WorkspaceCT, and at multiple private schools in the Northwest Region such as The Forman School and The Hotchkiss School.

- *Fingerprinted 1,095 school staff, substitute teachers, student teachers, contractors, and volunteers for our member school districts, charter schools, and private schools*
- *Expanded fingerprint services onsite via the portable LiveScan fingerprint machine to private schools.*

Food Services

The Food Services program works collaboratively with school districts and the Connecticut State Department of Education Office of Child Nutrition in administering school food service programs to improve the health and education of children. Emphasis is placed on providing needed services to districts in a cost-effective manner while maintaining compliance with USDA and state requirements. We also consult with districts to assist with state reviews, staffing assessments, menu planning, staff training, and more.

- *Expanded services to Litchfield Public Schools, Colebrook School, and Saint John Paul the Great Academy*
- *Served 30 schools in 12 districts*
- *Offered summer meals to children in the region at*

camps and other congregate sites as well as non-congregate meals to families

Grants Services

EdAdvance's Grants department works collaboratively with various agency programs and with diverse school and community partners to identify grants and develop, write, and/or review grant proposals. We also research federal, state, and foundation funding opportunities that might benefit different departments, and track grant submissions and decisions.

- *Awarded Increasing School-Based Mental Health Services in Rural Northwestern CT (SBMHS-NW CT) grant funded by the U.S. Department of Education for 5 years for total of \$8,727,968*

Human Resources Services

In addition to providing Human Resources support to our agency, our HR team offers general HR support tailored to the specific needs of our districts. By partnering with us, the districts gain access to our expertise, and best practices, all while reducing HR related costs. Our Human Resources team is dedicated to providing reliable, and customized HR solutions related to employee relations, compliance, and special projects. We facilitate the HR/Operations Professional Networking group.

- *Streamlined and/or developed several processes for districts to make onboarding quicker and more efficient for both the applicant and the district*
- *Provided support and guidance from an HR perspective for districts in transition*



Information Technology Services

EdAdvance's Information Technology Services department offers tailored solutions for schools, small towns, and not-for profit agencies. We provide a wide range of services including hardware and software support, IT consultation & training, equipment decision-making, security audits, and network upgrades. Our friendly and creative technicians use their skills to customize services and solutions for each customer's specific needs.

- *Started work with The Gilbert School to provide full-time technology support*

Marketing and Communications

EdAdvance provides innovative multi-media marketing & communication (MarCom) services to develop and enhance a school's, district's, or organization's brand visibility and the impact of print and web assets for all of their constituent groups — employees, students, parents, and community partners.

- *Developed branding for CSDE's Learner Engagement & Attendance Program (LEAP)*
- *Collaborated with Professional Learning Services to develop a social media campaign for CSDE Attendance Awareness campaign*

Transportation

Specializing in transporting special needs students, utilizing a fleet of 96 vehicles and 84 drivers. We are equipped to provide safe, reliable, and cost-effective services. We provide transportation for our member districts and surrounding communities.

- *Started developing the newly formed Regional Transportation Cooperative, comprising Bethel, Brookfield, Region 14, Region 15, and Watertown to exclusively provide transportation to these districts*

TRED (Transportation Reaching Every Direction)

TRED provides free transportation services to eligible Department of Mental Health and Addiction Services (DMHAS) clients in northwestern Connecticut.

- *Received a funding increase from DMHAS that allowed us to hire another driver and increase the number of rides we provided for the Recovery and Wellness program at the Torrington DMHAS office*
- *Provided transportation for 19 individuals to long term substance abuse treatment*



Teaching & Learning

2022-2023 Highlights



ACCESS K-8

The ACCESS K-8 School offers a structured environment for students with internal and external behavioral challenges which have significantly impacted their educational progress. The School provides therapeutic intervention and skill development to improve academic, social, and behavioral functioning. ACCESS K-8 School is comprised of special education teachers, social workers, board-certified behavioral analysts, and behavior support staff who work as a coordinated team to provide structure and reinforcement to help students experience success and enjoyment within the school setting. The school team maintains regular contact with the student's families and district to ensure that the Individual Education Program (IEP) is improving the student's independent functioning and learning.

- *Successfully transitioned one student back to their district home school*
- *Graduated two eighth-grade students who moved on to new schools to start their high school journey*
- *Welcomed a new school principal who took the helm in April 2023*

ACCESS 9-12

The ACCESS Program 9-12 is based upon an approach to teaching and learning that relies upon a Coordinated Services Model. Each student is assigned to a team of teachers that works specifically with and for them to build stronger foundational skills, foster independence, identify aptitudes, and prepare them for life. As students progress through the program, they are expected to become independent learners who can advocate for themselves and others. Each student follows their own targeted learning plan that they help develop based on their own unique interests, skills, and goals. Our focus is always on developing students' skills and outcomes to enable them to participate as fully as possible in their communities.

- *Increased enrollment from 11 to 18 students*
- *Celebrated two student graduations with both now employed in their communities*

Adult Training and Development Network

The Adult Training and Development Network (ATDN) is a service funded by the Connecticut State Department of Education Academic Office, to provide training opportunities and resources for Adult Education programs across the state. ATDN is home to professional and comprehensive in-person and online training for Adult Education professionals in numerous areas including Adults with Disabilities; Career Pathways; Citizenship & Integrated English Literacy and Civics Education (IELCE); Connecticut Competency System (CCS); Comprehensive Adult Student Assessment System (CASAS); English Language Proficiency (ELP) Standards; English as a Second Language (ESL); GED® Test Preparation; National External Diploma Program (NEDP); Credit Diploma Program (CDP); Teacher Evaluation; Standards-Based Professional Learning (CCRS) in English Language Arts; Technology and Digital Literacy; and Equity & Resilience.

- *Offered the 29th Annual Conference on Serving Adults with Disabilities at Water's Edge with 255 participants spanning from numerous State of CT agencies, including DMHAS, BRS, DSS, DDS, and DOL, as well as adult education agencies*
- *Worked with Digital ATDN, in collaboration with CSDE, on expanding Digital Literacy Skills and Equity & Resilience in adult education across the state including purchasing Northstar Digital Literacy licenses for adult education agencies across CT*
- *Contracted new consultants to work with ATDN in various content areas, such as CCRS ELA, Citizenship/IELCE, Adults with Disabilities, ESL, and Career Navigator*
- *Built Standards-in-Action (SIA) Curricula Review teams, in consultation with CSDE, to design an evaluation tool aligned to the SIA dimensions for adult education agencies to use in evaluating available resources*



After School Outdoor Learning Adventures

This one-year environmental education program is grant-funded by the CSDE as part of the Interdistrict Cooperative Grants program. Indian Rock Nature Center in Bristol hosts this program.

- *Conducted nature-based learning at Indian Rock Nature Preserve for 150 students from Hartford, Plymouth, and Thomaston*

Beginning Teacher Induction – Teacher Education and Mentoring (TEAM) and TEAM Review of Practice (ROP)

Work with districts to implement beginning teacher induction programs aligned with CT legislation, including TEAM and EdAdvance's newly developed TEAM ROP model. District Facilitators and TEAM Coordinating Committees receive assistance with the roles and responsibilities, support plans, and training requirements for new and current mentors as well as reviewers, both in-district and regionally. Additional support to districts includes orientations and workshops for beginning teachers and mentors to enhance practice and outcomes.

- *Provided training, support, and technical assistance to 26 districts implementing TEAM Review of Practice (ROP), EdAdvance's legislative-aligned induction program that uses the existing TEAM infrastructure and leverages already existing local processes (the district's instructional practice rubric and a universal feedback practice) to support growth within a coherent system of professional learning for improvement*
- *Developed virtual Initial Support Teacher training in collaboration with the RESC Alliance and CT State Department of Education and delivered the virtual training to over 120 mentor teachers across Connecticut*

Blue Science

This National Oceanic and Atmospheric Administration (NOAA) funded project provides 325 middle school students from Danbury with a meaningful watershed education program. Students learn about their local watershed, participate in experiential field work at Long Island Sound, and complete an end of year project. Students learn how human activity impacts watersheds and how these actions are connected to global climate change.

- *Held a mid-year teacher PD, focusing on integrating birds (form and function, habitat, and migration) into science and social studies curriculum*

Center for Program Research and Evaluation

Provides comprehensive research and evaluation services to colleges, universities, school districts, and health organizations as well as community and state agencies throughout New England. Services include: data analysis, technical assistance, professional development, proposal development, performance reporting, survey development, Google for Education Training, as well as technical assistance and planning. Evaluation services are provided in all areas of K-12 education with specialties in science, information technology, literacy and health, parent involvement, school climate, and community education. Services include: front-end evaluations, implementation evaluations, impact evaluations, design-based implementation research, outcome evaluations, and process-product evaluations.

- *Partnered with AttendanceWorks to develop focus group and data collection for projects in California*
- *Began work with data parameters of the School-Based Mental Health federal grant*
- *Worked with Plainville School District on improving student data collection processes and policies*

College and Career Accelerator

The College and Career Accelerator, created in spring of 2023, exists to provide customized postsecondary educational and career opportunities for students while still enrolled at their home high school. Collaboratively, with our school district partners, we provide programs that are aligned with the interests of students and the workforce needs of local businesses in the Northwest Region and across Connecticut. The College and Career Accelerator espouses the following values: readiness, community, and accessibility.

- *Held a ribbon cutting at EdAdvance's new Regional Learning Center (RLC), located at the former East School Torrington site, with a dedication by Paul Lavoie, Connecticut's Chief Manufacturing Officer*
- *Awarded a \$150,000 State of Connecticut Dual Enrollment Grant*
- *Developed partnerships with CT State Community College Northwestern (formerly NCCC) and Central CT State University*



EdAdvance Adult & Continuing Education

The EdAdvance Adult & Continuing Education program serves 17 school districts encompassing 25 towns. Our program provides three options for high school diploma equivalency (Adult High School Credit Diploma, National External Diploma Program and GED® preparation), Adult Basic Education, English as a Second Language and Americanization/Citizenship at no cost to adult participants. Several program enhancement projects are grant funded to support classes for workforce readiness, GED prep for adults with barriers to education, career training (Certified Nurse Aide, Food Handler, Digital Literacy), and transition to post-secondary and career. Enrichment classes are fee-based and are offered in a wide variety of subject areas such as arts & crafts, computers, finance, home improvement, languages, music & dance, personal development, and recreation & leisure.

- *Offered a GED preparation course in Spanish*
- *Completion of the state licensing exam for Certified Nurse Aide for 3 ESL students in our career development program*
- *ESL students participated in our Civics Education program in community service at Torrington FISH*
- *Graduated 21 high school students and naturalized six students as U.S. citizens*

Integrating Artificial Intelligence

EdAdvance has always been committed to the proposition that digital learning will play a critical role in helping prepare this and future generations of students for their lives beyond school. The introduction of publicly available artificial intelligence tools has the potential to be a major disrupter in both the field of education, but also more broadly, our understanding of future economic opportunity. Our staff have worked to stay on top of this rapidly changing field and are prepared to assist our district partners in how to best plan to leverage its potential to assist learners/educators and also how to protect them from those who would use these tools with bad intentions.

Mental Health Awareness Training in Western CT

This 5-year SAMHSA funded project provides Mental Health First Aid training (MHFA) and QPR (Question. Persuade. Refer.) Suicide Prevention Trainings to adults and teens throughout western CT. We trained more than 600 individuals.

- *Provided training to students and adults at CT Ambulance Association, East Haven High School, Hartford Public School's Spring Break Academy, Hotchkiss School, Marvelwood School, McCall Center for Behavioral Health, Naugatuck Valley Community College, Newtown High School, Prime Time House, Sacred Heart Academy, Salisbury School, Washington, and Watertown High School*

Partnership Learning Academy

Partnership Learning Academy (PLA), in collaboration with nearby school districts, is committed to providing K-5 students with high-quality programming through specially-designed instruction and related services in a therapeutic setting. The program provides personalized learning tailored to meet each student's unique academic, social/emotional, and behavioral needs. The goal for all PLA students is a successful return to district upon development of skills required for a less restrictive environment.

- *Returned four students to their districts*
- *Collaborated to establish the Gold Card system in which all PLA students had monthly opportunities to participate in both planned and unplanned fun events as a positive reinforcer for safe and appropriate school behavior*
- *Conducted our First Annual Talent Show and Third Annual Field Day with both students and staff participating*
- *Partnered with community agencies, including the Plymouth Fire Department, Children's Museum, and Indian Rock Nature Preserve for enhanced experiential learning opportunities for students*

Perkins/Career & Technical Education

The Carl T. Perkins grant is a federal grant that funds career and technical education courses in 12 different career pathways in Connecticut. EdAdvance leads two consortiums. Consortium One consists of five school districts (The Gilbert School, Litchfield, Oxford, and Regions 9 and 16) and Consortium Two consists of three school districts (Region 6, Region 7, and Region 12). In both consortiums, the programs provide comprehensive and rigorous content aligned with the challenging, standard-relevant technical knowledge, and skills necessary for further education and/or a career in current or emerging professions. The focus of Perkins is high wage, high skill, high opportunity career areas in Connecticut.

- *Purchased new technology for participating districts to increase student achievement and post secondary opportunities for their students including iPads, drones, and 3D printers*



Professional Learning Services

At the core of achieving every school system's mission of graduating successful young adults is a quality relationship between teachers and students. Our certified educators bring years of classroom practice and knowledge of the latest research to their roles as professional learning specialists. We offer a range of professional learning opportunities and services to assist district staff in their shared pursuit of improved student learning. From curriculum audits and revision support, integration of academic standards, preparation for appropriate assessments, acquisition of 21st century skills, and the implementation of new data-based accountability models, we have the professional resources to help districts improve their practice.

- *Engaged in a year-long effort to increase our focus on equity in education including professional learning with Kathy Taylor to talk about issues of equity in education*
- *Played a critical role in the Learner Engagement and Attendance Program (LEAP) in partnership with the CT State Department of Education by leading hours of training and webinars to grow this program, which is now nationally recognized*
- *Finished our 4th and final year of the New Britain Curriculum renewal project which has demonstrated impact on the students across several schools in the district*
- *Worked with Human Resources and Marketing to support schools in creating plans to increase educator diversity in their districts*
- *Conducted many professional learning sessions on a wide range of topics for districts within and beyond our region*

Regional Healthcare Shadowing Program

This long-running program offers high school students the opportunity to participate in healthcare shadowing opportunities designed to explore medical career choices and to learn and start to develop the skills necessary to succeed in the healthcare industry of the 21st century workplace. This program also focuses

on increasing student proficiency in language arts, mathematics, science, technology, and resource learning through its online component and after school workshops that encompass employability issues, healthcare industry related topics, as well as career speakers.

- *Placed students all year long at Nuvance Facilities*

RESC Alliance Collaborations

EdAdvance collaborates with the other five Regional Educational Service Centers (RESCs) to provide quality services that result in cost efficiencies to districts throughout the state.

*Accelerate CT
Collaboration for Effective Educator Development, Accountability, and Reform (CEEDAR)
Digital Learning Initiatives
Early Childhood Initiatives
English Language Learner Support
Equity, Inclusion and Belonging
Learner Engagement and Attendance Program
Paraprofessional Training
School Improvement Services
Smarter Balanced Assessments
Social and Emotional Learning Support Services
Special Education Services
Statewide Strategic Support Responses
Teacher and Administrator Evaluation and Support Systems
Teacher Education and Mentoring Program
Virtual High School Consortium*

- *Facilitated the Igniting Change Initiative that included sold out fall and spring conferences (over 350 people at each conference) with nationally renowned speakers Tom Guskey, Lorena German, Baruti Kafele, and Richard Milner*

Skills21 at EdAdvance

Skills21 is a nationally known leader in digital learning and recognized by the US Department of Education as an exemplary model for delivering STEM achievement. Skills21 delivers a flexible, affordable, and road-tested model for driving student success.

Using a variety of learning technologies, Skills21 programs help increase rigor and relevance at school. Over a decade of research has demonstrated that Skills21 programs increase academic achievement, lead to improved 21st century skills, impact students' interest in STEM, and help students collaborate with peers from different backgrounds.

ARX21: Augmented Reality Experience in 21st Century STEM Careers (ARX)

This four-year grant, funded by the National Science Foundation, was awarded in December 2019. This grant engages students in project-based learning that fully integrates STEM and Augmented Reality (AR) concepts and practices. Students learn content using AR and also create their own AR enhanced solution to real world problems.

Capstone

In the Skills21 Capstone Program, students demonstrate key college and career ready skills through an individual passion project. Skills21 works with school districts to design a Capstone program that aligns with the school's portrait

of a graduate and can be used to fulfill state level mastery-based graduation requirements. Over 2,000 students from 13 school districts participated in the 2022-2023 Capstone program in a range of settings.

Journey of You - Creating a Toolkit of SEL Skills

In the Skills21 Journey of You (JOY), students embark on an experience that builds resilience. Through each activity, students explore new practices that will instill positivity, healthy habits, and Social Emotional Learning (SEL) strength building.

Personal Interest Projects for Remote Learning (PIP)

The Skills21 Personal Interest Project (PIP) provides an opportunity for students to follow their passions and complete a project where they can “learn, solve, make, or do” while mastering high leverage skills necessary for school and beyond. Over 1,500 students from 13 school districts participated in the 2022-2023 PIP program in a range of settings.

- *Expanded JOY to 9th grade including Freshman Foundations in Stamford, CT*
- *Integrated the ChatGPT API into the Launchpad platform for PIP and Capstone*
- *Launched a webinar and presentation series on Generative AI*

Social, Emotional, and Mental Health Services

EdAdvance has expanded our social, emotional, and mental health school-based services to assist district and school leaders in creating conditions for a strong and positive school climate and culture. To assist in this effort, the agency was awarded a United States Department of Education grant to increase school based mental health services in 32 rural schools in the northwest corner of the state. EdAdvance will now offer professional development and customized school services relevant to the social, emotional, and mental well-being of students. EdAdvance will work to support districts' increasing emphasis on school culture and climate by offering flexible and adaptive professional



learning opportunities in the areas of school climate, digital health, student behaviors, personal safety, trauma, and district/school leader SEL training. Our goal is to support districts in creating their vision for an improved school climate and help build the capacity to sustain it over time.

- *Received an \$8.7 million grant from the U.S. Department of Education to increase school-based mental health services in 32 rural K-12 schools in northwestern CT*
- *Recruited and hired 16 diverse credentialed school social workers and/or school counselors and placed one 50% FTE School-Based Mental Health professional in every participating school through December 2027*

Special Services

The Special Services department has three major functions: 1) to support our internal EdAdvance programs, 2) to collaborate with districts within our region to provide professional staff, customized programming and services, and comprehensive trainings, and 3) to work with the Connecticut State Department of Education (CSDE) and the Bureau of Special Education (BSE) to provide support and rollout of initiatives around the region and state.

- *Continued to work in collaboration with the CSDE/ BSE and the State Education Resource Center (SERC) on multiple projects throughout the region and the state (i.e. CT-SEDS rollout, IEP Quality Training, Transition, Charting the LifeCourse, Customized Employment and many others)*
- *Hosted northern and southern Superintendent and Directors of Special Education meetings to recognize and thank the group for their commitment to the field and discuss regional efficiencies*
- *Provided co-teaching professional development and consultation to North Haven and Thomaston Public Schools*
- *Provided customized CT-SEDS professional development and consultation to Thomaston and Waterford Public Schools*
- *Implemented a comprehensive and consistent*

student intake process that is aligned across the four internal programs.

Steps Expelled Student Program

The Steps Expelled Student Program is a program serving general education and special education students that have been expelled from their district school. Students enrolled in this program participate in their education through online coursework supported by a certified special education and two paraprofessionals, engage in weekly counseling sessions with school counselors, and participate in a program-wide behavior system designed to facilitate work completion.

- *Continued working closely with Torrington, New Milford, and Winchester*
- *Educated twenty-three students*

Steps Program

The Steps Program is a specialized educational day program serving special education students with behavioral challenges in grades 6-12. The program is designed to replicate a typical high school experience while maintaining small class sizes and high staff to student ratio. Steps students receive team-based behavioral and academic instruction from certified special education and content area teachers, school social workers, and registered behavior technicians. All students enrolled in the program also participate in weekly individual counseling sessions, work towards successfully completing their postsecondary and transitional goals/objectives with our school counselor and transition coordinator, and participate in a school-wide tiered behavioral support system that is monitored by Steps' on-site Board Certified Behavior Analyst. Steps students may also choose to utilize the supports at Steps to earn gainful employment and their driver's license.

- *Graduated four students from Torrington and Watertown*
- *Continued working closely with Torrington, New Milford, and Winchester*

University Pathways Program

The University Pathways Program, in collaboration with Post University, is an 11-month program that provides comprehensive transition services for learners of all exceptionalities, aged 17-22. There are two pathways: the University Students Pathway and the Emerging Students Pathway. The University Students Pathway is for learners who have the cognitive capacity to complete university level work. This pathway provides support in executive functioning, vocational training, social and/or independent living. Students in this pathway can earn college credits upon completion of the program. The Emerging Students Pathway is for learners who require more support and may have future goals in college or in their own community. This pathway provides support in functional academics, executive function, independent living, social skills, and vocational training in a university setting.

- *Attending districts this year included Bethel, Brookfield, Cheshire, Danbury, Naugatuck, Oxford, Plymouth, Region 5, Region 14, Region 15, Region 16, Ridgefield, Shelton, Tolland, Waterbury, and Watertown with thirty students participating*
- *Enrolled twenty-four students in at least one credit bearing course*
- *Hosted a booth by emerging students at Post's Limitless Possibilities Day*

- *Exited 3 students who will matriculate at other college programs and 6 students who will matriculate at Post University*

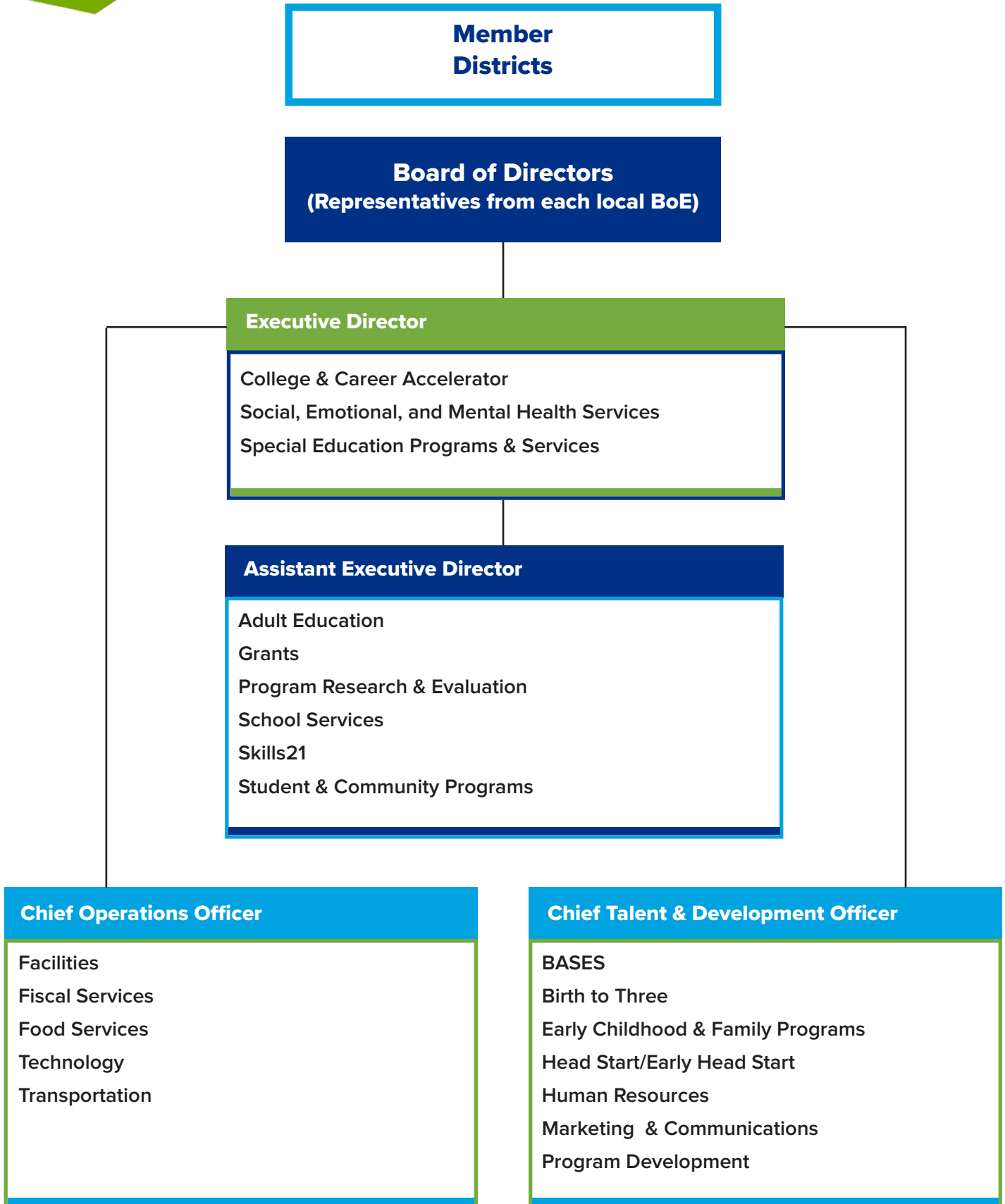
WorkspaceCT

Cooperative Educational Services (CES) and EdAdvance work together, in partnership with our representative school districts and municipalities, to build a vibrant community of learning dedicated to preparing all students for success beyond school. Through our collaborative use of the WorkspaceCT facility, we strive to provide learners of all ages personal and professional educational experiences that support growth, value creativity, and inspire innovation, self-direction, and meaningful engagement.

- *Worked closely with CSDE to expand Computer Science initiatives across the state*
- *Awarded a School Security Grant*
- *Collaborated with 5 districts to expand the CTE offerings and facilitated PD for teachers*
- *Facilitated 2 Go-Baby-Go events in Bethel and Shepaug*
- *Worked with the CSDE to rewrite the Tech Ed teaching standards*

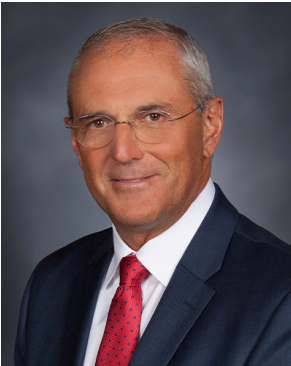


Organizational Structure



Leadership Team

Executive Team



Jeffrey Kitching, Ed.D.
Executive Director



Jonathan P. Costa, Sr.
Assistant Executive
Director



Richard Carmelich, III
Chief Operations Officer



Tracey Lay
Chief Talent &
Development Officer

Program Directors



Michelle Anderson
Director of Early Childhood &
Family Programs



Dan Cocchiola
Director Career Pathways and
Workforce Readiness



Alisha DiCorpo
Special Projects Manager



Devonna Dionne
Director of Marketing &
Communications



Susan Domanico
Director of Adult Education



Jennifer Douglas
Special Projects Manager



Bruni Edwards
Director of Birth to Three



Amy Ferrari
ATDN Coordinator



Brett Fiore
Principal of Steps



Rose Forzano
Director of Human Resources

Program Directors



Carmella Galipault
Director of Head Start & Early Head Start



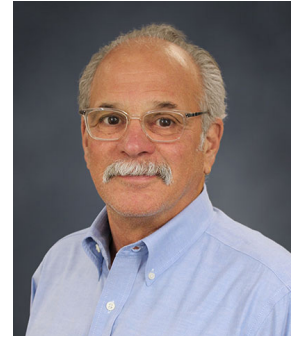
Kevin Glass
Director of Center for Program Research & Evaluation



Jaren Havell
Director of Technology



Kara Kirkegard
UPP Coordinator



Mike LoRusso
Director of Transportation



Jennifer McCormick
Director of Behavioral Services
Principal of ACCESS, K-8



Matt Mervis
Director of Skills21 at EdAdvance



Laura Miller
Principal of ACCESS, 9-12



Jody Minotti
Director of Regional and Transition Services



Annette Miserez-Dillon
Director of Special Education Programs & Services



Sarah Moran
Department Director of BASES



Tim Noel
Director of Facilities



Judith Palmer
Director of Social, Emotional, & Mental Health Services



Abby Peklo
Director of Grants & Special Programs



Elizabeth Radday
Director of Professional Learning



Rich Reynolds
Director WorkspaceCT



Scott Rossignol
Principal of PLA



Mia Toimil
Director of Finance



Becky Tyrrell
Director of Food Services

Governing Board

PRESIDENT

John Kissko

VICE-PRESIDENT

Kate Conetta
Lynn Stone*

SECRETARY

Deborah Bell

TREASURER

Joseph Abdella
Kate Conetta*

MEMBER AT LARGE

Sarah Robichaud

BARKHAMSTED
Mary Kate Terzini

LITCHFIELD
Lynn Stone

PLYMOUTH
Karen Kulesa

REGION 12
Joseph Abdella

COLEBROOK
Sarah Robichaud

NEW FAIRFIELD
Dominic Cipollone

REGION 6
Dave Schneiderbeck

THOMASTON
Roxy Fainer

DANBURY
Kate Conetta

NEWTOWN
Alison Plante

REGION 7
Deborah Bell

TORRINGTON
John Kissko

**served partial term*

EdAdvance Member Districts



Barkhamsted
Bethel
Brookfield
Canaan
Colebrook
Cornwall
Danbury
Kent

REGION 1

Canaan
Cornwall
Kent
North Canaan
Salisbury
Sharon

REGION 6

Goshen
Morris
Warren

Litchfield
New Fairfield
New Hartford
New Milford
Newtown
Norfolk
North Canaan
Plymouth

REGION 7

Barkhamsted
Colebrook
New Hartford
Norfolk

REGION 12

Bridgewater
Roxbury
Washington

Salisbury
Sharon
Sherman
The Gilbert School
Thomaston
Torrington
Watertown
Winchester

REGION 14

Bethlehem
Woodbury

REGION 15

Middlebury
Southbury

Collaborations

EdAdvance wishes to thank the following for their active role in helping our agency meet its goals for 2022-2023.

- CT General Assembly
- 30 school districts in western Connecticut

The Other Connecticut Regional Educational Service Centers (RESCs)

- ACES (Area Cooperative Educational Services)
- CES (Cooperative Educational Services)
- CREC (Capitol Region Education Council)
- EASTCONN
- LEARN

State Agencies

- Bureau of Rehabilitation Services
- Bureau of Special Education
- CT Commission on Children
- CT Community Colleges' COT Regional Center for Next Generation Manufacturing
- CT Dept of Energy and Environmental Protection
- CT Early Childhood Education Cabinet
- CT Head Start Collaboration Office
- CT Office for Workforce Competitiveness (OWC)
- CT Office of Early Childhood
- CT Office of Policy Management
- CT State Department of Children & Families
- CT State Department of Developmental Services
- CT State Department of Education
- CT State Department of Emergency Services and Public Protection
- CT State Department of Labor
- CT State Department of Public Health
- CT State Department of Mental Health & Addiction
- CT State Department of Social Services
- CT Women's Education and Legal Fund
- NW Regional Workforce Investment Board
- State Education Resource Center (SERC)

Local Agencies/Collaborations

- All Our Kin
- Beardsley & Memorial Library–Winsted
- Brooker Memorial–Torrington
- Center Congregational Church–Torrington
- CT Family Support Network
- CT Infoline
- CT State Naugatuck Valley
- CT State Northwest
- CT State Tunxis
- Connecticut Junior Republic (CJR)
- Cradle to Classroom
- Danbury Chamber of Commerce
- Danbury Children First
- Danbury Department of Housing
- Danbury Family Focus Partnership
- End Hunger Connecticut, Inc.
- ESL Reception Center–Danbury Public Schools
- Families Network of Western CT
- Family and Children's Aid–Danbury
- Family Focused Partnership–Danbury
- Family Strides–Torrington
- Forman School
- Greater Danbury Mental Health Authority
- Housatonic Youth Services Bureau
- Kid Care Advisory Council
- LARC of Torrington
- Litchfield County Autism Spectrum Association
- Litchfield County Directors of Special Education Assoc.
- Litchfield County Superintendents Association (LCSA)
- Literacy Volunteers of America of NW CT
- Local Interagency Coordinating Council (LIICC)
- Main Street Community Foundation
- McCall Center for Behavioral Health
- Mid-Western CT Council on Alcoholism (M.C.C.A.)
- New Opportunities–Waterbury
- Northwest Hills Council of Governments
- Northwest YMCA
- NW Child and Family Health Council

- NW Collaborative for Young Children & Families
- NW Community Collaborative
- NW Continuum of Care
- NW CT After School Network
- NW CT Chamber of Commerce
- NW Mental Health Board
- Oliver Wolcott Library–Litchfield
- Pediatric Associates
- Plymouth CT Police Department
- Positive Expression
- Post University
- RecycleCT
- Seifort & Ford Community Health Center
- Southern CT State University
- Susan B. Anthony Project–Torrington
- Torrington Area Health District
- Torrington Child Care Center
- Torrington Early Childhood Collaborative (TECC)
- Torrington Library
- Torrington Police Activities League (PAL)
- Trinity Glen
- UConn Academy for Natural Resources
- UConn Adoption Assistance Program
- UConn Medical Center
- UConn NEAG School of Education
- United Way of NW Connecticut
- United Way of Western Connecticut
- United Way of West Central Connecticut
- University of Hartford
- University of St. Joseph–Hartford
- Waterbury Youth Services
- Wellmore EMPS
- Western CT Area Agency on Aging
- Western CT Mental Health Network
- Western Connecticut State University
- Western CT Superintendents Association (WCSA)
- Winsted Area Child Care Center
- Yale University

Local Businesses

- Battelle Technology Partnership Practice
- BNB Manufacturing–Winsted
- Boehringer Ingelheim–Ridgefield
- Carlson Therapy Network–Brookfield
- Charlotte Hungerford Hospital–Torrington
- Childcare Associates–Danbury
- CISCO
- City Center Danbury
- Community Health Center–Danbury
- Connecticut Center for Advanced Technology, Inc.
- Connecticut Children's Medical Center
- Connecticut Family Orthopedics
- Connecticut Public Television (CPTV)
- Connecticut United for Research Excellence, Inc.
- Connecticut Women's Education & Legal Fund
- Danbury Hospital
- Dental Associates–New Milford
- Environmental Learning Centers of Connecticut
- Fairfield County Bank
- Family Medical Center–Ridgefield
- Geer Village–Canaan
- Global Compliance Network (GCN)
- Hartford Hospital
- Howmet Castings–Winsted
- IBM–Southbury
- IEP Direct
- Indian Rock Nature Center
- Main Street Rehabilitation Center–Danbury
- New Milford Hospital
- News Times
- Newtown Pediatrics
- Northeast Generation Co.
- Northwest Community Bank
- Prometric
- Savings Bank of Danbury
- Scholastic
- Tanglewood Research
- Thomaston Savings Bank
- Torrington Health and Rehabilitation Center
- Volunteer Center–Danbury
- Waterbury Hospital

- Wheeler Clinic
- Workers' Compensation Trust

Foundations

- American Savings Foundation
- Berkshire Taconic Community Foundation
- CBIA Education Foundation & the Academy of Engineering and Green Technology
- Children's Trust Fund
- Connecticut Community Foundation
- Connecticut Health Foundation
- Ellen Knowles Harcourt Foundation–New Milford
- Fairfield County's Community Foundation
- Kellogg Foundation
- Northwest Connecticut Community Foundation
- Thomaston Savings Bank Foundation
- Union Savings Bank Foundation

State & National Professional Assoc./Organizations

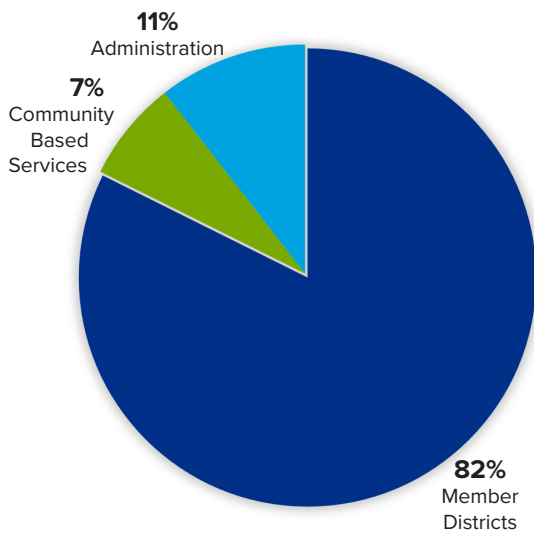
- American Assoc. of Adult & Continuing Education
- American Association of School Administrators
- American Evaluation Association
- Association of Educational Service Agencies
- Assoc. of Supervision and Curriculum Development
- Child Day Care Council
- Child Health and Development Institute of CT
- Comprehensive Adult Student Assessment Systems
- CT Academy for Educ. in Math, Science, and Tech.
- CT Academy of Educational Leaders
- CT After School Network
- CT Association for Education of Young Children
- CT Association for Human Services
- CT Association for Infant Mental Health
- CT Association of Adult & Continuing Education
- CT Association of Boards of Education (CABE)
- CT Association of Community Providers
- CT Association of Curriculum Development
- CT Association of Independent Schools
- CT Association of Public School Superintendents (CAPSS)
- CT Association of School Business Officials (CASBO)
- CT Association of Special Education
- CT Center for School Change
- CT Charts-a-Course
- CT Community Providers
- CT Distance Learning Association
- CT Early Childhood Alliance
- CT Educators Computer Association
- CT Family Resource Alliance
- CT Head Start Association
- CT HOSA
- CT Outdoor & Environmental Education Association
- CT Reading Association (CRA)
- CT School Readiness Network
- CT Science Fair Association
- CT Technology Council
- CT Voices for Children
- Council for Exceptional Children
- Eastern Evaluation Research Society
- Healthy Child Care CT
- Literacy Volunteers of America
- Love146 Human Trafficking Prevention
- National After School Association (NAA)
- National Association for Education of Homeless Children and Youth (NAEHCY)
- National Assoc. for the Education of Young Children
- National Association of Social Workers
- National Head Start Association
- National Oceanic and Atmospheric Administration (NOAA)
- National Police Athletic League (NPAL)
- National Science Foundation (NSF)
- New England Head Start Association
- North American Association for Environmental Education
- NW CT Human Resource Association
- Substance Abuse and Mental Health Services Administration (SAMHSA)
- The Alliance for Non-Profit Growth & Opportunity (TANGO)
- U.S. Department of Education
- U.S. Environmental Protection Agency
- U.S. League of States for Infant Mental Health
- Youth Development Training Resource Center

Financials

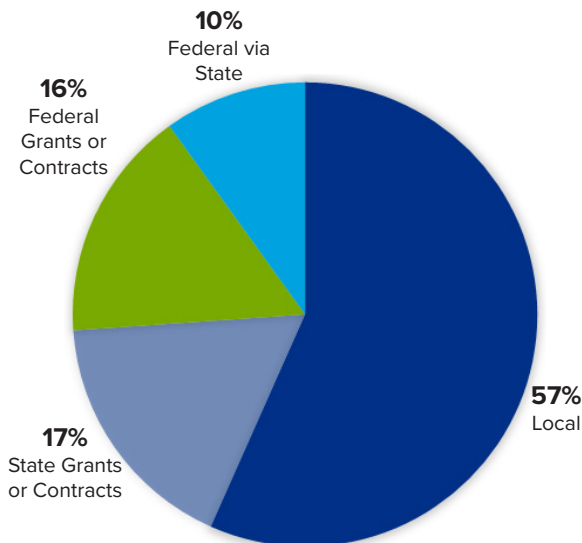
2022-23 Budget Summary

Local	\$ 26,685,941
State Grants	8,297,648
Federal Grants	7,809,229
Federal via State	4,404,830
Total	\$ 47,197,648

Funding Allocations



Funding Sources



Based on estimated financial statements

FEDERAL GRANTS OR CONTRACTS

PROGRAMS	AMOUNT	% OF BUDGET
PPP Loan Debt Forgiveness	\$ 3,513,740	
Head Start	2,725,721	
National Science Foundation	536,334	
ARPA Funding	464,222	
School Based Mental Health	295,259	
Mental Health Awareness Training NW CT	133,787	
National Oceanic Atmospheric Administration	86,938	
United Department of Justice	33,023	
REAP	20,205	
Total	\$ 7,809,229	16%

STATE GRANTS OR CONTRACTS

PROGRAMS	AMOUNT	% OF BUDGET
Early Childhood/Birth to Three/SEED	\$ 4,601,686	
Adult Education	1,432,279	
DDS, DSS and DMHAS	856,669	
Before & After School Extended Programs	837,195	
Head Start	330,680	
Community Programs	100,000	
ARPA Funding	84,139	
Medical Apprenticeship Program	55,000	
Total	\$ 8,297,648	17%

FEDERAL VIA STATE GRANTS

PROGRAMS	AMOUNT	% OF BUDGET
Early Childhood/Birth to Three/SEED	\$ 2,587,866	
Child Nutrition Program	1,094,344	
Before & After School Extended Programs	131,760	
Adult Education - Comprehensive Program	110,000	
Food Service Summer Program	107,076	
Perkins	102,968	
Adult Education - Civics	93,693	
Homeless Education Program	75,236	
ARPA Funding	68,347	
Title II and Title III	33,541	
Total	\$ 4,404,830	10%

LOCAL

PROGRAMS	AMOUNT	% OF BUDGET
Tuitions	\$ 8,618,909	
Administration	4,969,328	
Transportation	4,313,170	
Special Education Professional Services	2,835,591	
School Services	2,285,671	
Food Services	1,531,461	
Before & After School Extended Programs	1,304,223	
Personnel Services	490,379	
Adult Education	185,586	
Head Start Local Programs	82,588	
Transition Services	42,585	
Dues	19,900	
Donations	6,550	
Total	\$26,685,941	57%

GRAND TOTAL	\$47,197,648	100%
--------------------	---------------------	-------------

2022-2023 User Services Matrix

PROGRAMS & SERVICES	Barkhamsted	Bethel	Brookfield	Canaan	Colebrook	Cornwall	Danbury	Kent	Litchfield	New Fairfield	New Milford	Newtown	Norfolk	North Canaan	Plymouth	Region 1	Region 6	Region 7	Region 12	Region 14	Region 15	Salisbury	Sharon	Sherman	The Gilbert School	Thomaston	Torrington	Watertown	Winchester	Other
Adult & Continuing Education	●			●	●	●	●	●	●	●	●	●	●		●	●	●	●	●	●	●	●	●	●		●	●	●	●	●
BASES	●	●			●		●		●	●	●	●			●					●	●					●	●	●	●	●
Birth to Three	●	●	●	●	●	●	●	●	●	●	●	●	●		●		●	●	●	●	●	●	●	●		●	●	●	●	●
Community Adult Services			●				●		●		●						●		●	●	●						●	●	●	●
Early Childhood and Family Programs	●		●	●	●		●		●	●	●	●	●	●	●	●	●	●	●	●	●	●	●	●	●	●	●	●	●	●
Early Childhood Training/ Consultation	●	●	●	●		●	●		●		●	●		●	●		●		●		●	●		●	●		●	●		●
FRCs/School Readiness		●	●				●	●		●	●	●			●		●	●		●	●			●		●	●	●		●
Fingerprinting Services	●				●	●	●	●	●				●		●	●		●		●	●		●	●	●	●	●		●	●
Food Services	●								●				●				●	●	●	●							●		●	
Head Start/ Early Head Start	●				●				●		●				●		●			●						●	●	●	●	
Human Resources			●								●					●										●				
Information Technology					●	●							●	●					●						●					●
Personnel Services		●	●				●			●	●															●				
Professional Councils	●	●	●		●		●	●	●	●	●	●	●	●	●	●	●		●	●	●	●		●		●	●	●	●	●
School Services/PD	●	●	●		●					●	●	●	●	●			●		●	●	●		●	●		●	●	●	●	●
Skills21									●	●		●				●				●	●						●			
Special Education Programs		●	●				●		●	●	●	●			●		●	●		●	●				●		●	●	●	●
Student Programs		●					●	●	●	●	●	●		●	●		●	●	●	●	●	●			●	●	●	●		●
TEAM Assessment/ Support	●	●	●	●		●	●	●	●		●	●		●	●	●	●		●	●	●			●	●	●	●	●		●
Transportation	●	●	●				●		●	●	●	●				●	●	●	●	●	●					●	●	●	●	●



Litchfield Office

355 Goshen Road
P.O. Box 909
Litchfield, CT 06759-0909
Phone: 860.567.0863



WorkspaceCT

16 Trowbridge Drive
Bethel, CT 06801
Phone: 855.937.2747



ACCESS K-8

The Dr. Danuta M. Thibodeau
Education Center
103 Miry Brook Road
Danbury, CT 06810
Phone: 203.205.0000



ACCESS 9-12

WorkspaceCT
16 Trowbridge Drive
Bethel, CT 06801
Phone: 855.937.2747



**EdAdvance Early
Childhood Center**

(Future Home)
95-104 Grove Street
Torrington, CT 06790
Phone: 860.567.0863



Head Start

28 St. John Place
Torrington, CT 06790
Phone: 860.482.5286



**Partnership Learning
Academy**

77 Main Street
Terryville, CT 06786
Phone: 860.516.7005



**Regional Learning
Center**

**Steps Middle & High
School**

215 Hogan Drive
Torrington, CT 06790
Phone: 860.618.7411