

SERIES 7500

Ball-valves

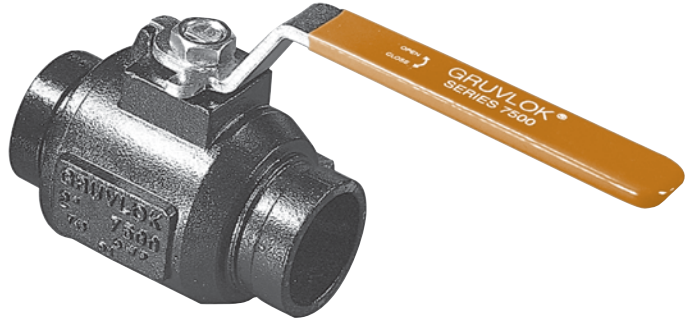
The Series 7500 grooved-end ball valve line consists of a 2" to 6", two piece design, and is available in configurations to address a broad spectrum of application requirements.

The Series 7500 has generous factors of safety for pressure retention and stem torsional strength. In addition, it has a blow-out proof stem design, low operating torque, and high Cv.

The Series 7500 is compliant with NACE MR01-75 when stainless steel trim is specified.

Grooved ends conform to the requirements of AWWA C606 for steel pipe.

For special configurations, contact your Anvil representative.



For stainless steel, see the stainless steel section.

PRESSURE-RATING:

800 psig CWP (55 bar) in ASTM A 395 Ductile Iron

MATERIAL SPECIFICATIONS

DUCTILE IRON/STAINLESS STEEL

BODY: Ductile Iron ASTM A 395

ENDPLATE: Ductile Iron ASTM A 395

BALL: Stainless Steel 316 or 304

STEM: 316 Stainless Steel

THRUST WASHER: RTFE

STEM SEAL: Flouroelastomer

RETAINING RING: Carbon Steel

HANDLE: Carbon Steel Zinc Plated

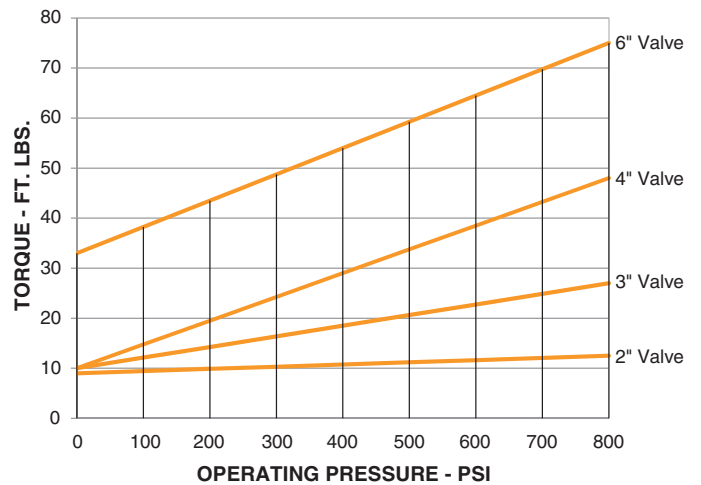
HANDLE NUT: 300 Series Stainless Steel

SEAT: RTFE

BODY SEAL: Viton

LOCK PLATE: 300 Series Stainless Steel

NOMINAL OPERATING TORQUE



The nominal torque values are for water and lubricating service only. For dry gasses an additional multiplier of 2 should be applied to the nominal values. Additional torque of up to 3 times the nominal value may be required to break the ball loose if the valve is not frequently operated.

SERIES 7500 BALL VALVES (ORDERING INFORMATION)

Sample Part Number	4"	G	I -	75	4	2 -	2
4" GI-7512-2 →	Size	Configuration	Body/End Material	Series	Ball and Stem Material	Seat Material	Operator
	2" - 6"	G - 2 Way Grooved End	I - Ductile Iron ASTM A395	75 - 7500	4 - 304 Stainless Steel (2" - 4") 6 - 316 Stainless Steel	2 - RTFE / Flouroelastomer	2 - 2 Position Locking Handle 3 - Bare Stem (6" only) M - Mining Handle (4" & 6" only)

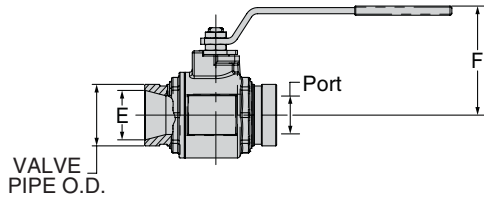
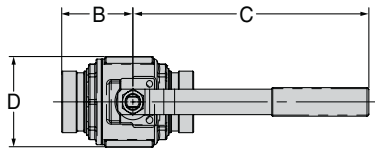
PROJECT INFORMATION

APPROVAL STAMP

Project:	<input type="checkbox"/> Approved
Address:	<input type="checkbox"/> Approved as noted
Contractor:	<input type="checkbox"/> Not approved
Engineer:	Remarks:
Submittal Date:	
Notes 1:	
Notes 2:	

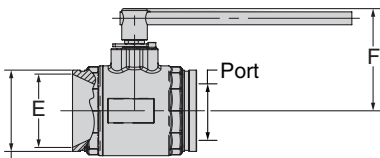
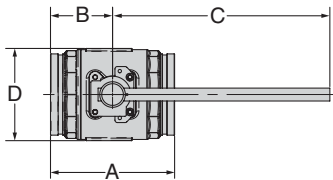
SERIES 7500

Ball-valves



7500 BALL VALVE										
Size ANSI	O.D.	Dimensions							Cv	Approx. Wt. Ea.
		A	B	C	D	E	F	Port		
In./DN(mm)	In./mm	In./mm	In./mm	In./mm	In./mm	In./mm	In./mm	In./mm		Lbs./Kg
2	2.375	5½	2 ³¹ / ₃₂	9 ⁵⁵ / ₆₄	3½	1 ⁵⁹ / ₆₄	4 ¹⁵ / ₆₄	1½	170	7.5
50	60.3	140	75	250	89	49	107	38		3.4
3	3.500	6 ⁹ / ₁₆	3 ³⁷ / ₆₄	12 ⁵ / ₈	5 ⁵ / ₆₄	2 ⁵⁷ / ₆₄	5 ³¹ / ₆₄	2½	425	18.0
80	88.9	167	91	321	129	74	139	64		8.2
4	4.500	8¼	4 ¹¹ / ₆₄	15 ¹ / ₆₄	5 ²⁹ / ₃₂	3¾	5 ¹⁵ / ₁₆	3	600	34.0
100	114.3	210	106	382	150	95	151	76		15.5
6*	6.625	10 ⁷ / ₆₄	5 ¹ / ₁₆	15 ¹ / ₆₄	7 ³³ / ₆₄	5 ⁶³ / ₆₄	7 ¹³ / ₃₂	4	850	67.0
150	168.3	257	129	382	191	152	188	102		30.5

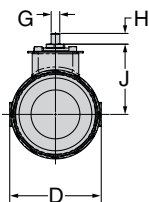
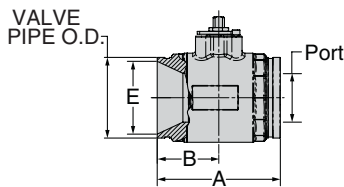
* 6" sizes come bare stem only. 2 position locking handle sold separately.



VALVE PIPE O.D.

7500 BALL VALVE WITH MINING HANDLE										
Size ANSI	O.D.	Dimensions							Cv	Approx. Wt. Ea.
		A	B	C	D	E	F	Port		
In./DN(mm)	In./mm	In./mm	In./mm	In./mm	In./mm	In./mm	In./mm	In./mm		Lbs./Kg
4*	4.500	8¼	4 ¹¹ / ₆₄	17 ²³ / ₃₂	5 ²⁹ / ₃₂	3¾	6 ⁵⁵ / ₆₄	3	600	35.0
100	114.3	210	106	450	150	95	174	76		15.9
6*	6.625	10 ⁷ / ₆₄	5 ¹ / ₁₆	17 ²³ / ₃₂	7 ³³ / ₆₄	5 ⁶³ / ₆₄	8 ²¹ / ₆₄	4	850	68.0
150	168.3	257	129	450	191	152	212	102		30.9

* Mining handle sold separately.



7500 BALL VALVE WITH BARE STEM											
Size ANSI	O.D.	Dimensions							Cv	Approx. Wt. Ea.	
		A	B	D	E	G	H	I			Port
In./DN(mm)	In./mm	In./mm	In./mm	In./mm	In./mm	In./mm	In./mm	In./mm	In./mm	Lbs./Kg	
6	6.625	10 ⁷ / ₆₄	5 ¹ / ₁₆	7 ³³ / ₆₄	5 ⁶³ / ₆₄	4 ⁵ / ₆₄	7/8	5 ⁴⁹ / ₆₄	4	850	66.0
150	168.3	257	129	191	152	18	23	147	102		30.0

Standard option, handle sold separately.