

FIG. 7047, FIG. 7048 & FIG. 7049 Clamp-T, Cross



Fig. 7047



Fig. 7048

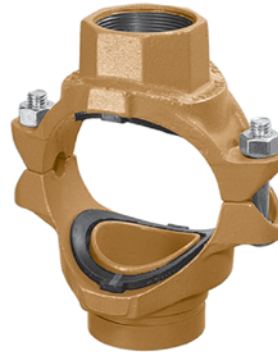


Fig. 7049

The Gruvlok Clamp-T provides a branch or cross connection in light wall or standard wall steel pipe.

The Fig. 7045 Clamp-T female pipe thread branch is available with NPT or ISO 7/1 connection and the Fig. 7046 Clamp-T has grooved-end branch connection.

Clamp-T cross connections are available allowing greater versatility in piping design.

NOTE: 2 1/2" x 1 1/4" Figure 7046 cannot be used in cross configuration.

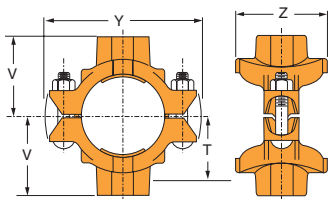


Fig. 7047 - Thread x Thread

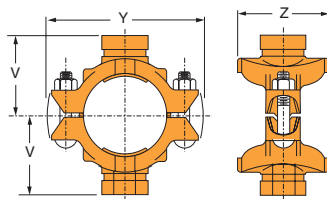


Fig. 7048 - Groove x Groove

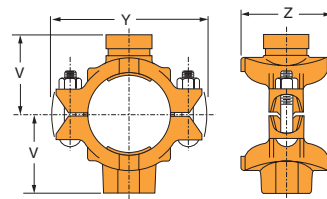


Fig. 7049 - Groove x Thread



For Listings/Approval Details and Limitations, visit our website at www.anvilint.com or contact an Anvil® Sales Representative.

MATERIAL SPECIFICATIONS

BOLTS:

SAE J429, Grade 5, Zinc Electroplated
ISO 898-1, Class 8.8, Zinc Electroplated followed by a Yellow Chromate Dip

HEAVY HEX NUTS:

ASTM A563, Grade A, Zinc Electroplated
ISO 898-2, Class 8.8, Zinc Electroplated followed by a Yellow Chromate Dip

HOUSING:

Ductile Iron conforming to ASTM A 536, Grade 65-45-12 or Malleable Iron conforming to ASTM A 47, Grade 32510.

COATINGS:

- Rust inhibiting paint – Color: ORANGE (standard)
 - Hot Dipped Zinc Galvanized (optional)
 - Other Colors Available (IE: RAL3000 and RAL9000)
- For other Coating requirements contact an Anvil Representative for more information.

GASKETS: Materials

Properties as designated in accordance with ASTM D 2000

- Grade “E” EPDM (Green color code)**
-40°F to 230°F (Service Temperature Range)(-40°C to 110°C)
Recommended for water service, diluted acids, alkalis solutions, oil-free air and many other chemical services.
NOT FOR USE IN PETROLEUM APPLICATIONS.
- Grade “T” Nitrile (Orange color code)**
-20°F to 180°F (Service Temperature Range)(-29°C to 82°C)
Recommended for petroleum applications. air with oil vapors and vegetable and mineral oils.
NOT FOR USE IN HOT WATER OR HOT AIR.

LUBRICATION:

- Standard Gruvlok
- Gruvlok Xtreme™ (Do Not use with Grade “L”)

Not for use in copper systems.

PROJECT INFORMATION		APPROVAL STAMP	
Project:		<input type="checkbox"/> Approved	
Address:		<input type="checkbox"/> Approved as noted	
Contractor:		<input type="checkbox"/> Not approved	
Engineer:		Remarks:	
Submittal Date:			
Notes 1:			
Notes 2:			