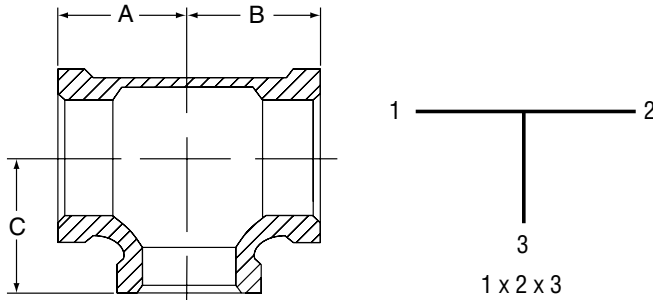


Class 300 (XS/XH)

FIG. 3164R

Reducing Tee



For Listings/Approval Details and Limitations, visit our website at www.anvilint.com or contact an Anvil® Sales Representative.

FIGURE 3164R - REDUCING TEE

Nominal Size			Dimensions			Approx. Wt. Each
1	2	3	A	B	C	
In. (mm)			In. (mm)	In. (mm)	In. (mm)	Lbs. (kg)
3/4 20	3/4 20	1/2 15	1.31 33.27	1.31 33.27	1.38 35.05	0.90 0.41
		3/4 20	1.44 36.58	1.44 36.58	1.50 38.10	1.30 0.59
1 25	1 25	1/2 15	1.50 38.10	1.50 38.10	1.69 42.93	1.70 0.77
		3/4 20	1.63 41.40	1.63 41.40	1.75 44.45	1.90 0.86
1 1/4 32	1 1/4 32	1 25	1.75 44.45	1.75 44.45	1.81 45.97	2.10 0.95
		1 1/4 32	2.00 50.80	2.00 50.80	2.06 52.32	3.00 1.36
1 1/2 40	1 1/2 40	1 1/4 32	2.13 54.10	2.13 54.10	2.31 58.67	4.20 1.91
		1 1/2 40	2.25 57.15	2.25 57.15	2.38 60.45	4.60 2.09
2 50	2 50	2 50	2.69 68.33	2.69 68.33	2.75 69.85	7.60 3.45
		3 80	2.81 71.37	2.81 71.37	3.13 79.50	9.60 4.35

MATERIAL SPECIFICATIONS

- Dimensions: Fittings: ASME B16.3
Unions: ASME B16.39
Bushings/Plugs: ASME B16.14
- Material: ASTM A-197
- Finish: Black or Hot Dip Galvanized per ASTM A153 Class A
- Threads: NPT per ASME B1.20.1
- Pressure Ratings: Fittings: ASME B16.3
Unions: ASME B16.39
Bushings/Plugs: ASME B16.14
- Pressure Testing: All malleable iron fittings are tested for through wall porosity using an air under water process.
- Agency Approvals: All malleable iron fittings and unions are UL/ULC Listed and FM Approved.

PROJECT INFORMATION

APPROVAL STAMP

Project:	<input type="checkbox"/> Approved
Address:	<input type="checkbox"/> Approved as noted
Contractor:	<input type="checkbox"/> Not approved
Engineer:	Remarks:
Submittal Date:	
Notes 1:	
Notes 2:	