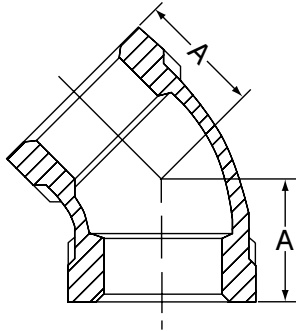


Class 300 (XS/XH)

FIG. 3162

45° Elbow



For Listings/Approval Details and Limitations, visit our website at www.anvilintl.com or contact an Anvil® Sales Representative.

FIGURE 3162 - 45° ELBOW

Nominal Size	Dimension A	Approx. Wt. Each
<i>In. (mm)</i>	<i>In. (mm)</i>	<i>Lbs. (kg)</i>
1/4	0.81	0.19
8	20.57	0.09
3/8	0.88	0.28
10	22.35	0.13
1/2	1.00	0.43
15	25.40	0.20
3/4	1.13	0.66
20	28.70	0.30
1	1.31	1.00
25	33.27	0.45
1 1/4	1.50	1.70
32	38.10	0.77
1 1/2	1.69	2.10
40	42.93	0.95
2	2.00	3.40
50	50.80	1.54
2 1/2	2.25	5.50
65	57.15	2.49
3	2.50	8.10
80	63.50	3.67
4	2.81	13.00
100	71.37	5.90

MATERIAL SPECIFICATIONS

Dimensions: Fittings: ASME B16.3
 Unions: ASME B16.39
 Bushings/Plugs: ASME B16.14

Material: ASTM A-197

Finish: Black or Hot Dip Galvanized per ASTM A153 Class A

Threads: NPT per ASME B1.20.1

Pressure Ratings: Fittings: ASME B16.3
 Unions: ASME B16.39
 Bushings/Plugs: ASME B16.14

Pressure Testing: All malleable iron fittings are tested for through wall porosity using an air under water process.

Agency Approvals: All malleable iron fittings and unions are UL/ULC Listed and FM Approved.

PROJECT INFORMATION

APPROVAL STAMP

Project:	<input type="checkbox"/> Approved
Address:	<input type="checkbox"/> Approved as noted
Contractor:	<input type="checkbox"/> Not approved
Engineer:	Remarks:
Submittal Date:	
Notes 1:	
Notes 2:	