



H-BLOCK

Price Sheet H.BLOCK-10.12 | Effective: October 29, 2012

**FOR THE MOST CURRENT PRODUCT/PRICING INFORMATION ON ANVIL PRODUCTS,
PLEASE VISIT OUR WEBSITE AT WWW.ANVILINTL.COM**

FREIGHT ALLOWANCE:

All prices are F.O.B. point of shipment. On shipments weighing 2,500 pounds or more, rail freight or motor freight at the lowest published rate, is allowed to all continental U.S. rail points or all U.S. highway points listed in published tariffs (Alaska and Hawaii excluded). In no case will more than actual freight be allowed.

NOTE:

All orders are accepted on the basis of prices in effect at the time of shipment.

NOTICE:

To the prices and terms quoted, there will be added any manufacturers or sales tax payable on the transaction under any effective statute.

GENERAL

- UPC numbers are available upon request.
- To obtain current ISO certifications, listings, and other approvals, visit Anvil's Web site at www.anvilintl.com.
- Pricing is subject to change without notice. Go to Anvil's Web site for the most current list price information, or contact your local Anvil representative.

LOSS OR DAMAGE CLAIMS:

All goods are shipped at buyer's risk. Shipments should be carefully examined upon delivery and before the carrier's delivery receipt is signed. If any loss or damage is evident, the buyer should make an appropriate notation on the delivery receipt and insist that the carrier's driver initial such exception. The contents of all packages should be carefully examined for concealed damage as soon as possible after delivery, so that the carrier can be requested, within 48 hours after delivery, to arrange for prompt inspection of the damaged goods.

**NORTHERN REGION
CUSTOMER SERVICE CENTER
800-301-2701**

**SOUTHERN REGION
CUSTOMER SERVICE CENTER
800-451-4414**

www.anvilintl.com

1. CONTROLLING PROVISIONS:

These terms and conditions shall control with respect to any purchase order or sale of Seller's products. No waiver, alteration or modification of these terms and conditions whether on Buyer's purchase order or otherwise shall be valid unless the waiver, alteration or modification is specifically accepted in writing and signed by an authorized representative of Seller.

2. DELIVERY:

Seller will make every effort to complete delivery of products as indicated on Seller's acceptance of an order, but Seller assumes no responsibility or liability, and will accept no backcharge, for loss or damage due to delay or inability to deliver caused by acts of God, war, labor difficulties, accident, delays of carriers, by contractors or suppliers, inability to obtain materials, shortages of fuel and energy, or any other causes of any kind whatever beyond the control of Seller. Seller may terminate any contract of sale of its products without liability of any nature, by written notice to Buyer, in the event that the delay in delivery or performance resulting from any of the aforesaid causes shall continue for a period of sixty (60) days. Under no circumstances shall Seller be liable for any special or consequential damages or for loss, damage, or expense (whether or not based on negligence) directly or indirectly arising from delays or failure to give notice of delay.

3. WARRANTY:

Seller warrants for one year from the date of shipment Seller's manufactured products to the extent that Seller will replace those having defects in material or workmanship when used for the purpose and in the manner which Seller recommends. If Seller examination shall disclose to its satisfaction that the products are defective, and an adjustment is required, the amount of such adjustment shall not exceed the net sales price of the defective products only and no allowance will be made for labor or expense of repairing or replacing defective products or workmanship of damage resulting from the same. Seller warrants the products which it sells of other manufacturers to the extent of the warranties of their respective makers. Where engineering design or fabrication work is supplied. Buyer's acceptance of Seller's design or of delivery of work shall relieve Seller of all further obligation, other than expressed in Seller's product warranty. THIS IS SELLER'S SOLE WARRANTY. SELLER MAKES NO OTHER WARRANTY OF ANY KIND, EXPRESSED OR IMPLIED AND ALL IMPLIED WARRANTIES OF MERCHANTABILITY AND FOR A PARTICULAR PURPOSE WHICH EXCEED SELLER'S AFORESTATED OBLIGATION ARE HEREBY DISCLAIMED BY SELLER AND EXCLUDED FROM THIS WARRANTY. Seller neither assumes, nor authorizes any person to assume for it, any other obligation in connection with the sale of its engineering designs or products. This warranty shall not apply to any products or parts of products which (a) have been repaired or altered outside of Seller's factory, in any manner; (b) have been subjected to misuse, negligence or accidents; (c) have been used in a manner contrary to Seller's instructions or recommendations. Seller shall not be responsible for design errors due to inaccurate or incomplete information supplied by Buyer or its representatives.

4. SELLER'S LIABILITY:

Seller will not be liable for any loss, damage, cost of repairs, incidental or consequential damages of any kind, whether based upon warranty (except for the obligation accepted by Seller under "Warranty" above), contract or negligence, arising in connection with the design, manufacture, sale, use or repair of the products or of the engineering designs supplied to Buyer.

5. RETURNS:

Seller cannot accept return of any products unless its written permission has been first obtained, in which case same will be credited subject to the following (a) All material returned must, on its arrival at Seller's Plant, be found to be in first-class condition; if not, cost of putting in saleable condition will be deducted from credit memoranda; (b) A handling charge deduction of twenty percent (20%) will be made from all credit memoranda issued for material returned; (c) Transportation charges, if not prepaid will be deducted from credit memoranda.

6. SHIPMENTS:

All products sent out will be carefully examined, counted and packed. The cost of any special packing or special handling caused by Buyer's requirements or requests shall be added to the amount of the order. No claim for shortages will be allowed unless made in writing within ten (10) days of receipt of a shipment.

Claims for products damaged or lost in transit should be made on the carrier, as Seller's responsibility ceases, and title passes, on delivery to the carrier.

7. SPECIAL PRODUCTS:

Orders covering special or nonstandard products are not subject to cancellation except on such terms as Seller may specify on application.

8. PRICES AND DESIGNS:

Prices and designs are subject to change without notice. All prices are F.O.B. Point of shipment, unless otherwise stated.

9. TAXES:

The amount of any sales, excise or other taxes, if any, applicable to the products covered by this order, shall be paid by Buyer unless Buyer provides Seller with an exemption certificate acceptance to the taxing authorities.

10. NUCLEAR PLANTS:

Where the products, engineering design or fabrication is for nuclear plant applications. Buyer agrees (a) to take all necessary steps to add Seller as an insured under the American Nuclear Insurers' (ANI) pool and under the Mutual Atomic Energy Reinsurance Pool (MAERP) for property damage and liability insurance and if necessary steps could have been taken, but are not taken, Buyer shall hold Seller harmless against all such losses which could have been thus covered (b) Buyer agrees to hold Seller harmless with respect to any personal injury (or death), property damage or other loss in a nuclear incident which is caused directly or indirectly by defective design, material, workmanship furnished by Seller (or which could be so covered but with respect to which Buyer has elected to self-insure), and further agrees to waive subrogation by its carriers of such insurance against Seller, and (c) as to nuclear hazards for which Buyer cannot obtain insurance coverage, the liability of Seller for any personal injury (or death), property damage or other loss directly caused by defective design, material, or workmanship furnished by Seller shall not exceed the value at the time of the loss occurrence.

11. MINIMUM INVOICE:

Domestic: \$100 plus transportation.
International: \$500 plus transportation.

12. TERMS:

Cash, net 30 days unless otherwise specified.

NOTE: All orders are accepted on the basis of prices in effect at the time of shipment.

NOTICE: The prices and terms quoted, there will be added any manufacturers or sales tax payable on the transaction under any effective statute.

FREIGHT ALLOWANCE: All prices are F.O.B. point of shipment. On shipments weighing 2,500 pounds or more, rail freight or motor freight at the lowest published rate, is allowed to all continental U.S. rail points or all U.S. highway points listed in published tariffs (Alaska and Hawaii excluded). In no case will more than actual freight be allowed. Shipments (weighing less than 2,500 pounds) will be shipped prepaid. The buyer will be invoiced for freight costs at the applicable published class, exception or commodity rate(s) or charge(s). Anvil reserves the right to select the carrier for all shipments.



Model No. HBS-Base
Rubber Support

HBS-Base Rubber Support-Base Only					
MODEL NO.	HEIGHT	WIDTH	BASE LENGTH	WEIGHT EACH (LBS.)	SELL PRICE
HBS-Standard-Base Only	4" (101mm)	5" (127mm)	10 7/8" (276mm)	4.80	\$11.65



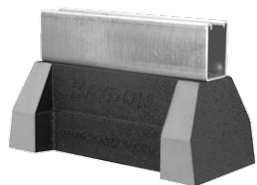
Model No. HBS
Series - H-164

HBS-Support With 1 3/16" H-164 Pre-Galv. Steel Channel								
MODEL NO.	HEIGHT	WIDTH	STRUT LENGTH	BASE LENGTH	WEIGHT EACH (LBS.)	NO. OF BASES REQUIRED	PRE-GALV SELL PRICE	HDG SELL PRICE
HBS-10-H-164-PG	4 7/8" (124mm)	5" (127mm)	9.312" (237mm)	10 7/8" (276mm)	5.62	1	\$15.71	\$19.38
HBS-24-H-164-PG			22.375" (568mm)	24" (610mm)	11.56	2	\$38.72	\$39.58
HBS-36-H-164-PG			34.375" (873mm)	36" (914mm)	17.41	3	\$54.85	\$57.74
HBS-48-H-164-PG			46.375" (1178mm)	48" (1219mm)	23.25	4	\$74.23	\$76.30



Model No. HBS
Series - H-132

HBS-Support With 1 5/8" H-132 Pre-Galv. Steel Channel								
MODEL NO.	HEIGHT	WIDTH	STRUT LENGTH	BASE LENGTH	WEIGHT EACH (LBS.)	NO. OF BASES REQUIRED	PRE-GALV SELL PRICE	HDG SELL PRICE
HBS-10-H-132-PG	5 5/8" (143mm)	5" (127mm)	9.312" (237mm)	10 7/8" (276mm)	6.26	1	\$17.77	\$21.39
HBS-24-H-132-PG			22.375" (568mm)	24" (610mm)	13.10	2	\$41.99	\$44.42
HBS-36-H-132-PG			34.375" (873mm)	36" (914mm)	19.77	3	\$58.96	\$63.38
HBS-48-H-132-PG			46.375" (1178mm)	48" (1219mm)	26.44	4	\$79.46	\$85.99



Model No. HBS-6
Series - H-122

HBS-Support With 2 7/16" H-122 Pre-Galv. Steel Channel								
MODEL NO.	HEIGHT	WIDTH	STRUT LENGTH	BASE LENGTH	WEIGHT EACH (LBS.)	NO. OF BASES REQUIRED	PRE-GALV SELL PRICE	HDG SELL PRICE
HBS-6-10-H-122-PG	6 7/16" (165mm)	5" (127mm)	9.312" (237mm)	10 7/8" (276mm)	6.69	1	\$23.24	\$26.49
HBS-6-24-H-122-PG			22.375" (568mm)	24" (610mm)	14.13	2	\$48.35	POA
HBS-6-36-H-122-PG			34.375" (873mm)	36" (914mm)	21.35	3	\$66.54	POA
HBS-6-48-H-122-PG			46.375" (1178mm)	48" (1219mm)	28.58	4	\$94.39	POA



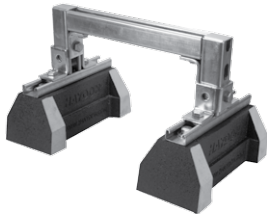
Model No. HBS-CE
Extension Series

HBS-Support With Threaded Rod Extension & 1 3/16" H-164 Pre-Galv. Steel Channel								
MODEL NO.	HEIGHT	WIDTH	STRUT LENGTH	STRUT SIZE	BASE LENGTH	WEIGHT EACH (LBS.)	PRE-GALV SELL PRICE	HDG SELL PRICE
HBS-CE10-8-H-164-PG	8" (203mm)	5" (127mm)	9.312" (237mm)	1 3/16" H-164	10 7/8" (276mm)	6.89	\$31.03	POA
HBS-CE10-12-H-164-PG	12" (305mm)					7.34	\$38.84	POA
HBS-CE24-16-H-132-PG	16" (406mm)					15.85	\$57.65	POA



Model No. HBS-CB
Bridge Series

Bridge Length Support With 2 HBS Bases & 1 ⁵ / ₈ " H-132 Pre-Galv. Steel Channel							
MODEL NO.	HEIGHT	WIDTH	STRUT LENGTH	BASE LENGTH	WEIGHT EACH (LBS.)	PRE-GALV SELL PRICE	HDG SELL PRICE
HBS-CB10-28-H-132-PG	5 ⁵ / ₈ " (143mm)	5" (127mm)	28" (711mm)	29 ³ / ₄ " (756mm)	13.96	\$46.30	POA
HBS-CB10-36-H-132-PG			36" (914mm)	37 ³ / ₄ " (959mm)	15.18	\$48.96	POA
HBS-CB10-42-H-132-PG			42" (1067mm)	43 ³ / ₄ " (1111mm)	16.09	\$54.99	POA
HBS-CB10-50-H-132-PG			50" (1270mm)	51 ³ / ₄ " (1314mm)	17.31	\$58.71	POA
HBS-CB10-60-H-132-PG			60" (1524mm)	61 ³ / ₄ " (1568mm)	18.84	\$64.67	POA



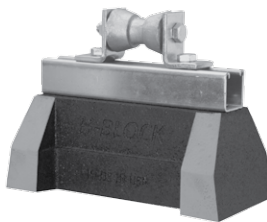
Model No.
HBS-CES-Medium

Raised Bridge Length With 2 HBS Bases 1 ⁵ / ₈ " H-132 Pre-Galv Steel Channel						
MODEL NO.	HEIGHT	BASE WIDTH	BASE LENGTH	WEIGHT EACH (LBS.)	PRE-GALV SELL PRICE	HDG SELL PRICE
HBS-CES-10-12-H-132-PG	10" (254mm)	18 ⁵ / ₈ " (473mm)	10 ⁷ / ₈ " (276mm)	19.35	\$110.85	POA
HBS-CES-10-24-H-132-PG		30 ⁵ / ₈ " (763mm)		21.05	\$117.40	POA



Model No.
HBS-CES-Heavy

Raised Bridge Length With 2 HBS Bases 3 ¹ / ₄ " H-132-A Pre-Galv Steel Channel						
MODEL NO.	HEIGHT	BASE WIDTH	BASE LENGTH	WEIGHT EACH (LBS.)	PRE-GALV SELL PRICE	HDG SELL PRICE
HBS-CES-16-24-H-132-A-PG	16" (406mm)	30 ⁵ / ₈ " (763mm)	10 ⁷ / ₈ " (276mm)	30.62	\$297.82	POA
HBS-CES-16-36-H-132-A-PG		42 ⁵ / ₈ " (1067mm)		32.96	\$327.60	POA



Model No. HBS-Roller
Series

HBS Base With 1 ⁵ / ₈ " H-132 Pre-Galv Steel Channel and Rollers							
MODEL NO.	OVERALL HEIGHT	PIPE SIZE (O.D.)	BASE LENGTH	WEIGHT EACH (LBS.)	NO. OF BASES REQUIRED	PRE-GALV SELL PRICE	HDG SELL PRICE
HBS-R10-1-2-H-132-PG	8" (203mm)	1" to 2" (25 to 51mm)	10 ⁷ / ₈ " (276mm)	9.13	1	\$47.56	POA
HBS-R10-2-3 ¹ / ₂ -H-132-PG		2" to 3 ¹ / ₂ " (51 to 89mm)		8.94	1	\$61.50	POA
HBS-R10-4-6-H-132-PG	8" (206mm)	4" to 6" (102 to 152mm)		9.37	1	\$71.92	POA
HBS-R24-8-10-H-132-PG	10 ⁵ / ₁₆ " (262mm)	8" to 10" (203 to 1254mm)	24" (610mm)	21.26	2	\$84.75	POA



Model No. HBS-DSFW
Fixed Width
Duct Support

Duct Support With Fixed Width and Adjustable Height (All hardware required for assembly is included)

MODEL NO.	WIDTH	HEIGHT	NO. OF BASES	WEIGHT EACH (LBS.)	PRE-GALV SELL PRICE	HDG SELL PRICE
HBS-DS2FW-23-18-H-132-PG	18" (457mm)	23" (584mm)	4	39.80	\$164.20	POA
HBS-DS2FW-23-24-H-132-PG	24" (610mm)		4	40.67	\$168.34	POA
HBS-DS2FW-23-36-H-132-PG	36" (914mm)		4	42.33	\$172.56	POA
HBS-DS2FW-23-48-H-132-PG	48" (1219mm)		4	43.99	\$176.62	POA

MODEL NO.	WIDTH	HEIGHT	NO. OF BASES	WEIGHT EACH (LBS.)	PRE-GALV SELL PRICE	HDG SELL PRICE
HBS-DS2FW-29-18-H-132-PG	18" (457mm)	29" (737mm)	4	41.58	\$182.50	POA
HBS-DS2FW-29-24-H-132-PG	24" (610mm)		4	42.41	\$186.87	POA
HBS-DS2FW-29-36-H-132-PG	36" (914mm)		4	44.08	\$191.33	POA
HBS-DS2FW-29-48-H-132-PG	48" (1219mm)		4	45.74	\$195.80	POA

MODEL NO.	WIDTH	HEIGHT	NO. OF BASES	WEIGHT EACH (LBS.)	PRE-GALV SELL PRICE	HDG SELL PRICE
HBS-DS2FW-41-18-H-132-PG	18" (457mm)	41" (1041mm)	4	45.07	\$189.10	POA
HBS-DS2FW-41-24-H-132-PG	24" (610mm)		4	45.90	\$192.67	POA
HBS-DS2FW-41-36-H-132-PG	36" (914mm)		4	47.56	\$194.46	POA
HBS-DS2FW-41-48-H-132-PG	48" (1219mm)		4	49.22	\$198.03	POA

MODEL NO.	WIDTH	HEIGHT	NO. OF BASES	WEIGHT EACH (LBS.)	PRE-GALV SELL PRICE	HDG SELL PRICE
HBS-DS3FW-53-18-H-132-PG	18" (457mm)	53" (1346mm)	6	62.23	\$176.78	POA
HBS-DS3FW-53-24-H-132-PG	24" (610mm)		6	63.06	\$180.02	POA
HBS-DS3FW-53-36-H-132-PG	36" (914mm)		6	64.72	\$183.26	POA
HBS-DS3FW-53-48-H-132-PG	48" (1219mm)		6	66.38	\$186.51	POA



Model No. HBS-DSAW
Adjustable Width
Duct Support

Duct Support With Adjustable Width and Height (All hardware required for assembly is included)

MODEL NO.	WIDTH		HEIGHT	NO. OF BASES	WEIGHT EACH (LBS.)	PRE-GALV SELL PRICE	HDG SELL PRICE
	MINIMUM	MAXIMUM					
HBS-DSAW-29-20-26-H-132-PG	19 ¹ / ₄ " (489mm)	26 ³ / ₄ " (679mm)	28.813" (732mm)	2	29.61	\$187.82	POA
HBS-DSAW-29-25-39-H-132-PG	24 ⁷ / ₈ " (632mm)	39 ⁷ / ₈ " (1013mm)		2	31.19	\$213.14	POA
HBS-DS2AW-29-38-62-H-132-PG	38" (965mm)	62 ³ / ₈ " (1575mm)		4	46.47	\$222.74	POA
HBS-DS3AW-29-63-103-H-132-PG	62 ³ / ₈ " (1584mm)	103 ⁵ / ₈ " (2617mm)		6	66.90	\$263.76	POA

MODEL NO.	WIDTH		HEIGHT	NO. OF BASES	WEIGHT EACH (LBS.)	PRE-GALV SELL PRICE	HDG SELL PRICE
	MINIMUM	MAXIMUM					
HBS-DSAW-36-20-26-H-132-PG	19 ¹ / ₄ " (489mm)	26 ³ / ₄ " (679mm)	36" (914mm)	2	30.61	\$189.75	POA
HBS-DSAW-36-25-39-H-132-PG	24 ⁷ / ₈ " (632mm)	39 ⁷ / ₈ " (1013mm)		2	32.19	\$214.08	POA
HBS-DS2AW-36-38-62-H-132-PG	38" (965mm)	62 ³ / ₈ " (1575mm)		4	47.47	\$223.81	POA
HBS-DS3AW-36-63-103-H-132-PG	62 ³ / ₈ " (1584mm)	103 ⁵ / ₈ " (2617mm)		6	67.90	\$264.35	POA



CORPORATE OFFICES

2 Holland Way
Exeter, NH 03833
Tel: 603-418-2800 • Fax: 603-418-2833
E-mail: sales@anvilintl.com

CUSTOMER SERVICE CENTERS

UNITED STATES

University Park, IL
Tel: 708-885-3000 • Fax: 708-534-5441
Toll Free: 1-800-301-2701

Irving, TX
Tel: 972-871-1206 • Fax: 972-641-8946
Toll Free: 1-800-451-4414

CANADA

Simcoe, Ontario
Tel: 519-426-4551 • Fax: 519-426-5509

EUROPE AND MIDDLE EAST

Tel: +31-53-5725570 • Fax: +31-53-5725579
International Customer Service
Tel: +1-708-885-3000 • Fax: +1-708-534-5441

MEXICO, PUERTO RICO AND LATIN AMERICA

International Customer Service
Tel: +1-708-885-3000 • Fax: +1-708-534-5441

U.S. REGIONAL DISTRIBUTION CENTERS

UNIVERSITY PARK

750 Central Avenue
University Park, IL 60484

IRVING

1401 Valley View Lane, Suite 150
Irving, TX 75061

COLUMBIA

800 Malleable Road
Columbia, PA 17512

ONTARIO

1470 S. Vintage Avenue
Ontario, CA 91761

ANVIL EPS

Engineered Pipe Supports
Customer Service Center

160 Frenchtown Road
North Kingstown, RI 02852

Tel: 401-886-3000
Fax: 401-886-3010
Toll Free: 1-877-406-3108

additional INVENTORY LOCATIONS*

UNITED STATES: Arizona, Colorado, Georgia, Indiana, Massachusetts, Minnesota, Missouri, New York, Tennessee, Texas, Washington and Wisconsin

INTERNATIONAL: Ontario, Canada

*Inventory varies at locations

#553 Printed in USA / ©2012
Revision: January 11, 2013

BUILDING CONNECTIONS THAT LAST



www.anvilintl.com