

Yale 70 Series Door Closers

Installation Instructions

NON HOLD-OPEN: 71 THRU 75

HOLD-OPEN: 172 THRU 175

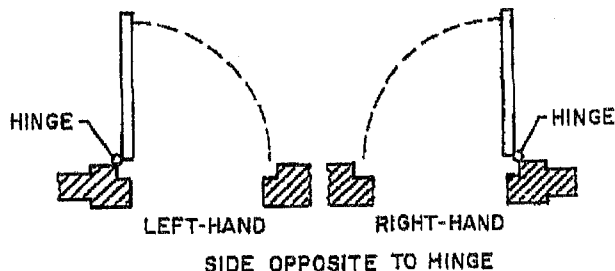
FUSIBLE LINK HOLD-OPEN:
173F THRU 175F

STANDARD INSTALLATION

REGULAR OR 16" MAIN ARM

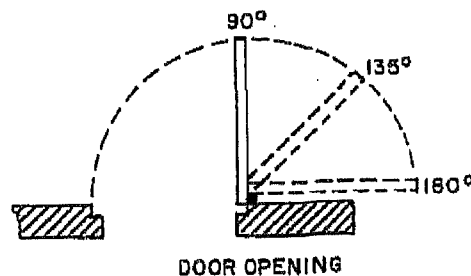
1 HAND OF DOOR

SELECT PROPER SIDE OF TEMPLATE FOR RIGHT-HAND OR LEFT-HAND DOOR. WITH CLOSER INSTALLATIONS, THE HAND OF THE DOOR IS DETERMINED BY STANDING ON THE SIDE OPPOSITE THE HINGE.



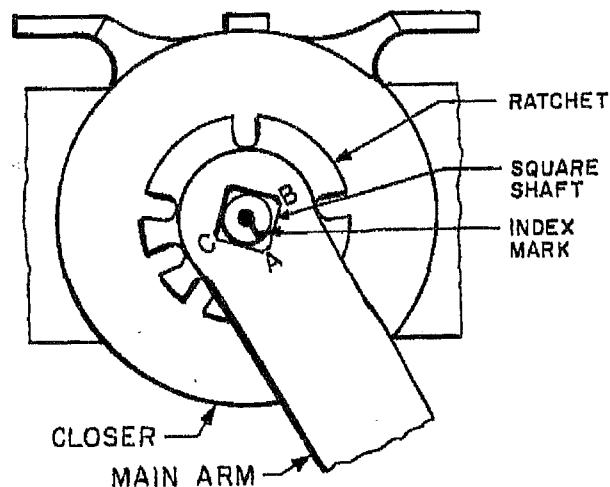
2 DOOR OPENING

SELECT THE DEGREE OF OPENING DESIRED AND FOLD THE TEMPLATE ON THE PROPER HINGE CENTER LINE FOR YOUR OPENING. 180° DOOR OPENING REQUIRES 16" MAIN ARM WHICH MUST BE ORDERED.



3 ASSEMBLING MAIN ARM TO CLOSER

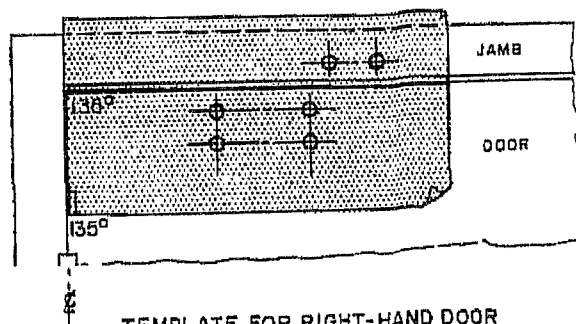
REMOVE NUT FROM SQUARE SHAFT ON TOP OF CLOSER. ATTACH MAIN ARM TO SHAFT BY POSITIONING "A" ON ARM WITH INDEX MARK ON TOP OF SHAFT AS SHOWN. REPLACE NUT, HOLDING MAIN ARM ON SHAFT. THIS "A" POSITION IS FOR BOTH RIGHT-HAND OR LEFT-HAND DOORS FOR STANDARD INSTALLATION (HINGE SIDE).



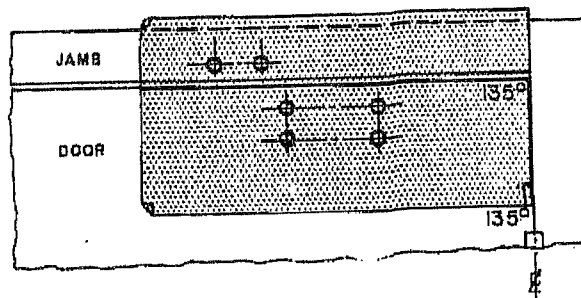
4 USE OF TEMPLATE

FOLD TEMPLATE ON HINGE $\frac{1}{2}$ OF DEGREES OF DOOR OPENING REQUIRED (135° ILLUSTRATED)

LINE UP TOP EDGE OF DOOR WITH DOOR LINE ON TEMPLATE. LOCATE REQUIRED HOLES AS SHOWN ON TEMPLATE FOR WOOD OR METAL DOOR AND JAMB. (4 HOLES REQUIRED FOR CLOSER AND 2 HOLES REQUIRED FOR ARM BRACKET).



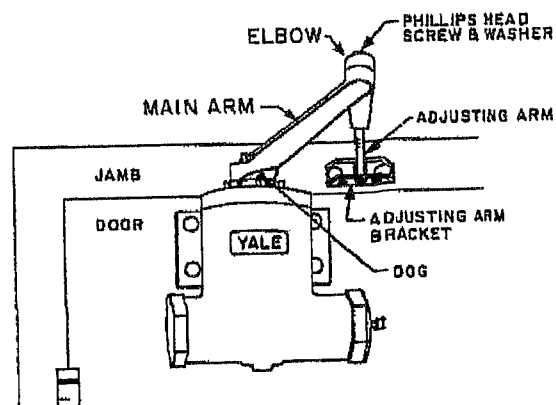
TEMPLATE FOR RIGHT-HAND DOOR
FOR MOUNTING HOLES



TEMPLATE FOR LEFT-HAND DOOR
FOR MOUNTING HOLES

5 ATTACHING CLOSER

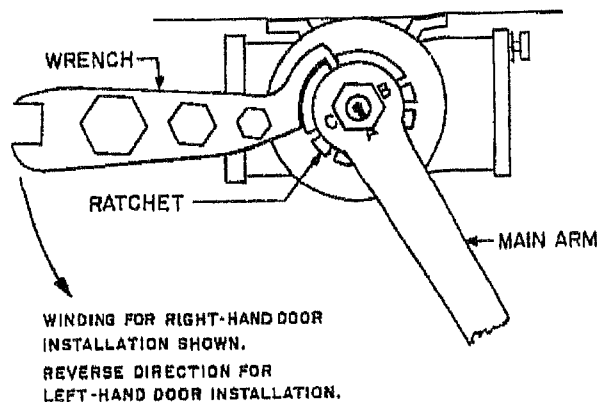
ATTACH CLOSER TO DOOR AND ADJUSTING ARM BRACKET TO JAMB. THE SECONDARY OR ADJUSTING ARM SHOULD BE PERPENDICULAR TO THE JAMB. THIS IS OBTAINED ON A NON HOLD-OPEN CLOSER BY SEPARATING ARMS AT THE ELBOW, BY REMOVING PHILLIPS HEAD SCREW AND LIFTING ADJUSTING ARM OFF THE MAIN ARM POST. ADJUST ROD LENGTH AS REQUIRED. REPLACE ADJUSTING ARM ON MAIN ARM POST, LOCKING WITH WASHER AND PHILLIPS HEAD SCREW. FOR HOLD-OPEN CLOSER A SETSCREW, SHOWN IN PICTURE IN STEP 8 IS USED INSTEAD OF THE LOCKNUT.



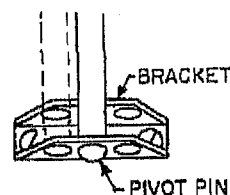
RIGHT-HAND DOOR INSTALLATION
SHOWN

6 INCREASING SPRING POWER

USE THE WRENCH SUPPLIED TO TURN THE RATCHET TO WIND THE SPRING. ENGAGE DOG ON MAIN ARM INTO ONE OF THE NOTCHES IN THE RATCHET. TEST DOOR; IF MORE CLOSING POWER IS NEEDED, USE WRENCH AGAIN AND CONTINUE TO TURN IN DIRECTION SHOWN. RELEASE DOG WHEN PRESSURE IS RELEASED AND PRESS IT DOWN UNTIL IT GOES INTO ANOTHER NOTCH. THIS IS REPEATED, NOTCH AFTER NOTCH, UNTIL NECESSARY POWER IS OBTAINED. USUALLY ONE OR TWO NOTCHES WILL BE SUFFICIENT.



DO NOT WIND SPRING MORE THAN IS NECESSARY TO CLOSE THE DOOR PROPERLY. IF ADDITIONAL POWER ADJUSTMENT IS STILL REQUIRED IT CAN BE OBTAINED AT THE ADJUSTING ARM BRACKET, BY MOVING THE PIVOT PIN FROM ITS CENTER HOLE LOCATION TO THE HOLE NEARER THE CLOSER FOR GREATER POWER. MOVING THE PIVOT PIN TO THE HOLE AWAY FROM THE CLOSER REDUCES POWER.



7 ADJUSTMENTS

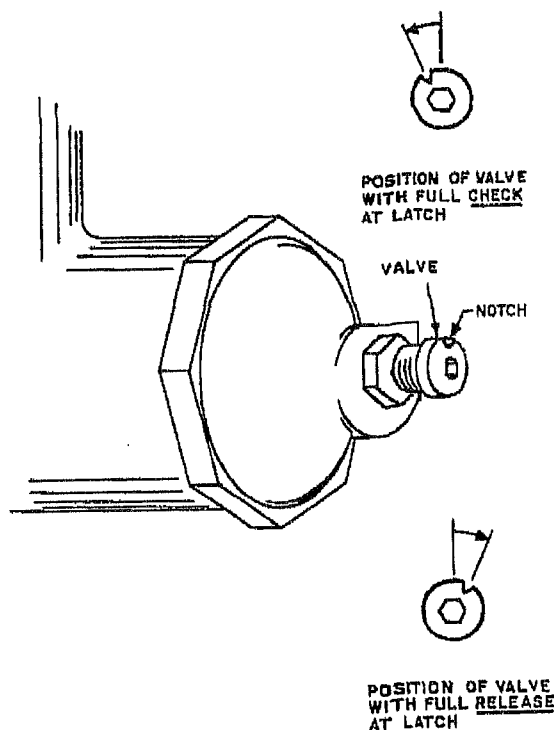
SPEED ADJUSTMENT REGULATES CLOSING FROM FULL OPENING OF DOOR TO WITHIN A FEW INCHES OF LATCH.

TO MAKE THIS ADJUSTMENT, TURN VALVE IN OR OUT ONE FULL TURN AT A TIME, ALWAYS LEAVING NOTCH AT TOP.

LATCH ADJUSTMENT REGULATES VALVE AT LATCH POINT.

TO MAKE THIS ADJUSTMENT START WITH NOTCH ON VALVE AT TOP AND USE SMALL FRACTIONAL TURNS TO LEFT OR RIGHT EXPERIMENTALLY.

USE 1/8" ALLEN KEY.

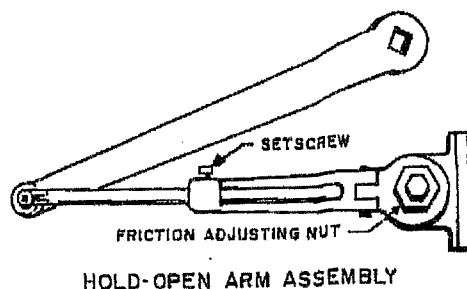


8 ADJUSTING HOLD-OPEN ARM

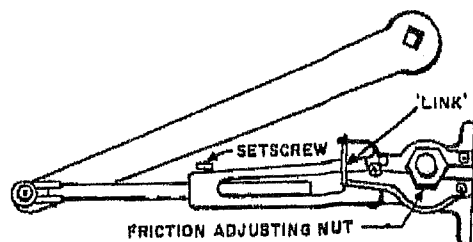
(ONLY ON CLOSERS No. 172 THRU 175 AND No. 173F THRU 175F)

CHECK THE NUMBER OF YOUR CLOSER TO SEE IF IT IS A HOLD-OPEN AND TO WHAT HOLD-OPEN DEGREE IT CAN BE USED, AS LISTED BELOW.

- LOOSEN FRICTION ADJUSTING NUT.
- OPEN DOOR TO APPROXIMATELY 5° LESS THAN HOLD-OPEN POSITION.
- TIGHTEN NUT.



HOLD-OPEN ARM ASSEMBLY



FUSIBLE LINK HOLD-OPEN ARM ASSEMBLY

CLOSER NO.	DEGREE OF HOLD OPEN
WITH REGULAR MAIN ARM	
172 THRU 175	TO 135°
173F THRU 175F	TO 135°
WITH 16" MAIN ARM	
172 THRU 175	TO 180°
173F THRU 175F	TO 180°

FUSIBLE LINK HOLD-OPEN ARM IS HANDED AND CANNOT BE REVERSED. L.H. OR R.H. IS INDICATED AFTER THE NUMBER e.g. (173F R.H.).

FUSIBLE LINK REGULARLY SUPPLIED RELEASES AT 125°F (IDENTIFIED BY YELLOW 'LINK'). OTHER RELEASE TEMPERATURES AVAILABLE BY SPECIAL ORDER ARE:
135°F, RED 'LINK'
160°F, UNPAINTED 'LINK'

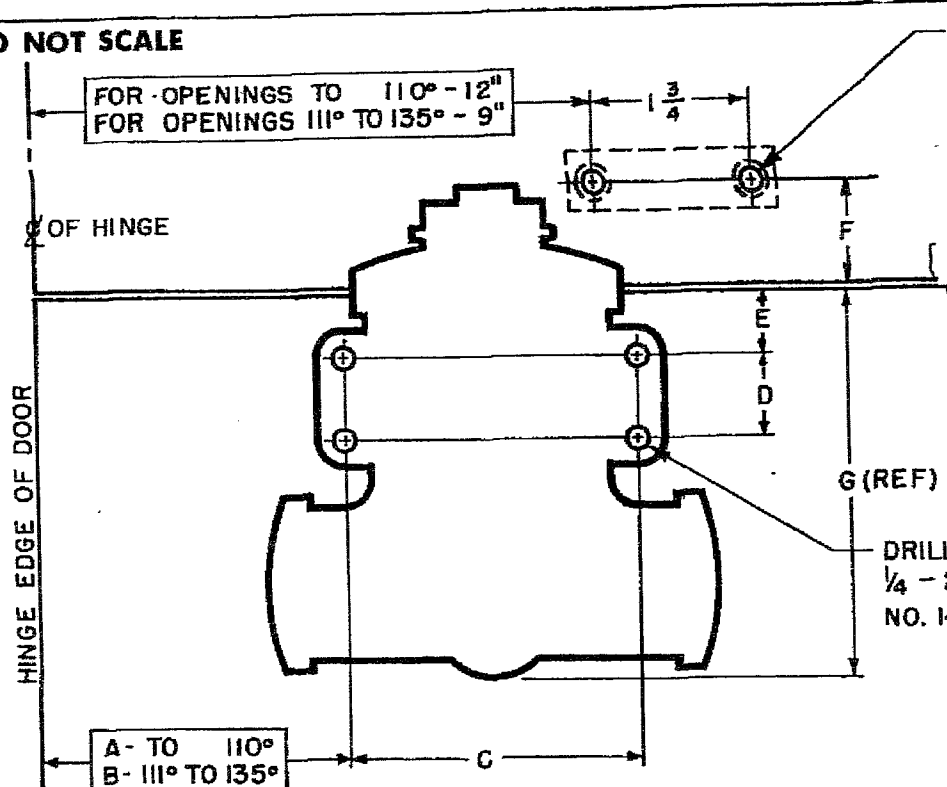
9 PARALLEL ARM INSTALLATION

IF YOU HAVE A PARALLEL ARM INSTALLATION FOLLOW THE INSTRUCTION SHEET FOR PA70 SERIES DOOR CLOSERS, PARALLEL ARM INSTALLATION.

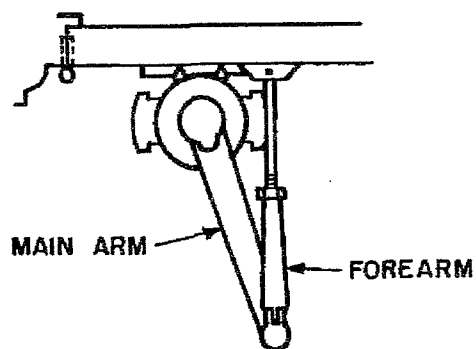
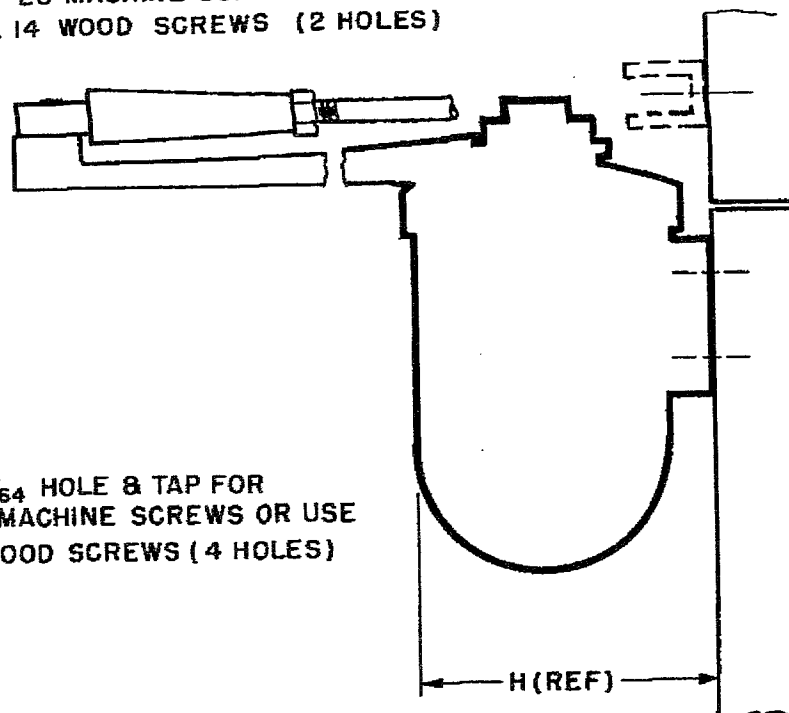
10 CORNER OR SOFFIT BRACKET INSTALLATION

IF YOU HAVE CORNER OR SOFFIT BRACKET INSTALLATION USE CORNER BRACKET TEMPLATE PACKED WITH BRACKET AND THIS INSTRUCTION SHEET.

DO NOT SCALE



DRILL $\frac{13}{64}$ HOLE & TAP FOR $\frac{1}{4}$ - 20 MACHINE SCREWS OR USE NO. 14 WOOD SCREWS (2 HOLES)



POSITION OF ARMS

RIGHT HAND DOOR SHOWN

DOOR CLOSER - 70 SERIES								
CLOSER LIST NO.	OPEN. 110° A	111°-135° B	C	D	E	$\frac{1}{4}$ F	G	H
71	8 $\frac{11}{16}$	5 $\frac{11}{16}$	2 $\frac{21}{32}$	2 $\frac{25}{32}$	$\frac{3}{4}$	1 $\frac{1}{8}$	3 $\frac{5}{8}$	3 $\frac{1}{8}$
72	8 $\frac{3}{8}$	5 $\frac{3}{8}$	3 $\frac{7}{32}$	1	1	1 $\frac{3}{16}$	4 $\frac{5}{8}$	3 $\frac{7}{16}$
73	8 $\frac{1}{8}$	5 $\frac{1}{8}$	3 $\frac{1}{16}$	1 $\frac{1}{8}$	$\frac{7}{8}$	1 $\frac{7}{32}$	5 $\frac{1}{8}$	3 $\frac{11}{16}$
74	7 $\frac{15}{16}$	4 $\frac{15}{16}$	4 $\frac{5}{32}$	1 $\frac{11}{32}$	2 $\frac{7}{32}$	1 $\frac{9}{32}$	5 $\frac{7}{8}$	3 $\frac{15}{16}$
75	7 $\frac{3}{4}$	4 $\frac{15}{16}$	4 $\frac{7}{16}$	1 $\frac{15}{32}$	1 $\frac{3}{16}$	1 $\frac{3}{8}$	6 $\frac{5}{8}$	4 $\frac{1}{4}$

MOUNTING DIMENSIONS FOR WOOD OR METAL DOOR
 SERIES: - 70 DOOR CLOSERS - MODEL 66 - REGULAR ARM
 APPLICATION: - STANDARD



YALE LOCK AND
 RYE, NEW YORK 100
 T.E.M.

No. 80-7370