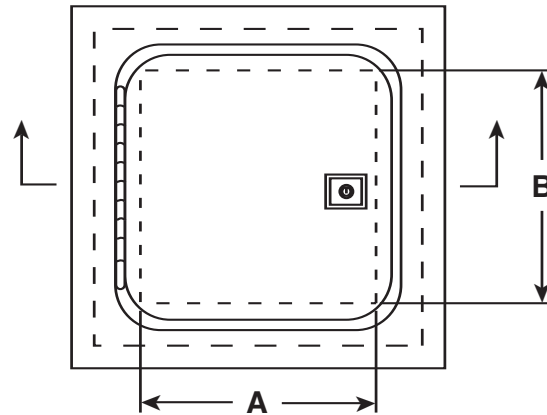


DETAIL & SUBMITTAL SHEET



FRONT
ELEVATION



SPECIFICATIONS:

Door: 14 ga. steel. Inside of door has rolled safety edges for operator protection

Frame: 16 ga. steel, 2 1/2" deep

Insulation: 2" thick mineral wool (THERMAFIBER®), sandwiched between two pieces of 22 ga. steel

Hinge: Continuous piano hinge allows opening to 180°

Latches: Specially designed Ultra Lock—self-latching keyed cylinder paddle latch (WB 151 key code)

Automatic Panel Closer: Furnished on all doors. Vertical position only.

Inside Panel Release: Furnished on all doors

Finish: Grey baked enamel coat

OPTIONS:

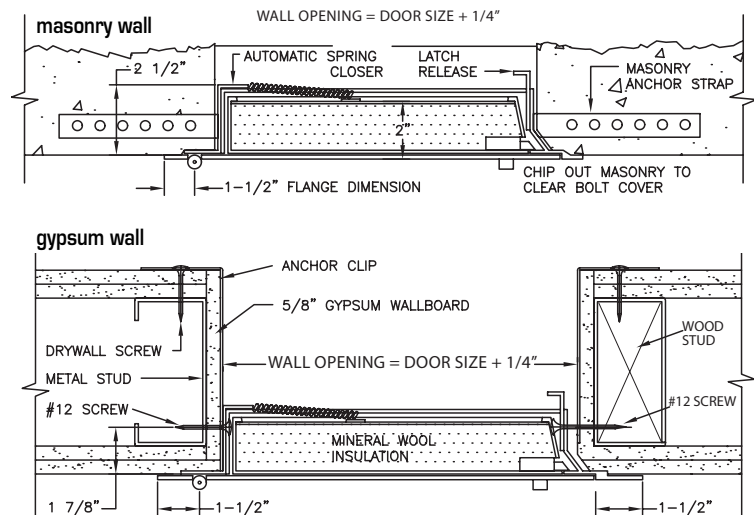
Finishes:

- ☐ Stainless Steel Type 304 No. 4 Satin Finish Brushed
- ☐ Stainless Steel Type 316 No. 4 Satin Finish Brushed

Options:

- ☐ Mortise Best Lock
- ☐ Hot Smoke Seal gasketing all 4 sides**
- ☐ Zinc Dipped
- ☐ Special sizes available

SECTION DETAIL



This heavy duty fire-rated door is made of 14 ga. steel and has the added benefit of rolled safety edges for operator protection. This door can be used in any wall location which must have a fire rating.

** Hot Smoke Seal™ fire tested: Listed to meet the requirements of standards UL10B, UL10C, UBC 7-2, Part 1 and BS476: 1987 for application to fire rated door assemblies.



THERMAFIBER® Industrial Felt insulation for optimal **fire protection** (rated noncombustible by NFPA Standard 220 when tested in accordance with ASTM E136 and withstands ASTM E119) and **superior sound control** USG tested per ASTM C165: 8 pcf STC 15-2" thickness



UL, Northbrook, IL – 1-1/2 hour "B" level 450 degrees F (250 degrees C) maximum temperature rise in 30 minutes for vertical wall installations only. Test file number R-10364. California State Marshall approval # 3325.1246.103. This door may be used in a two hour fire rated wall assembly



Warnock Hersey International; Pittsburgh, CA – 1-1/2 hour fire rated for vertical wall assembly only. Issue # 7165

✓	Item No.	Door Size W x H	Wall Opening	Slam Catch	Ship Wt. Lbs.
	FR PRE 700	8 x 8	8 1/4 x 8 1/4	1	7
	FR PRE 700	12 x 12	12 1/4 x 12 1/4	1	17
	FR PRE 700	16 x 16	16 1/4 x 16 1/4	1	24
	FR PRE 700	18 x 18	18 1/4 x 18 1/4	1	28
	FR PRE 700	24 x 24	24 1/4 x 24 1/4	1	41

Project: _____ Date: _____

Contractor: _____ Architect: _____

Sizes: _____ Quantity: _____ Approval Initials: _____



Corporate Office: 1330 Progress Drive • Front Royal, VA 22630
Phone: 1-800-255-5515 • Fax: 1-800-822-5001

www.wbdoors.com