


COLONIAL  
*and Early*  
ENGLISH  
HARDWARE



HANDCRAFT



# P. & F. Corbin

The American Hardware Corporation Successor

MAKERS OF

LOCKS AND BUILDERS' HARDWARE

NEW BRITAIN, CONNECTICUT

NEW YORK  
CHICAGO  
PHILADELPHIA

Our New Catalogue of  
Colonial and Early English Hardware

---

You will find this worthy of a careful study. We have added many attractive articles not appearing in our former catalogue, and the assortment is complete in kind and varied in design. There is a wide range in choice to suit the purchaser's taste.

Every piece is individual. No two are exactly alike. They are finished by hand hammers, imparting the same appearance as the goods of this type when first made by artist-blacksmiths. Many of the articles are direct reproductions of historic pieces.

The finishes are pleasing and lasting. The EH finish is being adopted for college buildings where the ability to withstand hard usage without change in appearance is important. The DH finish is also in general favor. The wrought iron hardware is especially treated to prevent rust.

The handles and knobs and escutcheons are made to fit the locks. There is no adaptation necessary when the hardware is applied. The Corbin policy of completeness and high quality is carried through in this line.

We commend the line to your favor.

Yours truly,

P. & F. CORBIN Division

JBComstock/MC

Good Buildings Deserve Good Hardware.



# COLONIAL AND EARLY ENGLISH HARDWARE

ALTHOUGH the articles on the pages of this book have been given the title "Colonial and Early English Hardware," there will be found in it designs of Spanish and Gothic origin. There were no hard and fast influences governing the original designers of this class of hardware, each working into his product motives recalled from a previous age or resulting from a personal taste. Because of this freedom of the early designers, it has been made possible to select the hardware for residences of these types with less restraint than for those of other periods.

P. & F. CORBIN

THE AMERICAN HARDWARE CORPORATION, SUCCESSOR

*NEW BRITAIN, CONN.*

*U. S. A.*

CATALOGUE No. K 527



ALPHABETICAL INDEX — PART I

COLONIUM OR BRONZE METAL

<i>Article</i>	<i>Page</i>	<i>Article</i>	<i>Page</i>	<i>Article</i>	<i>Page</i>
Adjuster, Casement . . . . .	37	Fasteners, Sash . . . . .	37	Locks, Mortise Knob . . . . .	17
Auxiliary Roses . . . . .	11	H and HL Hinges . . . . .	33	“ “ Knob for Levers . . . . .	18, 19
Bar Latches . . . . .	38	H and HL Hinge Plates . . . . .	32	“ Rim Knob . . . . .	15, 16
Bar, Reverse Bevel Latch and Strike . . . . .	25	Handles, Entrance Door . . . . .	5-7	Plates, Hinge, for Cabinets . . . . .	33
Bolts . . . . .	39	“ Drop . . . . .	15	“ “ Entrance Doors . . . . .	26-31
Buttons, Electric Push . . . . .	24	“ Interior Door . . . . .	14	“ “ Shutters . . . . .	28
Butts . . . . .	34	“ Lever . . . . .	12, 13	“ H and HL Hinge . . . . .	32
Casement Adjuster . . . . .	37	Hinge Plates for Cabinets . . . . .	33	“ Push . . . . .	9
“ Fastener . . . . .	35-37	“ “ Entrance Doors . . . . .	26-31	Pulls, Drawer . . . . .	38
Collars, Cylinder, for Handles . . . . .	5-7	“ “ Shutters . . . . .	28	“ Ring Door . . . . .	15
“ “ Levers . . . . .	13	Interior Door Escutcheons . . . . .	9	Push Plate . . . . .	9
“ “ with Dust Cap . . . . .	7, 13	“ “ Handles . . . . .	14	Quadrant, for Dutch Doors . . . . .	39
Communicating Door Lock . . . . .	17	Key Escutcheons . . . . .	11	Reverse Bevel, Latch Bar and Strike . . . . .	25
Dog, Shutter . . . . .	38	Knob Roses . . . . .	10	Rim Knob Locks . . . . .	15, 16
Door Knobs . . . . .	10	Knobs, Door . . . . .	10	Ring Door Pull . . . . .	15
“ Knockers . . . . .	22, 23	“ Thumb . . . . .	25	Roses, Auxiliary . . . . .	11
“ Stop . . . . .	38	Knockers, Door . . . . .	22, 23	“ Knob . . . . .	10
Drawer Pulls . . . . .	38	Latches, Bar . . . . .	38	“ Lever . . . . .	12, 13
Drop Handles . . . . .	15	“ Mortise Knob . . . . .	17	Safety Closet Spindle . . . . .	25
Dutch Door Quadrant . . . . .	39	“ Mortise for Thumb Latches . . . . .	21	Sash Fastener . . . . .	37
Electric Push Buttons . . . . .	24	“ Thumb . . . . .	14	Sash Lifts . . . . .	37
Entrance Door Handles . . . . .	5-7	Lever Handles . . . . .	12, 13	Shutter Dog . . . . .	38
Escutcheons for Entrance Doors . . . . .	8	“ Roses . . . . .	12, 13	Spindle, Safety Closet . . . . .	25
“ “ Interior . . . . .	9	Lifts, Sash . . . . .	37	Stop, Door . . . . .	38
“ Key . . . . .	11	Locks, Mortise Communicating Door . . . . .	17	Studs . . . . .	38
Fasteners, Casement . . . . .	35-37	“ “ Front Door . . . . .	20, 21	Thumb Knobs . . . . .	25
				“ Latches . . . . .	14

ALPHABETICAL INDEX — PART II

WROUGHT IRON

<i>Article</i>	<i>Page</i>	<i>Article</i>	<i>Page</i>	<i>Article</i>	<i>Page</i>
Adjuster, Casement . . . . .	46	Butterfly Hinge . . . . .	45	Drive Screws . . . . .	44
Bars, Latch . . . . .	41-43	Casement Adjusters . . . . .	46	Drop Handles . . . . .	44
Bar Latches . . . . .	47	“ Fasteners . . . . .	46	Entrance Door Handles . . . . .	41, 42
Bolts . . . . .	47	Cylinder Collars . . . . .	41, 42	Escutcheon, Key . . . . .	44
“ Garage Door . . . . .	48	Dogs, Shutter . . . . .	46	Fasteners, Casement . . . . .	46
		Door Knockers . . . . .	44	Foot Scraper . . . . .	44
		“ Pulls . . . . .	48	Garage Door Bolt . . . . .	48
				“ “ Holder . . . . .	48
				“ “ Lock . . . . .	48
				H and HL Hinges . . . . .	45
				Handles, Drop . . . . .	44
				“ Entrance Door . . . . .	41, 42
				“ Lever . . . . .	44
				Hinges, Butterfly . . . . .	45
				“ H and HL . . . . .	45
				“ T . . . . .	48
				Hinge Plates . . . . .	45
				Holder, Garage Door . . . . .	48
				Key Escutcheon . . . . .	44
				Knockers, Door . . . . .	44
				Latches, Bar . . . . .	47
				“ Rim Knob . . . . .	47
				“ Thumb . . . . .	41-43
				Latch Bar . . . . .	41, 43
				Lever Handles . . . . .	44
				Lock, Garage Door . . . . .	48
				Plates, Hinge . . . . .	45
				Pulls, Door . . . . .	48
				Rim Knob Latches . . . . .	47
				Roses . . . . .	44
				Scraper, Foot . . . . .	44
				Screws, Drive . . . . .	44
				Shutter Dogs . . . . .	46
				T Hinges . . . . .	48
				Thumb Latches . . . . .	41-43





NUMERICAL INDEX

PART I

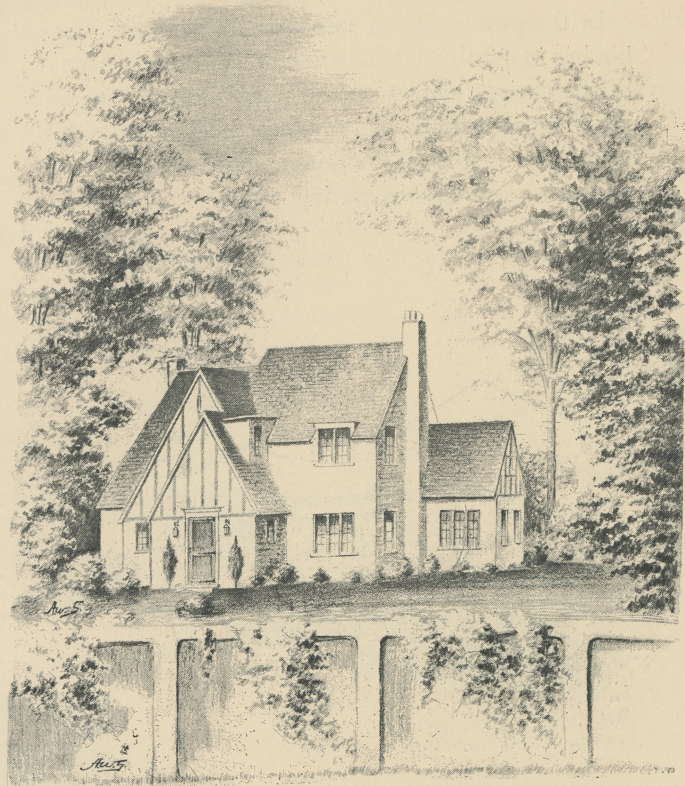
COLONIUM OR BRONZE METAL

No.	Page	No.	Page	No.	Page	No.	Page	No.	Page	No.	Page
565	14	7117	10	7320	38	7645	38	7795	17	53061	24
576	14	7117½	10	7330	38	7647	38	7795½	17	53084	6
579	14	7118	10	7343	20	7648	38	7830½	37	53113	6
581	14	7120	33	7349½	20	7649	38	7904	10	53161	24
587	14	7120½	12	7357½	21	7652	38	7909	10	53184	6
7001½	12	7125	33	7364½	39	7653	38	7912	23	53213	6
7002	13	7129	13	7365	38	7655	38	7913	23	53261	24
7003	13	7130	33	7372	23	7657	38	7916	38	53284	6
7005	11	7135	33	7373	22	7658	38	7917½	22	53313	6
7009	13	7145	25	7374	23	7659	38	7918	10	53349	25
7015	34	7177	21	7375	22	7660	38	7919	10	53361	24
7018	12	7190	11	7376	23	7700	30	7920	10	53384	6
7019	12	7191	11	7377	22	7704	26	50013	13	56013	7
7020	32	7192	11	7378	23	7704C	31	50014	13	56061	24
7022	12	7193	11	7379	22	7705	26	50413	5	56084	7
7025	32	7200	11	7380	23	7705C	31	50461	24	56113	7
7029	13	7201	11	7409	16	7710	28	50484	5	56114	7
7030	32	7202	11	7419	15	7714	27	51213	5	56161	24
7034¼	25	7203	11	7420	35	7721	29	51261	24	56184	7
7035	32	7204	11	7422	35	7723	29	51284	5	56213	7
7045	17	7205	11	7423	35	7724	31	52113	5	56214	7
7048	25	7206	11	7424	36	7732	30	52161	24	56261	24
7049	25	7207	11	7430	36	7733	30	52184	5	56284	7
7050	37	7210	9	7451	16	7734	38	52613	5	56413	7
7059	17	7218	37	7455	16	7735 lift	37	52661	24	56461	24
7061½	34	7242	11	7460	36	7735 Pull	38	52684	5	56484	7
7065	18	7245	8	7461	37	7737	38	52813	5	56578	14
7065½	18	7247	10	7501	25	7748	28	52861	24	57678	14
7074	19	7252	8	7519½	10	7751	33	52884	5	57978	14
7074½	19	7260	15	7560	39	7753	30	52913	6	58013	7
7101	34	7261	15	7561	39	7755	29	52961	24	58061	24
7103	10	7263	9	7562	39	7756	30	52984	6	58084	7
7104	13	7264	9	7580½	39	7762	31	53013	6	58178	14
7105	12	7265	18	7582	39					58778	14
7106	12	7265½	18	7585	39						
7107	12	7266	15	7600	9						
7109	13	7278	8	7607	10						
7110	12	7279	9	7608	10						
7111	12	7286	15	7639	38						
7112	12	7289	25	7640	38						
7113	12	7291	8	7642	38						
7114	12	7292	8	7643	38						
7115	13	7304	38	7644	38						

PART II

WROUGHT IRON

No.	Page	No.	Page	No.	Page
3	48	9086	48	9582	47
200	48	9090	44	9721	45
961	41	9112	44	9722	45
962	41	9113	42	9723	45
963	41	9120	45	9724	45
964	42	9125	45	9725	45
965	42	9186	48	9726	45
966	41	9200	44	9730	48
979	43	9213	41	9731	48
980	43	9260	44	9914	46
981	43	9260½	44	9915	46
982	43	9313	41	9916	46
983	43	9320	47	9917	46
984	43	9370	44	96184	41
985	43	9400	47	96284	41
988	48	9401	47	96384	41
9003	44	9413	41	96484	42
9005	44	9430	46	96584	42
9006	44	9432	46	96684	41
9013	42	9513	41	96884	42
9040	41	9515	45	96984	42
9041	43	9580	47		
9050	46	9581	47		





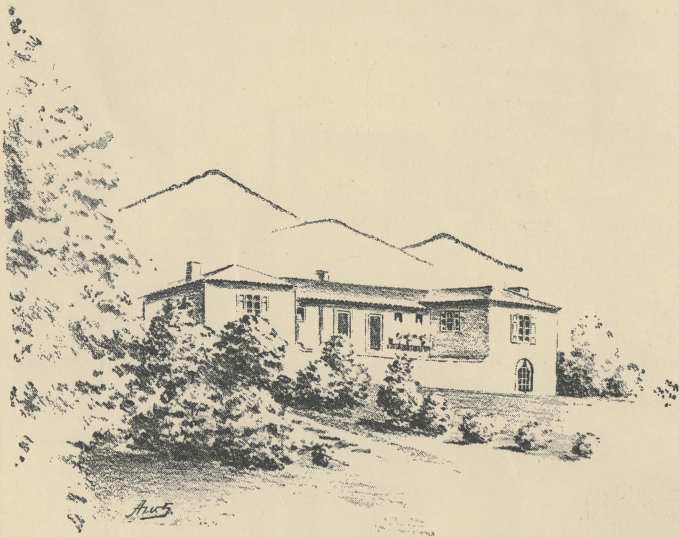
## PART I

## Corbin Hardware for Colonial Homes

The art of the metal worker of earlier times has been recalled to serve in the present-day homes of Colonial motives; homes which are remarkable in their likeness to the buildings constructed by the artisans of old. There is an admirable trend among the designers and builders of these homes toward the use of materials and ornamentation which depict, with a high degree of authenticity, the means and methods of the colonial craftsman and combine as well the mechanical perfection, comfort, and security of a progressive people.

Not least among the crafts which have placed their stamp indelibly upon the homes of our colonial ancestors was that of the village blacksmith who beat from masses of iron the sturdy hardware for doors and windows and cupboards. His tools and materials were very limited, but with patience and an instinctive creative ability he wrought into his work a simple beauty and character which is vital to a true representation of his times.

In the production of this class of hardware Corbin has maintained its position of leadership. Many of the designs shown on the pages that follow are exact reproductions of the pieces still to be found upon our historical buildings; others have been added to suit discriminating tastes.



The resemblance in appearance of the finished pieces to the old originals is striking. Toiling slowly and painstakingly, but under a handicap because of scanty equipment, the early craftsman endowed his product with individuality. Here and there a mark of the hammer or a slight irregularity of form marked the piece as a separate work. Corbin has splendidly reproduced the effect of the forge and has achieved for every article produced the mark of individuality. Skilled wielders of the hammer treat each piece separately that it may possess the unique character which will identify it with the work of the early craftsman.

That the danger of rust and discoloration of woodwork, often found objectionable in this class of hardware, might be positively eliminated, Corbin has compounded a special metal called Colonium. It contains nothing which rust can attack and has an appearance identical with that of the iron pieces which have been left us from the days of our forefathers.

## FINISHES

The pieces shown in PART I of this book are furnished in two finishes. Natural iron finish, which must be indicated in ordering by the symbol EH prefixed to the number of the article, or black iron finish which is indicated by the symbol DH. The EH finish is produced on Colonium which has the same coloring all through the metal. It shows to beautiful advantage the marks and tones of color of a hand-forged product and will remain unchanged through exposure or wear.

The DH finish is a deep, lustreless black, in simulation of the black finish often applied to iron in Colonial days. It is applied to bronze metal and is unaffected through long use.

This Corbin line of hardware offers a complete equipment of authentic pieces. Whether it be of the motives of the Early English, New England or Southern Colonial, Tudor Gothic or Spanish mission, you will find a suitable article for each application throughout the home.



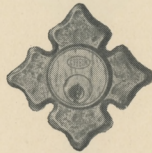
ENTRANCE DOOR HANDLES



No. 50413



No. 50484



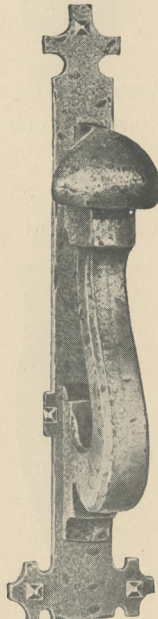
No. 51213



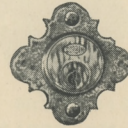
No. 51284



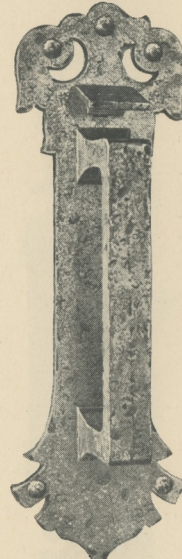
No. 52113



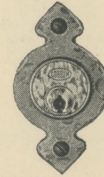
No. 52184



No. 52613



No. 52684



No. 52813



No. 52884

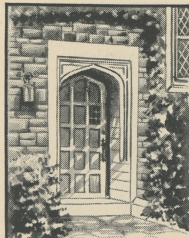
DESCRIPTION

No.	HANDLE	Projection	CYLINDER COLLAR
	Size		
50484	9 x 2 3/4 in.	2 3/8 in.	50413 2 1/2 x 2 1/2 in.
51284	10 1/2 x 2 1/2 "	2 1/4 "	51213 3 x 3 "
52184	13 1/4 x 3 1/4 "	3 "	52113 2 x 2 "
52684	12 x 4 "	2 1/2 "	52613 2 1/2 x 2 1/2 "
52884	9 1/4 x 1 1/2 "	1 1/4 "	52813 3 1/4 x 2 "

Handle numbers regularly include cylinder collars. Numbers of cylinder collars are given for convenience in ordering separately for use with knobs.

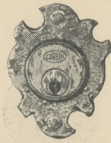
Handle 52184 and cylinder collar 52113 furnished with 7653 studs for attaching. Handle 52684 and cylinder collar 52613 with 7639 studs; others with oval-head wood screws.

Prefix letters for finish. EH colonium metal;  
DH bronze metal, black finish.

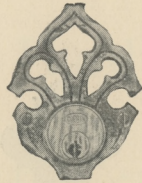




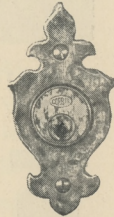
## ENTRANCE DOOR HANDLES



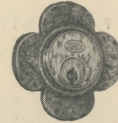
No. 52913



No. 53013



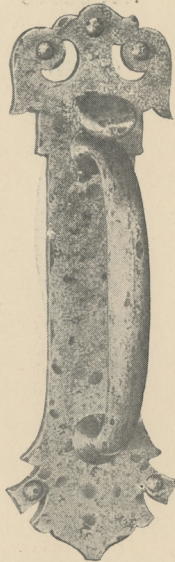
No. 53113



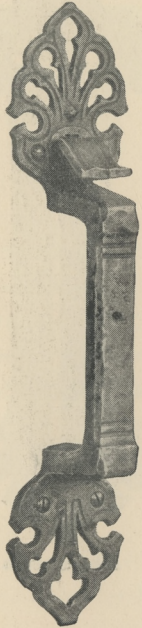
No. 53213



No. 53313



No. 52984



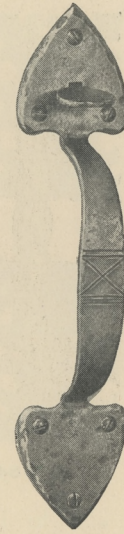
No. 53084



No. 53184



No. 53284



No. 53384

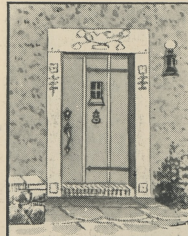
## DESCRIPTION

HANDLE			CYLINDER COLLAR	
No.	Size	Projection	No.	Size
52984	12 x 4 in.	2 $\frac{3}{4}$ in.	52913	3 x 2 $\frac{1}{4}$ in.
53084	13 $\frac{1}{8}$ x 2 $\frac{7}{8}$ "	2 $\frac{1}{8}$ "	53013	3 $\frac{5}{8}$ x 2 $\frac{3}{4}$ "
53184	11 x 2 $\frac{1}{2}$ "	3 $\frac{1}{4}$ "	53113	4 $\frac{1}{2}$ x 2 $\frac{1}{4}$ "
53284	9 x 2 $\frac{1}{8}$ "	2 "	53213	2 $\frac{1}{2}$ x 2 $\frac{1}{2}$ "
53384	11 $\frac{1}{4}$ x 2 $\frac{1}{2}$ "	1 $\frac{7}{8}$ "	53313	2 $\frac{5}{8}$ x 2 $\frac{1}{2}$ "

Handle numbers regularly include cylinder collars. Numbers of cylinder collars are given for convenience in ordering separately for use with knobs.

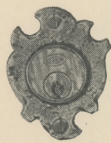
Handle 52984 and cylinder collar 52913 furnished with 7639 studs for attaching; others with oval-head wood screws.

Prefix letters for finish. EH colonium metal;  
DH bronze metal, black finish.





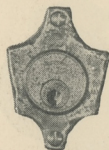
ENTRANCE DOOR HANDLES



No. 56013



No. 56113



No. 56213



No. 56413



No. 56084



No. 56184



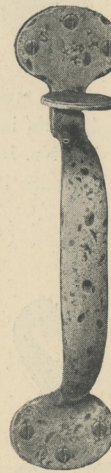
No. 56284



No. 56484

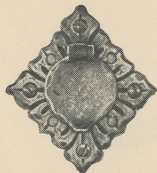


No. 58013



No. 58084

DESCRIPTION

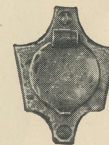


Cylinder Collar  
with Dust Cap  
**No. 56114**  
3 5/8 x 3 1/8 in.  
For use with  
Handle No. 56184

No.	HANDLE		Projection	CYLINDER COLLAR	
	Size	Size		No.	Size
<b>56084</b>	13 1/4 x 2 1/2 in.	1 7/8 in.	<b>56013</b>	3 x 2 1/4 in.	
<b>56184</b>	13 5/8 x 3 1/8 "	3 1/8 "	<b>56113</b>	3 5/8 x 3 1/8 "	
<b>56284</b>	11 1/2 x 2 1/8 "	2 3/8 "	<b>56213</b>	3 x 2 1/8 "	
<b>56484</b>	13 1/4 x 2 3/4 "	2 3/4 "	<b>56413</b>	2 1/2 x 2 1/2 "	
<b>58084</b>	10 x 2 3/8 "	1 3/8 "	<b>58013</b>	2 in. dia.	

Handle numbers regularly include cylinder collars. Numbers of cylinder collars are given for convenience in ordering separately for use with knobs.

Furnished with oval-head wood screws for attaching.



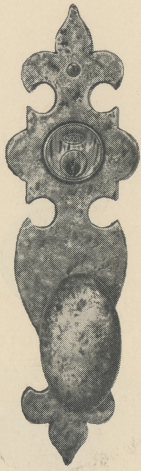
Cylinder Collar  
with Dust Cap  
**No. 56214**  
3 x 2 1/8 in.  
For use with  
Handle No. 56284

Prefix letters for finish. EH colonium metal;  
DH bronze metal, black finish.

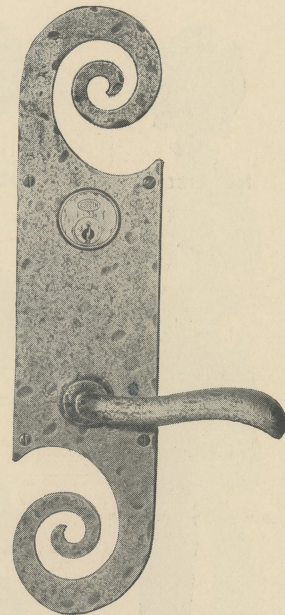




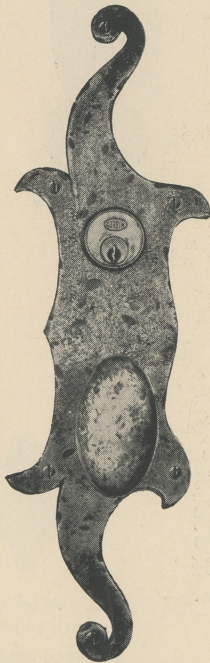
ENTRANCE DOOR ESCUTCHEONS  
FOR USE WITH KNOBS OR LEVERS



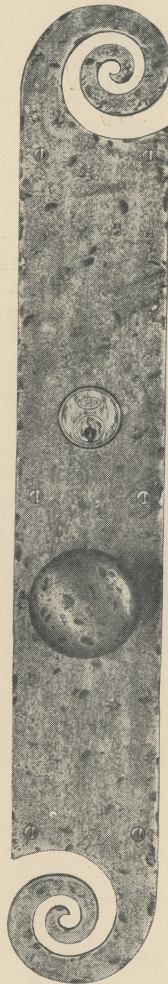
ESCUTCHEON No. 7252  
11 x 2 $\frac{3}{4}$  in.  
Shown with No. 7607 Knob  
See page 10



ESCUTCHEON No. 7291  
13 x 3 in.  
Shown with No. 7113 Lever  
See page 12

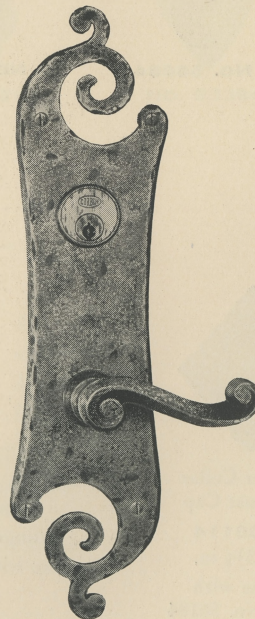


ESCUTCHEON No. 7278  
14 x 4 $\frac{1}{8}$  in.  
Shown with No. 7607 Knob  
See page 10



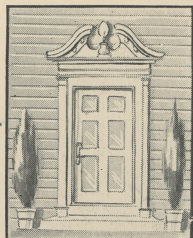
ESCUTCHEON No. 7245  
20 $\frac{3}{4}$  x 3 in.  
Shown with No. 7519 $\frac{1}{2}$  Knob  
See page 10

All furnished with oval-head wood screws.



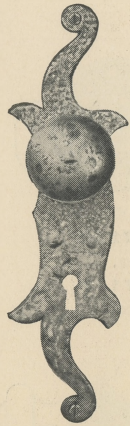
ESCUTCHEON No. 7292  
12 $\frac{7}{8}$  x 3 $\frac{1}{4}$  in.  
Shown with No. 7009 Lever  
See page 13

Prefix letters for finish. EH colonium metal;  
DH bronze metal, black finish.





### ESCUTCHEONS FOR INTERIOR DOORS



ESCUTCHEON **No. 7279**  
9 x 2 $\frac{5}{8}$  in.  
Shown with No. 7519 $\frac{1}{2}$  Knob



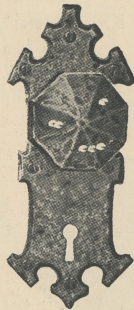
ESCUTCHEON **No. 7210**  
7 x 2 in.  
Shown with No. 7918 Knob



ESCUTCHEON **No. 7263**  
8 $\frac{1}{4}$  x 2 $\frac{1}{4}$  in.  
Shown with No. 7608 Knob

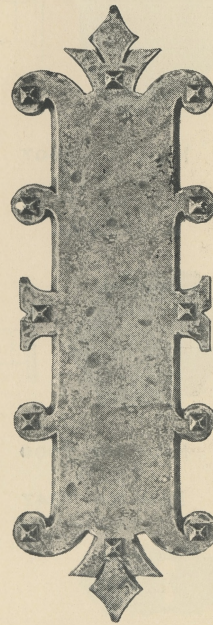
For descriptions of knobs, see page 10

### PUSH PLATE



ESCUTCHEON **No. 7264**  
6 $\frac{3}{4}$  x 2 $\frac{7}{8}$  in.  
Shown with No. 7904 Knob

Push plate No. 7600 furnished with No. 7653 studs for attaching; escutcheons with oval-head wood screws.



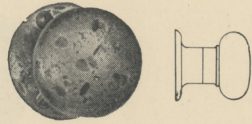
**No. 7600**  
13 x 4 $\frac{1}{4}$  in.

Prefix letters for finish. EH colonium metal;  
DH bronze metal, black finish.





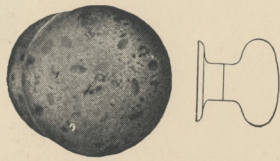
DOOR KNOBS  
AND ROSES



**KNOB No. 7919**  
1 $\frac{5}{8}$  in. dia.  
**ROSE No. 7117**  
1 $\frac{3}{4}$  in. dia.



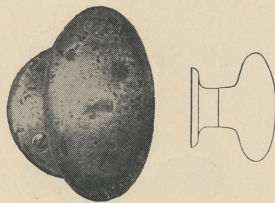
**KNOB No. 7920**  
1 $\frac{3}{4}$  in. dia.  
**ROSE No. 7117**  
1 $\frac{3}{4}$  in. dia.



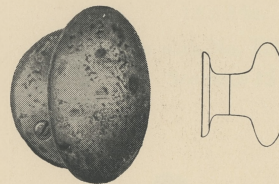
**KNOB No. 7519 $\frac{1}{2}$**   
2 $\frac{1}{4}$  in. dia.  
**ROSE No. 7118**  
2 in. dia.



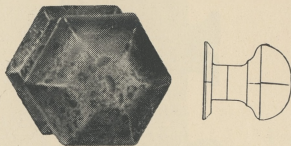
**KNOB No. 7918**  
1 $\frac{3}{4}$  in. dia.  
**ROSE No. 7117 $\frac{1}{2}$**   
1 $\frac{7}{8}$  in. dia.



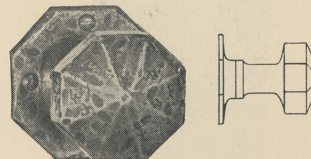
**KNOB No. 7607**  
2 $\frac{7}{8}$  x 1 $\frac{3}{4}$  in.  
**ROSE No. 7118**  
2 in. dia.



**KNOB No. 7608**  
2 $\frac{1}{2}$  x 1 $\frac{1}{2}$  in.  
**ROSE No. 7118**  
2 in. dia.



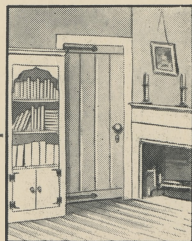
**KNOB No. 7909**  
2 x 2 in.  
**ROSE No. 7247**  
2 x 2 in.



**KNOB No. 7904**  
1 $\frac{7}{8}$  x 1 $\frac{7}{8}$  in.  
**ROSE No. 7103**  
2 $\frac{3}{8}$  x 2 $\frac{3}{8}$  in.

Furnished with oval-head wood screws for attaching rose.

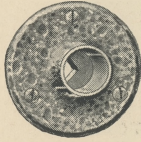
Prefix letters for finish. EH colonium metal;  
DH bronze metal, black finish.





### ROSES WITH AUXILIARY SPRINGS

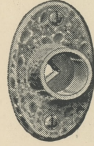
FOR USE WITH LEVER HANDLES



**No. 7242**  
2 1/16 in. dia.



Showing auxiliary  
spring and hub fas-  
tened to back of rose.



**No. 7005**  
2 1/4 x 1 1/2 in.



Auxiliary spring and  
hub fastened to back  
of rose.

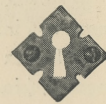
### KEY ESCUTCHEONS



**No. 7190**  
2 3/8 x 1 in.



**No. 7191**  
1 3/4 x 1 in.



**No. 7192**  
1 1/2 x 1 1/2 in.



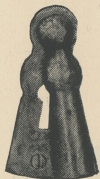
**No. 7193**  
2 x 1 3/8 in.



**No. 7200**  
1 1/8 in. dia.



**No. 7201**  
2 5/8 x 1 1/8 in.



**No. 7202**  
2 3/4 x 1 in.



**No. 7203**  
2 1/4 x 1 in.



**No. 7204**  
1 1/4 x 1 1/2 in.



**No. 7205**  
2 3/8 x 1 1/2 in.



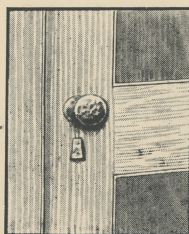
**No. 7206**  
2 x 1 1/2 in.



**No. 7207**  
1 1/8 x 2 5/8 in.

Furnished with oval-head wood screws for attaching.

Prefix letters for finish. EH colonium metal;  
DH bronze metal, black finish.





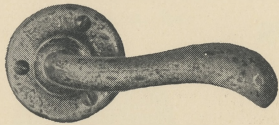
## LEVER HANDLES AND ROSES



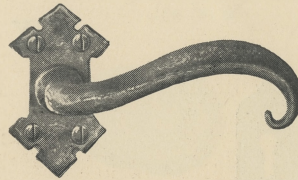
**LEVER No. 7001** $\frac{1}{2}$   
Length  $2\frac{3}{4}$  in. Projection  $1\frac{5}{8}$  in.  
Rose  $1\frac{3}{4}$  in. dia.



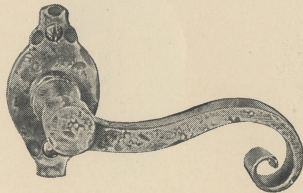
**LEVER No. 7022**  
Length  $2\frac{3}{4}$  in. Projection  $2\frac{1}{2}$  in.  
Rose 2 x 1 in.



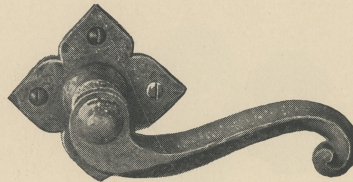
**\*LEVER No. 7112**  
Length  $3\frac{1}{2}$  in. Projection  $2\frac{1}{2}$  in.  
**\*LEVER No. 7113**  
Length  $4\frac{1}{4}$  in. Projection  $2\frac{3}{4}$  in.  
**ROSE No. 7120** $\frac{1}{2}$   
2 in. dia.



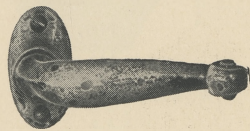
**\*LEVER No. 7114**  
Length  $3\frac{5}{8}$  in. Projection  $2\frac{1}{8}$  in.  
**ROSE No. 7107**  
 $2\frac{3}{4}$  x  $1\frac{1}{2}$  in.



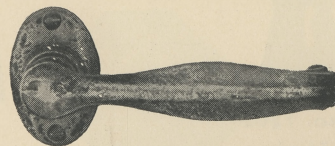
**\*LEVER No. 7110**  
Length  $3\frac{5}{8}$  in. Projection  $2\frac{1}{8}$  in.  
**ROSE No. 7106**  
 $2\frac{3}{4}$  x  $1\frac{1}{2}$  in.



**\*LEVER No. 7111**  
Length 4 in. Projection  $2\frac{1}{8}$  in.  
**ROSE No. 7105**  
 $2\frac{3}{4}$  x  $2\frac{3}{4}$  in.



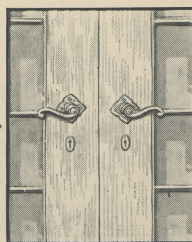
**LEVER No. 7018**  
Length  $3\frac{1}{4}$  in. Projection  $2\frac{3}{8}$  in.  
Rose 2 x 1 in.



**LEVER No. 7019**  
Length  $4\frac{1}{2}$  in. Projection 3 in.  
**ROSE No. 7005**  
 $2\frac{1}{4}$  x  $1\frac{1}{2}$  in.  
With auxiliary spring  
See page 11

Furnished with oval-head wood screws for attaching rose.

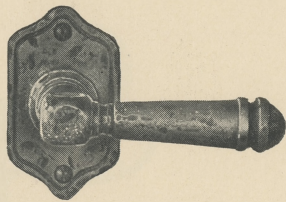
Prefix letters for finish. EH colonium metal;  
DH bronze metal, black finish.



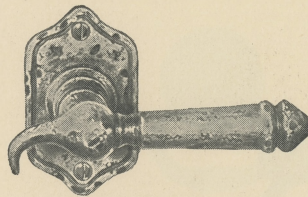
\* Not reversible. State hand. Right hand shown.



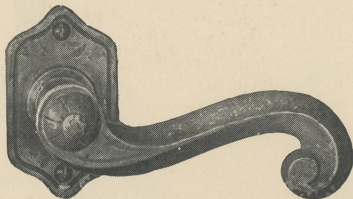
LEVER HANDLES  
AND ROSES



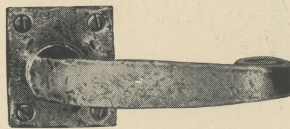
LEVER No. 7002  
Length  $3\frac{1}{4}$  in. Projection  $2\frac{1}{8}$  in.  
ROSE No. 7104  
 $3 \times 1\frac{3}{4}$  in.



\*LEVER No. 7003  
Length  $3\frac{1}{4}$  in. Projection  $2\frac{1}{8}$  in.  
ROSE No. 7104  
 $3 \times 1\frac{3}{4}$  in.



\*LEVER No. 7109  
Length  $4\frac{3}{8}$  in. Projection  $2\frac{3}{8}$  in.  
ROSE No. 7104  
 $3 \times 1\frac{3}{4}$  in.



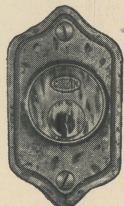
LEVER No. 7029  
Length  $3\frac{7}{8}$  in. Projection  $2\frac{1}{4}$  in.  
ROSE No. 7115  
 $2 \times 1\frac{3}{4}$  in.



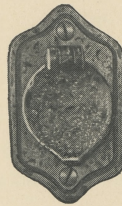
\*LEVER No. 7009  
Length 3 in. Projection  $2\frac{1}{4}$  in.  
ROSE No. 7129  
 $1\frac{3}{4}$  in. dia.

Furnished with oval-head wood screws for attaching rose.

CYLINDER COLLARS  
FOR USE WITH LEVER HANDLES



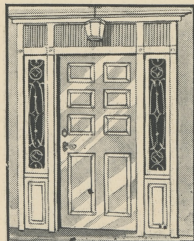
No. 50013  
 $3 \times 1\frac{3}{4}$  in.



No. 50014  
 $3 \times 1\frac{3}{4}$  in.  
With dust cap

Furnished with oval-head wood screws for attaching.

Prefix letters for finish. EH colonium metal;  
DH bronze metal, black finish.



\* Not reversible. State hand. Right hand shown.



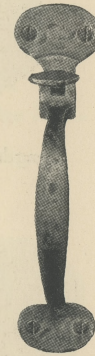
THUMB LATCHES AND  
INTERIOR DOOR HANDLES



**No. 581** with Bar  
**No. 58178** for Lock  
7 x 1 $\frac{5}{8}$  in.



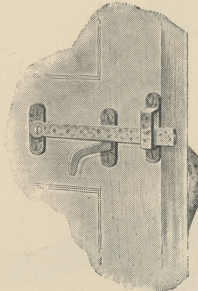
**No. 587** with Bar  
**No. 58778** for Lock  
8 $\frac{1}{4}$  x 1 $\frac{3}{4}$  in.



**No. 579** with Bar  
**No. 57978** for Lock  
7 x 1 $\frac{3}{4}$  in.



LOCKING BUTTON  
for Latch Bars  
Furnished only when  
specified in order.

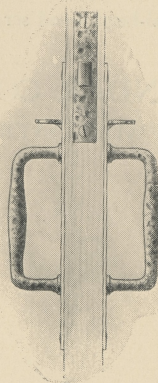


Type of latch bar furnished with  
Thumb Latches.

Note: Latch bar for reverse  
bevel doors shown on page 25.



**No. 576** with Bar  
**No. 57678** for Lock  
6 $\frac{1}{2}$  x 1 $\frac{3}{4}$  in.



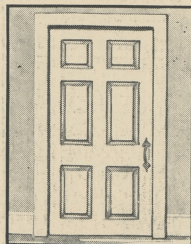
As Interior Door Handles to operate  
lock. Furnished with short-  
ened thumbpieces.



**No. 565** with Bar  
**No. 56578** for Lock  
7 $\frac{1}{2}$  x 1 $\frac{1}{2}$  in.

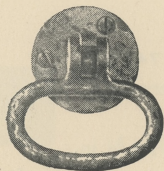
Furnished with oval-head wood screws for attaching.

Prefix letters for finish. EH colonium metal;  
DH bronze metal, black finish.

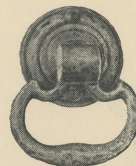




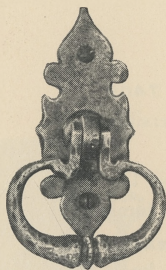
**DROP HANDLES**  
FOR USE WITH LOCKS



**No. 7266**  
Ring  $2\frac{3}{8}$  in. Rose  $1\frac{5}{8}$  in. dia.  
 $\frac{5}{16}$  in. Spindle

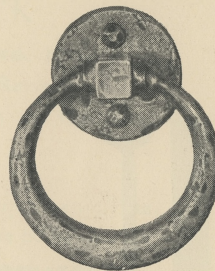


**No. 7286**  
Ring 2 in. Rose  $1\frac{5}{8}$  in. dia.  
 $\frac{5}{16}$  in. Spindle



**No. 7261**  
Ring  $2\frac{1}{2}$  in. Rose  $3\frac{3}{4} \times 1\frac{1}{2}$  in.  
 $\frac{5}{16}$  in. Spindle

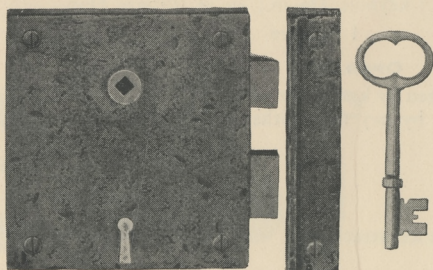
**RING DOOR PULL**



**No. 7260**  
Ring  $3\frac{1}{4}$  in. Plate 2 in. dia.

Drop handles furnished with oval-head wood screws for attaching roses.  
Ring door pull with No. 7642 studs and through bolt.

**RIM KNOB LOCKS**



**No. 7419**

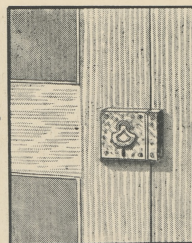
**No. 7419**  
Reversible  
Case  $5\frac{3}{8} \times 5 \times 1\frac{1}{4}$  in. Backset  $2\frac{1}{2}$  in.  
 $\frac{5}{16}$  in. Bronze Hub  
Strike  $5\frac{3}{8} \times 1\frac{1}{4} \times 1\frac{1}{4}$  in.  
Cast bronze bolts 3 tumblers 36 changes

**OPERATES**

The latch bolt is operated by knob from either side. The key projects or retracts the dead bolt from either side.

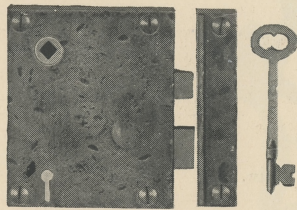
Furnished with oval-head wood screws for attaching

Prefix letters for finish. EH colonium metal;  
DH bronze metal, black finish.





## RIM KNOB LOCKS



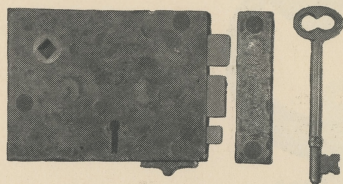
No. 7455

Case 4 x 3 $\frac{3}{8}$  x  $\frac{3}{4}$  in.Spacing 2 $\frac{1}{2}$  in.  
Cast bronze bolts

**No. 7455**  
Reversible  
Strike 4 x  $\frac{3}{4}$  x  $\frac{3}{4}$  in.  
1 tumbler  
Has bronze works

Backset 2 $\frac{5}{8}$  in. $\frac{5}{16}$  in. Bronze Hub  
12 changes**OPERATES**

The latch bolt is operated by knob from either side. The key projects or retracts the dead bolt from either side.



No. 7409

Case 3 x 4 x  $\frac{3}{4}$  in.

Cast bronze bolts

**No. 7409**  
Reversible

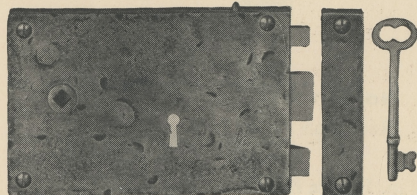
Strike 3 x  $\frac{3}{4}$  x  $\frac{3}{4}$  in.Backset, hub 3 $\frac{1}{4}$  in.; keyhole 1 $\frac{3}{4}$  in.;  $\frac{5}{16}$  in. Bronze Hub

1 tumbler

6 changes

**OPERATES**

The latch bolt is operated by knob from either side. The key projects or retracts the dead bolt from either side. The thumb bolt is projected by thumbpiece from inside.



No. 7451

Case 3 $\frac{3}{4}$  x 5 $\frac{7}{8}$  x  $\frac{3}{4}$  in.

Cast bronze bolts

**No. 7451**  
Reversible

Strike 3 $\frac{3}{4}$  x  $\frac{7}{8}$  x  $\frac{3}{4}$  in.Backset, hub 4 $\frac{3}{4}$  in.; keyhole 2 $\frac{3}{8}$  in.;  $\frac{5}{16}$  in. Bronze Hub

1 tumbler

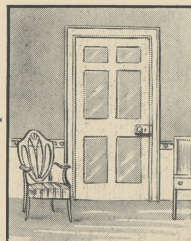
12 changes

**OPERATES**

The latch bolt is operated by knob from either side. The dead bolt is projected or retracted by key from either side. The slide inside projects the thumb bolt.

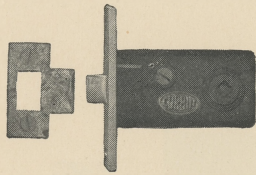
Furnished with oval-head wood screws for attaching

Prefix letters for finish. EH colonium metal;  
DH bronze metal, black finish.





## MORTISE KNOB LATCH



No. 7045

**No. 7045**

Reversible

Japanned iron case  $1\frac{5}{8} \times 3\frac{1}{4} \times \frac{9}{16}$  in. Backset  $2\frac{1}{2}$  in.  
 Furnished  $1\frac{1}{2}$ , 2,  $2\frac{1}{4}$ , or  $2\frac{3}{4}$  in. backset when so ordered; width of  
 case  $\frac{3}{8}$  in. more than backset  
 Front  $3\frac{3}{8} \times \frac{7}{8}$  in. Iron Hub  $\frac{5}{16}$  in.

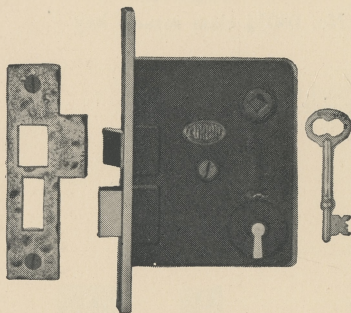
Strike, lip to center 1 in.  
 Cast bronze bolt, easy spring

**OPERATES**

By knob from either side.

Furnished with screws

## MORTISE KNOB LOCK



Nos. 7795, 7795 $\frac{7}{8}$

**No. 7795**

Reversible

Japanned iron case  $4\frac{1}{8} \times 3\frac{1}{2} \times \frac{9}{16}$  in. Spacing  $2\frac{5}{8}$  in.  
 Backset  $2\frac{3}{4}$  in. Front  $6\frac{1}{8} \times 1$  in. Bronze Hub  $\frac{5}{16}$  in.

Strike, lip to center 1 in.  
 Cast bronze bolts, easy spring

**OPERATES**

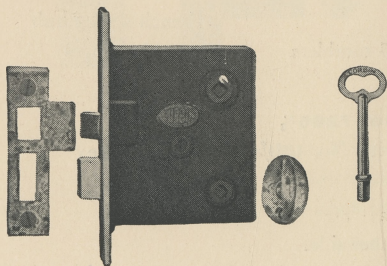
The latch bolt is operated by knob from either side. The key operates the dead bolt from either side.

**No. 7795 $\frac{7}{8}$**

Same as No. 7795 but with No. 195 class master key

Furnished with screws

## MORTISE COMMUNICATING DOOR LOCK



No. 7059

**No. 7059**

Reversible

Japanned iron case  $3\frac{5}{8} \times 3\frac{1}{4} \times \frac{9}{16}$  in. Spacing  $2\frac{3}{8}$  in.  
 Backset  $2\frac{5}{8}$  in. Furnished 2 in. backset when so ordered; width of case  $\frac{1}{16}$  in. more  
 than backset

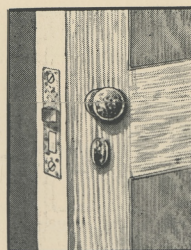
Front  $5\frac{1}{2} \times \frac{15}{16}$  in. Bronze Hubs  $\frac{3}{16}$  and  $\frac{5}{16}$  in.  
 Cast bronze bolts, easy spring Thumb knob No. 7145

**OPERATES**

The latch bolt is operated by knob from either side. The thumb-knob inside and the key outside, operate the dead bolt.

Furnished with screws

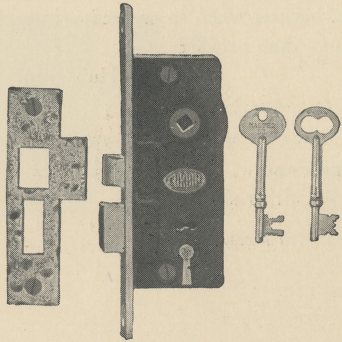
Prefix letters for finish. EH colonium metal;  
 DH bronze metal, black finish.





## MORTISE KNOB LOCKS

FOR USE WITH LEVER HANDLES

Nos. 7065, 7065 $\frac{7}{8}$ **No. 7065**

Reversible

Japanned iron case  $4\frac{3}{4} \times 2\frac{3}{8} \times \frac{5}{8}$  in.Backset  $1\frac{1}{2}$  in.Spacing  $2\frac{5}{8}$  in.Furnished  $1\frac{1}{4}$ ,  $1\frac{3}{4}$ , or 2 in. backset when so ordered; width of case  $\frac{7}{8}$  in. more than backsetFront  $6\frac{3}{4} \times 1\frac{1}{16}$  in.Bronze Hub  $\frac{5}{16}$  in.Strike, lip to center  $1\frac{1}{8}$  in.

Easy spring latch bolt

French spring hub

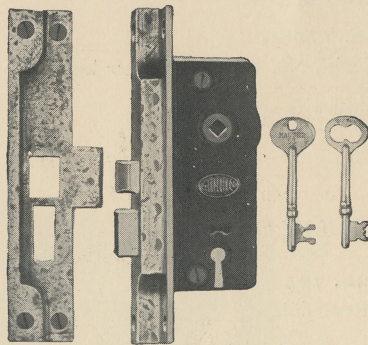
Cast bronze bolts

3 tumblers

640 changes

**No. 7065 $\frac{7}{8}$** Same as No. 7065 but with No. 080 $\frac{7}{8}$  class master key**OPERATES**

The latch bolt is operated by knob or lever from either side. The key operates the dead bolt from either side.

Nos. 7265, 7265 $\frac{7}{8}$ **No. 7265**

\*Not Reversible

Japanned iron case  $4\frac{3}{4} \times 2\frac{3}{8} \times \frac{5}{8}$  in.Backset  $1\frac{1}{2}$  in. long sideSpacing  $2\frac{5}{8}$  in.Furnished  $1\frac{3}{4}$ , 2, or  $2\frac{1}{4}$  in. backset when so ordered; width of case  $\frac{7}{8}$  in. more than backsetFront  $7 \times 1\frac{1}{4}$  in.,  $\frac{1}{2}$  in. rabbet, beveled  $\frac{1}{8}$  in 2 in.Strike, lip to center  $1\frac{1}{4}$  in.Bronze Hub  $\frac{5}{16}$  in.

Easy spring latch bolt

French spring hub

Cast bronze bolts

3 tumblers

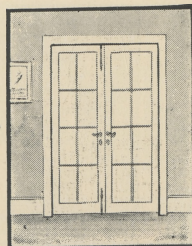
640 changes

**No. 7265 $\frac{7}{8}$** Same as No. 7265 but with No. 080 $\frac{7}{8}$  class master key**OPERATES**

The latch bolt is operated by knob or lever from either side. The key operates the dead bolt from either side.

Furnished with screws

Prefix letters for finish. EH colonium metal;  
DH bronze metal, black finish.

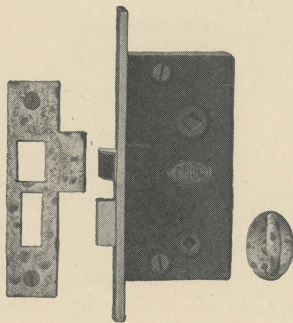


\*State hand. Right hand shown



## MORTISE KNOB LOCKS

FOR USE WITH LEVER HANDLES



**No. 7074**

**No. 7074**

Reversible

Japanned iron case  $4\frac{1}{4} \times 2\frac{1}{4} \times \frac{5}{8}$  in.

Backset  $1\frac{1}{2}$  in.

Spacing  $2\frac{5}{8}$  in.

Furnished  $1\frac{1}{4}$ ,  $1\frac{3}{4}$ , or 2 in. backset when so ordered; width of case  $\frac{3}{4}$  in. more than backset

Front  $6\frac{1}{8} \times 1\frac{1}{16}$  in.

Bronze Hubs  $\frac{3}{16}$  and  $\frac{5}{16}$  in.

Easy spring latch bolt

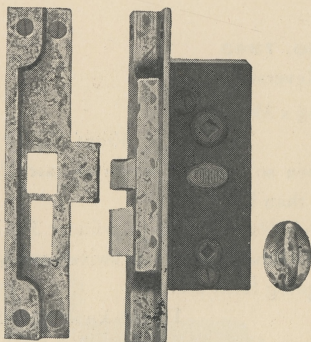
Strike, lip to center  $1\frac{1}{2}$  in.

Cast bronze bolts

Thumb knob No. 7145

**OPERATES**

The latch bolt is operated by knob or lever from either side. The thumb knob inside, operates the dead bolt.



**No. 7074 $\frac{1}{2}$**

**No. 7074 $\frac{1}{2}$**

\*Not reversible

Japanned iron case  $4\frac{1}{4} \times 2\frac{1}{4} \times \frac{5}{8}$  in.

Backset  $1\frac{1}{2}$  in. long side

Spacing  $2\frac{5}{8}$  in.

Furnished  $1\frac{1}{4}$ ,  $1\frac{3}{4}$ , or 2 in. backset when so ordered; width of case  $\frac{3}{4}$  in. more than backset

Front  $6\frac{1}{2} \times 1\frac{3}{16}$  in.,  $\frac{1}{2}$  in. rabbet, beveled  $\frac{1}{8}$  in 2 in. Bronze Hubs  $\frac{3}{16}$  and  $\frac{5}{16}$  in.

Easy spring latch bolt

Strike, lip to center  $1\frac{1}{2}$  in.

Cast bronze bolts

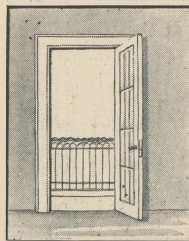
Thumb knob No. 7145

**OPERATES**

The latch bolt is operated by knob or lever from either side. The thumb knob inside, operates the dead bolt.

Furnished with screws

Prefix letters for finish. EH colonium metal;  
DH bronze metal, black finish.



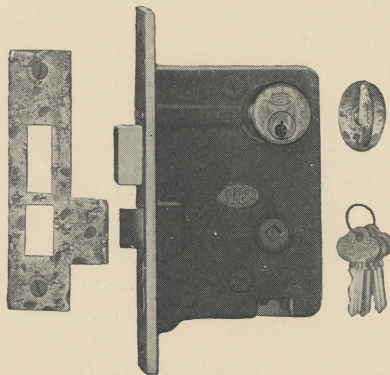
\* State hand. Right hand shown



## MORTISE FRONT DOOR LOCKS

With Ball Bearing Cylinder

FOR HANDLE OUTSIDE, KNOB INSIDE



No. 7349 $\frac{1}{2}$

**No. 7349 $\frac{1}{2}$**

Reversible

Case 5 $\frac{1}{4}$  x 3 $\frac{7}{8}$  x  $\frac{3}{4}$  in.

Backset 2 $\frac{3}{4}$  in.

Front 7 $\frac{5}{8}$  x 1 $\frac{1}{4}$  in.

Furnished 2 or 3 in. backset when so ordered; width of case 1 $\frac{1}{8}$  in. more than backset

Spacing, knob to cylinder 2 $\frac{1}{2}$  in.

Hub  $\frac{5}{16}$  in.

Strike, lip to center 1 $\frac{1}{2}$  in.

Cast bronze bolts

Thumb knob No. 7145

One cylinder No. 253

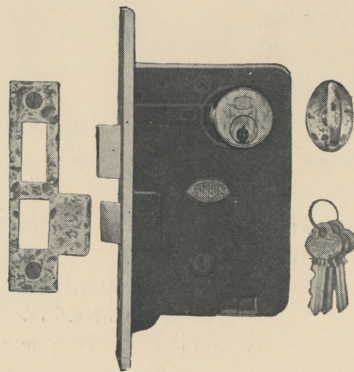
3 keys, Class 27

Unlimited changes

### OPERATES

The latch bolt is operated by the thumbpiece outside and by knob inside. Both latch and dead bolts are operated by key from the outside at all times. From the inside, the dead bolt is operated by the thumb knob. The thumbpiece of the handle can be made inoperative by the stop in face of lock.

FOR KNOBS BOTH SIDES



No. 7343

**No. 7343**

Reversible

Case 5 $\frac{5}{8}$  x 3 $\frac{5}{8}$  x  $\frac{3}{4}$  in.

Backset 2 $\frac{1}{2}$  in.

Front 7 $\frac{7}{8}$  x 1 $\frac{1}{16}$  in.

Furnished 2 $\frac{3}{4}$  in. backset when so ordered; width of case 1 $\frac{1}{8}$  in. more than backset

Spacing, knob to thumb knob 2 $\frac{3}{8}$  in.; knob to cylinder 3 $\frac{7}{8}$  in.

Strike, lip to center 1 $\frac{1}{4}$  in. Hubs  $\frac{3}{8}$  x  $\frac{5}{16}$  in. swivel and  $\frac{3}{16}$  in.

Easy spring latch bolt

Cast bronze bolts

Thumb knob No. 7145

One cylinder No. 253

3 keys, Class 27

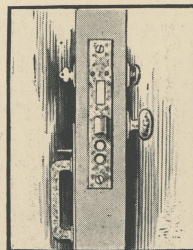
Unlimited changes

### OPERATES

The latch bolt is operated by knob from either side. The outside knob may be made inoperative by the stop in face of lock. The key operates both latch and dead bolts from the outside at all times. From the inside, the dead bolt is operated by thumb knob.

Furnished with screws

Prefix letters for finish. EH colonium metal;  
DH bronze metal, black finish.

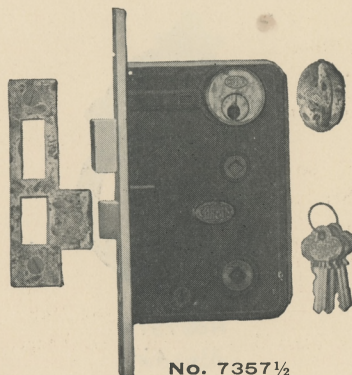




## MORTISE FRONT DOOR LOCK

With Ball Bearing Cylinder

FOR HANDLE BOTH SIDES



No. 7357 1/2

**No. 7357 1/2**

Reversible

Case 5 1/4 x 3 3/8 x 1 1/8 in.

Backset 2 1/2 in.

Front 7 5/8 x 1 1/8 in.

Strike, lip to center 1 1/2 in.

Easy spring latch bolt

Cast bronze bolts

Thumb knob No. 7145

One cylinder No. 253. 3 keys, Class 27. Unlimited changes.

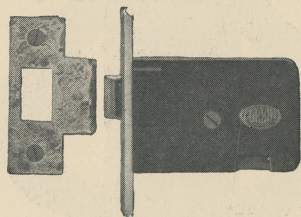
### OPERATES

The latch bolt is operated by thumbpiece from either side. The outside thumbpiece may be made inoperative by stop in face of lock. The key retracts both latch and dead bolts from the outside at all times. From the inside the dead bolt is operated by thumbknob.

The latch bolt may be held back by retracting it with the key and impressing the upper stop while in this position.

## MORTISE LATCH

FOR THUMB LATCH BOTH SIDES



No. 7177

**No. 7177**

Reversible

Case 2 1/4 x 3 1/2 x 5/8 in.

Backset 2 5/8 in.

Front 4 1/4 x 1 in.

Furnished 3 in. backset, when so ordered; width of case 7/8 in. more than backset

Strike, lip to center 1 1/4 in.

Cast bronze bolt

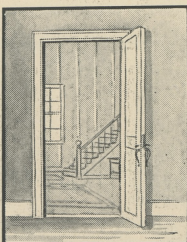
Easy spring

### OPERATES

By thumb latch from either side.

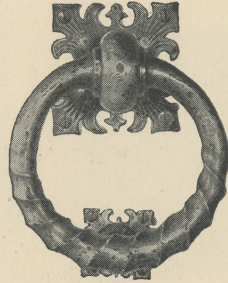
Furnished with screws

Prefix letters for finish. EH colonium metal;  
DH bronze metal, black finish.

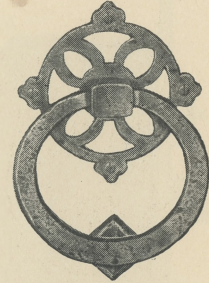




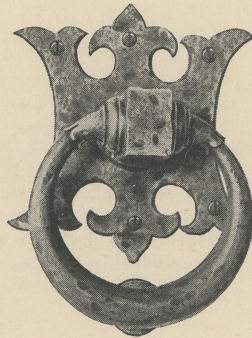
DOOR KNOCKERS



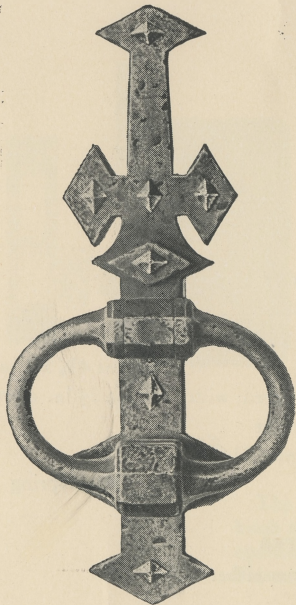
No. 7917 1/2  
5 1/2 x 4 1/2 in.



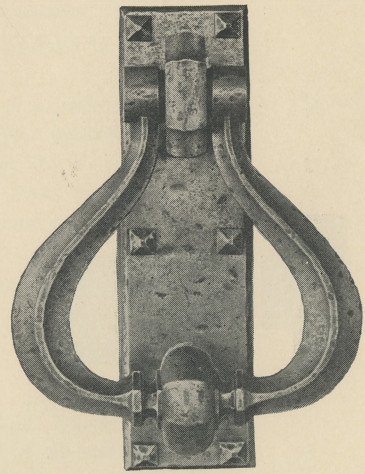
No. 7373  
5 7/8 x 4 in.



No. 7375  
6 5/8 x 5 1/8 in.



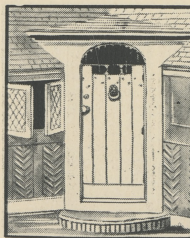
No. 7377  
13 1/2 x 6 1/8 in.



No. 7379  
9 3/4 x 7 in.  
Projection 2 3/4 in.

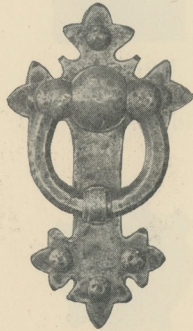
Knocker No. 7377 furnished with No. 7647 studs; No. 7379 with No. 7655 studs; others with oval-head wood screws. Through bolt also furnished for attaching from inside.

Prefix letters for finish. EH colonium metal;  
DH bronze metal, black finish.

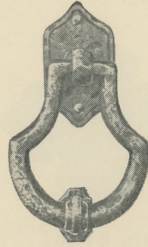




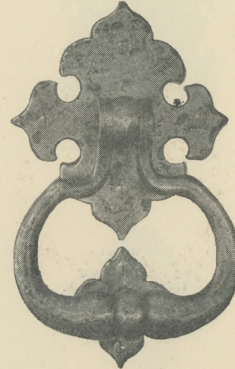
DOOR KNOCKERS



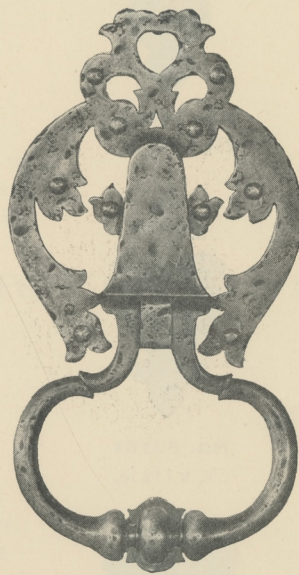
No. 7374  
7 1/8 x 4 1/8 in.



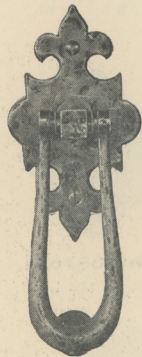
No. 7372  
5 1/8 x 2 7/8 in.



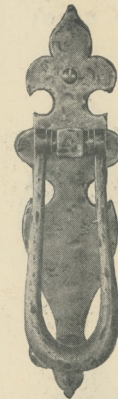
No. 7380  
7 3/4 x 4 1/2 in.



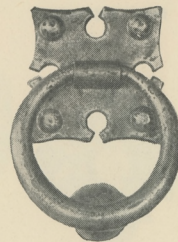
No. 7376  
11 5/8 x 6 1/4 in.



No. 7912  
7 1/4 x 2 7/8 in.



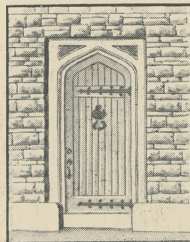
No. 7913  
8 1/4 x 2 5/8 in.



No. 7378  
4 3/4 x 3 in.

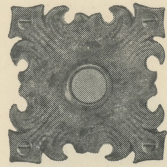
Knockers No. 7374 and No. 7378 furnished with No. 7640 studs;  
No. 7376 with No. 7639 studs; others with oval-head wood screws.  
Through bolt also furnished for attaching from inside.

Prefix letters for finish. EH colonium metal;  
DH bronze metal, black finish.

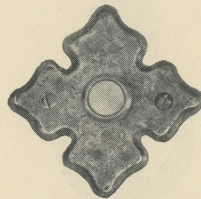




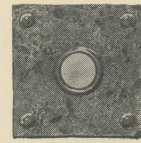
ELECTRIC PUSH BUTTONS



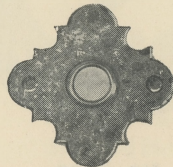
**No. 50461**  
2½ x 2½ in.



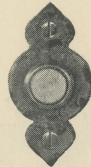
**No. 51261**  
3 x 3 in.



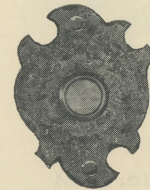
**No. 52161**  
2 x 2 in.  
With studs No. 7653



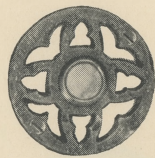
**No. 52661**  
2½ x 2½ in.  
With studs No. 7639



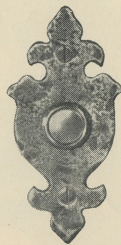
**No. 52861**  
2½ x 1¼ in.



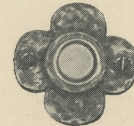
**No. 52961**  
3 x 2¼ in.  
With studs No. 7639



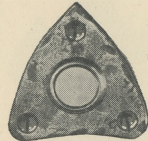
**No. 53061**  
2¼ in. dia.



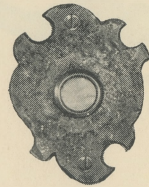
**No. 53161**  
3¾ x 1⅞ in.



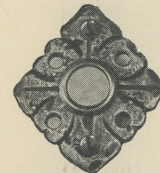
**No. 53261**  
1⅞ x 1⅞ in.



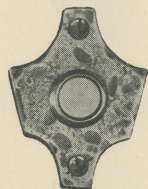
**No. 53361**  
2⅝ x 2½ in.



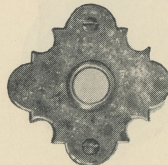
**No. 56061**  
3 x 2¼ in.



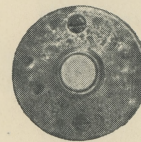
**No. 56161**  
3⅝ x 3⅞ in.



**No. 56261**  
3 x 2⅞ in.



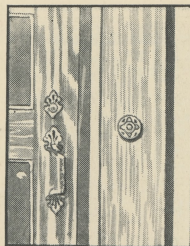
**No. 56461**  
2½ x 2½ in.



**No. 58061**  
2 in. dia.

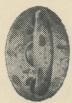
Furnished with oval-head wood screws except as noted

Prefix letters for finish. EH colonium metal;  
DH bronze metal, black finish.





THUMB KNOBS



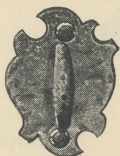
**No. 7145**  
Plate  $1\frac{5}{8}$  x  $1\frac{1}{8}$  in.  
 $\frac{3}{16}$  in. Spindle



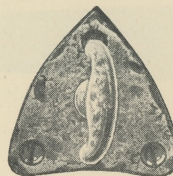
**No. 7048**  
Plate  $1\frac{7}{8}$  x  $1\frac{7}{8}$  in.  
 $\frac{3}{16}$  in. Spindle



**No. 7049**  
Plate  $2\frac{3}{8}$  x 1 in.  
 $\frac{3}{16}$  in. Spindle



**No. 7289**  
Plate  $2\frac{3}{8}$  x  $1\frac{3}{4}$  in.  
 $\frac{3}{16}$  in. Spindle  
With studs 7639

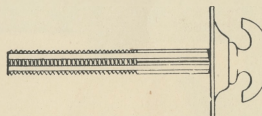


**No. 53349**  
Plate  $2\frac{3}{8}$  x  $2\frac{3}{8}$  in.  
 $\frac{3}{16}$  in. Spindle

SAFETY CLOSET SPINDLE

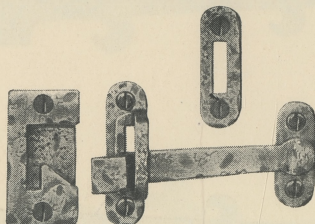


**No. 7034 1/4**  
Rose  $1\frac{3}{4}$  in. dia.  
 $\frac{5}{16}$  in. Spindle  
Threaded

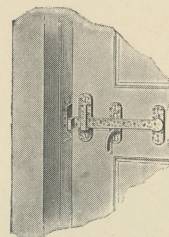


Side View  
Used as inside trim on closet doors instead of knob and escutcheon

REVERSE BEVEL LATCH BAR AND STRIKE



**No. 7501**  
Bar  $3\frac{5}{8}$  in. long. Offset  $\frac{7}{16}$  in.  
Strike  $2\frac{1}{4}$  x  $1\frac{1}{8}$  in.

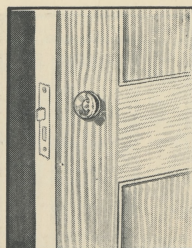


**No. 7501 Applied**

Not reversible. State hand. Left hand reverse bevel shown.

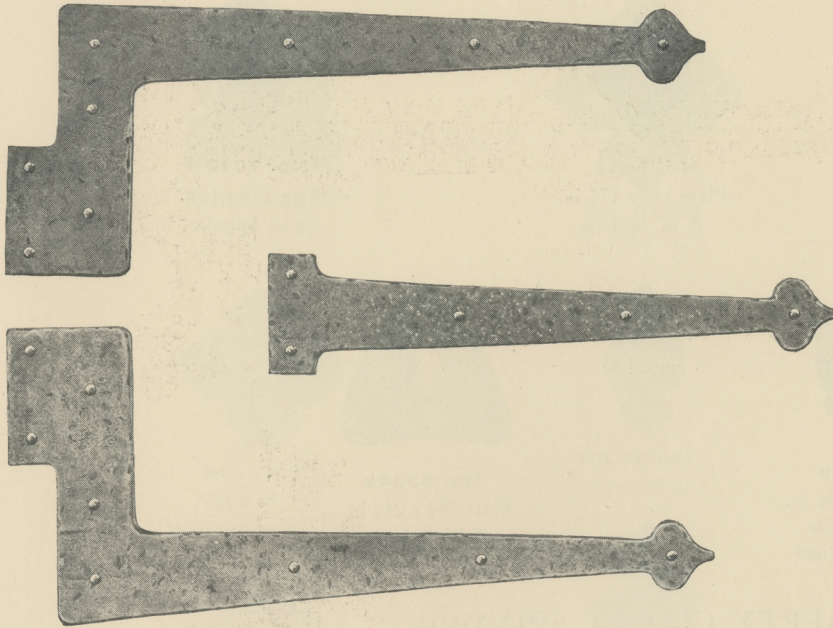
All with oval-head wood screws except thumb knob No. 7289

Prefix letters for finish. EH colonium metal;  
DH bronze metal, black finish.





HINGE PLATES

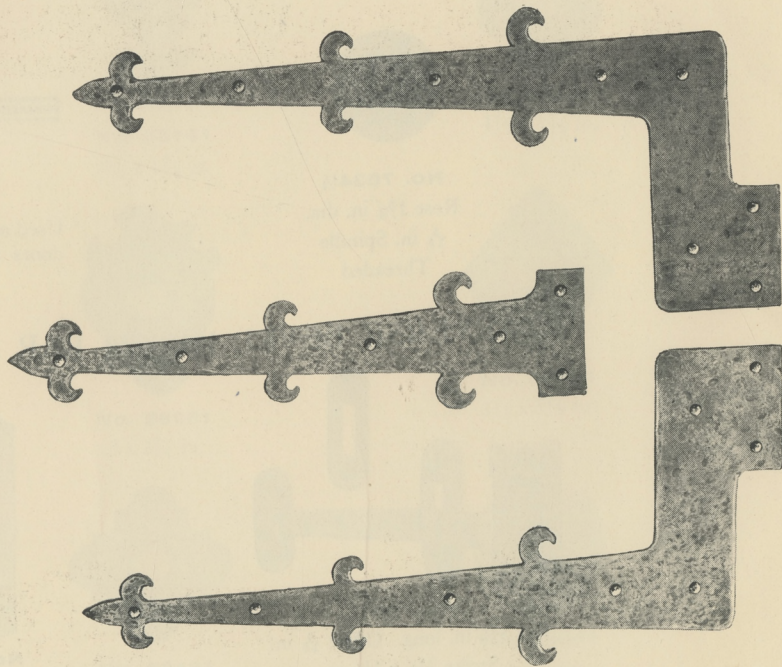


SET  
**No. 7705**  
 CORNERS  
 Length 22 in.  
 Width, over all 9 in.  
 CENTER  
 Length 18 in.  
 Width 4 in.

\*Butt stocks 4 in.  
 Furnished with studs No. 7640

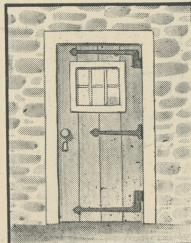
SET  
**No. 7704**  
 CORNERS  
 Length 22 in.  
 Width, over all 10 in.  
 CENTER  
 Length 18 in.  
 Width 4 in.

\*Butt stocks 4 in.  
 Furnished with studs No. 7640



\*These hinge plates are made regularly with 4 in. butt stocks.  
 Furnished for other size butts only when so specified in order.

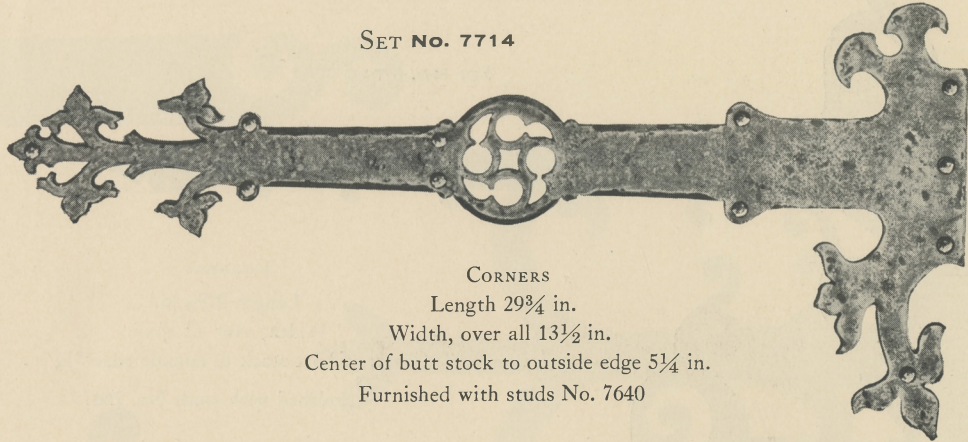
Prefix letters for finish. EH colonium metal;  
 DH bronze metal, black finish.



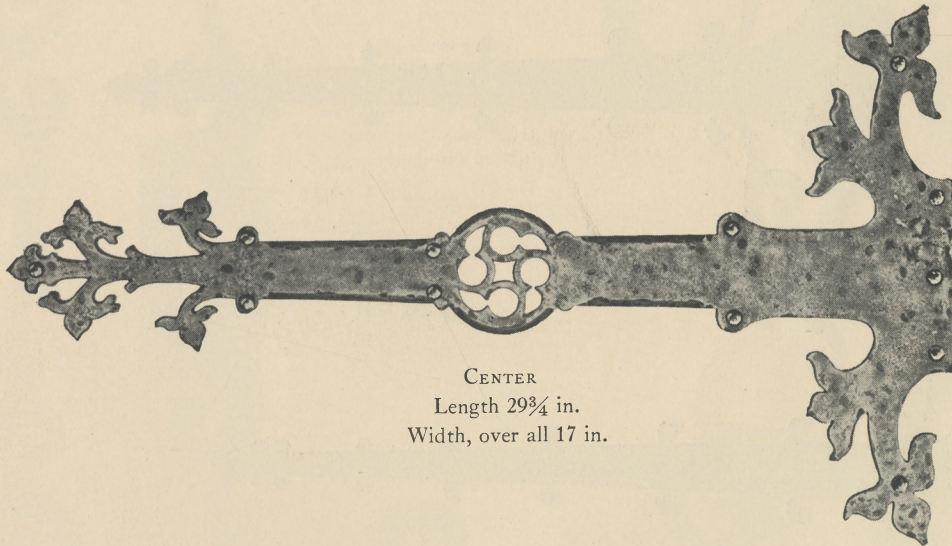


# HINGE PLATES

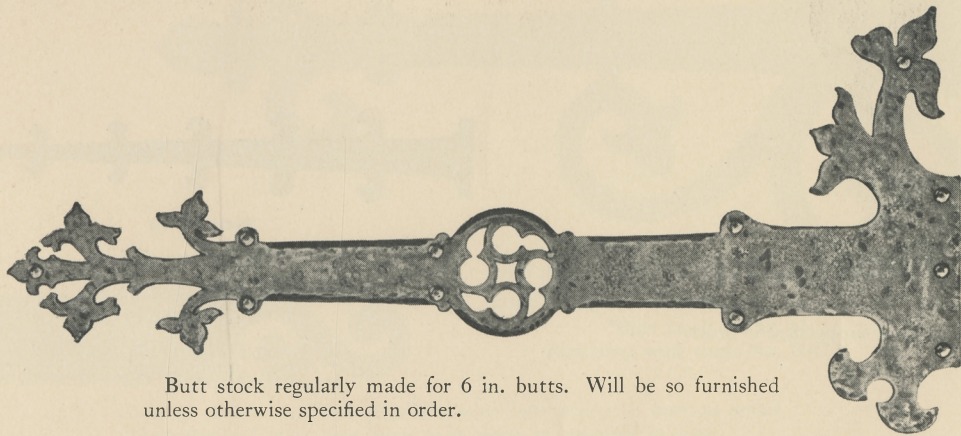
SET NO. 7714



CORNERS  
Length  $29\frac{3}{4}$  in.  
Width, over all  $13\frac{1}{2}$  in.  
Center of butt stock to outside edge  $5\frac{1}{4}$  in.  
Furnished with studs No. 7640

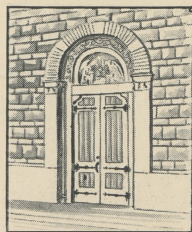


CENTER  
Length  $29\frac{3}{4}$  in.  
Width, over all 17 in.



Butt stock regularly made for 6 in. butts. Will be so furnished unless otherwise specified in order.

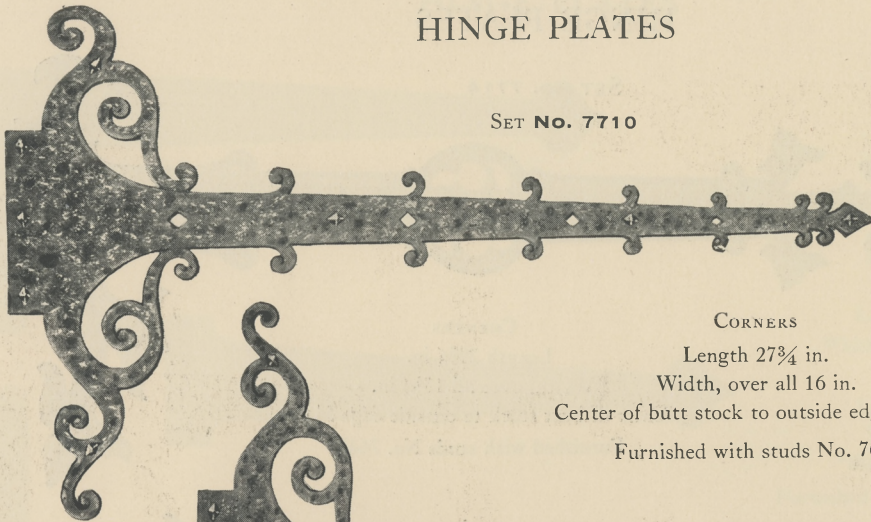
Prefix letters for finish. EH colonium metal;  
DH bronze metal, black finish.



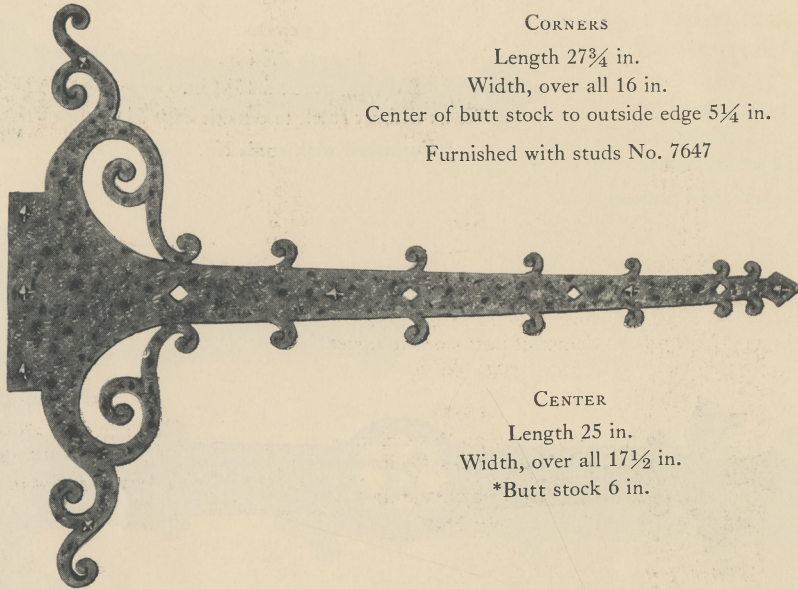


HINGE PLATES

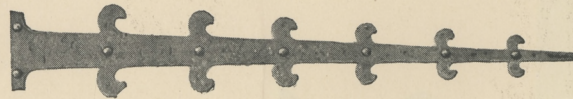
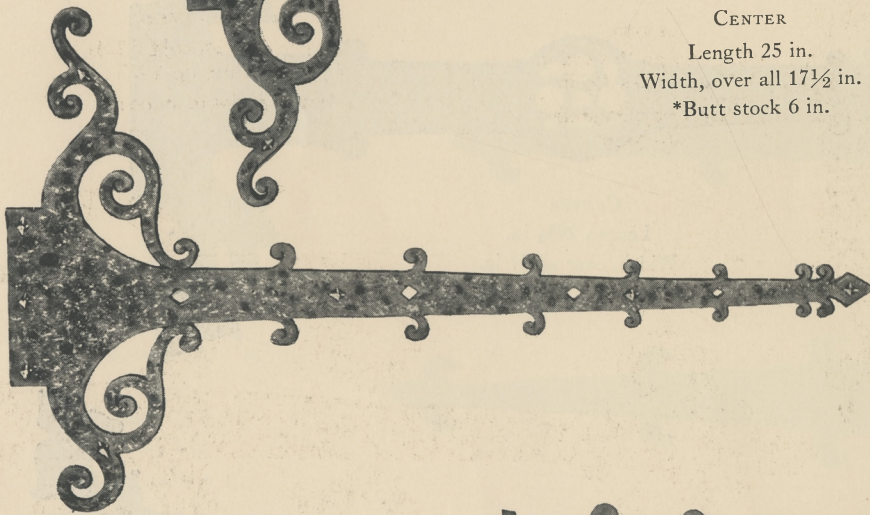
SET NO. 7710



CORNERS  
 Length 27¾ in.  
 Width, over all 16 in.  
 Center of butt stock to outside edge 5¼ in.  
 Furnished with studs No. 7647



CENTER  
 Length 25 in.  
 Width, over all 17½ in.  
 \*Butt stock 6 in.

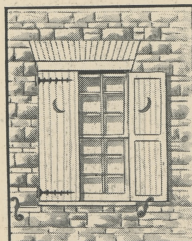


No. 7748

Width, over all 3 in.  
 Lengths 14 or 18 in.  
 \*Butt stock 2½ in.  
 Furnished with studs No. 7639  
 In ordering specify length desired.

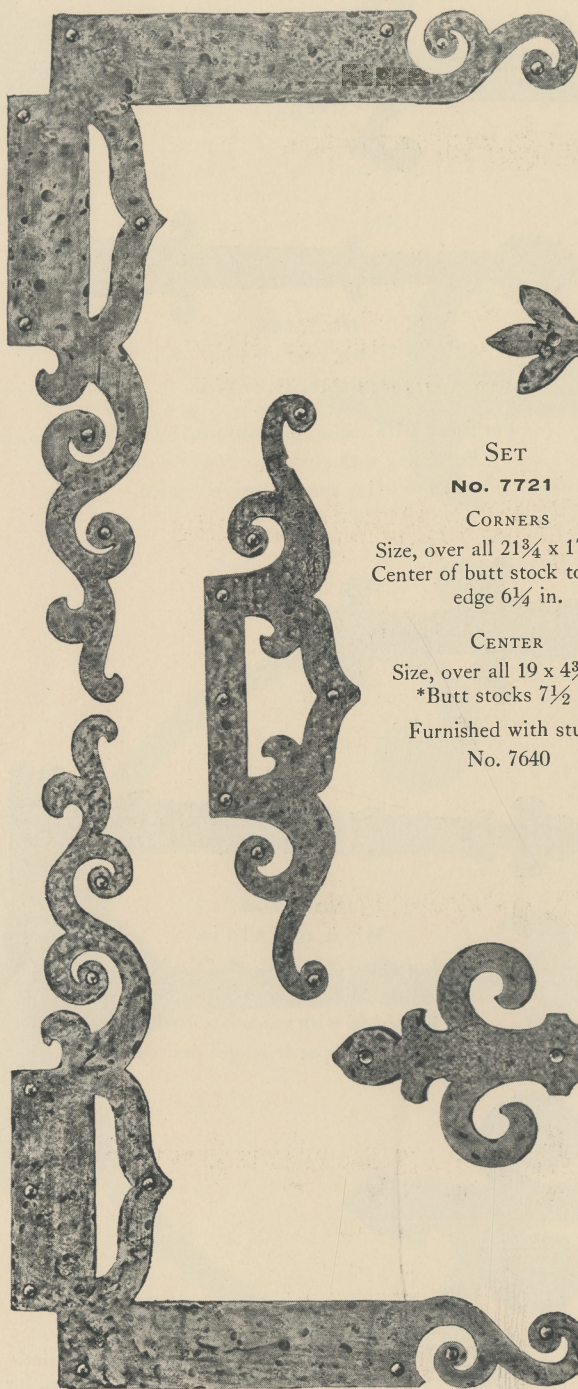
\*These hinge plates are made regularly with butt stocks of size noted. Furnished for other size butts only when so specified in order.

Prefix letters for finish. EH colonium metal;  
 DH bronze metal, black finish.





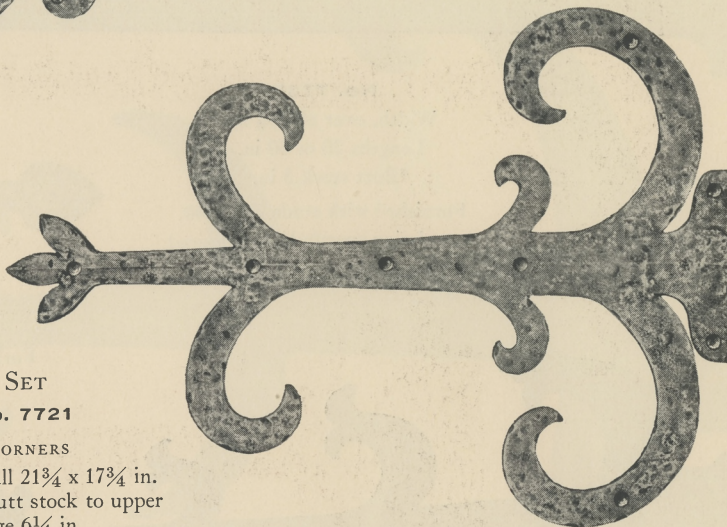
# HINGE PLATES



SET  
No. 7721

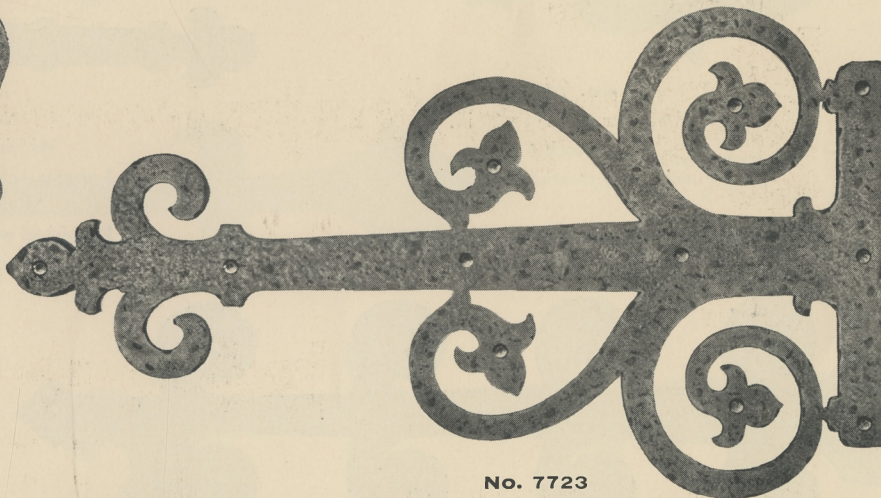
CORNERS  
Size, over all  $21\frac{3}{4}$  x  $17\frac{3}{4}$  in.  
Center of butt stock to upper  
edge  $6\frac{1}{4}$  in.

CENTER  
Size, over all  $19$  x  $4\frac{3}{4}$  in.  
\*Butt stocks  $7\frac{1}{2}$  in.  
Furnished with studs  
No. 7640



No. 7755

Size, over all  $16\frac{1}{4}$  x  $22\frac{3}{4}$  in.  
\*Butt stock 6 in.  
Furnished with studs No. 7640

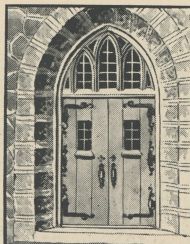


No. 7723

Size, over all  $15\frac{3}{8}$  x  $27\frac{1}{2}$  in.  
\*Butt stock 12 in.  
Furnished with studs No. 7641

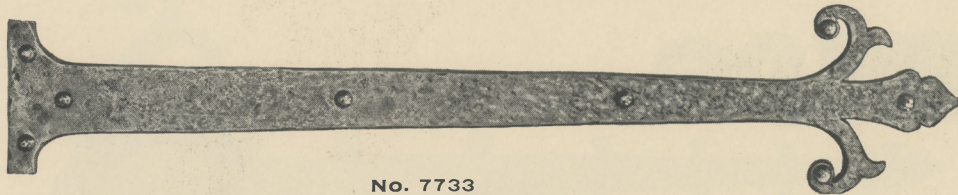
\*These hinge plates are made regularly with butt stocks of sizes as noted.  
Furnished for other size butts only when so specified in order.

Prefix letters for finish. EH colonium metal;  
DH bronze metal, black finish.





## HINGE PLATES

**No. 7733**Width, over all  $5\frac{7}{8}$  in.

Lengths 20 or 30 in.

\*Butt stock 5 in.

Furnished with studs No. 7640.

In ordering specify length desired.

**No. 7756**

Width, over all 4 in.

Lengths 18, 24, or 27 in.

\*Butt stock 4 in.

Furnished with studs No. 7640 for 18 and 24 in.

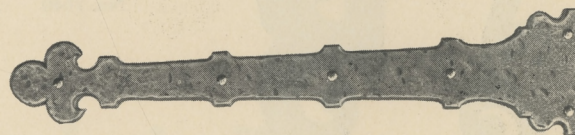
Furnished with studs No. 7641 for 27 in.

In ordering specify length desired.

**No. 7753**Size, over all  $14\frac{1}{8}$  x 29 in.

\*Butt stock 6 in.

Furnished with studs No. 7640

**No. 7700**

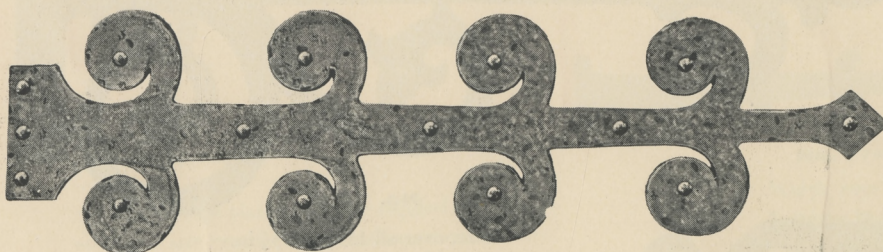
Width, over all 4 in.

Lengths  $17\frac{1}{8}$ ,  $24\frac{3}{4}$ , or  $29\frac{1}{2}$  in.

\*Butt stock 4 in.

Furnished with studs No. 7640

In ordering, specify length desired

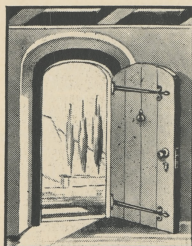
**No. 7732**Size, over all  $7\frac{5}{8}$  in.

\*Butt stock 4 in.

Furnished with studs No. 7641

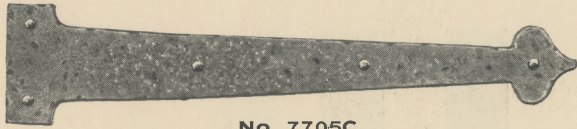
\* These hinge plates are made regularly with butt stock of size noted. Furnished for other size butts only when so specified in order.

Prefix letters for finish. EH colonium metal;  
DH bronze metal, black finish.



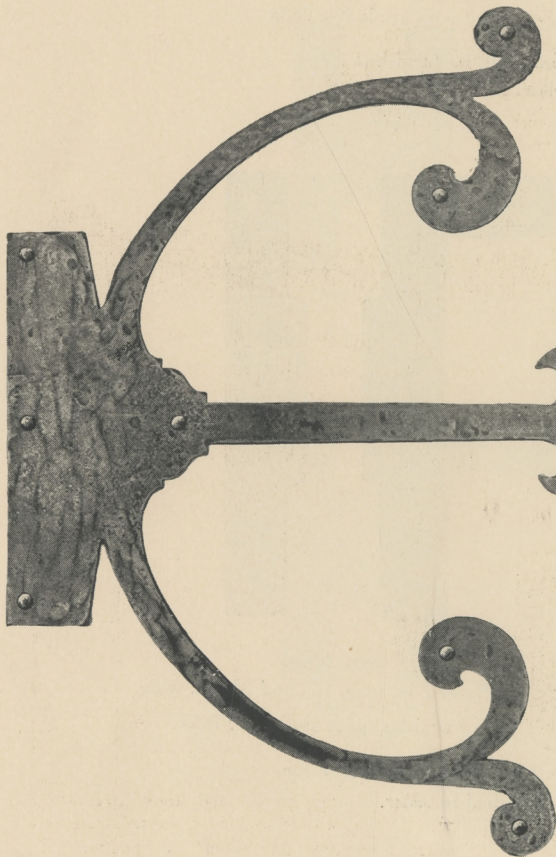
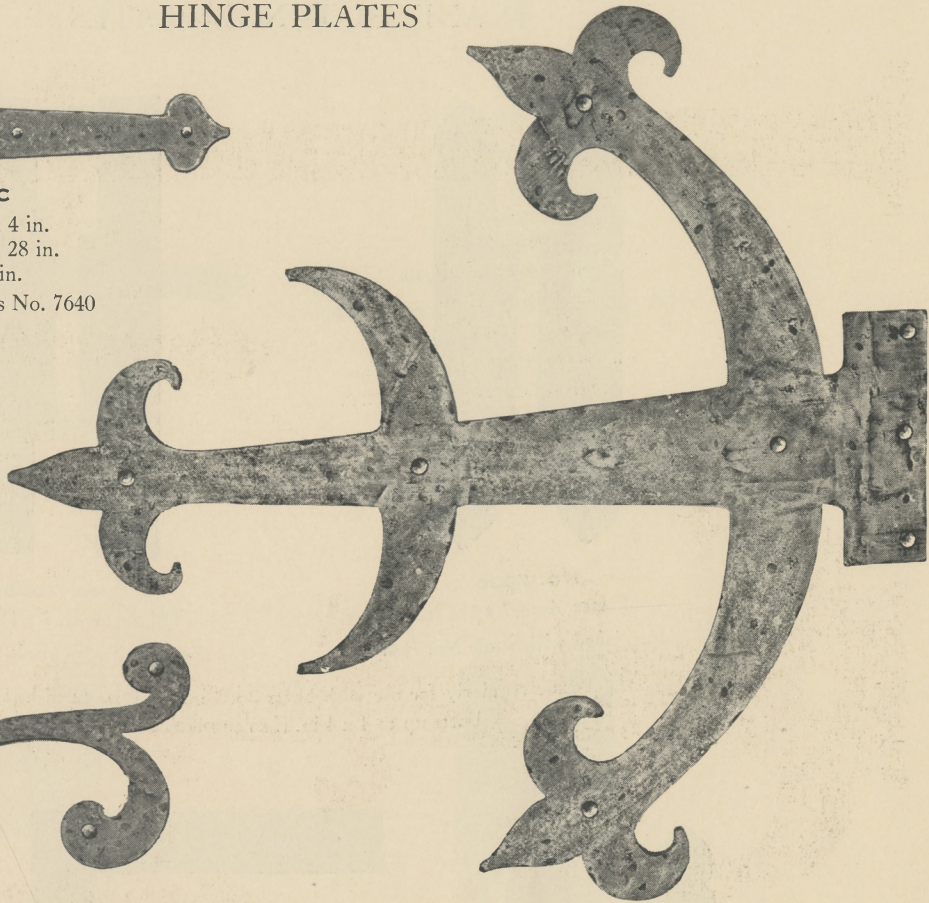


### HINGE PLATES

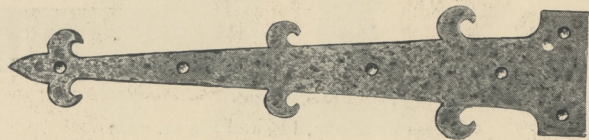


**No. 7705C**  
Width, over all 4 in.  
Lengths 11, 18, or 28 in.  
\*Butt stock 4 in.  
Furnished with studs No. 7640

**No. 7724**  
Size, over all 27½ x 28⅝ in.  
\*Butt stock 8 in.  
Furnished with studs No. 7641



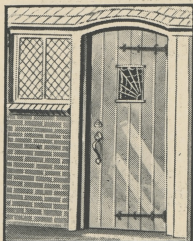
**No. 7762**  
Size, over all 24¾ x 26 in.  
\*Butt stock 11¾ in.  
Furnished with studs No. 7640



**No. 7704C**  
Size, over all 4½ x 18 in.  
\*Butt stock 4 in.  
Furnished with studs No. 7640

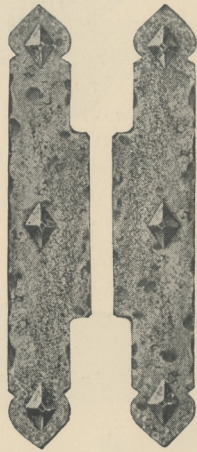
\* These hinge plates are made regularly with butt stocks as noted.  
Furnished for other size butts only when so specified in order.

Prefix letters for finish. EH colonium metal;  
DH bronze metal, black finish.

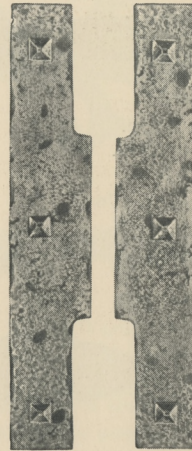




## H AND HL HINGE PLATES

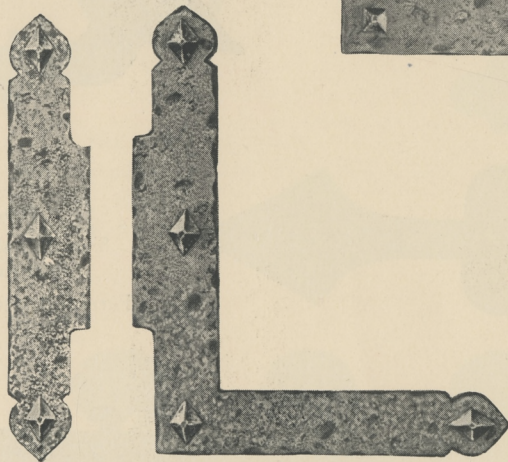
**No. 7035**

Plates, each 7 x 1 $\frac{3}{8}$  in.  
Furnished with studs No. 7647

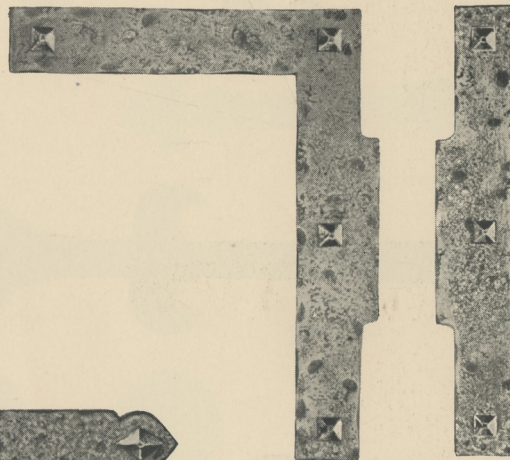
**No. 7025**

Plates, each 7 x 1 $\frac{3}{8}$  in.  
Furnished with studs No. 7653

Made regularly for use with butts 3 x 3 in. Will be furnished for butts up to 4 x 4 in. if so specified in order.

**No. 7030**

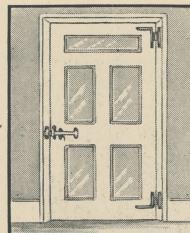
Plates 7 in. long, 1 $\frac{3}{8}$  and 5 $\frac{3}{4}$  in. wide  
Furnished with studs No. 7647

**No. 7020**

Plates 7 in. long, 1 $\frac{3}{8}$  and 5 $\frac{3}{4}$  in. wide  
Furnished with studs No. 7653

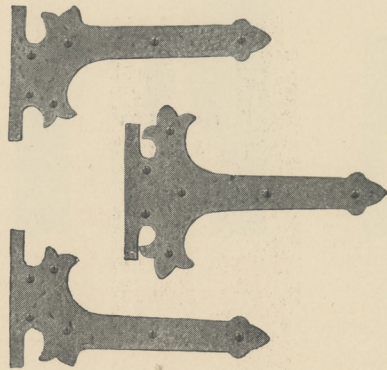
Made regularly for use with butts 3 x 3 in. Will be furnished for butts up to 4 x 4 in. if so specified in order.

Prefix letters for finish. EH colonium metal;  
DH bronze metal, black finish.





### HINGE PLATES



No. 7751

FOR CABINETS

SET

No. 7751

CORNERS

Length 8½ in.

Width, over all 5⅛ in.

Center of butt stock to outside edge 2¾ in.

CENTER

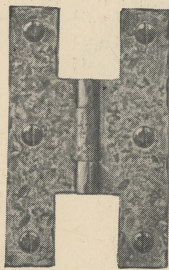
Length 8½ in.

Width, over all 5¾ in.

Butt stocks 3½ in.

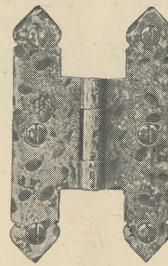
Furnished with oval-head wood screws

### H AND HL HINGES



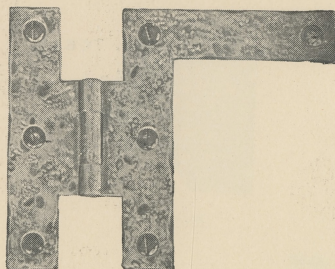
No. 7125

4 x 2½ in.



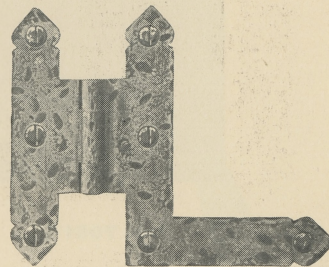
No. 7135

4 x 2½ in.



No. 7120

4 x 5 in.

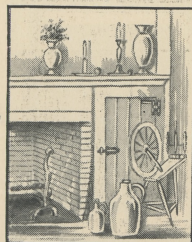


No. 7130

4 x 5 in.

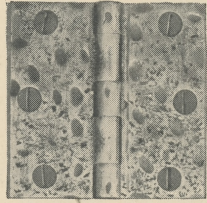
Furnished with oval-head wood screws

Prefix letters for finish. EH colonium metal;  
DH bronze metal, black finish.



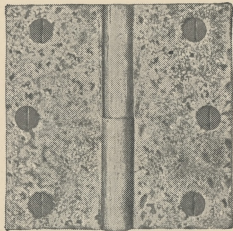


BUTTS



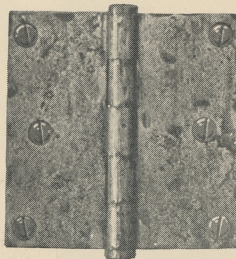
No. 7101

No. 7101  
3 x 3 in.



\* No. 7015

No. 7015  
3 x 3 in.  
3½ x 3½ "  
4 x 4 "  
4½ x 4½ "  
5 x 5 "

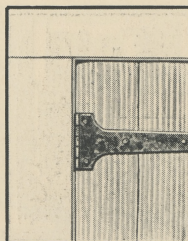


No. 7061½

No. 7061½  
3 x 3 in.  
3½ x 3½ "  
4 x 4 "  
4½ x 4½ "  
5 x 5 "

All furnished with screws for attaching

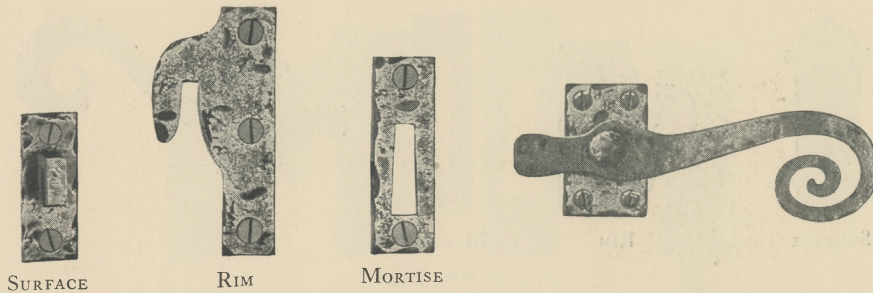
Prefix letters for finish. EH colonium metal;  
DH bronze metal, black finish.



\*Not reversible. State hand of door.



CASEMENT FASTENERS



SURFACE

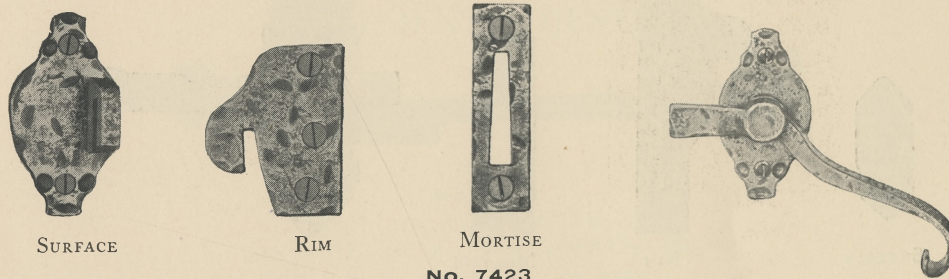
RIM

MORTISE

**No. 7420**

Plate  $2 \times 1\frac{1}{4}$  in. Lever 4 in.  
Projection  $1\frac{3}{4}$  in.

- \*No. 7420 M (with mortise strike)
- \*No. 7420 R ( " rim " )
- \*No. 7420 S ( " surface " )



SURFACE

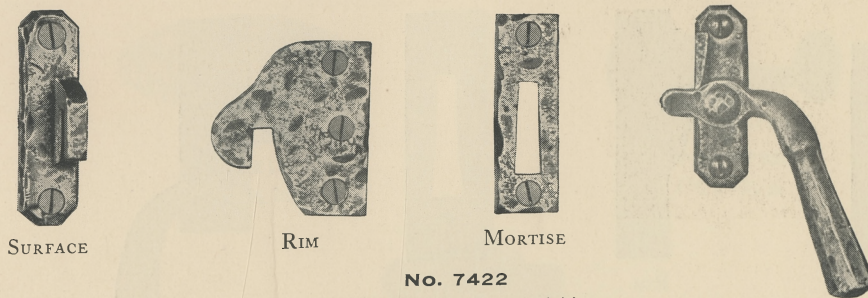
RIM

MORTISE

**No. 7423**

Plate  $2\frac{3}{4} \times 1\frac{1}{2}$  in. Lever  $3\frac{7}{8}$  in.  
Projection  $1\frac{5}{8}$  in.

- \*No. 7423 M (with mortise strike)
- \*No. 7423 R ( " rim " )
- \*No. 7423 S ( " surface " )



SURFACE

RIM

MORTISE

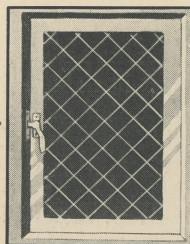
**No. 7422**

Plate  $3 \times \frac{7}{8}$  in. Lever  $3\frac{1}{4}$  in.  
Projection  $2\frac{1}{4}$  in.

- \*No. 7422 M (with mortise strike)
- \*No. 7422 R ( " rim " )
- \*No. 7422 S ( " surface " )

Furnished with wood screws

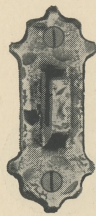
Prefix letters for finish. EH colonium metal;  
DH bronze metal, black finish.



\* Not reversible. State hand. Right hand shown.



CASEMENT FASTENERS



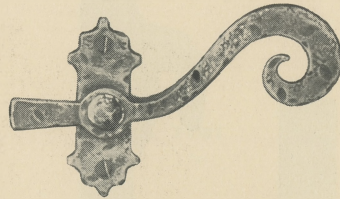
SURFACE



RIM



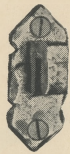
MORTISE



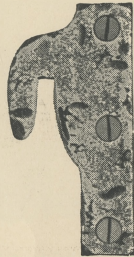
**No. 7424**

Plate  $2\frac{7}{8} \times 1\frac{1}{8}$  in. Lever 4 in.  
Projection  $1\frac{3}{4}$  in.

- \*No. 7424 M (with mortise strike)
- \*No. 7424 R ( " rim " )
- \*No. 7424 S ( " surface " )



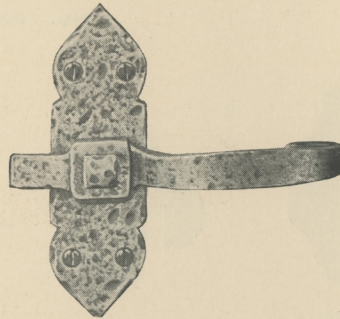
SURFACE



RIM



MORTISE



**No. 7430**

Plate  $5 \times 1\frac{1}{2}$  in. Lever 4 in.  
Projection  $1\frac{3}{4}$  in.

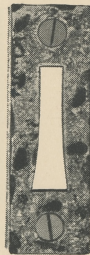
- No. 7430 M** (with mortise strike)
- No. 7430 R** ( " rim " )
- No. 7430 S** ( " surface " )



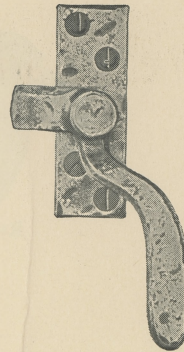
SURFACE



RIM



MORTISE



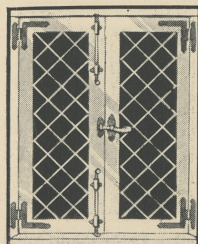
**No. 7460**

Plate  $3\frac{3}{8} \times 1\frac{1}{8}$  in. Lever  $3\frac{3}{4}$  in.  
Projection  $1\frac{1}{2}$  in.

- \***No. 7460 M** (with mortise strike)
- \***No. 7460 R** ( " rim " )
- \***No. 7460 S** ( " surface " )

Furnished with wood screws

Prefix letters for finish. EH colonium metal;  
DH bronze metal, black finish.



\*Not reversible. State hand. Right hand shown.



CASEMENT FASTENER



SURFACE

RIM

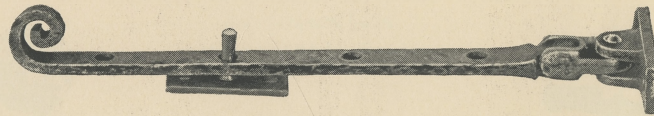
MORTISE

**No. 7461**

Plate  $3\frac{3}{8}$  x  $1\frac{1}{4}$  in. Lever 5 in.  
Projection  $1\frac{1}{2}$  in.

- \* **No. 7461 M** (with mortise strike)
- \* **No. 7461 R** ( " rim " )
- \* **No. 7461 S** ( " surface " )

CASEMENT ADJUSTER



**No. 7050**

Bar lengths 8, 10, or 12 in.  
Sash plate  $1\frac{7}{8}$  x  $\frac{3}{4}$  in. Two sill plates  $1\frac{7}{8}$  x  $1\frac{3}{4}$  in.  
In ordering, state length of bar wanted.

SASH HARDWARE  
FOR DOUBLE-HUNG WINDOWS



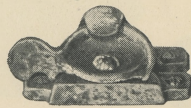
FLUSH LIFT

**No. 7218**  
 $1\frac{1}{2}$  x  $3\frac{3}{4}$  in.



BAR LIFT

**No. 7735**  
 $1\frac{1}{8}$  x  $3\frac{7}{8}$  in.

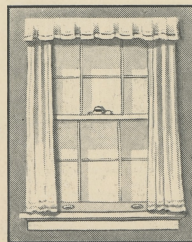


SASH FASTENER

**No. 7830** $\frac{1}{2}$   
Case  $1$  x  $2\frac{5}{8}$  in. Strike  $\frac{7}{8}$  x  $2\frac{5}{8}$  in.

All furnished with wood screws.

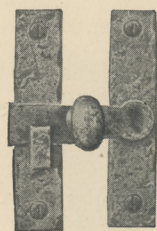
Prefix letters for finish. EH colonium metal;  
DH bronze metal, black finish.



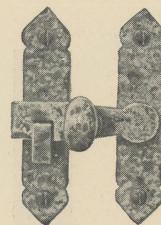
\*Not reversible. State hand. Right hand shown.



BAR LATCHES



**No. 7320**  
Plate  $3\frac{1}{2} \times \frac{3}{4}$  in.  
Length of bar 2 in.



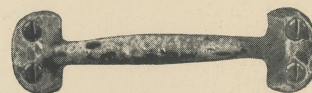
**No. 7330**  
Plates  $3\frac{1}{2} \times \frac{3}{4}$  in.  
Length of bar 2 in.

Furnished with screws

DRAWER PULLS



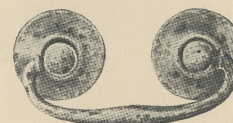
**No. 7735**  
Size  $1\frac{1}{8} \times 3\frac{7}{8}$  in. Projection  $1\frac{1}{8}$  in.



**No. 7734**  
Size  $1\frac{1}{4} \times 4\frac{1}{2}$  in. Projection  $1\frac{3}{8}$  in.



**No. 7737**  
Size  $\frac{7}{16} \times 4$  in. Projection  $1\frac{1}{4}$  in.



**No. 7304**  
Size  $1\frac{5}{8} \times 3\frac{3}{4}$  in. Projection  $\frac{7}{8}$  in.

Pull No. 7304 furnished with machine screws and nuts for attaching from inside; others with wood screws.

SHUTTER DOG



**No. 7916**  
 $2\frac{3}{8} \times 6\frac{7}{8}$   
Furnished with  $\frac{1}{2} \times 4$  in. square head lag screw.  
In ordering state hand.  
Right hand shown.

DOOR STOP



**No. 7365**  
Base  $1\frac{3}{8}$  in. dia. Projection  $4\frac{1}{2}$  in.  
Rubber tip

STUDS



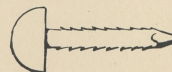
**No. 7639**  $\frac{3}{8}$  in. dia.  
**No. 7640**  $\frac{1}{2}$  " "  
**No. 7642**  $\frac{3}{4}$  " "  
**No. 7643** 1 " "  
**No. 7644**  $1\frac{1}{4}$  " "  
**No. 7645**  $1\frac{1}{2}$  " "



**No. 7652**  $\frac{1}{4}$  in.  
**No. 7653**  $\frac{3}{8}$  " "  
**No. 7655**  $\frac{1}{2}$  " "  
**No. 7657**  $\frac{3}{4}$  " "  
**No. 7658** 1 " "  
**No. 7659**  $1\frac{1}{4}$  " "  
**No. 7660**  $1\frac{1}{2}$  " "



**No. 7647**  $\frac{1}{2} \times \frac{3}{4}$  in. **No. 7649**  $\frac{1}{16}$  in. dia.  
**No. 7648**  $\frac{3}{4} \times 1$  " "



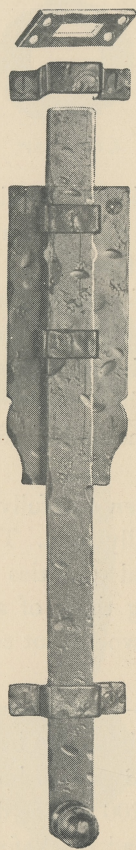
All stud shanks are burred to prevent loosening.

Prefix letters for finish. EH colonium metal;  
DH bronze metal, black finish.





BOLTS



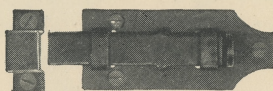
**No. 7560**

\* Lengths 9, 12, or 18 in.  
Bolt projects 1½ in.  
Made in DH finish only.



**No. 7562**

Width of plate 1 in.  
\* Lengths 2, 2½, or 3 in.  
Bolt projects ¾ in.  
Made in DH finish only.



**No. 7561**

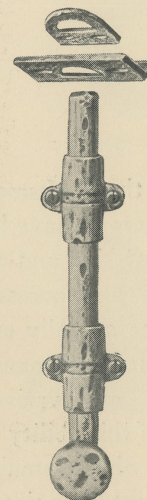
Width of plate 1⅛ in.  
\* Lengths 2, 2½, or 3 in.  
Bolt projects ¾ in.  
Made in DH finish only.



**No. 7585**

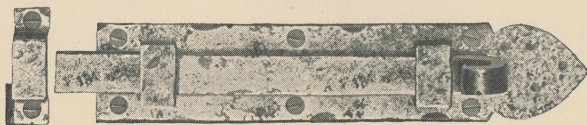
Width of plate 1 in.  
Length 2½ in. Strike 1¼ in.  
Bolt projects ½ in.

\* In ordering, state length desired.



**No. 7580½**

½ in. rod. Bolt projects ⅝ in.  
\* Lengths 6, 9, or 12 in.

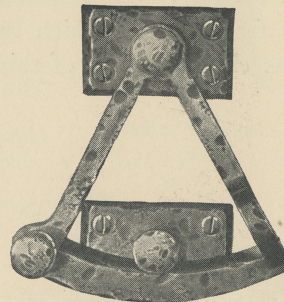


**No. 7582**

Length 8 in.  
Bolt projects ⅝ in.

All furnished with screws for attaching.

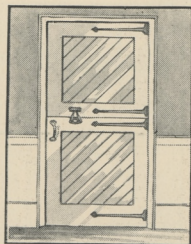
QUADRANT  
FOR DUTCH DOORS



**No. 7364½**

Plates 2⅜ x 1½ in.  
Height, over all 4¾ in.  
In ordering, state hand. Right hand shown.

Prefix letters for finish. EH colonium metal;  
DH bronze metal, black finish.





## PART II

## Early New England Wrought Iron Hardware

Among the craftsmen of Early New England, there appears to have been an unwritten code governing the design and construction of all buildings, furnishings and accessories. The gist of such a code, if one actually existed, may well have been "Utility and permanence without affectation." They built conservatively, but they built well and evidence of this ability is to be had in the numerous structures which remain long after them.

They spent little time in adorning their work, but long wearisome hours in making it strong and practical. Naturally, this characteristic has been reflected in the hardware they made. They formed it from bars of iron with hammer on anvil, omitting intricate detail from their designs and working into them instead a ruggedness which typifies the era.

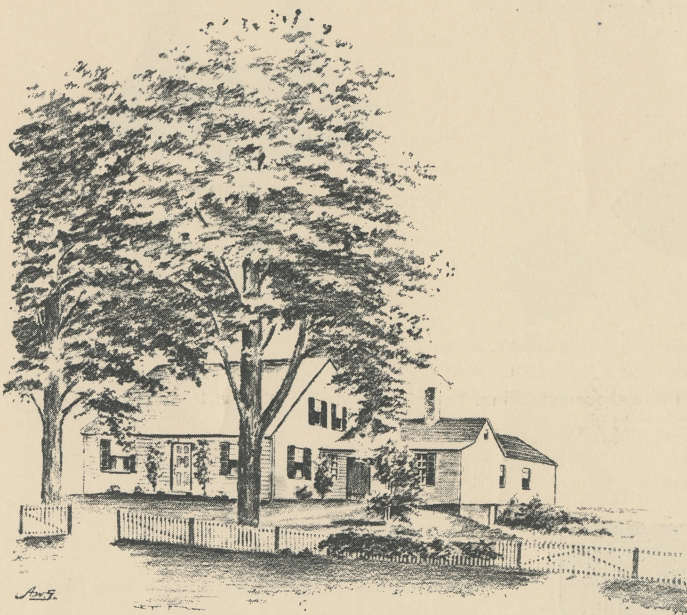
Corbin presents on the following pages an assortment of Early New England Wrought Iron Hardware for homes in which the beautiful simplicity of the characteristics of this particular period are

embodied. The designs are identical with many created by the iron workers of the times and which by their merits found popular favor.

Each piece is individually forged by hand from heated iron. The surface and contour of the articles vary slightly in appearance, due to the method of manufacture, but are reasonably uniform in size, so that the dimensions given should be sufficient for ordinary application.

The articles shown have been carefully selected from among the many originally used. They have been chosen for their practical qualities and representative design, eliminating those of a more or less freakish nature or which would not seem suitable for modern use.

Two finishes are provided—DD, or dead black, HD, or half polished. Either finish can be supplied on all articles except No. 3988 garage bolt, No. 3 garage door holder, and No. 200 garage door lock, which are made in DD, or dead black finish only. Each piece is subjected to a rust-proofing process.





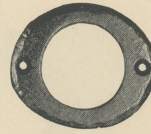
ENTRANCE DOOR HANDLES  
AND THUMB LATCHES



No. 9313



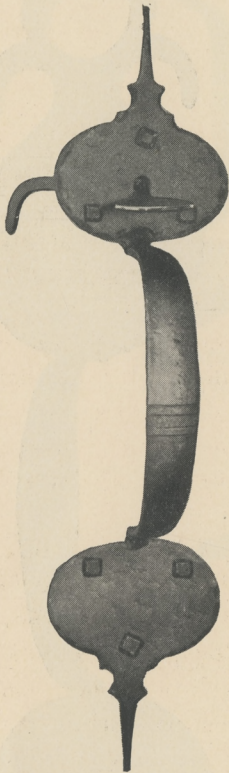
No. 9413



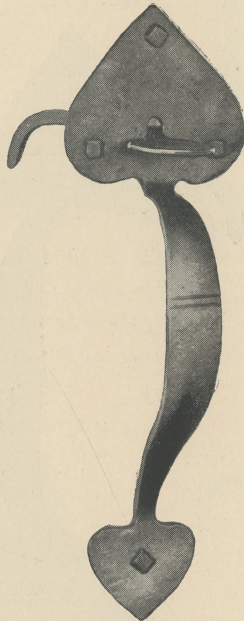
No. 9213



No. 9513



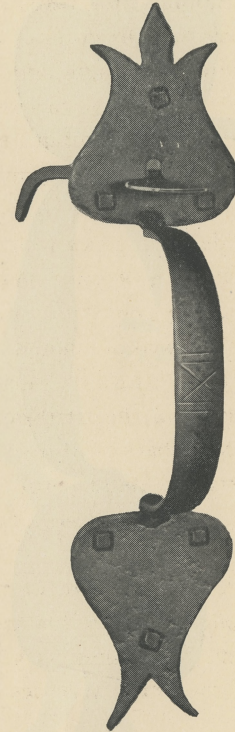
Nos. 96184,  
961



Nos. 96284,  
962



Nos. 96684,  
966



Nos. 96384,  
963

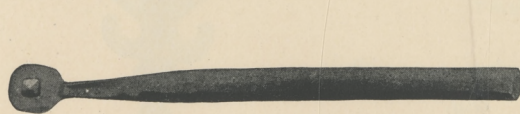
The numbers above ending in 84 indicate Entrance Door Handles. When ordered by these numbers, the handles are furnished with cylinder collars and shortened thumbpiece for use with locks.

When the terminal 84 is dropped the numbers indicate thumb latches and are furnished with latch bar No. 9040 and long thumbpiece. The cylinder collars are omitted.

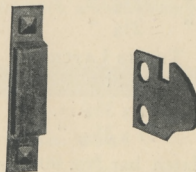
DESCRIPTION

No.	HANDLES		CYLINDER COLLARS		THUMB LATCHES	
	Size	Projection	No.	Size	No.	Size Latch Bar No.
96184	12 x 2 3/4 in.	2 3/8 in.	9313	3 1/4 x 2 1/4 in.	961	12 x 2 3/4 in. 9040
96284	9 3/4 x 2 7/8 "	2 1/4 "	9413	2 3/8 x 2 3/8 "	962	9 3/4 x 2 7/8 " "
96384	11 1/4 x 2 3/4 "	2 3/8 "	9513	3 1/4 x 2 3/8 "	963	11 1/4 x 2 3/4 " "
96684	8 3/4 x 3 "	2 1/4 "	9213	2 x 2 1/4 "	966	8 3/4 x 3 " "

LATCH BAR



No. 9040  
8 in.

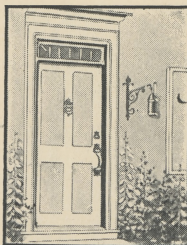


Entrance door handles, packed one in a box with cylinder collars and drive screws.

Thumb latches, one in a box with latch bar and drive screws.

Cylinder collars and latch bars, twelve in a box with drive screws.

Prefix letters for finish. DD dead black;  
HD half polished.





ENTRANCE DOOR HANDLES  
AND THUMB LATCHES

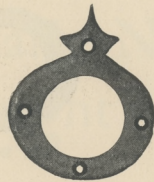


\* No. 96884

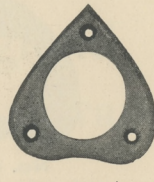
Entrance door handles, packed one in a box with cylinder collars and drive screws.

Thumb latches, one in a box with latch bar and drive screws.

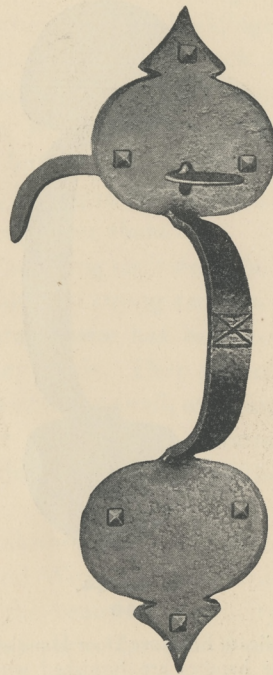
Cylinder collars and latch bars, twelve in a box with drive screws.



No. 9113



No. 9013



Nos. 96484,  
964



Nos. 96584,  
965

The numbers above ending in 84 indicate entrance door handles. When ordered by these numbers, the handles are furnished with cylinder collars and shortened thumbpiece for use with locks.

When the terminal 84 is dropped the numbers indicate thumb latches and are furnished with latch bar No. 9040 and long thumbpiece. The cylinder collars are omitted.

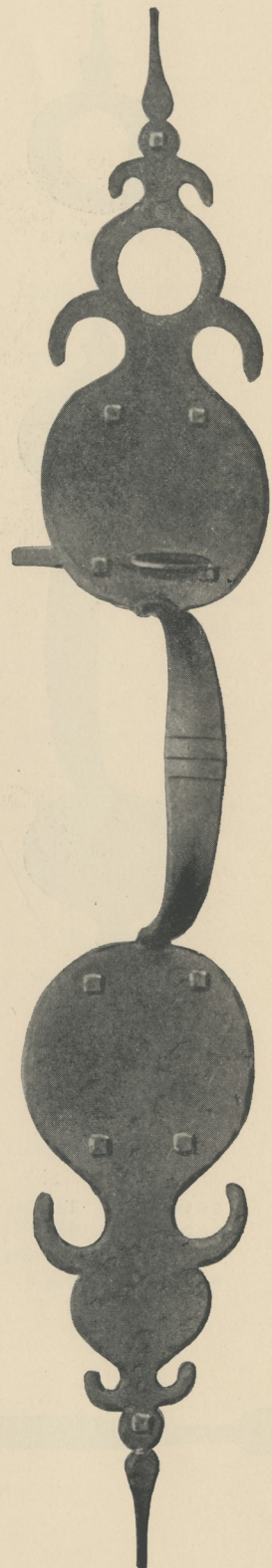
DESCRIPTION

HANDLES			CYLINDER COLLARS	
No.	Size	Projection	No.	Size
96484	11 x 3 3/8 in.	2 1/4 in.	9113	2 3/4 x 2 1/4 in.
96584	11 x 3 1/8 "	2 1/4 "	9013	2 3/8 x 2 1/4 "
96884	18 x 3 1/2 "	2 1/4 "		
96984	23 3/4 x 3 5/8 "	2 1/4 "		

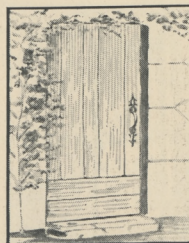
THUMB LATCHES		
No.	Size	Latch Bar No.
964	11 x 3 3/8 in.	9040
965	11 x 3 1/8 "	"

See illustration of latch bar No. 9040 on preceding page.



\* No. 96984

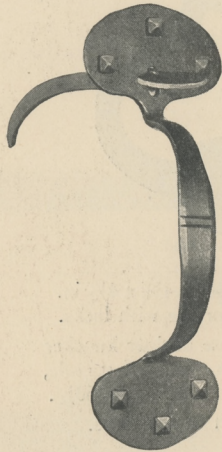
Prefix letters for finish. DD dead black;  
HD half polished.



\* These handles have cylinder collars attached and are furnished only for use with cylinder locks.



THUMB LATCHES



No. 979  
7 x 2 1/4 in.



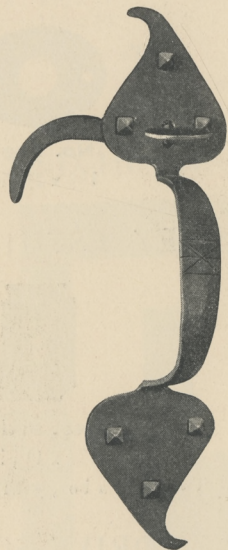
No. 980  
8 1/2 x 3 in.



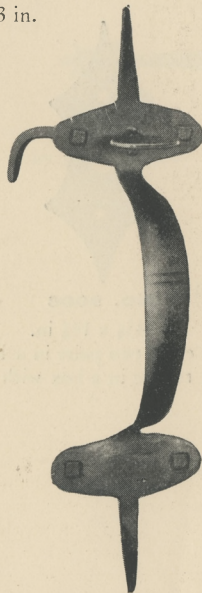
No. 981  
8 1/2 x 2 in.



No. 982  
9 x 2 1/4 in.



No. 983  
8 3/4 x 2 1/8 in.



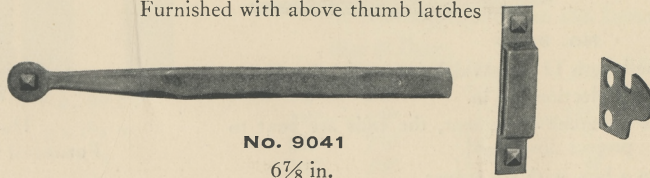
No. 984  
9 1/4 x 2 1/2 in.



No. 985  
10 1/2 x 1 1/2 in.

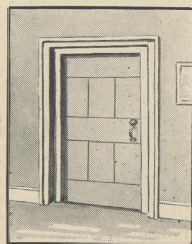
LATCH BAR

Furnished with above thumb latches



No. 9041  
6 7/8 in.

Prefix letters for finish. DD dead black;  
HD half polished

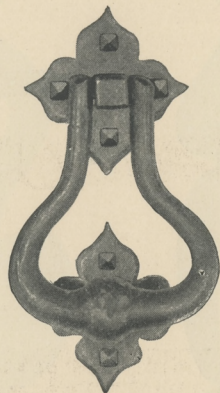


Thumb latches, two in a box, with latch bars  
and drive screws.

Latch bars, twelve in a box, with screws and  
drive screws.



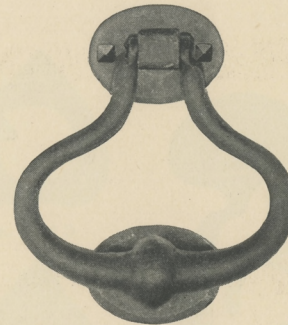
DOOR KNOCKER



**No. 9370**

Plates  $2\frac{3}{4} \times 2\frac{3}{4}$  in. Ring  $5 \times 3\frac{5}{8}$  in.  
One in a box with drive screws and bolt.

\*DROP HANDLE



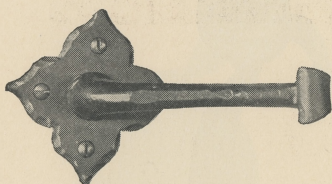
**No. 9260**

Plates  $1\frac{5}{8} \times 2\frac{1}{8}$  in. Ring  $4\frac{5}{8} \times 4\frac{1}{4}$  in.  
With  $\frac{5}{16}$  in. spindle for use with locks.

\*Furnished also for use as door knocker with through bolt in place of spindle, when indicated in order by No. 9260 $\frac{1}{2}$ .

One in a box with drive screws.

LEVER HANDLE AND ROSES

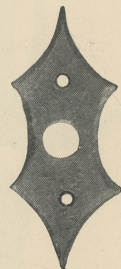


**LEVER No. 9112**

Length  $3\frac{1}{4}$  in. Projection  $2\frac{3}{8}$  in.

**ROSE No. 9005**

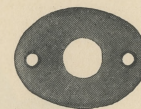
$2\frac{3}{4} \times 2\frac{3}{4}$  in.



**No. 9006**

$4\frac{1}{4} \times 1\frac{3}{4}$  in.

Lever, two pairs in a box.  
Roses, twelve in a box with screws.



**No. 9003**

$1\frac{5}{8} \times 2\frac{1}{8}$  in.

KEY ESCUTCHEON



**No. 9200**

$1\frac{7}{8} \times 1\frac{1}{8}$  in.

Twelve in a box, with drive screws.

FOOT SCRAPER



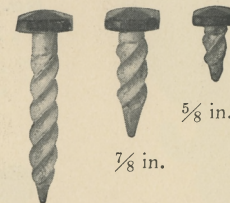
**No. 9090**

Extreme length 12 in. Width  $6\frac{1}{4}$  in.  
Projection  $6\frac{1}{2}$  in.

When ordered for use on stone or cement, the ends are bent to project downward.

One in a box, with lag screws

DRIVE SCREWS



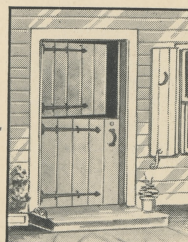
$\frac{5}{8}$  in.

$\frac{7}{8}$  in.

1 $\frac{1}{8}$  in.

Furnished with articles where required.

Prefix letters for finish. DD dead black;  
HD half polished.

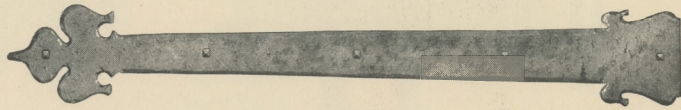




HINGE PLATES



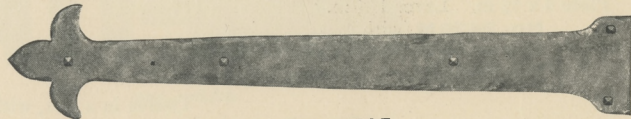
**No. 9721**  
 1½ x 14 in.  
 1½ x 22 "  
 1½ x 30 "



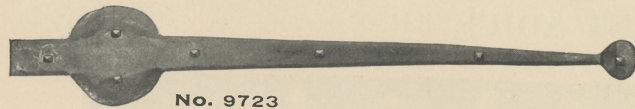
**No. 9724**  
 4 x 27¼ in.



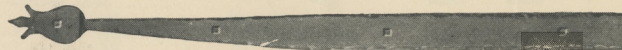
**No. 9722**  
 1½ x 14 in.  
 1½ x 22 "  
 1½ x 30 "



**No. 9725**  
 4 x 22½ in.



**No. 9723**  
 1½ x 14 in.  
 1½ x 22 "  
 1½ x 30 "

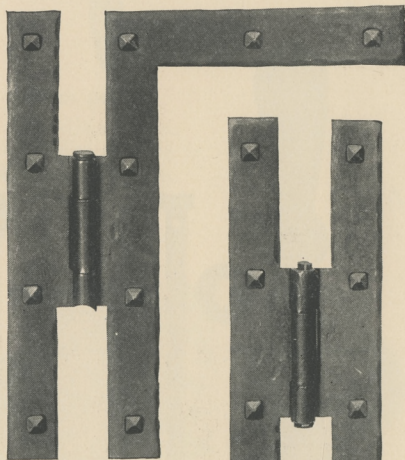


**No. 9726**  
 1½ x 14 in.  
 1½ x 22 "  
 1½ x 30 "

Width, over all 4 in.

Hinge plates, two in a box, with drive screws.  
 In ordering, state size.

H AND HL HINGES

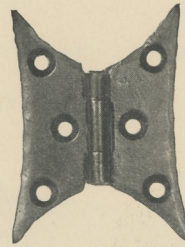


**No. 9125**  
 3 x 3 in.  
 4 x 4 "  
 7 x 6¾ "  
 9 x 8½ "

Six pairs in a box,  
 with drive screws.

**No. 9120**  
 3 x 1¾ in.  
 4 x 1⅞ "  
 7 x 2¼ "  
 9 x 2½ "

BUTTERFLY HINGE



**No. 9515**  
 2½ x 2 in.

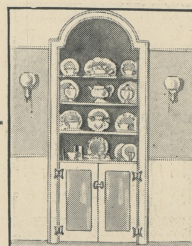
Six pairs in a box, with screws.

RECOMMENDED USE OF H AND HL HINGES

FOR CUPBOARD AND INTERIOR DOORS

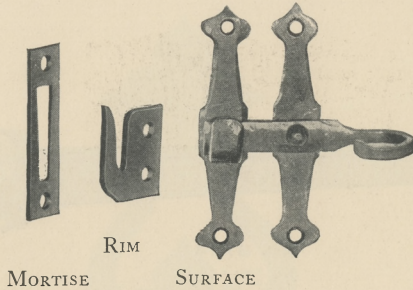
Size of Door			Hinges	Size
Height	Width	Thickness		
2'0"	1'8"	7/8"	1 pair HL Hinges	3 in.
3'0"	1'8"	1"	1 pair HL Hinges, ½ pair H Hinges	4 "
6'8"	2'6"	1 1/8"	" " "	7 "
7'0"	2'8"	1 3/4"	" " "	9 "

Prefix letters for finish. DD dead black;  
 HD half polished.

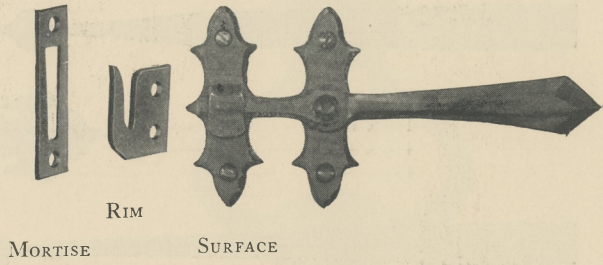




CASEMENT FASTENERS



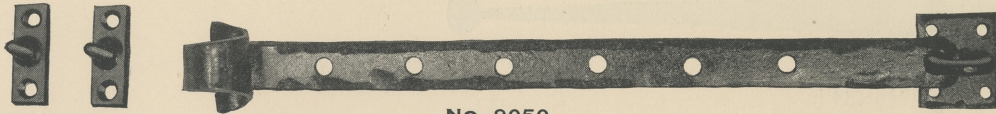
**No. 9430**  
 Plate 4 x 3/4 in. Lever 1 3/4 in. Projection 1 1/4 in.  
**No. 9430 M** (with mortise strike)  
**No. 9430 R** (" rim ")  
**No. 9430 S** (" surface ")



**No. 9432**  
 Plate 3 x 1 1/4 in. Lever 4 in. Projection 1 1/4 in.  
**No. 9432 M** (with mortise strike)  
**No. 9432 R** (" rim ")  
**No. 9432 S** (" surface ")

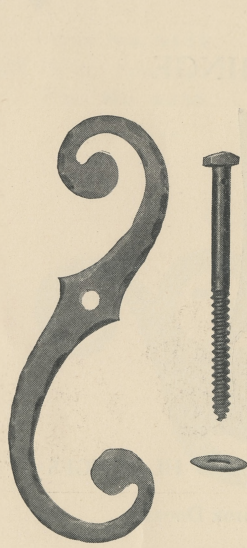
Twelve in a box, with screws.

CASEMENT ADJUSTER



**No. 9050**  
 Plates, sash 2 x 1 1/4 in., sill 2 x 3/4 in.  
 Length of bar 10, 12, or 15 in.  
 In ordering, state length.  
 Four in a box, with screws.

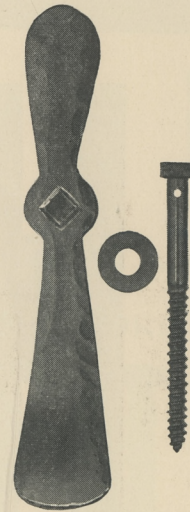
SHUTTER DOGS



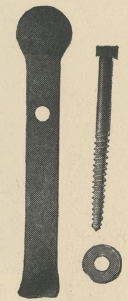
\* **No. 9916**  
 6 3/4 x 2 1/4 in.



\* **No. 9917**  
 8 1/4 x 3 in.



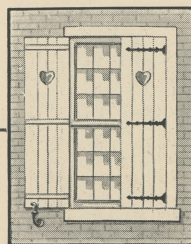
**No. 9915**  
 7 1/4 x 1 1/2 in.



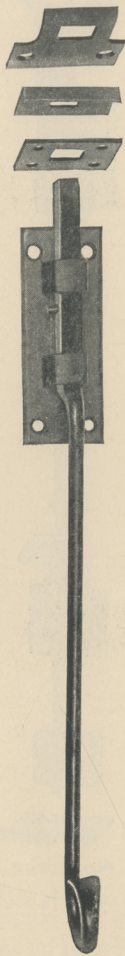
**No. 9914**  
 6 3/4 x 1 1/4 in.

Twelve in a box.

Prefix letters for finish. DD dead black;  
 HD half polished.

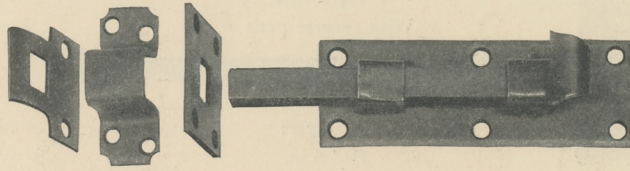


\*Not reversible. In ordering state hand.  
 Left hand shown.

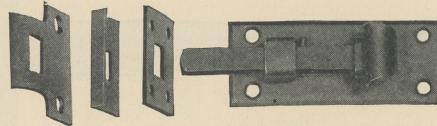


**No. 9581**  
Plate  $3\frac{1}{2} \times 1\frac{3}{8}$  in.  
Length, over all  $12\frac{1}{2}$  in.  
Bolt projects  $\frac{3}{4}$  in.

**BOLTS**

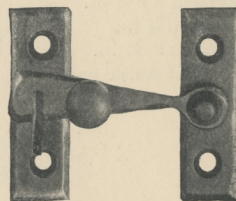


**No. 9582**  
 $5\frac{3}{4} \times 1\frac{3}{4}$  in.  
Bolt projects  $1\frac{1}{2}$  in.



**No. 9580**  
 $3\frac{1}{2} \times 1\frac{3}{8}$  in.  
Bolt projects  $\frac{3}{4}$  in.  
Bolts six in a box, with screws.

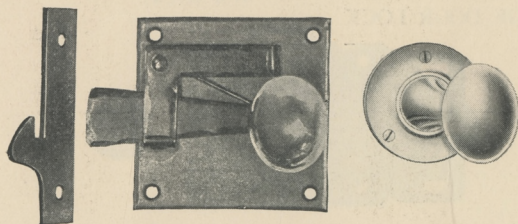
**BAR LATCH**



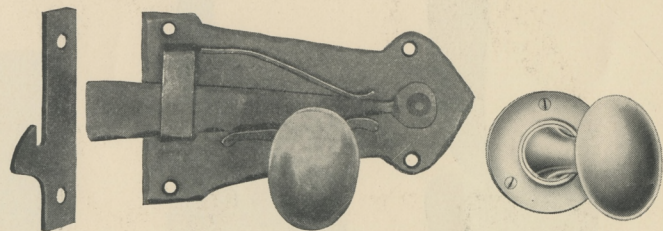
**No. 9320**  
Plate and strike  $2 \times \frac{3}{4}$  in.  
Bar length  $2\frac{1}{4}$  in.  
Has brass knob.  
Twelve in a box, with screws.

**RIM KNOB LATCHES**

\* NOT REVERSIBLE



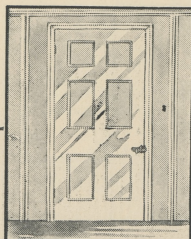
**No. 9401**  
3 x 3 in.  
Includes one pair polished brass knobs  $1\frac{1}{2} \times 1\frac{1}{4}$  in.  
and brass rose  $1\frac{3}{4}$  in. dia.



**No. 9400**  
3 x 5 in.  
Includes one pair polished brass knobs  $1\frac{7}{8} \times 1\frac{3}{8}$  in. and brass  
rose  $1\frac{3}{4}$  in. dia.

One set in a box, with screws.

Prefix letters for finish. DD dead black;  
HD half polished.

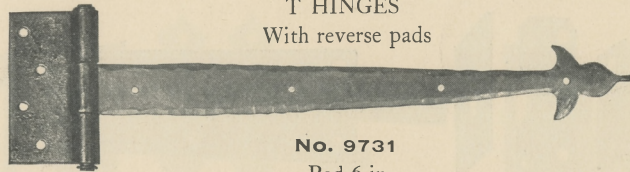


\* In ordering, state hand. Left hand shown.

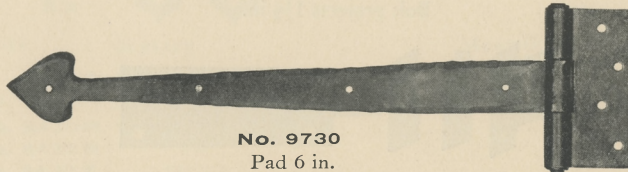


**GARAGE HARDWARE**

**T HINGES**  
With reverse pads

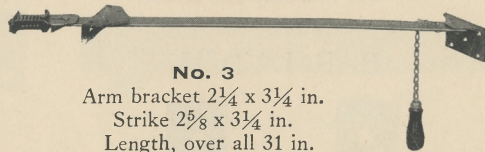


**No. 9731**  
Pad 6 in.  
Lengths 20 or 30 in.  
In ordering, state length.



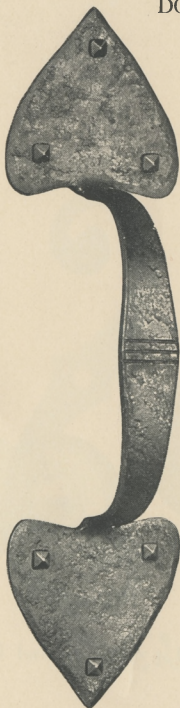
**No. 9730**  
Pad 6 in.  
Lengths 20 or 30 in.  
In ordering, state length.  
One pair in a box, with screws and through bolts.

**DOOR HOLDER**

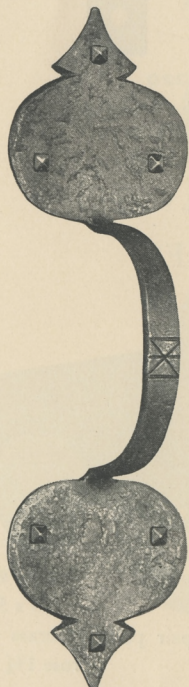


**No. 3**  
Arm bracket  $2\frac{1}{4} \times 3\frac{1}{4}$  in.  
Strike  $2\frac{5}{8} \times 3\frac{1}{4}$  in.  
Length, over all 31 in.  
Furnished in DD finish only.  
One pair in a box, with screws.

**DOOR PULLS**

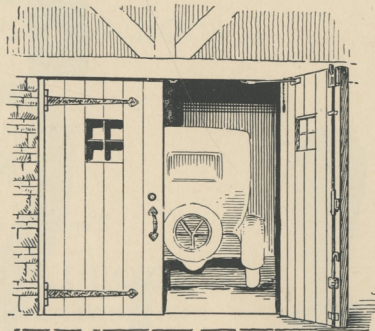


**No. 9186**  
11 x  $3\frac{1}{8}$  in.  
Projection  $2\frac{1}{4}$  in.  
Three in a box, with drive screws.

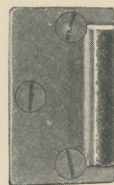


**No. 9086**  
11 x  $3\frac{3}{8}$  in.  
Projection  $2\frac{1}{4}$  in.  
Three in a box, with drive screws.

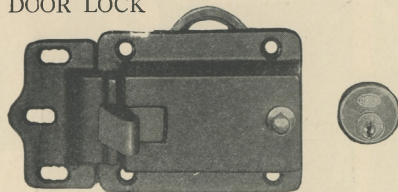
Prefix letters for finish. DD dead black;  
HD half polished.



**GARAGE DOOR LOCK**

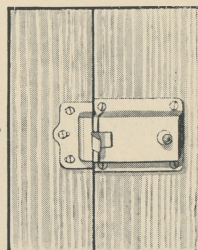


**STRIKE No. 1**  
For single doors.  
Furnished when so ordered.  
For pairs of hinged doors  $1\frac{1}{8}$  to  $2\frac{3}{4}$  in. thick opening out.  
The broad latching surface of the strike insures a safe grip for the latch bolt regardless of how much the door may sag.

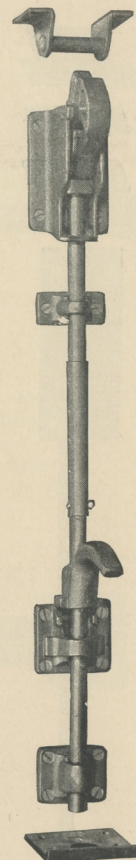


**No. 200**  
Case  $4\frac{1}{2} \times 4\frac{5}{8}$  in.  
Backset 3 in.

Operates by key from outside and thumb piece inside. The stop holds the bolt retracted.  
Furnished in DD finish only.  
One in a box, with screws.



**DOOR BOLT**



**No. 3988**  
End case  $3\frac{3}{4} \times 2\frac{1}{2}$  in.  
Center case  $2\frac{1}{8} \times 2\frac{1}{2}$  in.  
Rod  $\frac{1}{2}$  in. dia.  
Adjustable for doors  
7'  $11\frac{1}{2}$ " to 8' 6"  
Can be adapted to  
shorter doors.  
Furnished in DD  
finish only.  
One in a package,  
with screws.

