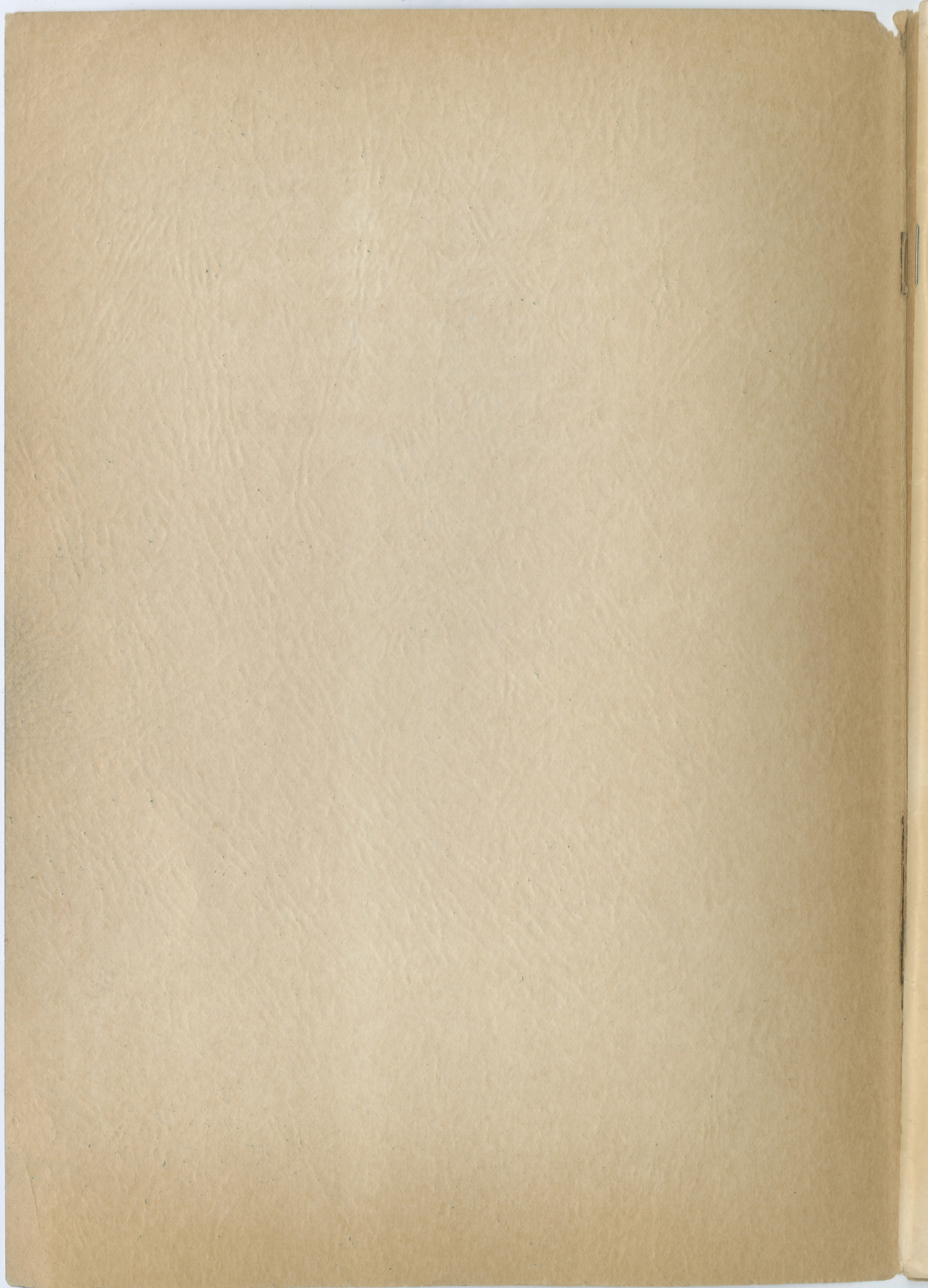


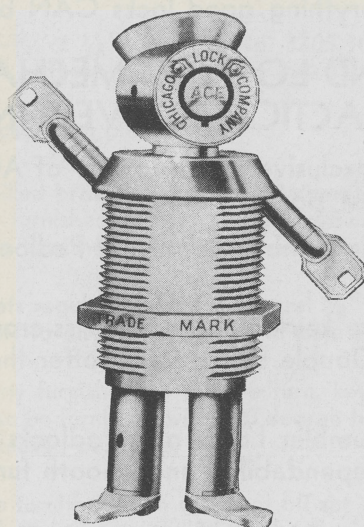


PATENTED LOCK DESIGNS • EXCLUSIVE MANUFACTURERS OF
ACE 7 PIN TUMBLER AND 11 BLADE TUMBLER LOCKS

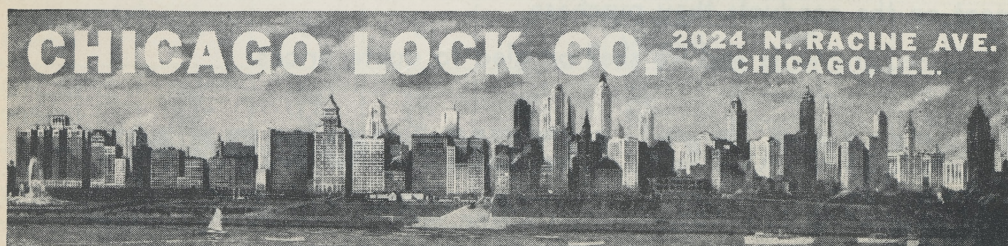




CATALOG No. 105



Locks for Every Purpose





Foreword . . .

A PRODUCT is as dependable as the Institution behind it, which in turn, is the expression of the personalities who built it. A business and its products reflect the ambitions, character, ideas, and the purposes of the men at the head.

A LOCK is just what its manufacturers want it to be.

QUALITY

Years of lock engineering and manufacture by the oldest lock company in the middle west are built into these locks. Experience, an organization of skilled men, and the best of materials make CHICAGO LOCKS what they are. This Chicago Lock Company catalog offers you the achievement of this combination in locks of the finest quality as the satisfactory solution of lock problems for your own business.

Here are presented the new improved Chicago Locks. They are manufactured in our own factory and built to highest standards. As the result of human ingenuity, skill, and precision methods they are everything good locks CAN be.

LOCKS AND LOCKING MECHANISMS FOR PRACTICALLY EVERY NEED

Chicago Lock Company is the exclusive manufacturer of ACE 7 Pin Tumbler Locks and Padlocks which give the greatest possible security.

Chicago conventional 4 and 5 Pin Tumbler Locks and Padlocks provide excellent security at moderate cost.

Double bitted keys, plus positive key-actuated 11 criss-cross tumbler action, and other improved features of Chicago Double Bitted Locks offer the logical solution of many of your lock problems.

Chicago Single Bitted 5 Disc Tumbler Locks and Padlocks are the low cost answer to your need for good security, dependability and smooth functioning.

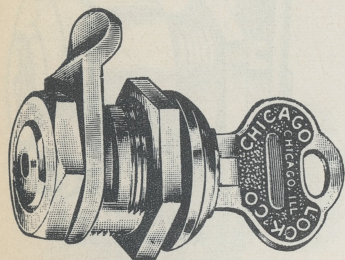
Specify CHICAGO LOCKS

The dependable protection and trouble free operation of Chicago Locks have elected them to leadership in the industry. More and more manufacturers are adopting them as standard equipment and experienced buyers everywhere are specifying Chicago Lock equipment on the products they purchase.

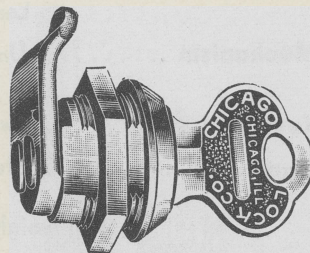
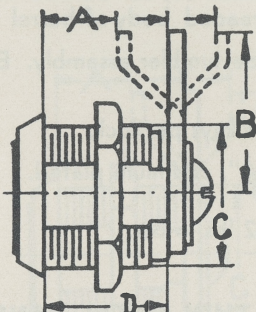
Tell us your requirements and we shall be glad to quote prices.

CHICAGO LOCK COMPANY
2024 N. RACINE AVE., CHICAGO 14, ILL.

CHICAGO DOUBLE BITTED LOCKS FOR METAL



No. 3205-10
Removable Cam



No. 2306
Riveted Cam

Mechanism Unit eleven blade tumbler assembly. Tumblers encased in brass frame.

Cylinder Cast. Nickel plate and polish finish.

Cam Steel— $\frac{3}{4}$ " x $\frac{1}{8}$ " on locks No. 3205-10, No. 3205-20, No. 3205-30 and No. 3186-A. Steel— $\frac{3}{32}$ " x $\frac{5}{8}$ " on lock No. 2306.

Cam and Hex. Nut... Steel, cadmium plated.

Keys Two milled brass keys per lock. When locks are ordered keyed alike, only one key is furnished per lock. 250 different key changes regularly furnished. Can be furnished keyed alike, or alike in sets if specified.

Flats Two flats regularly milled on barrel $\frac{5}{8}$ " across. Can be furnished with one or two flats to any dimension to fit hole in metal panel.

Operation Regularly furnished 90 degree turn, key withdrawing only in locked position. Can also be furnished with 180 degree turn, key withdrawing in both the locked and unlocked positions.

Special Feature..... Can be furnished with different off-set cams to give different "A" dimensions desired, and dimension "B" can be furnished to any length specified for special installations.

SPECIFICATIONS

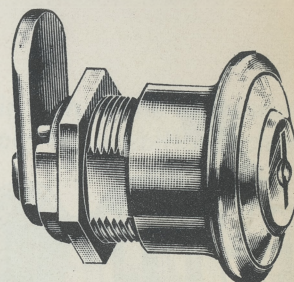
Catalog Number	A	B	C	D	Thickness of Material	Cam	Net Weight Per Dozen
3205-10	$\frac{1}{4}$ "	$\frac{13}{16}$ "	$\frac{3}{4}$ "	$\frac{7}{16}$ "	$\frac{1}{4}$ "	Removable	1 lb. 8 ozs.
3205-20	$\frac{3}{16}$ "	$\frac{13}{16}$ "	$\frac{3}{4}$ "	$\frac{7}{16}$ "	$\frac{3}{16}$ "	Removable	1 lb. 8 ozs.
3205-30	$\frac{5}{16}$ "	$\frac{13}{16}$ "	$\frac{3}{4}$ "	$\frac{7}{16}$ "	$\frac{5}{16}$ "	Removable	1 lb. 8 ozs.
2306	$\frac{1}{4}$ "	$\frac{13}{16}$ "	$\frac{3}{4}$ "	$\frac{7}{16}$ "	$\frac{1}{4}$ "	Riveted	1 lb. 5 ozs.
3186-A	$\frac{5}{8}$ "	$1\frac{1}{8}$ "	$\frac{3}{4}$ "	$\frac{5}{8}$ "	$\frac{5}{16}$ "	Removable	1 lb. 14 ozs.

CHICAGO DOUBLE BITTED LOCKS

No. 3171 KNOB LOCK

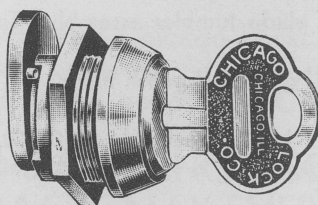
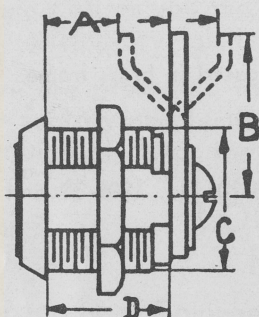
- Cylinder** Cast. Knob extends 11/16" outside of panel.
Length over threaded body of barrel 17/32".
- Mechanism** Unit eleven blade tumbler assembly. Encased
in brass frame.
- Keys** Two milled brass keys per lock.
- Cam** Steel, 3/32" x 5/8", cadmium plated.

Net weight per dozen 2 lbs. 6 ozs.

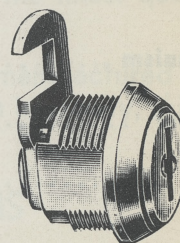


**No. 3171
Riveted Cam**

FOR THIN METAL PANELS



**No. 3174
Riveted Cam**



**No. 3118
Riveted Hook Cam**

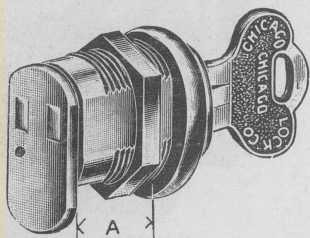
- Cylinder** Cast. 3/4" diameter. Polished nickel finish.
- Mechanism** Unit eleven blade tumbler assembly. Encased in brass frame.
- Cam** Steel, cadmium plated. 3/32" x 5/8".
- Keys** Two milled brass keys per lock. 250 different key changes regularly furnished.
Can be furnished keyed alike, or alike in sets if specified.
- Flats** Two flats regularly milled on barrel 5/8" across. Can be furnished with one or
two flats to any dimension to fit hole in metal panel.
- Operation** Regularly furnished 90 degree turn, key withdrawing only in locked position.
Can also be furnished with 180 degree turn, key withdrawing in both the locked
and unlocked positions.
- Special Feature** Can be furnished with different off-set cams to give different "A" dimension
desired, and dimension "B" can be furnished to any length specified for special
installations.

SPECIFICATIONS

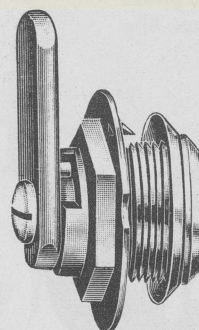
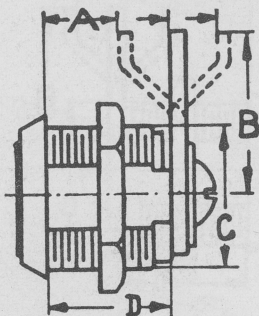
Catalog Number	A	B	C	D	Cam	Net Weight Per Dozen
3174	7/16"	37/64"	3/4"	7/16"	Riveted	1 lb. 5 ozs.
3118	7/16"	7/8"	3/4"	7/16"	Riveted	1 lb. 5 ozs.

CHICAGO DOUBLE BITTED LOCKS

FOR METAL PANELS



No. 2221
Riveted Cam



No. 2234
Removable Cam

Mechanism Unit eleven blade tumbler assembly. Encased in brass frame.

Cylinder Lock No. 2221, cast. Lock No. 2234, brass. Finish polished nickel.

Cam Steel— $\frac{3}{32}$ " x $\frac{5}{8}$ ". Cadmium plated.

Keys Two milled brass keys per lock. When locks are ordered keyed alike, only one key is furnished per lock. 250 different key changes regularly furnished. Can be furnished keyed alike, or alike in sets if specified.

Flats Two flats regularly milled on barrel $\frac{5}{8}$ " across. Can be furnished with one or two flats to any dimension to fit hole in metal panel.

Operation Regularly furnished 90 degree turn, key withdrawing only in locked position. Can also be furnished with 180 degree turn, key withdrawing in both locked and unlocked positions.

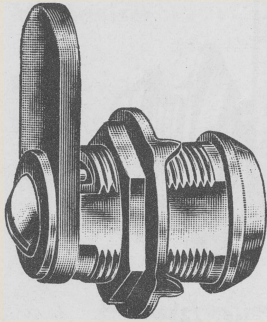
Special Feature Can be furnished with off-set cams to give any dimension "A" required, or can be furnished with hook cams illustrated on page 54.

SPECIFICATIONS

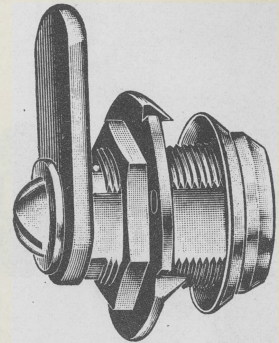
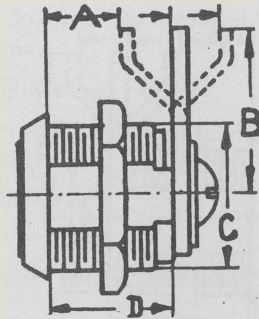
Catalog Number	A	B	C	D	Cam	Net Weight Per Dozen
2221	$\frac{5}{8}$ "	$\frac{5}{8}$ "	$\frac{3}{4}$ "	$\frac{5}{8}$ "	Riveted	1 lb. 5 ozs.
2234	$\frac{5}{8}$ "	$1\frac{1}{16}$ "	$\frac{3}{4}$ "	$\frac{5}{8}$ "	Removable	1 lb. 8 ozs.

CHICAGO DOUBLE BITTED LOCKS FOR WOOD PANELS

*Illustrations
Actual Size*



**No. 2430
Removable Cam**



**No. 2530
Removable Cam**
Furnished with additional locking
bar feature described on page 10

EASILY INSTALLED

Cylinder Cast. Polished nickel finish.

Mechanism Eleven blade tumbler assembly. Tumblers encased in brass frame. Each tumbler operates on both sides of double bitted key, and as key is inserted tumblers are positively placed in proper position to insure easy operation of lock.

Keys Two milled brass keys per lock. When locks are ordered keyed alike, only one key is furnished per lock. 250 different key changes regularly furnished. Can be furnished keyed alike, or alike in sets if specified.

Operation Regularly furnished with 90 degree turn, key withdrawing only in locked position. Can also be furnished 180 degree turn, key withdrawing in both locked and unlocked position.

Special Feature Lock No. 2530 is regularly furnished with special locking bar described on page 10. This additional mechanical feature gives added security to lock, is simple in construction and is manually operated by the point of same key which also operates the eleven tumblers. Locks No. 2430 and No. 2530 can be furnished with different off-set cams to give different "A" dimension desired, and dimension "B" can be furnished to any length specified for special installations.

SPECIFICATIONS

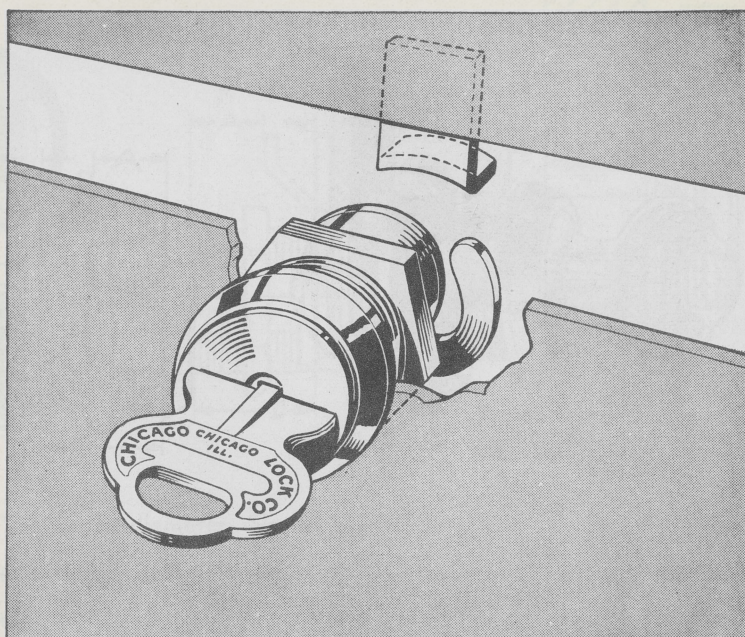
Catalog Number	A	B	C	D	Cam	Net Weight Per Dozen
2430	$\frac{13}{16}$ "	$1\frac{1}{8}$ "	$\frac{3}{4}$ "	$\frac{13}{16}$ "	Removable	2 lbs.
2530	$\frac{13}{16}$ "	$1\frac{1}{8}$ "	$\frac{3}{4}$ "	$\frac{13}{16}$ "	Removable	2 lbs.

NEW DRAW-TIGHT CAM

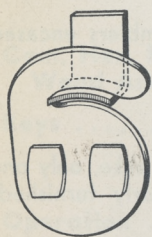
SOLVES MANY SPECIAL-USE LOCK PROBLEMS

MANY USES

Luggage
Metal cash boxes
Metal bond boxes
Jewel cases
Cellarettes
Overnight cases
Fishing tackle boxes
Tool boxes and chests
Sliding doors and panels
Metal cabinet doors
... and any other lid-type
installation where the pull
is parallel to the cam.



No. 3174-95 equipped with Draw-Tight Cam as used by a large luggage manufacturer.



Actual Size

Here's a new angle on locking that solves many unusual installation problems — a specially designed hook cam that draws up tight as it locks. Ideal for use on luggage where dust-tight covers are important ... for metal cash and bond boxes where a snug-fitting lid is necessary ... for tool chests, and many other applications where tightness in a hinged cover is desirable.

Chicago's new Draw-Tight Cam has a carefully engineered radius that exerts a positive drawing force as it engages the catch. This assures a "tight-squeeze" con-

tact between the lid and the body. Made of sturdy steel, cadmium plated.

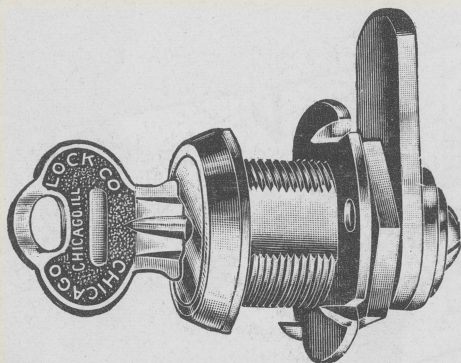
To meet practically every requirement, the following Chicago Cylinder Locks may be equipped with Draw-Tight Cams:

Double Bitted No.	Single Bitted No.	Ace Locks No.
1801	1701	4152
2221	3319	4153
2234	3795	4160
2306	3786	
2430		
3118		
3171		
3174		
3205		

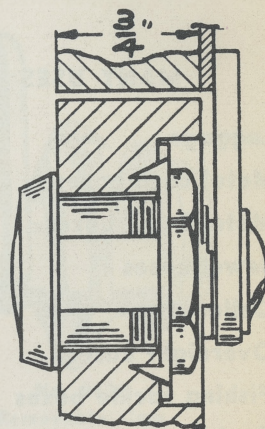
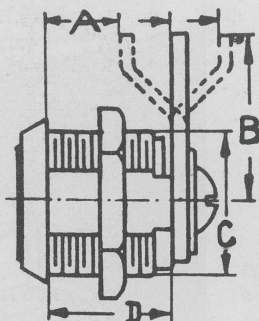
Consult our engineers for ideas and suggestions how Chicago Locks and Chicago's new Draw-Tight Cam will fit your particular problem. No cost or obligation.



CHICAGO DOUBLE BITTED LOCKS FOR CABINETS — DOORS — WOOD PANELS



No. 1801



**Sketch Showing
Installation**

Easily installed by boring $\frac{3}{4}$ " hole. The counterbore shown on inside of panel allows clearance for anchor washer and hex. nut.

Cylinder Cast. $\frac{3}{4}$ " threaded diameter. Size of head 1" diameter.

Finish Polished nickel.

Cam Steel— $\frac{3}{4}$ " x $\frac{1}{8}$ ".

Mechanism Unit eleven blade tumbler assembly. Double action brass tumblers encased in brass frame.

**Cam, Hex. Nut and
Anchor Washer** Steel cadmium plated.

Keys Two milled brass keys per lock. When locks are ordered keyed alike, only one key is furnished per lock. 250 different key changes regularly furnished. Can be furnished keyed alike, or alike in sets if specified.

Operation Regularly furnished 90 degree turn, key withdrawing only in locked position. Can also be furnished 180 degree turn, key withdrawing in both locked and unlocked position, if specified.

Safety Locking Bar ... These locks can be furnished with special safety locking bar, described on page 10, for installations where extra security is desired.

SPECIFICATIONS

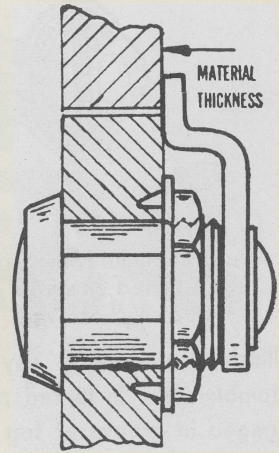
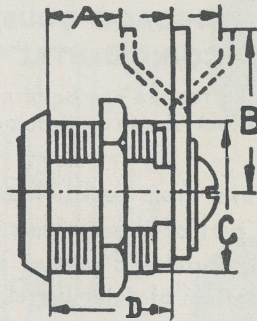
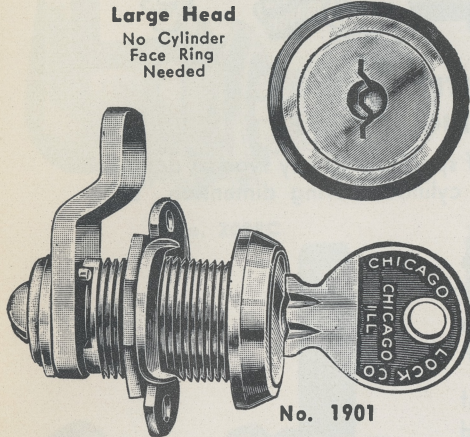
Catalog Number	For Wood Thickness using Straight Cam	A	B	C	D	Cam	Net Weight Per Dozen
1801	$\frac{3}{4}$ "	$\frac{13}{16}$ "	$1\frac{1}{8}$ "	$\frac{3}{4}$ "	$\frac{13}{16}$ "	Removable	2 lbs. 4 ozs.
1802	1"	$1\frac{1}{16}$ "	$1\frac{1}{8}$ "	$\frac{3}{4}$ "	$1\frac{1}{16}$ "	Removable	2 lbs. 10 ozs.
1802-100	$1\frac{1}{16}$ "	$1\frac{1}{8}$ "	$1\frac{1}{8}$ "	$\frac{3}{4}$ "	$1\frac{1}{8}$ "	Removable	2 lbs. 11 ozs.
1803	$1\frac{1}{8}$ "	$\frac{13}{16}$ "	$1\frac{1}{8}$ "	$\frac{3}{4}$ "	$\frac{13}{16}$ "	Removable	2 lbs. 13 ozs.
1803-100	$1\frac{1}{4}$ "	$\frac{15}{16}$ "	$1\frac{1}{8}$ "	$\frac{3}{4}$ "	$\frac{15}{16}$ "	Removable	2 lbs. 14 ozs.
1804	$1\frac{7}{16}$ "	$1\frac{1}{2}$ "	$1\frac{1}{8}$ "	$\frac{3}{4}$ "	$1\frac{1}{2}$ "	Removable	3 lbs.

CHICAGO DOUBLE BITTED LOCKS

GENERAL UTILITY

FOR DESKS, CUPBOARDS, WARDROBES, ETC.

Illustrations Actual Size



Sketch Showing Installation
Easily Installed by Simply Boring
3/4-inch Hole. No Counterbore
Necessary.

CylinderCast. 3/4" threaded diameter. Size of head 1".

FinishPolished nickel.

CamSteel—3/4" x 1/8".

MechanismUnit eleven blade tumbler assembly. Double action brass tumblers, encased in brass frame.

Cam, Hex. Nut and Wood AnchorSteel, cadmium plated.

KeysTwo milled brass keys per lock. When locks are ordered keyed alike, only one key is furnished per lock. 250 different key changes regularly furnished. Can be furnished keyed alike, or alike in sets if specified.

OperationKeys removable in both locked and unlocked position—180 degree turn. Can be furnished with key withdrawing only in locked position—90 degree turn, if specified.

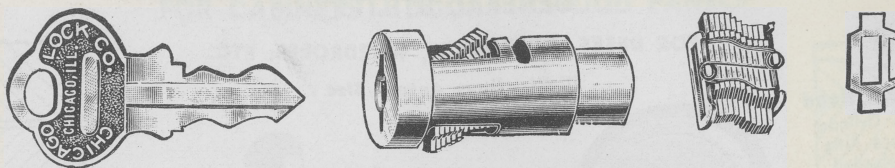
Safety Locking Bar...If specified, these locks can be furnished with safety locking bar described on page 10.

Special FeaturesCan be furnished with different off-set cams to give any "A" dimension desired, and dimension "B" can be furnished to any length specified for special installations.

SPECIFICATIONS

Catalog Number	For Wood Thickness	A	B	C	D	Cam	Net Weight Per Dozen
1901	1/2"	1/2"	1 1/8"	3/4"	13/16"	Removable	2 lbs. 4 ozs.
1902	3/4"	3/4"	1 1/8"	3/4"	1 1/16"	Removable	2 lbs. 10 ozs.
1903	7/8"	7/8"	1 1/8"	3/4"	1 3/16"	Removable	2 lbs. 13 ozs.
1904	1 1/8"	1 1/8"	1 1/8"	3/4"	1 1/2"	Removable	3 lbs.

CHICAGO DOUBLE BITTED LOCKS DOUBLE BITTED KEY AND TUMBLER ASSEMBLY



CHICAGO DOUBLE BITTED SPECIAL COINCIDENTAL LOCKING FEATURE

Special coincidental locking feature can be furnished if specified on any type of double bitted brass or die cast lock shown in catalog with cylinder having dimension "D" of $\frac{3}{4}$ " or over.

Illustration showing key withdrawn from lock. The eleven tumblers are in locked position, part of the tumblers are engaged in groove at top of outer barrel and part of tumblers engaged in opposite groove at bottom of outer barrel.

The illustration also shows a heavy steel locking bar, held against the back of the tumbler assembly by a strong spring, each end of the locking bar is engaged in the tumbler grooves in outer barrel.

The added security of the steel locking bar working concurrently with the eleven tumblers makes this special feature very desirable where good lock protection is required. This additional steel locking bar also gives added strength to the locking plug, making it practically impossible to turn the plug with any instrument or tool other than the proper key.

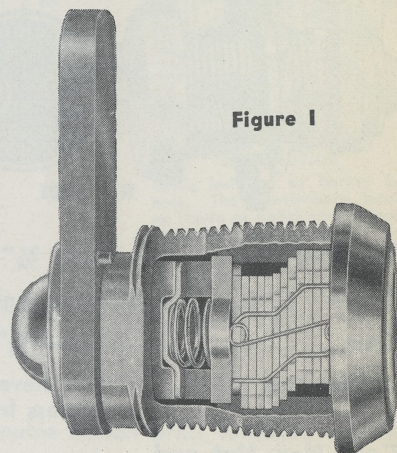


Figure 1

Illustration of a sectional view of lock with individual key inserted. The manual operation of inserting key places the eleven tumblers in position to coincide with the diameter of the plug. The special steel locking bar has been moved by the point of the key, the proper distance toward the back of the lock to clear the tumbler grooves, in outer barrel, and is free to turn in a counterbore provided in outer barrel. The plug unit consisting of the key, tumblers and special locking bar, can only be turned to operate locking cam at back of lock by the insertion of the proper key.

Each tumbler bears directly on the two opposite bittings of the key and is cammed to proper position when key is inserted. For this reason the tumblers are not dependent on small springs to hold them against the key in order for lock to operate, as is the case in single bitted type locks.

As the tumblers and special steel locking bar are manually operated by the insertion of key, the smooth operation of these parts is not affected by frost, dust or unfavorable climatic conditions.

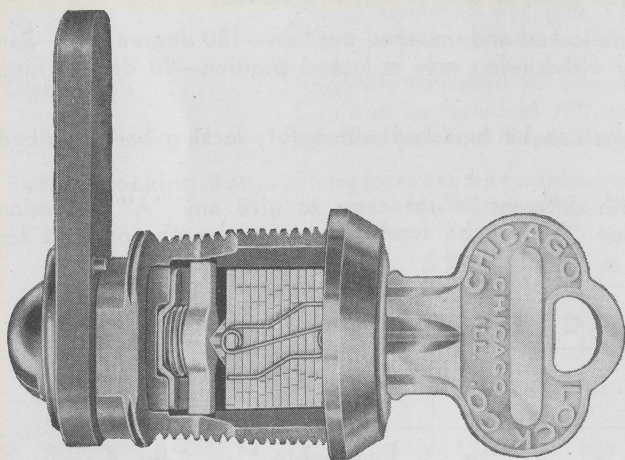
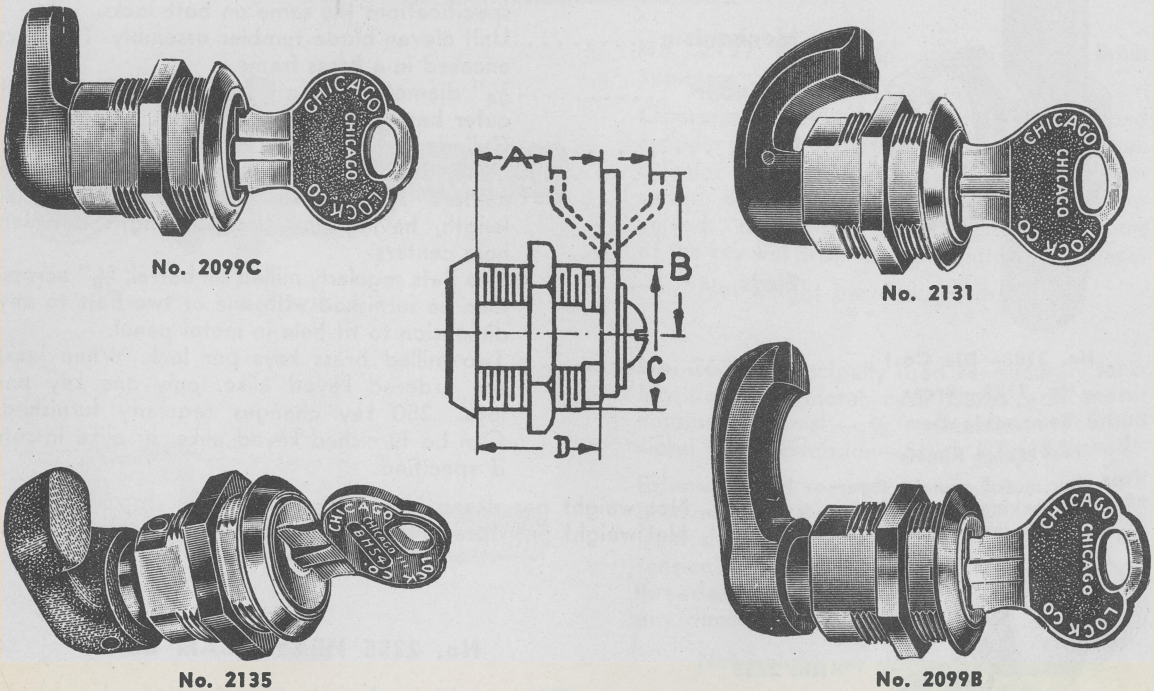


Figure 2

CHICAGO DOUBLE BITTED LOCKS
BRASS CAM LOCKS
For Metal or Counterbored Wood Panels



Illustrations Actual Size

Cylinder— $\frac{3}{4}$ " diameter. 11 double action brass tumblers.

Furnished with hexagon nut to make perfect adjustment. One flat side regularly furnished. If 2 flats are required same can be furnished if so specified.

BOLT OR CAM—Solid Brass securely fastened to cylinder.

MATERIAL—All Brass.

OPERATION—Keys removable only when in locked position. Can be furnished with keys removable in both locked and unlocked position when so specified.

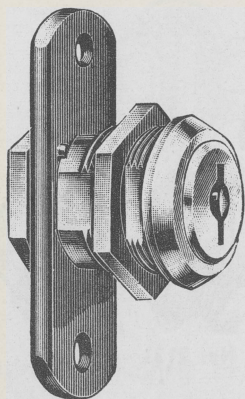
FINISH—Face polished Nickel.

KEYS—Two milled brass keys per lock.

SPECIFICATIONS

Catalog Number	A	B	C	D	Net Weight Per Dozen
2099C	$\frac{13}{16}$ "	$\frac{3}{4}$ "	$\frac{3}{4}$ "	$\frac{11}{16}$ "	2 lbs.
2135	$\frac{11}{16}$ "	$\frac{15}{16}$ "	$\frac{3}{4}$ "	$\frac{11}{16}$ "	2 lbs. 4 ozs.
2131	$\frac{3}{8}$ "	$\frac{7}{8}$ "	$\frac{3}{4}$ "	$\frac{11}{16}$ "	2 lbs. 1 oz.
2099B	$\frac{11}{8}$ "	$1\frac{1}{4}$ "	$\frac{3}{4}$ "	$\frac{11}{16}$ "	2 lbs. 4 ozs.

CHICAGO DOUBLE BITTED LOCKS CABINET LOCKS

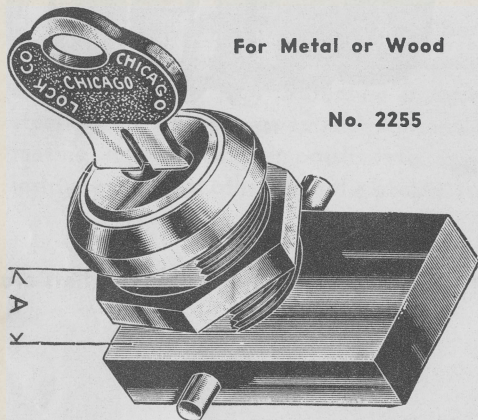


No. 3188—Die Cast
No. 3189—Brass
Removable Cam
For Metal Panels

Used for metal panel. Operates two locking bars—locking at top and bottom of door.

- Material** Lock No. 3188 die cast plug and barrel. Lock No. 3189 brass plug and barrel. All other specifications the same on both locks.
- Mechanism** Unit eleven blade tumbler assembly. Tumblers encased in a brass frame.
- Cylinder** $\frac{3}{4}$ " diameter. Length from under shoulder of outer barrel to locking cam $\frac{5}{8}$ ".
- Finish** Cylinder face polished nickel.
- Cam** Steel, double throw. Distance between hole centers $1\frac{9}{16}$ ". Also furnished with special length, having any desired length between hole centers.
- Flats** Two flats regularly milled on barrel, $\frac{5}{8}$ " across. Can be furnished with one or two flats to any dimension to fit hole in metal panel.
- Keys** Two milled brass keys per lock. When locks are ordered keyed alike, only one key per lock. 250 key changes regularly furnished. Can be furnished keyed alike, or alike in sets if specified.

Net weight per dozen No. 3188 Lock—2 lbs. 1 oz.
Net weight per dozen No. 3189 Lock—2 lbs. 4 ozs.



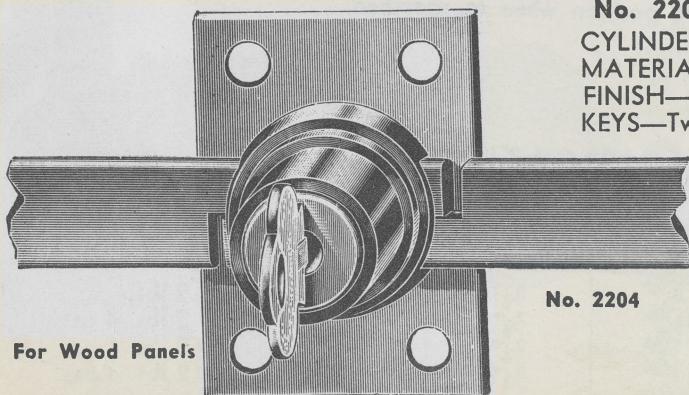
For Metal or Wood

No. 2255

Heavy Cam Lock Cylinder, $\frac{3}{4}$ Diameter

No. 2255 HEAVY CAM LOCK

This model is equipped with extra heavy brass locking cam securely held to the plug with a taper pin. For installation the cam is removed from the lock and replaced after the lock is in the panel. The taper pin makes this operation simple and quick. Can be used on metal or wood cabinets. When ordering, specify "A" dimension wanted.



No. 2204

For Wood Panels

No. 2204—DOUBLE THROW BOLT LOCK

CYLINDER— $\frac{3}{4}$ " Diameter and Projects $\frac{7}{8}$ ".

MATERIAL—Die cast cylinder.

FINISH—Cylinder face, Polished Nickel.

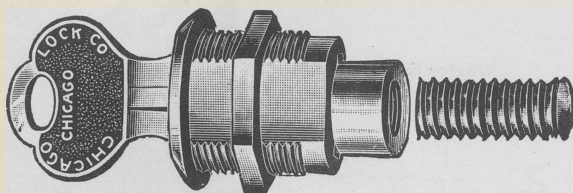
KEYS—Two milled brass with each lock. 250 different key changes regularly furnished.

*Illustrations
Actual Size*

CHICAGO DOUBLE BITTED LOCKS

SCREW TYPE LOCKS

The principle introduced into these locks is entirely new in its application, giving great security in many peculiar installation problems.

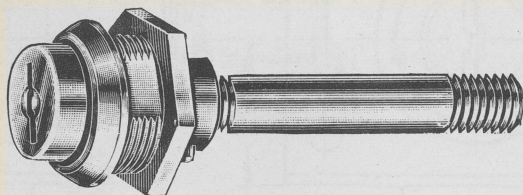


No. 2137

No. 2137 Barrel— $\frac{3}{4}$ " diameter. 11 Brass Tumblers.

Operation—Key plug is extended beyond cylinder $\frac{5}{8}$ " and tapped to take Stud. When cylinder is anchored to panel and key is inserted the key plug can be completely revolved. About two or three complete turns of the key will draw the door tightly into place.

Net weight per dozen 1 lb. 12 ozs.

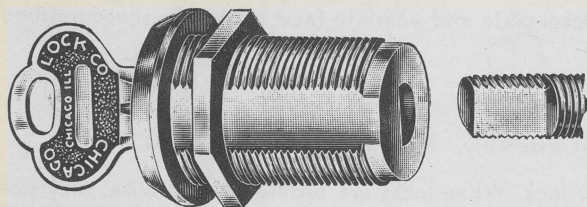


No. 2625

No. 2625—Principally used for securely locking doors in metal cash boxes and meter housings. Barrel— $\frac{3}{4}$ " diameter. Polished nickel finish. Extension—Steel $\frac{5}{8}$ " x 18 threads.

Extension held securely to revolving plug with grooved pin. Regularly furnished with length from shoulder of outer barrel to end of extension $2\frac{1}{8}$ ". The length and diameter of threaded extension can be changed to give any dimension required.

Net weight per dozen 1 lb. 15 ozs.



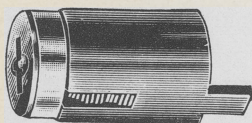
No. 3274

No. 3274—The threaded rod is anchored to base of machine but should be allowed to turn with lock and cover. The flat on threaded rod corresponds to "D" shaped hole in back of barrel. The revolving plug has tapped hole allowing plug to be turned by key. Two or three complete revolutions of keys will draw the door tightly in place. The barrel has flat milled to conform with flat in hole in cover. The cover lock, barrel and threaded steel extension can be turned as a unit without unscrewing lock from threaded extension.

No. 3274—Plug tapped $\frac{5}{16}$ "—18 threads.

No. 3274-30—Same as No. 3274 except plug is tapped $\frac{1}{4}$ "—20 threads.

Net weight per dozen 1 lb. 11 ozs.



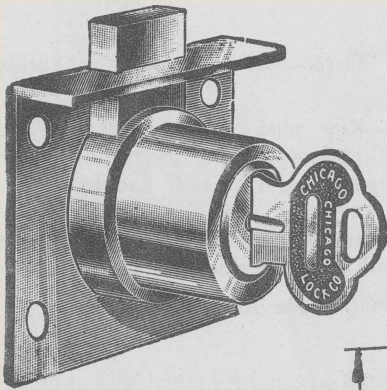
No. 3177-15

No. 3177-15—For use in cast metal covers. Sleeve—Brass. $\frac{5}{8}$ " diameter x $\frac{3}{4}$ " long. Operation—Cylinder is assembled in a $\frac{5}{8}$ " hole, cored or machined in a metal cover. A shoulder at bottom of cored hole supports lock sleeve. Lug at end of sleeve is formed or riveted after being assembled to cover.

Net weight per dozen 1 lb. 2 ozs.

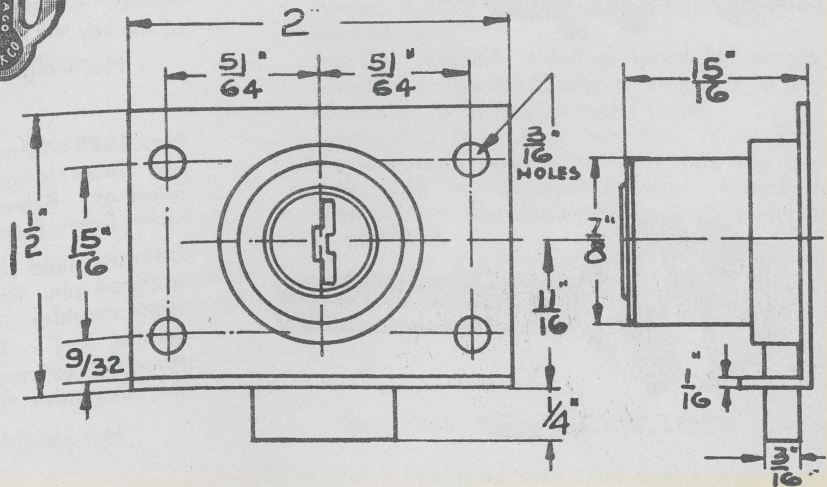
Illustrations Actual Size

CHICAGO DOUBLE BITTED LOCKS
FOR WOOD OR METAL PANELS
ALL BRASS



No. 551-11

Illustration Actual Size



Cylinder Brass, solid round box. Nickel plate and polish to face. Other finishes furnished at additional price.

Bolt Brass, $\frac{5}{8}$ " x $\frac{3}{16}$ ". Throw $\frac{1}{4}$ ".

Mechanism Eleven blade tumbler unit assembly. Tumblers encased in brass frame.

Keys Two milled brass keys per lock. When locks are ordered keyed alike, only one key is furnished per lock. 250 different key changes regularly furnished. Can be furnished keyed alike, or alike in sets if specified.

Operation 180 degree turn. Key withdrawing in locked and unlocked position.

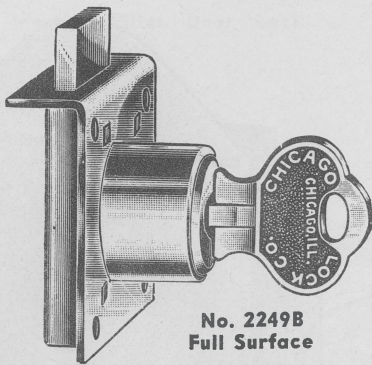
Special Features For convenience of installing, the box of lock is round. This simplifies mortising.

SPECIFICATIONS

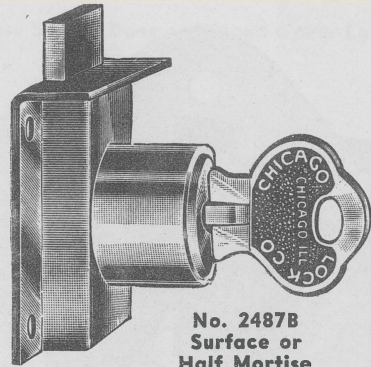
Catalog Number	Size	Selvage to Center of Cylinder	Thickness of Material	Net Weight Per Dozen
551-11	2" x 1 1/2"	3/4"	7/8"	3 lbs. 3 ozs.
551-12	2" x 1 1/2"	3/4"	1"	3 lbs. 9 ozs.
551-13	2" x 1 1/2"	3/4"	1 1/8"	4 lbs.

**CHICAGO DOUBLE BITTED LOCKS
FOR WOOD OR METAL PANELS**

Illustrations Actual Size



No. 2249B
Full Surface



No. 2487B
Surface or
Half Mortise

CYLINDER—Brass. 11 double action brass tumblers. Securely fastened to case.

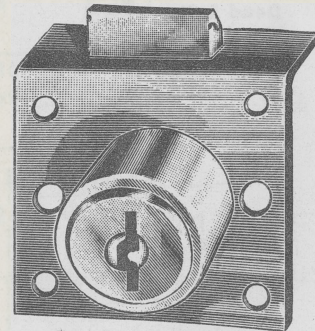
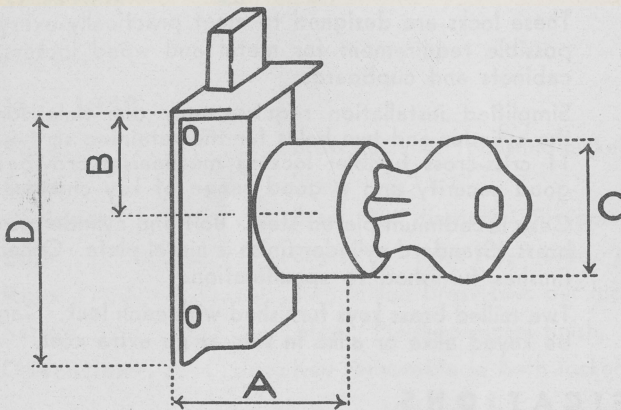
BOLT—Dead type. Standard $\frac{1}{2}$ " throw.

MATERIAL—Steel cases and bolts.

OPERATION—Keys removable in both locked and unlocked positions.

FINISH—Cylinder face polished nickel. Bolt and case cadmium plated.

KEYS—Two milled brass keys per lock. 250 key changes regularly furnished.



No. 2249-25

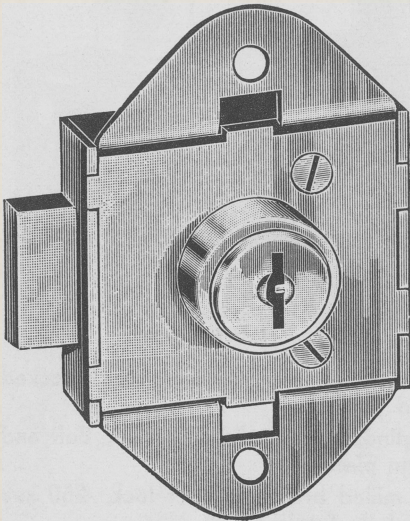
BOLT—Brass spring bolt— $\frac{1}{4}$ " throw. Other specifications same as No. 2249B-10.

Net weight per dozen—
2 lbs. 7 ozs.

SPECIFICATIONS

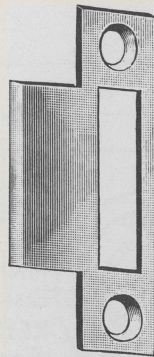
Catalog Number	For Wood A	Drop B	Size C	Size D	Size Width	Net Weight Per Dozen
2249B-9	$\frac{5}{8}$ " Thick	$\frac{11}{16}$ "	$\frac{3}{4}$ "	$1\frac{3}{8}$ "	$1\frac{3}{8}$ "	2 lbs. 4 ozs.
2249B-10	$\frac{3}{4}$ " "	$\frac{11}{16}$ "	$\frac{3}{4}$ "	$1\frac{3}{8}$ "	$1\frac{3}{8}$ "	2 lbs. 7 ozs.
2249B-11	$\frac{7}{8}$ " "	$\frac{11}{16}$ "	$\frac{3}{4}$ "	$1\frac{3}{8}$ "	$1\frac{3}{8}$ "	2 lbs. 10 ozs.
2249B-13	$1\frac{1}{8}$ " "	$\frac{11}{16}$ "	$\frac{3}{4}$ "	$1\frac{3}{8}$ "	$1\frac{3}{8}$ "	3 lbs.
2487B-11	$\frac{7}{8}$ " "	$\frac{11}{16}$ "	$\frac{3}{4}$ "	$1\frac{3}{8}$ "	$1\frac{3}{8}$ "	2 lbs. 3 ozs.
2487B-13	$1\frac{1}{8}$ " "	$\frac{11}{16}$ "	$\frac{3}{4}$ "	$1\frac{3}{8}$ "	$1\frac{3}{8}$ "	2 lbs. 10 ozs.

CHICAGO DOUBLE BITTED LOCKS
FOR LOCKERS, CABINETS AND CUPBOARDS
Full Surface Mounting on Metal or Wood

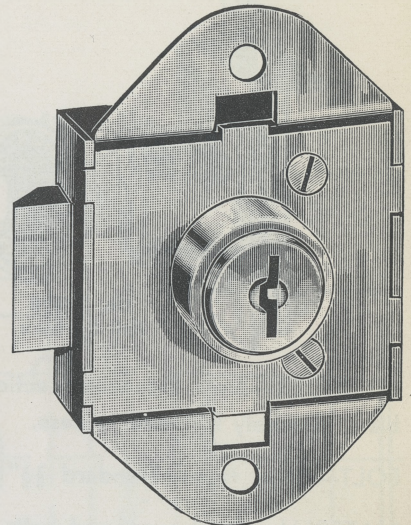


No. 523
Dead Bolt

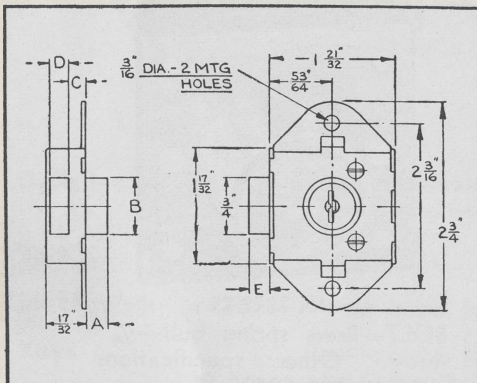
Illustrations
Actual Size



No. 860-15
Strike Plate



No. 524
Spring Bolt



These locks are designed to meet practically every possible requirement for metal and wood lockers, cabinets and cupboards.

Simplified installation requires only one hole for the cylinder and two holes for the retaining screws. 11 criss-cross tumbler locking mechanism provides good security and a good range of key changes.

Case is cadmium plated steel. Bolt and cylinder are brass. Standard cylinder finish is nickel plate. Other finishes furnished to specification.

Two milled brass keys furnished with each lock. Can be keyed alike or alike in sets at no extra cost.

SPECIFICATIONS

Catalog No.		Cylinder		Bolt		(C)	Net Weight Per Dozen (lbs.)
Dead Bolt	Spring Bolt	Dia. † (B)	Length (A)	Thick (D)	Throw (E)		
523	524*	3/4"	9/32"	1/4"	5/16"	7/32"	3
525	526*	3/4"	13/16"	1/4"	5/16"	7/32"	3 3/4
527	528*	3/4"	15/16"	1/4"	5/16"	7/32"	4 1/8
529	530*	7/8"	1 1/16"	9/32"	9/32"	3/16"	4 7/8
531	532*	3/4"	1 1/16"	1/4"	5/16"	7/32"	4 1/2

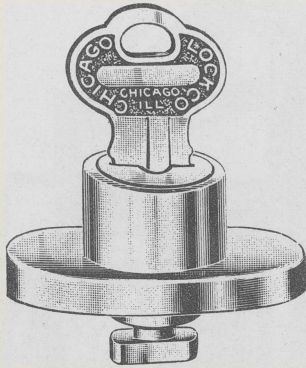
*Furnished with No. 860-15 Strike Plate and two mounting screws when specified. Add 3/4 lb. to net weight per dozen.

†Furnished to larger diameters and other lengths if specified.

CHICAGO DOUBLE BITTED LOCKS

Illustrations Actual Size

No. 3326 FILING CABINET LOCK



No. 3326

Designed for use in specially built steel filing cabinets.

Case $1\frac{3}{8}$ " x 1".

Material Die cast.

Finish Polished nickel plate.

Keys Two milled brass keys per lock.

Purpose For use on filing cabinets where it is desired to lock all the drawers in a tier by means of a removable vertical steel bar applied to the outer face of the cabinet.

Net weight per dozen— $1\frac{1}{16}$ lbs.

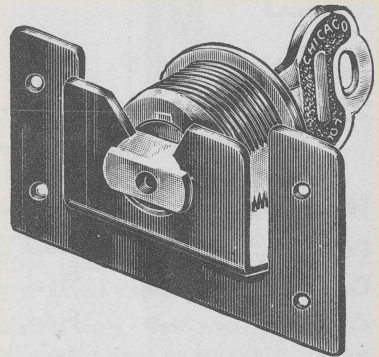
No. 3265 FILE BOX LOCK

Cylinder $\frac{3}{4}$ " diameter—polished nickel plate.

Locking Plate Not furnished. Illustrated to show locking principle only.

Keys Two milled brass keys per lock.

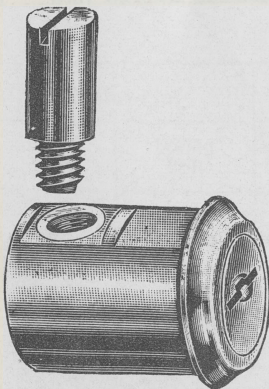
Operation Cylinder lock is installed in cover. Locking plate is secured to base. By turning key 90 degrees to locked position, back of revolving plug locks securely into locking plate.



No. 3265

Net weight per dozen— $1\frac{1}{8}$ lbs.

No. 217 PILLAR LOCK



No. 217

Cylinder Brass, $\frac{7}{8}$ " diameter. 1" long from under head to end. $\frac{5}{8}$ " from under head to center of bolt hole.

Bolt Steel, $\frac{3}{8}$ " diameter x $\frac{5}{8}$ " long from top to shoulder.

Installation Bore hole in face of pillar and insert cylinder. Bore hole in edge of pillar and screw bolt into cylinder bolt.

Operation Turning key throws bolt into edge of door. Bolt throws $\frac{3}{8}$ "

Net weight per dozen— $2\frac{5}{8}$ lbs.

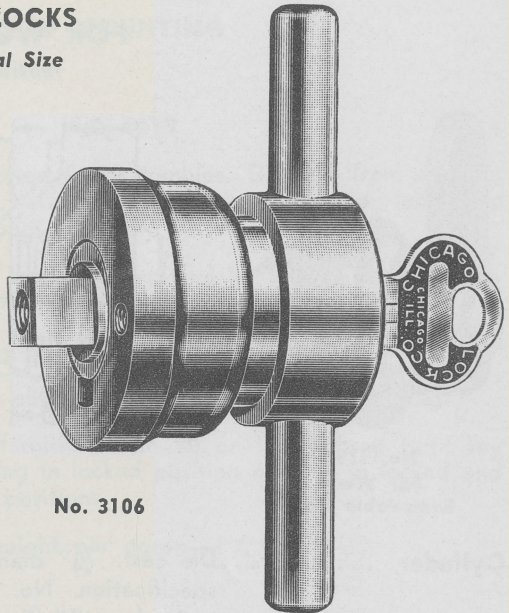
CHICAGO DOUBLE BITTED LOCKS

SWITCH BOX LOCKS

Illustrations Actual Size

No. 3106 SWITCH BOX LOCK

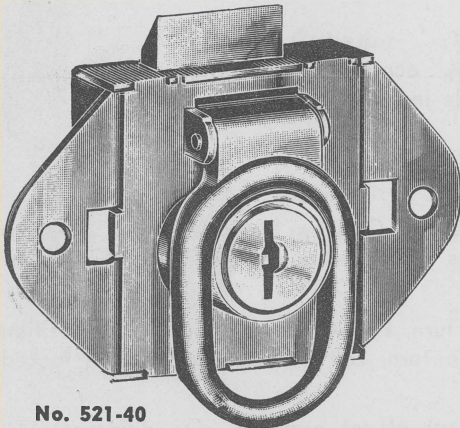
- Case** Solid brass with 2 screw holes tapped to allow attaching to panel.
- Lever and Head** Solid brass, attached to Connector.
- Connector** Brass, tapped for connecting rod retainer screw.
- Operation** When locked, handle is rigid. When unlocked, handle turns to throw locking bolt furnished by you.
- Finish** Polished nickel. Other finishes to specification.
- Keys** Two milled brass keys per lock.
- Net weight per dozen—77/8 lbs.



No. 3106

No. 521-40 SWITCH BOX LOCK

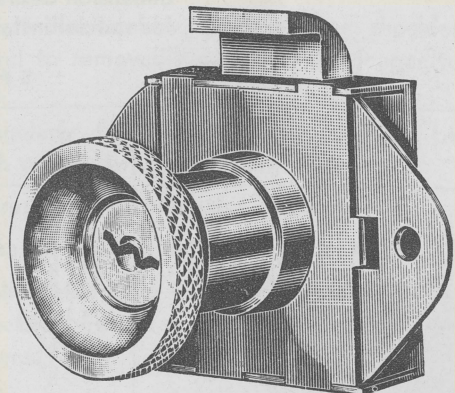
- Case** 1 1/2" x 1 5/8". Width over wings—2 3/4".
- Cylinder** 3/4" diameter. Selvege to center of cylinder—7/8".
- Bolt** Beveled spring bolt—3/4" x 1 3/64" x 9/32" throw. Distance from face of case to top of bolt—5/16".
- Material** Cadmium plated steel case. Brass bolt and cylinder.
- Finish** Polished nickel. Other finishes to specification.
- Keys** Two milled brass keys per lock.
- The handle operates the spring bolt when the lock is unlocked. Handle removes easily for installation.
- Net weight per dozen—5 1/4 lbs.



No. 521-40

No. 521-15 SWITCH BOX LOCK

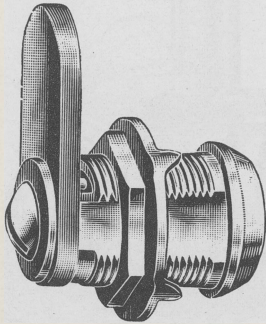
- Case** 1 1/2" x 1 5/8". Width over wings 2 3/4".
- Cylinder** 3/4" diameter. Selvege to center of cylinder—7/8".
- Bolt** Spring action hook bolt—3/4" wide. Projects 1/4" from selvege to inside of hook.
- Material** Cadmium plated steel case. Brass bolt and cylinder.
- Finish** Polished nickel. Other finishes to specification.
- Keys** Two milled brass keys per lock.
- The knurled ring acts as a pull and operates the bolt when unlocked. Ring removes easily for installation.
- Net weight per dozen—5 1/4 lbs.



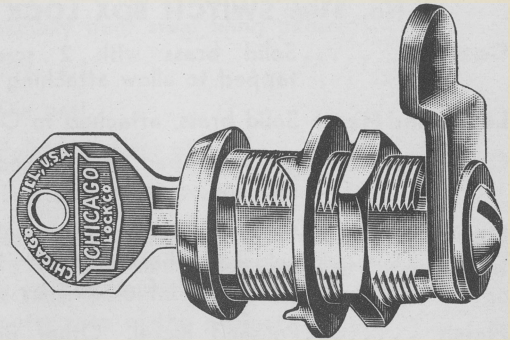
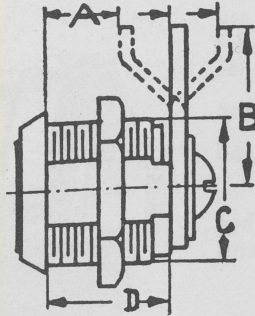
No. 521-15

CHICAGO SINGLE BITTED LOCKS FOR WOOD MOUNTING

Illustrations Actual Size



No. 3795
For Wood
Removable Cam



No. 1702-100
For Wood
Removable Cam

Cylinder Die cast, $\frac{3}{4}$ " diameter. Polished nickel finish. Other finishes furnished to specification. No. 3795 has $\frac{7}{8}$ " diameter head, while all of the No. 1700 series have 1" diameter heads.

Mechanism 5 disc tumblers.

Flats Two flats regularly milled on barrel $\frac{5}{8}$ " across. Can be furnished with one or two flats to any dimension to fit hole in metal panel.

Cam and Hex. Nut Steel, cadmium plated.

Keys Two milled brass keys per lock.

Key Changes Various key changes regularly furnished. Can be furnished keyed alike, or alike in sets if specified. When locks are ordered keyed alike, only one key is furnished per lock.

Operation Regularly furnished with 90 degree turn, key withdrawing in locked position only. Can be furnished 180 degree turn, key withdrawing in both locked and unlocked position.

Special Feature Locks can be furnished with different off-set cams to give different "A" dimension desired, and dimension "B" can be furnished to any length specified for special installations.

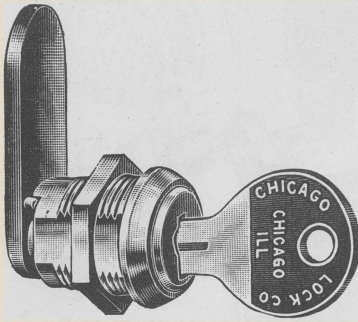
SPECIFICATIONS

Catalog Number	A	B	C	D	Cam	Net Weight Per Dozen
3795	$\frac{13}{16}$ "	$1\frac{1}{8}$ "	$\frac{3}{4}$ "	$\frac{13}{16}$ "	Removable	2 lbs. 3 oz.
1701	$\frac{13}{16}$ "	$1\frac{1}{8}$ "	$\frac{3}{4}$ "	$\frac{13}{16}$ "	Removable	2 lbs. 4 oz.
1702	$1\frac{1}{16}$ "	$1\frac{1}{8}$ "	$\frac{3}{4}$ "	$1\frac{1}{16}$ "	Removable	2 lbs. 10 oz.
1702-100	$1\frac{1}{8}$ "	$1\frac{1}{8}$ "	$\frac{3}{4}$ "	$1\frac{1}{8}$ "	Removable	2 lbs. 11 oz.
1703	$\frac{13}{16}$ "	$1\frac{1}{8}$ "	$\frac{3}{4}$ "	$\frac{15}{16}$ "	Removable	2 lbs. 13 oz.
1703-100	$\frac{15}{16}$ "	$1\frac{1}{8}$ "	$\frac{3}{4}$ "	$1\frac{5}{16}$ "	Removable	2 lbs. 14 oz.
1704	$1\frac{1}{2}$ "	$1\frac{1}{8}$ "	$\frac{3}{4}$ "	$1\frac{1}{2}$ "	Removable	3 lbs.

CHICAGO SINGLE BITTED LOCKS FOR METAL AND THIN WOOD MOUNTING

Illustrations Actual Size

No. 3319



No. 3319—Fixed Cam Lock

Cylinder ... $\frac{3}{4}$ " diameter; 5 disc tumbler. Distance from shoulder of outer barrel to riveted cam $\frac{5}{8}$ "—or longer to specifications.

Flats Two flats regularly furnished $\frac{5}{8}$ " across. Can be furnished with one or two flats to any dimension.

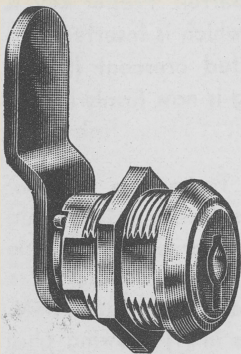
Keys Two milled brass keys regularly furnished per lock.

Keying Various, alike, or alike in sets to specifications.

Operation .Can be furnished with 90 or 180 degree turn; key withdrawing in locked position only, or in locked and unlocked positions.

Net weight per dozen— $1\frac{3}{4}$ lbs.

No. 3319-50



No. 3319-50
Fixed Cam Lock

Cylinder ... $\frac{3}{4}$ " diameter; 5 disc tumbler. Distance from shoulder of outer barrel to riveted cam $\frac{2}{3}$ "—or longer to specifications.

Flats Two flats regularly furnished $\frac{5}{8}$ " across. Can be furnished with one or two flats to any dimension.

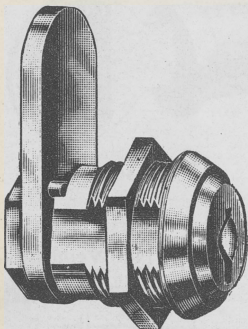
Keys Two milled brass keys regularly furnished per lock.

Keying Various, alike, or alike in sets to specifications.

Operation .Can be furnished with 90 or 180 degree turn; key withdrawing in locked position only, or in locked and unlocked positions.

Net weight per dozen— $1\frac{3}{4}$ lbs.

No. 3786



No. 3786
Removable Cam Lock

Cylinder ... $\frac{3}{4}$ " diameter; 5 disc tumbler. Distance from shoulder of outer barrel to removable cam $\frac{5}{8}$ "—or longer to specifications.

Flats Two flats regularly furnished $\frac{5}{8}$ " across. Can be furnished with one or two flats to any dimension.

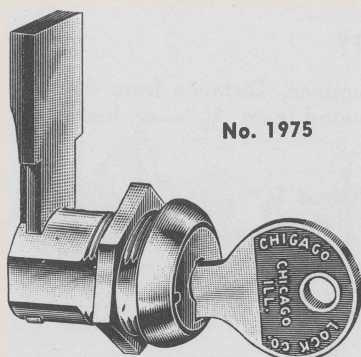
Keys Two milled brass keys regularly furnished per lock.

Keying Various, alike, or alike in sets to specifications.

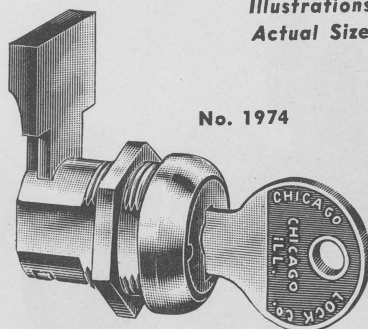
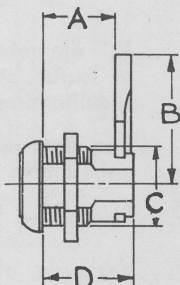
Operation .Can be furnished with 90 or 180 degree turn; key withdrawing in locked position only, or in locked and unlocked positions.

Net weight per dozen— $1\frac{7}{8}$ lbs.

CHICAGO SINGLE BITTED LOCKS
DRAWER AND DOOR LOCKS WITH REMOVABLE BOLT AND PLUG
For Mounting in Hollow Metal



No. 1975



No. 1974

Illustrations
Actual Size

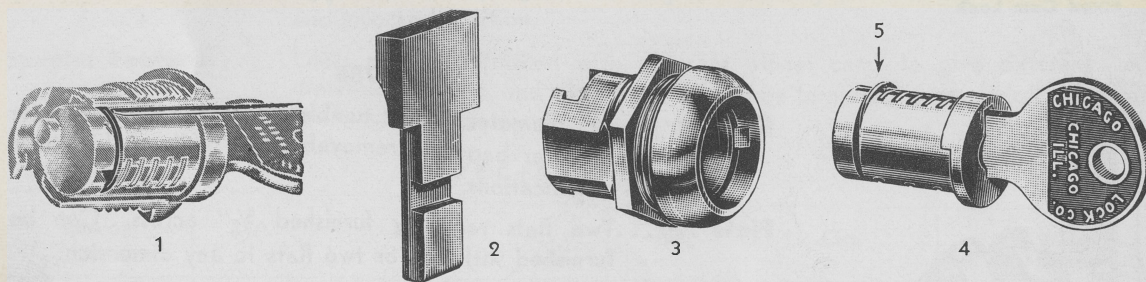
At last—for metal furniture—drawer and door locks that can be assembled or disassembled in just a few seconds. Think what that means! Manufacturers of metal desks and cabinets can now build a fully finished stock inventory in advance of orders without regard to special key series that may be specified by the dealer.

Here's how it works. While your pieces are on the production line, lock barrels only are installed. This eliminates line tie-ups caused by the necessity of installing special key combinations. Then at the time of shipment, bolts and plugs are inserted in any group combination ordered. Removal of pin trays is never necessary once barrels are installed.

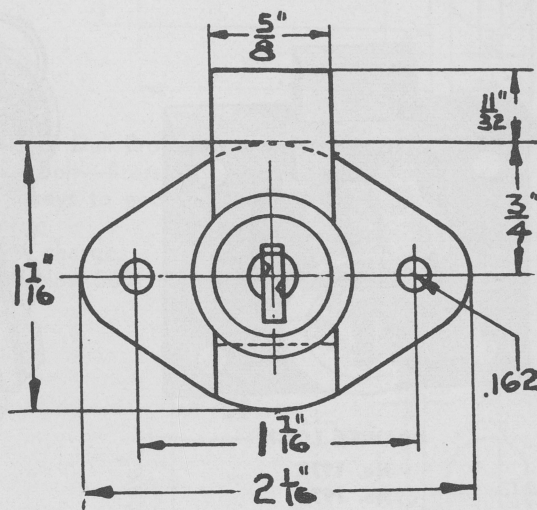
This saves money by enabling you—quickly and at low cost—to control special key combination requests, and duplicate key series previously allotted to certain dealers.

ASSEMBLY OF LOCK TO FURNITURE: Barrel (3) is assembled to drawer or door during production, and held in place with hex nut. At time of shipment or setting up key series, bolt (2) is seated in slot at back of barrel. Proper key is then inserted into plug (4), which is inserted into barrel, where spring actuated crescent (5) engages groove in barrel. Plug is now firmly locked into barrel.

DISASSEMBLY OF LOCK: To remove plug for replacement, proper key is inserted into plug (4) which is then turned 90 degrees. When hole in face of plug lines up with spline in barrel, a $\frac{1}{16}$ " diameter wire is inserted through hole. Crescent (5) is depressed as in (1) allowing plug (4) to be removed.



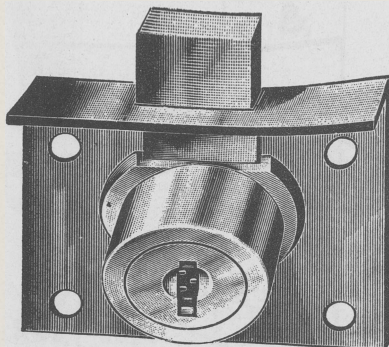
Catalog Number	A	B	C	D	Brass Bolt	Net Weight Per Dozen
1974	$19\frac{1}{32}$ "	$25\frac{1}{32}$ "	$\frac{3}{4}$ "	$53\frac{1}{64}$ "	$53\frac{1}{64}$ " x $11\frac{1}{64}$ " $11\frac{1}{32}$ " throw	$1\frac{7}{8}$ lbs.
1975	$21\frac{1}{32}$ "	$15\frac{1}{16}$ "	$\frac{3}{4}$ "	$57\frac{1}{64}$ "	$5\frac{5}{8}$ " x $5\frac{5}{32}$ " $11\frac{1}{32}$ " throw	2 lbs.



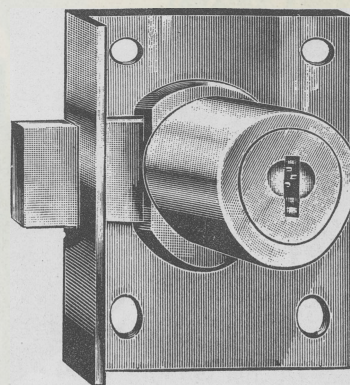
CHICAGO SINGLE BITTED LOCKS

Illustrations

Actual Size



DRAWER LOCK
No. 1970
No. 1971



CUPBOARD LOCK
No. 1972
No. 1973

State Right or Left Hand
When Ordering Above Lock

CylinderSolid cast— $\frac{7}{8}$ " diameter.

FinishDull brass. Other finishes furnished to specification.

BoltHeavy brass. $\frac{11}{32}$ " throw.

MechanismFive disc tumblers.

KeysTwo milled brass keys per lock.

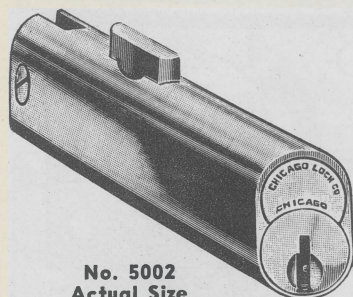
Key Changes.....Various key changes regularly furnished. Can be furnished keyed alike, or alike in sets if specified. When locks are ordered keyed alike, only one key is furnished per lock.

NoteCan also be furnished with spring bolt for $\frac{7}{8}$ " thick wood. If spring bolt is desired, specify No. 1960 for drawers—No. 1962 for cupboards.

SPECIFICATIONS

Catalog Number	Size	Selvage to Center of Cylinder	Thickness of Wood	Net Weight Per Dozen
1970	2" x 1 $\frac{1}{2}$ "	$\frac{3}{4}$ "	$\frac{7}{8}$ "	2 lbs. 8 ozs.
1971	2" x 1 $\frac{1}{2}$ "	$\frac{3}{4}$ "	1 $\frac{1}{8}$ "	3 lbs.
1972	2" x 1 $\frac{1}{2}$ "	$\frac{3}{4}$ "	$\frac{7}{8}$ "	2 lbs. 8 ozs.
1973	2" x 1 $\frac{1}{2}$ "	$\frac{3}{4}$ "	1 $\frac{1}{8}$ "	3 lbs.

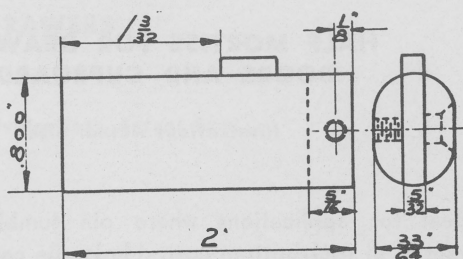
4-PIN TUMBLER FILING CABINET LOCKS



No. 5002
Actual Size

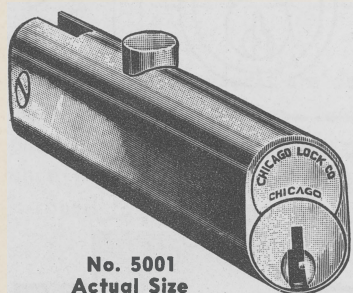


$\frac{3}{4}$ Size



Standard Finishes Available: Satin Chrome, Dull Brass or Dull Bronze.
Material: Die Cast Cylinder—Heavy Brass Rectangular Bolt—Brass Key.
Mechanism: 4-Pin Tumbler. Regularly furnished with 2 keys to each lock, various changes.
Locks can be keyed alike, alike in sets at no extra charge.
They can also be furnished masterkeyed at an additional charge.
Locks may be keyed to interchange with Chicago Lock Nos. 5001, 5001-50, 5960 and 5970.
Net Weight per Dozen— $2\frac{1}{8}$ lbs.

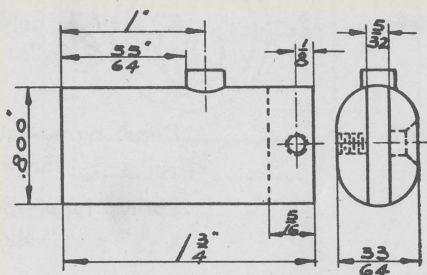
Key Blank—K-P-1



No. 5001
Actual Size

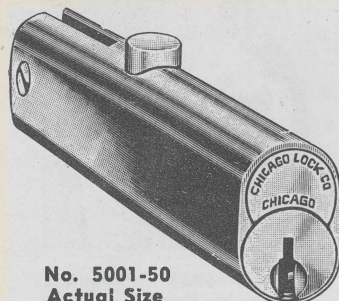


$\frac{3}{4}$ Size



Standard Finishes Available: Satin Chrome, Dull Brass or Dull Bronze.
Material: Die Cast Cylinder—Steel Round Bolt—Brass Key.
Mechanism: 4-Pin Tumbler. Regularly furnished with 2 keys to each lock, various changes.
Locks can be keyed alike, alike in sets at no extra charge.
They can also be furnished masterkeyed at an additional charge.
Locks may be keyed to interchange with Chicago Lock Nos. 5002, 5001-50, 5960 and 5970.
Net Weight per Dozen—2 lbs.

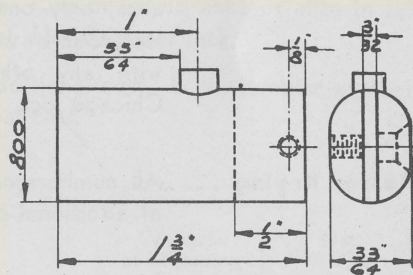
Key Blank—K-P-1



No. 5001-50
Actual Size



$\frac{3}{4}$ Size



Standard Finishes Available: Satin Chrome, Dull Brass or Dull Bronze.
Material: Die Cast Cylinder—Steel Round Bolt—Brass Key.
Mechanism: 4-Pin Tumbler. Regularly furnished with 2 keys to each lock, various changes.
Locks can be keyed alike, alike in sets at no extra charge.
They can also be furnished masterkeyed at an additional charge.
Locks may be keyed to interchange with Chicago Lock Nos. 5001, 5002, 5960 and 5970.
Net Weight per Dozen—2 lbs.

Key Blank—K-P-1

CHICAGO 4 PIN TUMBLER LOCKS

HALF MORTISE FOR DRAWERS, DOORS AND CUPBOARDS

Illustrations Actual Size

Ideal for applications where pin tumbler security is wanted at rock-bottom cost. Husky die cast cylinder and plug assure long trouble-free service. Box of lock is round to simplify mortising.

Cylinder Die cast, $\frac{7}{8}$ " diameter. Polished brass finish. Other finishes to specification.

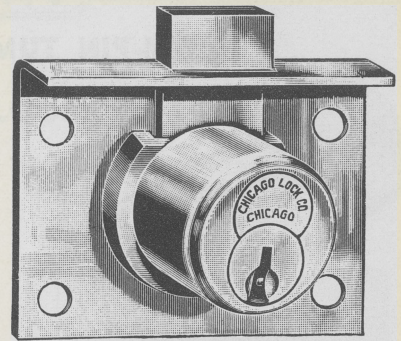
Size 2" x $1\frac{1}{2}$ ". Selvedge to center of cylinder— $\frac{3}{4}$ ".

Bolt Dead type—square brass, $\frac{5}{8}$ " x $\frac{3}{16}$ " x $\frac{5}{16}$ " throw.
Spring type—beveled brass, $\frac{5}{8}$ " x $\frac{3}{16}$ " x $\frac{5}{16}$ " throw.

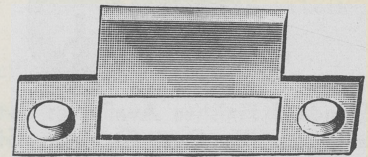
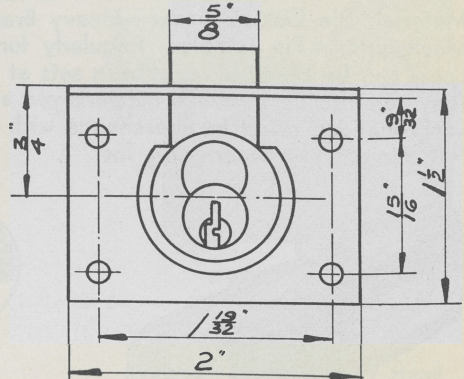
Keys Two milled brass keys regularly furnished per lock.

Keying Various key changes regularly furnished. Can be keyed alike or alike in sets if specified. If keyed alike, only one key furnished per lock. Can be keyed to interchange with any other 4 pin tumbler Chicago lock.

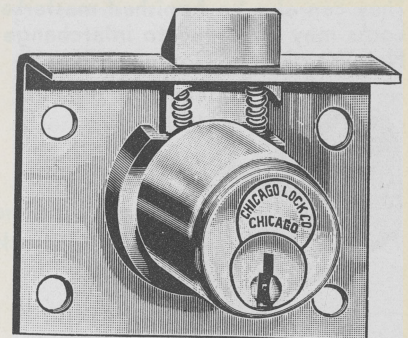
Master Keying All numbers can be master-keyed at additional cost.



**No. 5970
Drawer Type**



No. 860-15 Strike Plate



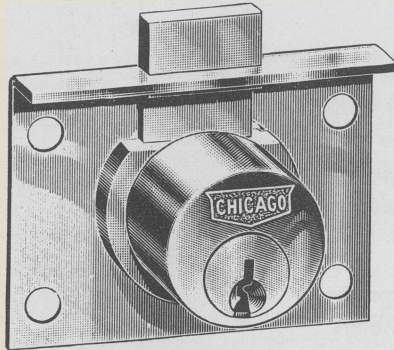
**No. 5960
Drawer Type**

SPECIFICATIONS

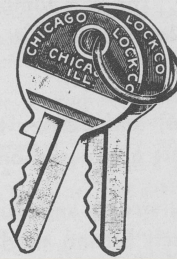
Catalog No.		Type of Use	Thickness of Mounting Material	Net Weight Per Dozen
Spring Bolt*	Dead Bolt			
5960	5970	Drawer	$\frac{7}{8}$ "	$3\frac{1}{2}$ lbs.
	5972	Right Hand Cupboard	$\frac{7}{8}$ "	$3\frac{1}{2}$ lbs.
	5974	Left Hand Cupboard	$\frac{7}{8}$ "	$3\frac{1}{2}$ lbs.

*Strike Plate No. 860-15 furnished when specified.

CHICAGO ALL BRASS PIN TUMBLER LOCKS HALF MORTISE FOR DRAWERS

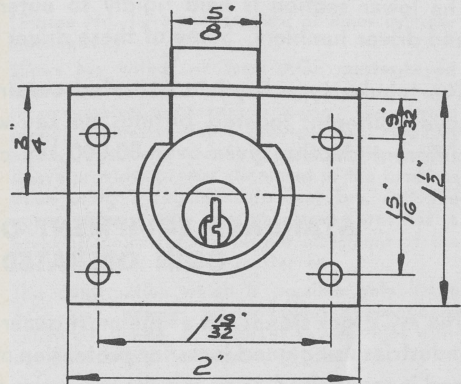


No. 5870



3/4 Size

Illustrations Actual Size



These two cabinet locks are designed to give you a choice of 4 or 5 pin tumbler security—plus all brass construction for maximum resistance to moisture and corrosion. Box of lock is round to simplify mortising for installation.

Cylinder Brass, $\frac{7}{8}$ " diameter. Polished brass finish. Other finishes to specification.

Size 2" x $1\frac{1}{2}$ ". Servedge to center of cylinder— $\frac{3}{4}$ ".

Bolt Dead type—square brass, $\frac{5}{8}$ " x $\frac{3}{16}$ " x $\frac{5}{16}$ " throw.
Spring type—beveled brass, $\frac{5}{8}$ " x $\frac{3}{16}$ " x $\frac{5}{16}$ " throw.

Keys Two milled brass keys regularly furnished per lock.

Keying Various key changes regularly furnished. Can be keyed alike or alike in sets if specified. If keyed alike, only one key furnished per lock.

Master Keying All numbers can be master-keyed at additional cost. 5 pin tumbler numbers can also be grand-mastered at additional cost.

SPECIFICATIONS

Catalog No.		Locking Mechanism	Thickness of Mounting Material	Net Weight Per Dozen
Spring Bolt*	Dead Bolt			
5860	5870	4 pin tumbler	$\frac{7}{8}$ "	$3\frac{1}{2}$ lbs.
6861	6871	5 pin tumbler	$1\frac{1}{8}$ "	$3\frac{3}{4}$ lbs.

*Strike Plate No. 860-15 furnished when specified.

CHICAGO ACE 7 PIN TUMBLER LOCKS

MECHANICAL CONSTRUCTION

The Chicago ACE 7 pin tumbler cylinder has an entirely different construction than other types of locks. The upper section carries the top tumblers and revolves with the tumblers and key. The top tumblers are of seven different lengths. The proper length tumbler is placed in its relative position in lock to correspond to bittings on key.

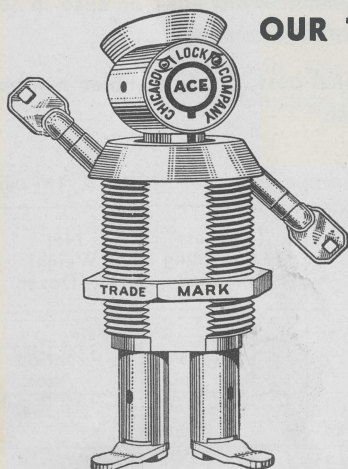
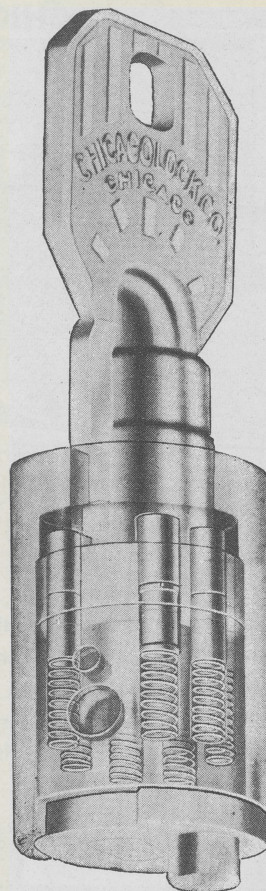
The lower section is held rigidly to outer sleeve, and carries the springs and driver tumblers. Some of these driver tumblers are mushroom tumblers.

The tubular type key is a patented construction, strong and durable. The seven different located bittings on key with each bitting made in seven different depths, gives over 80,000 key changes.

STANDARD EQUIPMENT ON MANY LEADING COIN OPERATED DEVICES

The ACE lock stands out as the most generally accepted lock in all important industries using good locks for protection of property, merchandise and cash, and is recognized as giving the maximum amount of security possible to obtain from a cylinder lock.

The mechanical principle of the ACE lock affords many desired features. When proper key is entered into lock the tumblers are manually pressed to position so that lock can be turned. This manual operation of inserting key positively places tumblers in position so that lock can be operated and insures that frost, dust, salt air or unfavorable climatic conditions will not affect the smooth operation of the lock.



OUR TRADE MARK

Symbolizing . . .

This Little Man proudly salutes you . . . his arms and hands made of the sturdy Ace ROUND Key . . . his head is made of the little Ace Lock used in many types of barrel and compartment Locks . . . his body represents the Ace Cylinder Lock, standard for doors of every type . . . and two regular Ace Lock cams attached—give him his two fine sturdy legs and feet . . . A proud Little Man is he—and justly so—for he is built entirely of Chicago Ace Locks, world-famous for their Dependable Protection and Security.

**The Chicago ACE Lock Is
Designed for, Used and Preferred
by Manufacturers of**

Locker Cabinets

Parking Meters

Musical Machines

Various Vending Machines

Gum

Cigarette

Candy

Beverage

Peanut

Novelty

**Wherever Utmost Security Is
Essential**

CHICAGO ACE LOCKS MASTER KEY MECHANISM

Enlarged Cut Open Views

The Chicago ACE 7 pin tumbler lock has a circular key way so designed that it is practically impossible to enter any tool into the key way of the lock except the proper key bitted to fit individual lock tumblers. The 7 tumblers are arranged in a circle equally spaced.

The key has 7 equally spaced bittings to correspond to the location of the tumblers. The bittings on each of the 7 locations on the key has 7 different depths possible, the proper depth depending upon the key change which also governs the length of the top tumblers.

The tumblers are manually moved to the proper position when key with bittings corresponding to the lengths of the tumblers is inserted into the lock. There is no camming action between the key and tumblers, as in ordinary pin tumbler locks, but a direct pressure of the bitted key against the top of the tumbler. This does not make the tumbler dependent upon a spring to bring it back against the biting of the key, and insures that the lock will turn freely regardless of oil, dust or frost. The springs behind the lower driver tumblers disalign the tumblers when key is withdrawn, preventing lock from turning. There is no perceptible wear on the key or tumbler as there is no resistance or friction from manual operation of entering and withdrawing the key from the lock.

A large number of variations in bittings of keys permits over 80,000 key changes.

The ACE 7 pin tumbler lock has a great capacity for master-keying, due to the internal construction of the lock mechanism.

(Figure No. 2—illustrates cylinder mechanism with individual key, inserted, aligning the lower ends of intermediate pins with breaking point at the lower side of master cylinder.)

Key can then be turned to operate lock. All of the individual keys align tumblers at this point although the individual keys will not interchange in other locks in this series due to variations in the lengths of the tumblers.

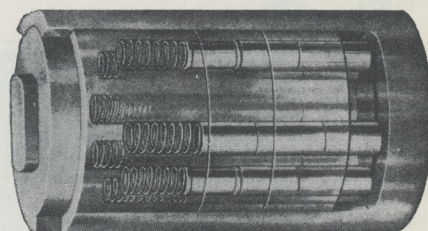


Figure 1

(Figure No. 1—a section view of inner cylinder mechanism.)

Shows key withdrawn from ACE master-keyed cylinder. In each of the 7 apertures is shown three tumblers and a driver spring. The central section or master sleeve provides two breaking points. The lower breaking point of the master sleeve provides proper alignment of the tumblers when using a regular individual key, and the upper side of the master sleeve provides a breaking point for the proper alignment of the tumblers when using a master key.

This construction which is possible only in an ACE lock, permits master-keying a practically unlimited number of different key changes without diminishing the security of the lock.

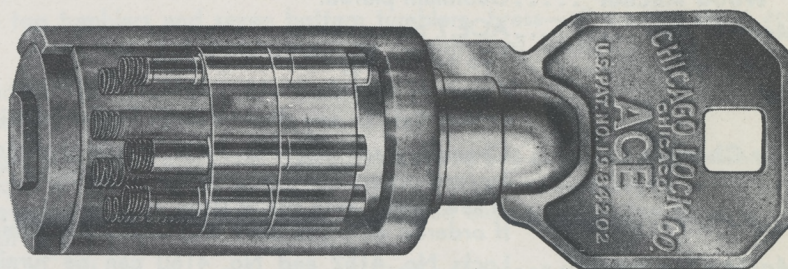


Figure 2

(Figure No. 3—shows the ACE master key inserted in lock mechanism.)

The top tumblers are brought into alignment at the top surface of master cylinder allowing the key to be turned. An unlimited number of different key changes can be operated by a single master key. By adding a fourth pin in one or more of the apertures a grand master key can be furnished to operate a series in which there are two or more sub-master keys used.

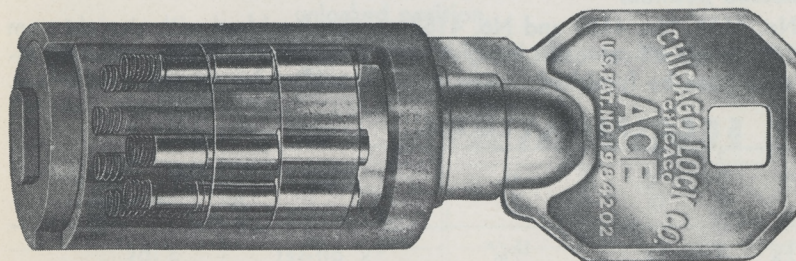
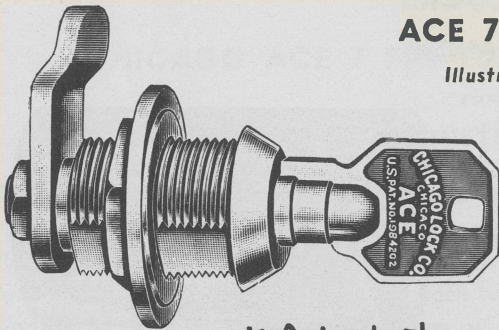


Figure 3

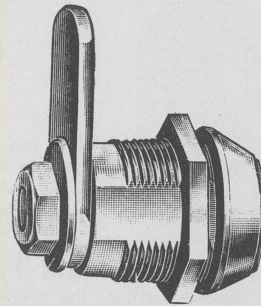
The parts in Chicago ACE lock mechanism are made accurately on fine precision machines. The keys must be cut accurately to operate the ACE lock.

CHICAGO ACE LOCKS ACE 7 PIN TUMBLER

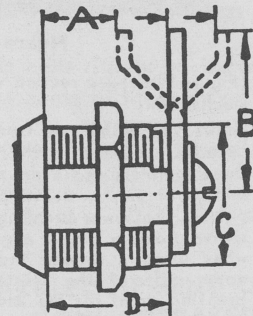
Illustrations Actual Size



**No. 4152
No. 4160**



**No. 4153
No. 4154**



Removable cam locks for wood or metal panels. Lock No. 4152 can be used on wood up to $\frac{1}{8}$ " in thickness if panel is counterbored to allow clearance for wood anchor and hex. nut. Lock No. 4160 is same in design as No. 4152 but has a longer barrel. Lock No. 4153 and No. 4154 are for metal panels, thin wood or metal cash boxes.

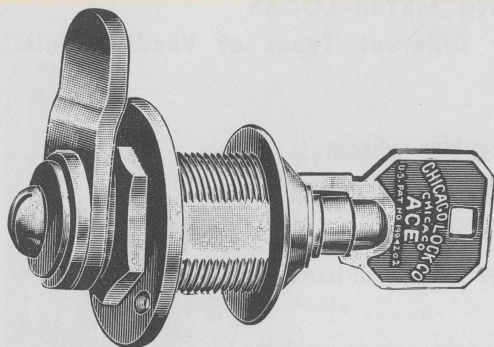
- Material** All moving parts in lock are brass. Outer threaded barrel regularly furnished of brass.
- Cam** Steel—removable type $\frac{3}{4}$ " x $\frac{1}{8}$ ".
- Cam, Hex. Nut and Wood Anchor** Cadmium plated.
- Mechanism** ACE 7 pin tumbler.
- Keys** Two tubular type embossed keys.
- Flats** Regularly furnished with two flats— $\frac{5}{8}$ " across. Can be furnished with one or two flats to any dimension to fit the hole in metal panel.
- Key Changes** Changes practically unlimited. Special registered key changes can be reserved for exclusive use of an individual customer. Locks furnished keyed alike, or in sets keyed alike if specified.
If ordered all keyed alike only one key is furnished to each lock.
- Master-Keying** Locks No. 4152 and No. 4160 can be furnished with practically unlimited number of different key changes master-keyed at extra price.
- Operation** Regularly furnished 90 degree turn, key withdrawing in locked position only. Can also be furnished with 90 degree turn, key withdrawing in both locked and unlocked position.
- Special Features** Locks No. 4152, No. 4160 and No. 4153 can be furnished with straight cam or with different off-set cams to give any "A" dimension desired, and dimension "B" can be furnished to any length specified for special installations.

SPECIFICATIONS

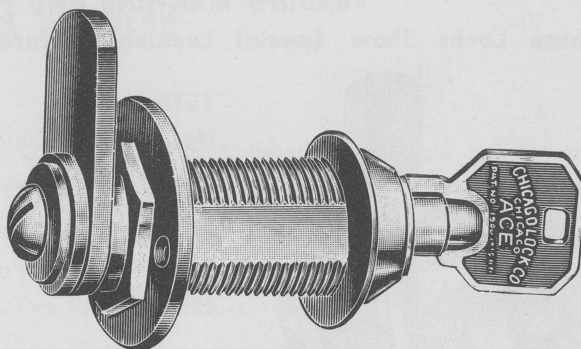
Catalog Number	A	B	C	D	Cam	Net Weight Per Dozen
4152	$\frac{13}{16}$ "	$1 \frac{1}{8}$ "	$\frac{3}{4}$ "	$\frac{15}{16}$ "	$\frac{1}{8}$ " off-set	3 lbs.
4153	$\frac{5}{8}$ "	$1 \frac{1}{16}$ "	$\frac{3}{4}$ "	$\frac{11}{16}$ "	$\frac{1}{16}$ " off-set	2 lbs. 7 ozs.
4154	$\frac{11}{16}$ "	$1 \frac{1}{16}$ "	$\frac{3}{4}$ "	$\frac{11}{16}$ "	flat	2 lbs. 7 ozs.
4160*	$1 \frac{3}{32}$ "	$1 \frac{1}{8}$ "	$\frac{3}{4}$ "	$1 \frac{3}{32}$ "	flat	3 lbs. 6 ozs.

*Can be grand-mastered at extra cost.

CHICAGO ACE LOCKS
ACE 7 PIN TUMBLER

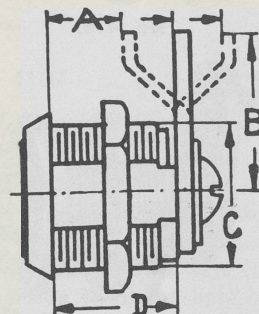


No. 4092



No. 4093

Illustrations Actual Size



Cam Removable type. Steel— $\frac{3}{4}$ " x $\frac{1}{8}$ " thick.

Cam, Hex. Nut and Wood Anchor Cadmium plated.

Material Seven top tumblers and seven bottom tumblers, brass—all moving parts are brass. Outer threaded barrel regularly furnished of brass.

Mechanism Seven pin tumblers.

Keys Two tubular type embossed keys.

Key Changes Changes practically unlimited. Special registered key changes can be reserved for exclusive use of an individual customer. Locks furnished keyed alike or in sets keyed alike, if specified. If ordered keyed alike only one key is furnished to each lock.

Master-Keyed Can be furnished with practically unlimited number of different key changes master-keyed, at extra price.

Operation Regularly furnished 90 degree turn, key withdrawing only in locked position. Can be furnished with 90 degree turn key withdrawing in both locked and unlocked position.

Dimensions "A" and "B" can be varied where necessary for special installations.

SPECIFICATIONS

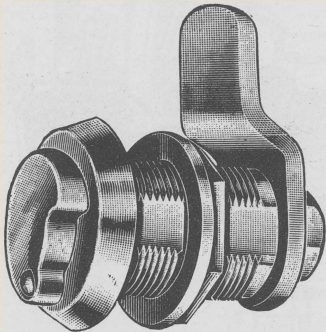
Catalog Number	A	B	C	D	Cam	Net Weight Per Dozen
4092	$\frac{7}{8}$ "	$1\frac{1}{8}$ "	$\frac{3}{4}$ "	$1\frac{5}{16}$ "	Removable	$3\frac{3}{16}$ lbs.
4093*	$1\frac{1}{2}$ "	$1\frac{1}{8}$ "	$\frac{3}{4}$ "	$1\frac{1}{2}$ "	Removable	$3\frac{7}{8}$ lbs.

*Can be grand-mastered at extra cost.

CHICAGO ACE LOCKS ACE 7 PIN TUMBLER

VENDING MACHINE AND PARKING METER LOCKS

These Locks Show Special Locking Features for Different Types of Vending Units



No. 4157

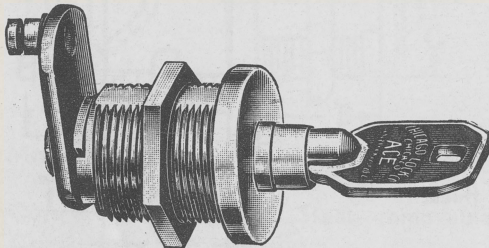
No. 4157—ACE 7 pin tumbler cylinder.

Heavy cam removable type.

Spring closing stainless steel dust cover.

Barrel—brass, $\frac{3}{4}$ " diameter. Length of barrel over threaded diameter $1\frac{5}{8}$ ".

Net weight per dozen 3 lbs.



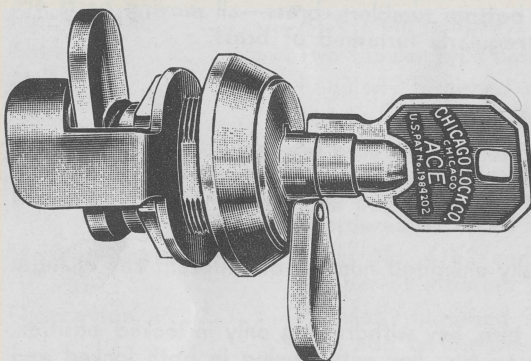
No. 4128

No. 4128—Barrel—brass, $\frac{3}{4}$ " diameter.

Length of threaded diameter of barrel $4\frac{9}{64}$ ".

Cam arranged with shoulder pin for lever connection, operating locking bar, which locks at top and bottom of door.

Net weight per dozen 2 lbs. 1 oz.



No. 4134

No. 4134—For Metal Doors.

Heavy steel cam removable type.

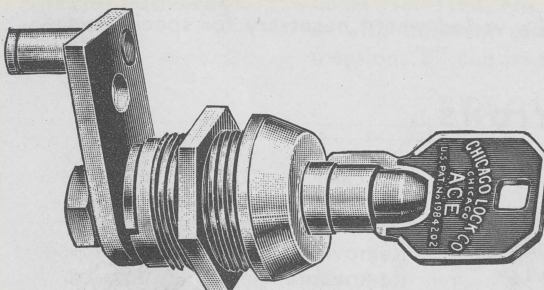
Spring closing stainless steel dust cover.

Barrel—brass, $\frac{3}{4}$ " diameter.

Length of barrel over threaded diameter $1\frac{1}{8}$ ".

Locking cam is given additional strength with the special formed support. The steel support is held in place by the hex. nut which also holds lock cylinder to panel—designed for use in cash doors.

Net weight per dozen 3 lbs.



No. 4168

No. 4168—ACE 7 pin tumbler unit, with tubular key.

Actuating pin with roller cam which operates locking bar for full length door.

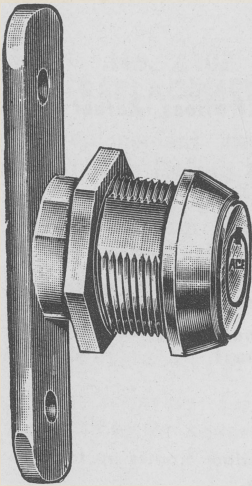
Barrel— $\frac{3}{4}$ " diameter.

Material all brass except steel cam.

Net weight per dozen 2 lbs. 7 ozs.

Illustrations Actual Size

CHICAGO ACE LOCKS ACE 7 PIN TUMBLER

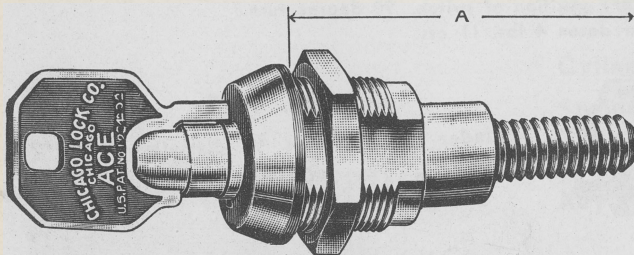


No. 4121

No. 4121

- Cylinder** $\frac{3}{4}$ " x 27 threads. Polished nickel finish.
Mechanism ACE 7 pin tumbler.
Cam Steel, double throw, operates two locking bars, locking at top and bottom of door.
Flats Two flats, $\frac{5}{8}$ " across.
Keys Two tubular type keys. Key changes practically unlimited.

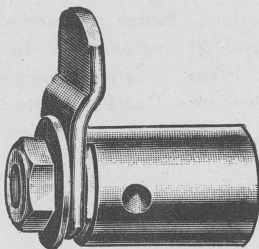
Net weight per dozen 2 lbs. 7 ozs.



No. 4107

No. 4107

- Cylinder** .. $\frac{3}{4}$ " x 27 thread. Polished nickel finish.
Mechanism ACE 7 pin tumbler.
Flats Regularly furnished with two flats. $\frac{5}{8}$ " across. Can be furnished with one or two flats to any dimension to fit the hole in metal panel.
Threaded Extension .. Steel, $\frac{5}{16}$ " x 18 thread. Extension can be furnished to special length, with thread to special specifications.
Use For drawing doors and covers down tight on coin meters.
Keys Two tubular type keys. Key changes practically unlimited.
When ordering, specify "A" dimension required.
 Net weight per dozen 2 lbs. 4 ozs.

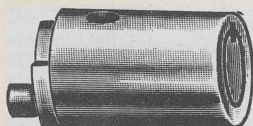


No. 4140

No. 4140

Smooth bore cylinder, $\frac{5}{8}$ " diameter. Held in place with pin or screw in hole in side of cylinder.

Net weight per dozen 1 lb. 11 ozs.



No. 2907

No. 2907

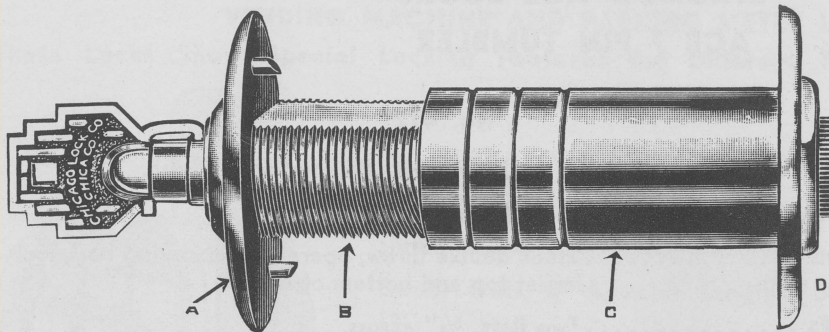
Smooth bore cylinder. $\frac{5}{8}$ " diameter x $\frac{3}{32}$ " length overall to back of cam. Made for malleable or die cast outer housing.

Steel washer on back of lock can be furnished with eccentric pin $\frac{7}{32}$ " off-center or $\frac{3}{32}$ " off-center. Locks can be furnished either 90 degree or 180 degree turn, and arranged for removal of key in one or two positions.

Net weight per dozen 1 lb. 5 ozs.

Illustrations Actual Size

CHICAGO SWITCH LOCKS



Illustrations Actual Size

No. 3039—Burglar Alarm Shunt Lock—Single Pole—Two Terminal

No. 4101—Underwriters' Laboratories approved. For use in equipment on which U.L. approval is desired. Has hardened face and center post.

Cylinder "B" ACE 7 pin tumbler.

Front Escutcheon Washer

"A" Brass, polished chrome finish.

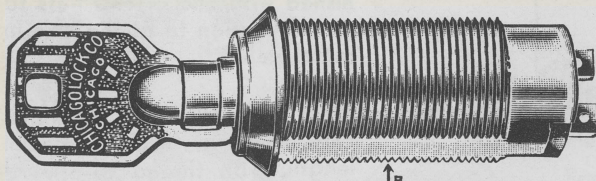
Adjusting Sleeve "C" Brass, polished chrome finish. Regularly furnished 2" length to fit door frames up to 2 $\frac{7}{8}$ " in thickness. Can be furnished in longer lengths at additional price.

Back Escutcheon Washer

"D" Brass, polished chrome finish.

Switch Contacts Regularly furnished with key withdrawing only when switch contact is broken. Can also be furnished with key withdrawing only when switch contact is ON or with key withdrawing in both the ON and the OFF position of switch. 90 degree turn.

Net weight per dozen 4 lbs. 11 ozs.



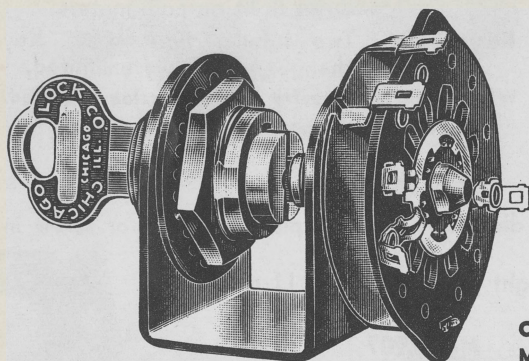
No. 4073—Automobile Burglar Alarm Switch Lock—Two Terminal—Single Pole

No. 4073

Cylinder Brass. $\frac{3}{4}$ " diameter—27 thread.

Mechanism ACE 7 pin tumbler. Switch contacts can be arranged same as No. 3039 above.

Net weight per dozen 2 lbs. 7 ozs.

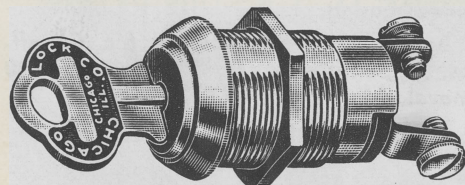


No. 2242—Burglar Alarm Switch Lock

No. 2242

For use in burglar alarm systems. Switch is operated by key turn. Three circuits—180 degree turn. Two circuits—90 degree turn. When ordering, specify positions in which key is to withdraw. Can be furnished with practically any circuit arrangement to specification. Can also be furnished with ACE 7 pin tumbler locking mechanism.

Net weight per dozen—2 $\frac{5}{8}$ lbs.



No. 2174—Switch Lock—Single Pole

No. 2174

Cylinder $\frac{3}{4}$ "—27 thread. Brass, polished nickel.

Mechanism Unit eleven blade tumbler assembly encased in brass frame.

Switch Contacts Regularly furnished with key withdrawing only when contact is broken. Can also be furnished with key withdrawing only when contact is ON or in both the ON and OFF position of switch. 90 degree turn.

Terminals Regularly furnished with solder terminals for burglar alarm use. If desired for automotive switch, specify Part No. 2999, which has screw type terminals.

Net weight per dozen—1 $\frac{7}{8}$ lbs.

CHICAGO ACE LOCKS

ACE 7 PIN TUMBLER

Illustrations Actual Size

No. 4102 PIN GAME REPLACEMENT CYLINDER

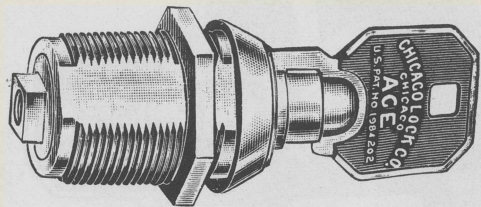
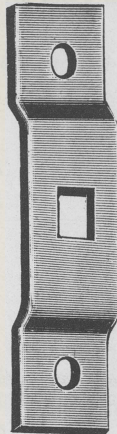
For replacement use on games equipped with double locking bar. Cam illustrated is not regularly furnished because the machine's old cam and locking bars can be used with this cylinder.

CylinderBrass. $\frac{3}{4}$ " diameter.

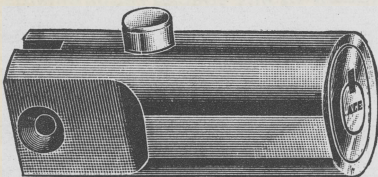
Length of Outer Barrel from Under Shoulder $\frac{15}{16}$ ".

When ordering for replacement, specify dimensions of square boss at rear end of lock.

Net weight per dozen, less cams— $2\frac{5}{8}$ lbs.



No. 4102



No. 4150

No. 4150 STANDARD FILING CABINET LOCK

CylinderBrass.

Spring BoltSteel.

KeysTwo tubular type, embossed.

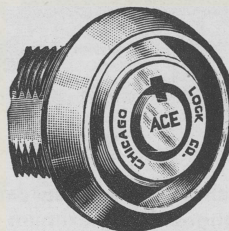
Key ChangesVarious changes regularly furnished. Can be keyed alike or alike in sets if specified.

Master-KeyedCan be master-keyed, at extra cost, with practically unlimited number of different key changes.

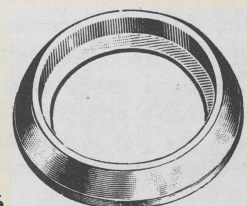
Net weight per dozen— $2\frac{7}{16}$ lbs.

No. 4032-16 HARDENED PROTECTING WASHER

The round keyway of the ACE Lock prevents insertion of a strong tool to turn the entire cylinder in its mounting. This hardened washer protects the exposed shoulder of the lock from twisting with a wrench or special tools. When used with ACE Cylinder Locks as shown, you are assured of extra security.



Protecting washer shown in use with ACE Cylinder Lock.

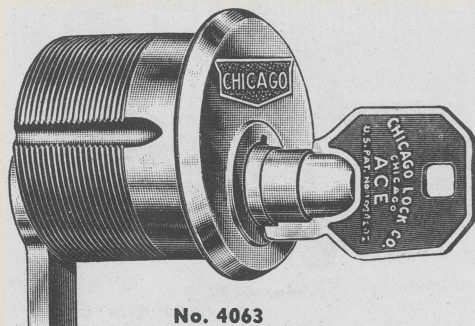


No. 4032-16

CHICAGO ACE LOCKS

ACE 7 PIN TUMBLER REPLACEMENT MORTISE CYLINDER

Can Be Mastered and Grand Mastered
With No Loss of Security



No. 4063

Illustrations
Actual Size



The ACE is the most flexible, most secure mortise cylinder lock available. Particularly well suited to large installations in industrial plants, apartment buildings, large housing projects, hotels, and clubs and organizations which issue private entry keys to members only. Thousands of key changes are available.

Another outstanding feature of the ACE Cylinder is that it can be mastered and grand mastered with no loss of security! For each master and grand master setup, **full sets** of 7 extra tumblers are added to the lock. This does **not** increase the diameter of the lock.

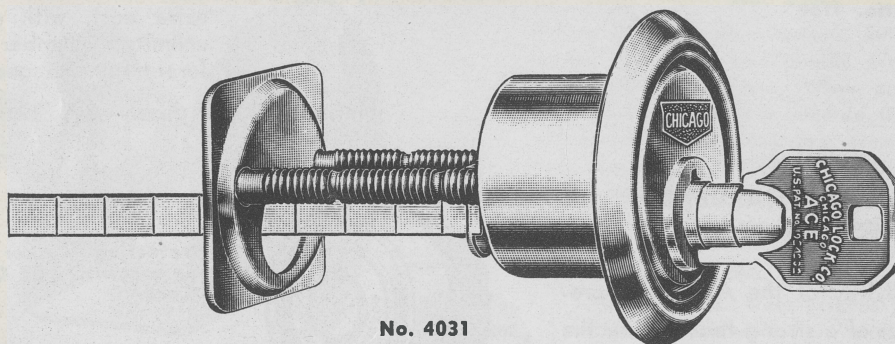
Cylinder is made of brass in standard diameter and thread to fit all makes of lock sets. Standard finish is polished brass. Other finishes available on special order at additional cost. Two keys regularly furnished with each lock. Can be keyed variously, alike, alike in sets—or to any special requirements.

Net Weights Per Dozen

No. 4063	1 1/8" long—4 lbs. 11 oz.	No. 4063-20	1 3/8" long—5 lbs. 13 oz.
No. 4063-15	1 1/4" long—5 lbs. 4 oz.	No. 4063-25	1 1/2" long—6 lbs. 6 oz.

Length is measured from under shoulder of outer barrel to back of cam.

ACE 7 PIN TUMBLER REPLACEMENT RIM NIGHT LATCH CYLINDER



No. 4031

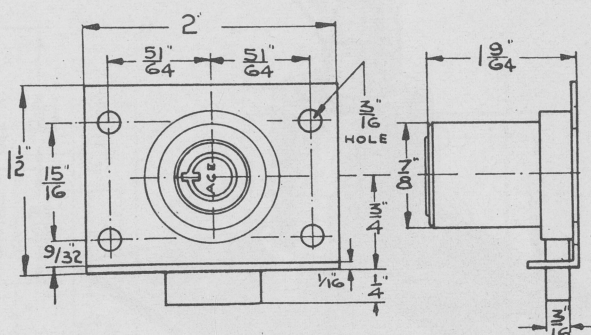
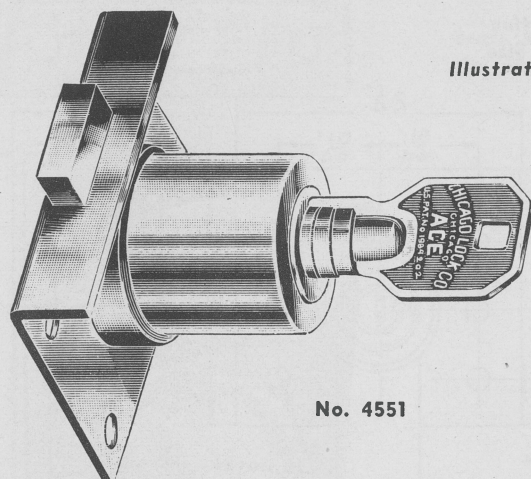
The ACE Replacement Night Latch Cylinder also can be mastered and grand mastered with no loss of security. Thousands of key changes for maximum security.

Cylinder is made of brass with polished face. Steel actuating bar is held to the back of the lock by a removable arm. This permits the bar to be placed in two positions—at a 90 degree angle—to conform with the slot in the locking bar of the night latch. Furnished complete with brass trim washer, connecting screws and back plate.

Net weight per dozen—4 lbs. 11 ozs.

CHICAGO ACE LOCKS
ACE 7 PIN TUMBLER
DESK LOCK

Illustration Actual Size



Barrel Brass—solid round box.

Finish Nickel plate and polish finish to face.

Bolt Brass, $\frac{5}{8}$ " x $\frac{3}{16}$ ". Throw $\frac{1}{4}$ ".

Mechanism ACE 7 pin tumbler.

Keys Two tubular type, embossed keys.

Key Changes Changes practically unlimited. Special registered key changes can be reserved for exclusive use of an individual customer. Locks furnished keyed alike, or in sets keyed alike if specified. If ordered keyed alike only one key is furnished to each lock.

Master-Keyed Can be furnished with practically unlimited number of different key changes master-keyed, at extra price.

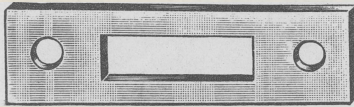
Operation 180 degree turn, key removable in both locked and unlocked position. Can also be furnished key withdrawing only in locked position.

Special Feature For convenience of installing, the box of lock is round. This simplifies mortising.

SPECIFICATIONS

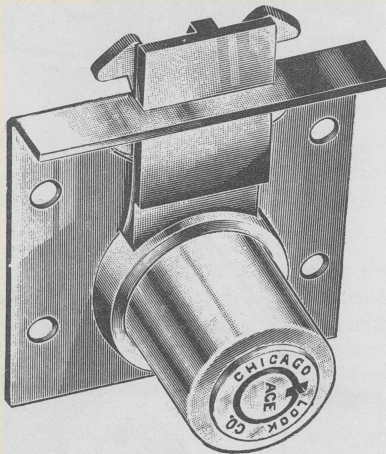
Catalog Number	Size	Selvage to Center	Thickness of Material	Net Weight Per Dozen
4551	2" x 1 1/2"	3/4"	7/8" to 1 1/8"	4 lbs. 4 ozs.

CHICAGO ACE LOCKS
ACE 7 PIN TUMBLER HOOK BOLT
DESK LOCK

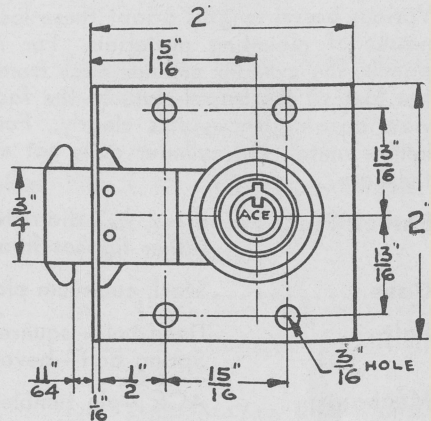
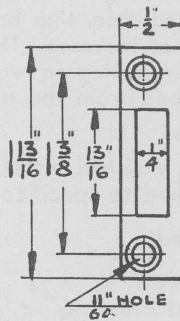


Brass Strike
No. 4565-13

Illustrations
Actual Size



No. 4565



- Cylinder** Brass $\frac{7}{8}$ " diameter. Solid round box. Nickel plate and polish to face. Other finishes furnished at additional price.
- Bolt** Brass. Double hook bolt, locks positively to strike. Bolt withdraws from view when unlocked.
- Mechanism** Ace 7 pin tumbler.
- Strike Plate** One No. 4565-13 regularly furnished with each lock— $1\frac{1}{8}$ " x $\frac{1}{2}$ ".
- Keys** Two embossed keys to each lock.
- Key Changes** Changes practically unlimited. Key changes all alike, alike in sets, or all different. If ordered keyed alike only one key is furnished to each lock.
- Master-Keyed** Can be furnished with a practically unlimited number of different key changes master-keyed, at extra price.
- Operation** 180 degree turn. Key removable in both locked and unlocked position.
Can be furnished with key removable in locked position only if specified.

SPECIFICATIONS

Catalog Number	Size	Selvage to Center of Cylinder	Length of Barrel from lower edge of back plate	Net Weight Per Dozen
4565	2" x 2"	$1\frac{5}{16}$ "	$1\frac{9}{64}$ "	4 lbs. 12 ozs.
4566	2" x 2"	1"	$1\frac{9}{64}$ "	4 lbs. 12 ozs.

CHICAGO ACE LOCKS

Full Surface Mounting
For Lockers, Food Lockers, Cupboards and Drawers

Spring and Dead-Bolt Types

Illustrations Actual Size

This series fills a definite need where maximum security and a large number of key changes are required. Can be master-keyed and grand-mastered with no loss of security.

Various barrel lengths adapt these locks to all standard thicknesses of mounting materials. For mounting in thin metal panels, the cylinder extends back from the case, thus bringing the face of the barrel close to the face of the case. The side view drawing shows this clearly. For mounting in wood or hollow metal, the cylinder does not extend from the back of the case.

Barrel Brass, $\frac{3}{4}$ " diameter, polished nickel plate.
Other finishes furnished to specification.

Case Steel, cadmium plated.

Bolt Dead bolt—square brass, $\frac{3}{4}$ " x $\frac{1}{4}$ ".
Spring bolt—beveled brass, $\frac{3}{4}$ " x $\frac{1}{4}$ ".

Mechanism ACE 7-pin tumbler.

Keys Two tubular type, embossed keys.

Key Changes ... Changes practically unlimited. Special registered changes can be reserved for exclusive use of an individual customer. Locks furnished keyed alike, or alike in sets if specified. If keyed alike, only one key is furnished with each lock.

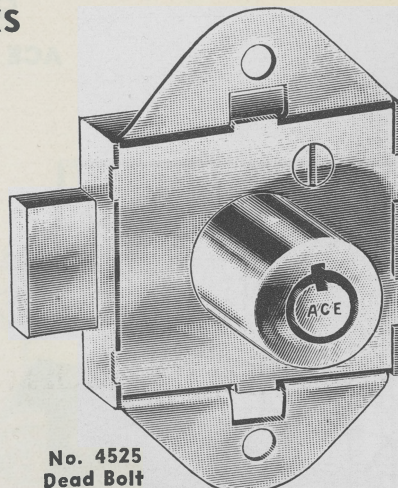
Master-Keyed .. Can be furnished with practically unlimited number of different key changes master-keyed, at extra price. Can be grand-mastered at extra price.

SPECIFICATIONS

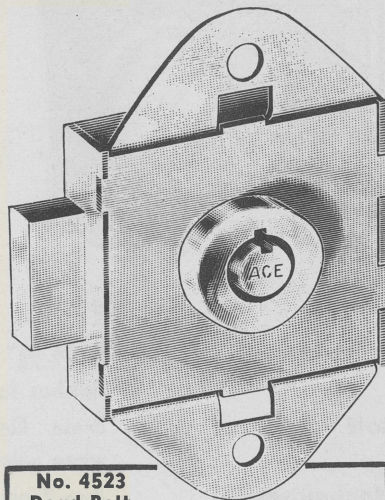
Catalog No.		A	Designed for Mounting in:	Net Weight Per Dozen
Dead Bolt	Spring Bolt			
4523	4524*	$\frac{3}{16}$ "	Metal	$4\frac{5}{16}$ lbs.
4525	4526*	$\frac{13}{16}$ "	Wood or Hollow Metal	$3\frac{3}{4}$ lbs.
4527	4528*	$\frac{15}{16}$ "	Wood or Hollow Metal	$4\frac{1}{8}$ lbs.
4529	4530*	$1\frac{1}{16}$ "	Wood or Hollow Metal	$4\frac{1}{2}$ lbs.

*When specified, Strike Plate No. 860-15 is furnished with spring bolt types.

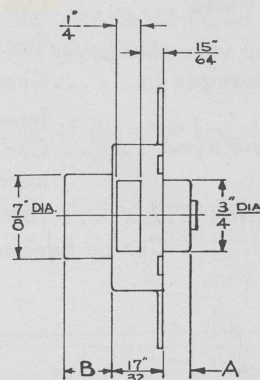
When ordering, be sure to specify whether for Right Hand, Left Hand or Drawer use.



No. 4525
Dead Bolt



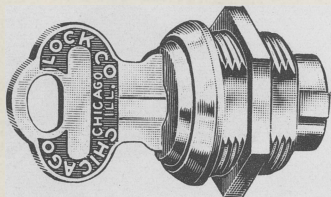
No. 4523
Dead Bolt



On locks No. 4523 and 4524, when master-keyed, dimension B will not exceed $\frac{1}{2}$ ". Or $\frac{5}{8}$ " when grand-mastered.

CHICAGO REMOVABLE PLUG LOCKS

**ACE and Double Bitted Cylinder Locks
for Use on Vending Machines
Where Hex Wrench Operation of Latching Device Is Desired**



No. 3185-25

This type of lock gives you the opportunity of engineering a hex wrench operated latching device to suit your own particular needs.

A typical installation is shown in the illustration below. The latching device, furnished by you, is mounted on your equipment. Barrel of the lock is mounted in the panel by means of a retaining nut, and the lock plug is inserted into the barrel. Key is then turned to locked position, thus holding plug into barrel.

Operation of the lock is simple. Key is inserted and turned to unlocked position. Plug is withdrawn and hex wrench is inserted in hole through lock barrel. Wrench is seated in hex socket in the latch, and then turned to open the door or cover. These locks are particularly well suited to cam, screw and double locking bar operations.

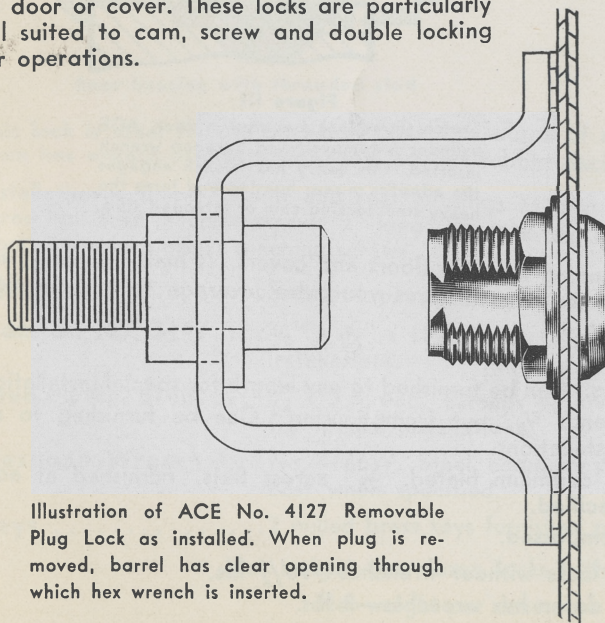


Illustration of ACE No. 4127 Removable Plug Lock as installed. When plug is removed, barrel has clear opening through which hex wrench is inserted.

Illustrations Actual Size

SPECIFICATIONS

Cylinder . . . Brass, $\frac{3}{4}$ "-27 thread.

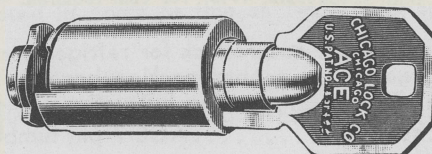
Length Length of barrel from under shoulder—No. 4127, $\frac{13}{16}$ ";
No. 3185-25, $\frac{7}{16}$ ".

Mechanism. No. 4127—ACE 7-pin tumbler.
No. 3185-25—Double Bitted 11 criss-cross tumbler.

Keys No. 4127—Two tubular type keys. Key changes practically unlimited.
No. 3185-25—Two milled brass keys. 250 key changes.

Flats No. 4127—Two flats, $\frac{43}{64}$ " across, minimum.
No. 3185-25—Two flats, $\frac{5}{8}$ " across, minimum.

Net Weight per Dozen
No. 4127— $1\frac{7}{8}$ lbs.
No. 3185-25— $1\frac{5}{16}$ lbs.

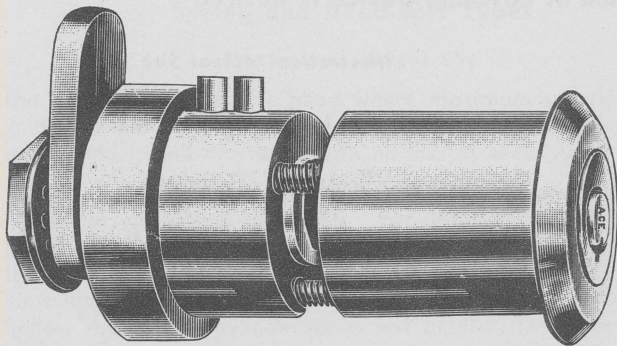


No. 4127

Includes removable cylinder unit, keys, and threaded barrel only.

CHICAGO ACE LOCK REFRIGERATOR VENDING MACHINE LOCK

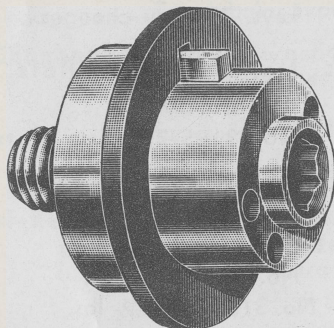
Super Secure — 7 Pin Tumblers



No. 4147-25
Figure I

Illustration of complete lock assembly

A front housing and a rear housing are held together with three No. 8-32 machine screws, 2" long. The lock can be used in doors as thin as $1\frac{7}{8}$ ", or in heavier doors by using longer machine screws. The front housing contains the removable ACE cylinder unit which is removed by inserting the proper key and turning to unlocked position.



Rear housing above is for screw-type installations. When complete assembly is desired with threaded male stud, specify No. 4148. No cam required.

Illustrations
Actual Size

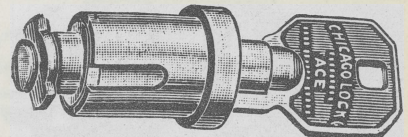


Figure II

Shows ACE cylinder removed from housing. Removal of cylinder leaves opening for hex wrench through front housing. Plugs available separately, keyed to your change if desired.

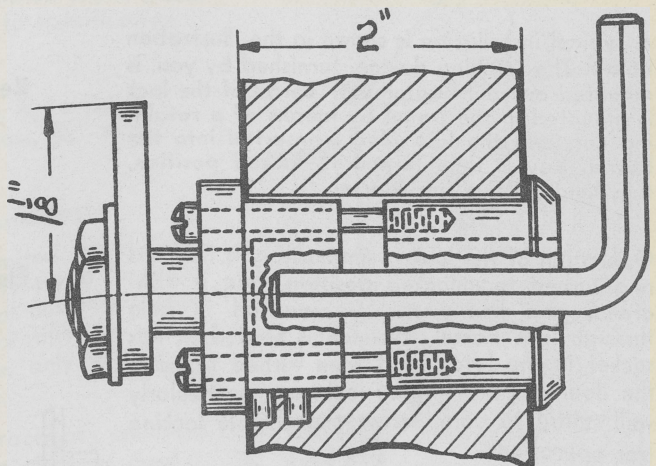


Figure III

Sketch shows lock mounted in door. ACE cylinder is removed and hexagon wrench inserted. This heavy hex wrench engages the adaptor in rear housing and turns the heavy steel locking cam or threaded stud.

Here's a super secure lock for refrigerator vending machine doors and covers. It makes a really tight seal against the rubber packing because the hex wrench gives you extra leverage to pull up tight. Installation is simple—see instructions on page 43.

Mechanism ACE 7 pin tumbler.

Cam on No. 4147-25... $\frac{3}{4}$ " x $\frac{3}{16}$ " x $1\frac{1}{8}$ " long. Can be furnished to any length for special installations.

Stud on No. 4148.... $\frac{1}{2}$ "-13 thread. Extends $\frac{5}{8}$ " out from housing. Can be furnished to any length for special installations.

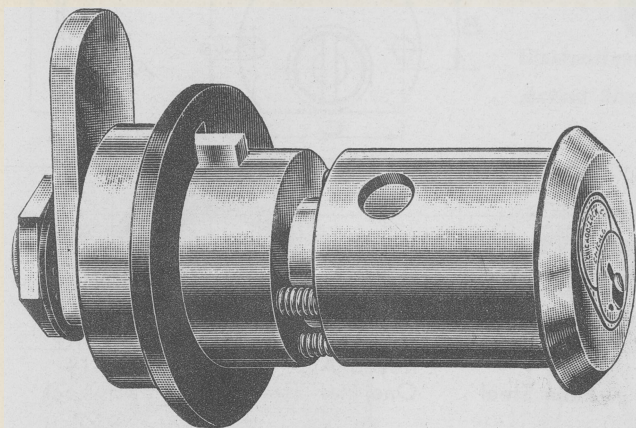
Hexagon Wrench No. 4146W. Steel, cadmium plated. $\frac{3}{8}$ " across flats. Furnished at additional cost when specified.

Keys Two tubular type, embossed.

Net weight per dozen locks without wrenches— $10\frac{1}{2}$ lbs.

Net weight per dozen hex wrenches—3 lbs.

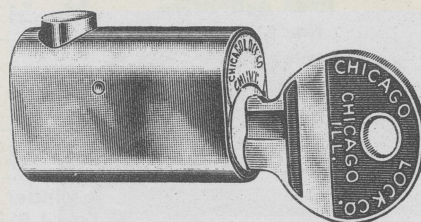
CHICAGO PIN TUMBLER LOCK REFRIGERATOR VENDING MACHINE LOCK



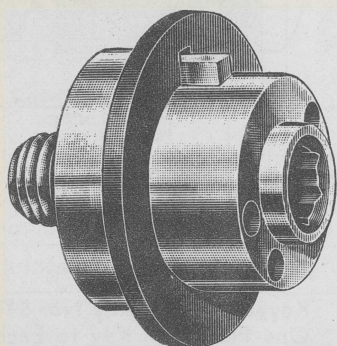
No. 5147

Complete lock assembly showing rear housing furnished with removable cam.

*Illustrations
Actual Size*



Cylinder shown removed from front housing, leaving opening for hex wrench. See Figure III, Page 42.



Rear housing with threaded stud

Rear housing at left is for screw-type installations. When complete assembly is desired with threaded male stud, specify No. 5148. No cam required.

This lock is ideal for use on heavy covers or doors of refrigerator vending machines. Extra leverage from hex wrench assures a tight seal against rubber packing with the use of only one lock in most cases.

Installation is simple. Front and rear housings fit into $1\frac{1}{8}$ " hole in door and are held together with three No. 8-32 machine screws, 2" long. The lock can be used in doors as thin as $1\frac{7}{8}$ ", or in thicker doors by using longer machine screws.

MechanismSecure 4 pin tumbler.

Cam on No. 5147.... $\frac{3}{4}$ " x $\frac{3}{16}$ " x $1\frac{1}{8}$ " long. Can be furnished to any length specified for special installations.

Stud on No. 5148.... $\frac{1}{2}$ "-13 thread. Extends $\frac{5}{8}$ " out from housing. Can be furnished to any length for special installations.

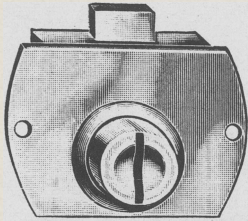
Hexagon WrenchNo. 4146W. Steel, cadmium plated. $\frac{3}{8}$ " across flats. Furnished at additional cost when specified.

Keys2 milled brass keys furnished per lock.

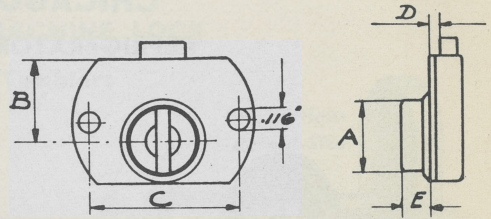
Net weight per dozen locks without wrenches— $10\frac{1}{2}$ lbs.

Net weight per dozen hex wrenches—3 lbs.

**SMALL METAL BOX AND TOWEL CABINET LOCKS
SURFACE MOUNTED**



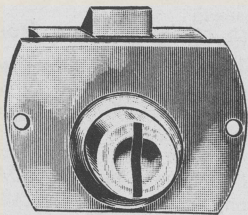
**Dead Bolt
No. 511
Actual Size**



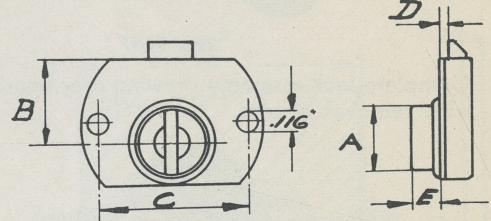
No. 511	A	B	C	D	E	
Size Inches	Cylinder Dia.	Selvage to Center of Cylinder	Mounting Holes Centers	Mounting Surface to Bolt	Height Cylinder	Weight Per Dozen
$1\frac{9}{32}'' \times \frac{7}{8}''$	$\frac{27}{64}''$	$\frac{9}{16}''$	$1\frac{3}{32}''$	$\frac{5}{64}''$	$\frac{3}{16}''$	$\frac{5}{8}$ lbs.

Cylinder — Brass
Dead Bolt & Case — Plain Steel

Keyed Alike — Key No. 511-14
One Flat Steel Key to Each Lock



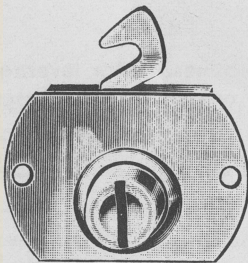
**Spring Bolt
No. 512
Actual Size**



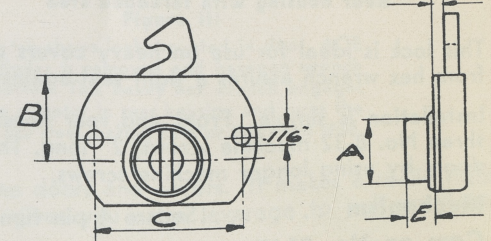
No. 512	A	B	C	D	E	
Size Inches	Cylinder Dia.	Selvage to Center of Cylinder	Mounting Holes Centers	Mounting Surface to Bolt	Height Cylinder	Weight Per Dozen
$1\frac{9}{32}'' \times \frac{7}{8}''$	$\frac{27}{64}''$	$\frac{9}{16}''$	$1\frac{3}{32}''$	$\frac{3}{64}''$	$\frac{3}{16}''$	$\frac{5}{8}$ lbs.

Cylinder — Brass
Spring Bolt & Case — Plain Steel

Keyed Alike — Key No. 511-14
One Flat Steel Key to Each Lock



**Hook Bolt
No. 513
Actual Size**



No. 513	A	B	C	D	E	
Size Inches	Cylinder Dia.	Selvage to Center of Cylinder	Mounting Holes Centers	Mounting Surface to Bolt	Height Cylinder	Weight Per Dozen
$1\frac{9}{32}'' \times \frac{7}{8}''$	$\frac{27}{64}''$	$\frac{9}{16}''$	$1\frac{3}{32}''$	$\frac{5}{64}''$	$\frac{3}{16}''$	$\frac{5}{8}$ lbs.

Cylinder — Brass
Hook Bolt & Case — Plain Steel

Keyed Alike — Key No. 511-14
One Flat Steel Key to Each Lock

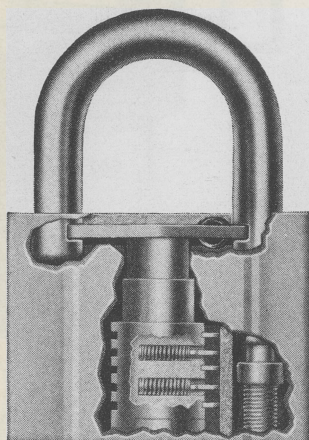
NOTE: Special Finishes are Available on Order.

Weight shown is that for domestic shipments and does not include wooden case for export.

CHICAGO SINGLE BITTED KEY PADLOCKS

Illustrations

Actual Size



**Cut-Open View of
No. 725**



2 bright finish
single bitted
keys with each
lock.

Key Blank
No. K-10-F



No. 725

Self-locking. Swing type bolt that positively grips both sides of the shackle. Plate tumbler type locking plug which incorporates single acting tumblers that protrude from the lock plug into the body of lock, giving extra security.

Note—No. 725—12 key changes only. Keyed alike at no extra cost.

SPECIFICATIONS

Catalog Number	Size of Case	Diameter of Shackle	MATERIAL		Finish Case	Net Weight Per Dozen
			Case	Shackle		
725	1 $\frac{9}{16}$ " x 1 $\frac{1}{4}$ "	$\frac{1}{4}$ "	Die Cast	Steel Cadmium Plated	Baked Enamel	3 $\frac{1}{4}$ lbs.

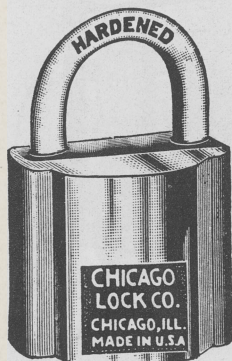
PACKING ONE IN A BOX, 12 TO THE CARTON, 10 DOZEN TO THE CASE

CHICAGO LOCK CO.
DEPENDABLE SECURITY

CHICAGO DOUBLE BITTED KEY PADLOCKS
DOUBLE ACTION LOCKING PRINCIPLE

U. S. PAT. No. 2141748

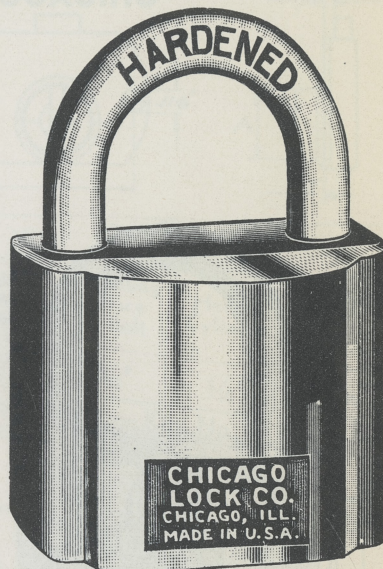
Illustrations
Actual Size



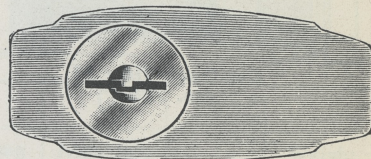
No. 740



No. 741-841



No. 742-842



Self-locking. Revolving cam, which also throws bolt in other side of shackle, positively grips both sides. Uses patented double locking plug, which incorporates eleven criss-cross tumblers that protrude from each side of the lock plug into the body of lock, giving double security. These tumblers are manually operated, eliminating freezing, or sticking, or breaking of tumbler springs. Can be furnished with 9" chain. See price list. Can be furnished in polished nickel finish. See price list. 250 key changes possible. **Keyed alike at no extra charge. Not master-keyed.**

SPECIFICATIONS

Catalog Number	Size of Case	Diameter of Shackle	MATERIAL		Finish Case	Net Weight Per Dozen
			Case	Shackle		
740	1 1/8" x 1 1/8"	3/16"	Solid Die Cast	Hardened Steel Cadmium Plated	Baked Enamel	2 1/4 lbs.
741	1 9/16" x 1 1/2"	1/4"	Solid Die Cast		Baked Enamel	5 lbs.
742	2" x 1 5/8"	5/16"	Solid Die Cast		Baked Enamel	7 1/2 lbs.
841	1 9/16" x 1 1/2"	1/4"	Extruded Bronze		Polished Bronze	5 1/2 lbs.
842	2" x 1 5/8"	5/16"	Extruded Bronze		Polished Bronze	8 lbs.

PACKING ONE IN A BOX, 12 TO A CARTON, 10 DOZEN TO A CASE

CHICAGO LOCK CO.
DEPENDABLE SECURITY

CHICAGO SINGLE BITTED 5 DISC TUMBLER LOCKS

DOUBLE ACTION LOCKING PRINCIPLE

U. S. PATENT No. 2141748



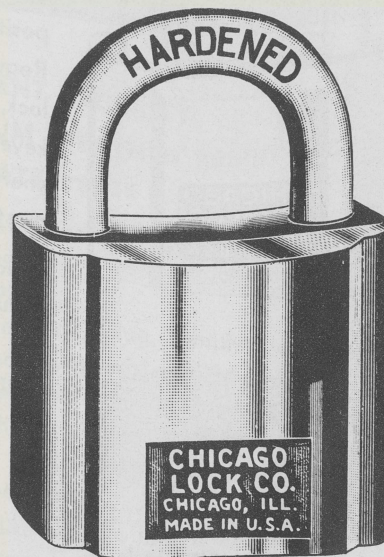
No. 1740



Two single bitted milled
brass keys with each lock.
Key blank No. K-5.



No. 1741
No. 1841



No. 1742
No. 1842

Illustrations
Actual Size

Same locking mechanism as used in locks Nos. 740, 741 and 742.

Can be furnished with 9" chain. See price list.

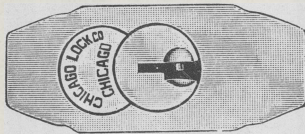
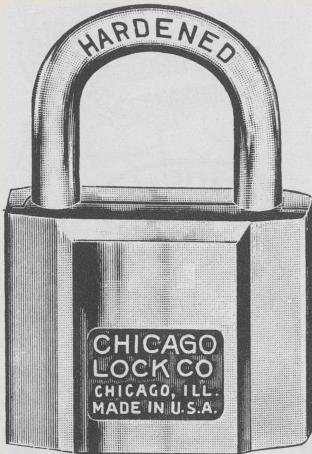
Keyed alike at no extra cost.

SPECIFICATIONS

Catalog Number	Size of Case	Diameter of Shackle	MATERIAL		Finish Case	Net Weight Per Dozen
			Case	Shackle		
1740	1 1/8" x 1 1/8"	3/16"	Solid Die Cast	Hardened Steel Cadmium Plated	Baked Enamel	2 1/4 lbs.
1741	1 9/16" x 1 1/2"	1/4"	Solid Die Cast		Baked Enamel	5 lbs.
1742	2" x 1 5/8"	5/16"	Solid Die Cast		Baked Enamel	7 1/2 lbs.
1841	1 9/16" x 1 1/2"	1/4"	Extruded Bronze		Polished Bronze	5 1/2 lbs.
1842	2" x 1 5/8"	5/16"	Extruded Bronze		Polished Bronze	8 lbs.

PACKING ONE IN A BOX, 12 TO A CARTON, 10 DOZEN TO A CASE

CHICAGO 4 PIN TUMBLER PADLOCKS

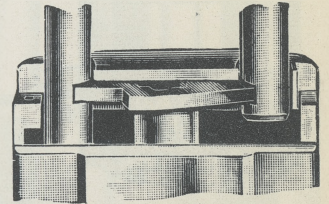


No. 5725
Actual Size

Self-Locking. Swing type steel bolt that positively grips both sides of the shackle. Regularly furnished with 2 keys to each lock, various changes. Locks can be keyed alike, alike in sets at no extra charge. They can also be furnished masterkeyed at an additional charge.

Shackle with $\frac{7}{8}$ inch opening regularly furnished. Special length shackles can be furnished to order at additional charge.

**Locks Both Sides
of Shackle**



**Cut open view of
No. 5725**



$\frac{3}{4}$ Size

MATERIAL: Case—Die cast, no rivets, rustproof.

Shackle—Hardened steel, rustproof.

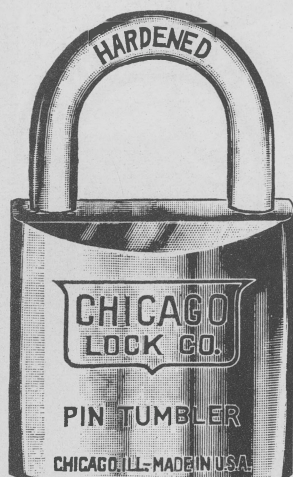
FINISH: Mar proof baked enamel.

MECHANISM: 4-Pin Tumbler

Key Blank K-P-1

SPECIFICATIONS

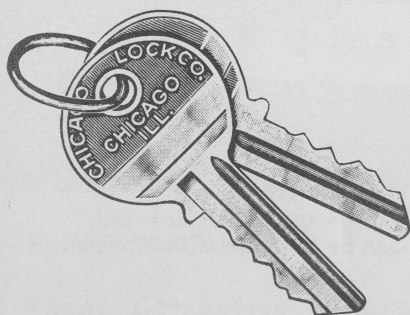
Lock No.	Size of Case	Dia. of Shackle	Net Weight Per Dozen	PACKING
5725	$1\frac{9}{16}$ " x $1\frac{1}{4}$ "	$\frac{1}{4}$ "	4 lbs.	1 in a box 12 to a carton 10 doz. to shipping container



No. 6841



View of face, showing
key support channel
in plug.



CHICAGO 5 PIN-TUMBLER PADLOCK with SOLID BRONZE CASE

- EXCELLENT SECURITY
- MAXIMUM WEATHER RESISTANCE
- MODERATE PRICE

These husky new Padlocks give full pin-tumbler security, plus hardened steel shackles that resist sawing and filing.

Solid case, locking bolt, plug, tumblers and springs are bronze for maximum resistance to moisture, frost, salt air, and other conditions conducive to corrosion. New type plug has a channel milled in it to receive shoulder of key. Relieves key bit of all strain . . . prevents key breakage.

Can be keyed alike or alike in sets at no extra cost. Can be master-keyed at additional cost.

SPECIFICATIONS

- Self locking.
- No. 6840—4 pin-tumbler mechanism.
No. 6841 and 6842—5 pin-tumbler mechanism.
- Solid, one-piece, extruded bronze case.
- Hardened steel shackle—bright cadmium plated.
- Bronze shackles, special length shackles and 9" chains furnished to order at additional cost.
- 2 milled keys regularly furnished for each lock.

Catalog Number	Size Case (Inches)	Dia. of Shackle	Shackle Clearance	Finish	Net Weight Per Doz. (lbs.)
6840 (4 pin-tumbler)	1 1/8 x 1-9/16 x 5/8	3/16"	5/8"	Brushed Bronze	3 1/2
6841 (5 pin-tumbler)	1 1/2 x 1 3/8 x 21/32	1/4"	13/16"	Brushed Bronze	4 3/4
6842 (5 pin-tumbler)	2 x 1-13/16 x 3/4	11/32"	1-1/16"	Brushed Bronze	9 1/2

Packed in individual boxes; 12 to a carton; 10 dozen to a case

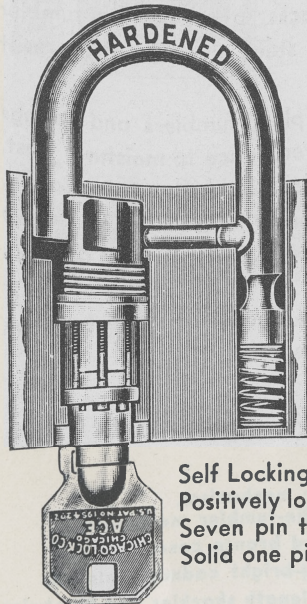
CHICAGO LOCK CO.
DEPENDABLE SECURITY

CHICAGO ACE PADLOCKS

U. S. PATENT No. 2141748



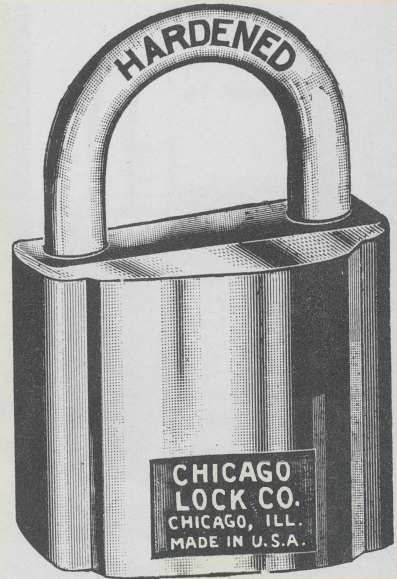
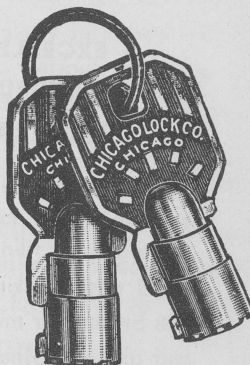
No. 4741-4841



Cut-Open View
No. 4741

Illustrations
Actual Size

2 ACE Keys
With Each Lock



No. 4742-4842



Self Locking—Double action locking principle.
Positively locks both sides of shackle.
Seven pin tumbler cylinder.
Solid one piece case.

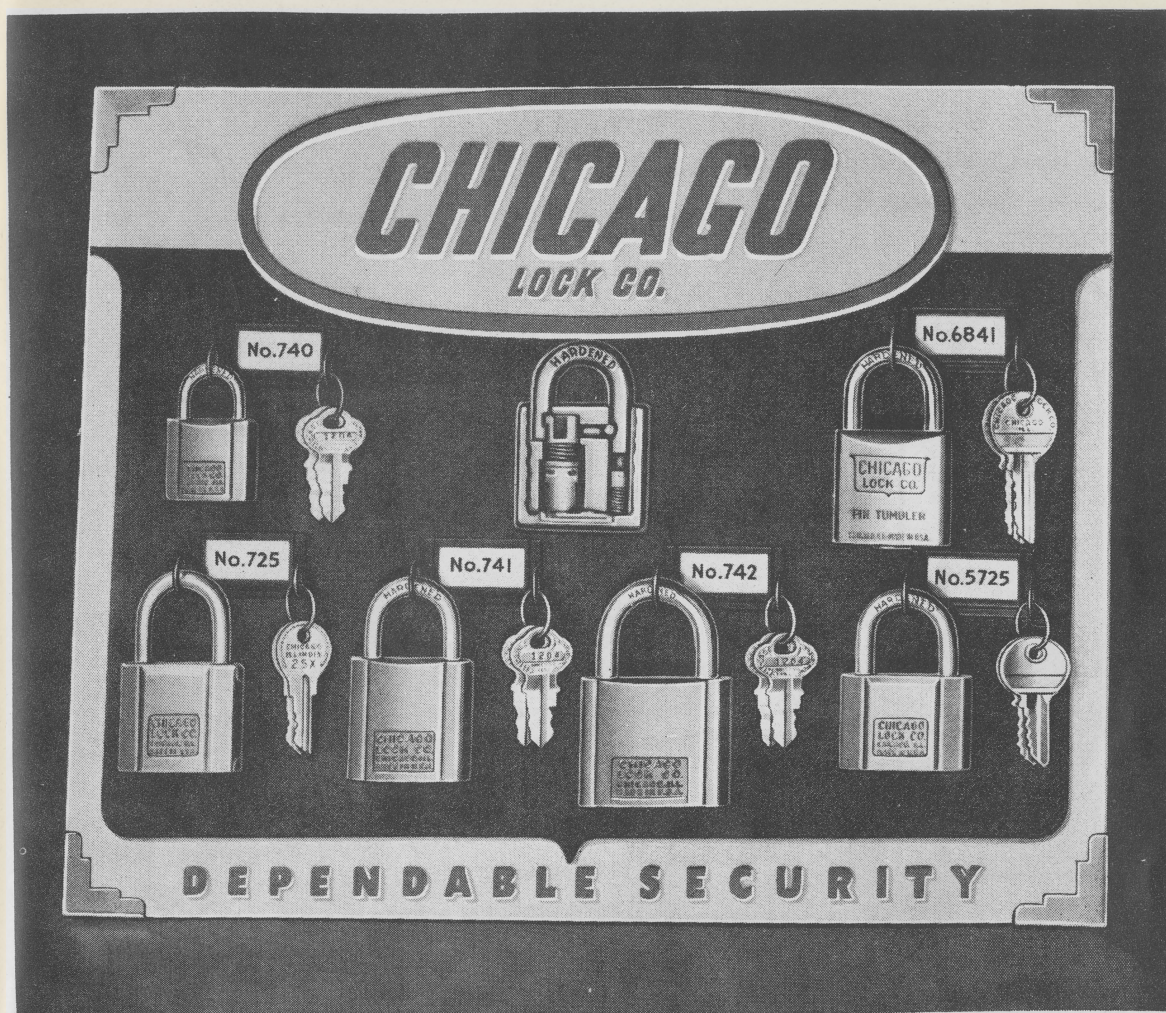
Can be master-keyed.
Can be grand master-keyed.
Can be furnished with 9" chain.

SPECIFICATIONS

Catalog Number	Size of Case	Diameter of Shackle	MATERIAL		Finish Case	Net Weight Per Dozen
			Case	Shackle		
4741	1 $\frac{9}{16}$ " x 1 $\frac{1}{2}$ "	$\frac{1}{4}$ "	Solid Die Cast		Baked Enamel	5 $\frac{3}{4}$ lbs.
4742	2" x 1 $\frac{5}{8}$ "	$\frac{5}{16}$ "	Solid Die Cast	Hardened Steel	Baked Enamel	8 $\frac{1}{4}$ lbs.
4841	1 $\frac{9}{16}$ " x 1 $\frac{1}{2}$ "	$\frac{1}{4}$ "	Extruded Bronze	Cadmium Plated	Polished Bronze	6 lbs.
4842	2" x 1 $\frac{5}{8}$ "	$\frac{5}{16}$ "	Extruded Bronze		Polished Bronze	8 $\frac{1}{2}$ lbs.

PACKING ONE IN A BOX, 12 TO THE CARTON

Chicago Padlock Merchandiser



- **Embossed Plastic**
- **Three Attractive Colors**

Put new life into your padlock sales with this colorful plastic merchandiser. It's a real stopper that starts your customers buying Chicago Padlocks!

This sales-making Merchandiser is **yours** — at no extra cost — with a moderately-sized assortment of Chicago Padlocks. Write for information on a deal to meet your requirements.

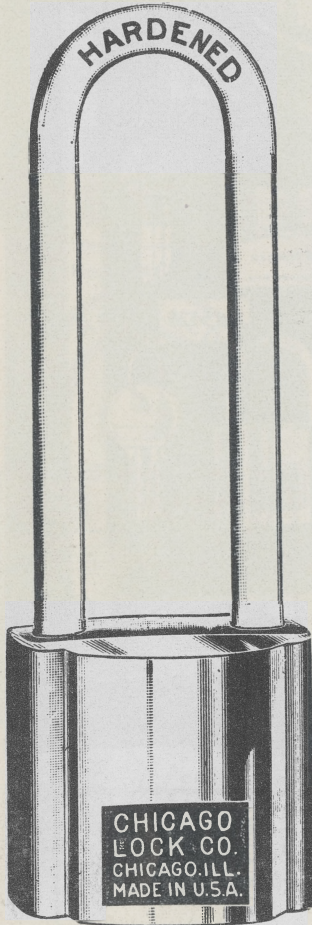
- **Convenient Size** — 13½" wide, 10½" high. Holds 6 Chicago Padlocks — **all good sellers** at a price for every purse.
- **Durable Construction** — Display Board is made of molded, embossed plastic to stay clean and good-looking indefinitely.
- **Colorful** — Background is dark blue for high visibility of padlocks. Border is clear, sparkling white. Lettering is brilliant red to catch and hold attention.
- **Practical** — Each Display is equipped with combination easel for standing or hanging.

CHICAGO PADLOCKS WITH SPECIAL LENGTH SHACKLES

Special length shackles can be furnished with padlocks having different case sizes as specified on padlocks Nos. 741, 1741, 742, 1742, 4741, 4742, 725, 5725 and 6841.

Following sizes furnished from stock at additional price:

Measurements listed below give distance from top of padlock case to inside of shackle when shackle is closed.



1" clearance	2 1/2" clearance
1 1/2" clearance	3" clearance
2" clearance	5 1/2" clearance

Special sizes not listed above also furnished to order, in quantity, at additional price.

CHICAGO "TWO COLOR" PADLOCK DISPLAY

The attractive and unique display stand shown below assists the dealer in displaying and selling CHICAGO popular priced padlocks.

The display is attractive because it has as a background a full cut-open view of the locking mechanism. This display is unique because it is collapsible and can be packed in the top of each container holding one dozen No. 725 or No. 741 padlocks, thus insuring the dealer a fresh display stand each time he gets a shipment of locks.

The two collapsible pockets hold two locks taken from stock. The entire display when set up, has sufficient eye appeal to attract the attention of anyone interested in padlocks.

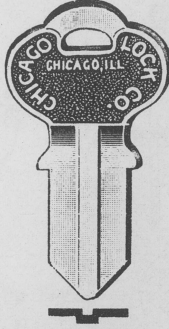


(Size 10" Wide—4" High)

GENUINE CHICAGO SINGLE AND DOUBLE BITTED KEY BLANKS
BRASS MILLED



K-4L
Groove Left of Center



K-4
Center Groove



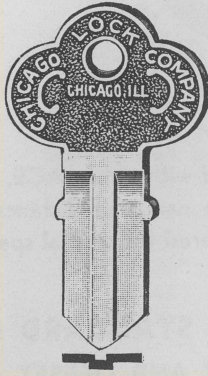
K-4R
Groove Right of Center



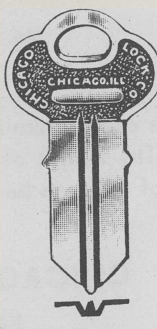
K-4XV
Wide Center Groove



K-4W

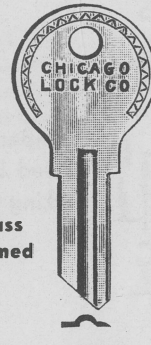


K-2

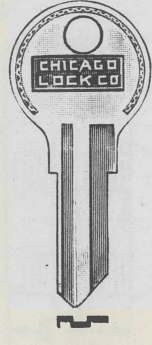


K-7

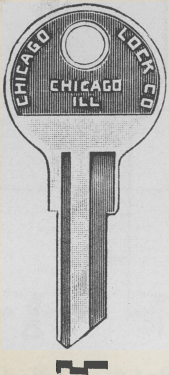
Brass
Formed



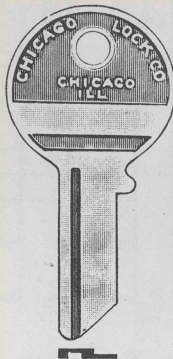
K-10-F



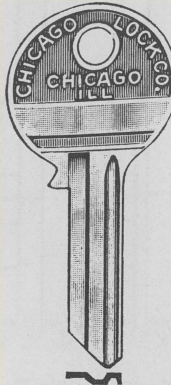
K-10-5



K-5

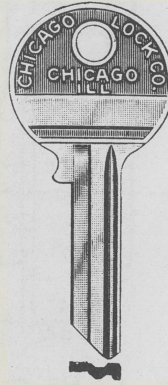


K-P-1
4 Pin-Tumbler



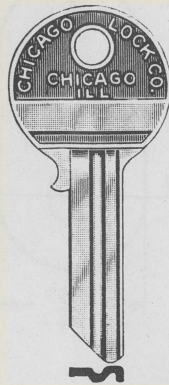
K-P-12
5 Pin-Tumbler

K-P-2
4 Pin-Tumbler



K-P-13
5 Pin-Tumbler

K-P-3
4 Pin-Tumbler



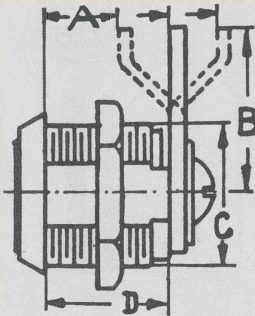
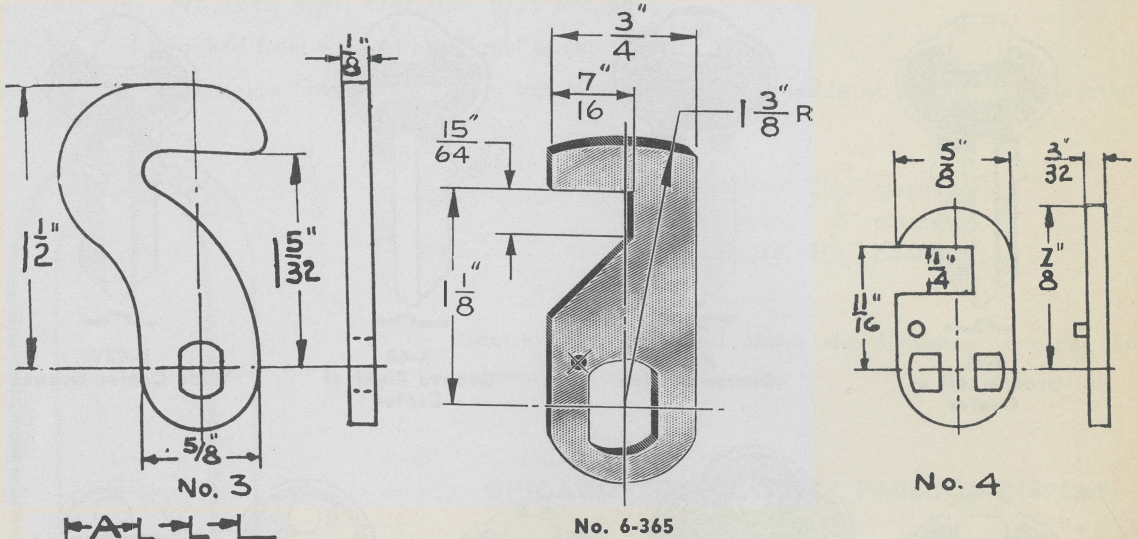
K-P-14
5 Pin-Tumbler

K-P-4
4 Pin-Tumbler

Packed 3 Dozen in a Box

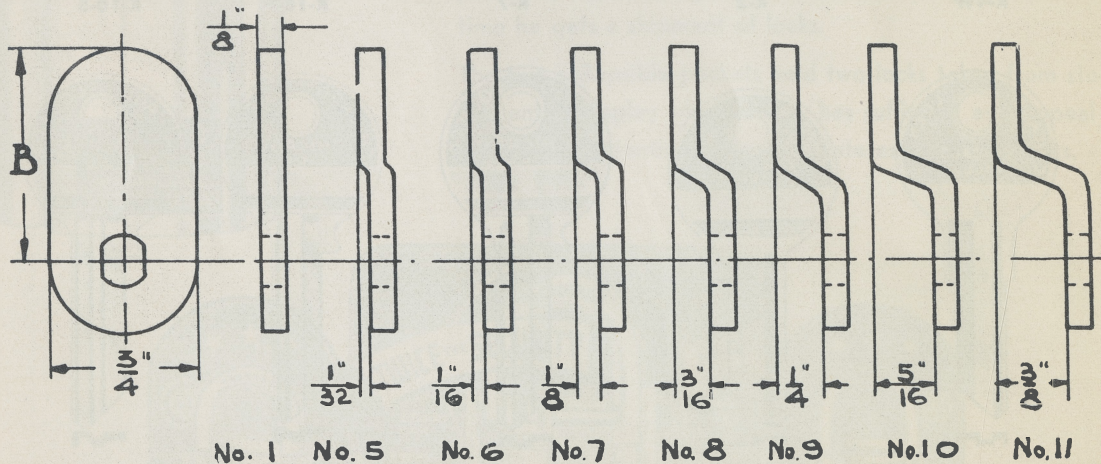
Illustrations Actual Size

CHICAGO STANDARD HOOK CAMS
FOR ACE—DOUBLE BITTED—SINGLE BITTED LOCKS



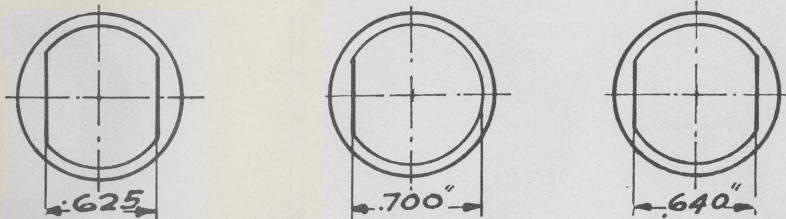
Standard cams can be furnished with either ACE, double bitted and single bitted locks. The length of the cam and distance from center of lock to locking point of cam can be altered for special specifications.

CHICAGO STANDARD CAMS
FLAT AND OFFSET



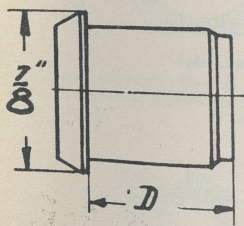
The Cams illustrated above show our standard cams with various off-sets. Dimension "B" is regularly furnished $1\frac{1}{8}$ " length, but can be changed to longer or shorter length for special specifications. When ordering cams to be used with a specific lock, you should consider the length of the lock barrel shown as dimension "D" in catalog specifications. The dimension "A" which you require determines the off-set on the cam.

**CHICAGO STANDARD BARREL LENGTHS AND FLATS FURNISHED ON
ACE—DOUBLE BITTED—SINGLE BITTED CYLINDER LOCKS**



The above illustrations show the three standard dimensions across flats which are regularly furnished on the ACE, double bitted and single bitted cylinder locks. As explained in the specifications accompanying the different locks, either one or two flats can be furnished to any dimension to fit hole in panel.

7/8" HEAD LOCK BARRELS



Double bitted locks.
Die cast barrels.
7/8" diameter head.
Standard stock lengths.

D—7/8"
D—23/4"
D—5/8"
D—3/4"
D—1 1/8"
D—7/8"

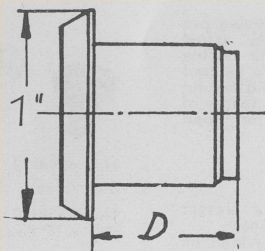
Single bitted locks.
Die cast barrels.
7/8" diameter head.
Standard stock lengths.

D—5/8"
D—3/4"
D—1 1/8"
D—7/8"
D—1 5/8"

Ace lock barrels.
7/8" diameter head.
Standard stock lengths.

D—3 3/8"	D—1"
D—5/8"	D—1 3/8"
D—1 1/8"	D—1 1/4"
D—3/4"	D—1 3/2"
D—7/8"	D—1 1/2"
D—1 5/8"	

1" HEAD LOCK BARRELS



Double bitted locks.
Die cast barrels.
1" diameter head.
Standard stock lengths.

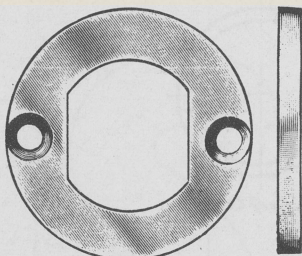
D—1 3/8"
D—1 1/8"
D—1 1/8"
D—1 5/8"
D—1 1/8"
D—1 1/2"

SYMBOLS OF HARDWARE FINISHES

Description	U. S. No.	Description	U. S. No.	Description	U. S. No.
Bright Japanned.....	US1B	Antique Brass Sand Blast		Dull Nickel	US15
Dead Black Japanned.....	US1D	(not shaded)	US6	Nickel Sand Blast	US16
Sherardized	US2S	Antique Copper	US8	Electro Bower Barff	US19
Bright Brass	US3	Bronze	US9	Light Statuary Bronze	US20
Dull Brass	US4	Dull Bronze	US10	Dark Statuary Bronze	US20A
Hot Galvanized	US2H	Nickel	US14	Statuary Bronze Sand Blast	US21

CHICAGO LOCK WASHERS

Illustrations Actual Size

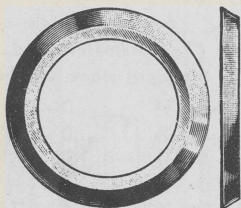


No. 2059-25 Steel Washer

1 1/8" outside diameter x 1/8" thick. Hole to fit 3/4" lock barrel with two flats 5/8" across. Washer fastened to wood with two 1/2" wood screws.

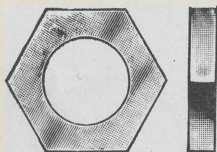
No. 2059-10 Steel Washer

Same as above except hole in washer is for 3/4" diameter lock barrel with one flat .700" across.



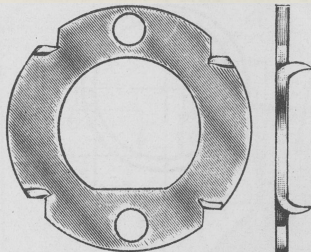
No. 2061 Trim Washer

Furnished if specified with ACE, Double Bitted, or Single Bitted cylinder locks.



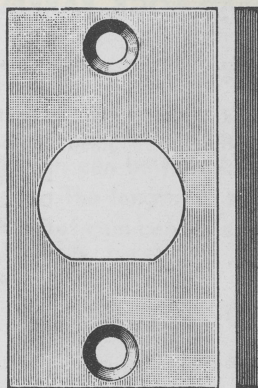
No. 3186-12 Hex. Nut

5/8" thick x 1/2"—20 threads. Furnished regularly with locks No. 3205, No. 3186, No. 3188 and No. 3189.



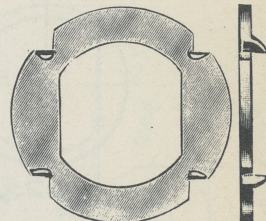
No. 2059-26 Steel Four Prong Washer

1 1/8" outside diameter x 1/8" thick. Hole to fit 3/4" diameter lock barrel with one flat .700" across.



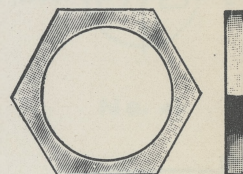
No. 2059-24 Steel Wood Anchor Washer

1/8" thick 2" x 1 1/8". With hole having two flats to fit lock barrel measuring 5/8" across flats. Furnished if specified with double bitted and ACE cylinder locks. To be used most advantageously, wood should be cut out to conform to rectangular shape of washer. Two holes provided for wood screws.



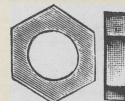
No. 2059-27 Steel Four Prong Washer

1 1/8" outside diameter x 1/8" thick. With hole in washer to fit 3/4" diameter lock barrel with two flats milled 4 1/4" across.



No. 2371 Hex. Nut

1/8" thick x 3/4"—27 threads. Furnished regularly with all double bitted and ACE cylinder locks.



No. 2374 Hex. Nut

3/4" thick x 3/8"—28 thread. Furnished regularly with No. 4152, No. 4153 and No. 4160.



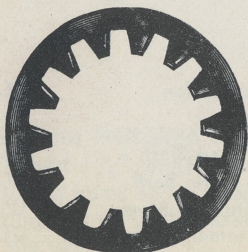
No. 4094-13 Binder Head Screw
8-32 thread, 1/8" long.

No. 2808-10 Washer Head Screw
1/8" x 18 thread, 3/8" long.

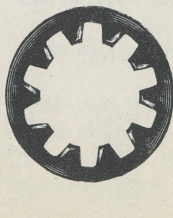
No. 2808-11 Washer Head Screw
1/4" x 28 thread, 1/4" long.

SHAKEPROOF LOCK WASHERS

Shakeproof Lock Washer No. 1232 has a 3/4" diameter hole. Can be used to prevent lock barrel from turning when round hole without flats is stamped in metal panel. Shakeproof Lock Washers Nos. 1224, 1218, 1216-1, 1210, 1208, 1206 and 1204 are used on removable cam locks where the cam is held to lock with hex. nut or machine screw. Locks are usually equipped with Shakeproof washer to prevent cam from loosening.



3/4"
1232



1/2"
1224



5/8"
1218



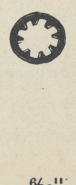
3/4"
1216-1



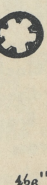
10/32"
1210



9/32"
1208



6/32"
1206



4/32"
1204

NUMERICAL INDEX

LOCK NO.	PAGE	LOCK NO.	PAGE	LOCK NO.	PAGE	LOCK NO.	PAGE
217	18	1971	24	3786	21	5001	25
511	44	1972	24	3795	20	5001-50	25
512	44	1973	24	4031	36	5002	25
513	44	1974	22	4032-16	35	5147	43
521-15	19	1975	22	4063	36	5148	43
521-40	19	1978	23	4073	34	5725	48
523	16	1979	23	4082	38	5860	27
524	16	1980	23	4092	31	5870	27
525	16	1981	23	4093	31	5960	26
526	16	2099B	11	4101	34	5970	26
527	16	2099C	11	4102	35	5972	26
528	16	2131	11	4107	33	5974	26
529	16	2135	11	4121	33	6840	49
530	16	2137	13	4127	41	6841	49
531	16	2174	34	4128	32	6842	49
532	16	2204	12	4134	32	6861	27
551	14	2221	5	4140	33	6871	27
725	45	2234	5	4146W	42, 43	ACE, description of mechanism 28, 29	
740	46	2242	34	4147-25	42	Barrel Lengths, standard table of	55
741	46	2249B	15	4148	42	Cams	7, 54
742	46	2255	12	4150	35	Display, padlock	51, 52
841	46	2306	3	4152	30	Double Bitted, description of mechanism	10
842	46	2430	6	4153	30	Flats, standard table of	55
1701	20	2487B	15	4154	30	Hardware Finishes, table of	55
1702	20	2530	6	4157	32	Key Blanks	53
1703	20	2625	13	4160	30	Screws, washer head	56
1704	20	2907	33	4168	32	Shackles, special lengths for padlocks	52
1740	47	3039	34	4523	40	Washers, finishing	56
1741	47	3106	19	4524	40	Washers, hardened protecting	35
1742	47	3118	4	4525	40	Washers, shakeproof	56
1801	8	3171	4	4526	40	Washers, wood anchor	56
1802	8	3174	4	4527	40		
1803	8	3177-15	13	4528	40		
1804	8	3185-25	41	4529	40		
1840	17	3186A	3	4530	40		
1841	47	3188	12	4551	37		
1842	47	3189	12	4565	39		
1890	17	3205	3	4566	39		
1901	9	3265	18	4741	50		
1902	9	3274	13	4742	50		
1903	9	3319	21	4841	50		
1904	9	3319-50	21	4842	50		
1970	24	3326	18				

