

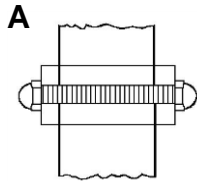
STANDARD MOUNTING METHODS:

Add “W” to prep for Glass Mount. Specify Glass Thickness, Hole Diameter and Finish.

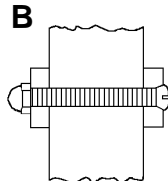
Non-Standard Preps available by quotation only.

Products marked “Combo Pack” include fastening kit for mounting to wood, concrete and plaster/drywall.

All fasteners for 1-3/4” wood or metal doors unless otherwise specified.



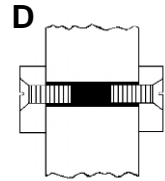
A
Threaded Stud
and Cap Nut



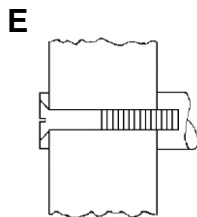
B
Thru-Bolt
and Cap Nut

C

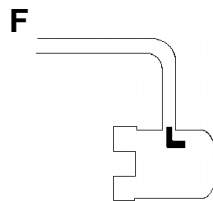
DISCONTINUED
USE
ALTERNATE
MOUNTING “N”



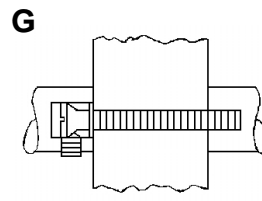
D
Machine Screws and
Threaded Sleeve



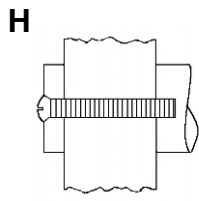
E
Thru-Bolt and
Finish Washer
Not for glass mounting



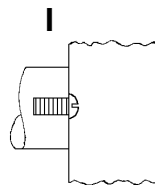
F
J-20 Hook (For Push
Bars only-one end)
Not for glass mounting



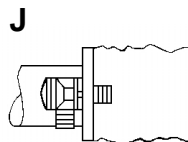
G
Threaded Shoulder Bolt
and Set Screw
BP's req'd for glass doors.
NOTE: Not for Glass mounting



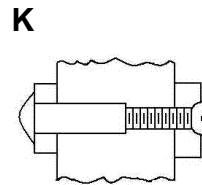
H
Thru-bolt



I
Blind Screw
(Door detail required)
Not for glass mounting.

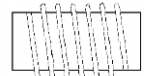


J
Shoulder Bolt and Set
Screw
Round Bases
Specify Riv-Nut “R3”, “R4” or
“B3”, “B4” or “B5” if required, for
use on aluminum doors.
Not for glass mounting

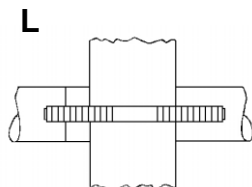


K
Sex Bolt

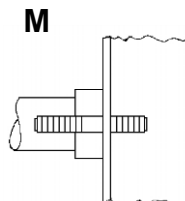
B3, B4, or B5



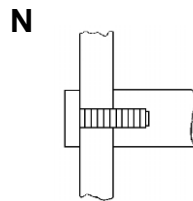
Wood Thread to Machine
Thread Bushing
For J or M Mountings
on Wood Doors
B3 - 1/4-20 Thread
B4 - 5/16-18 Thread
B5 - 3/8-16 Thread



L
Spanner Turning Washer and
Stud. Concealed Mounting for
Round Bases.
For Standard Metal, Wood, or Glass Doors.
Specify. BP's req'd for glass doors.

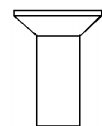


M
Spanner Turning Washer,
Stud Single Mounting for
Round Bases
Specify Riv-Nut “R5” at right if
required. Wood Doors. Specify.



N
Flow Thru Button
Single Mount for
Round Bases
For Standard Metal, Wood
or Glass Doors. Specify.
“R5” or “B5” only.

R3, R4 or R5



Riv-Nut
R3 - 1/4-20 Thread
R4 - 5/16-18 Thread
R5 - 3/8-16 Thread
Note: Not recommended for
Offset Pulls.